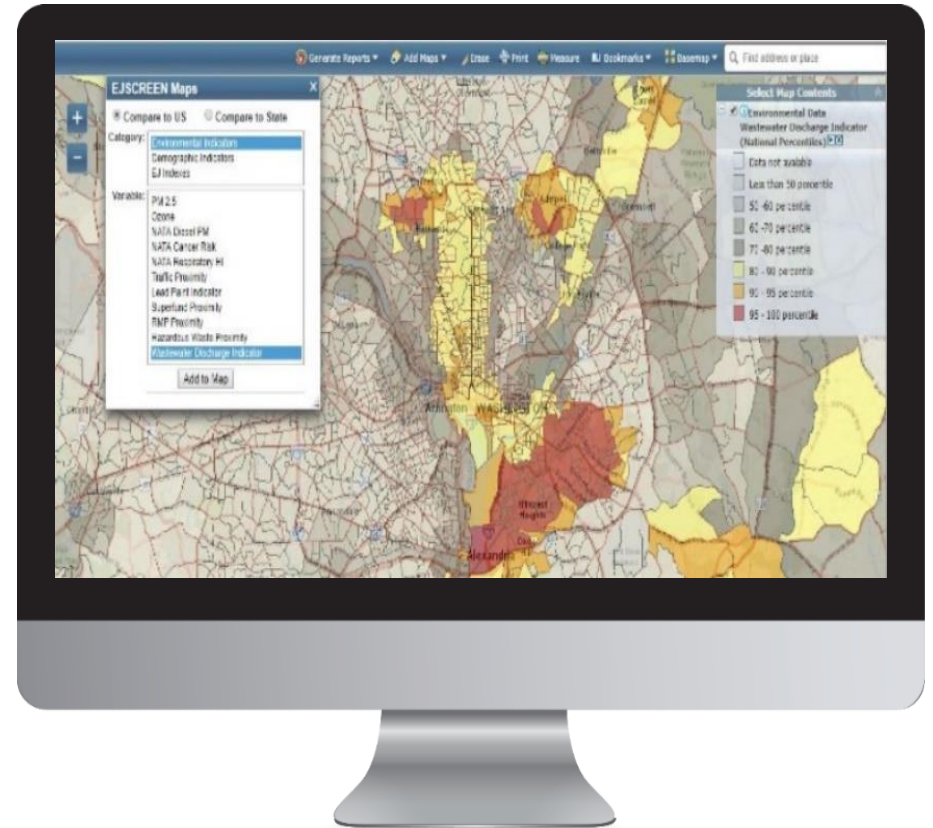


# EJSCREEN EPA's Environmental Justice Screening Tool



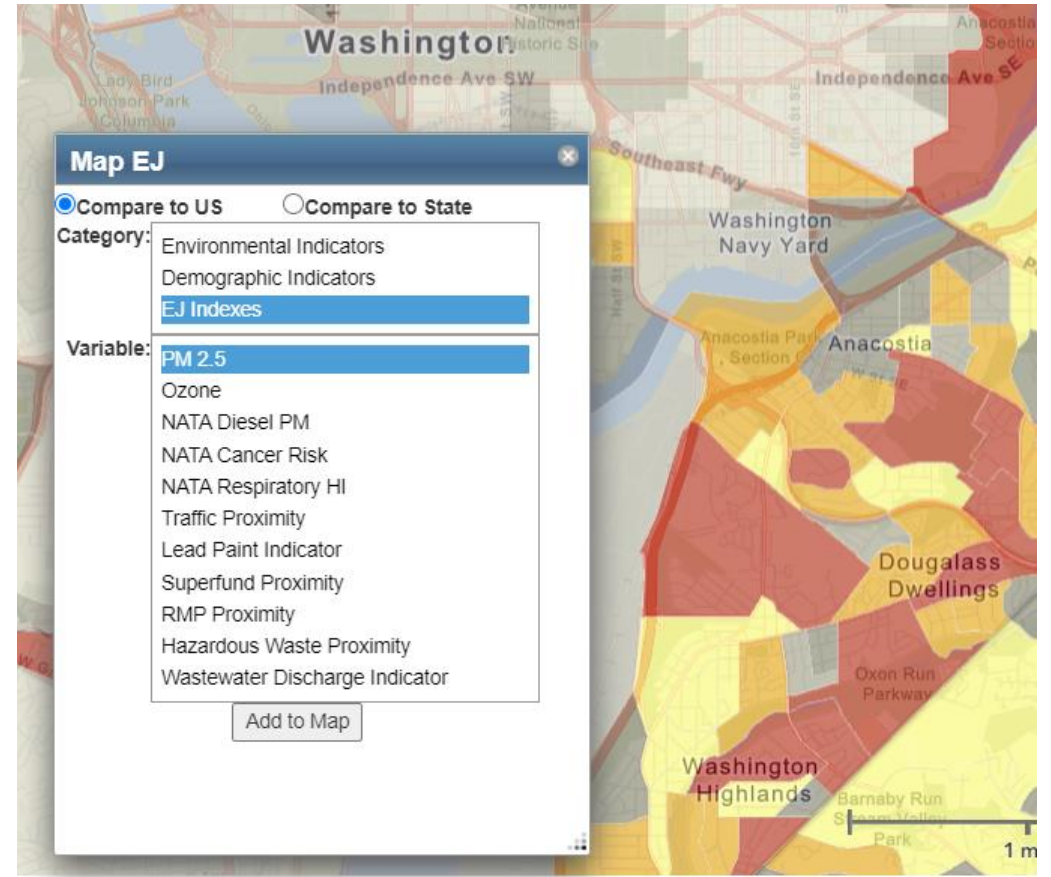
# What is EJSCREEN?

- EPA's web-based GIS tool for nationally consistent EJ screening and mapping
- Combines environmental and demographic data to highlight areas where **vulnerable populations** may be **disproportionately impacted** by pollution



# EJSCREEN Key Features

- 11 EJ Indexes – one for each environmental indicator
- Annually updated environmental data
- Annually updated demographics – from most recent U.S. Census Bureau American Community Survey (ACS)
- Highest resolution data available
- Ability to download data
- Accessibility / ease of use





# UNITS OF ANALYSIS



United States



State

primary governmental divisions of the United States.



County

Largest divisions within states.



Census Tract

Collection of Census block groups, mostly between 1,200 and 8,000 people.



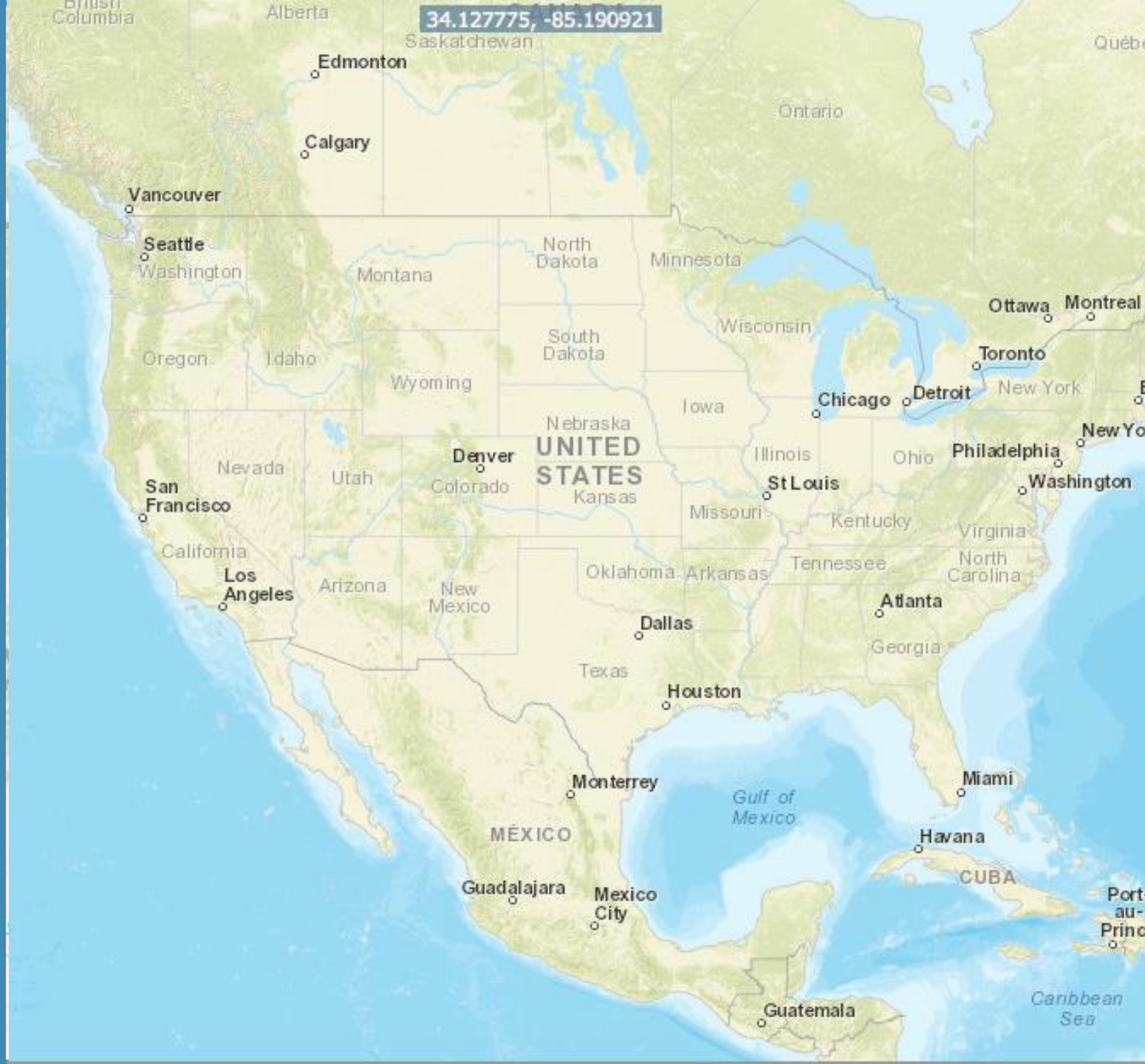
Block Group

Collection of residential blocks, mostly, between 600 and 3,000 people.



Block

Residential block, bounded on all sides by streets.



# Demographic Indicators

Indicator	Definition
Low-Income	Households income is less than or equal to twice the federal “poverty level”
Minority (People of color)	Individuals who list their racial status as a race other than white alone and/or list their ethnicity as Hispanic or Latino
Less than high school education	People age 25 or older whose education is short of a high school diploma
Linguistic isolation	Households in which all members age 14 years speak English less than “very well” (have difficulty with English)
Individuals under age 5	People in a block group under the age of 5
Individuals over age 64	People in a block group over the age of 64
Demographic index	$(\text{Low income} + \text{minority}) / 2$

\*Note: All demographic datasets are from the 2014 – 2018 Census ACS

# Environmental Indicators

Indicator	Description	Year
NATA cancer risk	Lifetime cancer risk from inhalation of air toxics	2014
NATA respiratory hazard index	Air toxics respiratory hazard index (ratio of exposure concentration to health-based reference concentration)	2014
NATA diesel particulate matter	Diesel particulate matter level in air	2014
Particulate matter 2.5	Annual average of PM 2.5 levels in the air	2017
Ozone	Ozone summer seasonal avg. of daily maximum	2017
Traffic proximity and volume	Count of vehicles on major roads, divided by distance in meters	2017

# Environmental Indicators (cont'd)

Indicator	Description	Year
Lead paint indicator	Percent of housing units built pre-1960, as indicator of potential lead paint exposure	2014 - 2018
Proximity to Risk Management Plan sites	Count of RMP (potential chemical accident management plan) facilities within 5 km, each divided by distance in kilometers	2020
Proximity to Hazardous Waste Facilities	Count of hazardous waste facilities (TSDFs and LQGs) within 5 km, each divided by distance in kilometers	2020
Proximity to National Priorities List sites	Count of proposed or listed NPL - also known as Superfund - sites within 5 km, each divided by distance in kilometers	2020
Wastewater Discharge Indicator	RSEI modeled Toxic Concentrations at stream segments within 500 meters, divided by distance in kilometers	2020