

# Toxics Release Inventory (TRI)



**How To Access Data About  
Industrial Chemical Releases  
In Your Community**



# Overview

- **What** is the Toxics Release Inventory?
- **Who** has to report to TRI?
- **Why** is TRI important to Environmental Justice communities?
- **Which** are the limitations of TRI?
- **How** to access TRI Data?
  - Live Demo on how to access TRI Data



# What is the Toxics Release Inventory?



- TRI is an EPA information resource that can help you learn about toxic chemical releases from certain facilities **in your neighborhood.**
- TRI can tell you about:



Releases



Waste transfers



Recycling



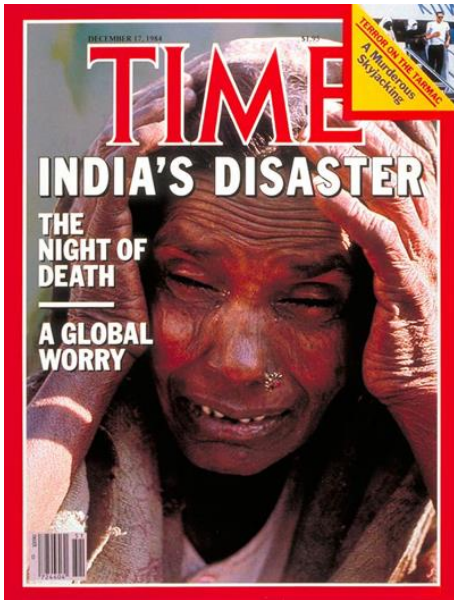
Pollution prevention



- TRI includes data from more than **21,000** facilities across the country and covers **767** individual chemicals and **33** chemical categories.



## Why was the Toxics Release Inventory created?



### **Bhopal, India December 1984**

- Methyl isocyanate gas was released at a Union Carbide chemical plant.
- Thousands died the first night, thousands more since and survivors continue to suffer with permanent disabilities.

### **Institute, West Virginia August 1985**

- Chemicals released at a similar facility in the U.S.
- More than 100 people hospitalized.

These events led to the passage of the Emergency Planning and Community Right-to-Know Act (EPCRA) by Congress in 1986, which mandated the enactment of EPA's TRI program.



## Why is TRI important to Environmental Justice communities?

### TRI can help EJ communities:

- Identify **how many TRI facilities** operate in the community **and where they are located**.
- Identify **which chemicals are being released** by TRI facilities.
- **Track increases or reductions** of toxic chemical releases from facilities located in the community over time.
- **Compare the toxic chemical releases and pollution prevention efforts of facilities** in one location with similar facilities across the country.
- **Prioritize efforts to reduce pollution** from facilities located in the community.

## Which facilities must report to TRI?

- Facility must be in a **TRI-covered industry sector or category**, including:



**Manufacturing  
Facilities**



**Coal/Oil  
Electricity  
Generation**



**Certain Mining  
Facilities**



**Hazardous Waste  
Management**



**Federal Facilities**

- Facility must have the equivalent of at least **10 full-time employees**.
- Facility must manufacture, process or use more than a **certain threshold amount of a TRI-listed toxic chemical per year**.

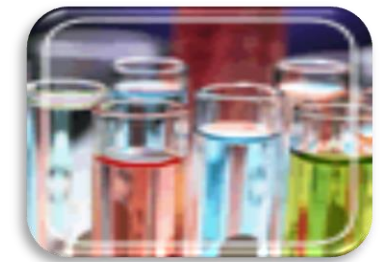
# Industrial Sectors Covered

Industrial Sector	Notes
Manufacturing	Facilities engaged in the mechanical or chemical transformation of materials or substances into new products
Metal mining	Not including metal mining services, and uranium, radium, and vanadium ores
Coal mining	Not including coal mining services
Electrical utilities	Limited to facilities that combust coal and/or oil for the purpose of generating electricity for distribution in commerce
Treatment, Storage, and Disposal facilities	Limited to facilities regulated under the Resource Conservation and Recovery Act, Subtitle C, 42 U.S.C. Section 6921 et seq.
Solvent recovery services	Limited to facilities primarily engaged in solvent recovery services on a contract or fee basis
Chemical distributors	Facilities engaged in the wholesale distribution of chemicals and allied products
Petroleum bulk terminals	Facilities engaged in the wholesale distribution of crude petroleum and petroleum products from bulk liquid storage facilities
Federal facilities	Federal facilities (covered by Executive Order 13423)



**A facility meeting all applicability criteria must file a Form R report for a Section 313 chemical if the facility:**

- Manufactured or Processed more than **25,000** pounds of the chemical in the reporting year, or
- Otherwise Used more than **10,000** pounds of the chemical in the reporting year, or
- For **Persistent, Bioaccumulative and Toxic (PBT) chemicals** are subject to lower thresholds of **100** pounds, **10** pounds or **0.1 grams** (for dioxins) in the reporting year.





## What information do facilities report to TRI?

- On-site (at facility) releases of TRI chemicals to:
  - Air
  - Water
  - Land (e.g. landfills)
- Transfer of chemical waste to off-site locations
- Other waste management
  - Recycling
  - Treatment
  - Energy Recovery
- Pollution Prevention Activities





## Which are the limitations of TRI data?

- **Annual data** – collected from TRI reporting facilities each year
- Covers many, but **not all chemical releases** and **not all industry sectors**
- **Small facilities are not included** (under 10 employees)
- **Does not cover all sources of pollution**, (e.g. cars and trucks)
- **Does not describe how long or how often chemicals were released**

For more information, see "*Factors to Consider When Using TRI Data*" at:  
[www.epa.gov/toxics-release-inventory-tri-program/factors-consider-when-using-toxics-release-inventory-data](http://www.epa.gov/toxics-release-inventory-tri-program/factors-consider-when-using-toxics-release-inventory-data)



## TRI Resources and Contact Information for EJ Communities

- **To learn more about TRI check out the new improved TRI search interface:** [www.epa.gov/tri/#trisearch](http://www.epa.gov/tri/#trisearch)
- **TRI Information Center:** (800) 424-9346  
*(Select option #3 from menu – 10 am - 5:00 pm ET)*
- **To email a question to a TRI program expert:** [tri.help@epa.gov](mailto:tri.help@epa.gov)
- **TRI Contacts:** [www.epa.gov/tri/contacts](http://www.epa.gov/tri/contacts)
- **TRI Regional Coordinators:** [www.epa.gov/tri/regionalcoordinators](http://www.epa.gov/tri/regionalcoordinators)



## TRI Resources and Contact Information for EJ Communities

- **To learn more about TRI check out the new improved TRI search interface:** [www.epa.gov/tri/#trisearch](http://www.epa.gov/tri/#trisearch)
- **TRI Information Center:** (800) 424-9346  
*(Select option #3 from menu – 10 am - 5:00 pm ET)*
- **To email a question to a TRI program expert:** [tri.help@epa.gov](mailto:tri.help@epa.gov)
- **TRI Contacts:** [www.epa.gov/tri/contacts](http://www.epa.gov/tri/contacts)
- **TRI Regional Coordinators:** [www.epa.gov/tri/regionalcoordinators](http://www.epa.gov/tri/regionalcoordinators)

# TRI Search



TRI Search is an EJ community-oriented mapping tool located at the bottom of EPA's TRI homepage (go to [epa.gov/tri](https://epa.gov/tri)).

Various search options are available.

The best way to learn about nearby TRI toxic releases is to use the ADDRESS option.

- Enter name of city, neighborhood, school, etc. Then click "View Search Results."

You can also use "View Current Location" search option (*but it may not work on some computers/with certain browser settings*)

**EPA Toxics Release Inventory** How to Search

**TRI SEARCH**

Search below to identify industrial facilities in your community that release chemicals into the air, water, and land. Learn what chemicals these facilities release, how these facilities are reducing releases, and potential health impacts of these releases.

To start, select **View Current Location** or select one of the search option tabs below.

**Address** | State, County, City or ZIP Code | Metro Area | Watershed | Tribal Land | TRI Facility Name

Enter an address or choose **View Current Location** to search for facilities.

North Charleston, SC **View Search Results** OR **View Current Location**

Watch a short instructional video for guidance on how to search for TRI facilities **EXIT**.

*NOTE: the TRI Program covers many—but not all—industry sectors and chemicals. Additionally, some facilities within a covered sector may not meet TRI reporting criteria.*



# Map of TRI Facilities



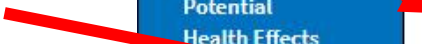
The green bar at top displays the number of TRI facilities located within the selected search radius.



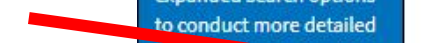
You can select a search radius between 1 to 100 miles of the selected search radius. (The default radius is 10 miles.)



The size of the dots indicate which facilities reported the highest amount of toxic releases during the latest TRI reporting year.



This legend provides info about the range of toxic releases based on the color of the dots (. The deepest purple dots indicate the highest to light purple/white).



# Map of TRI Facilities



Selecting "Potential Risk Score" shows a different facility as the primary driver of highest potential risk to human health regarding TRI toxic releases within 10 miles of North Charleston, SC.

More info provided about "potential risk" later in this presentation.

**EPA Toxics Release Inventory** How to Search

Summary of 31 TRI facilities within 10 miles of North Charleston, South Carolina BACK FORWARD

**Map of TRI Facilities - Reporting Year 2019** MORE INFO FULLSCREEN PRINT

To access data about an individual facility, click on the facility location and then the green checkmark button. Next, select "Facilities Summary" from the left menu to find basic facility information, an EJ report and demographic statistics.

Distance Selection  
Change your search radius  
Miles: 10

Dot size represents:  
 Releases (lb)  
 Potential Risk Score

Dot color represents:  
 Potential Risk Score  
 Industry Sector

**RSEI Score by Facility in 2019**

- No RSEI Score
- 0
- >0 - 100
- 101 - 10,000
- 10,001 - 100,000
- 100,001 - 1,000,000
- >1,000,000

Show other EPA-regulated facilities

Default View Satellite View

Summerville, Goose Creek, Hanahan, Carolina Bay, Charleston, Mount Pleasant, Ravenel, SC 642, US 17, SC 61, SC 30, I 26, I 526

© OpenStreetMap contributors

**Left Menu:**  
New Search  
Map of TRI Facilities  
Demographic Profile  
Facilities Summary  
Releases  
Waste Managed  
Pollution Prevention  
Potential Risk  
Potential Health Effects  
Compliance and Enforcement  
TRI Search Plus  
EJSCREEN  
Most Recent Reporting Year: 2019



# Map of TRI Facilities



Selecting "Industry Sector" displays different colored dots that indicate the industry sector for each of the TRI facilities. (Examples include Chemicals, Paper, Foods industry sectors).



**EPA Toxics Release Inventory** How to Search

Summary of 31 TRI facilities within 10 miles of North Charleston, South Carolina BACK FORWARD

[New Search](#)

**Map of TRI Facilities**

- Demographic Profile
- Facilities Summary**
- Releases
- Waste Managed
- Pollution Prevention
- Potential Risk
- Potential Health Effects
- Compliance and Enforcement

**TRI Search Plus**  
View more data and expanded search options to conduct more detailed analyses.

**E.JSCREEN**  
EPA's environmental justice screening and mapping tool.

Most Recent Reporting Year: 2019

## Map of TRI Facilities - Reporting Year 2019

MORE INFO FULLSCREEN PRINT

To access data about an individual facility, click on the facility location and then the green checkmark button. Next, select "Facilities Summary" from the left menu to find basic facility information, an EJ report and demographic statistics.

Distance Selection  
Change your search radius

Miles: 10

Dot size represents:

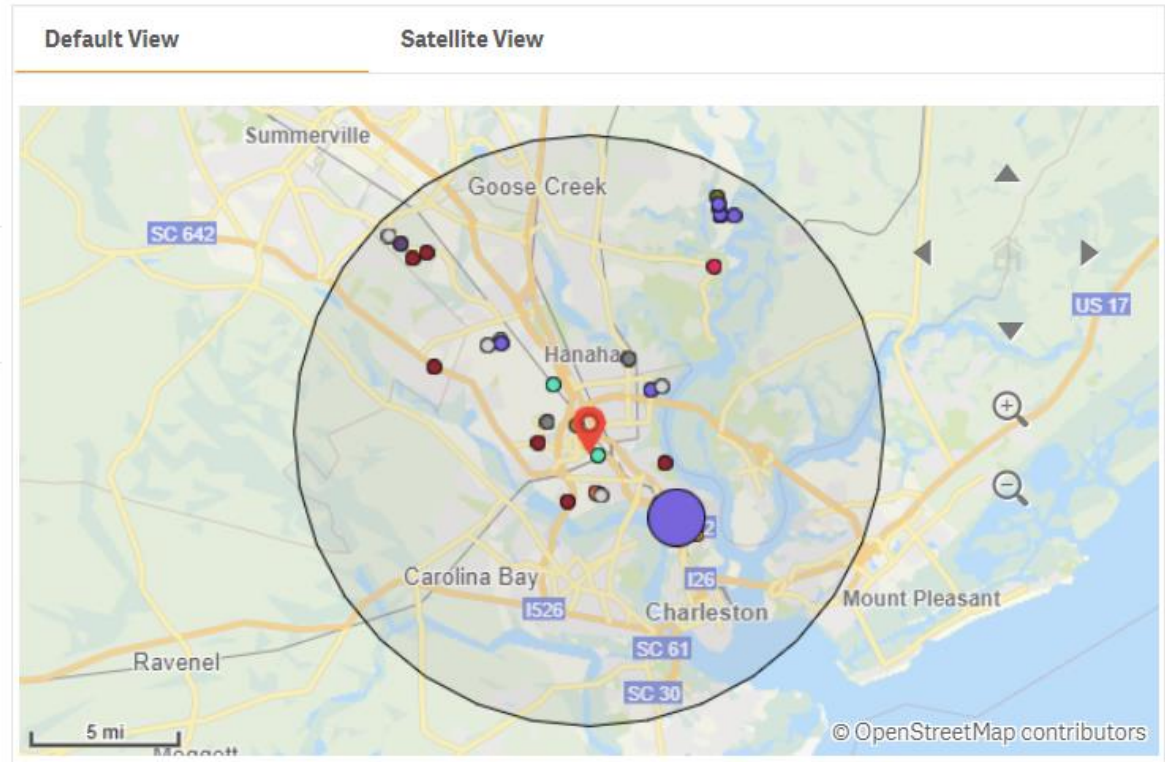
- Releases (lb)
- Potential Risk Score

Dot color represents:

- Potential Risk Score
- Industry Sector

Facilities with gray dots indicate more than one industry sector.

Show other EPA-regulated facilities



# Demographic Profile

EPA
How to Search

Toxics Release Inventory
Summary of 31 TRI facilities within 10 miles of North Charleston, South Carolina

← BACK
FORWARD →

**Demographic Profile**

Releases

Waste Managed

Pollution Prevention

Potential Risk

Potential Health Effects

Compliance and Enforcement

---

**TRI Search Plus**

View more data and expanded search options to conduct more detailed analyses.

---

**EJSCREEN**

EPA's environmental justice screening and mapping tool.

Most Recent Reporting Year: 2019

## Demographic Profile PRINT

Change Your Search Radius (Miles):

Select a Demographic Indicator Only one indicator is shown at a time.

- Demographic Index
- Low Income
- People of Color
- Less Than HS Education
- Linguistically Isolated
- Children Under 5
- Seniors Over 64

Dot size represents:

- Releases (lb)
- Potential Risk Score

**National Percentiles for Demographic Index**

National Percentiles	Percentages
95 - 100 percentile	≥ 80.78
90 - 95 percentile	< 80.78
80 - 90 percentile	< 72.44
70 - 80 percentile	< 58.08
60 - 70 percentile	< 46.08
50 - 60 percentile	< 36.55
Less than 50 percentile	< 29.44
Data not available	N/A

Census block groups on the map are colored based on the selected indicator's percentage value and national percentile. Data are based on EJSCREEN.

Demographic data tell you about certain characteristics of the people who live near the facilities in your search area. In the map below, locations of TRI facilities are shown on top of [Census block groups](#).

Default View
Satellite View

Demographic data tell you about certain characteristics of the people who live near the facilities in your selected search. The location of TRI facilities are shown on top of demographic data from EPA's EJSCREEN.

This legend explains what the colors for each of the various demographic indicators represent.



# Demographic Profile



Summary of 31 TRI facilities within 10 miles of North Charleston, South Carolina

[BACK](#) [FORWARD](#)

- New Search
- Map of TRI Facilities
- Facilities Summary

### Demographic Profile

- Releases
- Waste Managed
- Pollution Prevention
- Potential Risk
- Potential Health Effects
- Compliance and Enforcement

### TRI Search Plus

View more data and expanded search options to conduct more detailed analyses.

### EJSCREEN

EPA's environmental justice screening and mapping tool.

Most Recent Reporting Year: 2019

## Demographic Profile

[MORE INFO](#)

[PRINT](#)

Change Your Search Radius (Miles):

Demographic data tell you about certain characteristics of the people who live near the facilities in your search area. In the map below, locations of TRI facilities are shown on top of [Census block groups](#).

### Select a Demographic Indicator

Only one indicator is shown at a time.

- [Demographic Index](#)
- [Low Income](#)
- [People of Color](#)
- [Less Than HS Education](#)
- [Linguistically Isolated](#)
- [Children Under 5](#)
- [Seniors Over 64](#)

### Dot size represents:

- [Releases \(lb\)](#)
- [Potential Risk Score](#)

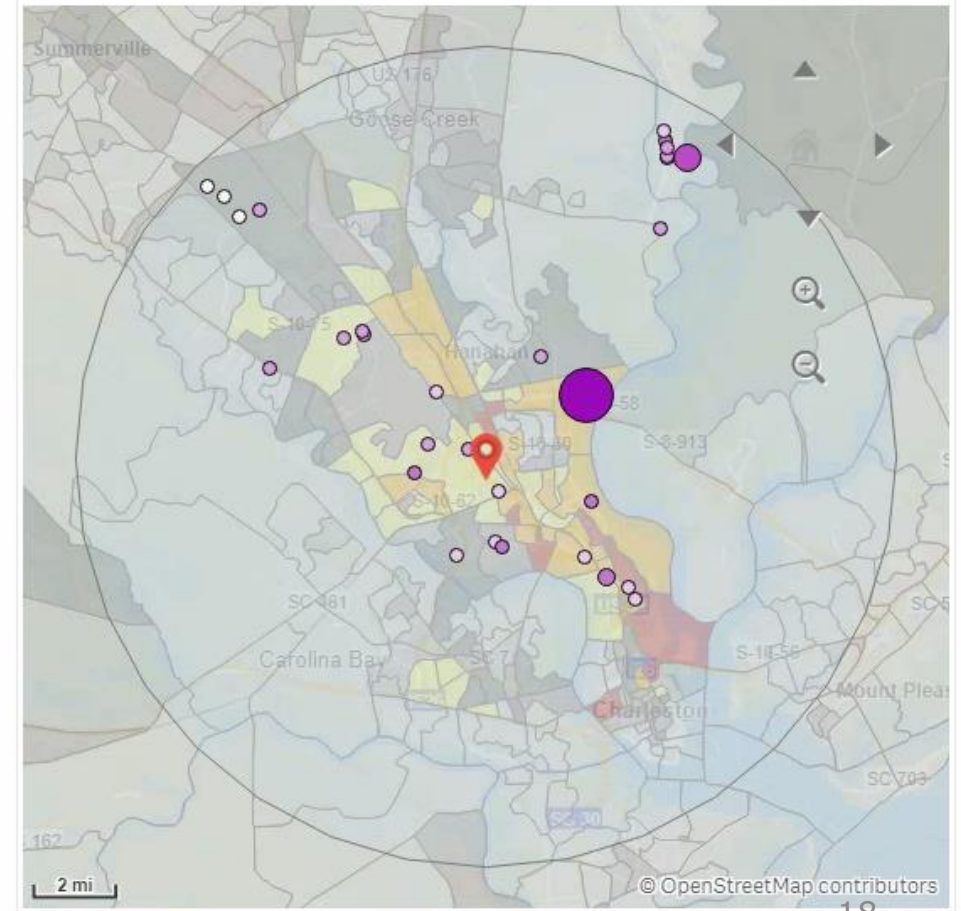
### National Percentiles for Demographic Index

National Percentiles	Percentages
95 - 100 percentile	≥ 80.78
90 - 95 percentile	< 80.78
80 - 90 percentile	< 72.44
70 - 80 percentile	< 58.08
60 - 70 percentile	< 46.00
50 - 60 percentile	< 36.55
Less than 50 percentile	< 29.44
Data not available	N/A

Census block groups on the map are colored based on the selected indicator's [percentage value and national percentile](#). Data are based on EJSCREEN.

Default View

Satellite View



Demographic data provides information about certain characteristics of the people who live near the facilities in your selected search. The location of TRI facilities are shown on top of demographic data from EPA's EJSCREEN.

"Demographic Index" is the combination of percent low income and percent people of color.

A legend explains what each of the colors represent in the demographic index.



# TRI Print-Friendly Report



Select "Print-friendly Report" tab in the "Facilities Summary" section of the left-side blue menu.

You can make double-sided photocopies of the report and distribute them as a handout at town hall events, neighborhood association meetings, etc.

This bar chart displays the top 10 facilities in your search selection with the highest total releases.

In this example, the majority of releases were emitted to air.

**EPA Toxics Release Inventory**  
Summary of 31 TRI facilities within 10 miles of North Charleston, South Carolina

**Facilities Summary - Most Recent Reporting Year: 2019**

For details about an individual facility, go to the Facility Comparison Table.

[Print-Friendly Report](#) | [Top 10 Facilities](#) | [Facility Comparison Table](#) [PRINT](#)

You can print this report for use as a handout. For ideas about sharing TRI information, see the TRI [What You Can Do](#) page.

	Current Selection	United States
<b>Number of TRI Facilities</b>	31	21,458
<b>Total Production-Related Waste Managed</b>	78,598,928 lb	30,621,729,520 lb
<b>Total Disposal or Other Releases</b>	2,139,213 lb	3,417,579,617 lb
<b>Total On-site</b>	1,918,471 lb	2,959,259,558 lb
• Air	1,869,077 lb	600,223,665 lb
• Water	44,041 lb	201,211,355 lb
• Land	5,353 lb	2,157,824,538 lb
<b>Total Off-Site</b>	220,742 lb	458,320,059 lb

Default View | Satellite View

**Top Ten Facilities Based on Total Disposal or Other Releases in 2019**

Facility Name	2019 Releases (lb)
KAPSTONE PAPER & PACKAGING CORP (Industry Sector 322 Paper)	~1,300,000
SUN CHEMICAL BUSHY PARK FACILITY (Industry Sector 325 Chemicals)	~500,000
INGEVITY SOUTH CAROLINA LLC CHARLESTON CHEMICAL PLANT	~100,000
LANXESS CORP (Industry Sector 325 Chemicals)	~50,000
DETYENS SHIPYARD (Industry Sector 336 Transportation Equipment)	~20,000
BOEING SOUTH CAROLINA (Industry Sector 336 Transportation Equipment)	~10,000
SYMRISE INC (Industry Sector 325 Chemicals)	~5,000
SALISBURY ELECTRICAL SAFETY LLC (Industry Sector 339 Miscellaneous)	~2,000
LANXESS CORP BUSHY PARK PLANT (Industry Sector 325 Chemicals)	~1,000
FEDERAL LAW ENFORCEMENT TRAINING CENTER (Industry Sector 999 Other)	~500

# Top 10 Facilities

Select the "Top 10 Facilities" tab in "Facilities Summary" to view 2 charts:

First chart shows the TRI facilities that released the highest amount of total disposal and other toxic releases by media (air, water, land, off-site) or by chemical (shown here).

2<sup>nd</sup> chart shows the top 10 TRI facilities with highest "potential risk score" by media or by chemical (shown here).

Hover over individual segments of the bar chart to view more detailed information.

Summary of 31 TRI facilities within 10 miles of North Charleston, South Carolina

Facilities Summary - Most Recent Reporting Year: 2019

For details about an individual facility, go to the Facility Comparison Table.

Print-Friendly Report | **Top 10 Facilities** | Facility Comparison Table

The default legend shows the releases quantity or RSEI Score by media type for the top 10 facilities. Click on "By Chemical" to change the legend to show the releases quantity or RSEI Score by chemical for the top 10 chemicals for the top 10 facilities.

**Top 10 Facilities Based on Total Disposal or Other Releases in 2019**

Facility	Releases (lb)
KAPSTONE PAPER & PACKAGING CORP (Industry Sector 322 Paper)	~1,400,000
SUN CHEMICAL BUSHY PARK FACILITY (Industry Sector 325 Chemicals)	~1,000,000
INGEVITY SOUTH CAROLINA LLC CHARLESTON CHEMICAL PLANT	~500,000
LANXESS CORP (Industry Sector 325 Chemicals)	~400,000
DETENS SHIPYARD (Industry Sector 336 Transportation Equipment)	~300,000
BOEING SOUTH CAROLINA (Industry Sector 336 Transportation Equipment)	~200,000
SYMRISE INC (Industry Sector 325 Chemicals)	~150,000
SALISBURY ELECTRICAL SAFETY LLC (Industry Sector 339 Miscellaneous)	~100,000
LANXESS CORP BUSHY PARK PLANT (Industry Sector 325 Chemicals)	~100,000
FEDERAL LAW ENFORCEMENT TRAINING CENTER (Industry Sector 999 Other)	~100,000

**Top 10 Facilities Based on RSEI Score in 2019**

Facility	2019 RSEI Score
LANXESS CORP (Industry Sector 325 Chemicals)	835,482
LANXESS CORP BUSHY PARK PLANT (Industry Sector 325 Chemicals)	~400,000
BOEING SOUTH CAROLINA (Industry Sector 336 Transportation Equipment)	~300,000
INGEVITY SOUTH CAROLINA LLC CHARLESTON CHEMICAL PLANT	~200,000
ROBERT BOSCH LLC - CHARLESTON PLANT (Industry Sector 336 Transportation Equipment)	~150,000
COOPER RIVER PARTNERS LLC (Industry Sector 999 Other)	~100,000
KAPSTONE PAPER & PACKAGING CORP (Industry Sector 322 Paper)	~100,000
EVERRIS NA INC (Industry Sector 325 Chemicals)	~100,000
SUN CHEMICAL BUSHY PARK FACILITY (Industry Sector 325 Chemicals)	~100,000
BOEING SOUTH CAROLINA (Industry Sector 336 Transportation Equipment)	~100,000
DETENS SHIPYARD (Industry Sector 336 Transportation Equipment)	~100,000

Chemical: Ethylene oxide  
2019 RSEI Score: 835,482

# TRI Facility Comparison Table



“Facility Comparison Table” tab provides a list of all the TRI facilities in your search selection.

Default displays the facilities with the highest RSEI score in descending order.

You can change sorting preference by clicking on a different column header.

Select “EJ Report” link to access environmental and demographic indicator data for each facility (*derived from EJSCREEN*).

EPA
Toxics Release Inventory
How to Search

Summary of 31 TRI facilities within 10 miles of North Charleston, South Carolina
 
[← BACK](#)
[FORWARD →](#)

[New Search](#)  
[Map of TRI Facilities](#)  
**Facilities Summary**  
[Demographic Profile](#)  
[Releases](#)  
[Waste Managed](#)  
[Pollution Prevention](#)  
[Potential Risk](#)  
[Potential Health Effects](#)  
[Compliance and Enforcement](#)  


---

[TRI Search Plus](#)  
View more data and expanded search options to conduct more detailed analyses.  


---

[EJSCREEN](#)  
EPA's environmental justice screening and mapping tool.  


---

Most Recent Reporting Year: 2019

## Facilities Summary - Most Recent Reporting Year: 2019

For details about an individual facility, go to the Facility Comparison Table.

[Print-Friendly Report](#)

[Top 10 Facilities](#)

[Facility Comparison Table](#)

[DEFINITIONS](#)

[DOWNLOAD](#)

To change the sorting order in the table, click on a column header.

For individual facility information, click on a facility name and then the green checkmark button.

Facility	Distance (Miles)	Releases (lb)	RSEI Score	EJ Report
<b>Totals</b>	-	2,139,213	1,009,588	
LANXESS CORP - 29415LBRGH2151K	4.13	64,570	902,701	<a href="#">Link</a>
MERCEDES-BENZ VANS LLC - 29456DMLRC851PA	8.21	4,035	35,069	<a href="#">Link</a>
INGEVITY SOUTH CAROLINA LLC CHARLESTON CHE...	2.50	93,352	22,648	<a href="#">Link</a>
ROBERT BOSCH LLC - CHARLESTON PLANT - 29418...	5.72	2,452	17,935	<a href="#">Link</a>
COOPER RIVER PARTNERS LLC - 29445MBYCRHIGHW	8.74	4,208	17,504	<a href="#">Link</a>
KAPSTONE PAPER & PACKAGING CORP - 29411WST...	2.87	1,360,478	8,955	<a href="#">Link</a>
EVERRIS NA INC - 29418GRCSR7200I	4.24	527	3,352	<a href="#">Link</a>
SUN CHEMICAL BUSHY PARK FACILITY - 29445SNC...	8.79	486,664	809	<a href="#">Link</a>
BOEING SOUTH CAROLINA - 2941WTHBNG54INT	1.79	24,875	325	<a href="#">Link</a>
DETYENS SHIPYARD - 29405DTYNS1670D	2.75	45,811	123	<a href="#">Link</a>
ALLIED AVIATION FUELING OF SOUTH CAROLINA LL...	1.48	270	57	<a href="#">Link</a>
US DOD DFSP CHARLESTON - 29406SDFNS5862N	2.81	751	46	<a href="#">Link</a>
KEMIRA CHEMICALS INC - 29445KMRCH1514B	8.53	4,235	33	<a href="#">Link</a>
EATON AEROSPACE - 29418TNRSP723CR	4.54	725	18	<a href="#">Link</a>

# TRI Total Releases by Chemical



“Releases” section in blue menu bar displays the top chemicals released by all the facilities in your search selection.

The default view displays the top chemicals released on-site as well as transferred off-site for all media (air, water and land).

Other filter options allow you to view releases by air, water or land – or specifically on-site releases or off-site transfers.

EPA
How to Search

**Summary of 31 TRI facilities within 10 miles of North Charleston, South Carolina**

[← BACK](#)
[FORWARD →](#)

[New Search](#)

[Map of TRI Facilities](#)

[Facilities Summary](#)

[Demographic Profile](#)

**Releases**

[Waste Managed](#)

[Pollution Prevention](#)

[Potential Risk](#)

[Potential Health Effects](#)

[Compliance and Enforcement](#)

---

[TRI Search Plus](#)

View more data and expanded search options to conduct more detailed analyses.

[EJSCREEN](#)

EPA's environmental justice screening and mapping tool.

*Most Recent Reporting Year: 2019*

**Releases** [MORE INFO](#)
Change Your Search Radius (Miles):

A "release" refers to different ways that toxic chemicals from industrial facilities enter the air, water and land. Releases include spilling, leaking, pumping, pouring, emitting, emptying, discharging, injecting, escaping, leaching, dumping, or disposing into the environment.

[By Chemical](#)
[Trend by Media and Year](#)
[PRINT](#)
[DOWNLOAD](#)

**Total Disposal or Other Releases by Chemical for 2019**

**Total Releases: 2,139,213 lb**

Chemical	Percentage
Methanol	59.7%
Ammonia	9.3%
Hydrogen sulfide	5.9%
Manganese and manganese compounds	5.2%
Zinc and zinc compounds	7.1%
Xylene (mixed isomers)	-
Barium and barium compounds	-
Acetaldehyde	-
Hydrochloric acid	-
Butyl alcohol, n-	-
Others	-

**On- and Off-site**

On-site

Air

Water

Land

Off-site

# TRI Trends Data

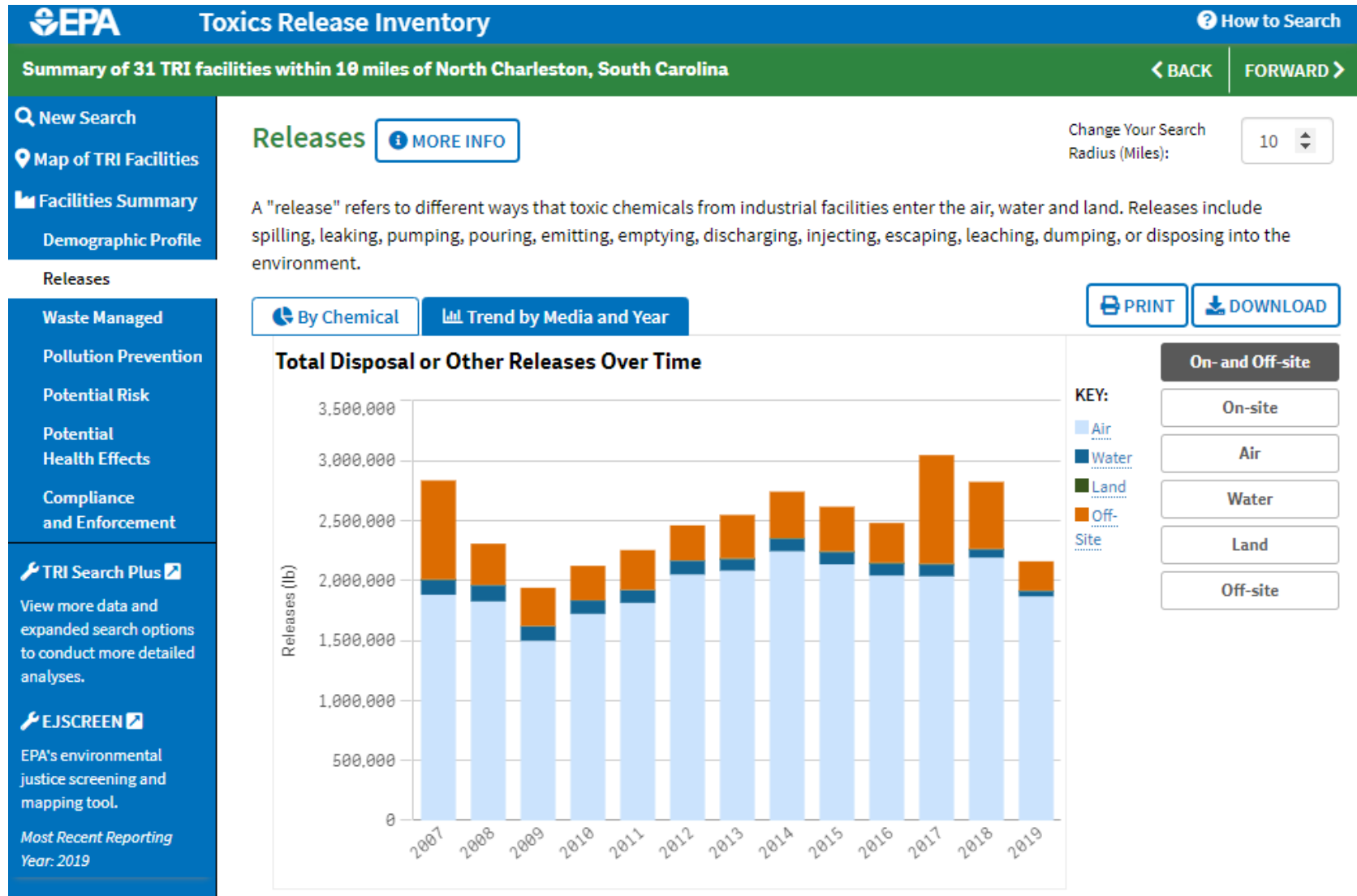
## Total Releases by Media and Year



Select "Trend by Media and Year" tab to learn whether total releases for the TRI facilities in your search selection increased or decreased over time

In this example, the majority of total releases were emitted to air.

The same filter options are available as those displayed in the previous slide.







**We Are Happy To Assist You!**

## **Ezequiel Velez**

US EPA Region 4  
TRI Program Coordinator  
(404) 562-9191  
velez.ezequiel@epa.gov

## **Christina Guthrie**

US EPA Headquarters  
Data Analysis & Dissemination Branch  
(202) 564-8846  
uthrie.christina@epa.gov

