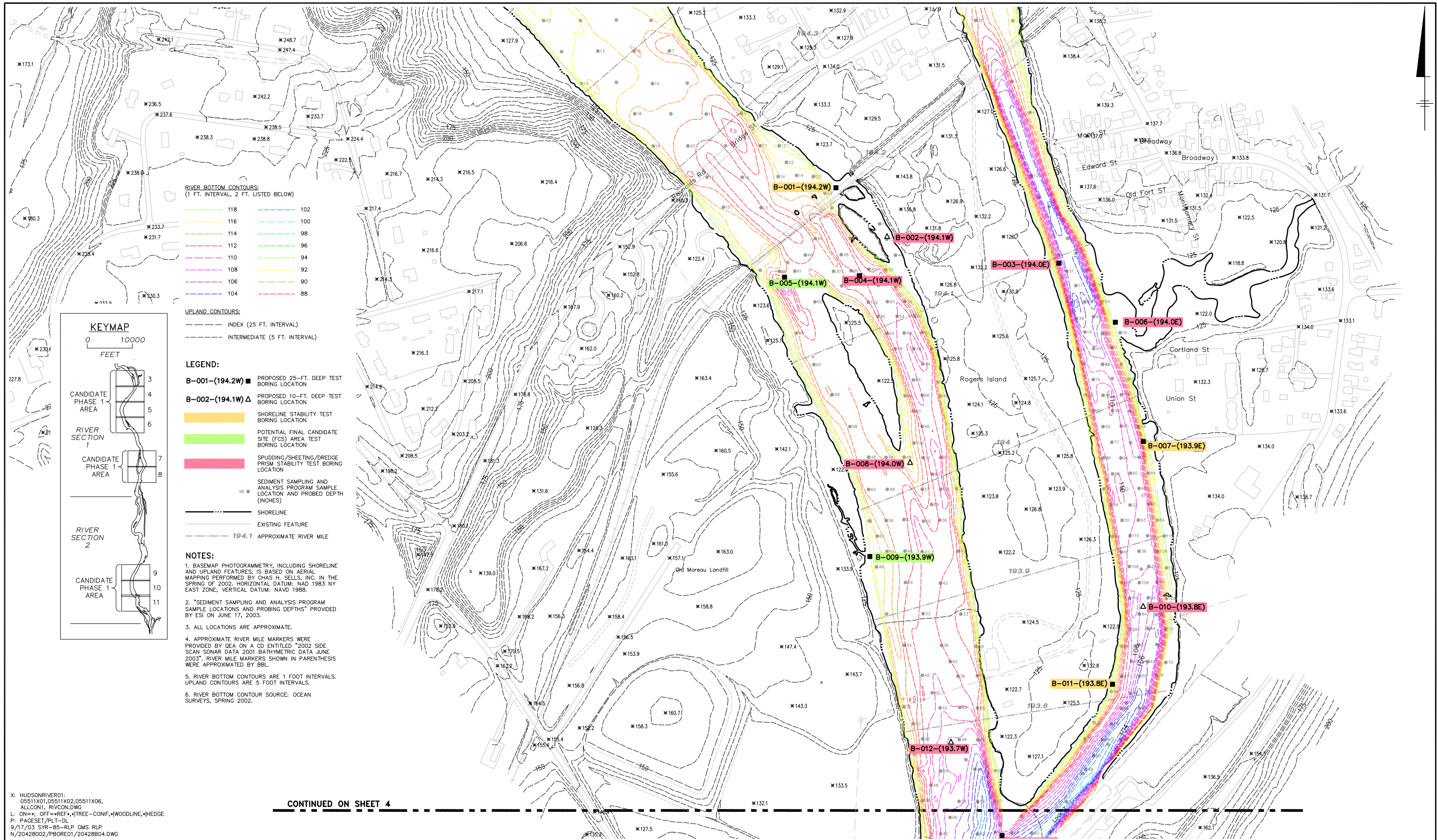


Notes:
 SEDC = Supplemental Engineering Data Collection
 SOPs = Standard Operating Procedures
 SPT = Standard Penetration Test

GENERAL ELECTRIC COMPANY
 HUDSON RIVER PCBs SUPERFUND SITE
SEDC WORK PLAN

GEOTECHNICAL TESTING AND ANALYSIS FLOW DIAGRAM





CONTINUED ON SHEET 4

X: HUDSONRIVER01;
05511X01,05511X02,05511X06,
ALLCON1, RIVCON.DWG
L: ON=*; OFF=*REF*;*TREE-CONF,*WOODLINE,*HEDGE
P: PAGESET/PLT-DL
9/17/03 SYR-85-RLP GMS RLP
N/20428002/PB0RE01/20428B04.DWG

Graphic Scale
1"=200'
0 200' 400'

THIS DRAWING WAS PREPARED AT THE SCALE INDICATED IN THE TITLE BLOCK. INACCURACIES IN THE STATED SCALE MAY BE INTRODUCED WHEN DRAWINGS ARE REPRODUCED BY ANY MEANS. USE THE GRAPHIC SCALE BAR IN THE TITLE BLOCK TO DETERMINE THE ACTUAL SCALE OF THIS DRAWING.

| No. | Date | Revisions | Init |
|-----|------|-----------|------|
| | | | |

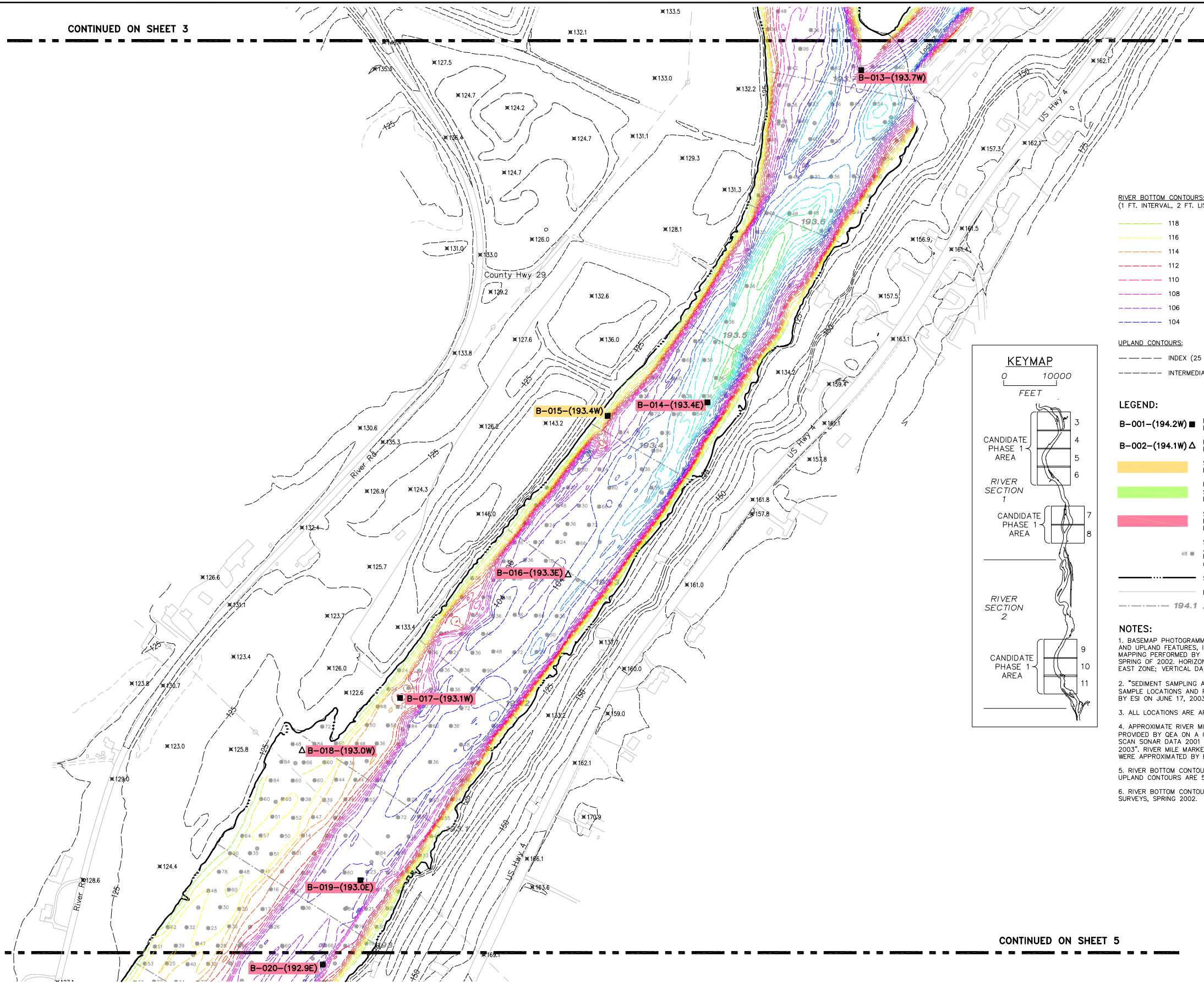
| | |
|------------------------------|-------------|
| Professional Engineer's Name | |
| Professional Engineer's No. | |
| State | Date Signed |
| Project Mgr. | Designed by |
| | Drawn by |



GENERAL ELECTRIC COMPANY • HUDSON RIVER PCBs SUPERFUND SITE
HUDSON RIVER REMEDIAL DESIGN - YEAR 2 SUPPLEMENTAL ENGINEERING DATA COLLECTION
**PROPOSED BORING LOCATIONS
(RIVER MILE 194.4 TO 193.8 -
CANDIDATE PHASE 1 AREA)**

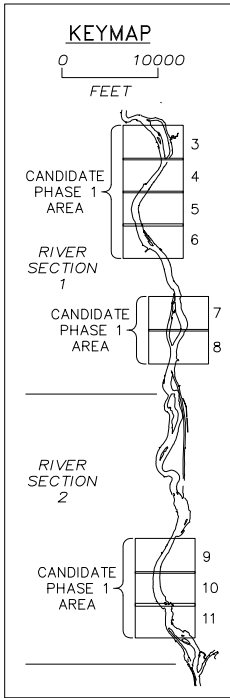
BBL Project No.
20428.002
Date
SEPTEMBER 2003
Blasland, Bouck & Lee, Inc.
Corporate Headquarters
6723 Towpath Road
Syracuse, NY 13214
315-446-9120

CONTINUED ON SHEET 3



- RIVER BOTTOM CONTOURS:**
(1 FT. INTERVAL, 2 FT. LISTED BELOW)
- 118
 - 116
 - 114
 - 112
 - 110
 - 108
 - 106
 - 104
 - 102
 - 100
 - 98
 - 96
 - 94
 - 92
 - 90
 - 88

- UPLAND CONTOURS:**
- INDEX (25 FT. INTERVAL)
 - INTERMEDIATE (5 FT. INTERVAL)

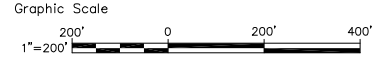


- LEGEND:**
- B-001-(194.2W) ■ PROPOSED 25-FT. DEEP TEST BORING LOCATION
 - B-002-(194.1W) △ PROPOSED 10-FT. DEEP TEST BORING LOCATION
 - SHORELINE STABILITY TEST BORING LOCATION
 - POTENTIAL FINAL CANDIDATE SITE (FCS) AREA TEST BORING LOCATION
 - SPUDDING/SHEETING/DREDGE PRISM STABILITY TEST BORING LOCATION
 - SEDIMENT SAMPLING AND ANALYSIS PROGRAM SAMPLE LOCATION AND PROBING DEPTH (INCHES)
 - SHORELINE
 - EXISTING FEATURE
 - 194.1 APPROXIMATE RIVER MILE

- NOTES:**
1. BASEMAP PHOTOGRAMMETRY, INCLUDING SHORELINE AND UPLAND FEATURES, IS BASED ON AERIAL MAPPING PERFORMED BY CHAS H. SELLS, INC. IN THE SPRING OF 2002. HORIZONTAL DATUM: NAD 1983 NY EAST ZONE; VERTICAL DATUM: NAVD 1988.
 2. "SEDIMENT SAMPLING AND ANALYSIS PROGRAM SAMPLE LOCATIONS AND PROBING DEPTHS" PROVIDED BY ESI ON JUNE 17, 2003.
 3. ALL LOCATIONS ARE APPROXIMATE.
 4. APPROXIMATE RIVER MILE MARKERS WERE PROVIDED BY GE A ON A CD ENTITLED "2002 SIDE SCAN SONAR DATA 2001 BATHYMETRIC DATA JUNE 2003". RIVER MILE MARKERS SHOWN IN PARENTHESES WERE APPROXIMATED BY BBL.
 5. RIVER BOTTOM CONTOURS ARE 1 FOOT INTERVALS. UPLAND CONTOURS ARE 5 FOOT INTERVALS.
 6. RIVER BOTTOM CONTOUR SOURCE: OCEAN SURVEYS, SPRING 2002.

X: HUDSONRIVER01;
05511X01,05511X02,05511X06,
ALLCON1, RIVCON.DWG
L: ON=; OFF=REF*;|TREE=CONIF,|WOODLINE,|HEDGE
P: PAGESET/PLT-DL
9/17/03 SYR-85-RLP GMS RLP
N/20428002/PBORE01/20428B04.DWG

CONTINUED ON SHEET 5



THIS DRAWING WAS PREPARED AT THE SCALE INDICATED IN THE TITLE BLOCK. INACCURACIES IN THE STATED SCALE MAY BE INTRODUCED WHEN DRAWINGS ARE REPRODUCED BY ANY MEANS. USE THE GRAPHIC SCALE BAR IN THE TITLE BLOCK TO DETERMINE THE ACTUAL SCALE OF THIS DRAWING.

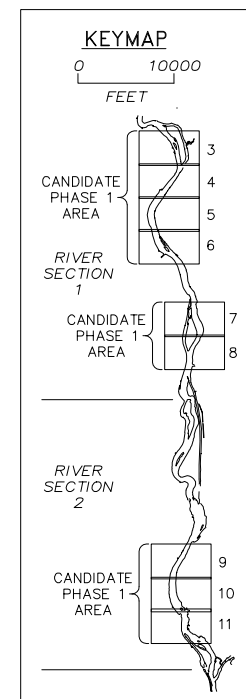
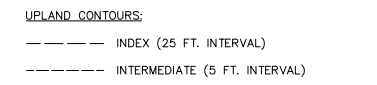
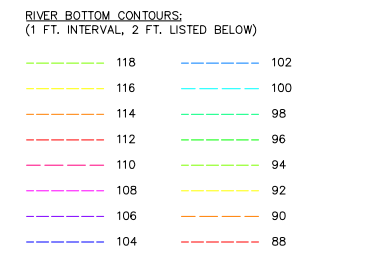
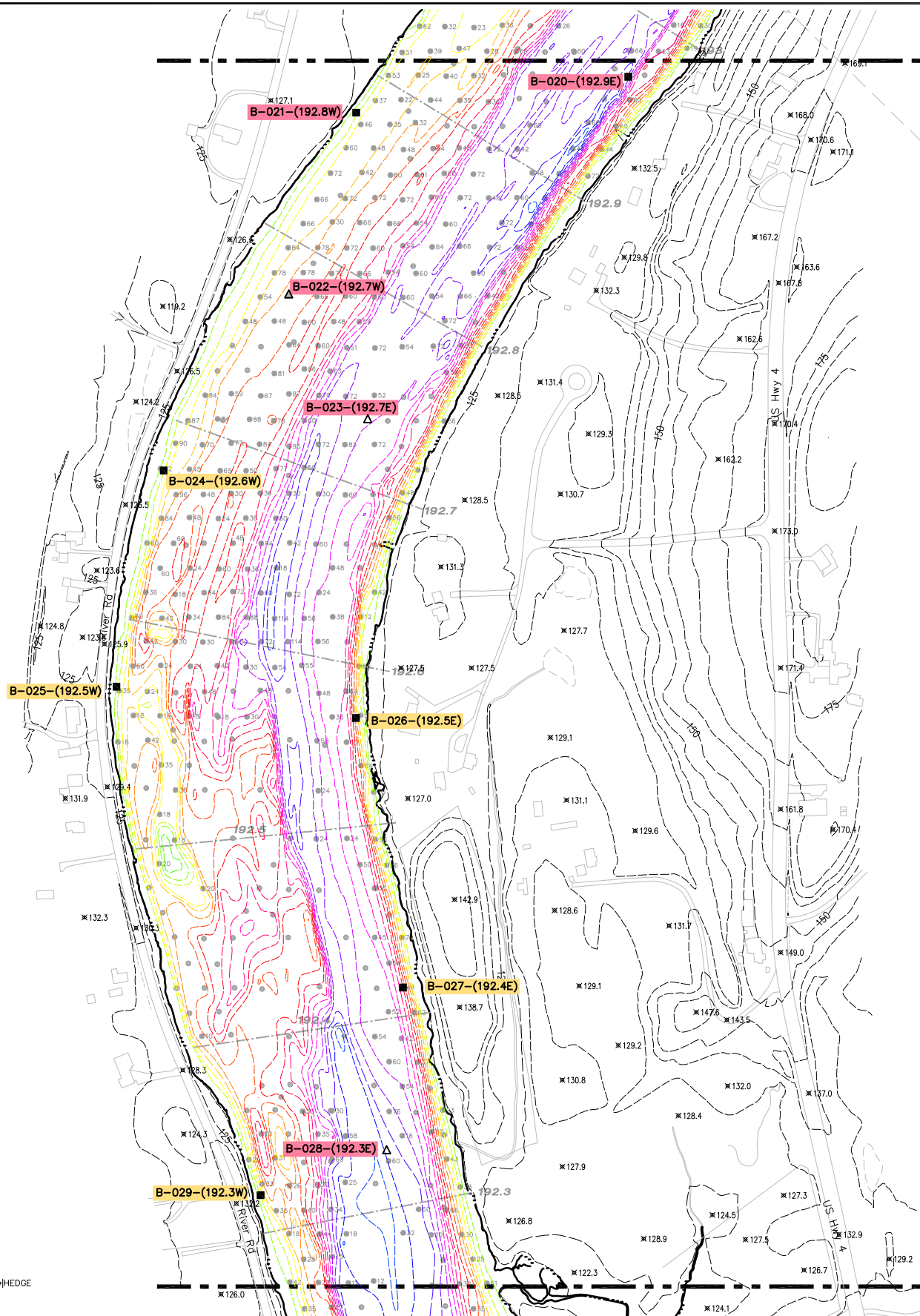
| No. | Date | Revisions | Init |
|-----|------|-----------|------|
| | | | |
| | | | |

| | |
|------------------------------|-------------|
| Professional Engineer's Name | |
| Professional Engineer's No. | |
| State | Date Signed |
| Project Mgr. | Designed by |
| | Drawn by |



GENERAL ELECTRIC COMPANY • HUDSON RIVER PCBs SUPERFUND SITE
HUDSON RIVER REMEDIAL DESIGN - YEAR 2 SUPPLEMENTAL ENGINEERING DATA COLLECTION
PROPOSED BORING LOCATIONS
(RIVER MILE 193.8 TO 193.0 -
CANDIDATE PHASE 1 AREA)

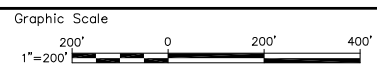
| |
|--|
| BBL Project No. 20428.002 |
| Date SEPTEMBER 2003 |
| Blasland, Bouck & Lee, Inc. Corporate Headquarters 6723 Toppath Road Syracuse, NY 13214 315-446-9120 |



- LEGEND:**
- B-001-(194.2W)** ■ PROPOSED 25-FT. DEEP TEST BORING LOCATION
 - B-002-(194.1W)** △ PROPOSED 10-FT. DEEP TEST BORING LOCATION
 - SHORELINE STABILITY TEST BORING LOCATION
 - POTENTIAL FINAL CANDIDATE SITE (FCS) AREA TEST BORING LOCATION
 - SPUDDING/SHEETING/DREDGE PRISM STABILITY TEST BORING LOCATION
 - SEDIMENT SAMPLING AND ANALYSIS PROGRAM SAMPLE LOCATION AND PROBED DEPTH (INCHES)
 - SHORELINE
 - EXISTING FEATURE
 - 194.1 APPROXIMATE RIVER MILE

- NOTES:**
- BASEMAP PHOTOGRAMMETRY, INCLUDING SHORELINE AND UPLAND FEATURES, IS BASED ON AERIAL MAPPING PERFORMED BY CHAS. H. SELLS, INC. IN THE SPRING OF 2002. HORIZONTAL DATUM: NAD 1983 NY EAST ZONE; VERTICAL DATUM: NAVD 1988.
 - "SEDIMENT SAMPLING AND ANALYSIS PROGRAM SAMPLE LOCATIONS AND PROBED DEPTHS" PROVIDED BY ESI ON JUNE 17, 2003.
 - ALL LOCATIONS ARE APPROXIMATE.
 - APPROXIMATE RIVER MILE MARKERS WERE PROVIDED BY QEA ON A CD ENTITLED "2002 SIDE SCAN SONAR DATA 2001 BATHYMETRIC DATA JUNE 2003". RIVER MILE MARKERS SHOWN IN PARENTHESIS WERE APPROXIMATED BY BBL.
 - RIVER BOTTOM CONTOURS ARE 1 FOOT INTERVALS. UPLAND CONTOURS ARE 5 FOOT INTERVALS.
 - RIVER BOTTOM CONTOUR SOURCE: OCEAN SURVEYS, SPRING 2002.

X: HUDSONRIVER01;
05511X01,05511X02,05511X06,
ALLCON1, RIVCON.DWG
L: ON=*; OFF=*REF*;*TREE-CONF,*WOODLINE,*HEDGE
P: PAGESET/PLT-DL
9/17/03 SYR-85-RLP GMS RLP
N/20428002/PBORE01/20428B04.DWG



| No. | Date | Revisions | Init |
|-----|------|-----------|------|
| | | | |

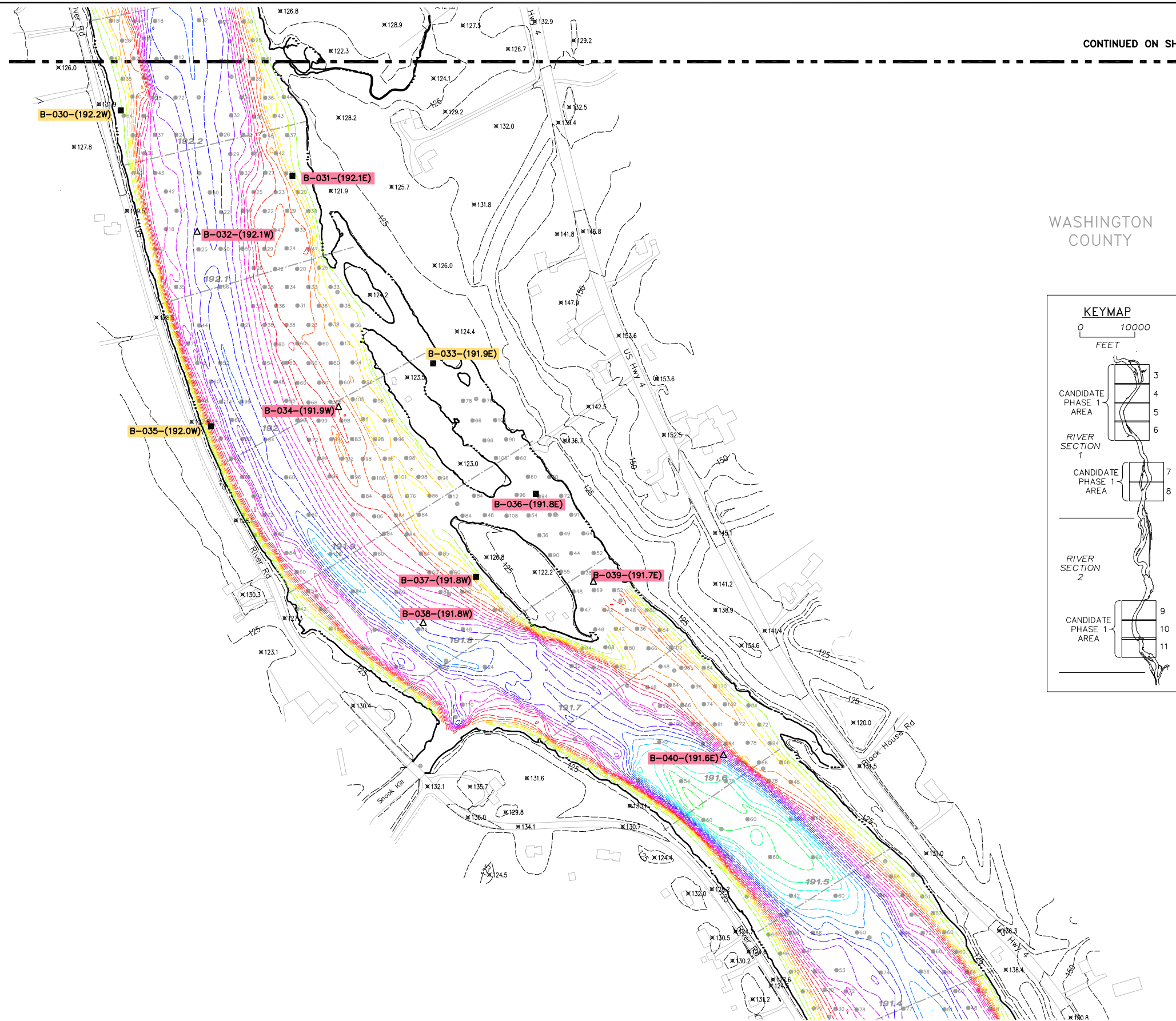
| | |
|------------------------------|-------------|
| Professional Engineer's Name | |
| Professional Engineer's No. | |
| State | Date Signed |
| Project Mgr. | Designed by |
| | Drawn by |

GENERAL ELECTRIC COMPANY • HUDSON RIVER PCBs SUPERFUND SITE
HUDSON RIVER REMEDIAL DESIGN - YEAR 2 SUPPLEMENTAL ENGINEERING DATA COLLECTION
PROPOSED BORING LOCATIONS
(RIVER MILE 193.0 TO 192.3 -
CANDIDATE PHASE 1 AREA)

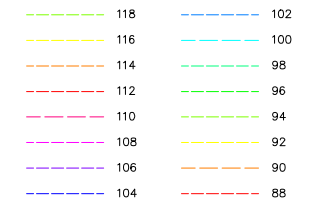
| |
|--|
| BBL Project No. 20428.002 |
| Date SEPTEMBER 2003 |
| Blasland, Bouck & Lee, Inc. Corporate Headquarters 6723 Toppath Road Syracuse, NY 13214 315-446-9120 |

SARATOGA COUNTY

WASHINGTON COUNTY



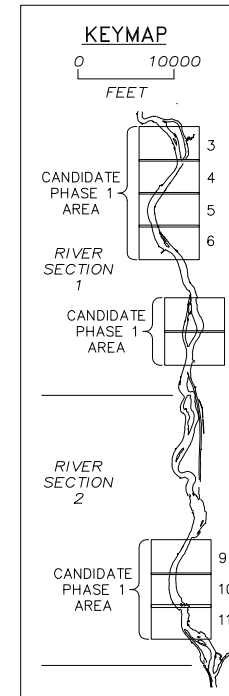
RIVER BOTTOM CONTOURS:
(1 FT. INTERVAL, 2 FT. LISTED BELOW)



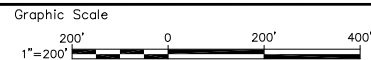
UPLAND CONTOURS:
----- INDEX (25 FT. INTERVAL)
----- INTERMEDIATE (5 FT. INTERVAL)

- LEGEND:**
- B-001-(194.2W)** ■ PROPOSED 25-FT. DEEP TEST BORING LOCATION
 - B-002-(194.1W)** △ PROPOSED 10-FT. DEEP TEST BORING LOCATION
 - SHORELINE STABILITY TEST BORING LOCATION
 - POTENTIAL FINAL CANDIDATE SITE (FCS) AREA TEST BORING LOCATION
 - SPUDDING/SHEETING/DREDGE PRISM STABILITY TEST BORING LOCATION
 - SEDIMENT SAMPLING AND ANALYSIS PROGRAM SAMPLE LOCATION AND PROBING DEPTH (INCHES)
 - SHORELINE
 - EXISTING FEATURE
 - 194.1 APPROXIMATE RIVER MILE

- NOTES:**
1. BASEMAP PHOTOGRAMMETRY, INCLUDING SHORELINE AND UPLAND FEATURES, IS BASED ON AERIAL MAPPING PERFORMED BY CHAS H. SELLS, INC. IN THE SPRING OF 2002. HORIZONTAL DATUM: NAD 1983 NY EAST ZONE; VERTICAL DATUM: NAVD 1988.
 2. "SEDIMENT SAMPLING AND ANALYSIS PROGRAM SAMPLE LOCATIONS AND PROBING DEPTHS" PROVIDED BY ESI ON JUNE 17, 2003.
 3. ALL LOCATIONS ARE APPROXIMATE.
 4. APPROXIMATE RIVER MILE MARKERS WERE PROVIDED BY QEA ON A CD ENTITLED "2002 SIDE SCAN SONAR DATA 2001 BATHYMETRIC DATA JUNE 2003". RIVER MILE MARKERS SHOWN IN PARENTHESES WERE APPROXIMATED BY BBL.
 5. RIVER BOTTOM CONTOURS ARE 1 FOOT INTERVALS. UPLAND CONTOURS ARE 5 FOOT INTERVALS.
 6. RIVER BOTTOM CONTOUR SOURCE: OCEAN SURVEYS, SPRING 2002.



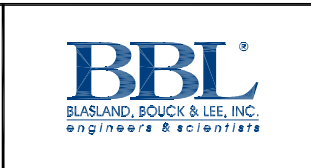
X: HUDSONRIVER01;
05511X01,05511X02,05511X06,
ALLCON1, RIVCON.DWG
L: ON=*; OFF=*REF*;*TREE--CONIF,*WOODLINE,*HEDGE
P: PAGESET/PLT-DL
9/17/03 SYR-85-RLP GMS RLP
N/20428002/PBORE01/20428B04.DWG



THIS DRAWING WAS PREPARED AT THE SCALE INDICATED IN THE TITLE BLOCK. INACCURACIES IN THE STATED SCALE MAY BE INTRODUCED WHEN DRAWINGS ARE REPRODUCED BY ANY MEANS. USE THE GRAPHIC SCALE BAR IN THE TITLE BLOCK TO DETERMINE THE ACTUAL SCALE OF THIS DRAWING.

| No. | Date | Revisions | Init |
|-----|------|-----------|------|
| | | | |

| | |
|------------------------------|-------------|
| Professional Engineer's Name | |
| Professional Engineer's No. | |
| State | Date Signed |
| Project Mgr. | Designed by |
| | Drawn by |



GENERAL ELECTRIC COMPANY • HUDSON RIVER PCBs SUPERFUND SITE
HUDSON RIVER REMEDIAL DESIGN - YEAR 2 SUPPLEMENTAL ENGINEERING DATA COLLECTION
PROPOSED BORING LOCATIONS
(RIVER MILE 192.3 TO 191.4 -
CANDIDATE PHASE 1 AREA)

| |
|--|
| BBL Project No. 20428.002 |
| Date SEPTEMBER 2003 |
| Blasland, Bouck & Lee, Inc. Corporate Headquarters 6723 Toppath Road Syracuse, NY 13214 315-446-9120 |