



# Implementing a National Preparedness and Response Mapping Application

Freshwater Spills Symposium 2004  
New Orleans, Louisiana

# GLC

---

- Binational agency representing states/provinces
- Formed 1955 under state/federal law
- Promotes informed use, management and protection of the water and related natural resources
- Issues: Resource Management, Environmental Protection, Transportation and Sustainable Economic Development
- Functions: Information Sharing, Policy R&D, and Advocacy
- “Information and research broker” focusing on hydrologic, not geo-political boundaries

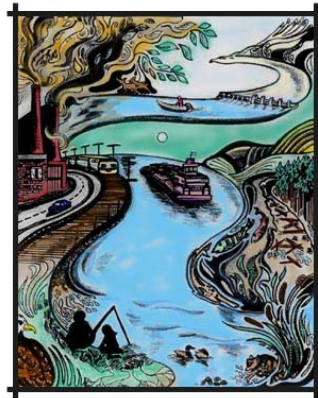
# Altruism

---

Great Lakes Spill Protection Initiative



Inland Sensitivity Atlas



Freshwater Spills Information Clearinghouse



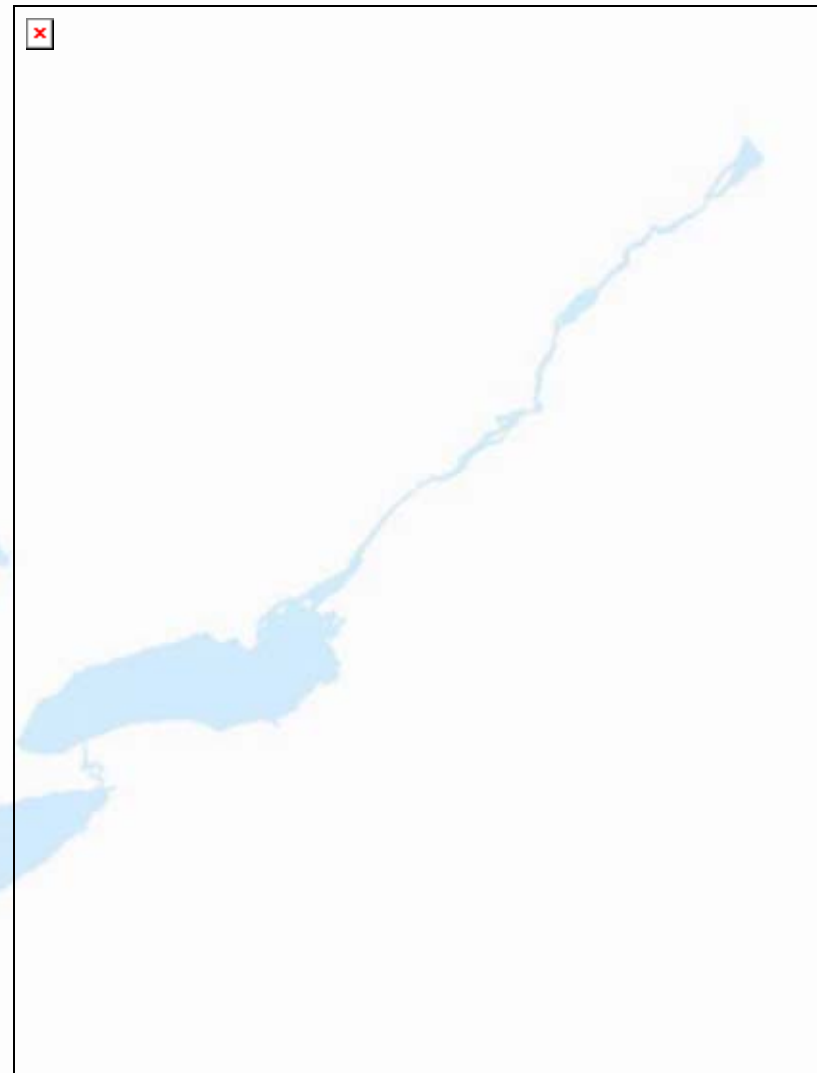
# Inland Sensitivity Atlas

Standardized  
symbology and  
definitions.



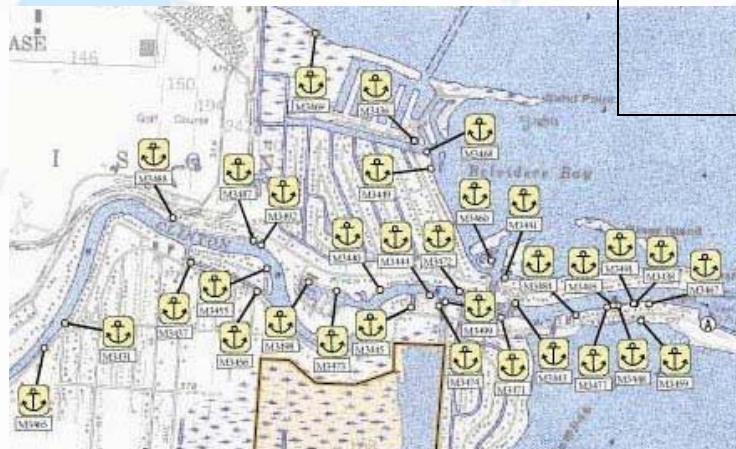
# Inland Sensitivity Atlas

Detailed data sets  
tied to each mapped  
feature.



# Inland Sensitivity Atlas

Maps are just the plain and simple way to present complex data sets in space and time.



# Need

---

What do we need to answer at a response?

- Location of the incident
- Potential human/environmental receptors
- Our ability to execute an effective response



**Mapping  
Application for  
Planning,  
Preparedness and  
Emergency  
Response**



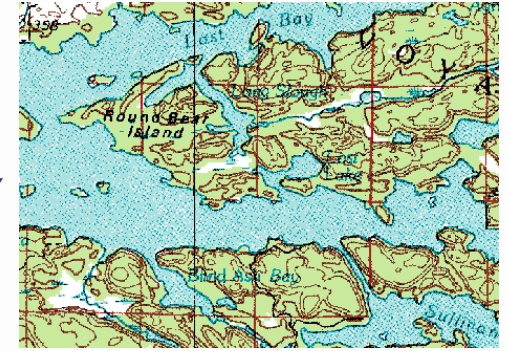
# MAPPER

---

- Minimum essential data elements
- Universal data accuracy
- Standardized format
- Common national data structure
- FGDC-compliant

# MAPPER

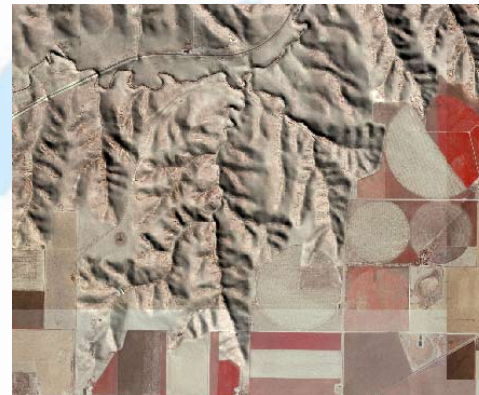
- USGS Topographic Maps



- Aerial Photography



- Raised Relief Maps





# MAPPER

MAPPING APPLICATION FOR PREPAREDNESS, PLANNING AND EMERGENCY RESPONSE

TOPOGRAPHIC VIEW

AERIAL PHOTO VIEW

RELIEF MAP VIEW



LOCATE AREA OF INTEREST BY CLICKING ON A STATE ABOVE  
OR  
PERFORM A USER-DEFINED SEARCH BY LOCATION

CITY		LATITUDE
<input type="text"/>		<input type="text"/>
STATE	ZIP CODE	LONGITUDE
<input type="text"/>	<input type="text"/>	<input type="text"/>
<input type="button" value="Get Map"/>		

# MAPPER

MAPPING APPLICATION FOR PREPAREDNESS, PLANNING AND EMERGENCY RESPONSE

**TOPOGRAPHIC VIEW**   **AERIAL PHOTO VIEW**   **RELIEF MAP VIEW**

**LEGEND**

**ZOOM** (+)   **ZOOM** (-)

**PAN** (Hand icon)

**ID** (Info icon)

**DRAW**

**BUFFER**

**TABLE**

**PRINT**

**FSIC**  
ADDITIONAL ONLINE  
RESOURCES

**NATIONAL WEATHER SERVICE**  
Local forecast by  
"City, St" or zip code  
City, St     

**LOCATE RELEVANT  
AREA CONTINGENCY  
PLANS**







# MAPPER

---

- Geographic perspective in planning and response
- Unified data presentation
- National data commonality
- “One-stop shopping”
- Remote data accessibility
- Design for non-GIS response audience



# MAPPER

---



 Great Lakes  
Commission  
des Grands Lacs

Eisenhower Corporate Park  
2805 S. Industrial Hwy., Suite 100  
Ann Arbor, MI 48104-6791  
[www.glc.org](http://www.glc.org)

**Thomas Rayburn**  
Senior Project Manager  
Environmental Quality  
734-971-9135, ext. #105  
734-971-9150 (fax)  
[tray@glc.org](mailto:tray@glc.org)

*Ensuring environmental and economic prosperity for the Great Lakes-St. Lawrence region*