



Getting Started: ACRES Training for New Grantees




*Online Training
May 26, 2011*

Objectives

- ◆ Define the purpose of ACRES
- ◆ Identify the ways EPA uses ACRES data – and how you can too
- ◆ Learn how and when to submit data in ACRES
- ◆ Demonstrate using ACRES for data entry
- ◆ Learn what resources are available if you have questions

 **Question and Answer
period at the end** 

 5/31/2011 2

ACRES – What's the Purpose?



Atlanta Youth Soccer Association; Cleanup; 2004



Southern Maine RPC; RLF; 2007



5/31/2011

3

What Data Are Collected?

◆ ACRES is based on the hard-copy Property Profile Form (PPF) and Job Training Reporting Form (JTR)

- Assessment, cleanup, and redevelopment activities and funding
- Contaminants found and media affected
- Property history and ownership information

◆ The Multiple Property Spreadsheet facilitates reporting on ten or more properties at one time

- Useful for reporting community-wide assessment activities

◆ Available at:

<http://www.epa.gov/brownfields/pubs/index.html>



5/31/2011

4

How Can I Use the Data in ACRES?

- ◆ **Manage information about your brownfields projects**
- ◆ **Build your case locally**
 - Show revenue-generating activity – leveraged funds and increased tax base
 - Build a case for maintaining and increasing public investment in brownfields
- ◆ **Write subsequent proposals**
 - Programmatic Capabilities, Outputs and Outcomes, Leveraging
 - All funders, including EPA, like to see measurable results
- ◆ **Search for and identify other Brownfields projects in your area**

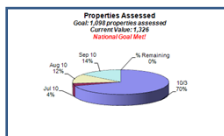


5/31/2011

5

How Does EPA Use the Data in ACRES?

- ◆ **ACRES is the Brownfields Program system of record**
- ◆ **Programmatic data are primarily used to:**
 - Analyze data across CAs to demonstrate and improve the success of the Brownfields Program
 - Respond to Congressional inquiries, FOIA requests, ad hoc analysis requests, and budget-related queries
 - Track and report Program goals and accomplishments
 - Create communication and outreach materials



Brownfields Program
Analysis – Sept 2010

Brownfields At A
Glance – July 2010



5/31/2011

6

Are My Data Publicly Available? Yes!

◆ Cooperative Agreement Information

- Brownfields Grant Fact Sheet Search Tool
 - http://cfpub.epa.gov/bf_factsheets/index.cfm

◆ Property Data

- Cleanups in My Community (CIMC)
 - <http://www.epa.gov/cimc>

◆ Brownfields Program data are highly visible – therefore data quality is very important



CIMC – April 2011

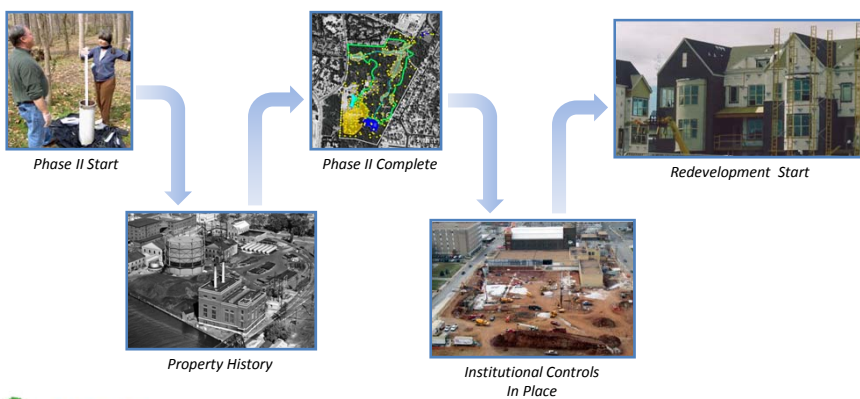


5/31/2011

7

When Do I Submit Data in ACRES?

◆ Data should be updated in ACRES as soon as there is new activity to report

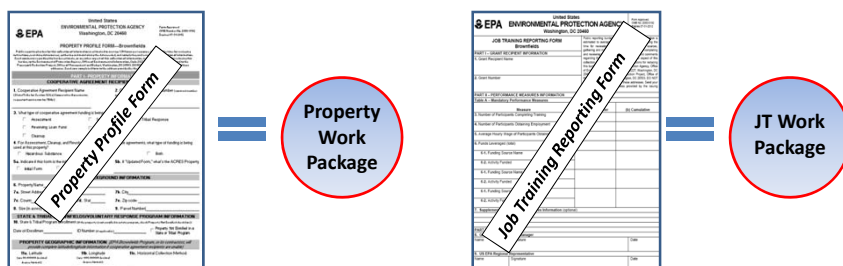


5/31/2011

8

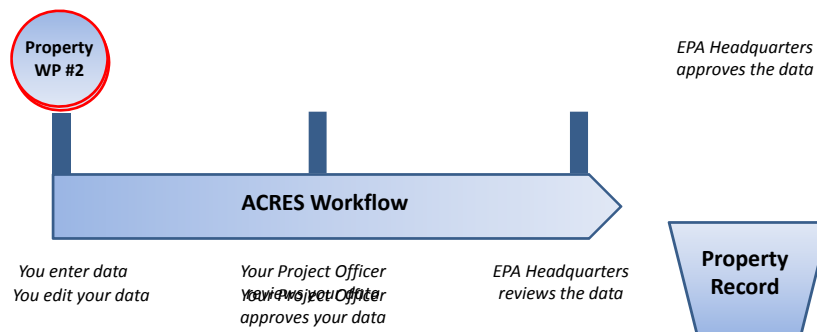
What is a Work Package?

- ◆ Any set of related data that need to be entered, edited, and approved together
- ◆ For example, all the data otherwise written on the hard-copy PPF or JTR constitute a single work package



What is the ACRES Workflow?

- ◆ The series of actions and states that a work package must pass through before being completed
- ◆ The status of a work package indicates where it is in the workflow



What Do These Terms Mean?

◆ Property Record

- Permanent record in ACRES containing all property data in a format based on the hard-copy Property Profile Form
- Updated when a property work package is approved

◆ Property Work Package

- Temporary file that no longer exists after being approved in the workflow
- The means to update a property record
- Electronic version of the hard-copy Property Profile Form

◆ Property Profile Form

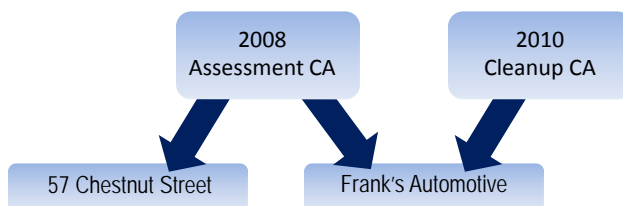
- Hard-copy form filled out manually and submitted to EPA
- Basis for ACRES property data entry screens



5/31/2011 11

How Are Data Organized?

- ◆ Each signed Cooperative Agreement is one record in ACRES
- ◆ A single property record may be associated with more than one grant



5/31/2011 12

Do I Need to Register? Yes!

- ◆ Register with EPA's Central Data Exchange (CDX)
 - Located at <https://cdx.epa.gov>
- ◆ You will need your eight-digit CA number and state abbreviation

~~28~~ 12345678 ~~01~~



Where Do I Access ACRES? CDX!

- ◆ After registration, ACRES is accessed through the same URL for CDX: <https://cdx.epa.gov>



ACRES Demonstration

Welcome ACRES Training CAR
Version 4.00.030
October 1999
05/26/2010
Logout

HOME FIND PROPERTY My Preferences | Contact Us

Quick Links

- Update My Email Preferences
- Submitting Data for More Than Ten Properties?
Download the Multi-Property Spreadsheet

News, Alerts & Notifications

Not sure where to start?
Learn how to enter project data
Learn how to enter job training data

New to ACRES
ACRES has been redesigned! See some of the new features designed based on your feedback to make ACRES easier and more useful. Visit www.epa.gov/acres for more information.

Training Schedule
Join us for an online training, view the [training schedule](#).

Not sure what a "Cooperative Agreement" is? Used to seeing "Grants"
[Learn the difference](#)

My Cooperative Agreements My Projects

You are associated with the following Cooperative Agreements. Click a Cooperative Agreement name to start data entry for a project under that Cooperative Agreement.

Columbia River Estuary Study Taskforce
View 8 associated properties
State: OR Cooperative Agreement Type: BCRLF Cooperative Agreement #: BF 2222222 Announcement Year: FY03

Fairbanks North Star Borough
View 3 associated properties
State: AK Cooperative Agreement Type: Assessment Cooperative Agreement #: BF 87654321 Announcement Year: FY04

Oregon Tradesmen, Inc.
View Job Training Performance Measures
State: OR Cooperative Agreement Type: Job Training Cooperative Agreement #: JT 55555555 Announcement Year: FY07

Portland, City of (Oregon)
View 1 associated properties
State: OR Cooperative Agreement Type: Cleanup Cooperative Agreement #: BF 77777777 Announcement Year: FY08

[Add a Cooperative Agreement to My List](#)



5/31/2011 15

What if I Have Questions?

◆ ACRES Help Desk

- acres_help@epa.gov or 703-284-8212

◆ Central Data Exchange (CDX) Help Desk

- helpdesk@epacdx.net or 888-890-1995

◆ ACRES Information Web Page: <http://www.epa.gov/acres>

- Quick Reference Guides (updated and new!!)
- Frequently Asked Questions
- Training Materials
- Release Notes

◆ Brownfields Photo Archive

- bf_photos@sra.com



5/31/2011 16

What Did You Learn?

- ◆ What is the purpose of ACRES?
- ◆ How can you use ACRES in achieving your brownfields goals?
- ◆ When should you submit data in ACRES?
- ◆ What is a work package?
- ◆ How many times can you submit a work package for a single property record?
- ◆ Where do you go with questions??



5/31/2011 17

Questions?



Columbia, MO - Cleanup



Providence, RI - Job Training



Anaheim, CA - RLF



South Bend, IN - RLF



Brewer, ME - Assessment



5/31/2011 18