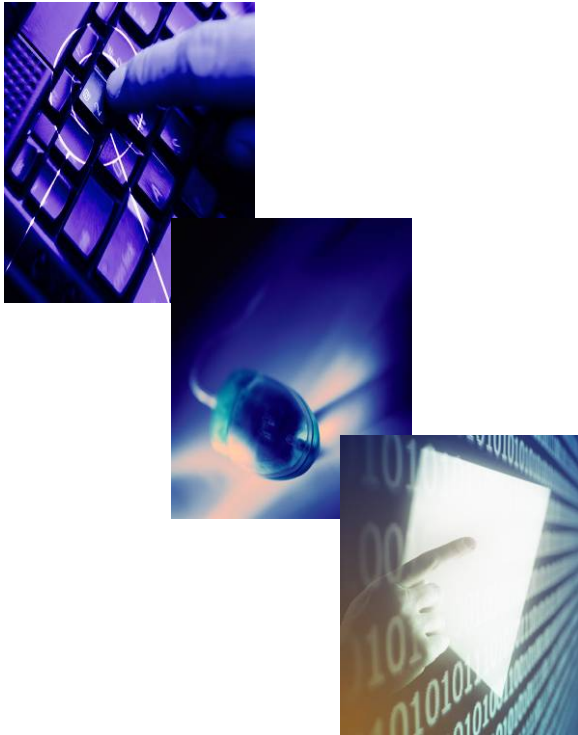


## *“Secure Data Transfer”*



## *“Fewer Errors”*

## *“Advanced Technology”*



For more Information:

Charles Freeman, Acting Chief  
Information Exchange Technology Branch  
(202) 566-1694  
freeman.charles@epa.gov

CDX/Exchange Network Help Desk  
1-888-890-1995

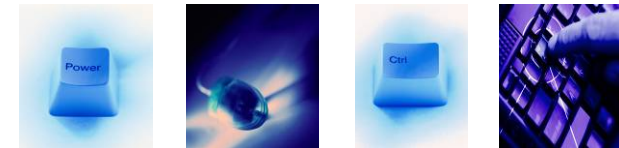
[www.epa.gov/cdx](http://www.epa.gov/cdx)  
[www.epa.gov/webservices](http://www.epa.gov/webservices)  
[www.epa.gov/exchangenetwork](http://www.epa.gov/exchangenetwork)



Publication Number #250-F-05-002  
November 2006

# CDX

CENTRAL DATA  
EXCHANGE



Supporting environmental data  
exchange among EPA, state and local  
governments, tribes, and the private  
sector over the Environmental  
Information Exchange Network

[www.epa.gov/cdx](http://www.epa.gov/cdx)

Environmental Information  
**exchange**  
Network

## ***EPA's Central Data Exchange (CDX) – Providing value-added services for national, regional and state data exchanges over the Internet***

CDX is EPA's gateway for receiving environmental information through the web and also serves as the as the EPA node on the Environmental Information Exchange Network. Today, CDX successfully manages thousands of data submissions from states, tribes, territories, local municipalities and industry through a Service-Oriented Architecture.

### **CDX Core Services**

- **Security and Identity Management**
  - \* Identity proofing
  - \* Virus scanning
  - \* Procedures for account revocation
  - \* Registration and authentication processes
  - \* Encryption support services
- **Data Transmission**
  - \* Data delivery to EPA national systems
  - \* Development and hosting of web forms and file upload functions for data submission
  - \* Notification updates and reports on submission status
  - \* Data transformation
  - \* Data archival
- **Exchange Network Support**
  - \* Registration
  - \* Security and quality assurance
  - \* Development of node to node data exchanges
  - \* Web service specifications and code
  - \* Data transformation
  - \* Data discovery service
- **Cross-Media Electronic Reporting Rule (CROMERR) Compliance**
  - \* Provide services compliant with CROMERR for electronic data collection
- **User Support**
  - \* Help Desk for CDX general support
  - \* Dedicated flow support available

### **CDX at a Glance (FY'06)**

- Over 63,000 CDX Users
- 31 data flows in production
- 14 data flows in development
- Over 88,000 file submissions

### **Next Generation CDX Innovations**

- **Registration Maintenance**
  - \* Allows program offices control over registration
  - \* Reduces money spent on help desk costs
- **Business Process Execution Language (BPEL)**
  - \* Provides an Open standard, object-oriented flow development process
  - \* Eliminates the hard coding of components together
- **Generic File Upload Process**
  - \* Provides a master flow with a suite of options for building web flows.
  - \* Meets unique program requirements
  - \* Utilizes extended reusable component methodology
- **CBI Solutions**
  - \* Provides programs restricted to paper submissions with an electronic reporting option
- **Acrobat® Forms**
  - \* Provides basic form functions that support the capture and later extraction of data via CDX
  - \* Provides a flexible development tool for program offices
  - \* May eliminate additional ICR requirements



### **CDX Data Flows**

- Air Quality System (AQS)
- Assessment, Cleanup and Redevelopment Exchange System (ACRES)
- eBeaches
- Electronic Discharge Monitoring Reports (eDMR)
- EnviroFlash
- Environmental Appeals Board
- Electronic Inventory Update Reporting (eIUR)
- Facility Registration System (FRS)
- Institutional Controls Tracking System (ICTS)
- Integrated Grants Management System (IGMS)
- Certifications and Notifications of Lead-Based Paint Abatement Activities
- Long Term 2/Stage 2 Disinfection Byproducts (LT2)
- National Emissions Inventory (NEI)
- Ozone Depleting Substances (ODS-CBI)
- Office of Transportation Air Quality Fuels Reporting System (OTAQ)
- Permit Compliance System-Interim Data Exchange Format (PCS-IDEF)
- Radionuclide National Emissions Standards for Hazardous Pollutants (NESHAPS)
- Resource Conservation and Recovery Act Information System (RCRAInfo)
- Risk Management Plan Web Reporting Center (RMP\*Web RC)
- Safe Drinking Water Accession and Review System (SDWARS)
- Safe Drinking Water Information System (SDWIS)
- Substance Registry System (SRS)
- Stormwater Electronic Notice of Intent (eNOI)
- Toxics Release Inventory (TRI)
- Toxic Substances Control Act Health and Safety Data (TSCA HaSD)
- VERIFY
- Water Contamination Information Tool (WCIT)