



A GENERATION AHEAD,  
*today*

## Corpus Christi Cogeneration

Patrick Blanchard  
Director EHS  
Calpine Corporation

November 3, 2010



- Calpine Corporation Overview
- Corpus Christi Cogeneration
  - Facility Overview
  - Unique Project Features
- Market Drivers
- Q & A

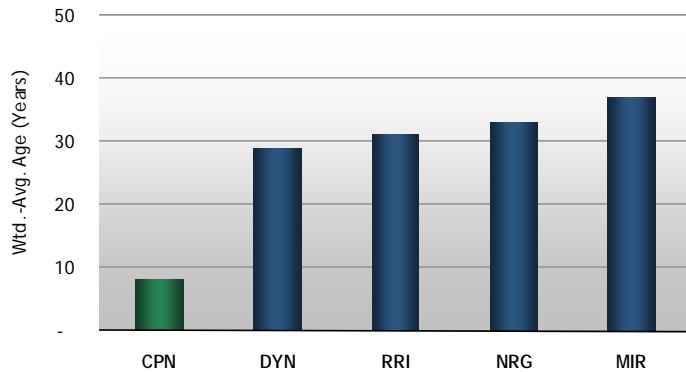
# Calpine Corporation Overview

# Unique Independent Power Producer



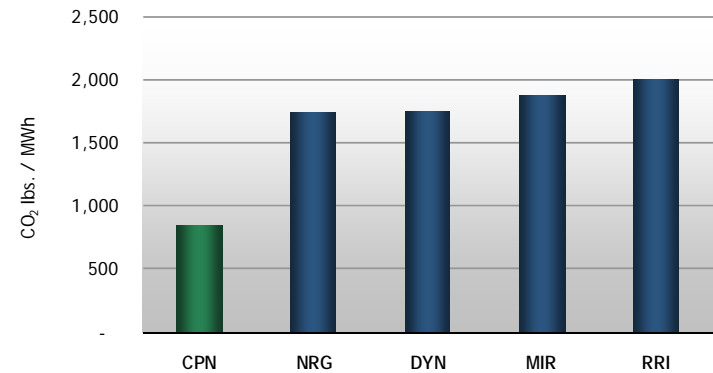
*Calpine is the nation's largest baseload renewable, natural gas and cogeneration power provider*

*Modern*



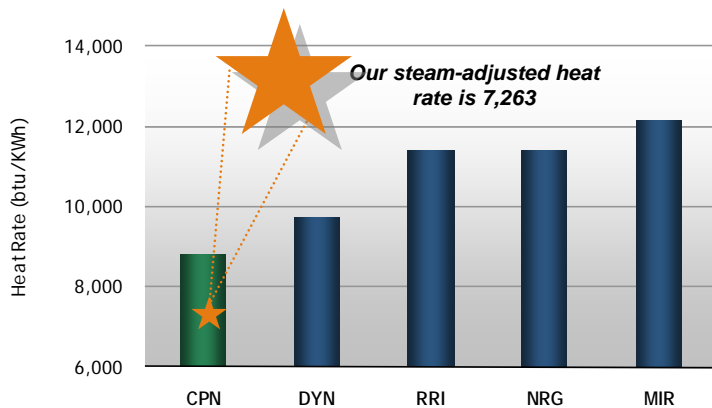
Source: Energy Velocity.

*Clean*



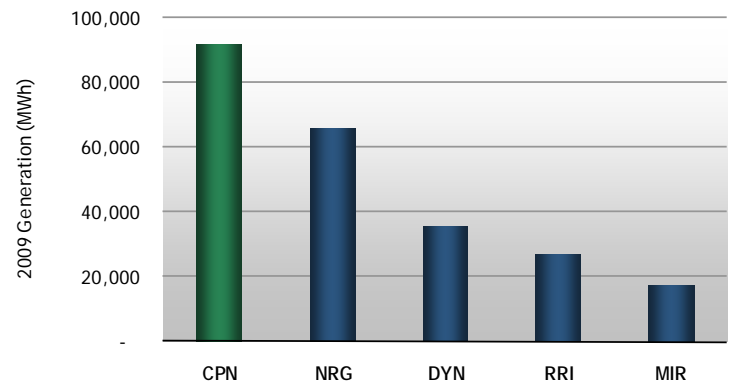
Source: Energy Velocity (2009).

*Efficient*



Source: Energy Velocity (2009). Not adjusted for steam, and excluding non-fossil fuel generation.

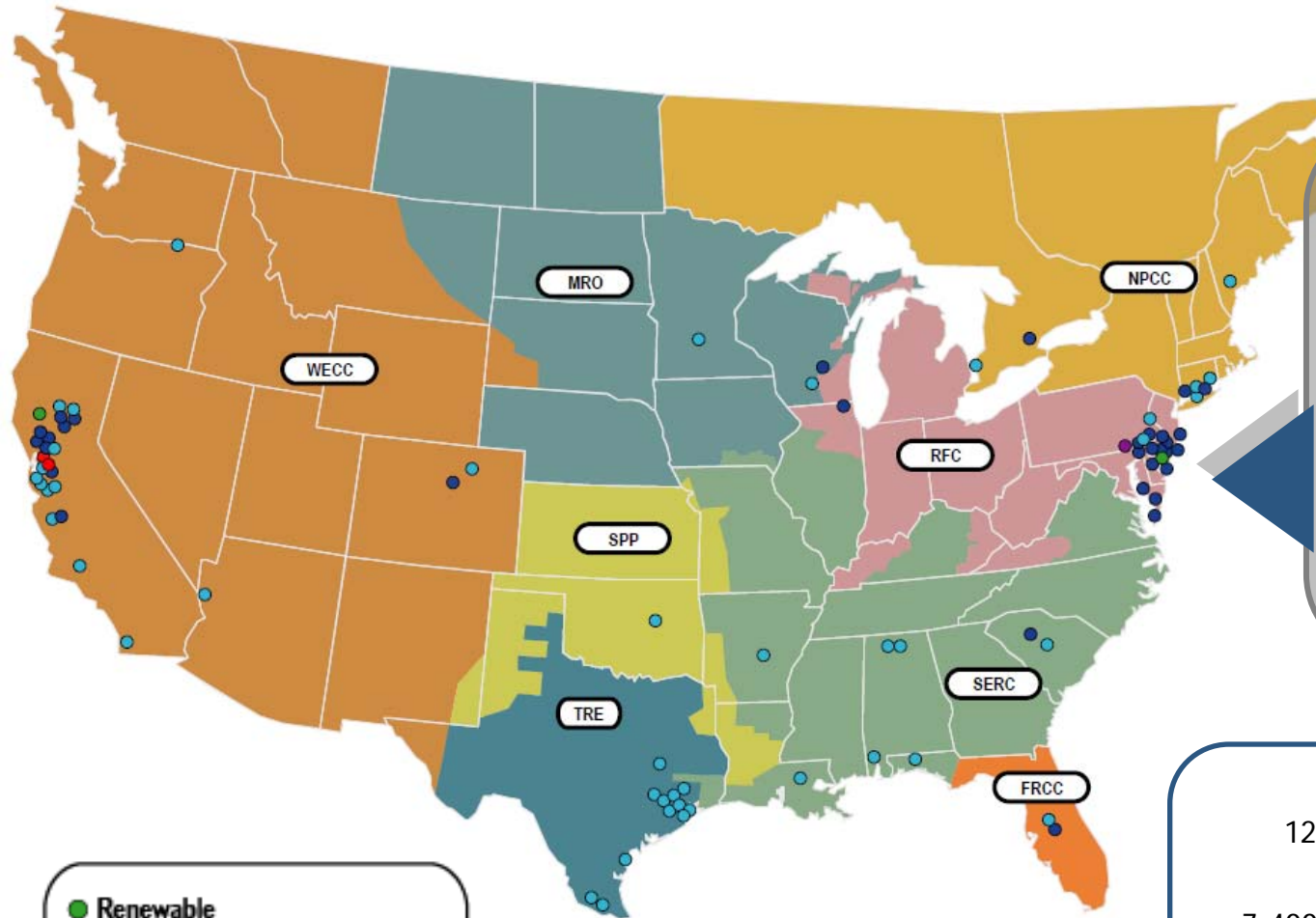
*Scale*



Source: 2009 SEC filings.

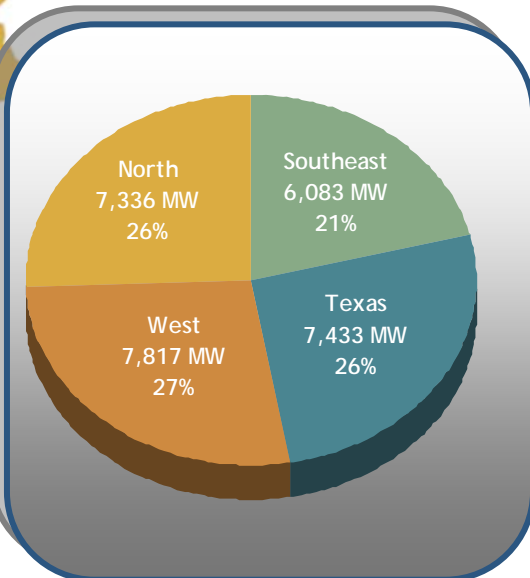
Note: Dynegy figures have been adjusted to remove estimated impacts of plants sold to LS Power during 2009.

# Calpine Portfolio Overview



- Renewable
- Combined Cycle
- Simple Cycle / Other
- Under Advanced Development
- Under Construction

## Geographic Diversity



### Texas Summary:

12	Combined-Cycle
	Natural Gas Plants
~7,400 MW	Capacity
~4,200 MW	Cogeneration
~3,200 MW	Merchant

As of July 2010

# Corpus Christi Cogeneration



# Corpus Christi Cogeneration Overview



- 500 MW combined cycle CT facility
- 2,000 KPPH steam capacity
- Direct electrical interconnection with industrial customer and grid
- Emissions Control: DLN combustion
- Two auxiliary boilers providing 500KPPH steam redundancy
- Commercial Operation Date: 2002





# Unique Project Features

- Footprint: compact nine-acre site
- Brownfield site
- Shared services from multiple hosts
- Saltwater cooling tower
- Large multi-fuel duct firing capacity
- Incremental peaking capability
- Provides steam to three adjacent industrial facilities



# Unique Project Features

## Elementis Chromium

Steam: 140 KPPH

Cooling water supply and discharge

## CITGO Refining

Electric: 60 MW

Steam: 750 KPPH

Ground Lease and fuel gas

## Flint Hills Resources

Steam: 400 KPPH

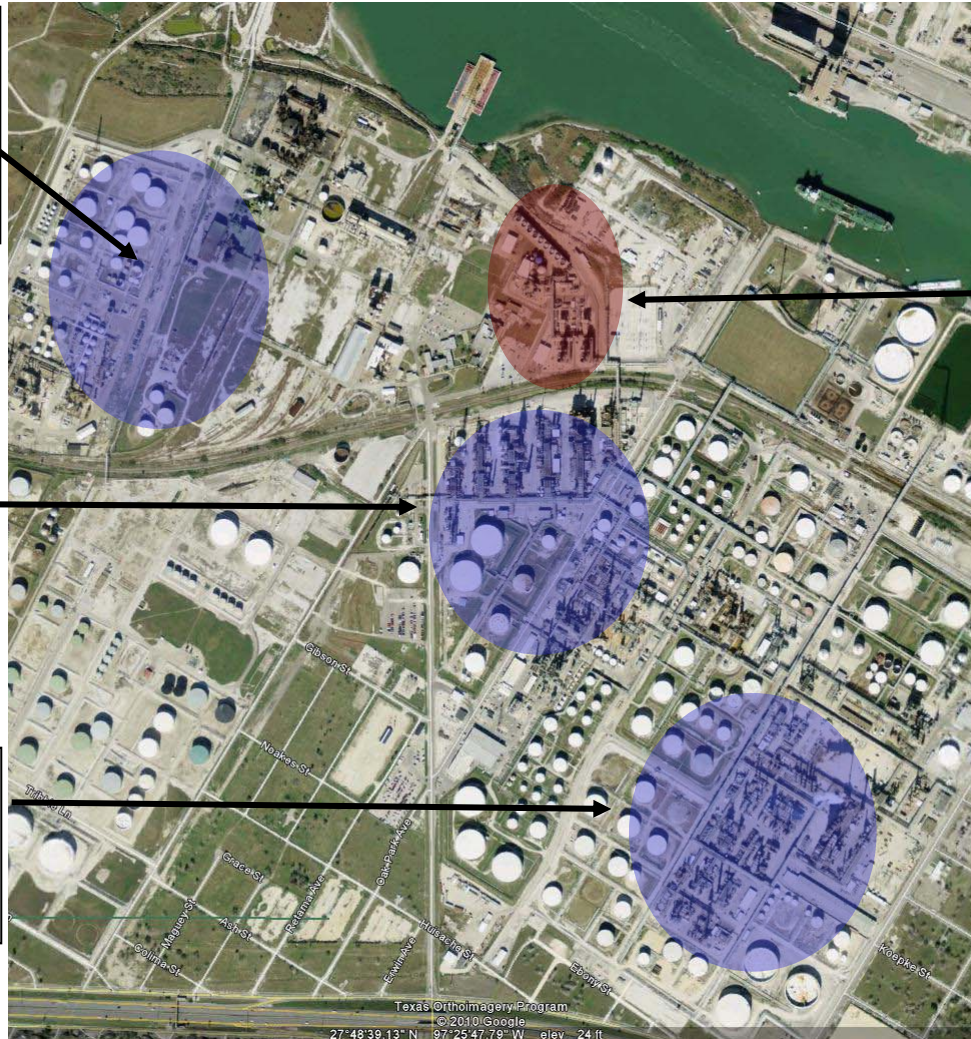
## Corpus Christi Cogeneration

*Electric: 500MW  
Steam: 2,000KPPH*

Fuels:

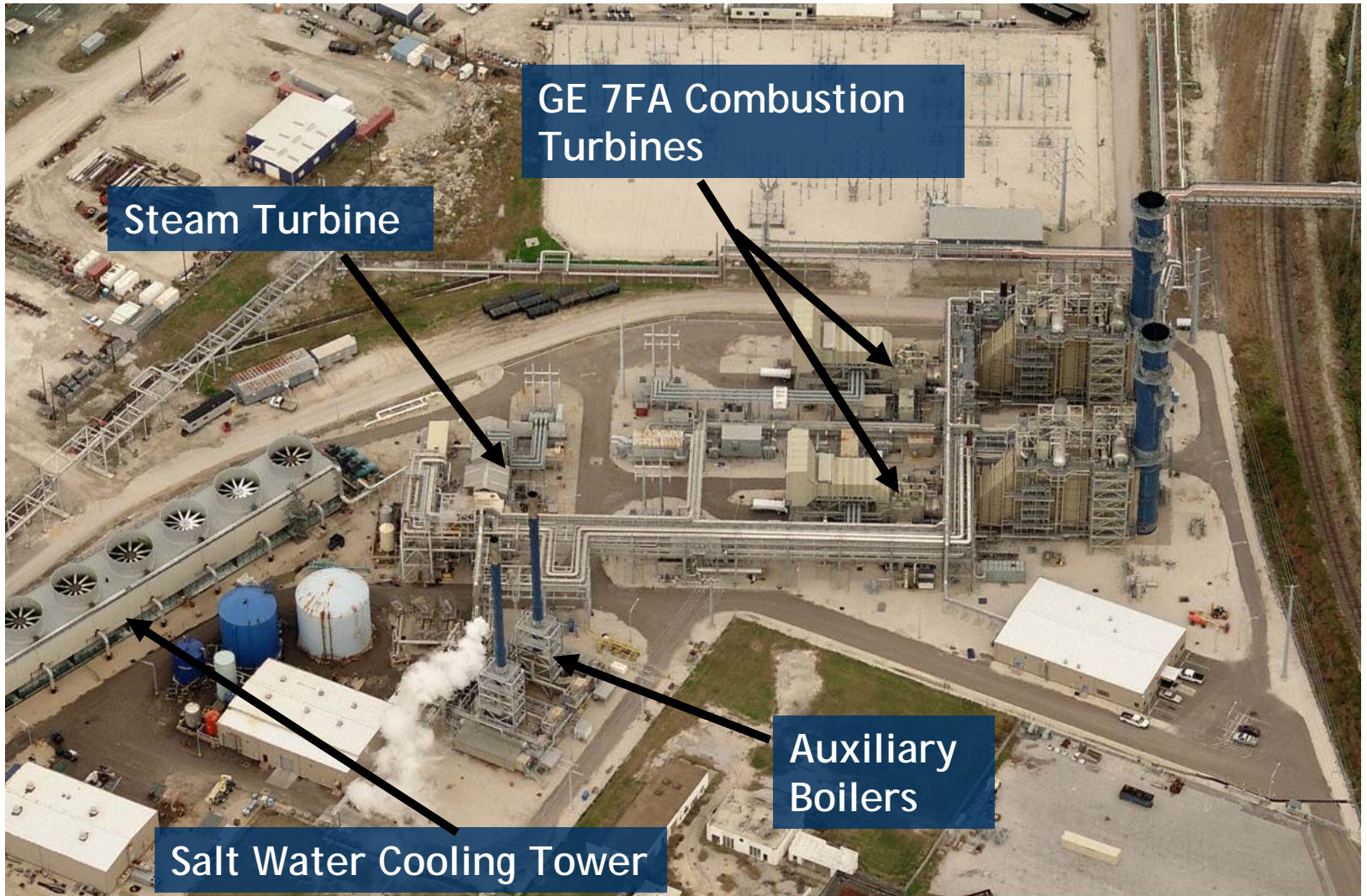
Natural gas

Refinery Off Gas



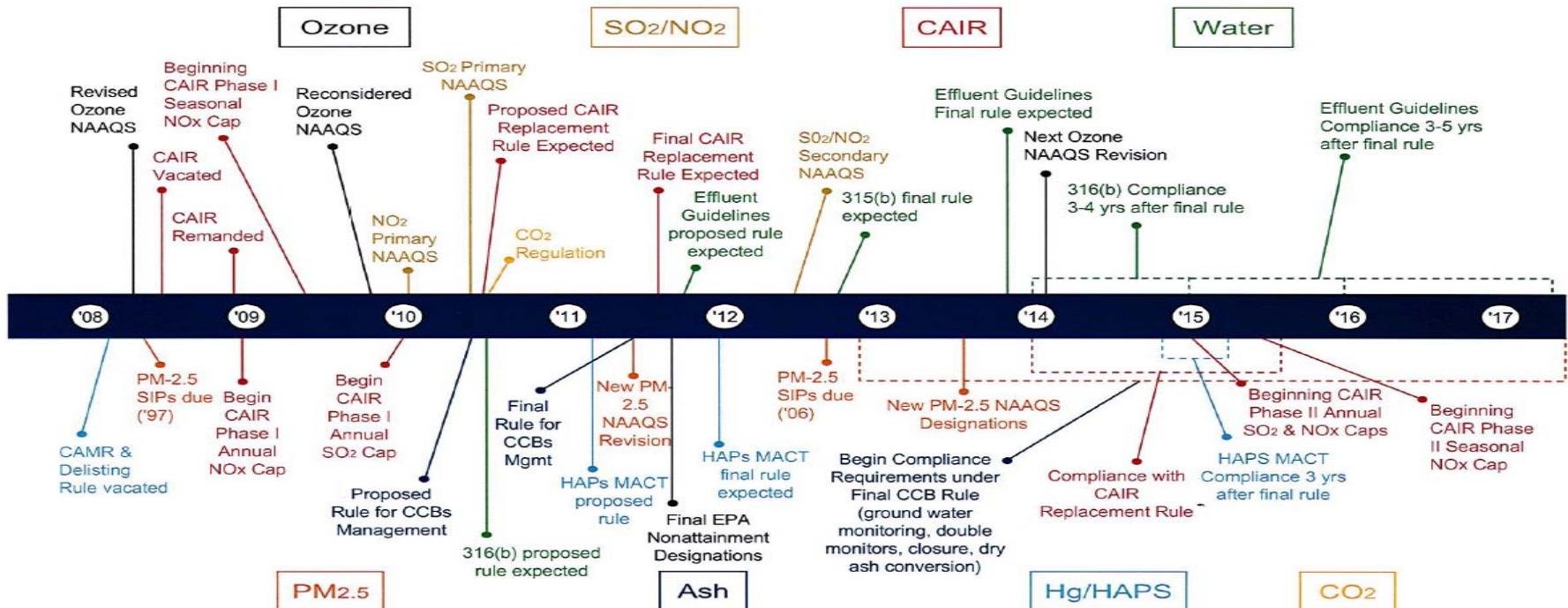
1/2 Mile

# Unique Project Features



# Market Drivers

## Mounting EPA Actions



## Growth of renewable generation

- Increase in hourly rate of change in net load
- Greater need for ancillary services
- Impacts to off peak electric pricing

## Nodal market transition (Texas)

## Natural gas price relative to coal

# Questions

