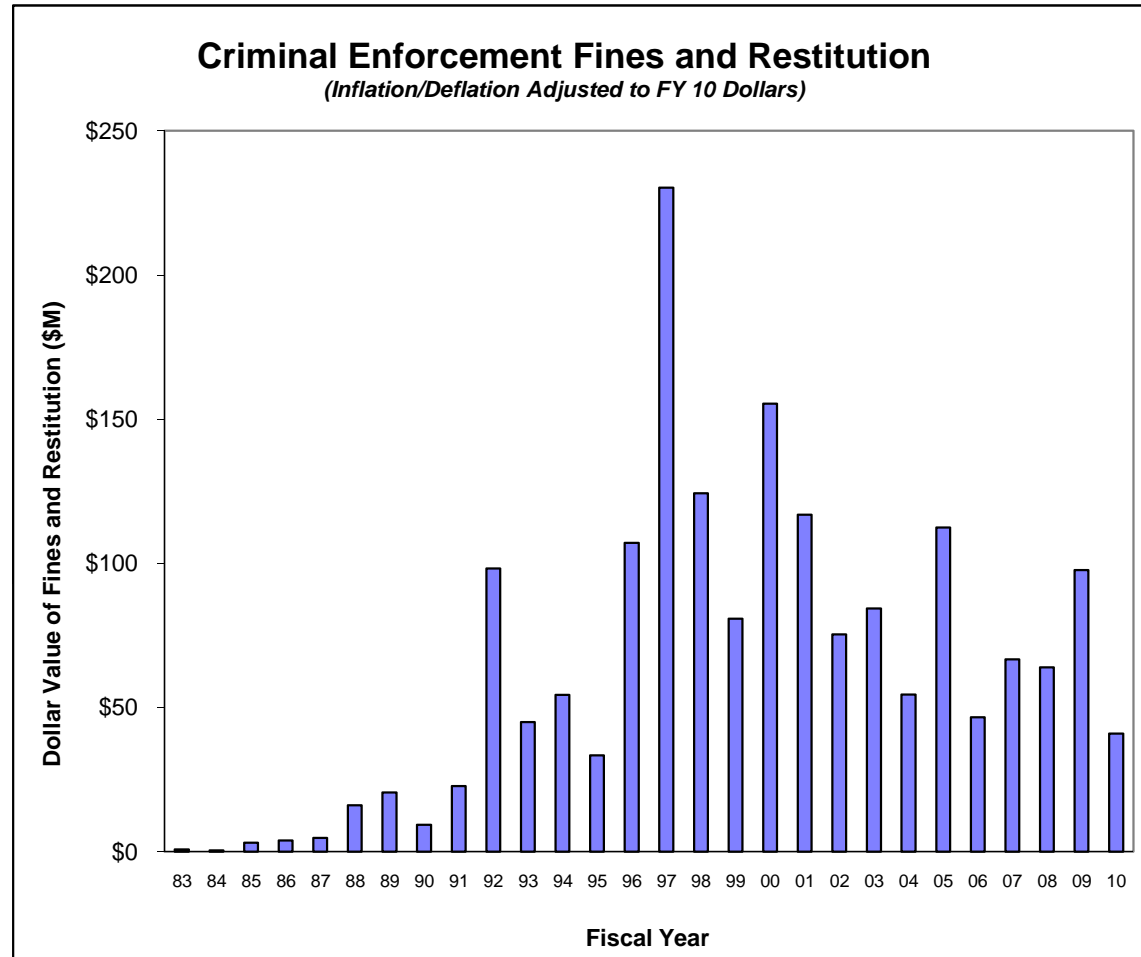




# National Enforcement Trends (NETs)

## FY 1983 - FY 2010 Criminal Enforcement Fines and Restitution (Inflation/Deflation Adjusted to FY 10 Dollars)

Criminal Enforcement Fines and Restitution (Inflation Adjusted to FY 10 Dollars)	
Fiscal Year	Fines and Restitution (\$Mil)
83	\$1
84	\$0.4
85	\$3
86	\$4
87	\$5
88	\$16
89	\$21
90	\$9
91	\$23
92	\$98
93	\$45
94	\$54
95	\$33
96	\$107
97	\$230
98	\$124
99	\$81
00	\$155
01	\$117
02	\$75
03	\$84
04	\$55
05	\$112
06	\$47
07	\$67
08	\$64
09	\$98
10	\$41





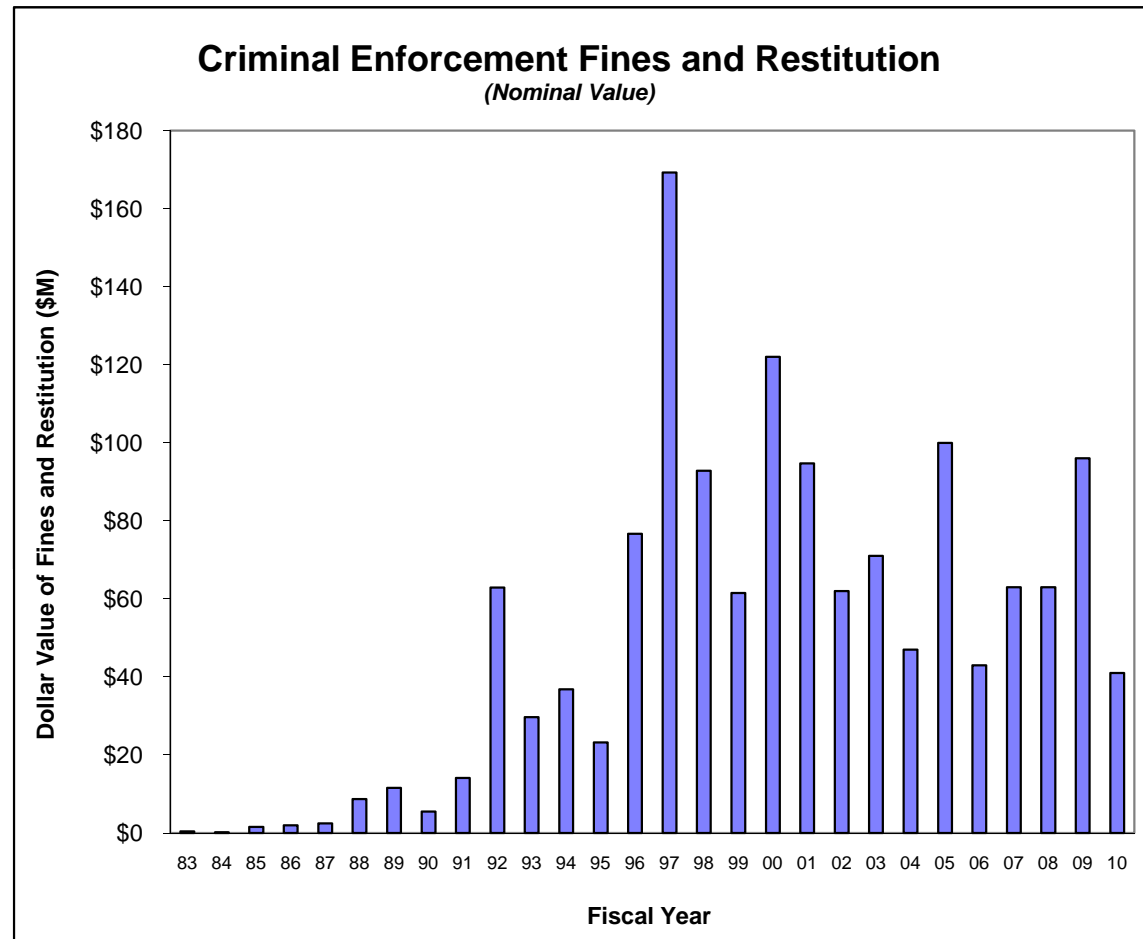
## National Enforcement Trends (NETs)

# FY 1983 - FY 2010

## Criminal Enforcement Fines and Restitution

(Nominal Value)

Criminal Enforcement Fines and Restitution (Nominal Value)	
Fiscal Year	Fines and Restitution (\$Mil)
83	\$0.4
84	\$0.2
85	\$2
86	\$2
87	\$2
88	\$9
89	\$12
90	\$6
91	\$14
92	\$63
93	\$30
94	\$37
95	\$23
96	\$77
97	\$169
98	\$93
99	\$62
00	\$122
01	\$95
02	\$62
03	\$71
04	\$47
05	\$100
06	\$43
07	\$63
08	\$63
09	\$96
10	\$41

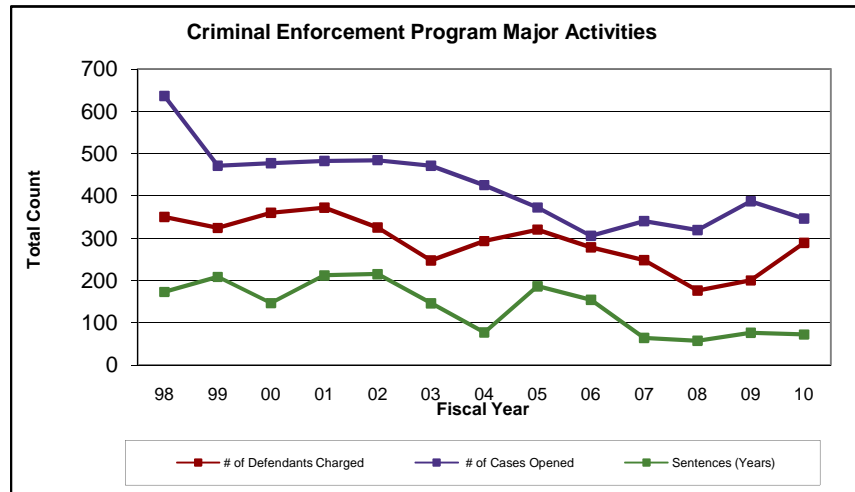




## National Enforcement Trends (NETs)

# FY 1998 - FY 2010 Criminal Enforcement Program Activities

Criminal Enforcement Program Major Activities			
Fiscal Year	# of Cases Opened	# of Defendants Charged	Sentences (Years)
98	636	350	173
99	471	324	208
00	477	360	146
01	482	372	212
02	484	325	215
03	471	247	146
04	425	293	77
05	372	320	186
06	305	278	154
07	340	248	64
08	319	176	57
09	387	200	76
10	346	289	72



## National Enforcement Trends (NETs) Metadata

NETs Page E-3, 3b, 3c: FY 1983 - FY 2010 Criminal Enforcement Program Activities

<b>Note 1</b>	Prior FY dollar figures on the first page of this document are adjusted to reflect the value in FY 2010 dollars based on the average fiscal year value of the U.S. Department of Labor Consumer Price Index for All Urban Consumers.
<b>Note 2</b>	Counter-terrorism investigation initiations are excluded from Criminal Enforcement Program statistics.
<b>Note 3</b>	In FY 05, the count of criminal referrals was terminated as an internal criminal enforcement program measure and therefore are no longer displayed here. Criminal referrals are no longer reported because they are not a good measure of the program. A criminal "referral" is a request for prosecutorial assistance during the course of the investigation to determine whether potential criminal violations have occurred. Therefore, unlike the civil program, they don't accurately represent the number of cases "referred" by Environmental Protection Agency (EPA) asking the Department of Justice (DOJ) to file criminal charges.
<b>Note 4</b>	Sentencing-related statistics fluctuate from year to year based on the specific nature and characteristics of the cases prosecuted. In addition, the aggregate results of incarceration in FY 2006 were impacted (and may be impacted in the future) by Supreme Court decisions making the Federal Sentencing Guidelines discretionary. In FY 2006, aggregate jail sentences were about 32 years less in FY 2006 compared to FY 2005 due to the downward variances in sentencing.
<b>Note 5</b>	Years of Incarceration are represented to the nearest whole year.
<b>Note 6</b>	The 248 defendants charged in FY 2007 is different than the number announced by EPA at the end of that FY because the announced end of FY number failed to include the defendants charged in several additional cases that concluded during FY 2007.