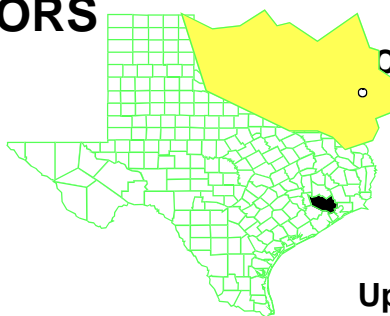


DIXIE OIL PROCESSORS SUPERFUND SITE

Harris County, Texas



**EPA REGION 6
CONGRESSIONAL DISTRICT 22**

**Contact:
Gary Miller, 214-665-8318**

**EPA ID# TXD089793046
Site ID: 0600006**

Updated: No scheduled updates

Background

The Dixie Oil Processors (DOP) is a former industrial site located approximately 20 miles southeast of Houston, Texas, in Harris County. The site occupies 26.6 acres and is positioned both north and south of Dixie Farm Road, designated as DOP North and DOP South. DOP North covers 19.0 acres, and DOP South covers 7.6 acres. Mud Gully, a flood control ditch and tributary of Clear Creek, runs along the eastern boundary of DOP North and the western boundary of DOP South. The Brio Refinery site (Brio) borders DOP to the northeast and a former athletic field borders DOP North to the Southwest. Due north of DOP North is the former Southbend residential subdivision. The Friendswood Oil Field borders the remaining areas. Residential development exists to the northeast across Beamer Road. A buffer of undeveloped properties exists to the north, west and south of the site. The property to the south has been used for the establishment of a wetland habitat and preservation of forest habitat as part of a Natural Resource Restoration Project in conjunction with several state and federal agencies. Residential development is 0.5 miles to the west of the site.



DOP North was operated as a copper recovery and hydrocarbon washing facility from 1969 through 1978. A total of six surface pits were used to store and treat wastewater containing copper prior to recovery and



discharge. The pits were closed and decommissioned during 1975 and 1977. Several operations occurred at DOP South from 1978 through 1986. These included hydrocarbon washing to produce various chemicals, oil recovery, and blending and distilling residues from local chemical plants and refineries to produce various petroleum products including fuel oil, creosote extender, and a molybdenum concentrate catalyst. Active operations at the site stopped in 1986. Approximately 6,000 cubic yards of contaminated soils were removed in 1984 and disposed off-site. There were 107,351 cubic yards of contaminated soils and sub-soils on the site associated with six different pits. Site contaminants included ethylbenzene, hexachlorobenzene, 1,1,2-

trichloroethane, methylene chloride, toluene, and chlorobenzene.

The EPA issued a Record of Decision (ROD) for the DOP site on March 31, 1988. The ROD selecting limited action and monitoring, including fluids stabilization and a site cover with institutional controls.

Current Status

The site is currently in an operations and maintenance phase. The Third Five Year Review was completed on September 9, 2008. The review found that the remedy at the site is currently protective of human health and the environment. A notice of a direct final deletion from the National Priorities List was published in June 2006. No comments were received and the list was deleted in August 2006.

The next Five-Year Review Report is scheduled for completion by September 9, 2013.

Benefits

The completion of the construction of the containment remedy in 1993 will provide long-term reduction of risk to human health. The soil cover over the site reduces the risk from direct contact with the residual wastes at the site.

The site is currently ready for anticipated use (non-residential).

National Priorities Listing (NPL) History

Proposed Date: 06/24/1988

Final Date: 10/04/1989

Deletion Proposal Date: 06/23/2006

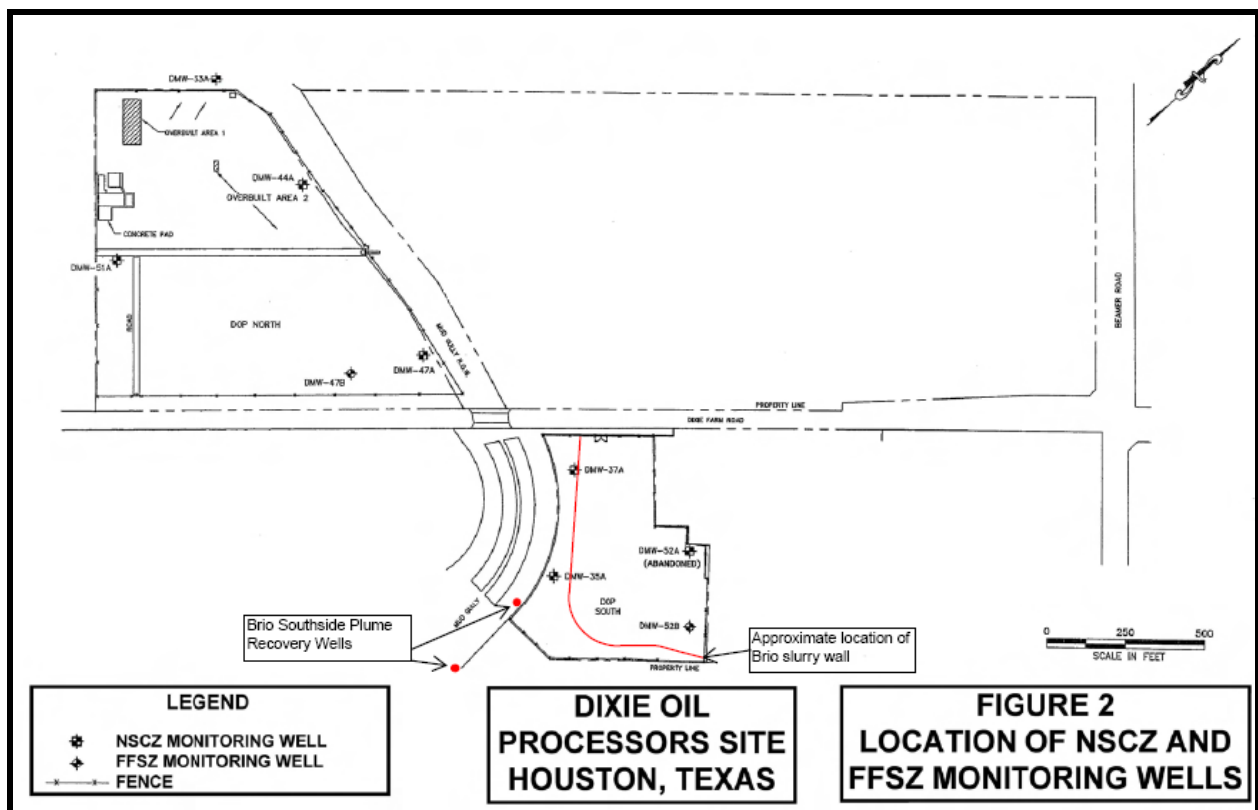
Final Deletion Date: 08/22/2006

Population: Approximately 3600 people live within the 2000 census tract surrounding the site.

Setting: The site occupies approximately 26 acres; Dixie Farm Road divides the site into two parcels, the northern tract of 19 acres (DOP North), historically used for storage purposes, and the southern tract of about 7 acres (DOP South) where processing activities occurred. Mud Gully, a flood control ditch and local tributary of Clear Creek, runs along the eastern boundary of DOP North and the western boundary of DOP South. The surrounding area is a combination of undeveloped and developed properties. Developed properties include residential homes and the San Jacinto Community College.

Hydrology: The upper water bearing zone is the Numerous Sand Channel Zone (NSCZ), which includes interbedded sands, silts, and silty clays and ranges between 4-feet and 27-feet thick. The NSCZ flows toward and discharges into Mud Gully. The next deeper water bearing zone is the Fifty-Foot Sand, which is separated from the NSCZ by the Middle Clay, which varies between 8-feet and 20-feet thick. The Fifty-Foot Sand ranges between 35-feet and 45-feet thick and flows to the south-southeast.

Site Map



Wastes and Volumes

The principal soil pollutants are ethylbenzene, hexachlorobenzene and copper. There are approximately 107,000 cubic yards of contaminated soil at the site. The NSCZ contained 1,1,2-trichloroethane and copper in addition to other contaminants. No ground water contamination was detected in the Fifty-Foot Sand Zone.

Health Considerations

The risk assessment concluded there are elevated health risks associated with exposure to residual wastes at the site prior to remediation.

The site's Environmental Indicator status is human exposure under control and ground water migration under control.

Record of Decision (ROD)

The Record of Decision (ROD) was issued on March 31, 1988. The selected remedy included the following:

- Removal of surface tanks and disposal of residuals,
- Covering the site with 6 inches of topsoil and grading to promote runoff, and
- Channelizing Mud Gully to remove any flow restrictions.

Construction completion was achieved on June 9, 1993.

Community Involvement

Proposed Plan and Public Meeting: February 1988
Technical Assistance Grant: January 1994

Information Repository: At the Brio Superfund site, located at:
11810 South Hill Drive
Houston, TX 77089

Attn: John Danna
(281) 922-1054

Site Contacts

EPA Remedial Project Manager:	Gary Miller	214-665-8318
State Project Manager:	Faye Duke	512-239-2443
EPA Community Coordinator and Regional Public Liaison:	Donn Walters	214-665-6483
State Community Relations	Crystal Taylor	512-239-3844
EPA Site Attorney:	Anne Foster	214-665-2169
EPA State Coordinator:	Kathy Gibson	214-665-7196
EPA Toll-Free Telephone Number:		1-800-533-3508