



Environmental
Protection Agency



Maumee Area of Concern Boundary Realignment and Expansion

Prepared by Cherie Blair, Maumee RAP Coordinator, Ohio EPA
June 8, 2010

The Ohio Environmental Protection Agency, in conjunction with the Partners for Clean Streams (Maumee RAP Advisory Committee), respectfully request a realignment and minor expansion to the Maumee Area of Concern. This request for realignment of the Maumee Area of Concern is being made primarily due to Ohio EPA's change from using HUC 11/14 to HUC 10/12 to delineate areas for its sampling, TMDLs, and watershed management programs. With this change, the current Maumee AOC boundary no longer lines up with the watershed boundaries. This is most evident in the headwaters of the Toussaint River (southern portion of the AOC near Bowling Green).

Along with the realignment, it is also being requested that the western border of the Maumee AOC be expanded to align with the headwaters of the Swan Creek and Ottawa River watersheds; rather than by the political county boundaries as originally defined. The *DRAFT - Maumee AOC Stage 2 Watershed Restoration Plan (2006)* already includes these areas since it was the logical approach to restoration and improvement of these waterways. The proposed western border change will simply make it official, and much easier for mapping and data management purposes.

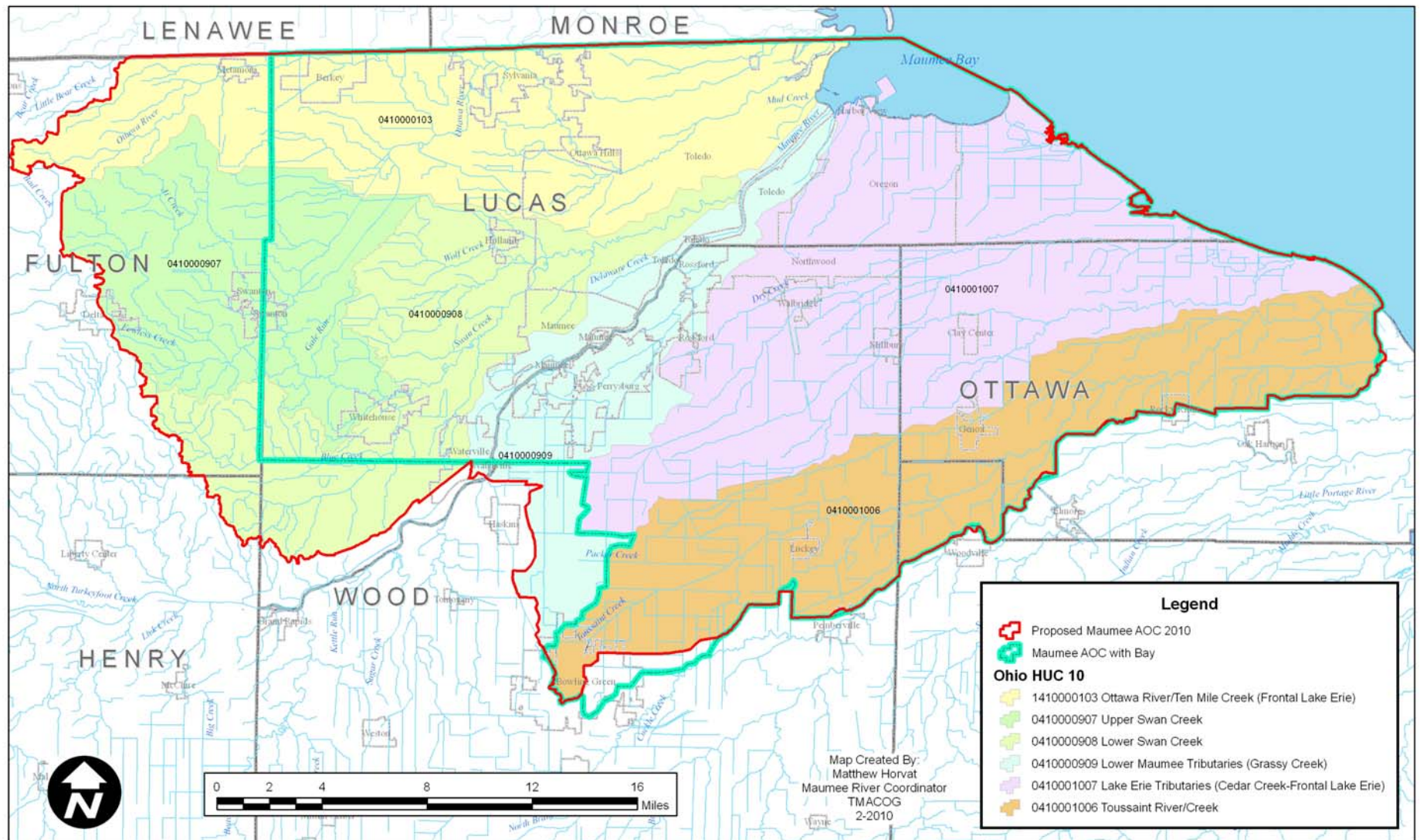
Realigning the Maumee AOC to the HUC 10/12 boundaries and including the headwaters does NOT change the number of Beneficial Use Impairments, nor does it add any known Great Lakes Legacy Act eligible sites. The majority of the area being added is rural, agricultural lands.

The Maumee AOC was originally identified in the *Maumee Area of Concern Stage 1 Report (1990)* as the area extending from the Bowling Green water intake near Waterville along the Maumee River at river mile 22.8 downstream to Maumee Bay. The area included direct drainage into the waters that are within Lucas, Ottawa, and Wood counties. This includes Swan Creek, Ottawa River (Ten Mile Creek), Duck Creek, Otter Creek, Cedar Creek, Grassy Creek, and Crane Creek. In 1992, this area was extended to the east to include Turtle Creek, Packer Creek, and the Toussaint River. In 2009, in accordance with the US EPA Great Lakes National Program Office efforts to map each AOC, the Maumee AOC map was modified to include Maumee Bay. Although this area had always been a part of the AOC, the focus of efforts had been on the river systems; noting that improvements to the rivers and streams would benefit the Bay.

Attachment 1 is a map that illustrates the current AOC boundary in green and the proposed realignment boundary in red. It should be noted that the 2009 modification to show the Maumee Bay as a part of the Maumee AOC has been retained.

Attachment 2 is a letter supporting this modification from Partners for Clean Streams. Partners for Clean Streams, Inc. (PCS) was formed in early 2007 as a 501(c)3 non-profit community organization with an interest in supporting local and regional water quality improvements in the metro-Toledo area. The mission of PCS is to strive for abundant open space and a high quality natural environment; adequate floodwater storage capacities and flourishing wildlife; stakeholders who take local ownership in their resources; and rivers, streams, and lakes that are clean, clear and safe. In January 2008 PCS announced that the Maumee RAP Advisory Committee (RAC) was now nestled within the committee structure of PCS to assist the PCS Board of Directors to deliver a wide range of programs, projects, and community outreach efforts associated with water quality improvements that have been of long standing interest to the Maumee RAP community.

Attachment 1 – Proposed Maumee AOC Boundary Realignment & Expansion



Attachment 2 – Support Letter from Partners for Clean Streams/Maumee RAP

Patrick Lawrence, Ph.D.
*President of Board & Maumee RAC Chair,
Associate Professor, University of Toledo*

Anthony Sloma
*Vice President of Board of Directors
Environment Health & Safety Manager,
Perstorp Polyoils*

Colleen Dooley
*Treasurer of Board of Directors
Attorney, Private Practice*

Jennifer Huber
*Secretary of Board of Directors & DAC Chair
Citizen*

John Hull, P.E.
*Board Member
President, Hull & Associates, Inc.*

Scott Ousky
*Board Member
Citizen*

Terry Shankland
*Board Member
CEO, Shankland's Catering*

Tim Schetter
*Board Member
Land Planning & Acquisition Manager
Metroparks of the Toledo Area*

Timothy Walters, Ph.D.
*Board Member
Senior Ecologist, Mannik & Smith Group, Inc.*



June 7, 2010

Mr. Gary Gulezian, Director
USEPA - Great Lakes National Program Office
77 West Jackson Blvd. (G-17J)
Chicago, IL 60604-3511

Dear Mr. Gulezian:

On the behalf of the Board of Directors for Partners for Clean Streams Inc. (PCS), we are writing to endorse the proposal by Ohio EPA to realign and expand the boundary of the Maumee Area of Concern (AOC). These changes will allow for PCS, and the Maumee RAP community, to better focus their efforts at addressing the water quality and related environmental issues that face the Maumee AOC in reference to the identified beneficial use impairments.

Many recent, current and future projects and activities within the Maumee AOC address watershed scale issues and concerns to address the BUIs so realignment of the AOC boundaries to encompass those HUCs will provide for the enhanced efforts at making our waters again swimmable, fishable and drinkable.

Sincerely,

Patrick Lawrence, Ph.D.
President, Board of Directors

Water is Life!
Help Sustain PCS...
One Drop at a Time!

**Partners for
Clean Streams, Inc.**

*P.O. Box 203
Perrysburg, Ohio 43552
Office Phone: 419-874-0-PCS (0727)
Cell Phone: 419-205-5588
E-Mail: PCS@PartnersForCleanStreams.org
www.PartnersForCleanStreams.org*

Helping to support:

PARTNERING FOR CLEAN STREAMS