

MEMORANDUM

SUBJECT: Using EFAST2 in Windows 7

This memorandum provides instructions on how EFAST2 can be used on a computer that uses Windows 7, with a “workaround” that allows SCREEN3 to run properly. This specific workaround involves the installation of XP Mode to the Windows 7 computer.

It was recently brought to EPA’s attention that SCREEN3 does not work properly in a Windows 7 environment. This is because SCREEN3 (the air model within EFAST2) has not been updated in 12 years. The temporary fix (based on the Microsoft website) to allow older programs such as SCREEN3, and therefore EFAST2, to run in Windows 7 depends on whether the user has the Windows 7 Professional version or the Windows 7 home edition. For either version, the user needs to use/install XP Mode on their computer.

This memorandum provides instructions on how to use/install XP Mode on a computer that uses Windows 7. This is a simple procedure for users of Windows 7 Professional (and Enterprise or Ultimate). However, while installing XP mode on a computer with a Windows 7 home edition can be done, the procedure is more complicated. The procedures for both installations are described below. Information is also available directly from Microsoft at the following site: (<http://www.microsoft.com/windows/virtual-pc/download.aspx>)

Creating an XP Mode for Windows 7 Professional Versions

For EFAST2 to run properly on Windows 7, it will need to run in XP mode. Users with Windows 7 Professional should start with the link below.

<http://www.microsoft.com/windows/virtual-pc/download.aspx>

The displayed page will ask you for the specific operating system you are using. For this version to work, you must have one of the following operating systems:

- Windows 7 Professional 32 or 64 bit
- Windows 7 Enterprise 32 or 64 bit
- Windows 7 Ultimate 32 or 64 bit

Next, choose a language (e.g., English).

You will then be prompted to download and install three items. The first item is Windows XP Mode. This file is approximately 500 mb. Click the “Windows XP Mode” button and follow the instructions for downloading and installing the program.

The second item to retrieve is Windows Virtual PC. Click this button to download/install Windows Virtual PC.

The last item to download is the Windows XP Mode update. Click this button and download/install this item.

After the installation of the three software items, perform the following tasks:

1. Click start.
2. Select All Programs.
3. Click Windows Virtual PC.
4. Click Windows XP Mode and run the setup program.

As noted above, XP Mode can also be installed on a Windows 7 computer containing the home edition. This procedure is discussed in the next section.

Creating an XP Mode for Windows 7, Home Edition

Users of the Home Edition operating systems, will need to create their own XP Mode.

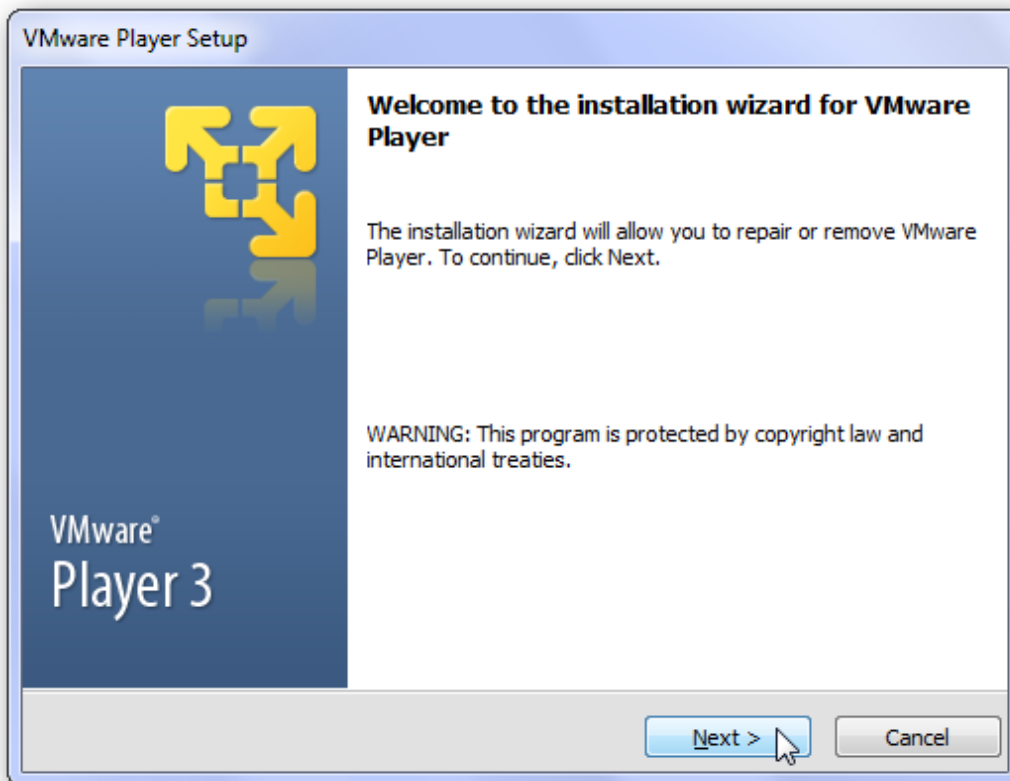
Note that Windows 7 Home Editions are not licensed to run the free XP Mode download from Microsoft. However, if you have a copy of Windows XP, you can recreate XP Mode with a product called VMware Player. VMware Player is a freeware virtualization software product from VMware, Inc. (a division of EMC Corporation).

VMware claims the Player offers superior performance for running Windows XP under Windows Vista or Windows 7, citing improved performance and better integration with Windows. VMware Player is only available for personal non-commercial use.

First, download and install VMware Player using the link below. It is a free download, but requires registration.

<http://www.vmware.com/products/player/>

The figure below is displayed after you begin running the setup program.



If you see any prompts about installing drivers, allow for them to be installed. When you are finished installing VMware Player, you will have to restart your computer by clicking the “Restart Now” button supplied by the VMWare setup program. Make sure you have saved data/documentation and exited all other programs before doing this.

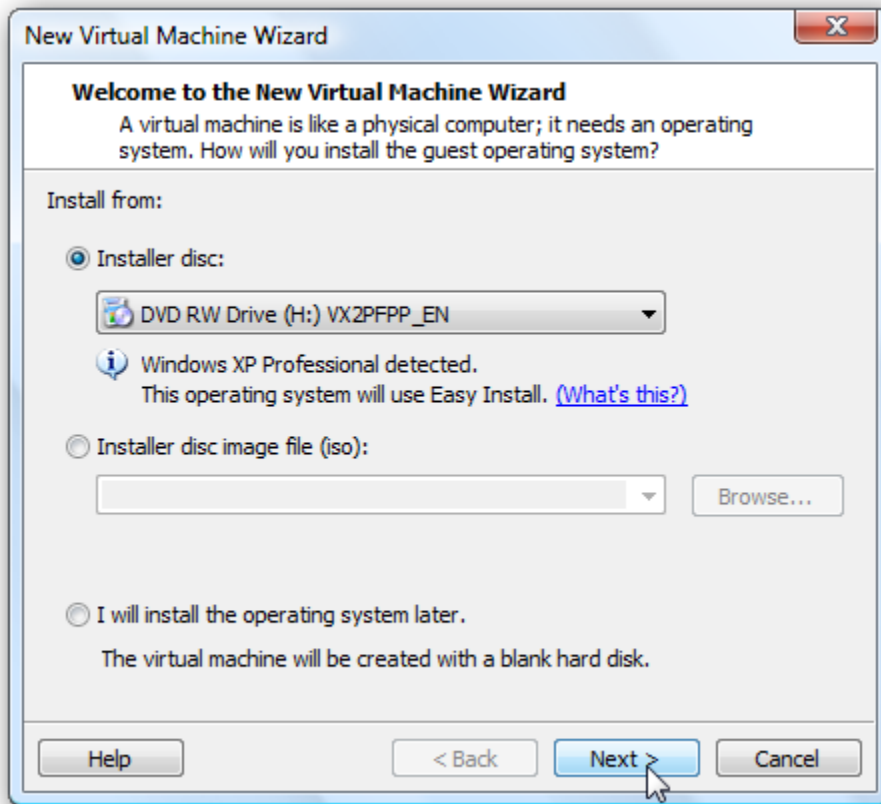
Create your own XP Mode

Before proceeding, make sure you have a copy of Windows XP on a CD along with the associated product key.

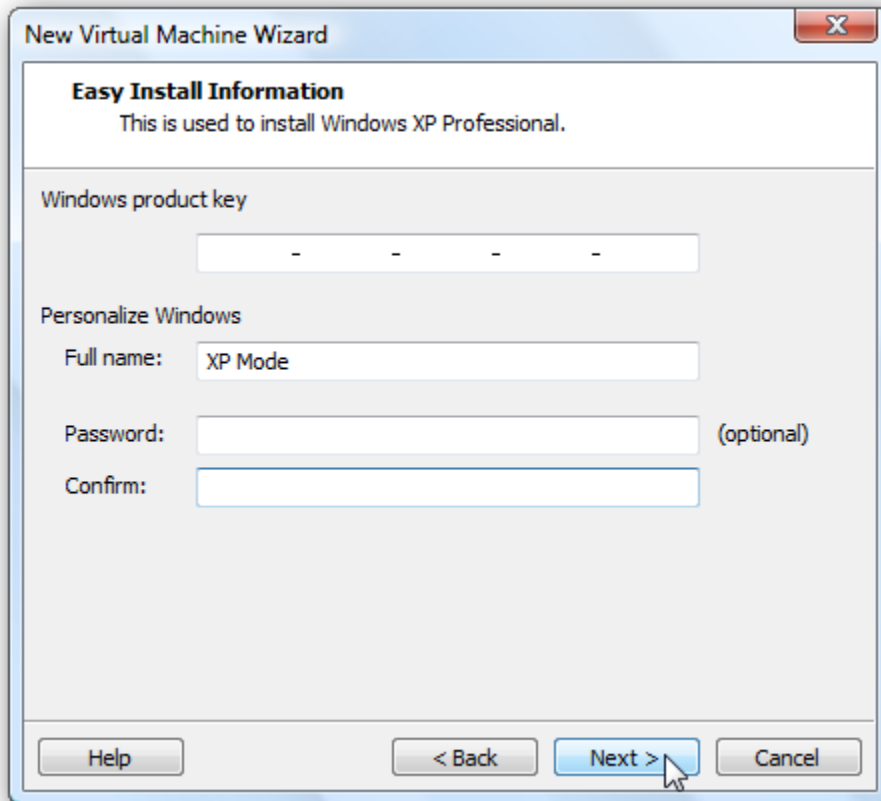
Once your computer is rebooted, start up VMware Player and insert your Windows XP CD in your CD drive. In VMware Player, click the link at the top that says “Create a New Virtual Machine.” As shown in the figure below.



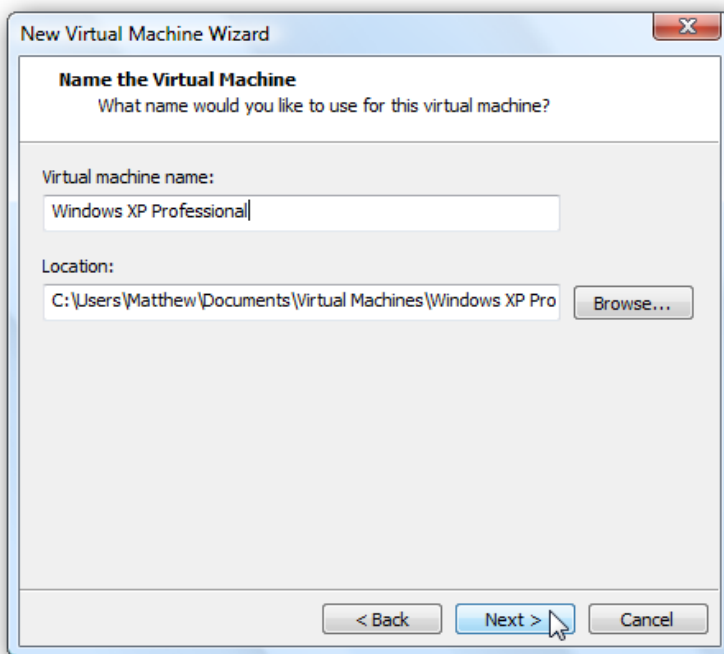
VMware automatically detects your Windows XP CD, and says it will install it with Easy install. Click Next to continue.



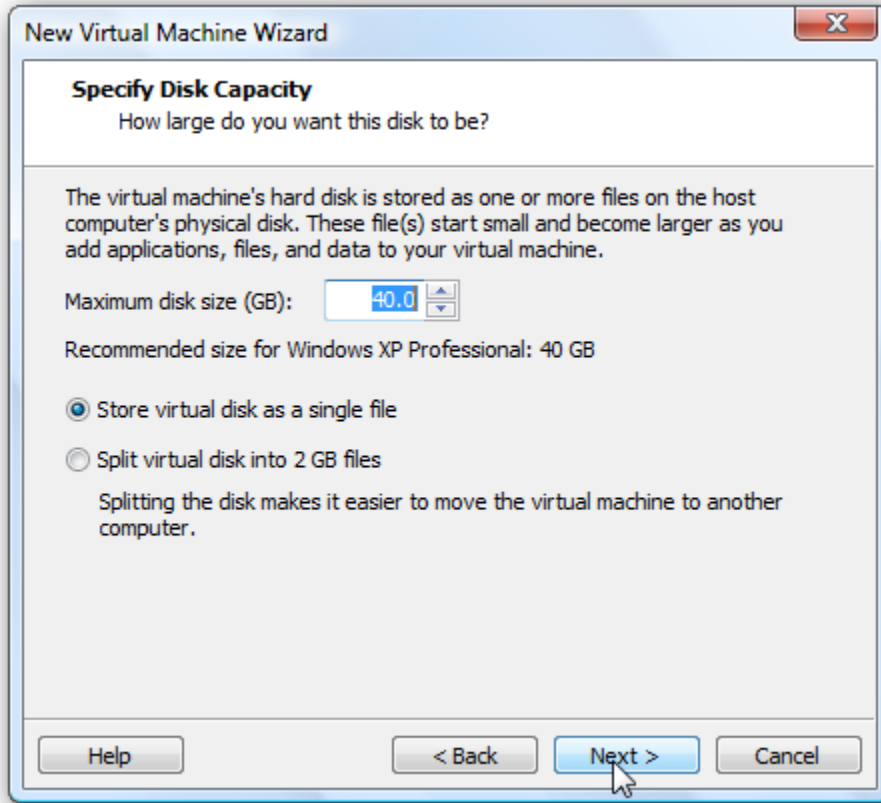
Next, enter your XP product key, and name and password of your choice. In this example, “XP Mode” was used, but any name/description can be entered.



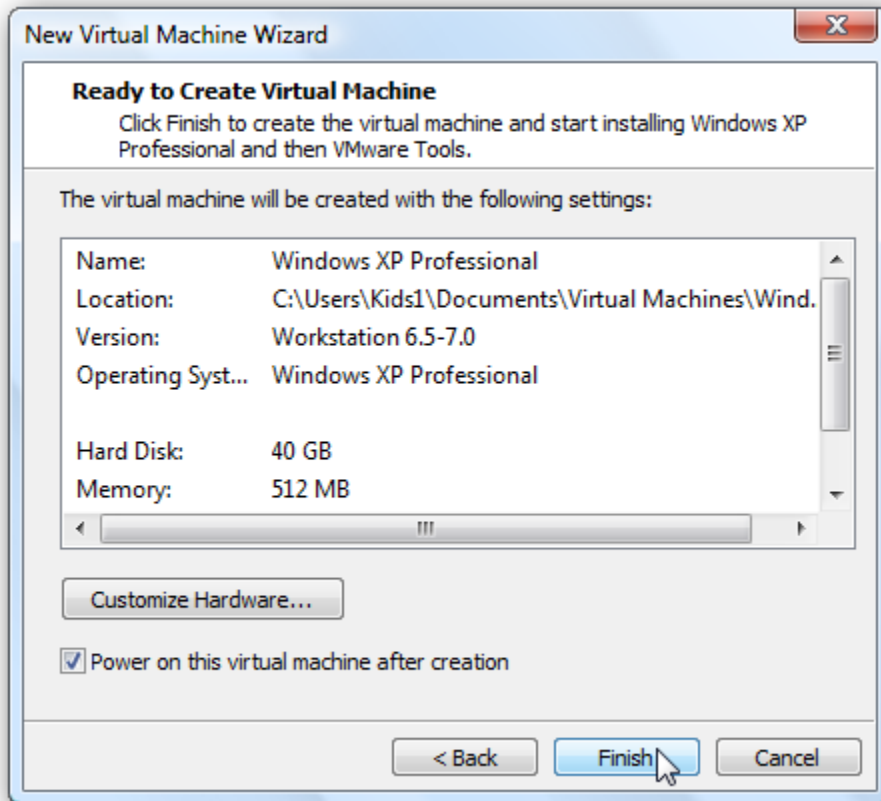
VMware will automatically enter your operating system's name and the default location to save the files. Click "Next" to accept the defaults, or change them if you wish.



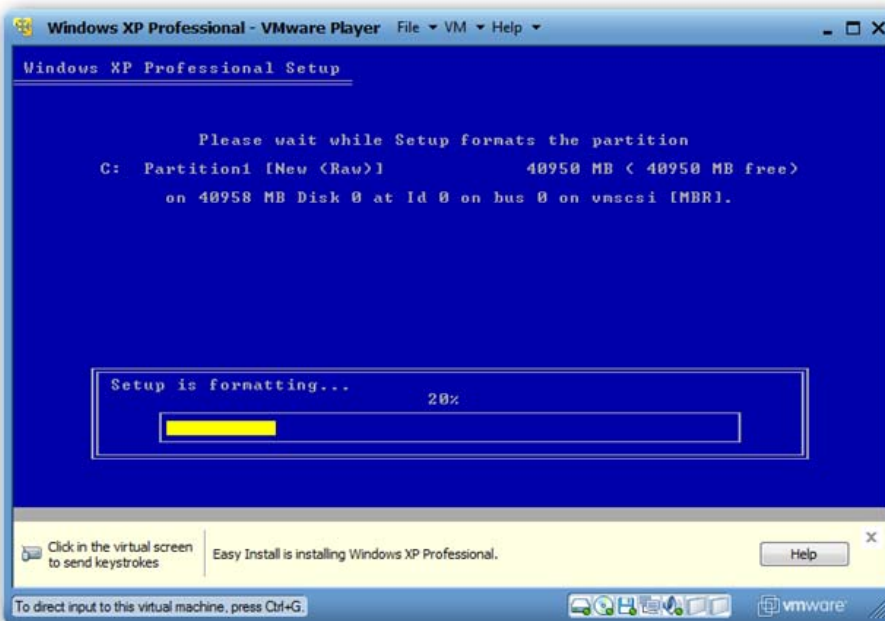
You can choose how large you want your virtual hard drive to be; the default is 40Gb, but you can choose a different size if you wish. For EFAST2, it is recommended that you select at least 100 mb. Note that the entire 40Gb will not be taken up on your hard drive.

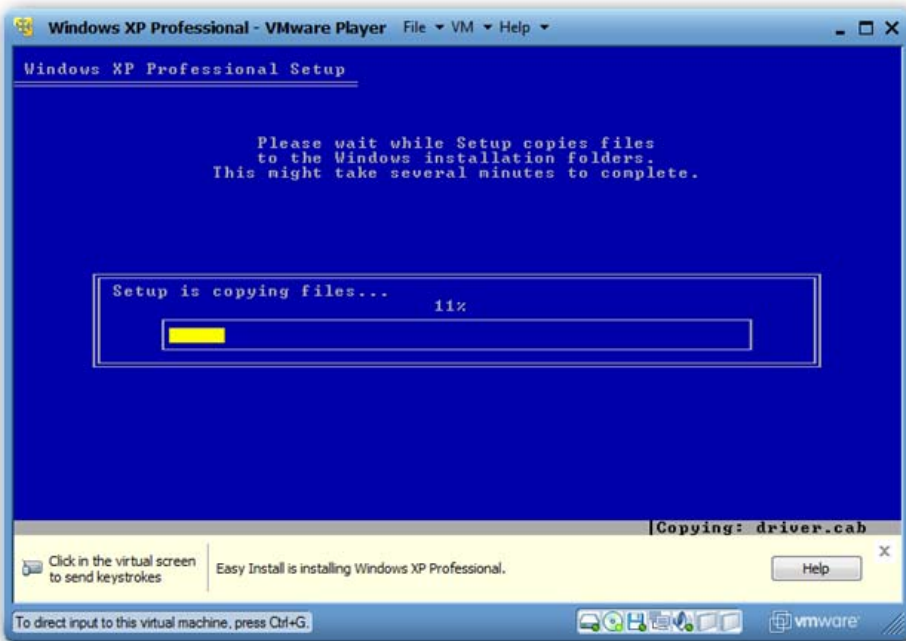


You can review and make changes as displayed in the figure below, or click “Finish” to start installing XP.



VMware will automatically run the installer, format the virtual hard drive, copy XP files to the hard drive, and finish the install. The next three figures show what you should expect to observe during this process.

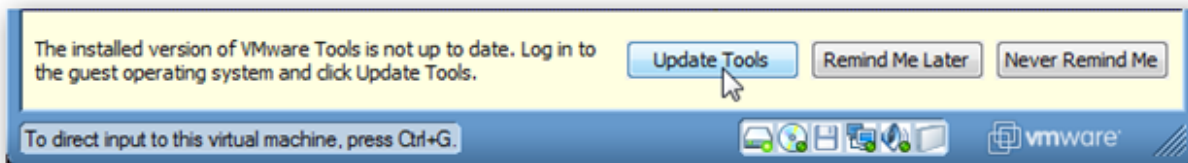




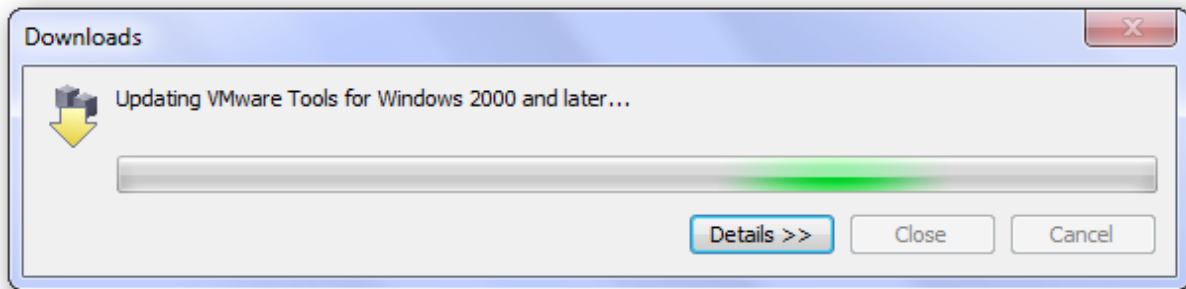
This process can take about 20 minutes to install. Upon completion of the installation, Windows XP desktop ready for use as shown in the figure below.



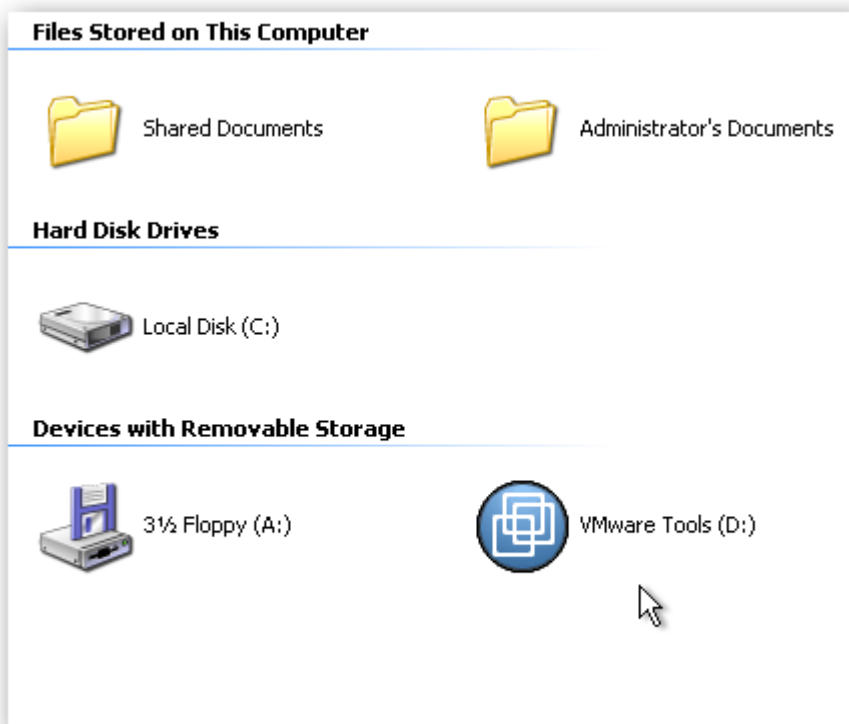
VMware Player will automatically launch the VMware Tools installer to integrate your virtual XP with your computer. It may have to download or update the tools, so if you see the yellow banner at the bottom of your window, click “Update Tools” or “Install Tools” button depending on your situation.



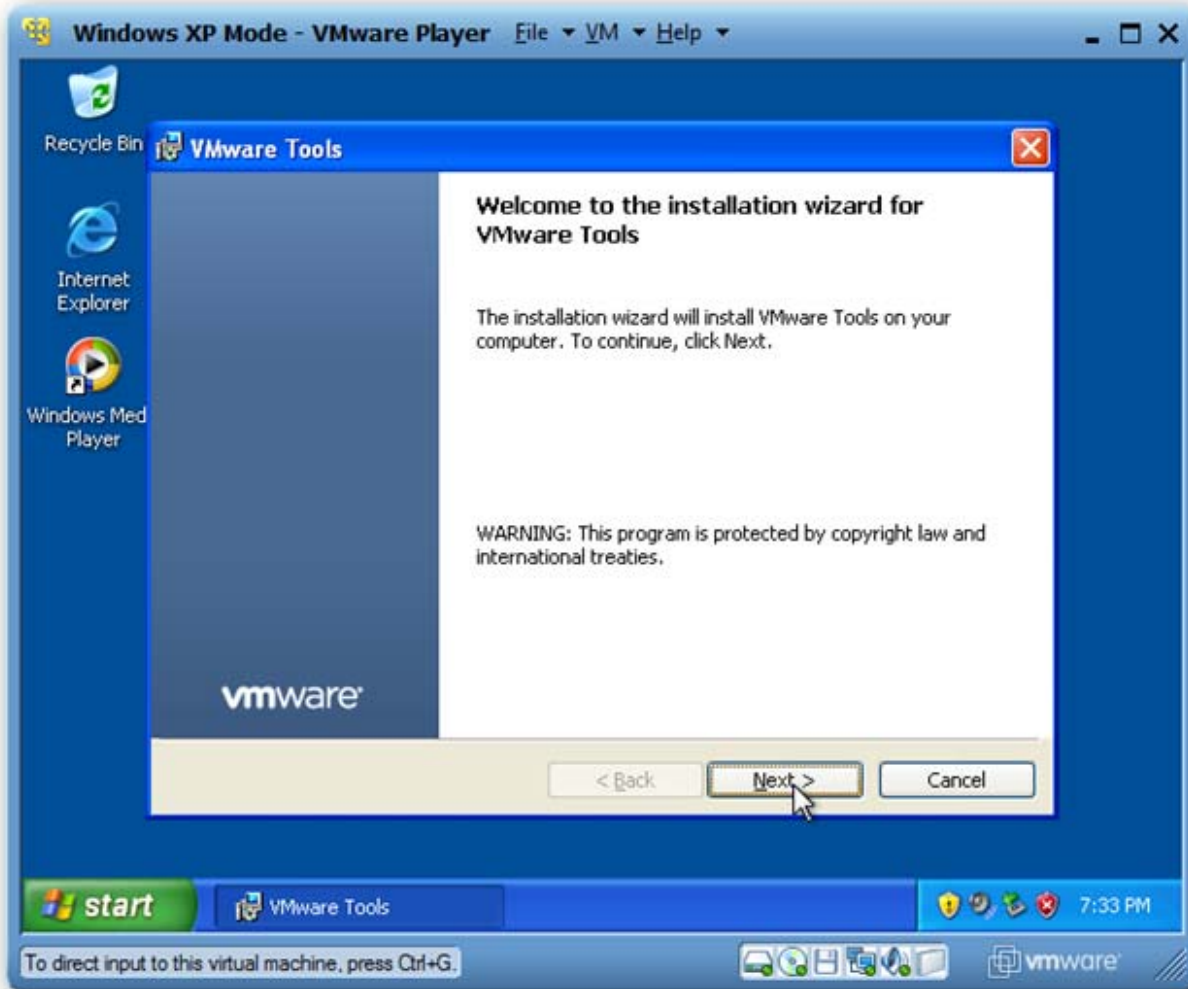
The tools will automatically download and install as shown in the figure below.



Once the tools are downloaded or updated, they should automatically run in XP. If not, click Start, then My Computer, and finally double-click on the CD drive which should say VMware Tools.



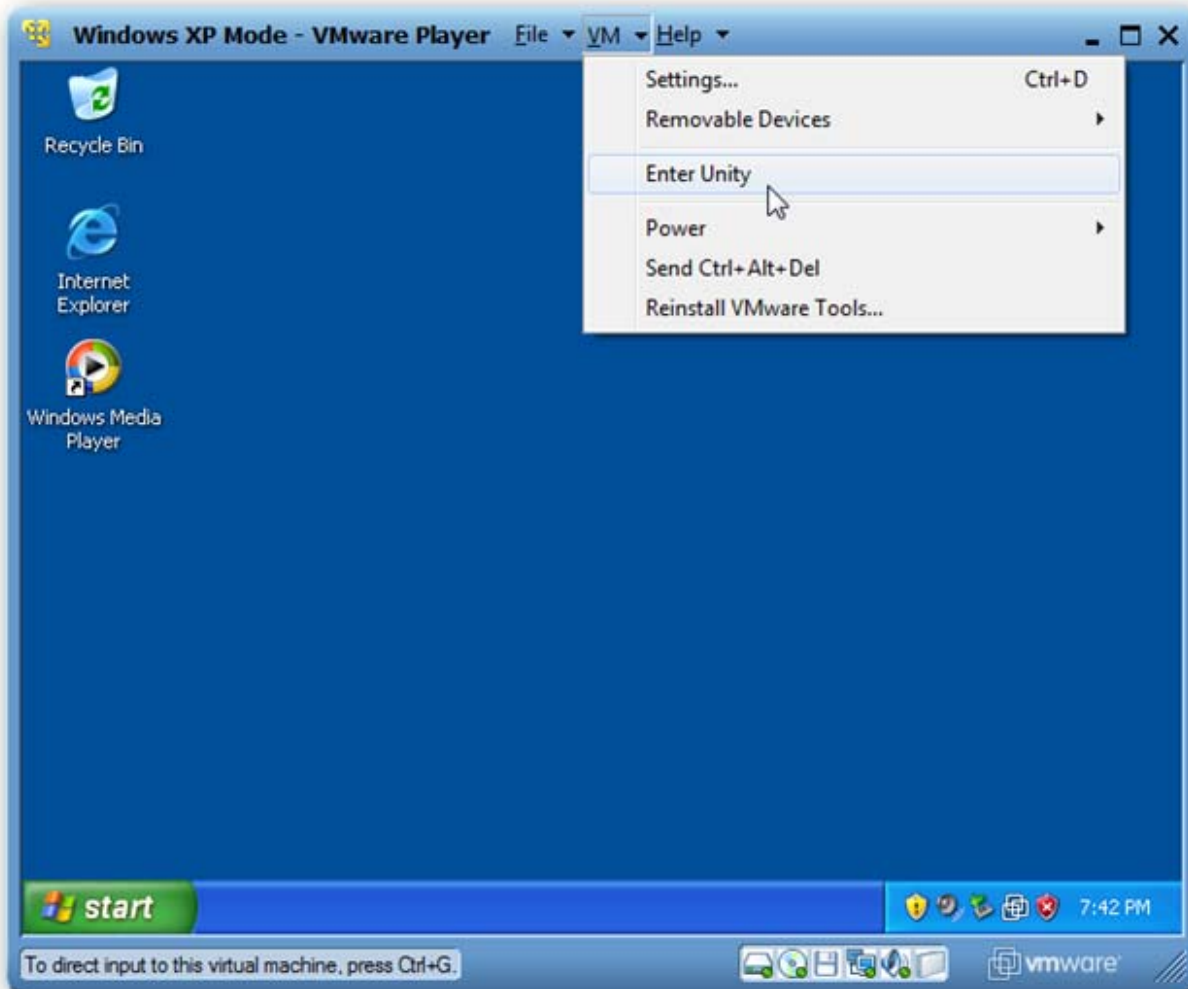
Next, run the Tools installer with the Typical setup type, and reboot XP when it's finished.



Now your XP is fully installed and setup, so you can proceed to integrate with your computer just like XP Mode.

Integrate XP Mode in VMware Player with Windows 7

To use your XP programs seamlessly with Windows 7, click VM on the top of the VMware window, and click "Enter Unity."



You can access EFAST2 in XP mode through a dedicated XP Mode Start Menu. When you hover over your Windows 7 Start button, a new button called “Windows XP Mode” will appear above it. Click there to access a full start menu from XP Mode while in Windows 7.