

Table of Contents

Updating to the Latest CAMEO <i>fm</i> from Version 2.1 or Later	2
Updating to the Latest CAMEO <i>fm</i> from Version 2.0 or Earlier	5

Updating to the Latest CAMEOfm from CAMEOfm Version 2.1 or Later

Installing a new version of CAMEOfm will overwrite your data. To ensure that your data is successfully transferred to the new version, follow these instructions carefully.

Phase 1: Before Installing CAMEOfm - Exporting Your Data

1. **Make a folder called “CAMEOfm Data Transfer”.** Place this folder anywhere on your computer that is convenient for you. This folder will be used to store all of the data files that you’ll need to complete the transfer of your existing data to the latest version of CAMEOfm.
2. **Start your existing version of CAMEOfm (version 2.1 or later).**
3. **Export the data from all modules.**
 - From the **File** menu, select **Import\Export**, and then click **Export**.
 - Click **Export ALL CAMEO data**.
 - Click **Yes** when asked about including site plan files in the export.
 - When prompted, browse to your CAMEOfm Data Transfer folder, enter a name for the export file, and then click **Save**.
 - Click **OK** on the completion message, and click **Close** on the Import/Export Log.

CAMEOfm has created a zipped file that you will use later to transfer all of your existing data to your new version of CAMEOfm. The information in the zipped file includes all of the data on your CAMEOfm records, including the site plan files, and any links to site plans or MARPLOT map objects. However, the map objects are not included in the zipped file.

Note: In the CAMEOfm program starting with version 2.1, some modules have “site plans” and other modules have “linked documents”. However, both types of files are stored in the SitePlans folder. In this section of the document, references to “site plans” cover both types of files.

As long as you are planning on installing the new CAMEOfm version in the same location as your existing version, you are now finished with Phase 1. However,

- **If you are installing it in a different location,** you need to follow step 5 on page 6 (from the Phase 1 instructions for older versions).
- **If you chose not to include the site plan files in the export file,** then you also need to follow step 4 on page 5 (from the Phase 1 instructions for older versions).

Phase 2: Before Installing CAMEOfm - Backing Up Your Data

It is always a good idea to make a backup copy of your existing data that you can use as an archive, because installing the new version of CAMEOfm will overwrite your data.

1. **Quit your existing version of CAMEOfm.**
2. **Make a zipped copy of your CAMEOfm data.**
 - Windows users: Zip your CAMEO Data folder, which stores all of your data (CAMEOfm records, site plans and document files, and MARPLOT map objects).
 - Macintosh users: Zip your CAMEO folder. (Macintosh users use Compress or Archive.)

Phase 3: Downloading and Installing CAMEOfm

Windows users: Download and run the installer. By default, the installer will place the program files in the CAMEO folder and the data into the CAMEO Data folder in a different location (to make the program compatible with write permission restrictions). You can choose the locations for these folders during the installation process. **Install your new version of CAMEOfm in the same locations that you used for your existing version of CAMEOfm**—unless you followed the instructions (mentioned on page 2) for installing in an alternate location.

Macintosh users: Download and open the installer .dmg file. Drag the CAMEO folder into your Applications folder. It will overwrite any existing folder, but you already made an archived copy in Phase 2.

Phase 4: Transferring Your Data and Synchronizing the Programs

1. **Transfer the site plan files manually; skip this step if you included your site plan files in your export in Phase 1 (or if you don't have site plan files).**
 - To transfer your site plan files manually, follow step 1 on page 8 (from Phase 4 instructions for older versions).
2. **Synchronize your new CAMEOfm and MARPLOT so that they will work together.** Skip this step if you do not use the MARPLOT program.
 - Start your new CAMEOfm.
 - Start MARPLOT.
 - Quit both programs.

3. **Import your old CAMEOfm data.**

- Start your new CAMEOfm.
- From the **File** menu, select **Import\Export**, and then **Import**.
- Browse to the export file that you stored in your CAMEOfm Data Transfer folder, then click **Open**. CAMEOfm will import all of your old records that you saved into the export file.
- Click **OK** on the completion message, and click **Close** on the Import/Export Log.

4. **Import your MARPLOT map objects manually; skip this step if you installed the new CAMEOfm in the same location as your old CAMEOfm (or if you don't have map objects).**

- To import your MARPLOT map objects manually, follow step 4 on page 9 (from the Phase 4 instructions for older versions).

Now that you've transferred all of your existing data to the new version of CAMEOfm, you can begin to work with the new program. You created an archive copy in Phase 2, so you can delete your CAMEOfm Data Transfer folder.

Updating to the Latest CAMEOfm from CAMEOfm Version 2.0 or Earlier

Installing a new version of CAMEOfm will overwrite your data. To ensure that your data is successfully transferred to the new version, follow these instructions carefully.

Phase 1: Before Installing CAMEOfm - Exporting Your Data

1. **Make a folder called “CAMEOfm Data Transfer”.** Place this folder anywhere on your computer that is convenient for you. This folder will be used to store all of the data files that you’ll need to complete the transfer of your data to the latest version of CAMEOfm.
2. **Start your existing version of CAMEOfm (version 2.0 or earlier).**
3. **Export the data from all modules.**
 - From the **File** menu, select **Import\Export**, and then click **Export**.
 - Click **Export ALL CAMEO data**.
 - When prompted, browse to your CAMEOfm Data Transfer folder, enter a name for the export file, and then click **Save**.
 - Click **OK** on the completion message, and click **Done** on the Import/Export Log.

CAMEOfm has created a zipped file that you will use later to transfer all of your existing data to your new version of CAMEOfm. The information in the zipped file includes all of the data on your CAMEOfm records, including any links to site plans or MARPLOT map objects. However, the site plans and map objects are not included in the zipped file.

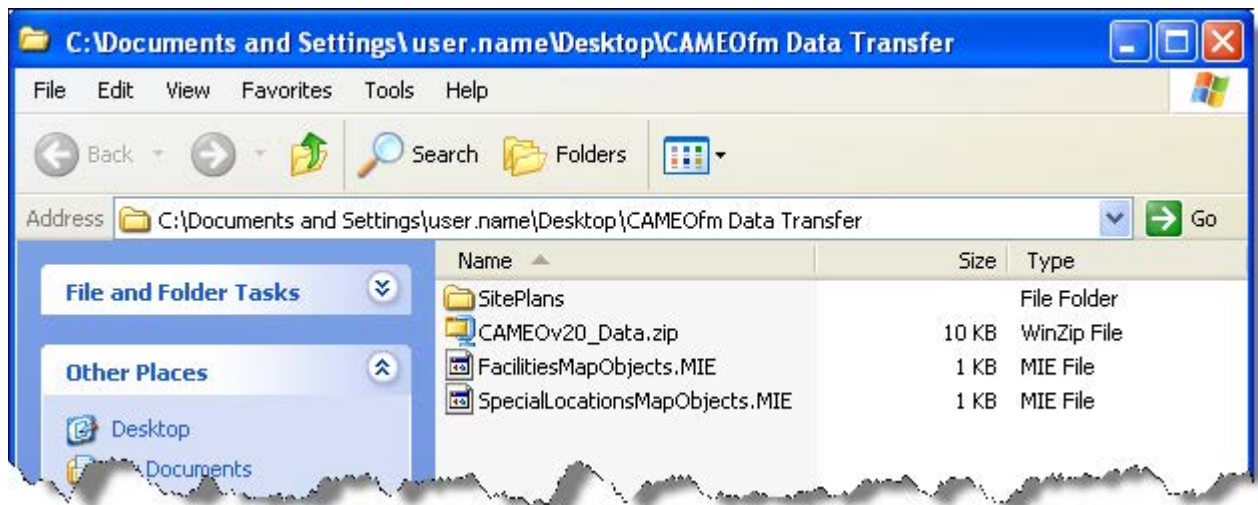
Note: You can skip the rest of the steps in Phase 1 if (1) you didn’t have any site plans or map objects in your previous version of CAMEOfm, or (2) you are a Windows CAMEOfm 2.0 user and you are planning on installing the new version in the same location as your previous version.

4. **Copy the SitePlans folder.** Make a copy of the SitePlans folder and place it in the CAMEOfm Data Transfer folder.
 - Windows CAMEOfm 2.0 users: Your SitePlans folder is in the CAMEO Data folder, which is typically in one of these locations:
 - C:\Documents and Settings\All Users\Documents\CAMEO Data (XP)
 - C:\Users\Public\Documents\CAMEO Data (Vista)
 - Windows CAMEOfm pre-2.0 users: Your SitePlans folder is in the CAMEO folder, which is typically in the Program Files folder or on the main level of the C drive.
 - Macintosh users: Your SitePlans folder is in the CAMEO folder, which is typically in the Applications folder.

5. **Export your map objects to MIE files.** (MIE files are specially formatted text files that MARPLOT uses for importing and exporting data.)

- Open a module that has records linked to map objects. Make sure all records in that module are showing, by selecting Show All Records from the Records menu.
- From the **Sharing** menu, select **MARPLOT**, then **Show All on Map**. The map objects linked to records will be selected and displayed in MARPLOT.
- While the objects remain selected, from **MARPLOT's File menu**, select **Export Overlay Objects**.
- Set up the export by selecting the **selected objects** and **MARPLOT Import/Export (MIE)** options, and then click **Export**.
- When prompted, browse to your CAMEOfm Data Transfer folder, enter a name for the export file, and then click **Save**.
- Repeat this process for each module that has records linked to map objects.

Your CAMEOfm Data Transfer folder should now contain all of the files you'll need to transfer your data to the new version of CAMEOfm. Your folder will look something like the one below.



Phase 2: Before Installing CAMEOfm - Backing Up Your Data

It is always a good idea to make a backup copy of your existing data that you can use as an archive, because installing the new version of CAMEOfm will overwrite your data.

1. **Quit your existing version of CAMEOfm.**
2. **Make a zipped copy of your CAMEOfm data.**
 - Windows CAMEOfm 2.0 users: Zip your CAMEO Data folder, which stores all of your data (CAMEOfm records, site plans files, and MARPLOT map objects).
 - Macintosh users and Windows CAMEOfm pre-2.0 users: Zip your CAMEO folder. (Macintosh users use Compress or Archive.)

Phase 3: Downloading and Installing CAMEOfm

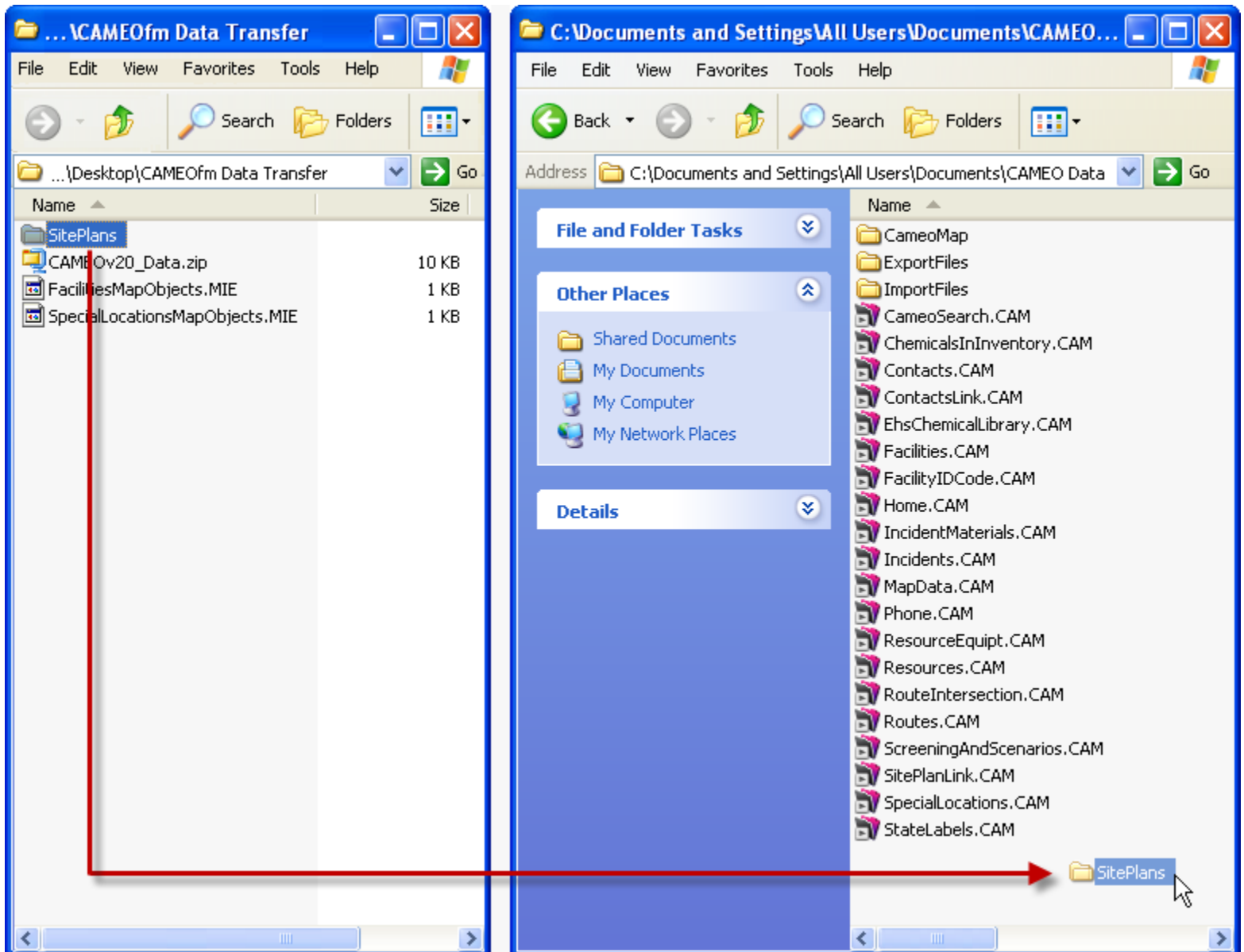
Windows users: Download and run the installer. By default, the installer will place the program files in the CAMEO folder and the data into the CAMEO Data folder in a different location (to make the program compatible with write permission restrictions). You can choose the locations for these folders during the installation process.

- CAMEOfm 2.0 users: We recommend installing your new version of CAMEOfm in the same location that you used for CAMEOfm 2.0, because it will simplify the transfer process.
- CAMEOfm pre-2.0 users: Delete your current CAMEO folder (you already made an archived copy in Phase 2). Allow the new CAMEOfm installer to create separate folders for the CAMEOfm program and the CAMEOfm data.

Macintosh users: Download and open the installer .dmg file. Drag the CAMEO folder into your Applications folder. It will overwrite any existing folder, but you already made an archived copy in Phase 2.

Phase 4: Transferring Your Data and Synchronizing the Programs

1. **Transfer the site plan files.** Skip this step if you didn't have any site plans in your previous version of CAMEOfm, or if you are a Windows CAMEOfm 2.0 user and you installed the new version in the same location as your previous version.
 - Open your CAMEOfm Data Transfer folder.
 - Macintosh users:
 - In another window, open your new CAMEO folder.
 - Copy the SitePlans folder from your CAMEOfm Data Transfer folder into your CAMEO folder.
 - Windows users:
 - In another window, open your new CAMEO Data folder.
 - Copy the SitePlans folder from your CAMEOfm Data Transfer folder into your CAMEO Data folder.



2. **Synchronize your new CAMEOfm and MARPLOT so that they will work together.**
 - Start your new CAMEOfm.
 - Start MARPLOT.
 - Quit both programs.

3. **Import your old CAMEOfm data.**
 - Start your new CAMEOfm.
 - From the **File** menu, select **Import\Export**, and then **Import**.
 - Browse to the export file that you stored in your CAMEOfm Data Transfer folder, then click **Open**. CAMEOfm will import all of your old records that you saved into the export file.
 - Click **OK** on the completion message, and click **Close** on the Import/Export Log.

4. **Import your MARPLOT map objects.** Skip this step if you didn't have any map objects in your previous version of CAMEOfm, or if you are a Windows CAMEOfm 2.0 user and you installed the new version in the same location as your previous version.
 - Start MARPLOT.
 - In MARPLOT, from the **File** menu, select **Import**.
 - Browse to the first MIE file in your CAMEOfm Data Transfer folder, and then click **Open**. The map objects are then added to the CAMEO Map (if there isn't already a map overlay for the objects, a new overlay will be created).
 - Repeat for each MIE file in your CAMEOfm Data Transfer folder.

Now that you've transferred all of your existing data to the new version of CAMEOfm, you can begin to work with the new program. You created an archive copy in Phase 2, so you can delete your CAMEOfm Data Transfer folder.

CAMEOfm pre-2.0 users: Beginning with CAMEOfm 2.0, the chemical library module and reactivity prediction tool are provided in a separate program (CAMEO Chemicals); those features are no longer installed with CAMEOfm. To use those features, you need to download and install the desktop version of CAMEO Chemicals, which is available at <http://response.restoration.noaa.gov/cameochemicals>.