

# NRCI and NRSI Verify Overview

September 1, 2010

# Verify NRSI & NRCI Certification Modules

- Software Requirements
- System Information
- Certification Process
- CDX Basics
- General Verify Information
- MyCDX In-Box
- Help Desk Information

# Software Requirements

- Computer with
  - Browser
    - Check your browser pop-up settings to be sure that CDX pop-ups are allowed.
  - PDF Reader
  - Spreadsheet Program (optional)
  - Text Editor (optional)

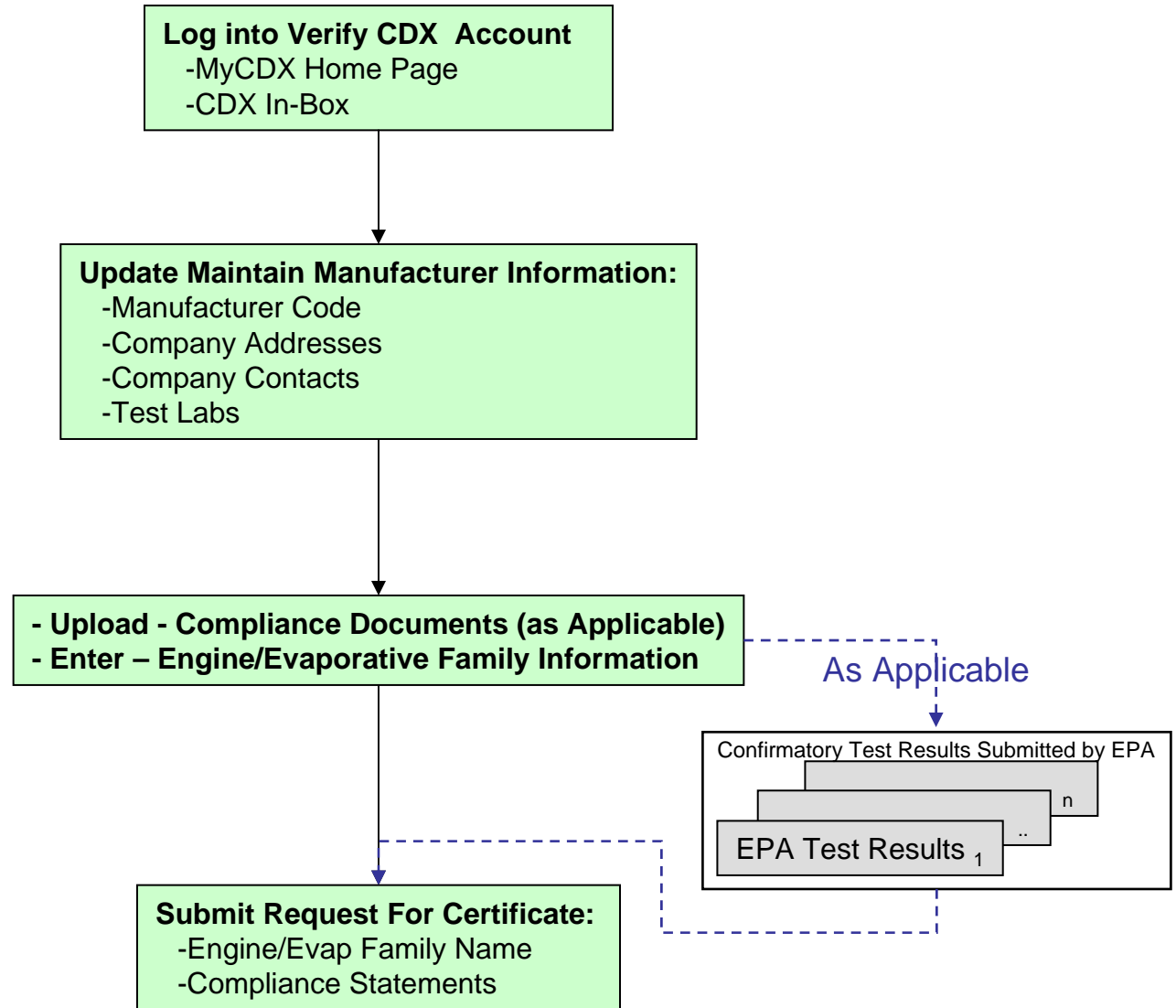
# System Overview

- CDX
  - Central Data Exchange - the Agency's single source for collecting electronic data from local governments and agencies, private industries, state governments, and tribes.
- Verify
  - Collects and processes emissions and fuel economy compliance information
    - for mobile sources of air pollution including light-duty vehicles; heavy-duty, non-road, and marine engines
  - Issues certificates of conformity
  - One of the programs connected to CDX

# Working with the System

- Manufacturer Code
  - <http://www.epa.gov/otaq/verify/mfr-code.htm>
  - Obtain an EPA Manufacturer Code, **or**
  - Establish an EPA Manufacturer Code in Verify
- Account Setup
  - <http://www.epa.gov/otaq/verify/setup.htm>
- Login to CDX
  - <http://cdx.epa.gov>
- Main Verify Web Page
  - <http://www.epa.gov/otaq/verify/>

# Verify's Certification Process





# Verify/CDX Log-In and MyCDX

- All users should have at least 3 items displayed under the “Available Account Profiles” header:
  - VERIFY: View or Maintain Manufacturer Information
  - VERIFY: Upload Compliance Documents
  - VERIFY: Non-Road Spark Ignition or Non-Road Compression Ignition

•Contact the Verify Help Desk if these three profiles are not listed on your MyCDX page or if you need access to other account profiles

9/1/2010



# Maintain Manufacturer Information

See separate user documentation for details about Verify's Maintain Manufacturer Information module

• <http://www.epa.gov/otaq/verify/publications.htm#presentations>

**U.S. Environmental Protection Agency**  
Logged in as: CHRISTIPORIER, Manufacturer: EPA - EPA (Logout)

## Manufacturer Information

**Maintain Manufacturer Profile**

\* = required field  
\* = CTRL-click to select multiple values

**Manufacturer** | Addresses | Contact Information | Notification Emails | Test Labs | Divisions | Alternate Manufacturers | EPA Compliance Representatives

### Manufacturer Information

Manufacturer Full Company Legal Name	Environmental Protection Agency	Manufacturer Code	EPA
--------------------------------------	---------------------------------	-------------------	-----

**Industries\***

Please include all applicable industries for which you will be requesting a certificate of conformity from EPA. For each selected industry, please include the first model year you expect to request a certificate.

<input checked="" type="checkbox"/>	Aircraft	First Model Year	2008
<input checked="" type="checkbox"/>	All Terrain Vehicle	First Model Year	2009
<input checked="" type="checkbox"/>	Alternative Fuel Converter (LDV/LDT/HDV Chassis Certified)	First Model Year	2010
<input checked="" type="checkbox"/>	Complete Heavy-Duty Highway Vehicle	First Model Year	2009
<input checked="" type="checkbox"/>	Heavy Duty Highway Compression Ignited	First Model Year	2009
<input checked="" type="checkbox"/>	Heavy Duty Highway Gas Evaporative	First Model Year	2009
<input checked="" type="checkbox"/>	Heavy Duty Highway Spark Ignited	First Model Year	2009
<input checked="" type="checkbox"/>	Highway Motorcycle	First Model Year	2009
<input checked="" type="checkbox"/>	ICI	First Model Year	2009
<input checked="" type="checkbox"/>	ICI: Light-Duty	First Model Year	2008
<input type="checkbox"/>	Independent Test Lab		
<input checked="" type="checkbox"/>	Large NonRoad Spark Ignited	First Model Year	2009
<input checked="" type="checkbox"/>	Light-Duty Vehicle & Truck	First Model Year	2009

# Upload Compliance Documents - General



[About CDX](#)  
[MyCDX](#)  
[Inbox](#)  
[Change Password](#)  
[Frequently Asked Questions](#)  
[Help & Support](#)  
[CDX Home](#)  
[Terms & Conditions](#)  
[Logout](#)

59:24  
[Click here to reset timer](#)

58:14  
[Click here to reset timer](#)

U.S. Environmental Protection Agency

## Upload EPA Compliance Documents From Manufacturer Workstation

Logged in as: CHRISTIPOIRIER, Manufacturer: EPA - EPA ([Logout](#))

MyCDX > Upload EPA Compliance Documents

Note:  
 1. Required fields are marked with \* and cannot be left blank.

[Help](#)

EPA Manufacturer Code	EPA
Document Path and File Name *	<input type="text"/> <a href="#">Browse...</a>
Path and File Name of Same Document in Alternate Format	<input type="text"/> <a href="#">Browse...</a>
Industry (CTRL + Click to select multiple values)	<input type="checkbox"/> Aircraft <input type="checkbox"/> All Industries <input type="checkbox"/> Heavy Duty Highway Spark Ignited <input type="checkbox"/> Heavy Duty Highway Gas Evaporative <input type="checkbox"/> Heavy Duty Highway Compression Ignited
Compliance Document Type *	Select <input type="text"/>
Compliance Document Type, if "Other"	<input type="text"/>
General Document Type	Select <input type="text"/>
General Document Type, if "Other"	<input type="text"/>
Compliance Document Topic	<input type="text"/>
Compliance Document Topic, if "Other"	<input type="text"/>
Confidentiality Status *	<input type="radio"/> CBI <input type="radio"/> FOIA
Document Applicability *	Select <input type="text"/>
Does this document apply to one/multiple specific model year (s)? *	<input type="radio"/> Yes <input type="radio"/> No
Model Year (CTRL + Click to select multiple values)	<input type="checkbox"/> 2004 <input type="checkbox"/> 2005 <input type="checkbox"/> 2006
Document Date *	<input type="text"/> <a href="#">select</a>
Title *	<input type="text"/>
Abstract *	<input type="text"/>
Keyword(s) * (CTRL + Click to select multiple values)	<input type="checkbox"/> Absorber <input type="checkbox"/> Air cooled <input type="checkbox"/> Alternative Fuel <input type="checkbox"/> Alternative Fuel Converter <input type="checkbox"/> CARB
Are you the document owner?	<input type="radio"/> Yes <input type="radio"/> No
Document Owner Name *	<input type="text"/>
Document Owner Phone *	<input type="text"/>
Document Owner E-Mail *	<input type="text"/>
Comments	<input type="text"/>

[Refresh](#)

[Review & Submit](#)

- Only one format of each document is needed (for example, only the active spreadsheet or a PDF of the spreadsheet should be submitted, not both)
- Select all of the applicable Industries for each document
- All applicable Compliance Document Types are listed in the pull-down so "Other" should never be selected
- If required based on the selection for Compliance Document Type, select the applicable value for Compliance Document Topic
- Select "CBI" for all NRSI documents
- It will help EPA if the Title field is as specific as possible (for example, include the engine family name and type of document)
- Select applicable key words for each document

# General Dataset Tips

- See Data Requirements and Business Rules spreadsheets to determine which fields are required (always or because of a business rule).
  - Both documents are found on the Verify Publications page (<http://www.epa.gov/otaq/verify/publications.htm>)
  - For all fields that are required either always or because of a business rule, there **must** be an entry.
  - There are few optional fields. In most cases when an entry is not required it is also not allowed.
  - Fields that are not optional for any user are marked with a red asterisk.

# General Dataset Tips, continued

- There are numerous fields with the term “Indicator”, this term is looking for the presence of the element it is describing (i.e., Certification Based on CARB Executive Order Indicator is asking whether the family is being certified using a CARB Executive Order).

# General Dataset Tips, continued

- Selecting items in a drop down menu
  - Mouse click an item to select or ‘de-select’
  - Press the CTRL key and click additional items to select more than one
  - Select an item, press the SHIFT key and click another item in the list to select all the items between the two.
- PDF files are dynamically generated.
  - One cannot compare file names to determine if the files are identical.

# General Dataset Tips, continued

- Carry over
  - When an engine family or evaporative family is carried over, enter the engine family or evaporative family for the original year that the family was certified (even if it was certified in FileMaker Pro).
  - The entire dataset must be entered even if a family is marked as carry over (with the exception of test results for an engine family dataset)
- Multiple sessions of Verify cannot be open.
- Engine Family, on the General Information tab, is case sensitive. (Use capital letters)


# Alternate Procedures

- Processing Report Viewing
  - Very large number of models and parts may cause problems
  - Save the file
  - Open in a text editor

# Flow

- Best to complete the tabs in order
  - Many choices in later tabs reflect early entries

# On-line Form



About CDX  
MyCDX  
Inbox  
Change Password  
Frequently Asked Questions  
Help & Support  
CDX Home  
Terms & Conditions  
Logout

59:33  
Click here to reset timer

## Verify: Engine and Vehicle Compliance System

MyCDX > Non-Road Compression Ignition > Certification Information Submission

Logged in as, CWICKCDX, Manu

### Certification Information Submission

\* = required field  
+ = CTRL-click to select multiple values

General Information   Emission Control System   Models and Parts   Adjustment Factors   Durability Information   Test Information

**General Information**

Manufacturer Code: EPA

Process Code\* :    Model Year\* :

EPA Engine Family Name\* :    Manufacturer Engine Family Name :

Alternate Trade Names (on Label)	+ Add	Delete
<input type="text"/>		

Branding Arrangements (4000 characters available)

Manufacturer Type\* :    List of engine families that are being modified, if any (500 characters available)

Running Change Type+ :

- 1 = New ratings (Add new models/codes to list of models DE 103, etc.)
- 2 = Part numbers (Change, delete, or add additional, component part numbers. DE 142)
- 3 = Fuel rates (Revise fuel rates of a model. DE 122, 123)
- 4 = Torques/ Powers/ Speeds (Revise torques or powers or speeds in list of models. DE 112-121)
- 5 = AECDS (Revise AECDS. DE 94-99)
- 6 = Test Data (Add, delete, change test results. DE147-217)
- 7 = IRAFs (Change or delete Infrequent Regeneration Adjustment Factor. DE 191-195)
- 8 = Delete ratings (Delete models/codes from list of models. DE 103, etc.)

- Make selections, type entries to fill out the form.

# Save. Review and Submit

Alternate Useful Life Approval Date (MM/DD/YYYY):

**Production Information**

Total Projected Sales\*:  Projected Sales (FED)\*:

Projected Sales (CA)\*:

Production Start Date (MM/DD/YYYY)\*:

Production End Date (MM/DD/YYYY)\*:

Manufacturing Plants building these Engines\*+:

Agent(s) for Service in U.S.\*+:

U.S. Port of Import Name	City	State	+ Add
<input type="text"/>	<input type="text"/>	Select	+ Add

Manufacturer Comments about Engine Family (4000 characters available)

- Save often (Save Form button is at the bottom of each tab.)

- Review and Submit when complete. (Button at the bottom of each tab.)

You are in an encrypted secure session.

58:20  
Click here to reset timer

Help Desk: (888) 890-1995  
[EPA Home](#) | [Privacy and Security Notice](#) | [Contact Us](#)  
| IRI | <http://www.epa.gov/epahome/usenotice.htm>

# Results of Review



About CDX  
MyCDX  
Inbox  
Change Password  
Frequently Asked Questions  
Help & Support  
CDX Home  
Terms & Conditions  
Logout

59:35  
Click here to reset timer

## Verify: Engine and Vehicle Compliance System

MyCDX > Non-Road Compression Ignition > Certification Information Submission

Logged in as, CWICKCDX, Manu

### Certification Information Submission

\* = required field  
+ = CTRL-click to select multiple values

- General Information
- Emission Control System
- Models and Parts
- Adjustment Factors
- Durability Information
- Test Information

- EPA Engine Family Name cannot be less than 12 characters in length.
- Does this Engine Family include engines for electrical generator sets? is a required field.
- Description of Testing and Approach used to determine that NTE Requirements were met is a required field.

#### General Information

Manufacturer Code: EPA

Process Code\*:  Model Year\*:

EPA Engine Family Name\*:  Manufacturer Engine Family Name:

Alternate Trade Names (on Label)	+ Add
<input type="text"/>	- Delete

Branding Arrangements (4000 characters available)

Manufacturer Type\*:

List of engine families that are being modified, if any (500 characters available)

- 1 = New ratings (Add new models/codes to list of models DE 103, etc.)
- 2 = Part numbers (Change, delete, or add additional, component part numbers. DE 142)
- 3 = Fuel rates (Revise fuel rates of a model. DE 122, 123)
- 4 = Torques/ Powers/ Speeds (Revise torques or powers or speeds in list of models. DE 112-121)

- This first validation checks basic format and completion.
- Errors are listed at the top of each tab
- Error links go to the field to be fixed.
- After any errors are corrected and the file is successfully submitted the results of the second validations will be displayed in the Submission Processing Report.

# My CDX In-Box

- Notifications

- All messages in the in-box should be opened and reviewed. The subject line that shows in the in-box does **not** indicate whether the file has been accepted.

The screenshot displays the EPA MyCDX In-Box interface. At the top, it says "Inbox - All Messages: SARAZAREMSKI" and "U.S. Environmental Protection Agency". A navigation menu on the left includes "About CDX", "MyCDX", "Inbox", "Change Password", "Frequently Asked Questions", "Help & Support", "CDX Home", "Terms of Use", and "Log Out". The main content area shows a list of messages with columns for "All", "From", "Subject", and "Date". A red arrow points from the "Verify Administrator" entry in the list to a detailed message view below. The message view shows the subject "Submission accepted for NRSI Evaporative Family BEPAPTANK002" and the date "Mon 8/23/2010 6:03 AM". The body of the message states: "Your recent submission for the NRSI Evaporative Family BEPAPTANK002 has been received by EPA. You will be notified if any additional actions on your part are required. The following document identifier has been assigned to this request: \_761a5ffd-55cc-4d5e-ba23-33f2c13b25fb". Below this, it provides the transaction identifier and a link to view the status history. A red arrow points from the "Click here to view the status history" link to a "Status History" table on the right. The table shows two entries for "Mon 08/23/2010 6:05 AM" and "Mon 08/23/2010 6:06 AM", both with a status of "Completed". The description for the first entry says: "Your recent submission for the NRSI Evaporative Family BEPAPTANK002 has been received by EPA. You will be notified if any additional actions on your part are required. The following document identifier has been assigned to this request: \_761a5ffd-55cc-4d5e-ba23-33f2c13b25fb". The description for the second entry says: "Your recent Non-Road Spark Ignition Evaporative Components/Equipment Submission submission has been received by the EPA and you will be notified if any additional actions on your part are required. A Submission Processing Report and any requested dataset reports can be found on the status history page. The status history page can be reached by clicking on the link near the bottom of this inbox message." Below the table, it says "The following is a summary of the processing report: Total Datasets Submitted: 1, Accepted Datasets: 1, Rejected Datasets: 0". At the bottom of the message view, it says "Thank you for submitting your request to Verify via CDX." and a "Back To Inbox" button is visible.

Date	Status	Description
Mon 08/23/2010 6:05 AM	Completed	Your recent submission for the NRSI Evaporative Family BEPAPTANK002 has been received by EPA. You will be notified if any additional actions on your part are required. The following document identifier has been assigned to this request: _761a5ffd-55cc-4d5e-ba23-33f2c13b25fb
Mon 08/23/2010 6:06 AM	Completed	Your recent Non-Road Spark Ignition Evaporative Components/Equipment Submission submission has been received by the EPA and you will be notified if any additional actions on your part are required. A Submission Processing Report and any requested dataset reports can be found on the status history page. The status history page can be reached by clicking on the link near the bottom of this inbox message.

The following is a summary of the processing report:  
Total Datasets Submitted: 1  
Accepted Datasets: 1  
Rejected Datasets: 0

Verify Overview

# My CDX In-Box

- When a file is submitted, the following files are returned:
  1. XML File containing the input
  2. Submission Processing Report
    - If a file is rejected, this will be the file that contains any business rule violations that prevented the application from being submitted
    - When the file is accepted, this file contains all of the information that was submitted as well as any values assigned by Verify, calculations performed by Verify and all applicable Pass/Fail reports.
  3. Certificate Summary Report (CSI)
    - This file is only sent to the in-box when a file is accepted by Verify
    - This file contains all of the information that was submitted as well as any values assigned by Verify, calculations performed by Verify and all applicable Pass/Fail reports.

The status of your submission is shown below:

- Submission
  - Document Name: [NonRoadSparkIgnitionEvaporativeSubmission.xml](#) <sup>1</sup>
  - Transaction Id: [\\_761a5ffd-55cc-4d5e-ba23-33f2c13b25fb](#)
  - Date Originally Submitted: 08/23/2010

- Status History

Date	Status	Description
Mon 08/23/2010 6:05 AM	Completed	Your recent submission for the NRSI Evaporative Family BEPAPTANK002 has been received by EPA. You will be notified if any additional actions on your part are required The following document identifier has been assigned to this request: <a href="#">_761a5ffd-55cc-4d5e-ba23-33f2c13b25fb</a>
Mon 08/23/2010 6:06 AM	Completed	Your recent Non-Road Spark Ignition Evaporative Components/Equipment Submission submission has been received by the EPA and you will be notified if any additional actions on your part are required. A Submission Processing Report and any requested dataset reports can be found on the status history page. The status history page can be reached by clicking on the link near the bottom of this inbox message.  The following is a summary of the processing report:  Total Datasets Submitted: 1 Accepted Datasets: 1 Rejected Datasets: 0

- Returned Documents
  - [SubmissionProcessingReport.xml](#) <sup>2</sup>
  - [CSI-BEP+FTSNK002.pdf](#) <sup>3</sup>

# My CDX In-Box

- Submission Processing Reports
  - This report contains all of the information that was entered in a given dataset.
  - There will be a list of any business rules violated at the bottom of the processing report if a dataset is rejected. See below.
  - Fix any fields that are associated with the business rule errors and resubmit the rejected dataset.

## Transaction Status Details

**Transaction Status Identifier :** REJECTED

**Transaction Message Text :** NRSI-EV-BR59a - When characters 6 through 9 of Evaporative Family Name (NRSI-EV-7) equal 'TANK', if Design Based Certification Indicator (NRSI-EV-25) equals 'No', or if Certification Based on CARB Executive Order Indicator (NRSI-EV-27) equals 'No', then Permeation Loss (NRSI-EV-57) is required, otherwise it is not allowed.

**Transaction Message Text :** NRSI-EV-BR34a - If Design Based Certification Indicator (NRSI-EV-25) equals 'No', or if Certification Based on CARB Executive Order Indicator (NRSI-EV-27) equals 'No', then Preconditioning Durability Test Indicator (NRSI-EV-41) is required, otherwise it is not allowed.

**Transaction Message Text :** NRSI-EV-BR51a - If Design Based Certification Indicator (NRSI-EV-25) equals 'No', or if Certification Based on CARB Executive Order Indicator (NRSI-EV-27) equals 'No', then Cap Configuration (NRSI-EV-49) is required, otherwise it is not allowed.

**Transaction Message Text :** NRSI-EV-BR56a - If Design Based Certification Indicator (NRSI-EV-25) equals 'No', or if Certification Based on CARB Executive Order Indicator (NRSI-EV-27) equals 'No', then Fuel Tank Surface Area of Tank Test Sample (NRSI-EV-54) is required, otherwise it is not allowed.

**Transaction Message Text :** NRSI-EV-BR57a - If Design Based Certification Indicator (NRSI-EV-25) equals 'No', or if Certification Based on CARB Executive Order Indicator (NRSI-EV-27) equals 'No', then Fuel Tank Surface Area Calculation Method (NRSI-EV-55) is required, otherwise it is not allowed.

**Transaction Message Text :** NRSI-EV-BR26a - When characters 6 through 9 of Evaporative Family Name (NRSI-EV-7) equal 'LINE' or 'TANK', if Design Based Certification Indicator (NRSI-EV-25) equals 'No', or if Certification Based on CARB Executive Order Indicator (NRSI-EV-27) equals 'No', then Preconditioning Period (NRSI-EV-33) is required, otherwise it is not allowed.

**Transaction Message Text :** NRSI-EV-BR27a - When characters 6 through 9 of Evaporative Family Name (NRSI-EV-7) equal 'LINE' or 'TANK', if Design Based Certification Indicator (NRSI-EV-25) equals 'No', or if Certification Based on CARB Executive Order Indicator (NRSI-EV-27) equals 'No', then Test Temperature (NRSI-EV-34) is required, otherwise it is not allowed.

**Transaction Message Text :** NRSI-EV-BR28a - When characters 6 through 9 of Evaporative Family Name (NRSI-EV-7) equal 'LINE' or 'TANK', if Design Based Certification Indicator (NRSI-EV-25) equals 'No', or if Certification Based on CARB Executive Order Indicator (NRSI-EV-27) equals 'No', then Number of Samples Tested (NRSI-EV-35) is required, otherwise it is not allowed.

**Transaction Message Text :** NRSI-EV-BR25a - When characters 6 through 9 of Evaporative Family Name (NRSI-EV-7) equal 'TANK', 'LINE' or 'MDRN', if Design Based Certification Indicator (NRSI-EV-25) equals 'No', or if Certification Based on CARB Executive Order Indicator (NRSI-EV-27) equals 'No', then Test Fuel Type (NRSI-EV-32) is required, otherwise it is not allowed.



# Certification Summary Information (CSI) Report

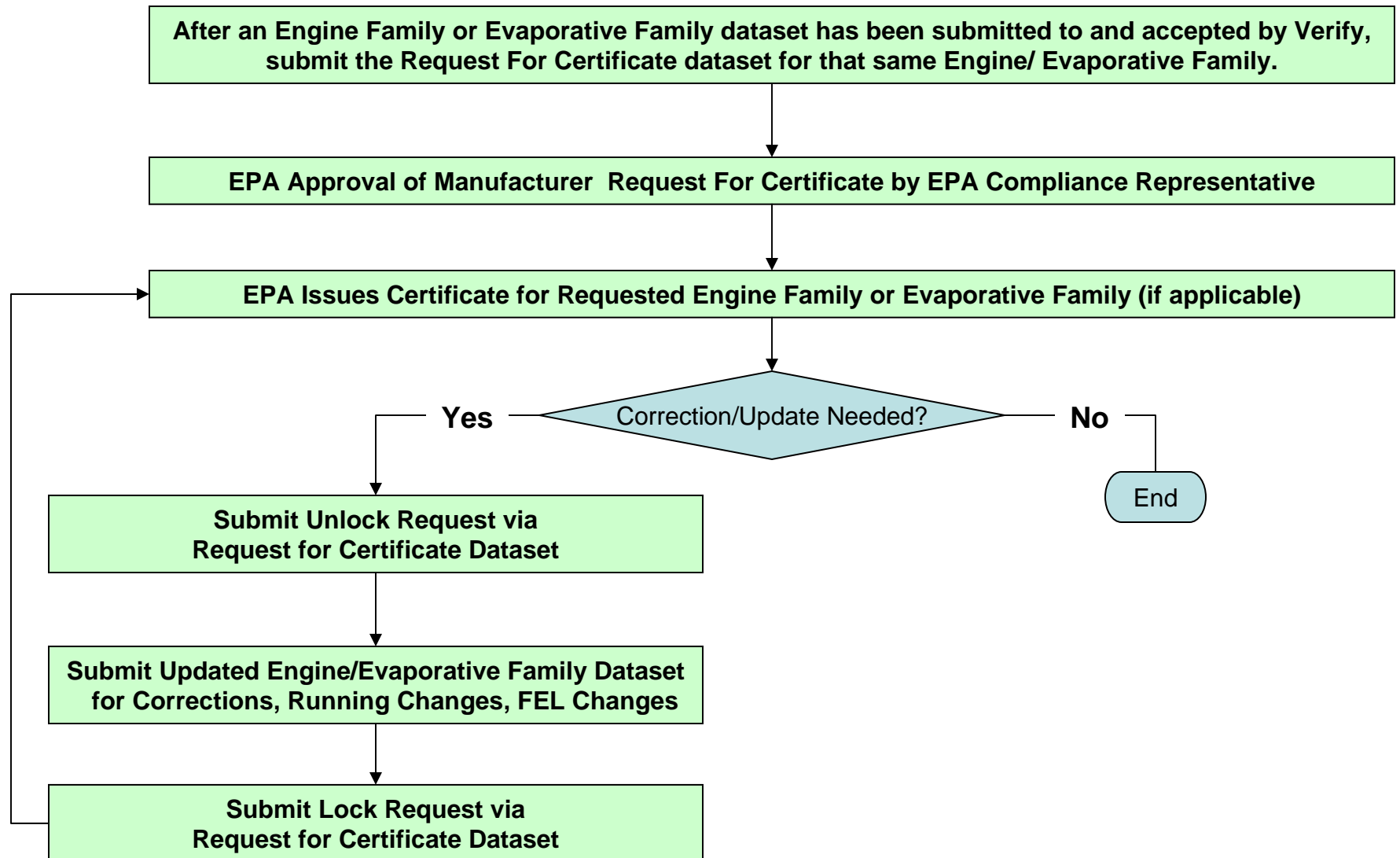
- The CSI report contains all of the details on an engine family or evaporative family:
  - All of the information that is entered by the submitter
  - Lists all documents associated with the engine family or evaporative family
  - All information that is assigned by Verify
  - Verify calculation results
  - Pass/Fail Report

Sample Label or Label Language	2011 EPA Emission Label location.pdf	Warranty Statement	USEPA EMISSION CONTROL WARRANTY STATEMENT (2009).pdf
Delegated Assembly Worksheet	--	Altitude Kit Worksheet	--
Deterioration Factor Report	--	Partially Completed Engines Worksheet	--
Manufacturer's Engine Family Comments	--		
Update/Correction Comments	--		

Certification Test Fuel Justification --

Constituent Name	Constituent Units	Certification Test Result (before Deterioration Factor applied)	Calculated Certification Level	Pass/Fail Indicator
CO	g/KW-hr	200.1	202.3011	Pass
HC (THC)	g/KW-hr	0.67	--	--
NOx	g/KW-hr	0.45	--	--
HC + NOx (THC + NOx)	g/KW-hr	0.67	1.12917	Pass

# Request For Certificate Process - NRSI



# Request For NRCI Certificate Process

After an Engine Family application has been submitted to and accepted by Verify, submit the Request For Certificate dataset for that same Engine Family.

EPA Approval of Manufacturer Request For Certificate by EPA Compliance Reviewer

EPA Issues Certificate for Requested Engine Family (if applicable)

Yes

Correction/Update Needed?

No

End

Submit Updated Engine Family Dataset for Corrections, Running Changes, FEL Changes


Submit Summary Sheet Update or Request for Certificate Dataset

# Request For Certificate Tips

- The Request for Certificate dataset is a *separate* submission from the Engine/Evaporative Family dataset.
- The request for certificate cannot be submitted until the engine family dataset has been submitted to and accepted by Verify.

# My CDX In-Box

- Processing Notifications
  - You will receive a message in your MyCDX In-box after you request a certificate for an engine or evaporative family.
  - Messages are sent to those identified on the maintain manufacturer information section that will alert them when:
    - An EPA certification reviewer changes the status of an engine or evaporative family after the request for certificate is submitted and accepted by Verify.
    - When the certificate is sent for signature.
    - When the certificate is signed.



**U.S. Environmental Protection Agency**

**Inbox - All Messages: SARAZAREMSKI**

[Recent Announcements](#) | [Contact Us](#)

Logged in as, SARAZAREMSKI

[MyCDX](#) > Inbox - All Messages: SARAZAREMSKI

<< Prev Message: 1 to 20 of 234 [Next](#) >>

	All	From	Subject	Date
<input type="checkbox"/>	<input checked="" type="checkbox"/>	Verify Administrator	NRSI Certificate BEPAPNHEQ001-002 has been issued	Mon 8/23/2010 10:11 AM
<input type="checkbox"/>	<input checked="" type="checkbox"/>	Verify Administrator	NRSI Certificate for Engine Family BEPAPNHEQ001 Is Waiting To Be Signed	Thu 8/19/2010 10:47 AM
<input type="checkbox"/>	<input checked="" type="checkbox"/>	Verify Administrator	NRSI Certificate Request received	Thu 8/19/2010 10:46 AM
<input type="checkbox"/>	<input type="checkbox"/>	Verify Administrator	Submission accepted for NRSI Certificate Request Engine Family BEPAPNHEQ001	Thu 8/19/2010 10:46 AM

[About CDX](#)  
[MyCDX](#)  
[Inbox](#)  
[Change Password](#)  
[Frequently Asked Questions](#)

# Sample Certificate




**UNITED STATES ENVIRONMENTAL PROTECTION AGENCY  
2011 MODEL YEAR  
CERTIFICATE OF CONFORMITY  
WITH THE CLEAN AIR ACT OF 1990**

**OFFICE OF TRANSPORTATION  
AND AIR QUALITY  
ANN ARBOR, MICHIGAN 48105**

**Certificate Issued To:** Environmental Protection Agency  
(U.S. Manufacturer or Importer)  
**Certificate Number:** BEPAPMDRN001-003

**Effective Date:**  
08/23/2010  
**Expiration Date:**  
12/31/2011

  
Karl J. Simon, Director  
Compliance and Innovative Strategies Division

**Issue Date:**  
08/23/2010  
**Revision Date:**  
N/A

**Manufacturer:** Environmental Protection Agency  
**Evaporative Family:** BEPAPMDRN001  
**Category:** EVAP\_FAMILY  
**Certificate Number:** BEPAPMDRN001-003  
**Useful Life:** 5 Years  
**Applicable Regulation:** Part 1060  
**Applicable Emission Standard:**

Pursuant to Section 213 of the Clean Air Act (42 U.S.C. section 7547), 40 CFR Part 90, 40 CFR Part 1054, 40 CFR Part 1045 or 40 CFR Part 1060 and subject to the terms and conditions prescribed in those provisions, this certificate of conformity is hereby issued for the diurnal systems, more fully described in the documentation required by 40 CFR Part 90, 40 CFR Part 1054, 40 CFR Part 1045 or 40 CFR Part 1060 and produced in the stated model year.

This certificate of conformity covers only the diurnal systems which conform in all material respects to the design specifications that applied to those components described in the documentation required by 40 CFR Part 90, 40 CFR Part 1054, 40 CFR Part 1045 or 40 CFR Part 1060 and which are produced during the model year stated on this certificate of the said manufacturer, as defined in 40 CFR Part 90, 40 CFR Part 1054, 40 CFR Part 1045 or 40 CFR Part 1060. This certificate of conformity does not cover diurnal systems imported prior to the effective date of the certificate.

It is a term of this certificate that the manufacturer shall consent to all inspections described in 40 CFR Part 90.56, 40 CFR Part 90.506, or 40 CFR Part 1068.20 and authorized in a warrant or court order. Failure to comply with the requirements of such a warrant or court order may lead to revocation, suspension or annulment of this certificate for reasons specified in 40 CFR Part 90, 40 CFR Part 1054, 40 CFR Part 1045 or 40 CFR Part 1060. It is also a term of this certificate that this certificate may be revoked, suspended, annulled and void *ipso iure* for other reasons specified in 40 CFR Part 90, 40 CFR Part 1054, 40 CFR Part 1045 or 40 CFR Part 1060.

This certificate does not cover diurnal systems sold, offered for sale, or introduced, or delivered for introduction, into commerce in the U.S. prior to the effective date of the certificate.

**DRAFT**

# System Administration Links

- Telephone - (888) 890-1995
  - Option 4 for Verify Questions
- E-mail
  - [verifyhelp@csc.com](mailto:verifyhelp@csc.com) for technical questions regarding data or file acceptance
  - [helpdesk@epacdx.net](mailto:helpdesk@epacdx.net) for help with your CDX registration (user ID/password) questions
- Questions regarding the Nonroad SI/CI
  - contact your Certification Reviewer