

Verify Light-Duty GHG Updates

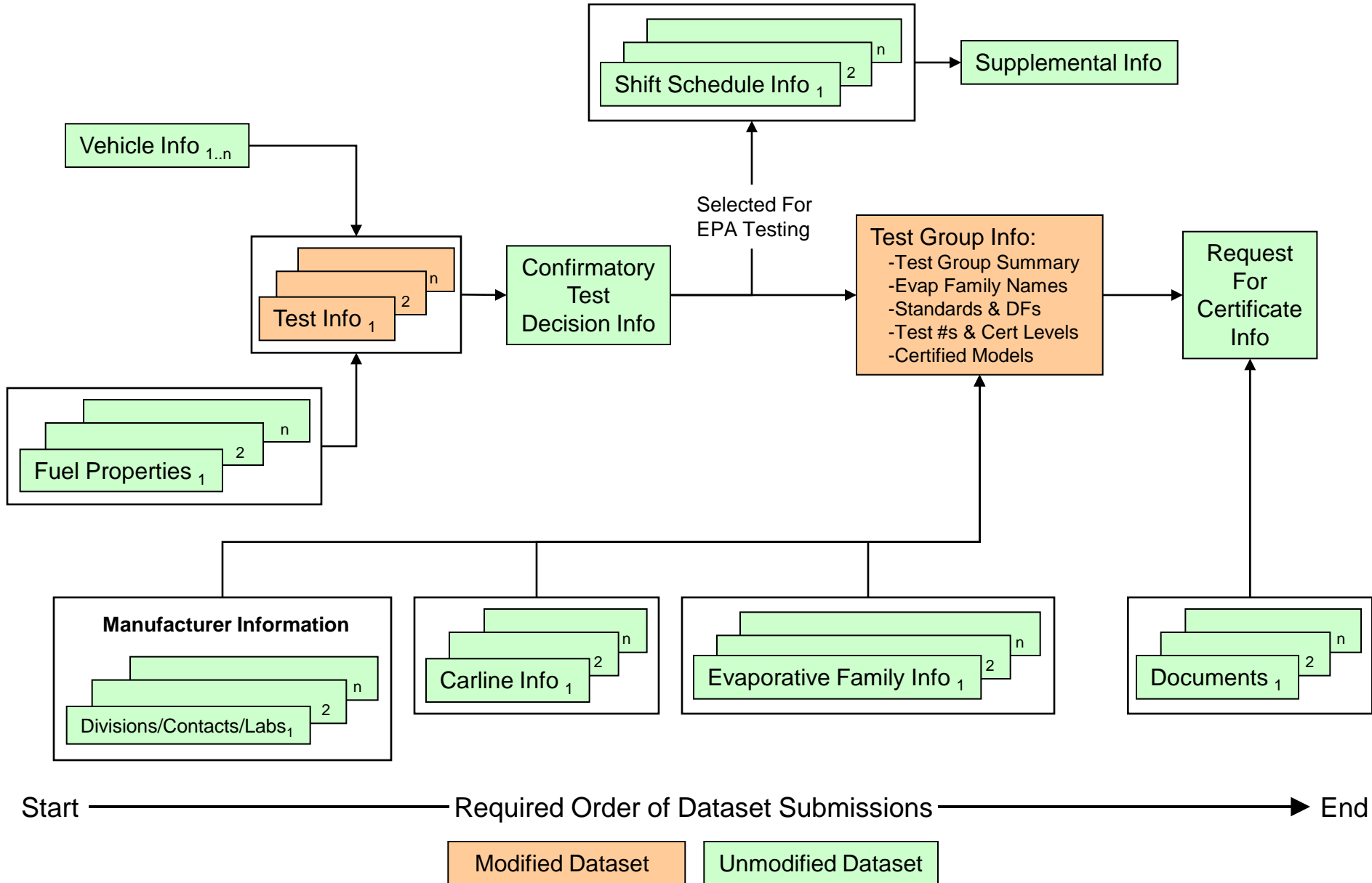
August 23, 2011



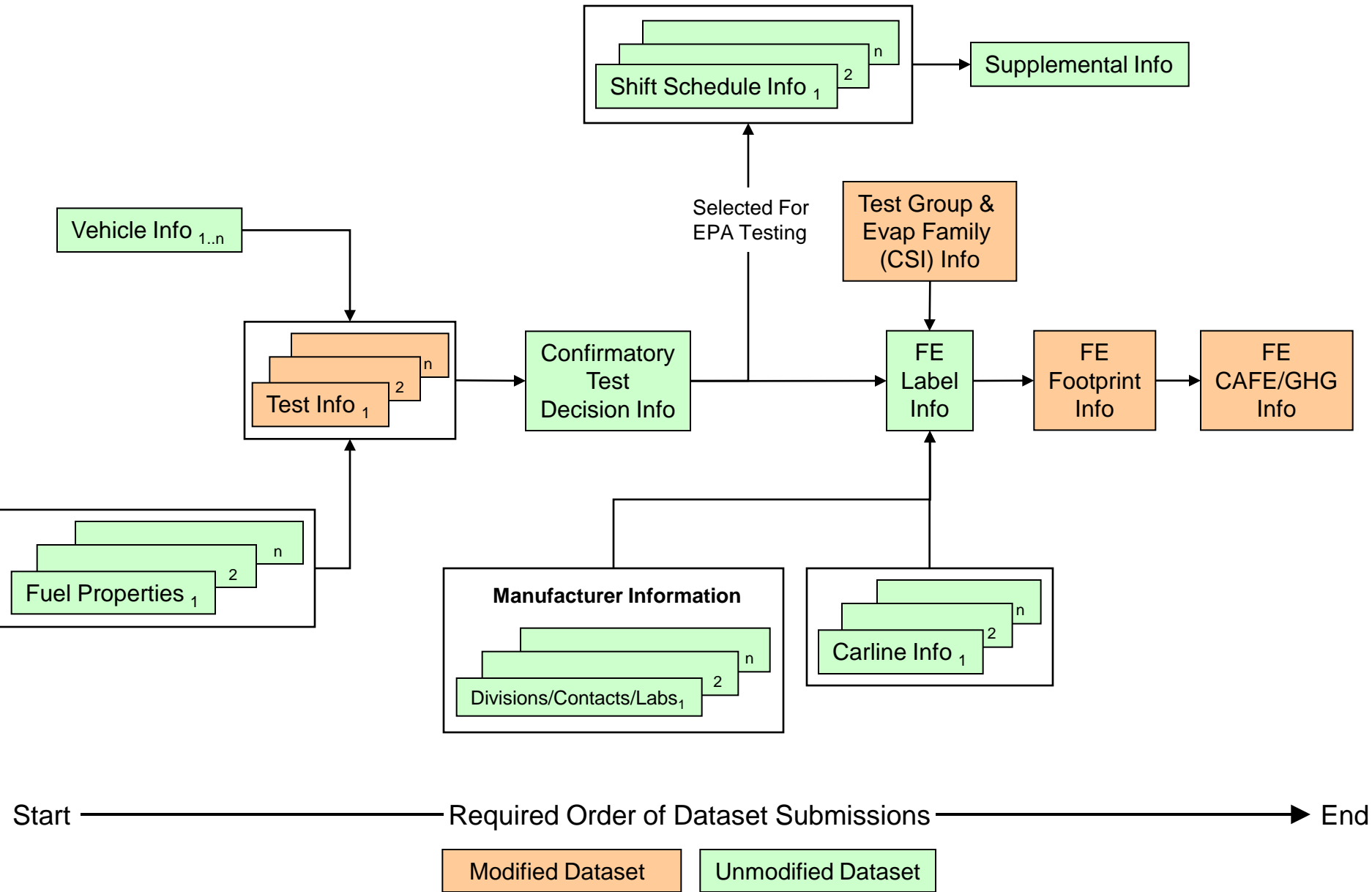
Verify Light-Duty GHG Draft Deployment Schedule

- September 2010: Changes to Request For Certificate Dataset and Certificate Templates
- November 2010: Changes to Model Year 2010 CAFE Dataset
- May 2011: Changes to Confirmatory Testing, Certification, FE Label, & IUVP Datasets
- October 2011: Changes to CREE/Opt-CREE Calculations in Test Information and Test Group, Footprint, and Model Year 2011/2012+ CAFE/GHG Datasets

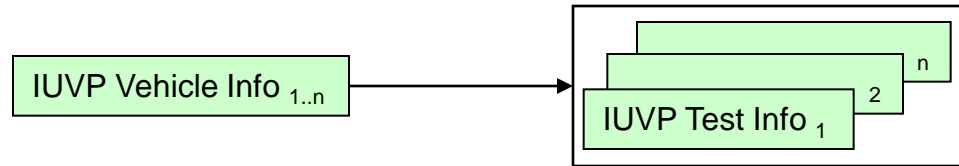
Verify Light-Duty Certification Dataset Submission Process GHG Updates (08/23/11)



Verify Light-Duty Fuel Economy Dataset Submission Process GHG Updates (08/23/11)



Verify Light-Duty IUVP Dataset Submission Process GHG Updates (08/23/11)



Start ————— Required Order of Dataset Submissions —————> End

Modified Dataset

Unmodified Dataset

Changes to Test Information Dataset

- Manufacturers will provide CREE and/or Opt-CREE values for MY 2012+ City & Highway tests and Charge-Depleting UDDS & Charge-Depleting Highway tests
- Verify will calculate CREE and/or Opt-CREE (without DFs) for MY 2012+ City and Highway tests
 - Verify will not calculate CREE and/or Opt-CREE values for MY 2012+ Charge-Depleting UDDS and Charge-Depleting Highway tests at this time

Changes to Test Group Dataset

- Manufacturers will provide MY 2012+ City & Highway CREE and/or Opt-CREE DFs for applicable fuels
- Manufacturers will enter a value of 999.9999 for CREE/Opt-CREE standards
- Verify will apply manufacturer-provided CREE/Opt-CREE DFs to Verify-calculated CREE/Opt-CREE values from Test Information for City & Highway tests
 - Verify will apply manufacturer-provided CREE/Opt-CREE DFs to manufacturer-provided CREE/Opt-CREE values for Charge-Depleting tests from Test Information
- Verify will not determine Pass/Fail for CREE/Opt-CREE

New Footprint Dataset

- The Verify Footprint information will now be collected in a stand-alone dataset
 - Footprint information has already been removed from the FE Label dataset
- All Footprints must be entered prior to submission of the CAFE/GHG dataset
 - Footprints will be entered for each unique Carline
- Footprint dataset corrections will not be a complete “Replace” like all the other light-duty Verify datasets
 - Only need to include footprint index of footprints that need to be updated

Changes to Verify CAFE Dataset

- The CAFE dataset is being restructured for MY 2011 and modified for MY 2012+ to collect both CAFE and GHG information
 - New data elements
 - New business rules
- Verify CAFE/GHG calculations will be part of GHG Phase 2

Draft Manufacturer Testing Schedule

- November 2010: Testing of Model Year 2010 CAFE
- March 2011: Testing of Confirmatory Test & Certification
- April 2011: Testing of FE Label & IUVP
- August/September 2011: Testing of CREE/Opt-CREE Calculations in Test Information and Test Group, Footprint, and Model Year 2011/2012 CAFE/GHG Datasets

Verify Manufacturer Testing Information

- If interested in participating in Verify testing, send an email to verifyhelp@epa.gov with the following information:
 - Email Subject: Light-Duty GHG System Testing
 - Submit your completed user registration form found at <http://epa.gov/otaq/verify/documents/user-info20100324.xls>
 - Submit one registration form for each Manufacturer code
- Contact Sandra Somoza if you have questions about the upcoming Light-Duty Verify system testing
 - somoza.sandra@epa.gov (734-214-4704)
- Join the Verify Listserve
- Keep an eye on the Verify website:
 - www.epa.gov/otaq/verify

Verify Manufacturer Testing Information

- Manufacturers will be able to test from August 29, 2011 to September 23, 2011
 - <https://test.epacdx.net/SSL/cdx/login.asp>
- Testing Issues Webinars will be held on Tuesdays and Thursdays at 11:00 AM
 - The first Testing Issues Webinar will be Thursday, September 1, 2011
 - Manufacturers should submit Issue Trackers no later than 3:00 PM the day before a scheduled Webinar to verifyhelp@epa.gov
 - Testing Webinars will be cancelled if no manufacturer issue trackers are received by 3:00 PM the day before the Webinar

Verify User Test Account Registration Form

A	B	C	D	E	F	G
1	Identification and Authorization Information for Users of EPA Verify Data Submission System					
2	Enter the information in the fields as indicated.			Version 3e		
3	Do not change the font, formatting, or print specifications.			2010-Mar-24		
4	Print the second and any needed subsequent pages and send them along with the signed user authorization letter by US mail or a package delivery service to the address at right.			Verify Team OAR/OTAQ/CISD US EPA, NVFEL 2000 Traverwood Drive Ann Arbor, MI 48105		
5	The user authorization letter should be on your company's letterhead and signed by the company approving official. The letter must include the 3-character manufacturer code assigned to your company by EPA and must list all users who are authorized to submit data for this manufacturer code.					
6	If space for additional registrants is needed create another similar file.					
7	For additional information, see http://www.epa.gov/otaq/verify/setup.htm					
8	Place an "X" in the column to the left of the Verify module the user is authorized to use.					
9	Manufacturer code and date need only be entered for the first user. They will be copied to the others.					
10	See an example at the bottom of this worksheet					
11						
12	EPA Manufacturer Code (3-character code):			Date (yyyy-mm-dd):		
13						
14	Authorized User #1					
15	Contact Information					
16	Prefix (Dr./Mr./Mrs./Ms)			Mailing Address 1		
17	First name			Mailing Address 2		
18	Last Name			City		
19	Suffix (Jr./Sr./III/IV)			State		
20	Organization Name			Zip/Postal Code		
21	E-mail			Country		
22	Phone Number					
23						
24						
25	Compliance Module Authorizations					
26	X	LDV Certification		X	Upload Compliance Documents	
27		MC/ATV Engine Certification		X	LDV Compliance	
28		NR Large Spark Ignited Eng. Certification		X	View Manufacturer Information	
29		Locomotive Certification			On-Highway Heavy-Duty In-Use Testing	
30		NR Small Spark Ignited Eng. Certification			Nonroad Confirmatory Testing	
31		Marine Spark Ignited Eng. Certification		X	Edit Manufacturer Information	
32		NR Compression Ignition Certification				
33		NR SI Evap. Components/Equip. Cert.				
34						
35						

Verify Issue Tracker

Manufacturer / EPA Testing Issues

Project: Verify TDD 2-2 GHG Phase 1

Release: 9.0

Testing Environment:

Testing Date(s):

Key	Manufacturer Originator Name	Mfr Originator Organization	Mfr Originator Email	EPA/Mfr Test Date Time	Industry Sector	Location	Summary	Description	Issue Type	Priority	Transaction ID	Mfr Comments	EPA Comments	Status	Resolution
JIRA Number (not required CSC will assign)	Free text box for Mfr name. If being reported by EPA or CSC user, leave this blank and just use the "Reporter" field for a drop-down list of JIRA users.	Mfrs company name. Not needed for issues found by EPA or CSC.	Mfrs email only. Not needed for issues found by EPA or CSC.	Date and time this issue was found during EPA/Mfr testing. Not a requested field for CSC users.	The industry or submission type that this issue was found in (e.g. SSI Engine Family).	The breadcrumb trail for where this issue was found, or at a minimum, specify the applicable tab.	Provide a brief statement of what the issue is (one sentence or less).	Provide a detailed description of the issue.	Specify if this is a "Bug" or an "Enhancement Request."	Specify whether this issue is: Trivial, Minor, Major, Critical or Blocker	The CDX Transaction ID on which this issue was discovered. This is not a CSC user required field.	Additional comments from Mfrs. only, based on feedback from EPA/Mfr testing.	Additional comments from EPA only, based on feedback from EPA/Mfr testing.	All new issues should be in the "Open" status	All new issues should have their resolution as "Unresolved."