

Verify Light-Duty GHG & New Technology Updates

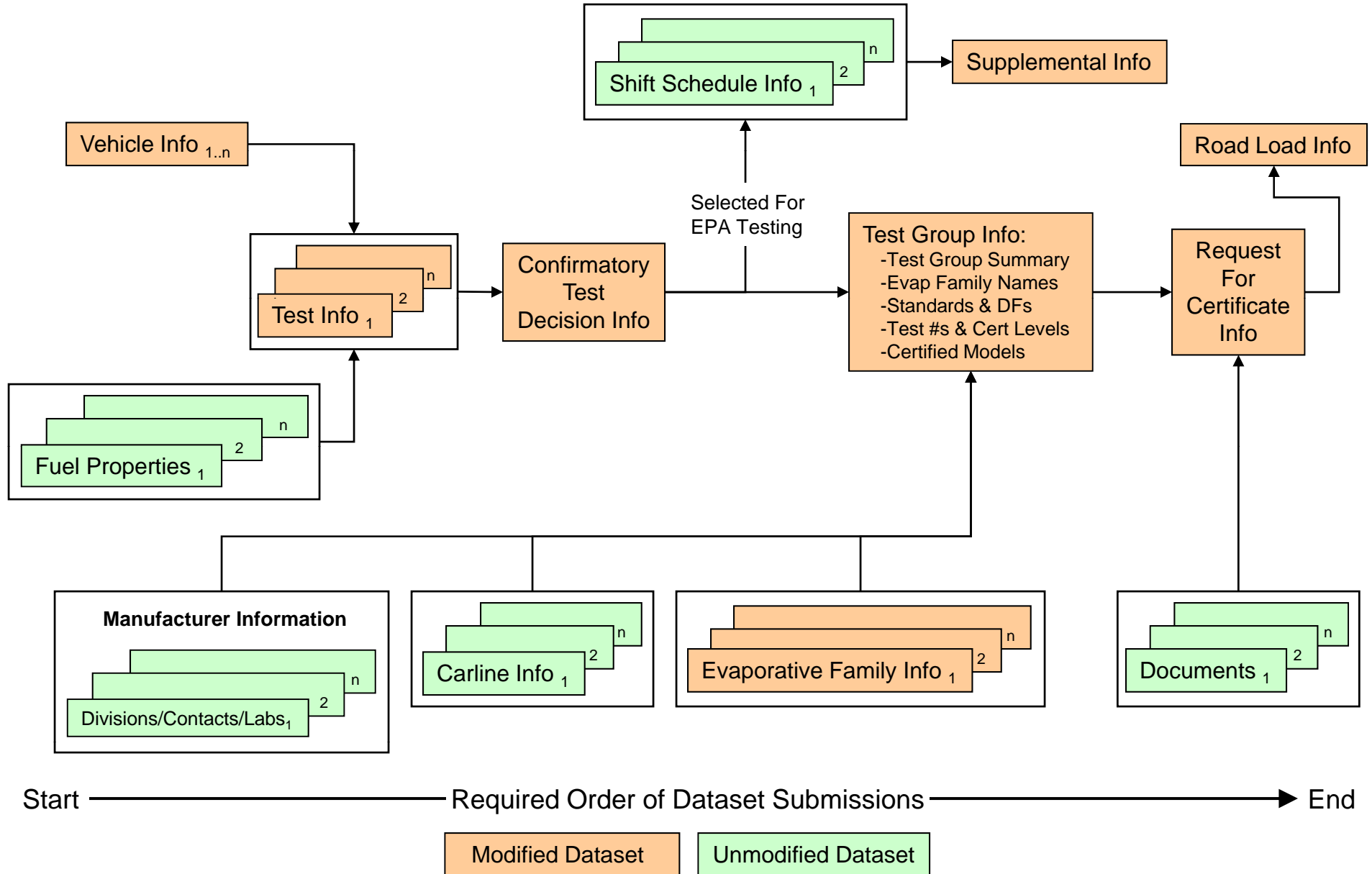
March 1, 2011



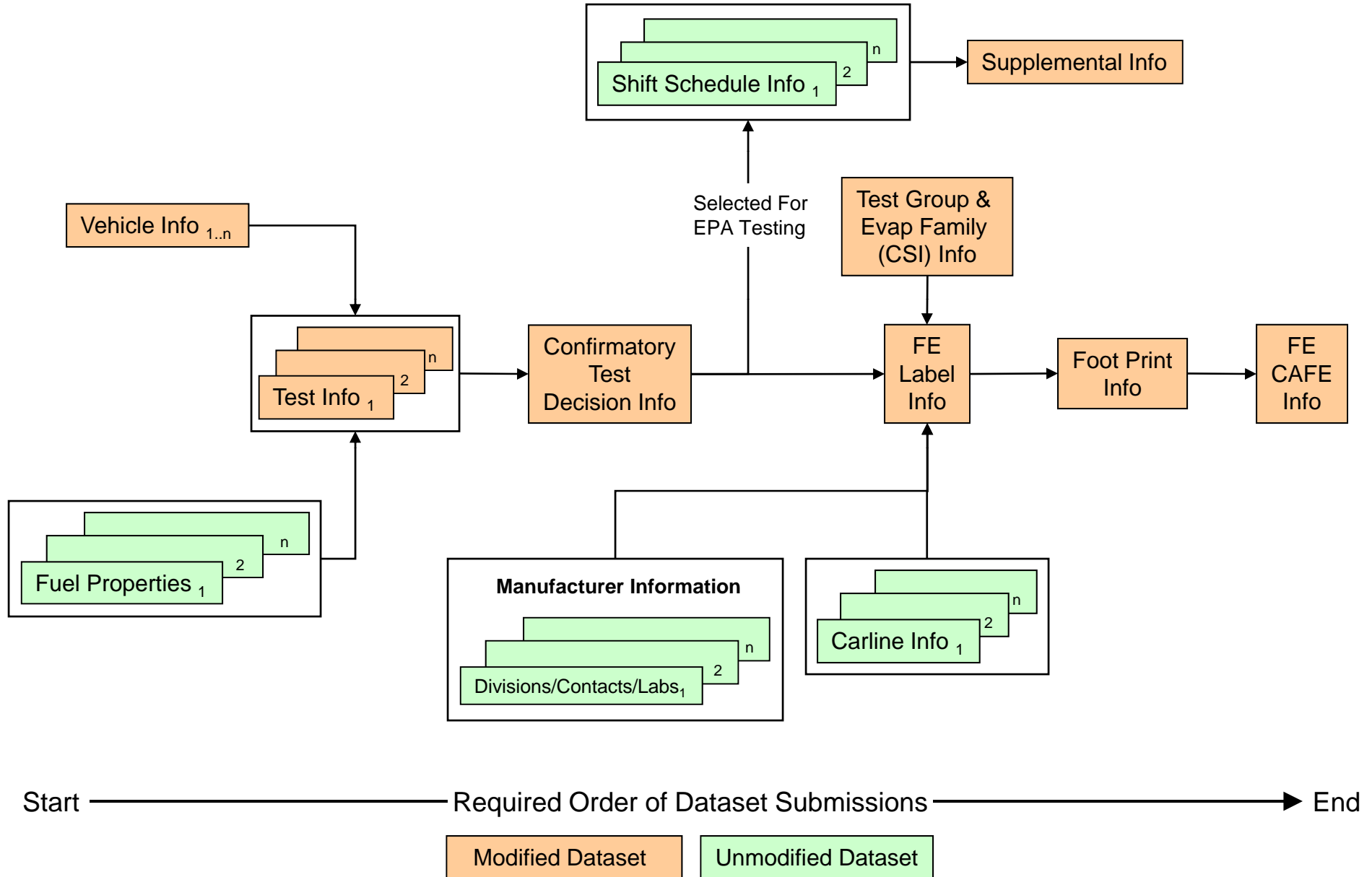
Verify Light-Duty GHG & New Technology Updates Draft Deployment Schedule

- September 2010: Changes to Request For Certificate Dataset and Certificate Templates
- November 2010: Changes to Model Year 2010 CAFE Dataset
- May 2011: Changes to Confirmatory Testing, Certification, FE Label, & IUVP Datasets
- September 2011: Changes to Model Year 2011/2012 CAFE, Footprint, and Road Load Datasets

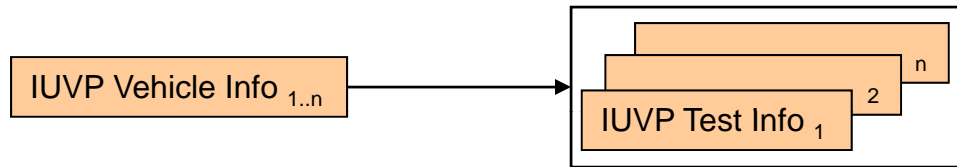
Verify Light-Duty Certification Dataset Submission Process GHG & New Technology Modifications (03/01/11)



Verify Light-Duty Fuel Economy Dataset Submission Process GHG & New Technology Modifications (03/01/11)



Verify Light-Duty IUVP Dataset Submission Process
GHG & New Technology Modifications (11/17/10)



Start ————— Required Order of Dataset Submissions —————> End

Modified Dataset

Unmodified Dataset

Verify Light-Duty GHG & New Technology Updates Draft Manufacturer Testing Schedule

- November 2010: Testing of Model Year 2010 CAFE
- March 2011: Testing of Confirmatory Test & Certification
- April 2011: Testing of FE Label & IUVP
- July 2011: Testing of Model Year 2011/2012 CAFE, Footprint & Road Load

Verify Manufacturer Testing Information

- If interested in participating in Verify testing, send an email to verifyhelp@epa.gov with the following information:
 - Email Subject: Light-Duty GHG System Testing
 - Submit your completed user registration form found at <http://epa.gov/otaq/verify/documents/user-info20100324.xls>
 - Submit _{one reg} istration form for each Manufacturer code
- Contact Sandra Somoza if you have questions about the upcoming Light-Duty Verify system testing
 - somoza.sandra@epa.gov (734-214-4704)
- Join the Verify Listserve
- Keep an eye on the Verify website:
 - www.epa.gov/otaq/verify

Verify User Test Account Registration Form

A	B	C	D	E	F	G
1	Identification and Authorization Information for Users of EPA Verify Data Submission System					
2	Enter the information in the fields as indicated.			Version 3e		
3	Do not change the font, formatting, or print specifications.			2010-Mar-24		
4	Print the second and any needed subsequent pages and send them along with the signed user authorization letter by US mail or a package delivery service to the address at right.			Verify Team OAR/OTAQ/CISD US EPA, NVFEL 2000 Traverwood Drive Ann Arbor, MI 48105		
5	The user authorization letter should be on your company's letterhead and signed by the company approving official. The letter must include the 3-character manufacturer code assigned to your company by EPA and must list all users who are authorized to submit data for this manufacturer code.					
6	If space for additional registrants is needed create another similar file.					
7	For additional information, see http://www.epa.gov/otaq/verify/setup.htm					
8	Place an "X" in the column to the left of the Verify module the user is authorized to use.					
9	Manufacturer code and date need only be entered for the first user. They will be copied to the others.					
10	See an example at the bottom of this worksheet					
11						
12	EPA Manufacturer Code			Date (yyyy-mm-dd):		
13	(3-character code):					
14	Authorized User #1					
15	Contact Information					
16	Prefix (Dr./Mr./Mrs./Ms)			Mailing Address 1		
17	First name			Mailing Address 2		
18	Last Name			City		
19	Suffix (Jr./Sr./III/IV)			State		
20	Organization Name			Zip/Postal Code		
21	E-mail			Country		
22	Phone Number					
23						
24						
25	Compliance Module Authorizations					
26	X	LDV Certification		X	Upload Compliance Documents	
27		MC/ATV Engine Certification		X	LDV Compliance	
28		NR Large Spark Ignited Eng. Certification		X	View Manufacturer Information	
29		Locomotive Certification			On-Highway Heavy-Duty In-Use Testing	
30		NR Small Spark Ignited Eng. Certification			Nonroad Confirmatory Testing	
31		Marine Spark Ignited Eng. Certification		X	Edit Manufacturer Information	
32		NR Compression Ignition Certification				
33		NR SI Evap. Components/Equip. Cert.				
34						
35						