



UNITED STATES ENVIRONMENTAL PROTECTION AGENCY

REGION 5
77 WEST JACKSON BOULEVARD
CHICAGO, IL 60604-3590

COPY

JAN 14 2008

REPLY TO THE ATTENTION OF MAILCODE:
WU-16J

CERTIFIED MAIL 7001 0320 0006 0186 8251
RETURN RECEIPT REQUESTED

Victoria Raske
Tribal Historic Preservation Officer
Grand Portage Band of Chippewa
P.O. Box 428
Grand Portage, Minnesota 55605

Re: National Historic Preservation Act Compliance
Kennecott Eagle Minerals Company; Eagle Mine Project; Marquette County,
Michigan; U.S. EPA Permit Application Number MI-103-5W20-0002

Dear Ms. Raske:

The U.S. Environmental Protection Agency (EPA) is in the process of reviewing a permit application and all related material in order to prepare a draft federal Underground Injection Control permit decision for the underground discharge of treated industrial waste water. This discharge system is proposed to be part of the above referenced project that is shown on the enclosed maps. The purpose of this letter is to request information about any potential traditional cultural or historical properties that may be eligible for protection under the National Historic Preservation Act of 1966 that are located within the project area.

The Keweenaw Bay Indian Community's (KBIC) Tribal Historic Preservation Officer has indicated that there may be traditional cultural properties in the proposed project area that are relevant to the Ojibwa Nation. EPA has agreed to consult with KBIC about this issue. We would like to know if your Band has a traditional religious or cultural significance attached to a historic property that may be affected by the project and therefore would be interested in consultation with EPA.

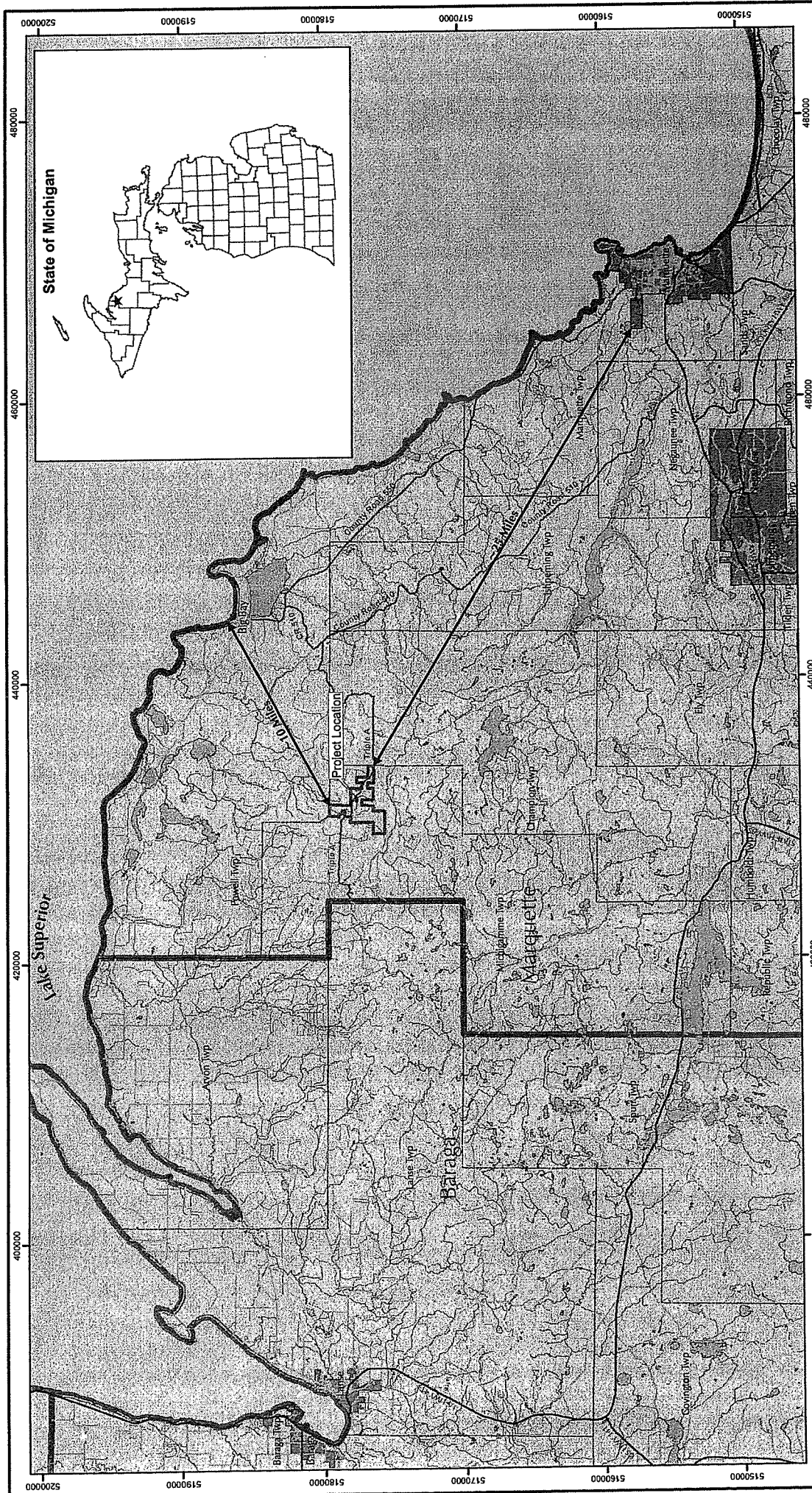
Please contact me within 30 days if you may have any information to satisfy this request. If you have any questions or concerns please feel free to contact me or Ross Micham of my staff at (312) 886-4237, or by email at micham.ross@epa.gov.

Sincerely yours,

A handwritten signature in cursive that reads "Tinka G. Hyde" with "FOR" written below it.

Tinka G. Hyde
Acting Director, Water Division

Enclosures



State of Michigan



Kennebecott
Eagle Minerals

FIGURE 2-1
PROJECT LOCATION

DATE: FEB. 08
DATE: FEB. 08
DATE: FEB. 08

Checked by: JOST
Approved by: SVD1

Scale: 1:50,000
Date: FEBRUARY, 2008

Prepared by: Foth & Van Dyke
By: DAT
04W018

REVISED	DATE	BY	DESCRIPTION

LEGEND

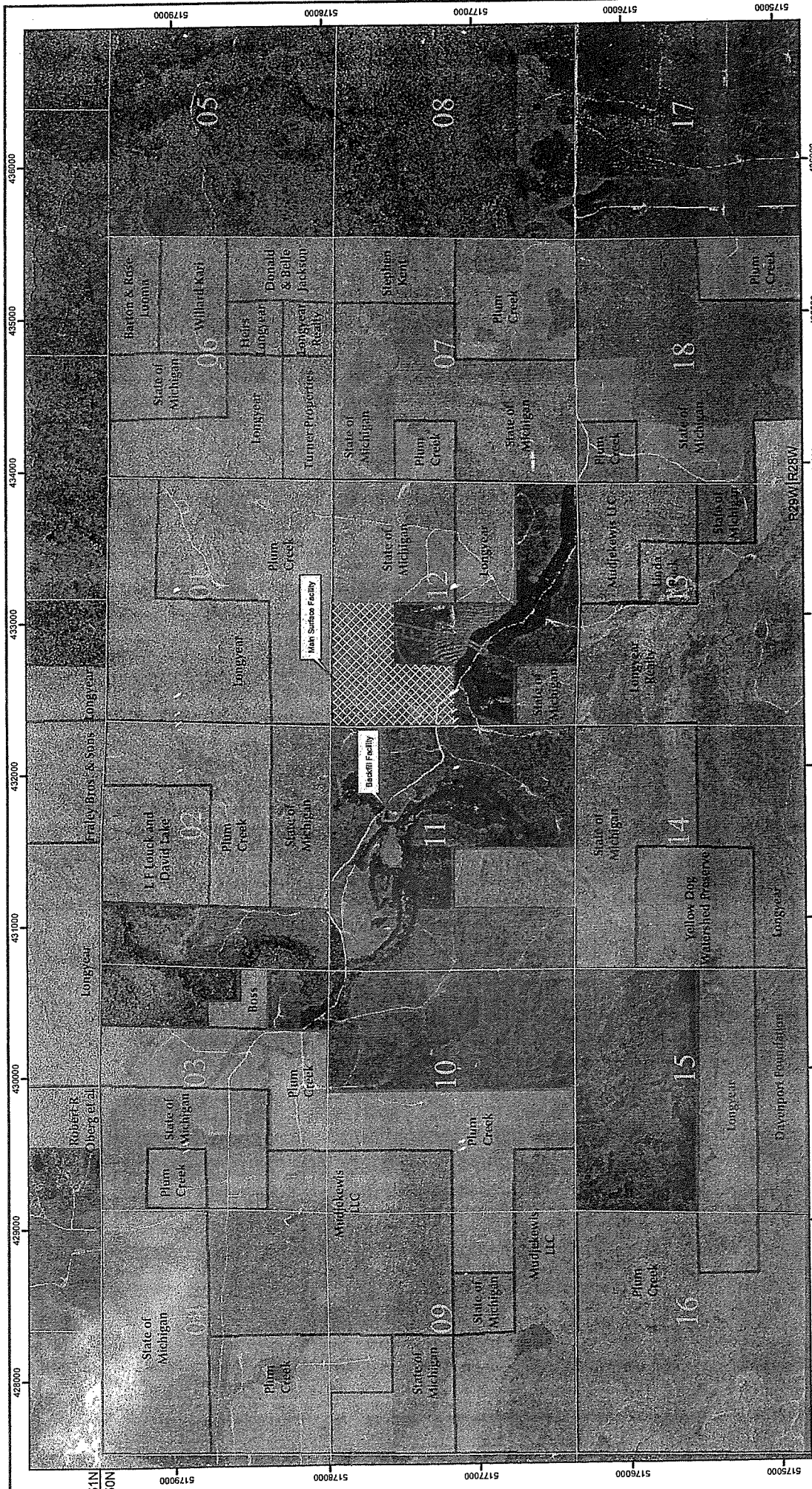
- Counties
- Minor Civil Divisions
- Kennebecott Surface Ownership
- Lakes and Rivers
- Highways
 - Major Roads
 - Minor Roads

N

Foth & Van Dyke

NOTES

1. Surface property boundary as of November 18, 2004 supplied by Kennebecott Via Goldier & Associates Inc., August, 2005.
2. Horizontal datum based on NAD 83/94.
3. All base information downloaded from Michigan Center of Geographic Information (<http://www.michigan.gov/cgi>).
4. Site Location - Project Site within Sections 11 & 12, T50N, R29W, Town of Marquette, Marquette County, Michigan.



NOTES

1. Surface Rights Boundary, Ore Body and Orthorectography supplied by Kennecott via Gaskoy Associates Inc., August, 2005.
2. Horizontal datum based on NAD 83/94.
3. Property Ownership based on UTM Zone 16. Current Ownership supplied from Kennecott and Callison Engineering.
4. Site Localizer - Project Site within Sections 11 & 12, T50N, R29W, Town of Michiganame, Marquette County, Michigan.

LEGEND

- Eagle Ore Body
- Location of Surface Facilities
- Kennecott Surface Ownership
- Section Lines
- State Leased Area

Kenecott
Eagle Minerals

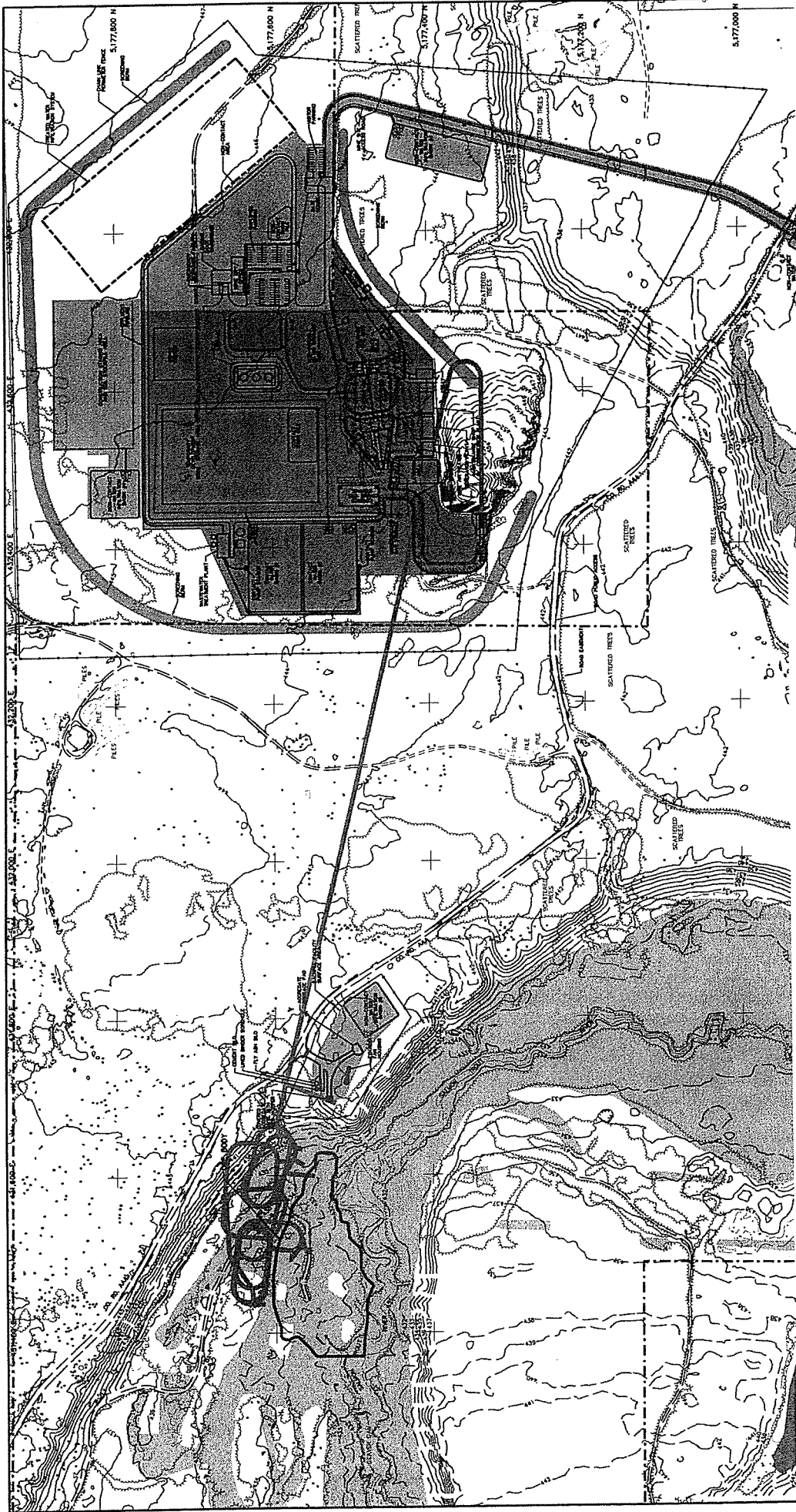
FIGURE 2-4
PROJECT SURFACE OWNERSHIP

Prepared by: Foth & Van Dyke Date: FEBRUARY, 2008

REVISED	DATE	BY	DESCRIPTION

CHECKED BY: JOS1 DATE: FEB. 08
 APPROVED BY: SVD1 DATE: FEB. 08

Scale: 1" = 300' Date: FEBRUARY, 2008
 Prepared by: Foth & Van Dyke By: DAT 04W018



NOTES:

1. SHEDDING, WETLAND, AND DIMENSIONAL DATA SUPPLIED BY ARCHITECTS CONCERNING DATE OF PHOTOGRAPHY: JUNE 7, 2006.
2. THE FINAL DATA AREA ADAPTED FROM MONITOR ENGINEERING, INC. SURVEY BY MONITOR ENGINEERING, INC. APRIL 7, 2006.
3. SURFACE WETLANDS ADAPTED FROM MONITOR ENGINEERING, INC. APRIL 7, 2006.
4. CONTOUR INTERVAL BASED ON NORTH AMERICAN VERTICAL DATUM OF 1988. HORIZONTAL COORDINATES ADAPTED TO NAD 83.
5. ORE BODY, WETLAND BOUNDARY, EXCESS SOIL BOTTOM, DRAINAGE DITCH, AND PLANNING FENCE SUPPLIED BY GOLDBERG & ASSOCIATES, INC. AUGUST 1, 2006.
6. THE LOCATION, SHAPE, SIZE, AND SECTION OF THE ORE BODY, WETLAND, PLANNING FENCE, AND ACCESS ROAD APPROXIMATE IN THIS MAP.

LEGEND

EXISTING ELEV. CONTOUR (1 METER INTERVAL)	ORE BODY
IMPROVED ROAD	CULVERT
TREE LINE	EROSION MAT OR REPAIR
WETLAND BOUNDARY AS OF NOVEMBER 14, 2004	DRAINAGE DITCH AND FLOW DIRECTION
WETLAND BOUNDARY AS OF APRIL 7, 2006	EXCESS SOIL BOTTOM (FINAL LOCATION AND SIZE BASED UPON ACTUAL EXCAVATED SOIL QUANTITIES)
MONITOR ENGINEERING, INC. SURVEY BOUNDARY	NON-CONTACT AREA
MONITOR ENGINEERING, INC. SURVEY BOUNDARY	MAIN OPERATIONS AREA
PLANNING FENCE	CONTIGUOUS LINED OPERATIONS AREA
APPROXIMATE IN THIS MAP	WETLAND BOUNDARY FROM US FISH AND WILDLIFE WETLAND INVENTORY MAP

FOOT & VAN DYKE

REVISED	DATE	BY	DESCRIPTION

CHECKED BY: JOSI DATE: FEB. '06
 APPROVED BY: SVDI DATE: FEB. '06

Prepared By: Foth & Van Dyke | By: C.G.B. | 04/10/08