



# Eastern Diversified Metals Superfund Site

## Schuylkill County, Pennsylvania



### - EPA Continues to Oversee Cleanup Efforts -

**U.S. Environmental Protection Agency Region 3 Community Update—March 2006**

The United States Environmental Protection Agency (EPA) is overseeing ongoing cleanup activities at the Eastern Diversified Metals (EDM) Superfund Site. The purpose of this fact sheet is to provide the community with an update on the cleanup process. (***Bolded and italicized*** words are defined on page 3.)

#### Current Status of Cleanup Efforts

In December 2004, after several consecutive short-term (90-day) permits, EPA was granted court-appointed long-term (permanent) permission to enter the Site property. This allowed EPA and the ***Potentially Responsible Parties (PRPs)*** to conduct field work related to the ***Remedial Design*** for the EDM Site.

EPA is overseeing the preparations for the selected long-term cleanup remedy. The design is estimated to be completed in spring 2006.

EPA is also overseeing the PRP’s current, ongoing cleanup efforts, which include:

- Collecting and treating ***leachate*** from the “fluff pile;”
- Obtaining additional soil, groundwater, and surface water samples to further refine the extent of contamination; and
- Designing the fluff pile’s multi-layered protective cap.

Based on soil sampling results, the area of concern has been expanded to include the adjacent property where the former EDM warehouse was located. The PRPs, with EPA oversight, have removed contaminated soils and isolated pockets of fluff contamination from the parking areas, railroad spur, and other areas next to the former EDM facility. Work began in November 2005 and was completed in December 2005.



#### Next Steps

The ***Remedial Action*** phase of the cleanup will directly follow the Remedial Design phase. Once the Remedial Action phase begins, construction of the impermeable cap is expected to take approximately two years to complete. The cleanup activities performed during the Remedial Action phase will include:

- Isolating and containing contaminants within the fluff pile with a multi-layered impermeable cap;
- Reshaping and covering the fluff pile with thick plastic liners, which will prevent water from getting into the fluff pile;
- Installing a drainage system over both liners to divert water off the cap and into designated drainage ditches;
- Adding about two-feet of soil and thick grassy vegetation on top of the cap as an additional layer of protection; and
- Monitoring landfill gas, and if warranted, installing a gas collection and treatment system.

The cleanup activities will also include the current, ongoing management of storm water runoff, groundwater monitoring, and security controls. If you would like more details on the final selected remedy, the ***Record of Decision (ROD)*** is available for review. A link to the ROD is provided on EPA’s EDM website, which is listed on page 3.



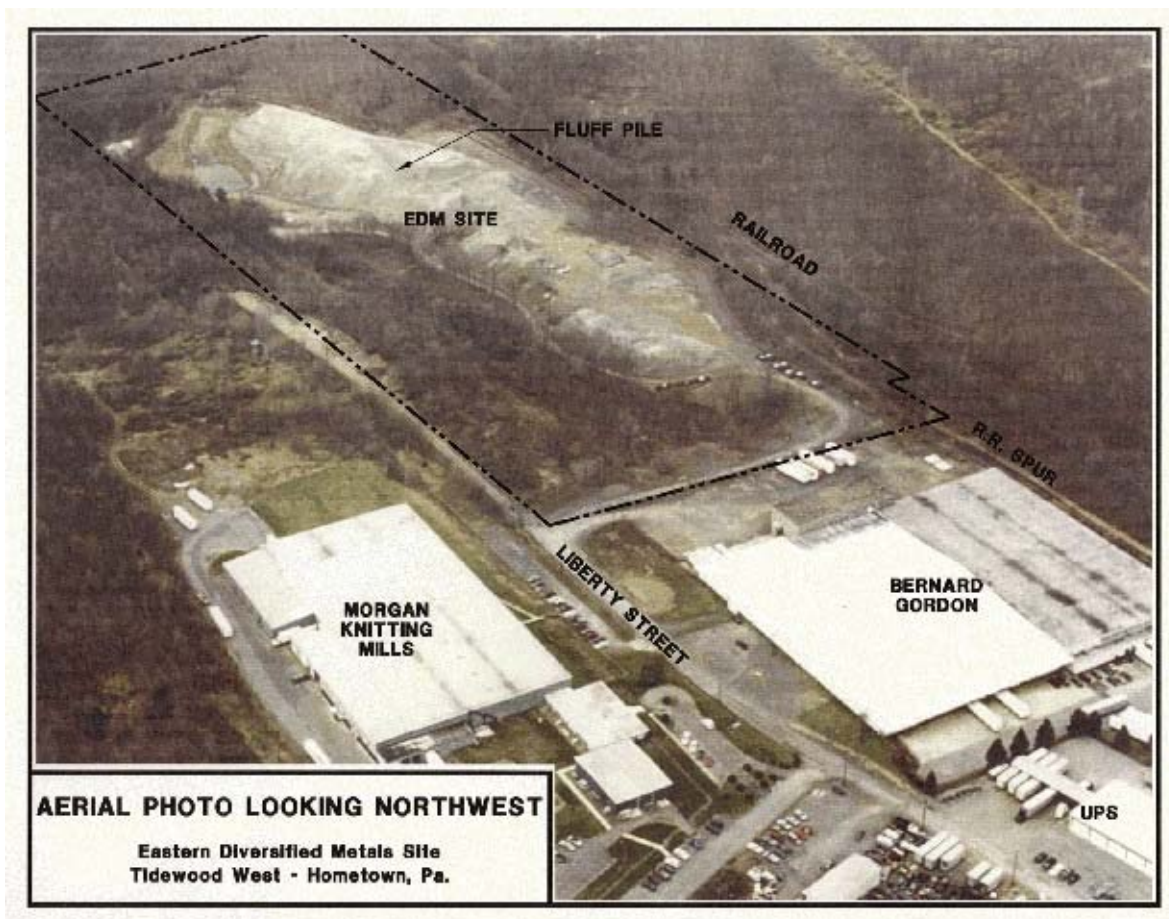
## Next Steps (continued)

“Next Steps” also include a change, or *Explanation of Significant Differences (ESD)*, to the 2001 ROD.

The ESD is a document that explains a change to the original cleanup plan. The ROD originally intended to have, at most, about 4- to 6-acres of land on the Site available for potential redevelopment. However, soil samples collected during the Remedial Design phase show additional areas where contamination was detected. As a result, the proposed acreage mentioned in the ROD will no longer be available for redevelopment. Instead, it will be needed to help ensure that the contamination and fluff are adequately consolidated within the Site property. When the ESD is completed, EPA will publish a Public Notice in the local newspaper to announce the document and its availability for public review.

## Background

The Eastern Diversified Metals (EDM) Superfund Site is a former wire recycling facility. From 1966 until 1977, the now bankrupt EDM Corporation reclaimed copper and aluminum from wire and cable. During operations, the company disposed of approximately 350 million pounds of insulation material (plastic stripping) commonly called “fluff” in an open pile. The fluff contained elevated levels of *lead, bis (2-ethylhexyl) phthalate (DEHP), polychlorinated biphenyls (PCBs)*. The fluff may also contain *dioxins* as a result of past on-site fires. All of these contaminants are considered potential health hazards.



## Commonly Used EPA Terms

**Explanation of Significant Differences (ESD):** A document that summarizes and explains any changes to the cleanup plan previously outlined in the Record of Decision (ROD).

**Leachate:** A contaminated liquid that is a result of water trickling through waste or contaminated materials.

**Potentially Responsible Parties (PRPs):** The companies or individuals responsible or potentially responsible for the contamination at a site. Whenever possible, through administrative and legal actions, EPA requires these parties to clean up sites they have contaminated.

**Record of Decision (ROD):** A formal document that discusses in detail the cleanup plan EPA has decided to implement at a site.

**Remedial Action:** The actual construction or implementation phase of a cleanup. When the Remedial Design is completed and approved, the Remedial Action may begin. Remedial Action refers to the actual work that will turn the cleanup plans and blueprints into a reality.

**Remedial Design:** The engineering phase that follows the Record of Decision (ROD). During this phase a plan is written with technical drawings and specifications to implement the cleanup during the Remedial Action. The Remedial Design can take a long time depending on the complexity of the design and other factors, for example the need to conduct pilot studies, obtain permits, or conclude legal negotiations.

## Site-Related Contaminants

**Bis (2 ethylhexyl) phthalate (DEHP):** A chemical that is added to plastics to make them flexible. Long-term exposure to elevated levels could cause gastrointestinal problems.

**Dioxins:** By-products from some manufacturing processes. Long-term exposure to some dioxins could cause skin problems and/or cancer.

**Lead:** A heavy metal that can be found naturally and in man-made items. Long-term exposure to elevated levels could cause learning disabilities and growth problems in children under the age of six.

**Polychlorinated biphenyls (PCBs):** Manufactured chemicals. Long-term exposure to elevated levels could cause skin irritation, developmental problems in children and/or cancer.

For more detailed descriptions and associated risk factors for any of the contaminants listed in this fact sheet, please visit the Agency for Toxic Substances and Disease Registry (ATSDR) website:  
[www.atsdr.cdc.gov/hazdat.html](http://www.atsdr.cdc.gov/hazdat.html).

If you have health-related questions,  
please contact:

**Lora Siegmann Werner, MPH**  
Agency for Toxic Substances and Disease Registry  
Department of Health and Human Services  
Phone: (215) 814-3141  
Email: [lkw9@cdc.gov](mailto:lkw9@cdc.gov)

## For More Information

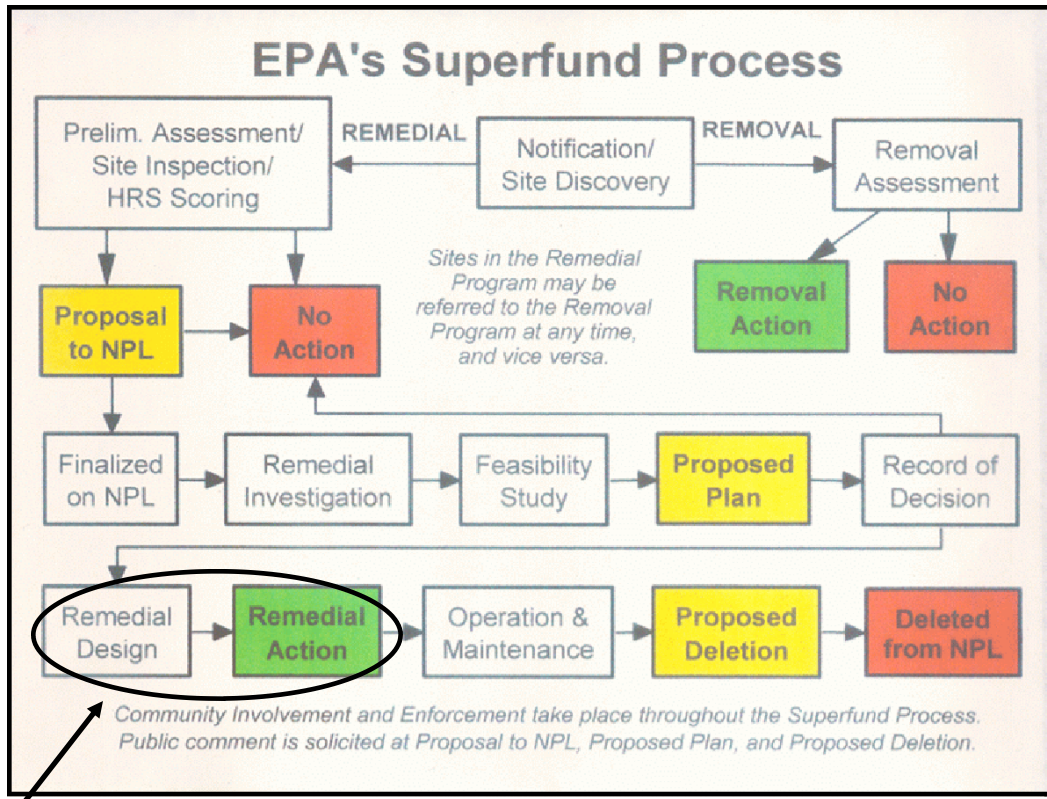
Please visit the EPA webpage for the Eastern Diversified Metals (EDM) Superfund Site at:  
<http://www.epa.gov/reg3hwmd/super/sites/PAD980830533/index.htm>.

If you have questions about the Site,  
please contact:

**John Banks**  
Remedial Project Manager  
(215) 814-3214  
[banks.john-d@epa.gov](mailto:banks.john-d@epa.gov)

- or -

**Trish Taylor**  
Community Involvement Coordinator  
(215) 814-5539  
[taylor.trish@epa.gov](mailto:taylor.trish@epa.gov)



This is where we are in the cleanup process at the Eastern Diversified Metals Superfund Site.

## EPA Update for the Eastern Diversified Metals Superfund Site



U.S. Environmental Protection Agency Region 3  
 1650 Arch Street (3HS52)  
 Philadelphia, PA 19103  
 Attention: Trish Taylor