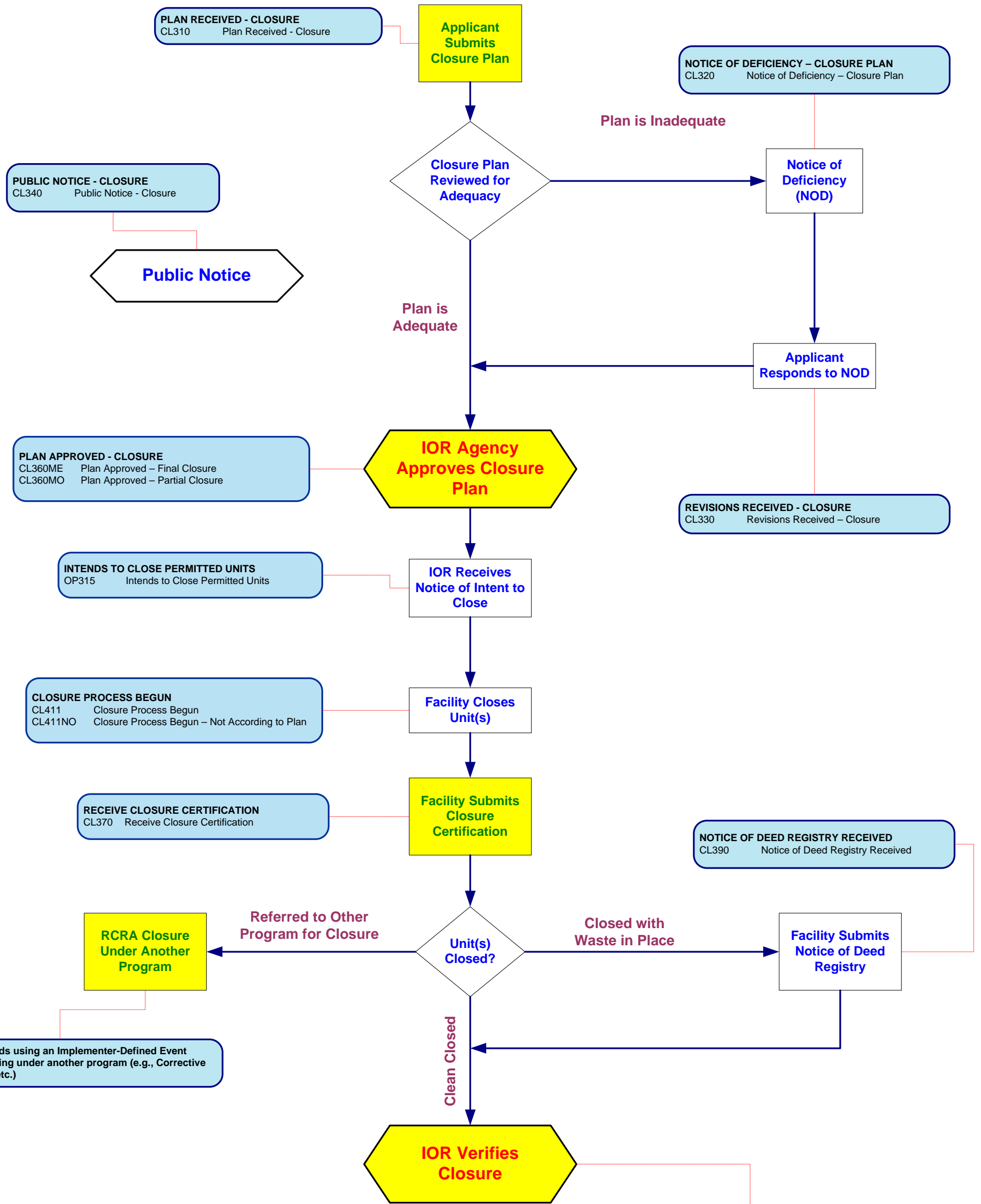


CLOSURE PLAN



PLAN RECEIVED - CLOSURE
CL310 Plan Received - Closure

NOTICE OF DEFICIENCY – CLOSURE PLAN
CL320 Notice of Deficiency – Closure Plan

PUBLIC NOTICE - CLOSURE
CL340 Public Notice - Closure

Public Notice

PLAN APPROVED - CLOSURE
CL360ME Plan Approved – Final Closure
CL360MO Plan Approved – Partial Closure

INTENDS TO CLOSE PERMITTED UNITS
OP315 Intends to Close Permitted Units

CLOSURE PROCESS BEGUN
CL411 Closure Process Begun
CL411NO Closure Process Begun – Not According to Plan

RECEIVE CLOSURE CERTIFICATION
CL370 Receive Closure Certification

REVISIONS RECEIVED - CLOSURE
CL330 Revisions Received – Closure

NOTICE OF DEED REGISTRY RECEIVED
CL390 Notice of Deed Registry Received

Region 3 recommends using an Implementer-Defined Event codes for Units closing under another program (e.g., Corrective Action, Superfund, etc.)

- CLOSURE VERIFICATION**
 CL380CA Closure Verification – Clean Closure Acceptable
 CL380CU Closure Verification – Clean Closure Unacceptable
 CL380DA Closure Verification – In-Place Waste Acceptable
 CL380DU Closure Verification – In-Place Waste Unacceptable
- CLOSURE EQUIVALENCY DETERMINATION**
 CL395EQ Equivalency Determination – Clean Closure Meet 40 CFR 264 Standard
 CL395NE Equivalency Determination – Clean Closure Does Not Meet 40 CFR 264 Standard
- CLOSURE PERIOD COMPLETED (optional)**
 CL413 Closure Period Completed
- FACILITY RELEASED FROM FINANCIAL ASSURANCE (optional)**
 CL414 Facility Released from Closure Financial Assurance Requirement

Legend

Event Codes: First Line in Bold is Code Category; Following Lines are Codes

Actions requiring Event Codes