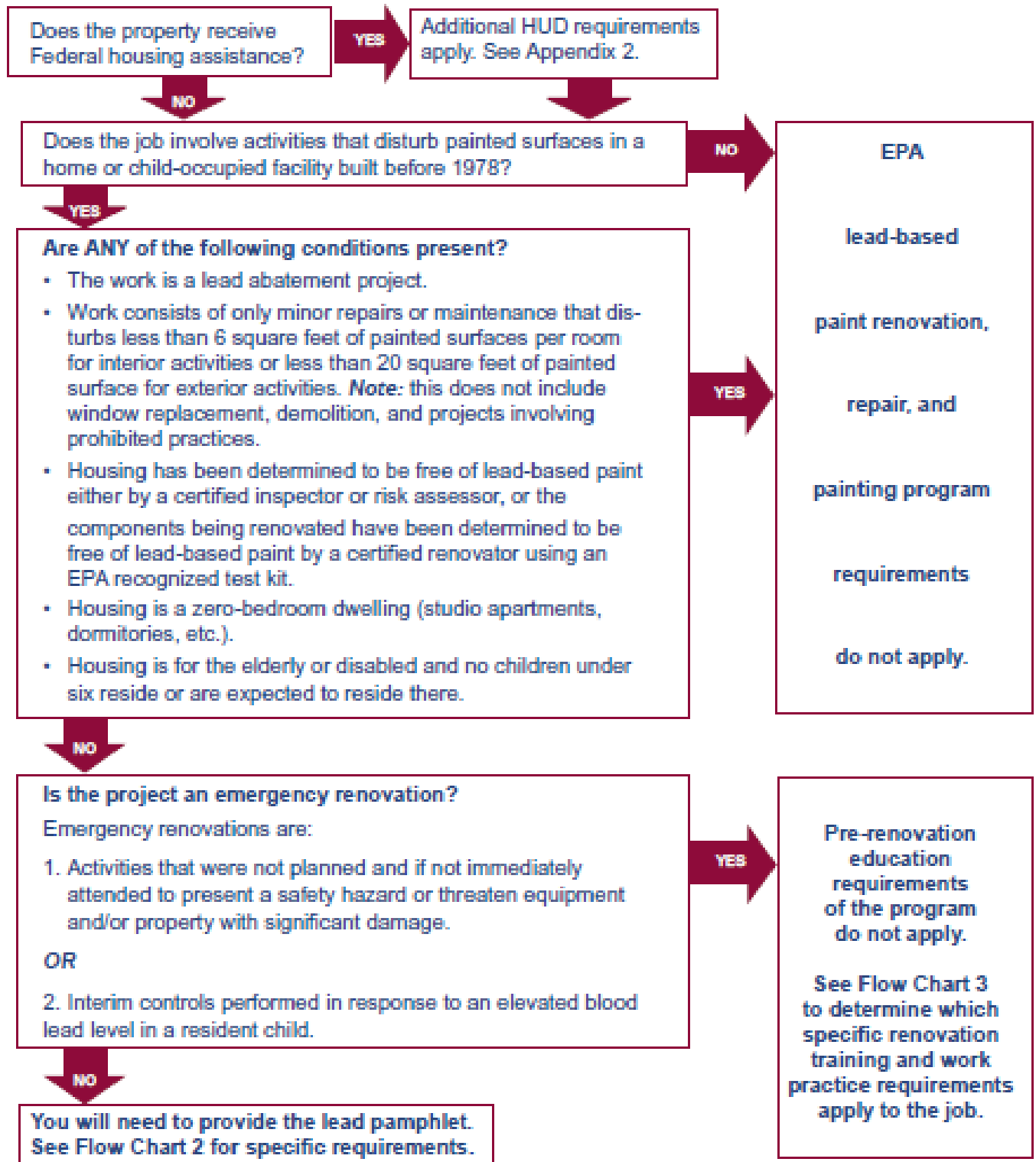


# EPA's Lead Program Rule At-A-Glance

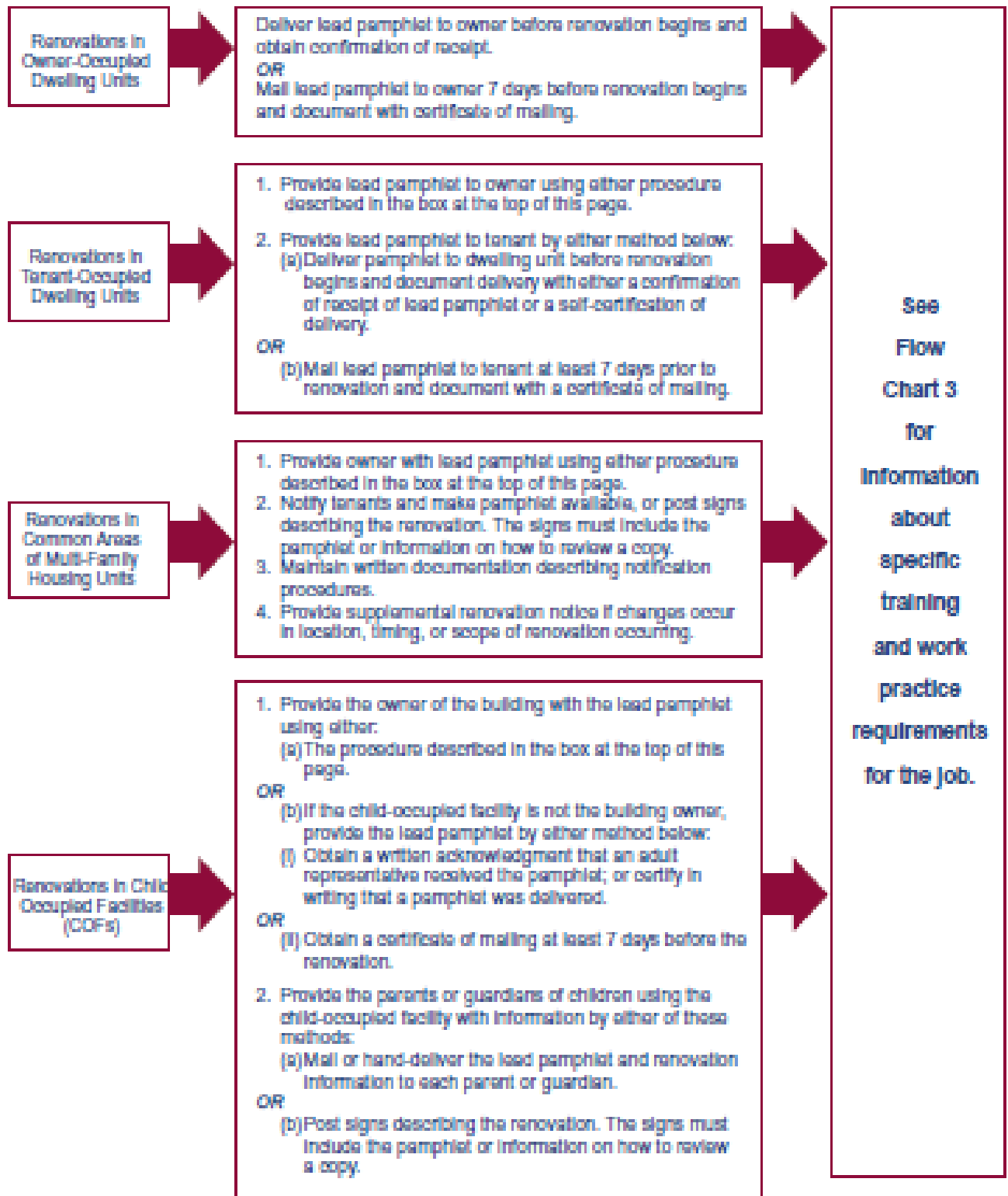
## FLOW CHART 1: Do the Requirements Apply to the Renovation?

If you will be getting paid to do work that disturbs painted surfaces in a pre-1978 home, apartment building, or child-occupied facility, answer the questions below to determine if the EPA lead program requires you to distribute the lead pamphlet and/or if you will need to comply with training, certification, and work practice requirements when conducting the work.

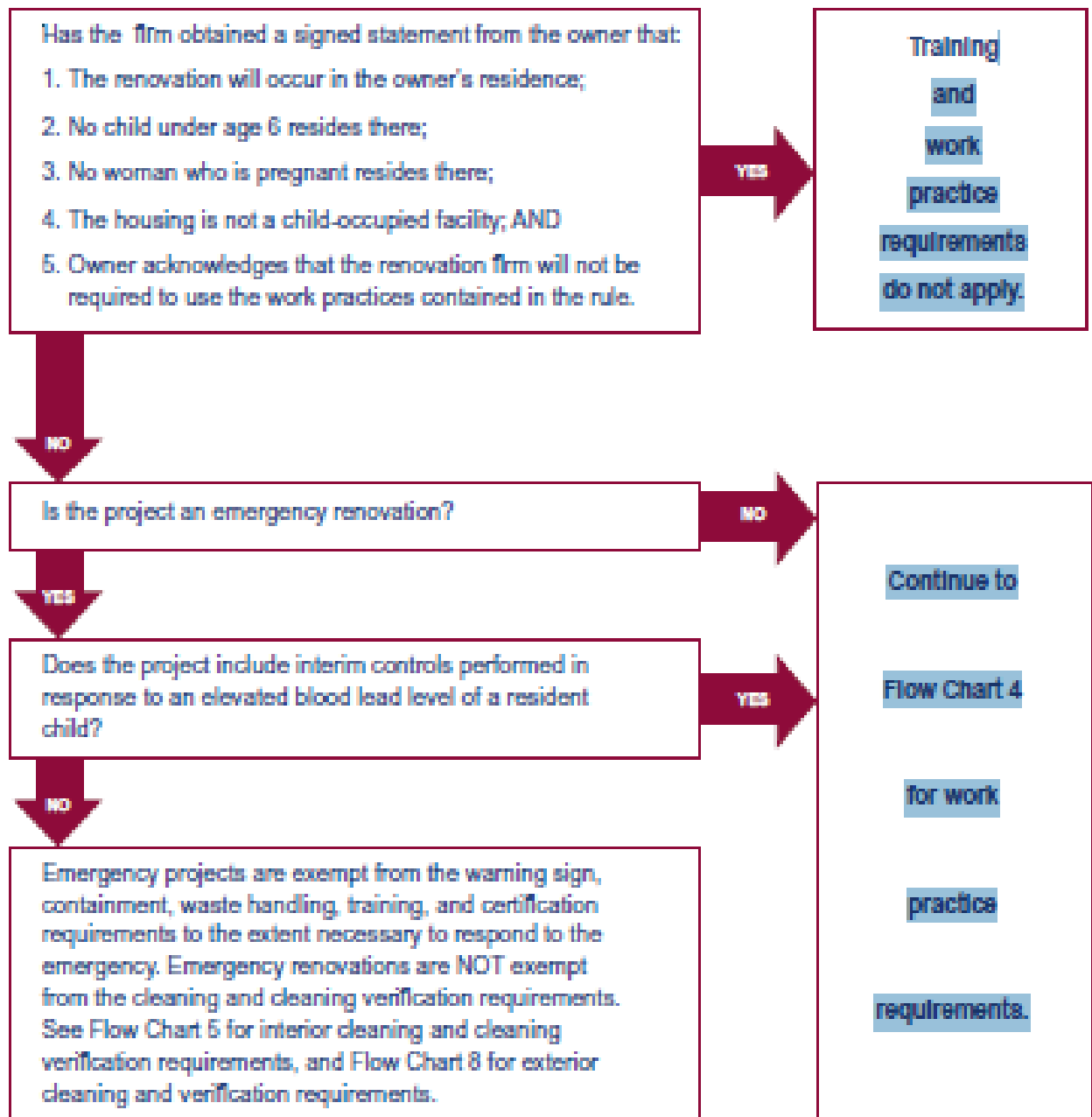


## FLOW CHART 2: How Do I Comply with the Pre-Renovation Education Requirements?

Requirements to distribute pre-renovation educational materials vary based on the location of the renovation. Select the location below that best describes the location of your project, and follow the applicable procedure on the right.




### FLOW CHART 3: Do the Renovation Training and Work Practices Apply?



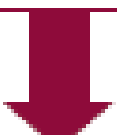
## FLOW CHART 4: Work Practice Requirements

### General

- (A) Renovations must be performed by certified firms using certified renovators.
- (B) Firms must post signs clearly defining the work area and warning occupants and other persons not involved in renovation activities to remain outside of the work area. These signs should be in the language of the occupants.
- (C) Prior to the renovation, the firm must contain the work area so that no dust or debris leaves the work area while the renovation is being performed.
- (D) Work practices listed below are prohibited during a renovation:
  1. Open-flame burning or torching of lead-based paint;
  2. Use of machines that remove lead-based paint through high speed operation such as sanding, grinding, power planing, needle gun, abrasive blasting, or sandblasting, unless such machines are used with HEPA exhaust control; and
  3. Operating a heat gun on lead-based paint at temperatures of 1100 degrees Fahrenheit or higher.
- (E) Waste from renovations:
  1. Waste from renovation activities must be contained to prevent releases of dust and debris before the waste is removed from the work area for storage or disposal.
  2. At the conclusion of each work day and at the conclusion of the renovation, waste that has been collected from renovation activities must be stored to prevent access to and the release of dust and debris.
  3. Waste transported from renovation activities must be contained to prevent release of dust and debris.



Interior  
Renovation  
Projects.  
See Flow  
Chart 5.



Exterior  
Renovation  
Projects.  
See Flow  
Chart 8.

## FLOW CHART 5: Work Practice Requirements Specific to Interior Renovations

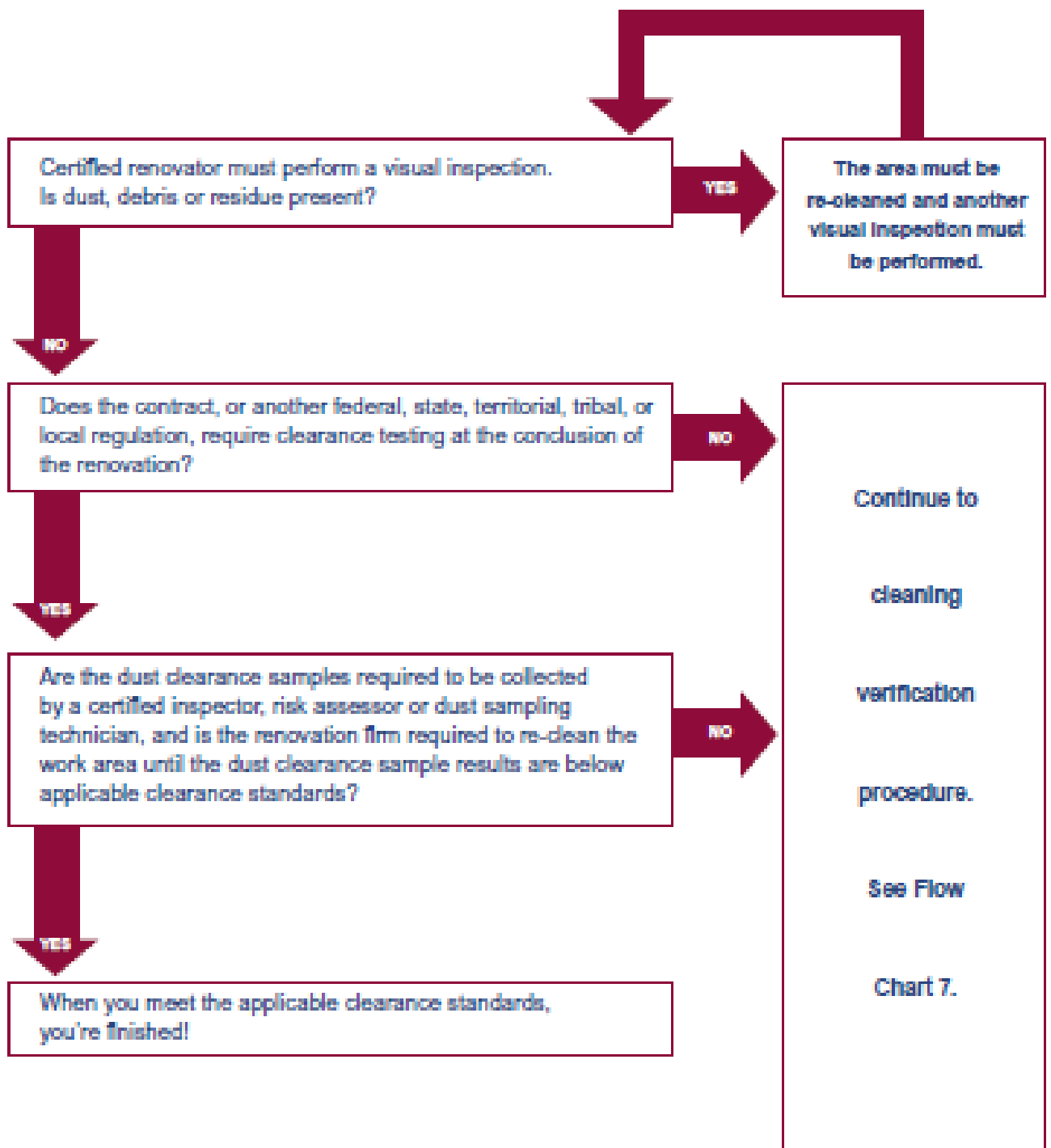
The firm must:

- (A) Remove all objects from the work area or cover them with plastic sheeting with all seams and edges sealed.
- (B) Close and cover all ducts opening in the work area with taped-down plastic sheeting.
- (C) Close windows and doors in the work area. Doors must be covered with plastic sheeting.
- (D) Cover the floor surface with taped-down plastic sheeting in the work area a minimum of six feet beyond the perimeter of surfaces undergoing renovation or a sufficient distance to contain the dust, whichever is greater.
- (E) Use precautions to ensure that all personnel, tools, and other items, including the exteriors of containers of waste, are free of dust and debris when leaving the work area.
- (F) After the renovation has been completed, the firm must clean the work area until no dust, debris or residue remains. The firm must:
  - 1. Collect all paint chips and debris, and seal it in a heavy-duty bag.
  - 2. Remove and dispose of protective sheeting as waste.
  - 3. Clean all objects and surfaces in the work area and within two feet of the work area in the following manner:
    - a. Clean walls starting at the ceiling and working down to the floor by either vacuuming with a HEPA vacuum or wiping with a damp cloth.
    - b. Thoroughly vacuum all remaining surfaces and objects in the work area, including furniture and fixtures, with a HEPA vacuum.
    - c. Wipe all remaining surfaces and objects in the work area, except for carpeted or upholstered surfaces, with a damp cloth. Mop uncarpeted floors thoroughly using a mopping method that keeps the wash water separate from the rinse water, or using a wet mopping system.



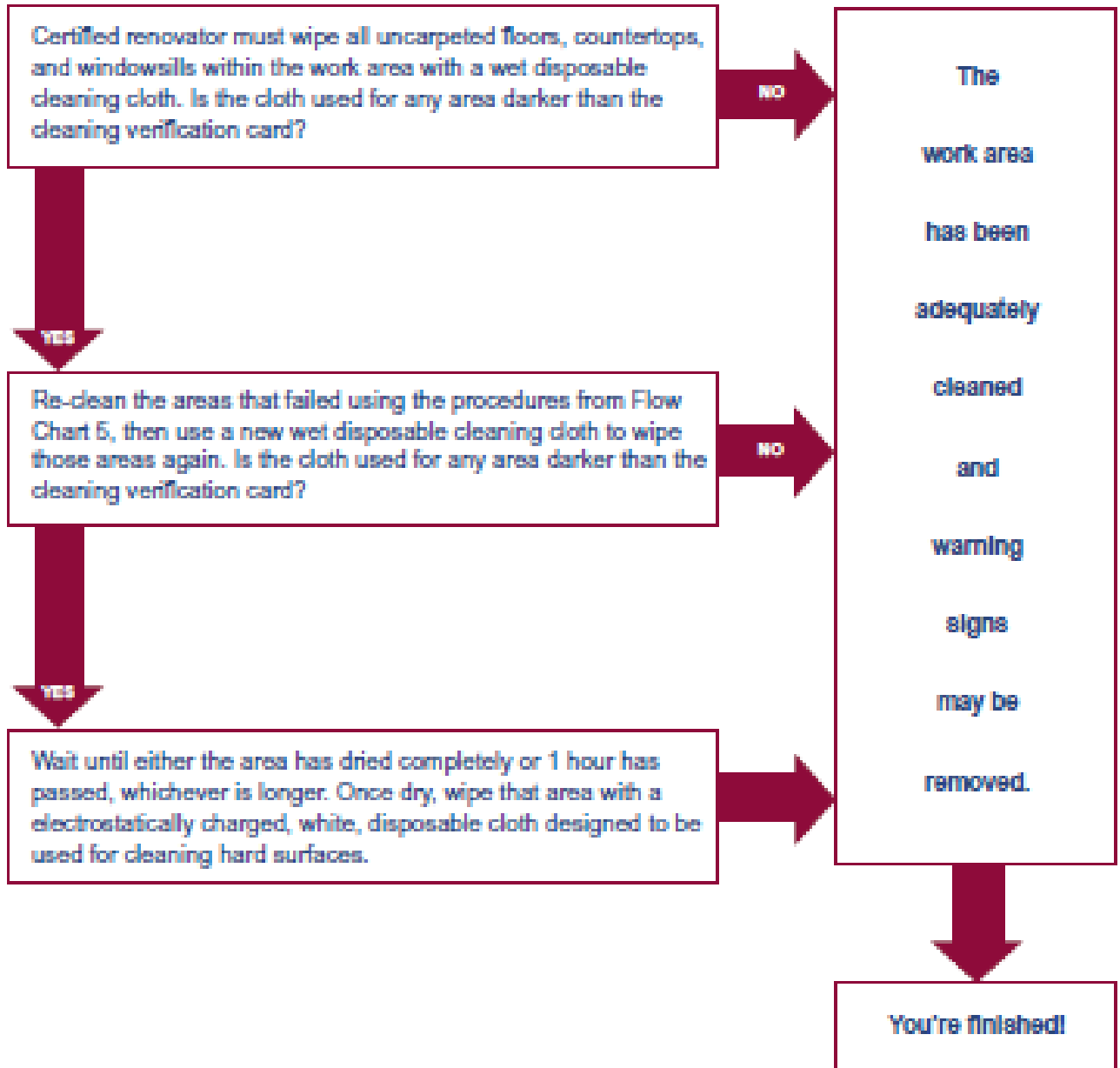
Cleaning verification is required to ensure the work area is adequately cleaned and ready for re-occupancy. See Flow Chart 6 for instructions on performing cleaning verification for interior projects.

## FLOW CHART 6: Interior Cleaning Verification: Visual Inspection and Optional Clearance Testing



## FLOW CHART 7: Interior Cleaning Verification: Floors, Countertops, and Window Sills

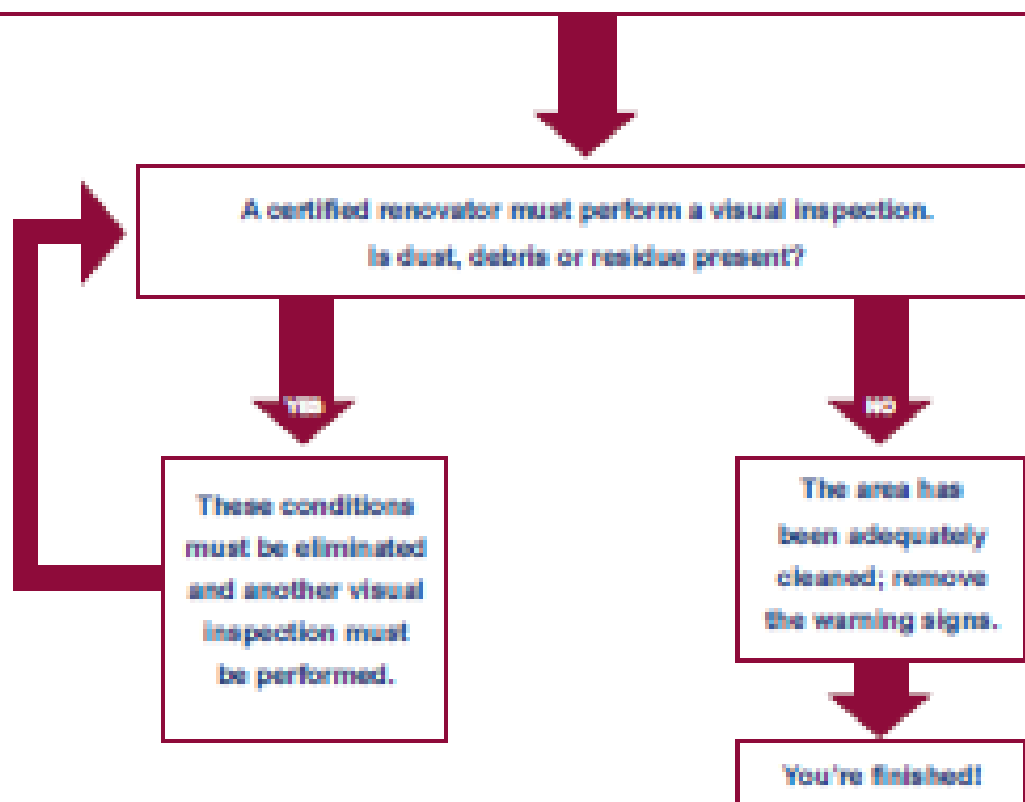
Note: For areas greater than 40 square feet, separate the area into sections and use a new disposable cleaning cloth for each section.



## FLOW CHART 8: Work Practice Requirements Specific to Exterior Renovations

The firm must:

- (A) Close all doors and windows within 20 feet of the renovation.
- (B) Ensure that doors within the work area that will be used while the job is being performed are covered with plastic sheeting in a manner that allows workers to pass through while confining dust and debris.
- (C) Cover the ground with plastic sheeting or other disposable impermeable material extending a minimum of 10 feet beyond the perimeter or a sufficient distance to collect falling paint debris, whichever is greater.
- (D) In situations such as where work areas are in close proximity to other buildings, windy conditions, etc., the renovation firm must take extra precautions in containing the work area, like vertical containment.
- (E) After the renovation has been completed, the firm must clean the work area until no dust, debris or residue remains. The firm must:
  1. Collect all paint chips and debris, and seal it in a heavy-duty bag.
  2. Remove and dispose of protective sheeting as waste.
  3. Waste transported from renovation activities must be contained to prevent release of dust and debris.





Carrier 1:26 PM



Photos



Settings



WordPress



Game Center



RRP Comply



Contacts



Safari