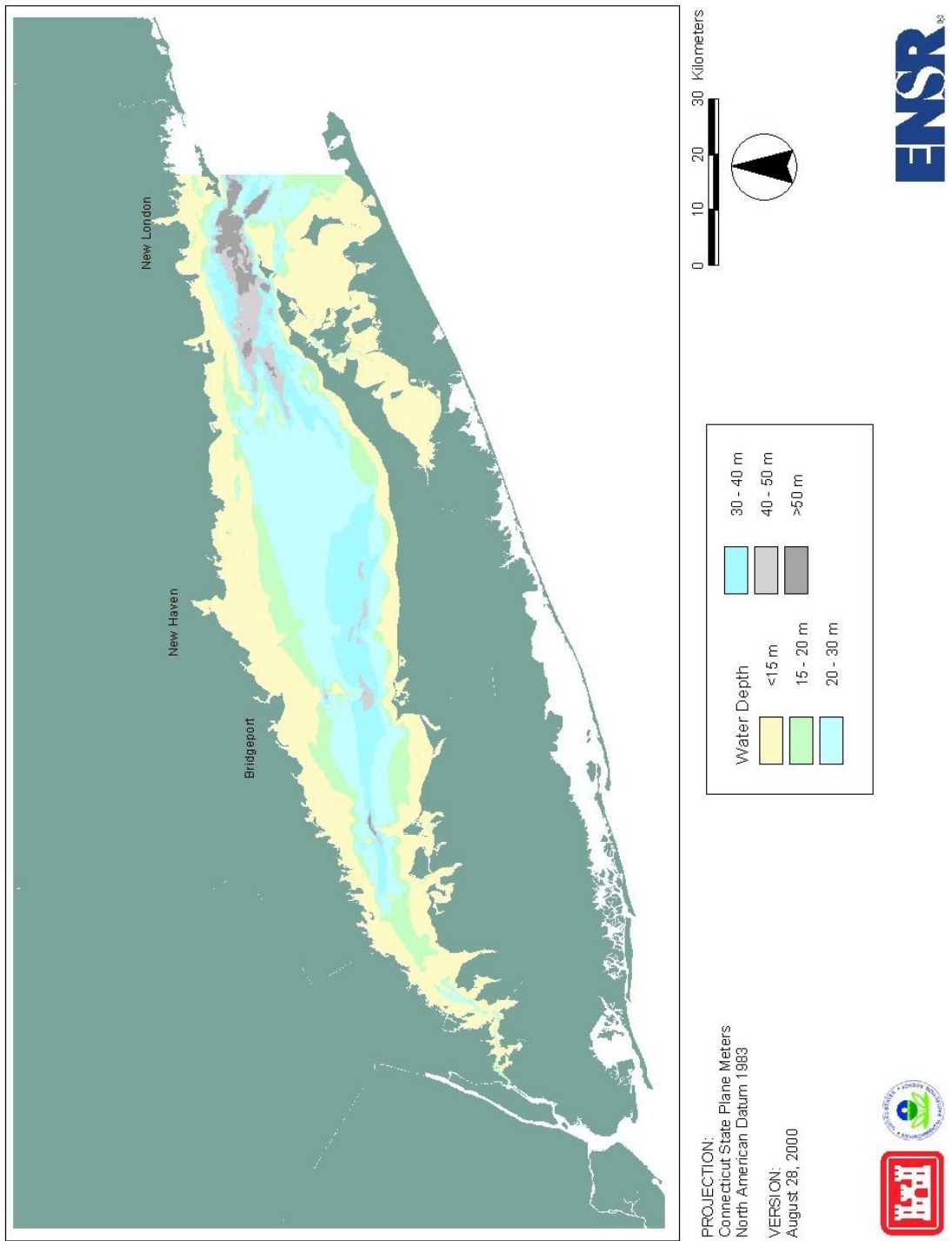
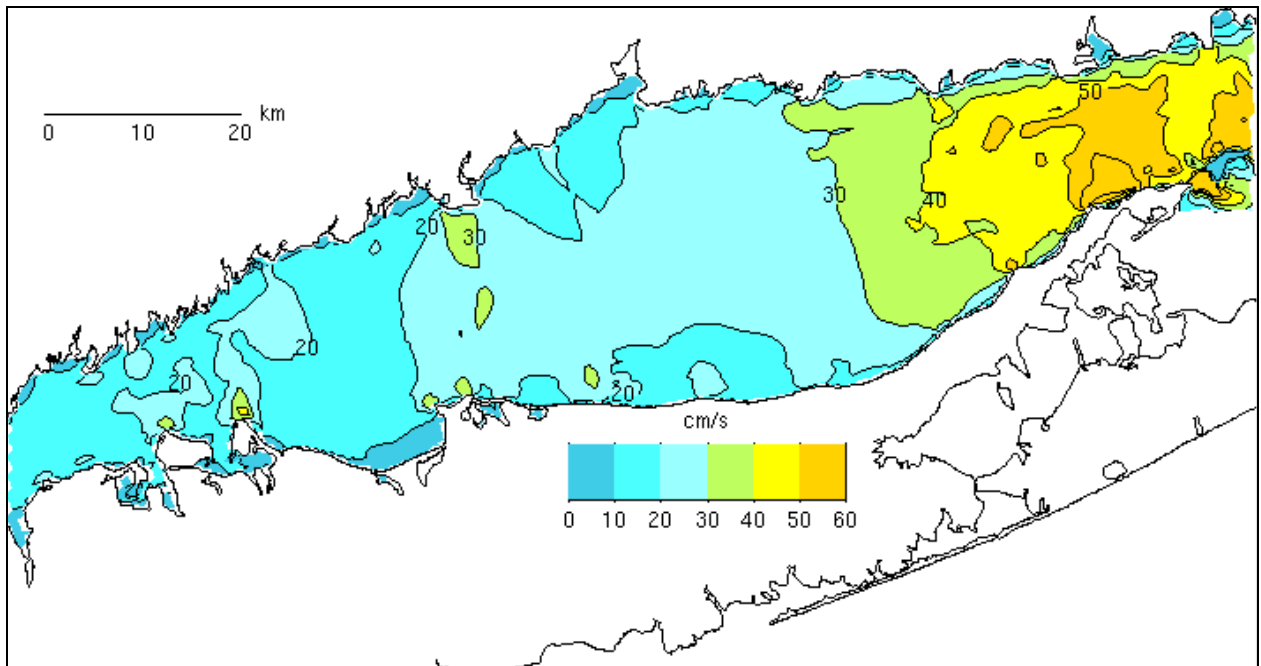


**FIGURE 2-1 MAP OF LONG ISLAND SOUND WITH BATHYMETRY**

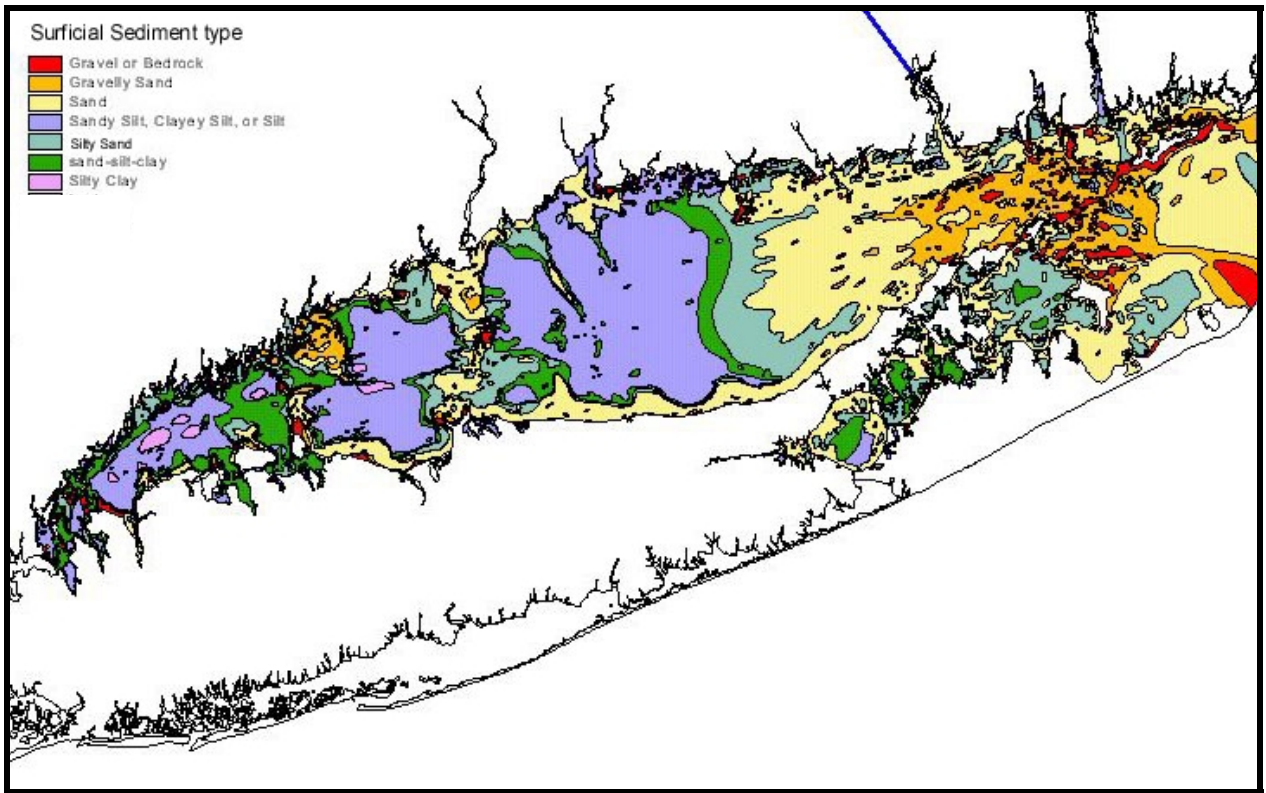


**FIGURE 2-2 PREDICTED BOTTOM CURRENTS AT 1 M ABOVE THE BOTTOM**



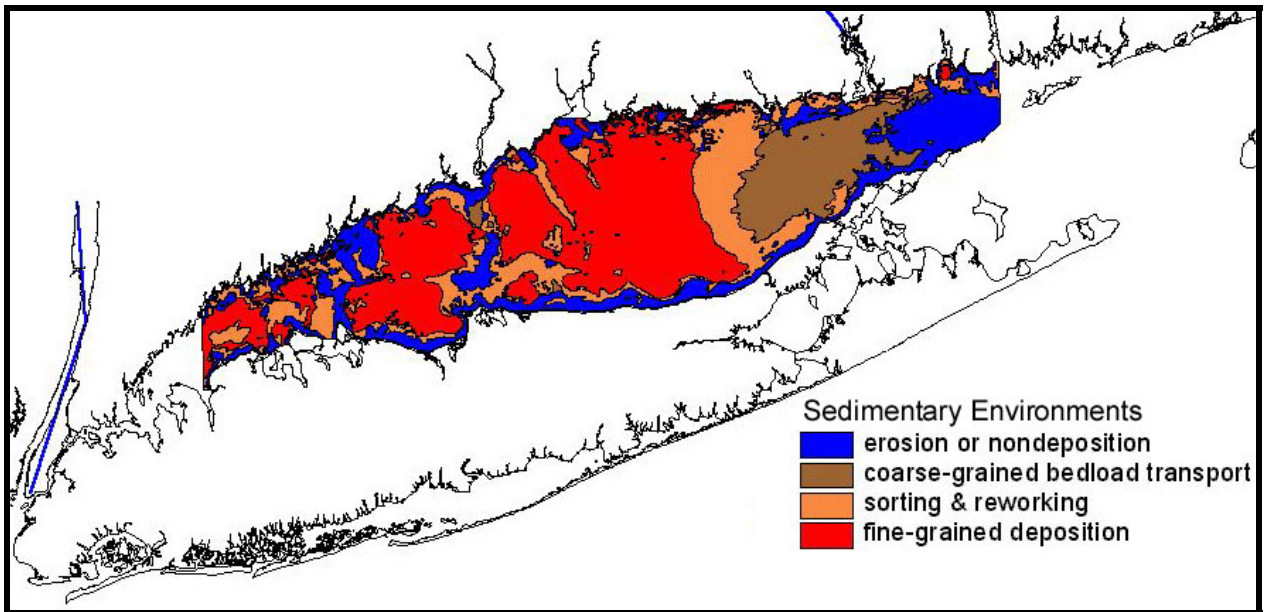
From Signell et al. 1997.

**FIGURE 2-3 DISTRIBUTION OF SURFICIAL SEDIMENTS IN LONG ISLAND SOUND**



From Poppe et al. 2000.

**FIGURE 2-4 REGIONAL DISTRIBUTION OF SEAFLOOR SEDIMENTARY ENVIRONMENTS  
IN LONG ISLAND SOUND**



From Knebel et al. 2000.