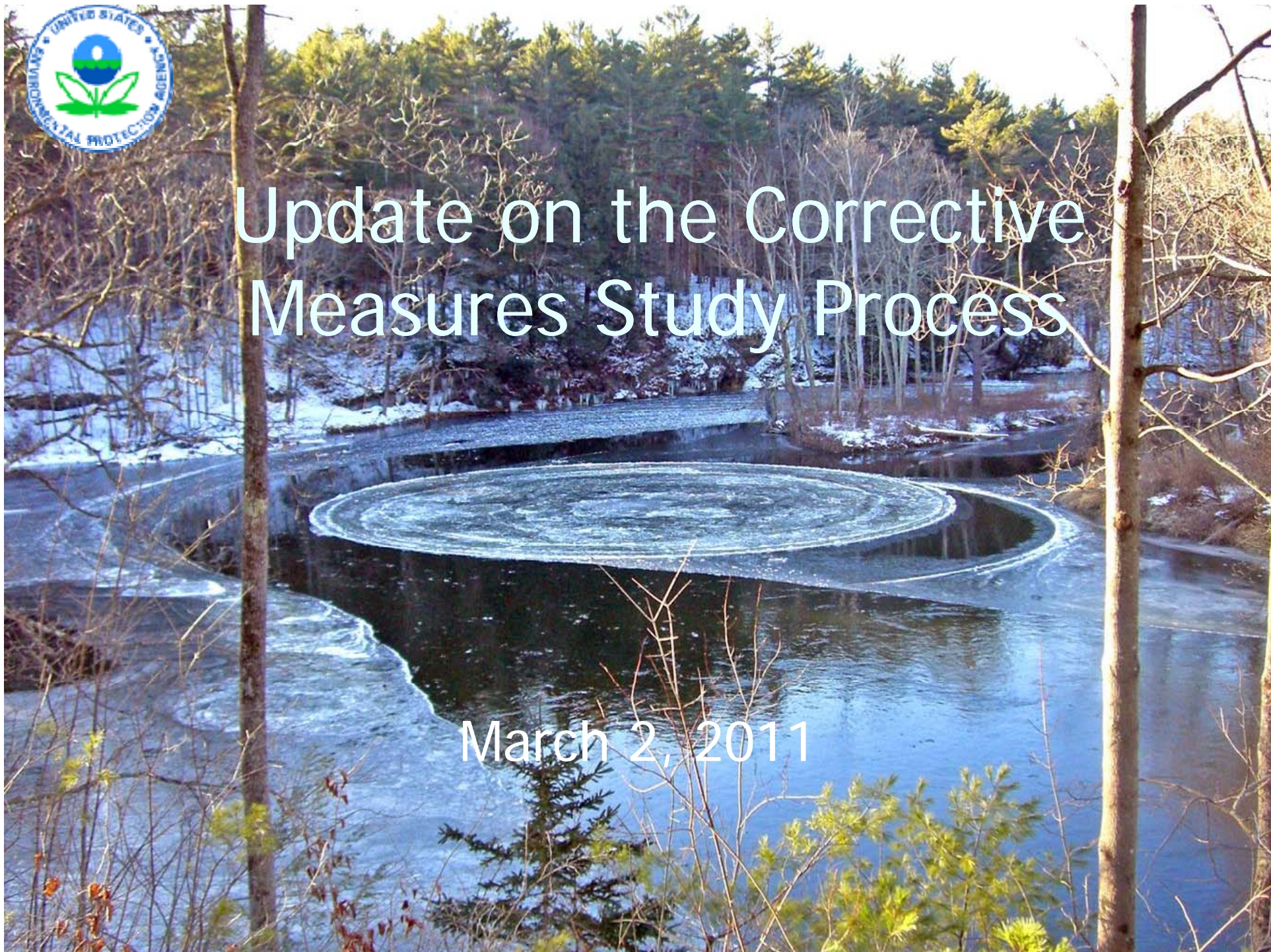




# Update on the Corrective Measures Study Process

March 2, 2011





# Status

- GE submitted its Revised Corrective Measures Study (RCMS) October 10, 2010
- The RCMS provides GE's analysis of 10 sediment, 9 floodplain, and 5 disposal alternatives and its recommended cleanup plan
- Public Input Period originally scheduled to close December 15<sup>th</sup>, extended to January 31<sup>st</sup>





# EPA's Evaluation of Alternatives

- EPA is evaluating the alternatives in the RCMS considering:
  - Input received from stakeholders
  - The 9 evaluation criteria specified in the RCRA Permit (listed below)
- General Standards
  - Overall protection of human health and the environment
  - Control of sources of releases
  - Compliance with ARARS
- Selection Decision Factors
  - Long-term reliability and effectiveness
  - Attainment of IMPGs (interim cleanup goals)
  - Reduction of toxicity, mobility, volume
  - Short-term effectiveness
  - Implementability
  - Cost



# Public Outreach

- EPA has a third-party consultant (Certus) conducting interviews with stakeholders
- These interviews lay the groundwork for a series of mini-workshops and a “charrette”
- A charrette provides an opportunity –
  - for the public to interact with EPA regarding their views on the remedial alternatives
  - to develop an understanding of how EPA must make its decision
- The charrette will be held during EPA’s decision-making process
- In addition to the charrette, as in the past, EPA will be available upon request to discuss issues of concern with stakeholders



# Schedule for Charrette Activities

- 3 Consecutive Mini Workshops
  - April 5<sup>th</sup>, 6<sup>th</sup>, and 7<sup>th</sup>
- Culminating Charrette
  - May 7<sup>th</sup>
- Location – Shakespeare & Company, Lenox





# Remedy Selection Process



EPA Internal Review/Decision-making – Spring/Summer 2011

- EPA Region I “Management Review” of Proposed Remedy
- EPA National Remedy Review Board (RRB)
  - Stakeholder groups can submit written comments (up to 10 pages) on the RCMS for RRB consideration
  - Includes coordination by RRB with EPA national Contaminated Sediments Technical Advisory Group (CSTAG)



## Remedy Selection Process (continued)

- EPA issues its Proposed Remedy for public comment – target - fall 2011
- Formal Public Comment Period and EPA outreach
- EPA Notifies GE of Intended Final Decision
  - Potential dispute resolution
- EPA issues RCRA Permit Modification ("Remedy Selection"), including response to Public Comments





# Remedy Selection Process (continued)

- Public/GE have right of appeal (EAB and US Court of Appeals)
- GE must proceed w/ design of components of the remedy that are not subject to appeal
- EPA may proceed w/ design of components that are appealed (must offer opportunity to GE)
  - If appeal is denied, GE must pay EPA costs
- Once appeals are resolved, GE must design, construct, and pay for the remedy that is upheld
- Implemented as a Superfund remedy





FOR MORE INFORMATION GO TO -  
[www.epa.gov/ne/ge](http://www.epa.gov/ne/ge)

Or contact me at [svirsky.susan@epa.gov](mailto:svirsky.susan@epa.gov)

