



GE
159 Plastics Avenue
Pittsfield, MA 01201
USA

Transmitted via Overnight Courier

January 23, 2012

Mr. Dean Tagliaferro
EPA Project Coordinator
United States Environmental Protection Agency
c/o Weston Solutions, Inc.
10 Lyman Street
Pittsfield, MA 01201

Mr. Richard Fisher (Mail Code OSRR07-1)
United States Environmental Protection Agency
5 Post Office Square - Suite 100
Boston, MA 02109-3912

**Re: GE-Pittsfield/Housatonic River Site
Newell Street Area II (GEC450), Lyman Street Area (GEC430), Former Oxbow Areas J
and K (GEC420), and Building 71 and Hill 78 On-Plant Consolidation Areas
(GEC210 & GEC220)
Summary of October and November 2011 Tree/Shrub Installation Activities**

Dear Messrs Tagliaferro and Fisher:

In inspection summary letters submitted in the fall of 2011 for Newell Street Area II (September 16, 2011), the Lyman Street Area (October 19, 2011), Former Oxbow Areas J and K (October 21, 2011), and the Building 71 and Hill 78 On-Plant Consolidation Areas (OPCAs) (October 26, 2011), GE stated that it would install certain trees and/or shrubs at each of those areas to replace plantings that were found to be dead during the August/September 2011 inspections. In accordance with those letters, GE performed the replanting activities at these areas in October and November 2011. Attached are restoration planting plan figures providing information on the trees and shrubs planted in October and November 2011 at each of these areas. Schedules for future tree/shrub inspections at each of these areas are provided below.

Newell Street Area II

Future inspections of the properties located at Newell Street Area II will be conducted in accordance with the Post-Removal Site Control requirements included in the Final Completion Report for the Newell Street Area II Removal Action (submitted on October 13, 2009 and approved by EPA on November 23, 2009). Future inspections of the revegetated areas will include the following:

- Although their two-year monitoring period has been completed, GE will continue to inspect the three trees/shrubs identified as stressed during the August 2011 inspection – i.e., a mapleleaf arrowwood in Planting Area 3 (installed in November 2009), a box elder in Planting Area 15 (installed in October 2008), and a lowbush blueberry in Planting Area 24 (installed in November 2009) – for an additional year (in May and August or September 2012).

- The shrub installed in August 2010 and the trees/shrubs installed in October and November 2010 will be inspected again in May and August or September 2012.
- The trees and shrubs installed in October 2011 will be inspected twice per year (in May and August or September) in both 2012 and 2013.

In addition, GE will inspect tree cages, guards, and stakes (where present) on trees/shrubs no longer subject to the two-year monitoring period during future annual inspections (in August or September) until such time as the tree cages are removed.

Lyman Street Area

Future inspections of the properties located at the Lyman Street Area will be conducted in accordance with the Post-Removal Site Control requirements specified in the Final Completion Report for the Lyman Street Area Removal Action (submitted on August 27, 2009 and approved by EPA on September 14, 2009) and subsequent agreements between GE and EPA. These inspections will include the following:

- The shrubs planted on Parcel I9-4-14 in October 2010 will be inspected again in May and August or September 2012.
- The trees and shrubs planted on Parcel I9-8-2 in August and October 2010 will be inspected again in May and August or September 2012.
- The shrubs planted on Parcel I9-8-2 in October 2011 will be inspected twice per year (in May and August or September) in both 2012 and 2013.

In addition, GE will inspect tree cages, guards, and stakes (where present) on trees/shrubs no longer subject to the two-year monitoring period during future annual inspections (in August or September) until such time as the tree cages are removed.

Former Oxbow Areas J and K

Future inspections of the properties located at Former Oxbow Areas J and K will be conducted in accordance with the Post-Removal Site Control requirements specified in the Final Completion Report for the Former Oxbow Areas J and K Removal Action (submitted on May 13, 2008 and approved by EPA on June 3, 2008) and subsequent agreements between GE and EPA. The trees and shrubs planted in August, October, and November 2010 will be inspected again in May and August or September 2012. The trees and shrubs planted in October 2011 will be inspected twice per year (in May and August or September) in both 2012 and 2013. In addition, GE will inspect tree cages, guards, and stakes (where present) on trees/shrubs no longer subject to the two-year monitoring period during future annual inspections (in August or September) until such time as the tree cages are removed.

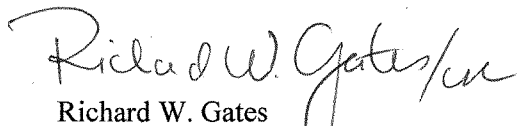
Building 71 and Hill 78 OPCAs

Future inspections of the Building 71 and Hill 78 OPCAs will be conducted in accordance with the final Revised Post-Removal Site Control (PRSC) Plan, which was included as Appendix H of the Final Completion Report for the On-Plant Consolidation Areas (submitted on September 15, 2011 and approved by EPA on September 26, 2011). The trees planted in the Perimeter Vegetated Area and other areas around the OPCAs, including the trees planted in April 2010 as part of the Tree Planting Plan, will be inspected again in May and August or September 2012 to assess their survival, growth, and condition, and whether they are

providing a visual barrier between the OPCAs and the surrounding community. The trees planted in November 2011 will be inspected twice per year (in May and August or September) in 2012 and 2013. In addition, following these inspection periods, the trees in the Perimeter Vegetated Areas and other areas around the OPCAs will continue to be inspected (as part of the OPCA Ancillary Components inspections) to keep the areas free from dead or dying vegetation and to ensure that the trees are continuing to provide a visual barrier between the OPCAs and the surrounding community, as provided in the final Revised PRSC Plan.

Please call me if you have any comments or questions.

Sincerely



Richard W. Gates
Remediation Project Manager

Attachments

cc: Holly Inglis, EPA
Tim Conway, EPA*
Rose Howell, EPA**
Michael Gorski, MDEP*
Eva Tor, MDEP*
John Ziegler, MDEP (2 copies)
Karen Pelto, MDEP*
Linda Palmieri, Weston (2 copies)
Michael Carroll, GE*
Rod McLaren, GE*
Peter Wojcik, GE*
James Nuss, ARCADIS
James Bieke, Sidley Austin
Public Information Repositories
GE Internal Repository

* cover letter only

** cover letter and CD-ROM

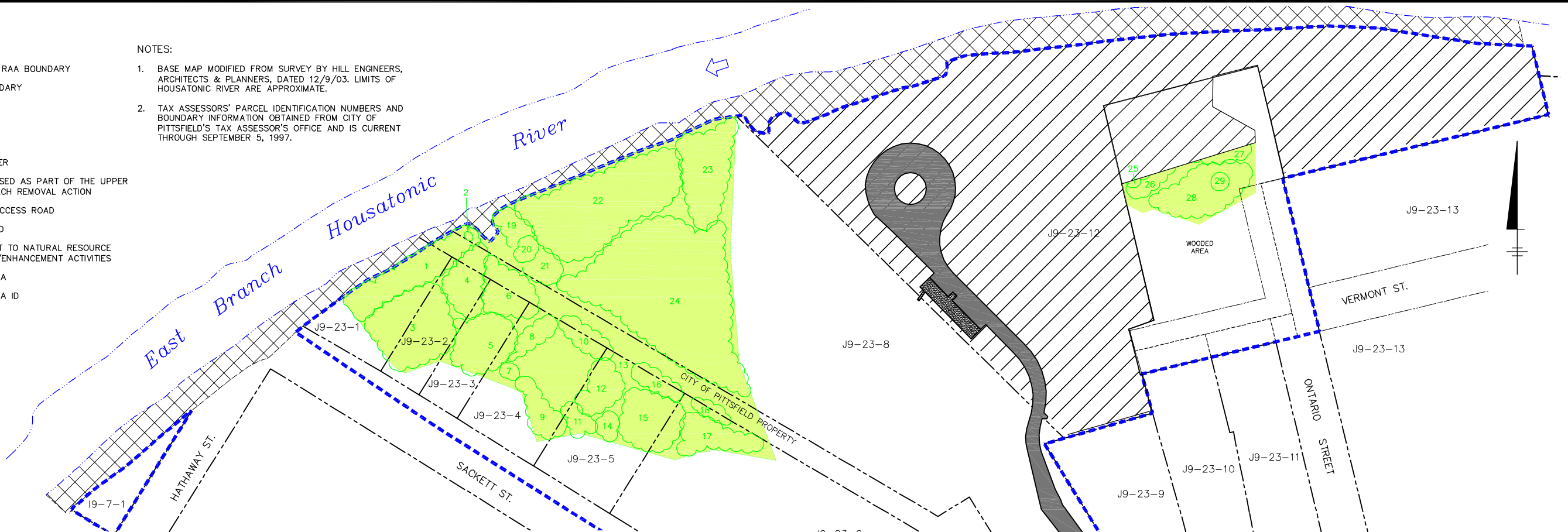
CITY: SYRACUSE, NY; GROUP: ENVCAD; DBL: FORAKER, A.S.; PROJECT: PITTSFIELD, MASSACHUSETTS, NEWELL STREET AREA II; PROJECT NAME: RESTORATION PLANTING PLAN; PROJECT NUMBER: 11772012.855.AM; BY: FORAKER, LYDIA; PLOTTED: 1/17/2012 8:55 AM; PAGES: 1; PAGESETUP: CALD2B-PDF; PLOTSTYLETABLE: PLTIFULL.CTB; ACADVER: 18.15 (LMS TECH);

LEGEND:

- APPROXIMATE RAA BOUNDARY
- PARCEL BOUNDARY
- EASEMENT
- J9-23-12 PARCEL ID
- TOP OF BANK
- EDGE OF WATER
- AREA ADDRESSED AS PART OF THE UPPER 1/2-MILE REACH REMOVAL ACTION
- BITUMINOUS ACCESS ROAD
- CONCRETE PAD
- AREA SUBJECT TO NATURAL RESOURCE RESTORATION/ENHANCEMENT ACTIVITIES
- PLANTING AREA
- 3 PLANTING AREA ID

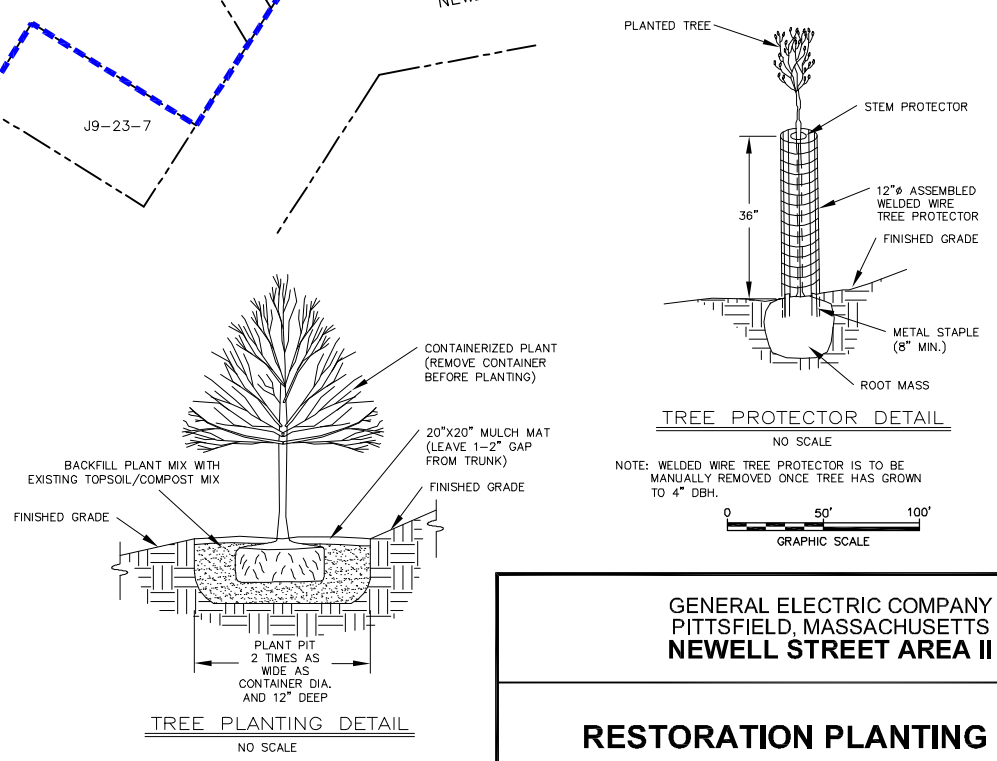
NOTES:

1. BASE MAP MODIFIED FROM SURVEY BY HILL ENGINEERS, ARCHITECTS & PLANNERS, DATED 12/9/03. LIMITS OF HOUSATONIC RIVER ARE APPROXIMATE.
2. TAX ASSESSORS' PARCEL IDENTIFICATION NUMBERS AND BOUNDARY INFORMATION OBTAINED FROM CITY OF PITTSFIELD'S TAX ASSESSOR'S OFFICE AND IS CURRENT THROUGH SEPTEMBER 5, 1997.



Planting Area	Species	Height Specification (ft.)	Originally Planted Trees/Shrubs	Replanted Trees/Shrubs								
				2008			2009		2010		2011	
				May	July	October	June	November	August	October/November	October	
1	Eastern Cottonwood (Populus Deltoides)	3-4	32	8	14	---	---	2	---	---	---	
2	Red Maple (Acer Rubrum)	3-4	1	---	---	---	---	---	---	---	---	
	Red Elderberry (Sambucus Racemosa)	2-3	20	12	---	9	---	---	---	---	---	
3	Mapleleaf Arrowwood (Viburnum Acerifolium) ^h	2-3	---	---	---	---	4	---	---	---	---	
	Lowbush Blueberry (Vaccinium Angustifolium) ^g	1-2	10	4	---	4	---	---	1	---	---	
	Chokeberry (Aronia Melanocarpa)	2-3	---	---	---	---	---	1	6	3	---	
4	Box Elder (Acer Negundo)	3-4	12	5	---	3	---	---	---	---	---	
	Slippery Elm (Ulmus Rubra) [*]	3-4	---	---	---	---	5	---	---	2	---	
5	Box Elder (Acer Negundo)	3-4	14	8	3	2	---	---	---	---	---	
	Slippery Elm (Ulmus Rubra) ^h	3-4	---	---	---	---	3	---	---	1	---	
6	Eastern Cottonwood (Populus Deltoides)	3-4	28	3	5	---	2	3	1	1	---	
7	Black Cherry (Prunus Serotina)	3-4	2	2	---	---	1	1	---	---	---	
8	Crack Willow (Salix Fragilis)	3-4	12	---	---	---	---	---	---	---	---	
9	Black Cherry (Prunus Serotina)	3-4	12	10	---	---	---	---	---	1	---	
10	Red Maple (Acer Rubrum) ^b	3-4	7	---	---	---	4	---	1	---	---	
	Box Elder (Acer Negundo)	3-4	3	3	---	---	---	---	---	---	---	
11	Slippery Elm (Ulmus Rubra) [*]	3-4	---	---	---	---	3	---	---	---	---	
	Red Elderberry (Sambucus Racemosa)	2-3	8	7	---	3	---	---	---	---	---	
	Nannyberry (Viburnum Lentago) ^h	2-3	---	---	---	---	6	---	---	1	---	
13	Eastern Cottonwood (Populus Deltoides)	3-4	1	---	---	---	---	---	---	---	---	
14	Northern Red Oak (Quercus Rubra)	3-4	3	3	---	---	---	---	---	---	---	
15	Box Elder (Acer Negundo)	3-4	10	2	1	4	---	---	---	---	---	
	Slippery Elm (Ulmus Rubra) [*]	3-4	---	---	---	---	4	---	---	---	---	
16	Red Maple (Acer Rubrum)	3-4	4	---	3	1	---	---	---	---	---	
17	Box Elder (Acer Negundo)	3-4	10	1	---	5	---	---	---	---	---	
	Slippery Elm (Ulmus Rubra) [*]	3-4	---	---	---	---	9	---	---	---	---	
18	Northern Red Oak (Quercus Rubra)	3-4	3	2	1	---	---	---	---	---	---	
19	Eastern Cottonwood (Populus Deltoides)	3-4	6	---	---	---	3	---	---	1	---	
20	Red Maple (Acer Rubrum)	3-4	2	1	---	1	---	---	---	---	---	
	Box Elder (Acer Negundo)	3-4	2	---	---	1	---	---	---	---	---	
21	Slippery Elm (Ulmus Rubra) ^h	3-4	---	---	---	---	1	---	---	1	---	
	Red Elderberry (Sambucus Racemosa)	2-3	6	3	1	6	---	---	---	---	---	
	Chokeberry (Aronia Melanocarpa) [*]	2-3	---	---	---	---	3	---	3	---	---	
23	Red Maple (Acer Rubrum) ^m	3-4	5	---	2	---	1	1	---	2	---	
	Red Elderberry (Sambucus Racemosa)	2-3	20	20	---	10	---	---	---	---	---	
	Chokeberry (Aronia Melanocarpa) ^c	2-3	---	---	---	---	8	---	8	7	---	
24	Mapleleaf Arrowwood (Viburnum Acerifolium) ^h	2-3	---	---	---	---	3	---	---	---	---	
	Lowbush Blueberry (Vaccinium Angustifolium) ^e	1-2	10	10	---	---	1	---	2	---	---	
	Red Osier Dogwood (Cornus Sericea)	2-3	1	1	---	---	---	---	---	---	---	
25	Red Elderberry (Sambucus Racemosa)	2-3	1	---	---	1	---	---	---	---	---	
	Mapleleaf Arrowwood (Viburnum Acerifolium) ^k	2-3	---	---	---	---	---	---	---	---	---	
	Chokeberry (Aronia Melanocarpa) [*]	2-3	---	---	---	---	---	---	---	1	---	
26	Box Elder (Acer Negundo)	3-4	4	4	---	---	---	---	---	---	---	
	Slippery Elm (Ulmus Rubra) [*]	3-4	---	---	---	---	2	---	---	---	---	
27	Eastern Cottonwood (Populus Deltoides) ^f	3-4	2	2	---	---	1	---	---	---	---	
	Box Elder (Acer Negundo) ^g	3-4	20	21	---	---	1	---	---	---	---	
28	Slippery Elm (Ulmus Rubra) [*]	3-4	---	---	---	---	8	---	---	---	---	
29	Slippery Elm (Ulmus Rubra)	3-4	3	3	---	---	---	---	---	---	---	
TOTAL				274	135	30	50	8	95	1	22	21

- a. One Lowbush Blueberry planted in November 2009 was removed from the table due to mortality observed during the September 2010 inspection. Additionally, one Lowbush Blueberry planted in June 2009 was removed from the table due to mortality observed during the May 2011 inspection.
- b. One Red Maple planted in November 2009 was removed from the table due to mortality observed during the September 2010 inspection.
- c. One Chokeberry planted in November 2009 was removed from the table due to mortality observed during the September 2010 inspection.
- d. Five Mapleleaf Arrowwoods planted in November 2009 were removed from the table due to mortality observed during the September 2010 inspection. Additionally, one Mapleleaf Arrowwood planted in November 2009 was removed from the table due to observations of the tree being stressed during three consecutive inspections.
- e. Two Lowbush Blueberries planted in November 2009 were removed from the table due to mortality observed during the September 2010 inspection. Additionally, four more Lowbush Blueberries planted in November 2009 were removed from the table due to mortality observed during the May and August 2011 inspections.
- f. One Eastern Cottonwood planted in November 2009 was removed from the table due to mortality observed during the May 2010 inspection.
- g. One Box Elder planted in June 2009 was removed from the table due to mortality observed during the May 2010 inspection.
- h. One Mapleleaf Arrowwood planted in November 2009 was removed from the table due to mortality observed during the August 2011 inspection.
- i. One Slippery Elm planted in November 2009 was removed from the table due to mortality observed during the May 2011 inspection.
- j. One Slippery Elm planted in November 2009 was removed from the table due to mortality observed during the May 2011 inspection.
- k. One Mapleleaf Arrowwood planted in November 2009 was removed from the table due to mortality observed during the May 2011 inspection.
- l. One Nannyberry planted in November 2009 was removed from the table due to mortality observed during the August 2011 inspection.
- m. One Red Maple planted in June 2009 was removed from the table due to mortality observed during the August 2011 inspection.



GENERAL ELECTRIC COMPANY
PITTSFIELD, MASSACHUSETTS
NEWELL STREET AREA II

RESTORATION PLANTING PLAN

ARCADIS

FIGURE 3

* DENOTES SUBSTITUTE SPECIES PROPOSED BY GE AND APPROVED BY EPA.

CITY: SYRACUSE, NY; DIV/GROUP: ENV/41; DB: G. STOWELL; E: KRAEMER; L: FORAKER; LD: PIC: P. KEANEY; PK: C. AVERILL; TM: A. CORBIN; LY: R. OFF; REF: VAE: NCAD; SYRACUSE/ACT: NMB003091; 1000000000; DWG: GUYLYMAN/PLANTING/3091; 10001; DWG; LAYOUT: 3; SAVED: 12/15/2011 10:34 AM; ACADVER: 18.1; (LMS TECH); PAGESETUP: 3; PLOTSTYLE: TABLE: PLT/FULL.CTB; PLOT: 12/15/2011 10:34 AM; BY: FORAKER, LYDIA

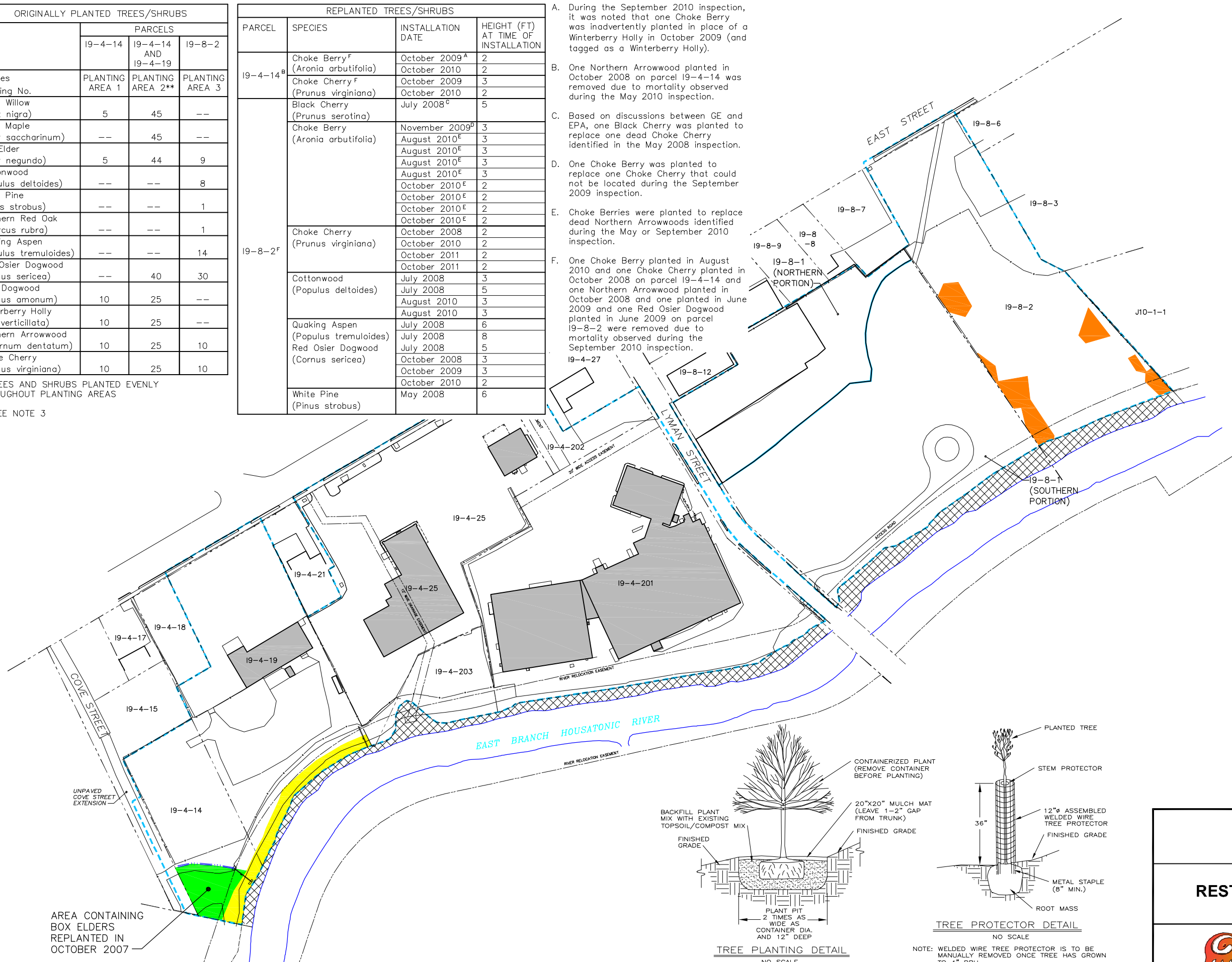
SPECIES	ORIGINALLY PLANTED TREES/SHRUBS		
	19-4-14	19-4-14 AND 19-4-19	19-8-2
Black Willow (Salix nigra)	5	45	--
Silver Maple (Acer saccharinum)	--	45	--
Box Elder (Acer negundo)	5	44	9
Cottonwood (Populus deltoides)	--	--	8
White Pine (Pinus strobus)	--	--	1
Northern Red Oak (Quercus rubra)	--	--	1
Quaking Aspen (Populus tremuloides)	--	--	14
Red Osier Dogwood (Cornus sericea)	--	40	30
Silky Dogwood (Cornus amomum)	10	25	--
Winterberry Holly (Ilex verticillata)	10	25	--
Northern Arrowwood (Viburnum dentatum)	10	25	10
Choke Cherry (Prunus virginiana)	10	25	10

* TREES AND SHRUBS PLANTED EVENLY THROUGHOUT PLANTING AREAS

** SEE NOTE 3

PARCEL	SPECIES	REPLANTED TREES/SHRUBS	
		INSTALLATION DATE	HEIGHT (FT) AT TIME OF INSTALLATION
19-4-14 ^B	Choke Berry ^F (Aronia arbutifolia)	October 2009 ^A	2
	Choke Cherry ^F (Prunus virginiana)	October 2010	2
	Choke Cherry ^F (Prunus virginiana)	October 2009	3
	Choke Cherry ^F (Prunus virginiana)	October 2010	2
19-8-2 ^F	Black Cherry (Prunus serotina)	July 2008 ^C	5
	Choke Berry (Aronia arbutifolia)	November 2009 ^D	3
	Choke Berry (Aronia arbutifolia)	August 2010 ^E	3
	Choke Berry (Aronia arbutifolia)	August 2010 ^E	3
	Choke Berry (Aronia arbutifolia)	August 2010 ^E	3
	Choke Berry (Aronia arbutifolia)	August 2010 ^E	3
	Choke Berry (Aronia arbutifolia)	October 2010 ^E	2
	Choke Berry (Aronia arbutifolia)	October 2010 ^E	2
	Choke Berry (Aronia arbutifolia)	October 2010 ^E	2
	Choke Berry (Aronia arbutifolia)	October 2010 ^E	2
	Choke Cherry (Prunus virginiana)	October 2008	2
	Choke Cherry (Prunus virginiana)	October 2010	2
Choke Cherry (Prunus virginiana)	October 2011	2	
Cottonwood (Populus deltoides)	July 2008	3	
Cottonwood (Populus deltoides)	July 2008	5	
Cottonwood (Populus deltoides)	August 2010	3	
Cottonwood (Populus deltoides)	August 2010	3	
Quaking Aspen (Populus tremuloides)	July 2008	6	
Quaking Aspen (Populus tremuloides)	July 2008	8	
Red Osier Dogwood (Cornus sericea)	July 2008	5	
Red Osier Dogwood (Cornus sericea)	October 2008	3	
Red Osier Dogwood (Cornus sericea)	October 2009	3	
Red Osier Dogwood (Cornus sericea)	October 2010	2	
White Pine (Pinus strobus)	May 2008	6	

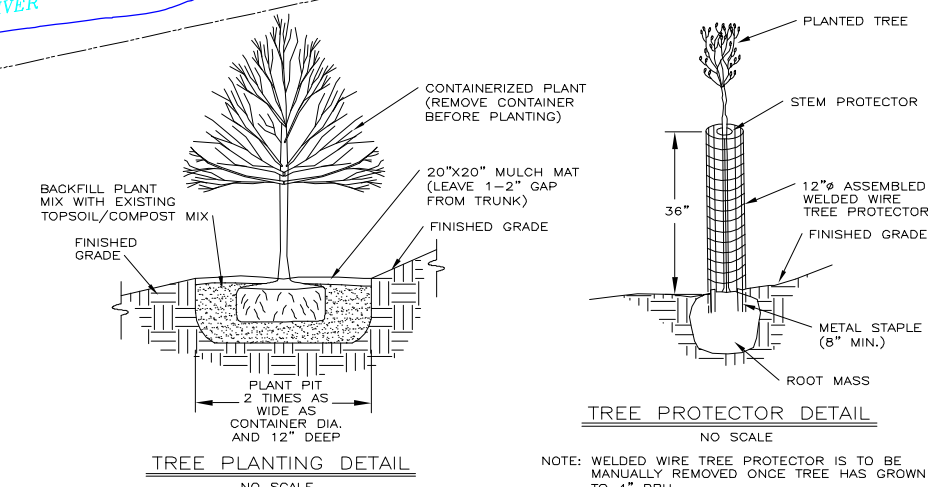
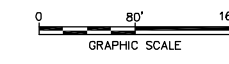
- A. During the September 2010 inspection, it was noted that one Choke Berry was inadvertently planted in place of a Winterberry Holly in October 2009 (and tagged as a Winterberry Holly).
- B. One Northern Arrowwood planted in October 2008 on parcel 19-4-14 was removed due to mortality observed during the May 2010 inspection.
- C. Based on discussions between GE and EPA, one Black Cherry was planted to replace one dead Choke Cherry identified in the May 2008 inspection.
- D. One Choke Berry was planted to replace one Choke Cherry that could not be located during the September 2009 inspection.
- E. Choke Berries were planted to replace dead Northern Arrowwoods identified during the May or September 2010 inspection.
- F. One Choke Berry planted in August 2010 and one Choke Cherry planted in October 2008 on parcel 19-4-14 and one Northern Arrowwood planted in October 2008 and one planted in June 2009 and one Red Osier Dogwood planted in June 2009 on parcel 19-8-2 were removed due to mortality observed during the September 2010 inspection.



LEGEND

- APPROXIMATE RAA BOUNDARY
- PARCEL BOUNDARY
- 19-8-3 PARCEL ID
- CHAIN LINK FENCE
- WOODEN FENCE
- BUILDING
- AREA ADDRESSED AS PART OF 1/2-MILE REACH REMOVAL ACTION OR 1 1/2-MILE REACH REMOVAL ACTION
- PLANTING AREA 1 (SEE PLANTING PLAN FOR DETAILS)
- PLANTING AREA 2 (SEE NOTE 3)
- PLANTING AREA 3 (SEE PLANTING PLAN FOR DETAILS)

- NOTES:**
- MAPPING IS BASED ON SITE SURVEYS BY HILL ENGINEERS, ARCHITECTS & PLANNERS INC., DATED 2/5/04 AND 10/15/07 AND FROM AERIAL PHOTOGRAPHS AND PHOTOGRAMMETRIC MAPPING BY LOCKWOOD MAPPING, INC. - FLOWN IN APRIL 1990 (EDGE OF RIVER).
 - BASEMAP MODIFIED FROM SURVEY DRAWINGS NOS. 06-05-09-LE AND 06-05-09-LA (7/7/06, 6/15/06) BY WHITE ENGINEERING, INC.
 - PLANTING AREA 2 IS NOT INSPECTED AS PART OF POST-REMOVAL SITE CONTROL ACTIVITIES FOR THE LYMAN STREET AREA, BUT AS PART OF POST-REMOVAL SITE CONTROL ACTIVITIES FOR THE 1/2 MILE REACH.

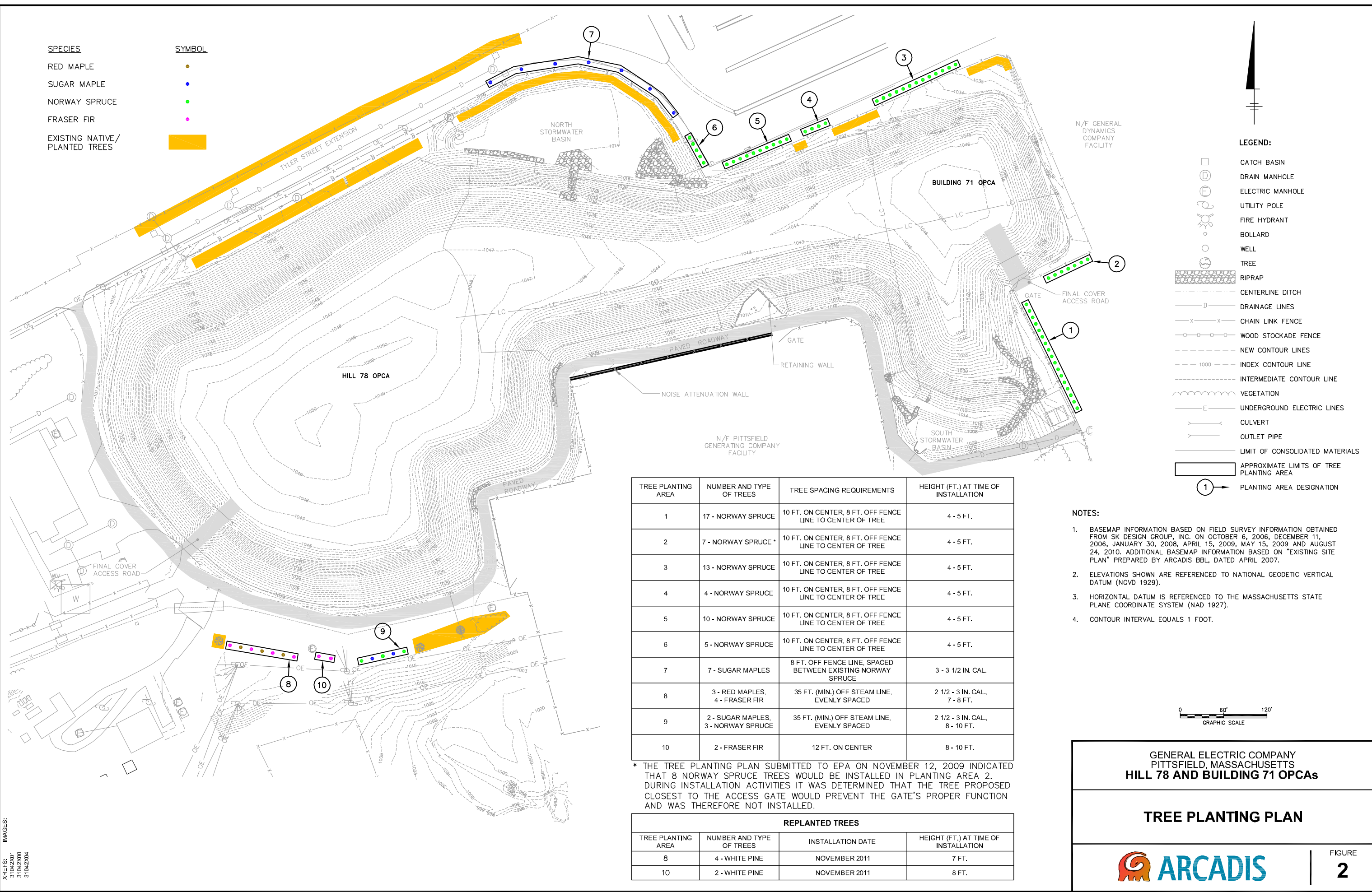


**GENERAL ELECTRIC COMPANY
PITTSFIELD, MASSACHUSETTS
LYMAN STREET AREA**

RESTORATION PLANTING PLAN

FIGURE
3

CITY: SYRACUSE DIV/GROUP: EN/CAD DB: R. BASSETT, B. GETTIS, L. FORAKER, LD: PIC: P. KEANEY, P. W. RANKIN, TM: P. BATTEN, LYR: ON, OFF*REF*
 VAE/NCAD/SYRACUSE/ACT/CAD/03/042201/10000/DWG/HILL78 BUILD71/31042201.DWG LAYOUT: 2. SAVED: 12/21/2011 2:28 PM. ACADVER: 18.1 (S LMS TECH) PAGES: 2. PLOTSETUP: CALD2B-PDF PLOTSTYLETABLE: PLT/PLT.CTB PLOTTED: 12/21/2011 2:28 PM BY: FORAKER, LYDIA



TREE PLANTING AREA	NUMBER AND TYPE OF TREES	TREE SPACING REQUIREMENTS	HEIGHT (FT.) AT TIME OF INSTALLATION
1	17 - NORWAY SPRUCE	10 FT. ON CENTER, 8 FT. OFF FENCE LINE TO CENTER OF TREE	4 - 5 FT.
2	7 - NORWAY SPRUCE *	10 FT. ON CENTER, 8 FT. OFF FENCE LINE TO CENTER OF TREE	4 - 5 FT.
3	13 - NORWAY SPRUCE	10 FT. ON CENTER, 8 FT. OFF FENCE LINE TO CENTER OF TREE	4 - 5 FT.
4	4 - NORWAY SPRUCE	10 FT. ON CENTER, 8 FT. OFF FENCE LINE TO CENTER OF TREE	4 - 5 FT.
5	10 - NORWAY SPRUCE	10 FT. ON CENTER, 8 FT. OFF FENCE LINE TO CENTER OF TREE	4 - 5 FT.
6	5 - NORWAY SPRUCE	10 FT. ON CENTER, 8 FT. OFF FENCE LINE TO CENTER OF TREE	4 - 5 FT.
7	7 - SUGAR MAPLES	8 FT. OFF FENCE LINE, SPACED BETWEEN EXISTING NORWAY SPRUCE	3 - 3 1/2 IN. CAL.
8	3 - RED MAPLES, 4 - FRASER FIR	35 FT. (MIN.) OFF STEAM LINE, EVENLY SPACED	2 1/2 - 3 IN. CAL., 7 - 8 FT.
9	2 - SUGAR MAPLES, 3 - NORWAY SPRUCE	35 FT. (MIN.) OFF STEAM LINE, EVENLY SPACED	2 1/2 - 3 IN. CAL., 8 - 10 FT.
10	2 - FRASER FIR	12 FT. ON CENTER	8 - 10 FT.

* THE TREE PLANTING PLAN SUBMITTED TO EPA ON NOVEMBER 12, 2009 INDICATED THAT 8 NORWAY SPRUCE TREES WOULD BE INSTALLED IN PLANTING AREA 2. DURING INSTALLATION ACTIVITIES IT WAS DETERMINED THAT THE TREE PROPOSED CLOSEST TO THE ACCESS GATE WOULD PREVENT THE GATE'S PROPER FUNCTION AND WAS THEREFORE NOT INSTALLED.

REPLANTED TREES			
TREE PLANTING AREA	NUMBER AND TYPE OF TREES	INSTALLATION DATE	HEIGHT (FT.) AT TIME OF INSTALLATION
8	4 - WHITE PINE	NOVEMBER 2011	7 FT.
10	2 - WHITE PINE	NOVEMBER 2011	8 FT.

- NOTES:**
- BASEMAP INFORMATION BASED ON FIELD SURVEY INFORMATION OBTAINED FROM SK DESIGN GROUP, INC. ON OCTOBER 6, 2006, DECEMBER 11, 2006, JANUARY 30, 2008, APRIL 15, 2009, MAY 15, 2009 AND AUGUST 24, 2010. ADDITIONAL BASEMAP INFORMATION BASED ON "EXISTING SITE PLAN" PREPARED BY ARCADIS BBL, DATED APRIL 2007.
 - ELEVATIONS SHOWN ARE REFERENCED TO NATIONAL GEODETIC VERTICAL DATUM (NGVD 1929).
 - HORIZONTAL DATUM IS REFERENCED TO THE MASSACHUSETTS STATE PLANE COORDINATE SYSTEM (NAD 1927).
 - CONTOUR INTERVAL EQUALS 1 FOOT.

**GENERAL ELECTRIC COMPANY
 PITTSFIELD, MASSACHUSETTS
 HILL 78 AND BUILDING 71 OPCAs**

TREE PLANTING PLAN

FIGURE
2