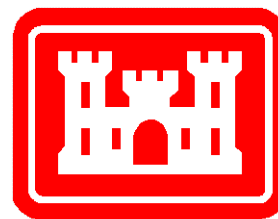


OSM VALLEY FILL STUDY

SAMPLES MINE VALLEY FILL #1



Appalachian
Regional
Coordinating
Center



**US Army Corps
of Engineers**
Pittsburgh District

JANUARY 2000

**OSM VALLEY FILL STUDY
SAMPLES MINE VALLEY FILL #1**

TABLE OF CONTENTS

GENERAL	1
DESCRIPTION OF HYDROLOGIC AND HYDRAULIC MODELS	2
Drainage Area	2
Precipitation	2
Soil Types	3
SCS Runoff Curve Numbers	3
Time of Concentration and Lag	4
Base Flow	4
Routing Reaches	4
PREMINING CONDITIONS	6
Drainage Area	6
Soil Types and SCS Runoff Curve Numbers	6
Time of Concentration and Lag	9
Base Flow	9
Routing Reaches	9
DURING MINING CONDITIONS	10
Drainage Area	10
Soil Types and SCS Runoff Curve Numbers	12
Time of Concentration and Lag	14
Base Flow	14
Routing Reaches	15
POST MINING CONDITIONS	16
Drainage Area	16
Soil Types and SCS Runoff Curve Numbers	18
Time of Concentration and Lag	20
Base Flow	21
Routing Reaches	21
HYDROLOGIC AND HYDRAULIC MODEL RESULTS	23
CONCLUSIONS	25
RECOMMENDATIONS	26
REFERENCES	27

GENERAL

The intent of this study was to determine the effect on storm runoff by changes to topography, soils, land use, vegetation, etc, caused by mountain top removal / valley fill surface coal mining operations. The changes to the 10 and 100 year flows and water surface elevations were determined and compared for the premining, during mining and post mining conditions.

The Samples Mine Valley Fill SH-1, located in the headwaters of the Seng Creek watershed in Boone County, West Virginia, was selected as the study site. The determination of the effects of changes to this drainage area represents a classic ungaged watershed study. The Seng Creek watershed is ungaged and no historic hydrologic information is available.

Corps of Engineers personnel from the Pittsburgh District (Walt Leput, Mark Zaitsoff, Ray Rush, Karen Taylor, Paul Donahue), the Hydrologic Engineering Center (HEC) (Harry Dotson) and the Waterways Experiment Station (WES) (Bill Johnson), and Office of Surface Mining (OSM) personnel (Don Stump, Dan Rahnama) visited the site.

Discussions were held to determine the methods of analysis that could be used to achieve the required results. Since great changes occur to the drainage area from pre to post mining conditions, the method of analysis needed to be able to subdivide it and model the changed areas as appropriate. Those involved concurred that the HEC-HMS (Hydrologic Modeling System) and HEC-RAS (River Analysis System) models would provide the methods of analysis and results needed for the study.

A HEC-HMS rainfall runoff model was used to evaluate the changes in flow magnitude. The runoff curve number (CN) method developed by the Soil Conservation Service (SCS) (now National Resource Conservation Service, NRCS) was used to determine the rainfall losses and the transformation from rainfall excess to runoff. This method has the advantage over regional parameter methods of rainfall-runoff determination of being based on observable physical properties of the watershed and of being able to model great changes in the runoff characteristics of the watershed.

A HEC-RAS hydraulic model was used to provide peak flow timing and routing input to the HEC-HMS hydrologic model. Flows generated by the hydrology model were input to the hydraulic model until the input and output from both models were consistent. The HEC-RAS model was then used to determine the changes in water surface elevation.

Topographic maps, aerial photographs and survey cross sections were used to formulate these hydrologic and hydraulic models.

This study was conducted under interagency agreement number 143868-IA98-1244, entitled "Model Analysis of Potential Downstream Flooding as a Result of Valley Fills and Large-Scale Surface Coal Mining Operations in Appalachia", between the Office of Surface Mining Reclamation and Enforcement and the U.S. Army Corps of Engineers. The Samples Mine Valley Fill #1 was the first site studied. The other three were the Samples Mine Valley Fill #2, #1 and 2 combined and the Hobet Mine Westridge Valley Fill in Lincoln County, WV. The study was initiated 24 September 1998.

DESCRIPTION OF HYDROLOGIC AND HYDRAULIC MODELS

Drainage Area

The Samples Mine Valley Fill SH-1 is located in the headwaters of the Seng Creek (tributary to the Big Coal and Kanawha Rivers) watershed on the eastern side of Boone County on the boundaries with Kanawha and Raleigh Counties, WV. The valley fill drainage area occupies the most upstream 0.7 square miles (13%) of the 5.55 square mile Seng Creek watershed.



Precipitation

Precipitation depths were determined using the National Weather Service publications HYDRO35 and Technical Paper 40 (TP40). HYDRO 35 provides maps of rainfall depths for 5, 15 and 60 minute durations, and 2 and 100 year frequencies. Equations are provided to calculate the precipitation depths for other frequencies. TP40 provides maps of precipitation depths for 2, 3, 6, 12 and 24 hour durations, and 1 to 100 year frequencies.

The Samples Mine is located on the eastern side of Boone County, WV, and that location was used to determine the precipitation depths. The following table shows the precipitation depths determined from HYDRO 35 and TP40 for the study area:

Duration	Frequency [YR]	
	10	100
	Depth [IN]	
5 MIN	0.54	0.74
15 MIN	1.09	1.57
1 HR	1.86	2.70
2 HR	2.38	3.44
3 HR	2.68	3.76
6 HR	3.05	4.44
12 HR	3.53	5.06
24 HR	3.98	5.65

These values were used for the premining, during mining and post mining conditions.

Soil Types

The Boone County, WV, soil survey was used to determine the soil types located in the study area.

The Seng Creek watershed is contained within the Dekalb-Pineville-Guyandotte general soil unit. The soils within this unit are described as "very steep, well drained soils that formed mainly in material weathered from sandstone; on mountainous uplands". The various soil types within this unit are the Cedarcreek-Rock outcrop (CgF), Dekalb-Pineville-Guyandotte association (DPF), Itmann channery loam (ImE), Kaymine-Rock outcrop complex (KrF), and Lily-Dekalb complex (LdE). The soil survey provides information on the detailed make up of the soil types, giving such information as component soil types, impervious area, etc.

The soil type subareas were traced onto the USGS topographic or regraded drainage maps for the premining and postmining conditions or the aerial photographs for the during mining condition; the areas of each soil type within the runoff subareas were determined by planimetry.

SCS Runoff Curve Numbers

The SCS runoff curve number (CN) method was used to convert precipitation depth into runoff excess. The curve number method is based on observable physical properties (soil and cover) of the runoff subareas.

A hydrologic soil group (HSG) characterizes the soil properties. The soil survey provides information on the detailed make up of the various soil types, making it possible to classify their component soils into HSG A (low runoff potential and high infiltration rates) through HSG D (high runoff potential and very low infiltration rates).

The cover takes into account the land use, vegetation type, surface treatment, etc.

The curve number is determined by the combination of the component soil types and cover. Curve numbers were selected from the tables published and provided by the SCS. It is possible to calculate areal weighted curve numbers for the overall soil types and each runoff subarea.

The curve number is also used to calculate the initial abstraction (all losses before runoff begins) for each runoff subarea. This initial abstraction (I_a)

is defined as 20% of the maximum available retention capacity of the soil after the runoff begins.

Time of Concentration and Lag

The time of concentration (T_c) of each runoff subarea is the amount of time that it takes for runoff to travel from the hydraulically most distant point to the outlet. It is the sum of the travel times (T_t) through the components of the runoff system.

The SCS method provides procedures for computing three travel time components for the time of concentration calculations: 1) sheet flow, 2) shallow concentrated flow, and 3) open channel flow.

Sheet flow is the runoff that occurs over the surface of the ground prior to becoming concentrated into small gullies. It is limited, by definition in the SCS method, to a maximum of 300 feet from the most upstream drainage divide. Shallow concentrated flow occurs from the end of sheet flow until the runoff enters a channel, by definition a stream shown on a USGS map. Appropriate changes in slopes were incorporated into the calculations of sheet and shallow concentrated flows. HEC-HMS computed values for the 10 and 100 year flows were input to the HEC-RAS hydraulic model of the valley fill drainage area to provide travel times for the channel flow component. The undisturbed portion of Seng Creek was used for the open channel flow component for the subareas below the valley fill operation.

The sum of the three travel time components is the time of concentration for a runoff subarea.

Several flow routes were considered when calculating the time of concentration for each runoff subarea. The different routes were selected to maximize the effect of each of the three components on the time of concentration. They maximized the flow distances for each component; the flow route giving the greatest time of concentration was selected.

The lag (L) is defined as the time from the center of mass of the excess rainfall to the peak of the calculated hydrograph. The lag is defined and calculated by the SCS method as 60% of the time of concentration.

Base Flow

A base flow of 2 CFS/SM was adopted for each runoff subbasin. Since the base flow contribution to the volume and peak discharge is minor, the recession constant and threshold were estimated in the HEC-HMS model to be 1 (no recession) and 0 CFS, respectively. This gives a constant base flow value of 2 CFS/SM during the entire flow hydrograph.

Routing Reaches

A HEC-RAS hydraulic model was used to determine the required inputs for the hydrologic routing. This model was formulated using survey cross sections and topographic map information. Channel reach lengths and slopes were estimated from the mining company's 1:6,000 scale maps that had a contour interval of 20'. Cross section geometry, channel roughness, reach lengths, energy slopes and average travel times from the HEC-RAS model were used as input to the Muskingum-Cunge and Lag routing methods in the HEC-HMS models.

The HEC-HMS hydrology models route upstream flows through intervening runoff subareas, then combine routed flows and local runoff at the downstream end of the routing reaches. This hydrologic routing provides the translation of the flow hydrograph along the channels and the timing and attenuation that reflect the storage characteristics of the channel and overbank sections of the routing reaches.

The HEC-RAS model was formulated to add in the local runoff in five increments through each routing reach, increasing the channel flow progressing downstream. The HEC-HMS model results show that there was little change in the routed flow through the routing reaches, so this assumption of local flow increasing along a routing reach was not affected by routing considerations.

PREMINING CONDITIONS

Drainage Areas`

The premining drainage area was delineated on USGS 1:24,000 scale topographic maps (Dorothy and Eskdale quadrangles) and on a 1:6,000 scale regraded drainage map provided by the coal company. The premining drainage area encompasses 0.68 square miles.

The drainage area was divided into six runoff subareas to define the premining condition. These subareas were selected to define tributary areas and hydrologic routing reaches. There were no significant differences in land use or soil type to justify any further subdivision.

The following table shows the runoff subareas for the premining condition:

Runoff Subarea	Description	Area		
		[ACRES]	[MI ²]	[%]
A	Most downstream area	37.28	0.06	8.5
B	Right bank tributary	52.94	0.08	12.0
C	Subarea below proposed valley fill	46.23	0.07	10.5
D	Main channel	155.62	0.24	32.5
E	Right tributary	71.88	0.11	16.3
F	Left tributary	77.13	0.12	17.5
Total		441.08	0.68	100

Plate 1 shows the runoff subareas.

Soil Types and SCS Runoff Curve Numbers

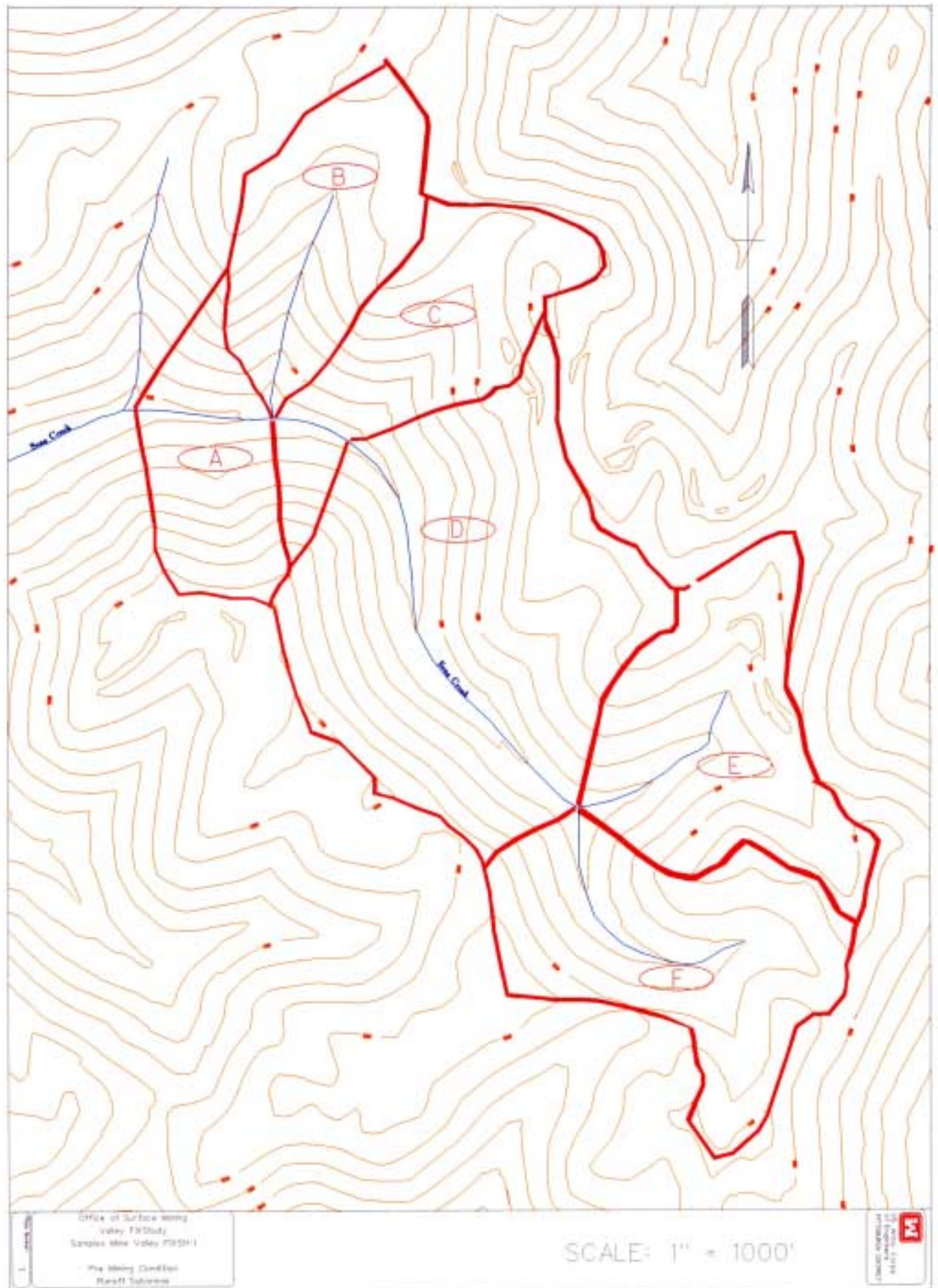
The following table shows the soil types and their percent distribution within the runoff subareas for the premining condition:

Runoff Subarea	Soil Type				
	CgF	DPF	ImE	KrF	LdE
	Percent Distribution				
A	8.7	73.6		16.5	1.2
B	2.1	87.2	10.7		
C	18.1	77.9		4.0	
D	18.5	66.3		2.6	12.6
E	29.9	46.1			24.0
F	30.1	50.3			19.6
Total	17.9	66.8	1.8	3.9	9.6

Plate 2 shows the soil type subareas.

This table shows that the Dekalb-Pineville-Guyandotte association (DPF) makes up the majority (67%) of the drainage area.

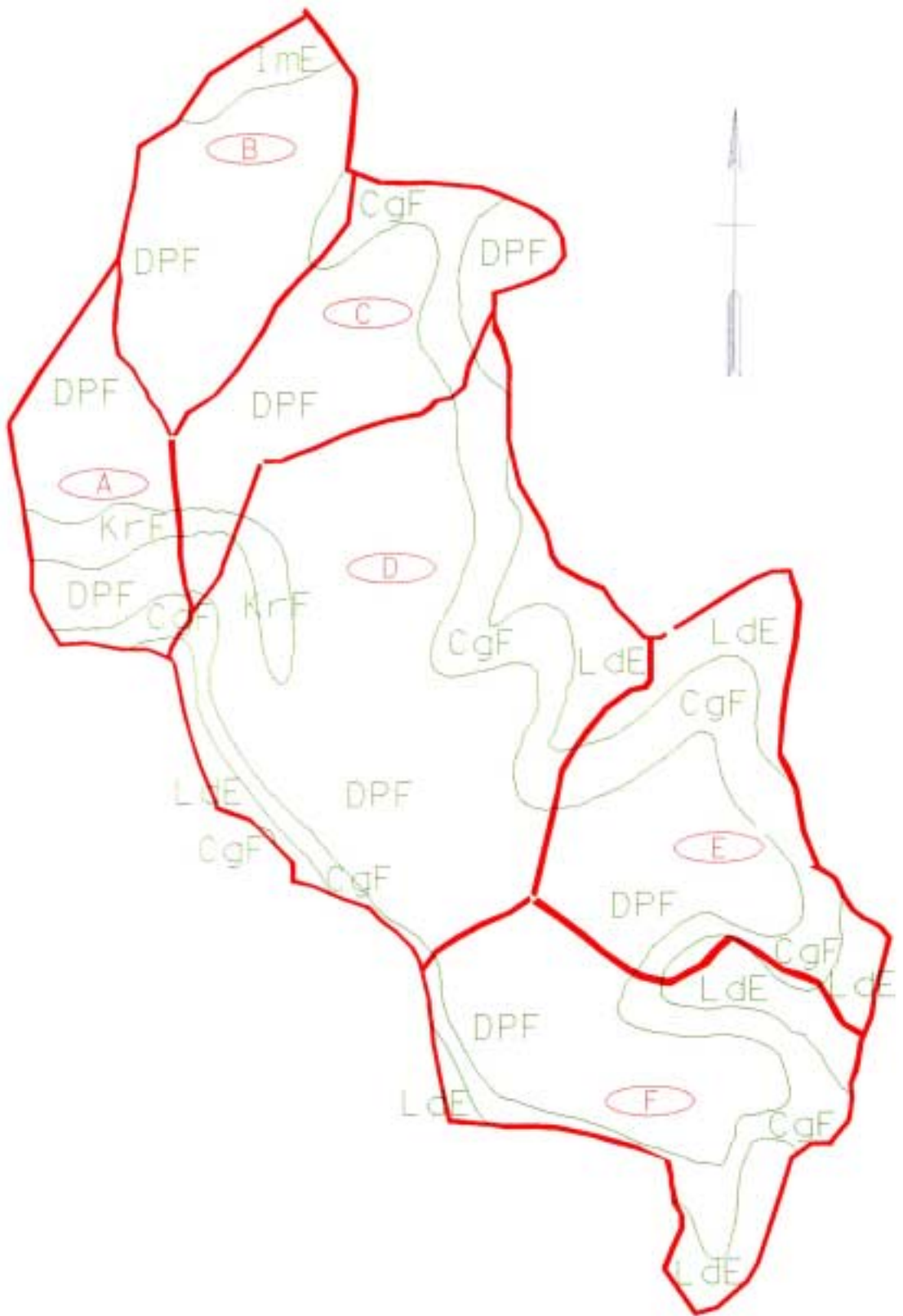
The premining land use for the Seng Creek watershed is wooded with a fair hydrologic condition due to its disturbance by previous logging and surface mining activity.



Office of Surface Water
Valley FFD Study
Sage Lake Valley FFD-1
The Mining Condition
Basin Subarea

SCALE: 1" = 1000'

CONCRETE INDUSTRIES
14477 100TH AVE
VANCOUVER, BC
V7V 1M7

Office of General Services
 State of Florida
 Tallahassee, Florida 32304
 File # 2019-00000
 Job Type: 000000

SCALE: 1" = 1000'



The following table shows the results of the weighted curve number calculations for the premining condition:

Runoff Subarea	Weighted CN	% Impervious	I _a [IN]
A	68	3.8	0.94
B	67	0.3	0.99
C	68	3.3	0.94
D	68	3.2	0.94
E	68	4.5	0.94
F	68	4.5	0.94

Time of Concentration and Lag

The following table shows the results of the time of concentration and lag calculations for the premining condition:

Runoff Subarea	Frequency [YR]			
	10		100	
	Time of Concentration	Lag	Time of Concentration	Lag
[MIN]				
A	20	12	20	12
B	32	19	30	18
C	19	12	19	11
D	36	21	34	20
E	39	23	37	22
F	39	23	37	22

Base Flow

The premining base flow values were as follows:

Runoff Subarea	Area [MI ²]	Base Flow [CFS]
A	0.06	0.12
B	0.08	0.17
C	0.07	0.14
D	0.24	0.49
E	0.11	0.22
F	0.12	0.24

Routing Reaches

The drainage area was divided into six runoff subareas to model the premining condition. Four reaches connected the runoff subareas and route the flows through the drainage area.

The Muskingum-Cunge method of hydrologic routing was used to route the runoff flows through the drainage area. This method has the advantage over others of using physically based parameters that can be modified to represent changes to the watershed conditions.

DURING MINING CONDITIONS

Drainage Areas

The during mining drainage area was delineated on 1:200 and 1:600 scale aerial photographs and 1:6,000 scale regraded drainage map provided by the coal company. The during mining drainage area encompasses 0.64 square miles.

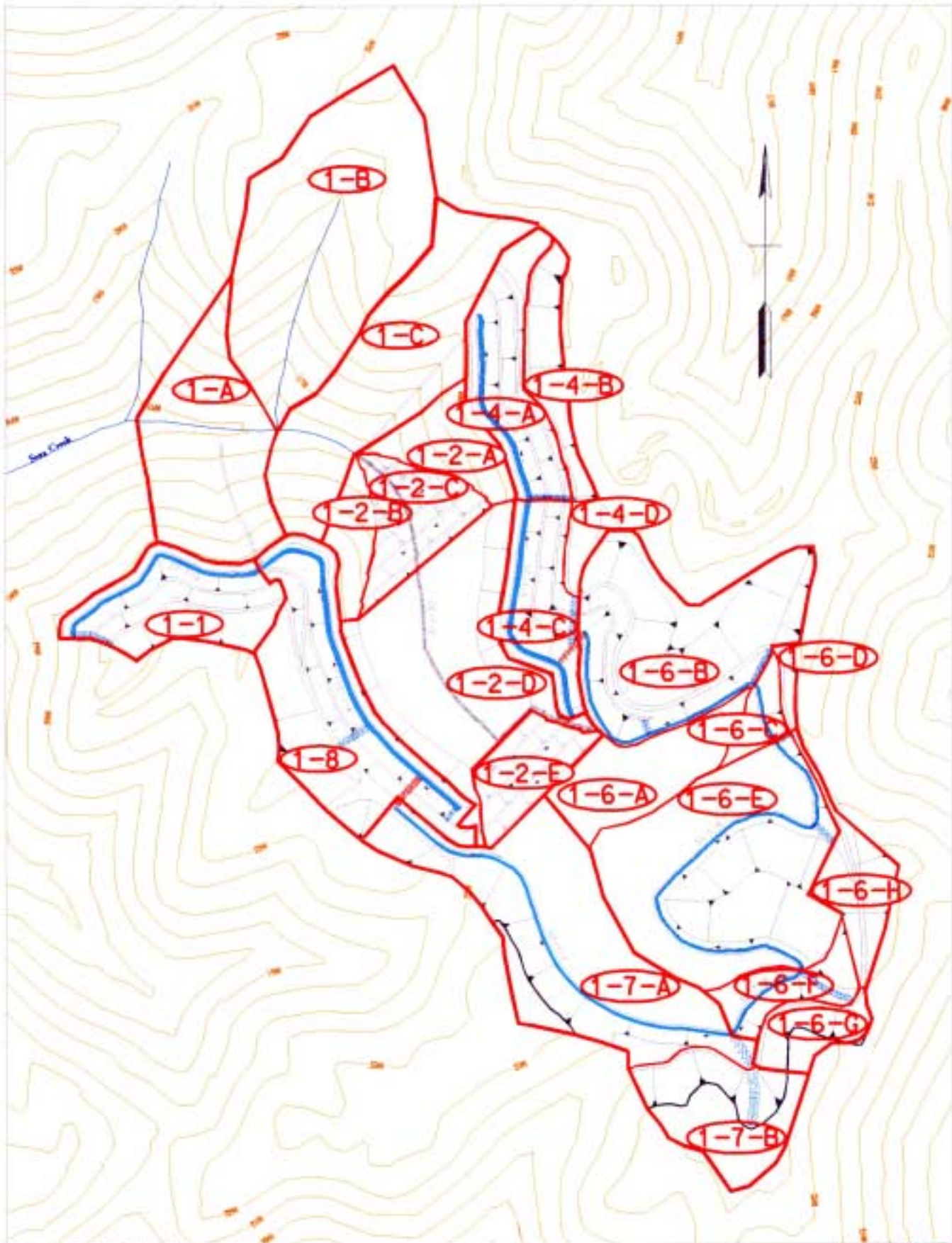
The drainage area was divided into ten runoff subareas to define the during mining condition. These subareas were selected to define tributary areas created by the ongoing valley fill operation and the hydrologic routing reaches connecting them. The downstream end is relatively unchanged from premining conditions; the unchanged land use, soil types and tributary justified further subdivision.

The ongoing valley fill operation has created a very compartmented drainage area with a confused runoff system. There are no established drainage channels within the valley fill area. The aerial photographs and field reconnaissance were used to divide the drainage area into four tributary areas with ten runoff subareas. Two of the subareas on the valley fill contained significant depressions, were judged to not contribute to surface runoff flows leaving the valley fill area, and were treated as sinks. The four tributary areas were: 1) below the valley fill, 2) the valley fill area, 3) the right noncontributing area, and 4) the left noncontributing area. The following table shows the runoff subareas for the during mining condition:

Runoff Subarea	Description	Area		
		[ACRES]	[MI ²]	[%]
A	Most downstream area	37.11	0.06	9.0
B	Right bank tributary	18.37	0.03	4.5
C	Subarea below valley fill	33.78	0.05	8.2
D-1-A	Face of valley fill	13.63	0.02	3.3
D-1-B	Right down valley area	24.58	0.04	6.0
D-1-C	Right up valley area	69.26	0.11	16.8
D-1-D	Left down valley area	85.45	0.13	20.7
D-1-E	Left up valley area	58.30	0.09	14.2
D-2	Right noncontributing area	61.12	0.10	14.9
D-3	Left noncontributing area	9.86	0.02	2.4
Total		411.46	0.64	100

This area represents a 7% decrease from premining to during mining conditions and mainly reflects differences in the disturbed topography on the eastern side of the drainage area.

Plate 3 shows the runoff subareas.



Office of Surface Mining
 Valley F&S Unit
 Simplex Mine Valley F&S-1
 Post Mining Condition
 Runoff Subarea

SCALE: 1" = 1000'



Soil Types and SCS Runoff Curve Numbers

The aerial photographs show the area that is being covered by the ongoing valley fill operation. This area was considered to be disturbed surface mine area with raw (RS) and graded (GS) spoils.

The following table shows the soil types and their percent distribution within the runoff subareas for the during mining condition:

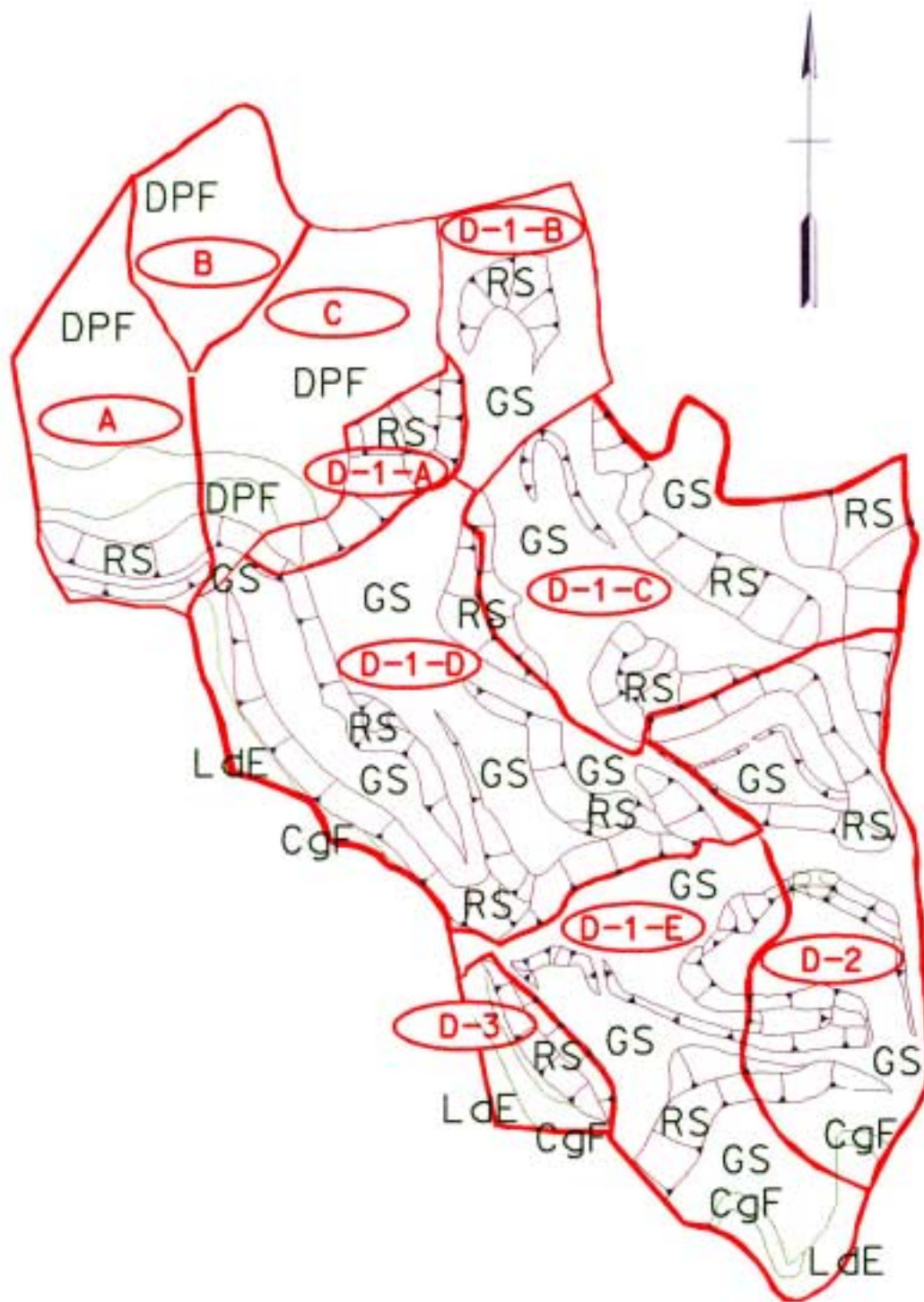
Runoff Subarea	Soil Type						
	CgF	DPF	KrF	LdE	MnF	RS	GS
	Percent Distribution						
A		62.6	17.4	0.7		16.2	3.1
B		100					
C		84.7	11.5			2.7	1.1
D-1-A						100	
D-1-B						19.5	80.5
D-1-C						50.5	49.5
D-1-D	0.8			6.0		38.1	55.1
D-1-E	3.4			7.0	3.6	24.1	61.9
D-2	1.8			2.5		68.1	27.6
D-3	20.8			20.8		58.4	
Total	1.4	17.1	2.5	3.2	0.5	37.5	37.8

Plate 4 shows the soil type subareas.

This table shows that the disturbed surface mine areas in the ongoing valley fill operation makes up the majority (75%) of the land use in the drainage area.

The land use for the undisturbed portion of the valley fill drainage area is wooded with a fair hydrologic condition due to its disturbance by previous logging and surface mining activity.

The following table shows the results of the weighted curve number calculations for the during mining condition:



Runoff Subarea	Weighted CN	% Impervious	I _a [IN]
A	71	2.6	0.82
B	66		1.03
C	67	1.0	0.99
D-1-A	88		0.27
D-1-B	85		0.35
D-1-C	86		0.33
D-1-D	84	0.2	0.38
D-1-E	83	0.2	0.41
D-2	86	0.3	0.33
D-3	81	3.1	0.47

Time of Concentration and Lag

The aerial photographs were used to define the distance for sheet flow. The runoff was considered to have concentrated once it encountered the ongoing valley fill operation. No open channels were formed in the ongoing valley fill operation and there were no open channel portions of the time of concentration computed.

The following table shows the results of the time of concentration and lag calculations for the during mining condition:

Runoff Subarea	Frequency [YR]			
	10		100	
	Time of Concentration	Lag	Time of Concentration	Lag
[MIN]				
A	21	13	19	12
B	21	13	19	12
C	29	17	26	15
D-1-A	1	1	1	1
D-1-B	9	5	9	5
D-1-C	15	9	15	9
D-1-D	15	9	15	9
D-1-E	34	21	34	21
D-2	30	18	30	18
D-3	19	11	19	11

Base Flow

The during mining base flow values were as follows:

Runoff Subarea	Area [MI ²]	Base Flow [CFS]
A	0.06	0.12
B	0.03	0.06
C	0.05	0.11
D-1-A	0.02	0.04
D-1-B	0.04	0.08
D-1-C	0.11	0.22
D-1-D	0.13	0.27
D-1-E	0.09	0.18
D-2	0.10	0.19
D-3	0.02	0.03

Routing Reaches

The valley fill drainage area was divided into ten runoff subareas to model the during mining condition. Eight reaches connected the runoff subareas and routed the flows through the drainage area.

Two methods of hydrologic routing were used to route the runoff flows through the drainage area. The Lag method was used for the subareas within the ongoing valley fill operation; the amount of lag was computed from the shallow concentrated flow component of the travel time computations. Since these channels have little if any storage they were modeled to translate the flow hydrograph with no attenuation. The Muskingum-Cunge method was used to route the runoff flows through the undisturbed portion of the drainage area. This method has the advantage over others of using physically based parameters that can be modified to represent changes to the watershed conditions.

The flow hydrographs were also routed through the two sediment ponds located downstream of the ongoing valley fill operation. These ponds do not have low flow outlets and all flow passes over their spillways. Therefore, their pools are at the spillway elevation and little or no storage is available. The storage, elevation and outflow relationships were determined and input to the HEC-HMS hydrology models; the results confirmed that the sediment ponds do not cause any attenuation of the flow hydrographs.

POST MINING CONDITIONS

Drainage Areas

The post mining drainage area was delineated on a 1:6,000 scale regraded drainage map provided by the coal company. The post mining drainage area encompasses 0.74 square miles.

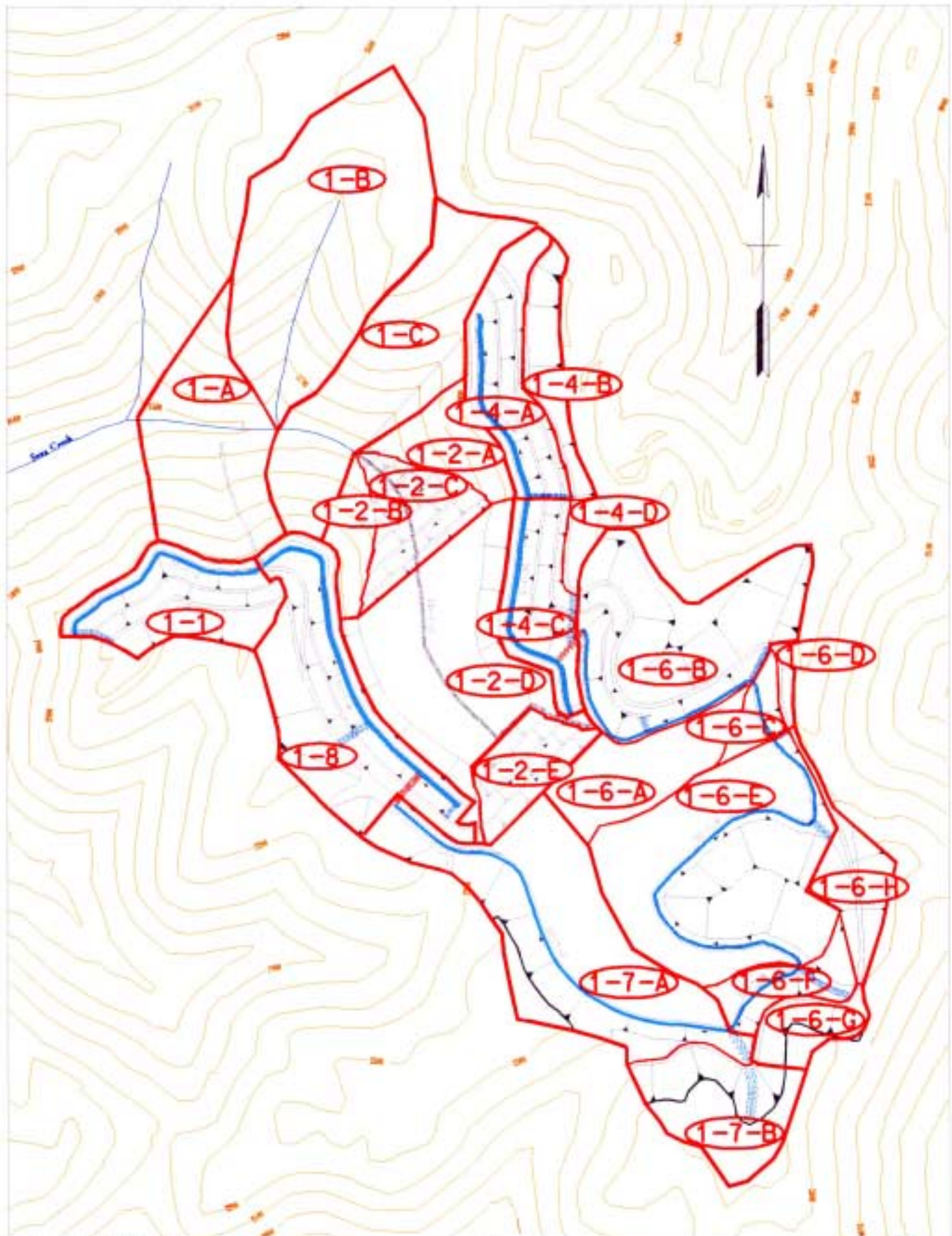
The drainage area was divided into fifteen runoff subareas to define the post mining condition. These subareas were selected to define tributary areas created by sediment and diversion ditches in the regrading plan and the hydrologic routing reaches connecting them. The downstream end of the drainage area is relatively unchanged from premining conditions; the unchanged land use, soil types and tributary justified further subdivision. The regraded drainage map shows that the post mining land use is reclaimed valley fill and backstack areas for 72% of the drainage area.

The regraded drainage plan used sediment and diversion ditches to create four tributary areas. These four tributary areas were: 1) below the valley fill, 2) the valley fill area, 3) flows diverted around the left side of the valley fill, and 4) flows diverted around the right side of the valley fill. The following table shows the runoff subareas for the post mining condition:

Runoff Subarea	Description	Area		
		[ACRES]	[MI ²]	[%]
1-A	Most downstream area	29.78	0.05	6.3
1-B	Right bank tributary	53.48	0.08	11.2
1-C	Subarea below valley fill	36.06	0.06	7.6
1-2-A	Right abutment of lower valley fill	7.21	0.01	1.5
1-2-B	Left abutment of lower valley fill	6.34	0.02	1.3
1-2-C	Face of lower valley fill	12.00	0.02	2.5
1-2-D	Top of lower valley fill	37.23	0.06	7.9
1-2-E	Face of upper valley fill	9.55	0.01	2.0
1-1	Downstream left diversion area	18.37	0.03	3.9
1-8	Middle left diversion area	32.37	0.05	6.8
1-7-AB	Upstream left diversion area	61.39	0.10	12.9
1-4-AB	Downstream right diversion area	25.36	0.04	5.4
1-4-CD	Middle right diversion area	16.89	0.03	3.5
1-6-AD	Middle right diversion area	57.05	0.09	12.0
1-6-EH	Upstream right diversion area	71.49	0.10	15.2
Total		474.57	0.74	100

This area represents an 8% increase from pre to post mining conditions and mainly reflects differences in the regraded topography on the southwest side of the drainage area.

Plate 5 shows the runoff subareas.



Office of Surface Mining
 Valley FISH-1
 Simple Mine Valley FISH-1
 Final Mining Conditions
 Final Subarea

SCALE: 1" = 1000'



Soil Types and SCS Runoff Curve Numbers

The regraded drainage map shows the area that was covered by the valley fill and regraded backstacks. These areas were considered to be reclaimed surface mine (RSM) areas.

The following table shows the soil types and their percent distribution within the runoff subareas for the post mining condition:

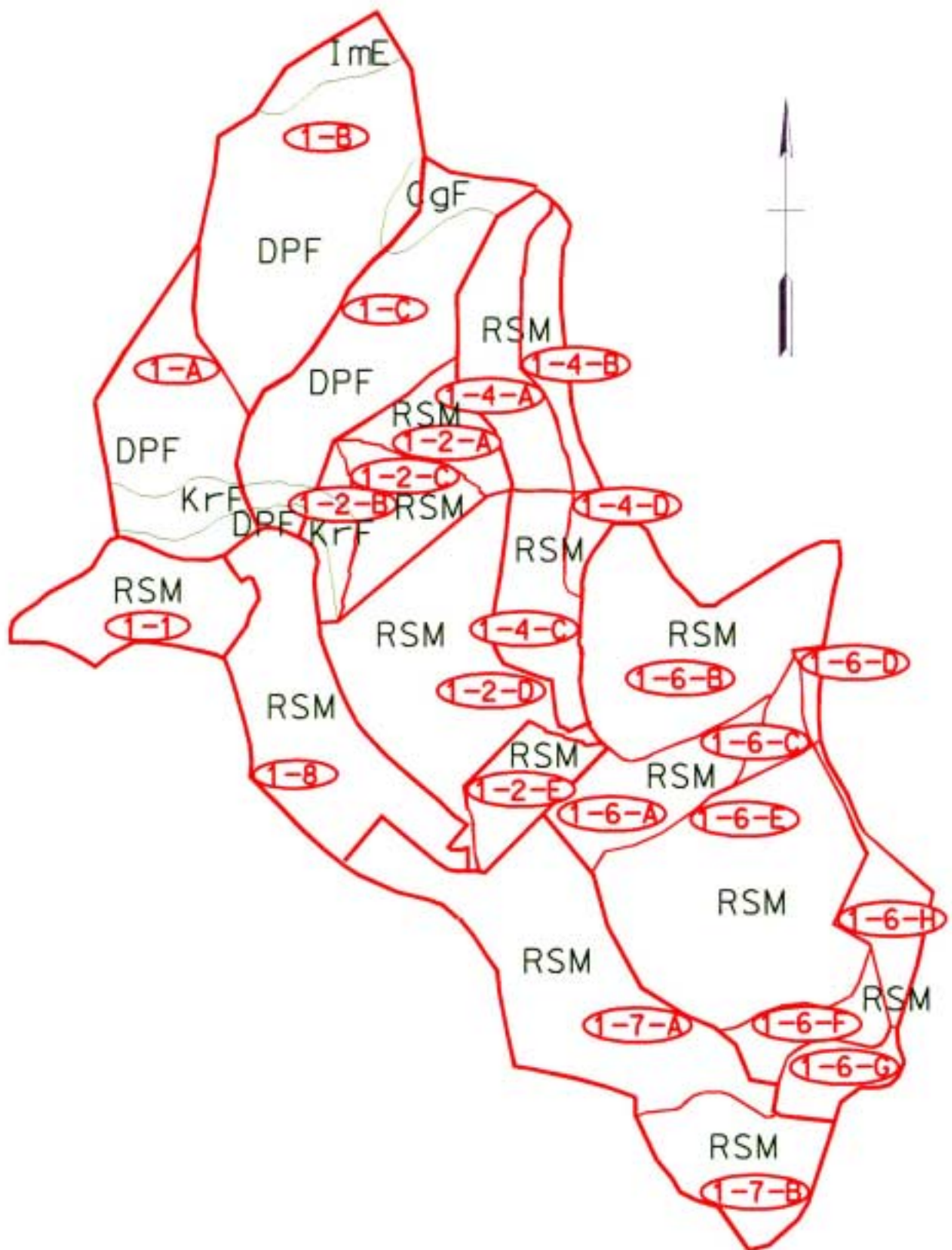
Runoff Subarea	Soil Type				
	CgF	DPF	ImE	KrF	RSM
Percent Distribution					
1-A		77.8		22.5	
1-B	1.9	88.9	9.2		
1-C	13.0	82.0		5.0	
1-2-A		100			
1-2-B		66.4		33.6	
1-2-C					100
1-2-D					100
1-2-E					100
1-1					100
1-8					100
1-7-AB					100
1-4-AB					100
1-4-CD					100
1-6-AD					100
1-6-EH					100
Total	1.2	23.5	1.0	2.2	72.1

Plate 6 shows the soil type subareas.

This table shows that reclaimed surface mine areas make up the majority (72%) of the land use in the drainage area.

The land use for the undisturbed portion of the valley fill drainage area is wooded with a fair hydrologic condition due to its disturbance by previous logging and surface mining activity.

The following table shows the results of the weighted curve number calculations for the post mining condition:



Runoff Subarea	Weighted CN	% Impervious	I _a [IN]
1-A	67	3.3	0.99
1-B	67	0.2	0.99
1-C	67	2.8	0.99
1-2-A	64	5.1	1.13
1-2-B	65		1.03
1-2-C	75		0.67
1-2-D	75		0.67
1-2-E	75		0.67
1-1	75		0.67
1-8	75		0.67
1-7AB	75		0.67
1-4-AB	75		0.67
1-4-CD	75		0.67
1-6-AD	75		0.67
1-6-EH	75		0.67

Time of Concentration and Lag

The regraded drainage map was used to define the distance for sheet flow. The runoff was considered to have concentrated once it encountered a road or bench and continued to flow downslope to a sediment ditch. The sediment ditches were considered the open channel portion of the flow components.

The following table shows the results of the time of concentration and lag calculations for the post mining condition:

Runoff Subarea	Frequency [YR]			
	10		100	
	Time of Concentration	Lag	Time of Concentration	Lag
	[MIN]			
1-A	18	11	18	11
1-B	36	21	33	20
1-C	25	15	25	15
1-2-A	15	9	15	9
1-2-B	14	8	14	8
1-2-C	11	6	9	6
1-2-D	22	13	20	12
1-2-E	20	12	16	9
1-1	25	15	23	14
1-8	19	11	17	10
1-7-AB	52	31	43	26
1-4-AB	10	6	8	5
1-4-CD	14	9	13	8
1-6-AD	34	20	32	19
1-6-EH	50	30	43	26

Base Flow

The post mining base flow values were as follows:

Runoff Subarea	Area [MI ²]	Base Flow [CFS]
1-A	0.05	0.09
1-B	0.08	0.17
1-C	0.06	0.11
1-2-A	0.01	0.02
1-2-B	0.01	0.02
1-2-C	0.02	0.04
1-2-D	0.06	0.12
1-2-E	0.01	0.03
1-1	0.03	0.06
1-8	0.05	0.10
1-7-AB	0.10	0.19
1-4-AB	0.04	0.08
1-4-CD	0.03	0.05
1-6-AD	0.09	0.18
1-6-EH	0.10	0.22

Routing Reaches

The valley fill drainage area was divided into fifteen runoff subareas to model the post mining condition. Fifteen reaches connected the runoff subareas and routed the flows through the drainage area.

Two methods of hydrologic routing were used to route the runoff flows through the drainage area. The Lag method was used for channels with slopes greater than 10% (flumes, natural drains and channel down the face of the lower valley fill); the amount of lag was taken as the average travel time through the reach from the HEC-RAS model. Since these channels have little if any storage they were modeled to translate the flow hydrograph with no attenuation. The Muskingum-Cunge method was used to route the runoff flows through the flatter sloped (2%) sediment and diversion ditches and the undisturbed portion of the drainage area. This method has the advantage over others of using physically based parameters that can be modified to represent changes to the watershed conditions.

HYDROLOGIC AND HYDRAULIC MODEL RESULTS

The HEC-HMS hydrology models were formulated to calculate the outflow from the Valley Fill #1 drainage area at the downstream permit limit.

The HEC-RAS hydraulic model was formulated to calculate the corresponding stages. Survey sections were taken and approximately 800' of the undisturbed Seng Creek channel downstream of the permit limit was modeled. The flows from the HEC-HMS model were used to perform the backwater analysis.

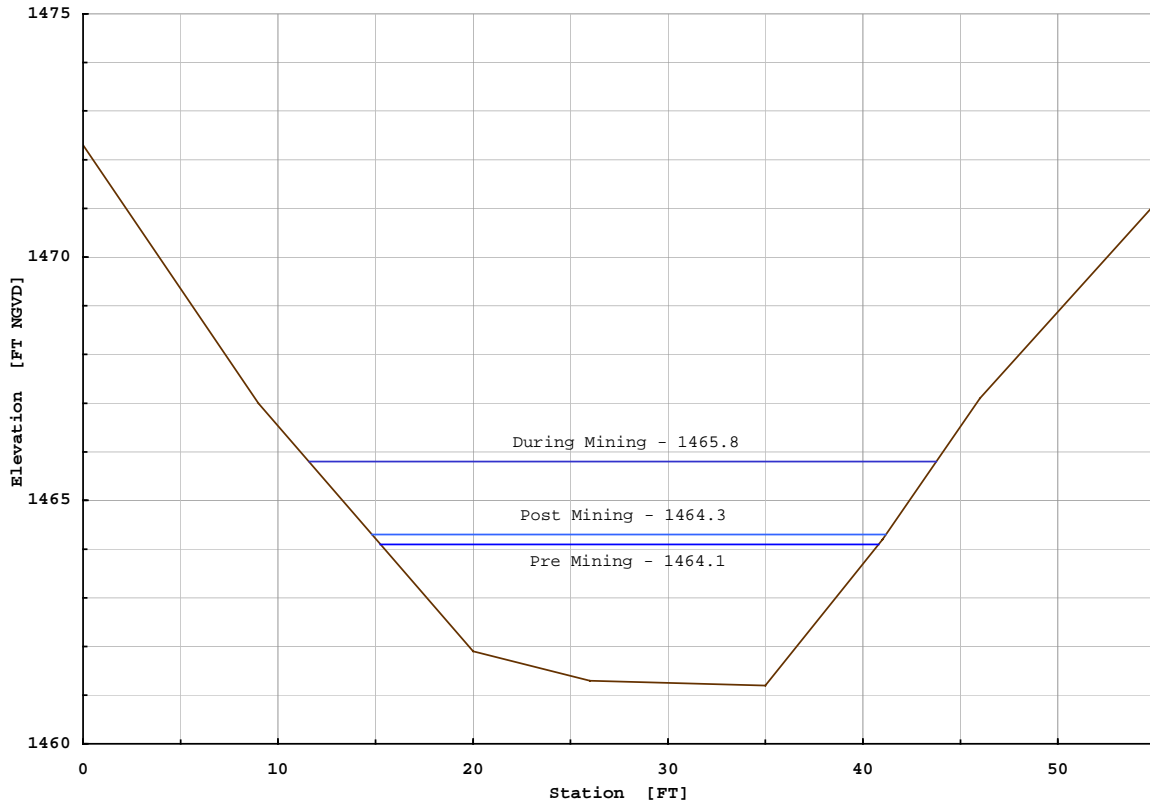
The following table shows the 10 and 100 year flows and water surface elevations:

Frequency [YR]	Pre Mining		During Mining		Post Mining	
	Flow [CFS]	Elevation [FT NGVD]	Flow [CFS]	Elevation [FT NGVD]	Flow [CFS]	Elevation [FT NGVD]
10	330	1464.1	525	1465.8	376	1464.3
100	742	1465.5	931	1466.8	832	1465.8

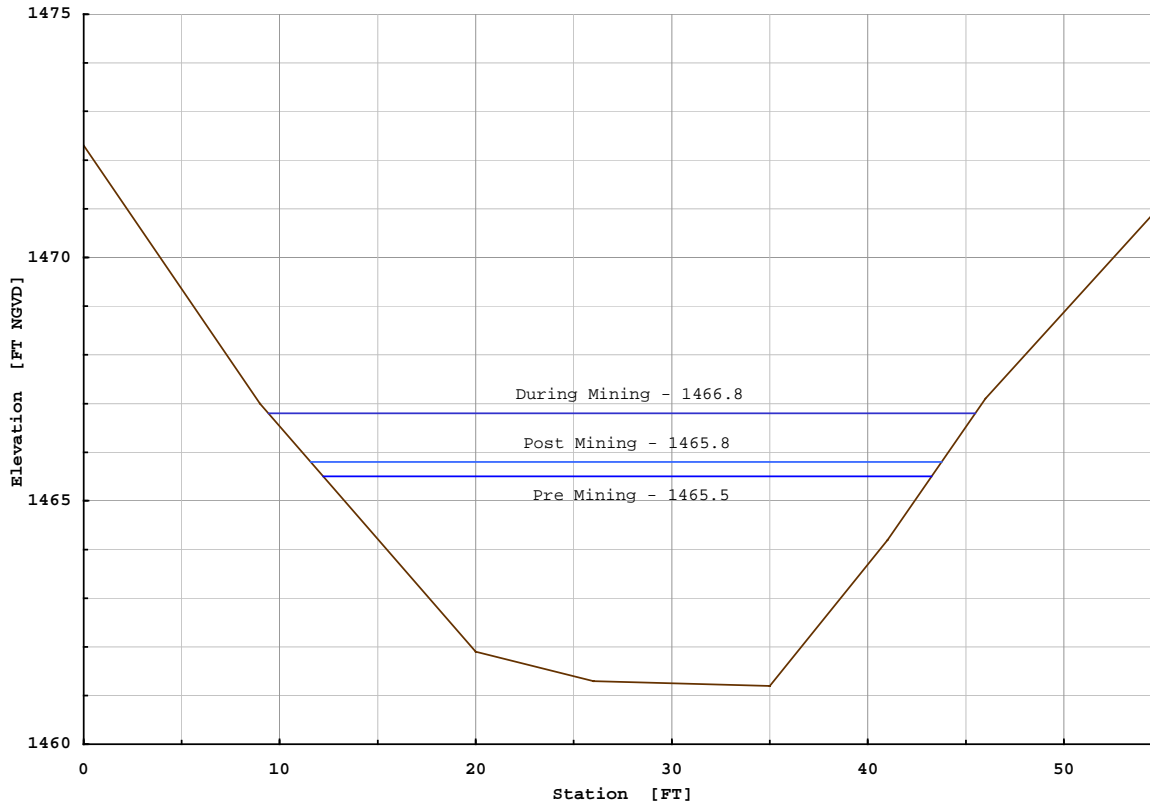
These results show a 25-59% (10-100 YR) increase in discharge from premining conditions as the area is disturbed during mining operations; this decreases to about 13% after the area is reclaimed in the post mining conditions. The stage increases by 1.3-1.7' from pre to during mining operations; this decreases to about a 0.2-0.3' increase for pre to post mining conditions.

The following cross sections show comparisons of the water surfaces for each condition.

COMPARISON OF STAGES FOR 10 YEAR FLOW



COMPARISON OF STAGES FOR 100 YEAR FLOW



CONCLUSIONS

1. The SCS, HEC-HMS and HEC-RAS methods are appropriate for computing flows and stages from a valley fill operation.
2. The information typically contained in a permit application is suitable for hydrologic and hydraulic analysis. Some interpretation of the information, aerial photos and maps is required.
3. Required additional information about soil types is available from soil surveys.
4. Field views are required to determine the type and extent of cover for HEC-HMS, to verify drainage routes, etc. The during mining condition produces a very confused runoff system which changes almost daily and must be verified on the ground.
5. Field surveys are required to determine channel size and compute stages in HEC-RAS.
6. Subdivision of the valley fill area by soil type, slopes, etc, is required to model the runoff characteristics of each subarea.
7. The flat slopes created on the top surfaces of the valley fills and the regraded back stacks help to reduce peak flows by increasing the runoff time of concentration. The long flow paths created by sediment ditches help to reduce peak flows by increasing the runoff travel times.
8. The ongoing valley fill operation creates a very compartmented drainage area with a confused runoff system that changes almost daily. Any 'snapshot' of the ongoing operation may not be representative of the current or worst case condition.
9. Differences in stages are very site specific and may depend on conditions in receiving streams. Stage differences cannot be translated up or down stream away from the computed location and results should not be generalized. Unchanged watershed and channel downstream of a valley fill operation may tend to return stages to the premining condition.
10. This study shows that an ongoing valley fill operation will increase the discharge from 25-59% (10-100 YR) from premining conditions; this decreases to about 13% after the area is reclaimed in the post mining conditions. The stage increases by 1.3-1.7' from pre to during mining operations; this decreases to about a 0.2-0.3' increase for pre to post mining conditions.

RECOMMENDATIONS

1. The site should be analyzed with a mature growth of trees covering all or part of the drainage area to represent a future condition. Incremental analysis of increasing tree cover should not be undertaken.
2. Valley fill operations should be sized and located to minimize their impacts.
3. Recording streamflow and rainfall gages should be installed and maintained in a valley fill area from before mining begins until after the area is reclaimed. Data logger type streamflow gages should be installed at good hydraulic control points and be set to record at five minute intervals. Tipping bucket type rainfall gages should be located to capture representative rainfall amounts. A formal maintenance and data retrieval/reduction plan should be established. Analysis of actual rainfall/runoff relations should be conducted.

REFERENCES

- Engineering Field Manual 210, Soil Conservation Service, US Department of Agriculture, 1 August 1989
- EM 1110-2-1417, Flood-Runoff Analysis, US Army Corps of Engineers, 31 August 1995
- EM 1110-2-1601, Hydraulic Design of Flood Control Channels, US Army Corps of Engineers, 1 July 1991
- Five to 60 Minute Precipitation Frequency for the Eastern and Central United States, Memo NWS HYDRO 35, National Weather Service, US Department of Commerce, 1977
- HEC-1 Flood Hydrograph Package User's Manual, Hydrologic Engineering Center, US Army Corps of Engineers, 1990
- HEC-HMS Hydrologic Modeling System User's Manual, Hydrologic Engineering Center, US Army Corps of Engineers, 1998
- HEC-RAS River Analysis System User's Manual, Hydrologic Engineering Center, US Army Corps of Engineers, 1998
- Hydrologic Analysis of Ungaged Watersheds using HEC-1, Training Document No. 15, Hydrologic Engineering Center, US Army Corps of Engineers, 1982
- National Engineering Handbook, Section 4, Soil Conservation Service, US Department of Agriculture, 1972
- Open Channel Hydraulics, V.T. Chow, McGraw Hill, 1959
- Rainfall Frequency Atlas of the United States for Durations from 30 Minutes to 24 Hours and Return Periods from 1 to 100 Years. Technical Paper No. 40, National Weather Service, US Department of Commerce, 1961
- Sediment Yield Prediction from Black Mesa Coal Spoils, Martin M. Fogel et al, ASAE Paper Number 79-2539, American Society of Agricultural Engineers, December 1979
- Small Surface Coal Mine Operators Handbook, Water Resources Protection Techniques, Office of Surface Mining, Department of the Interior, 1980
- Soil Survey of Boone County, West Virginia, Soil Conservation Service, US Department of Agriculture, Soil Conservation Service, June 1994
- Soil Survey of Fayette and Raleigh Counties, West Virginia, Soil Conservation Service, US Department of Agriculture, Soil Conservation Service, March 1975
- Soil Survey of Lincoln County, West Virginia, Soil Conservation Service, US Department of Agriculture, Soil Conservation Service, unpublished draft
- Computer-Assisted Floodplain Hydrology and Hydraulics, Daniel H. Hogan, McGraw-Hill, 1997
- Urban Hydrology of Small Watersheds, Technical Release 55, Soil Conservation Service, US Department of Agriculture, 1986
- USGS 7.5 minute topographic maps, Dorothy and Eskdale quadrangles

