

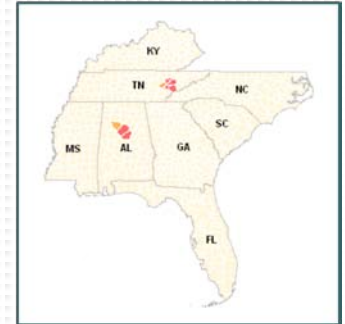
# Session 3

## National Initiatives, Local Implementation

The slide features a dark blue background. The title is centered in white, sans-serif font. Below the title, there is a thick teal horizontal bar. Underneath this bar, the background transitions into a white dotted pattern. On the right side, there are several horizontal lines: a thin teal line, a thin white line, and a double white line.



## Partnership for Sustainable Communities



### *Session 3:*

# *National Programs Local Implementation REGION 4*

HUD/DOT/EPA/USDA

Partnership for Sustainable Communities

October 26, 2011

# Session Goals

---



In this **30 minute** session we will:

- Hear about how several partner agencies are incorporating "sustainability" principles into their core programs.
- Learn how Region 4 agencies are implementing the concept of "sustainability" in their technical assistance, grants and outreach activities.
- Ask those on the phone and in Atlanta to offer ideas and discuss their investments.

National Programs – Local Implementation

**National**

# HUD Programs

---



Providing **“Green”** Public Housing

- Energy Efficiency & Water Conservation
- Energy Star Appliance Installations
- Renewable Energy & Green Construction Practices



National Programs – Local Implementation

**Region 4**

# **HUD Implementation**

---



## **CASE STUDIES**

- **Housing Authority of Owensboro, KY**
- **Housing Authority of Henderson, KY**

National Programs – Local Implementation

# National DOT Initiatives



## FTA SUSTAINABLE COMMUNITIES FUNDING:



- Strengthening the link between transit planning and community planning.
- Increasing access to employment, education facilities, and other community destinations
- Stimulating increased participation
- Leveraging resources

## Tools

- FTA Sustainability Toolkit



National Programs – Local Implementation

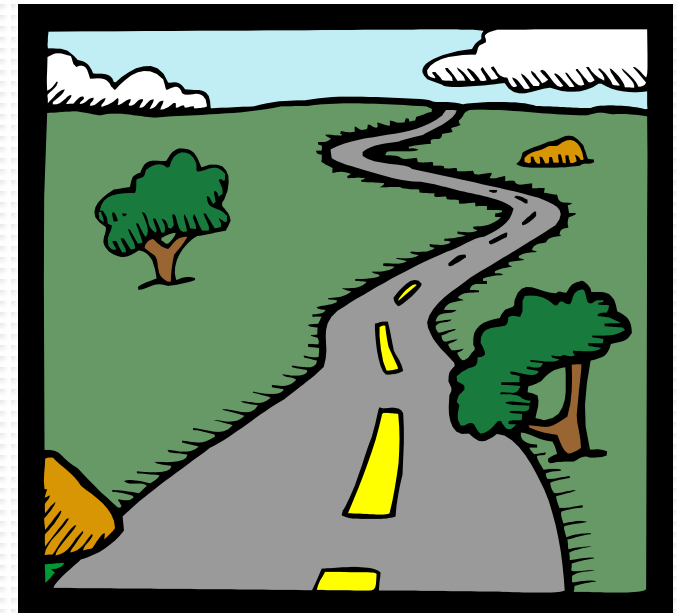
**National**

# DOT Initiatives

---

## **FHWA**

- Life Cycle Costs
- Green Streets
- Green Highway Partnership
- Sustainable Highway
- Context Sensitive Design
  
- Tools
  - FHWA Performance Measures for Livability (coming soon)



National Programs – Local Implementation

**National**

# **USDA Initiatives**

---



**USDA has over 40 loan/grant programs**

- **Water and Sewer**
- **Home Loans/Home Repair Grants**
- **Community Facilities**
- **Energy Efficiency/Energy Production Grants**

National Programs – Local Implementation

**Region 4**

# **USDA Implementation**



- Walmart Renovated to become a Health Dept

  - Haywood County, NC

- Self Help Housing

- Town Hall Police Department



# National EPA Initiatives

---



- Required States to set aside 20% of ARRA funds for “green” infrastructure investments made through State Revolving Loan Funds
- More investment in community-level assistance such as Greening America’s Capitals, Building Blocks
- Supporting FEMA disaster response with sustainable communities approaches



National Programs – Local Implementation

## Region 4

# EPA Implementation



- Considering how to relate PSC activities and outcomes to the annual measures we report on
- Evaluating need for training on sustainability
- Re-organization will place Sustainability coordination within the Regional Administrator's Office

# Challenges

---

- Training needs within agencies
- Providing more outreach to our state and local partners
- Better coordination among federal partners to enhance project success



# Summary

---



- We hope to better incorporate sustainability into performance measures and expectations for all our core programs so that the approach will be a part of our daily routine and become a way of life.
- What are doing to move the ball down the field?  
Please share your activities

