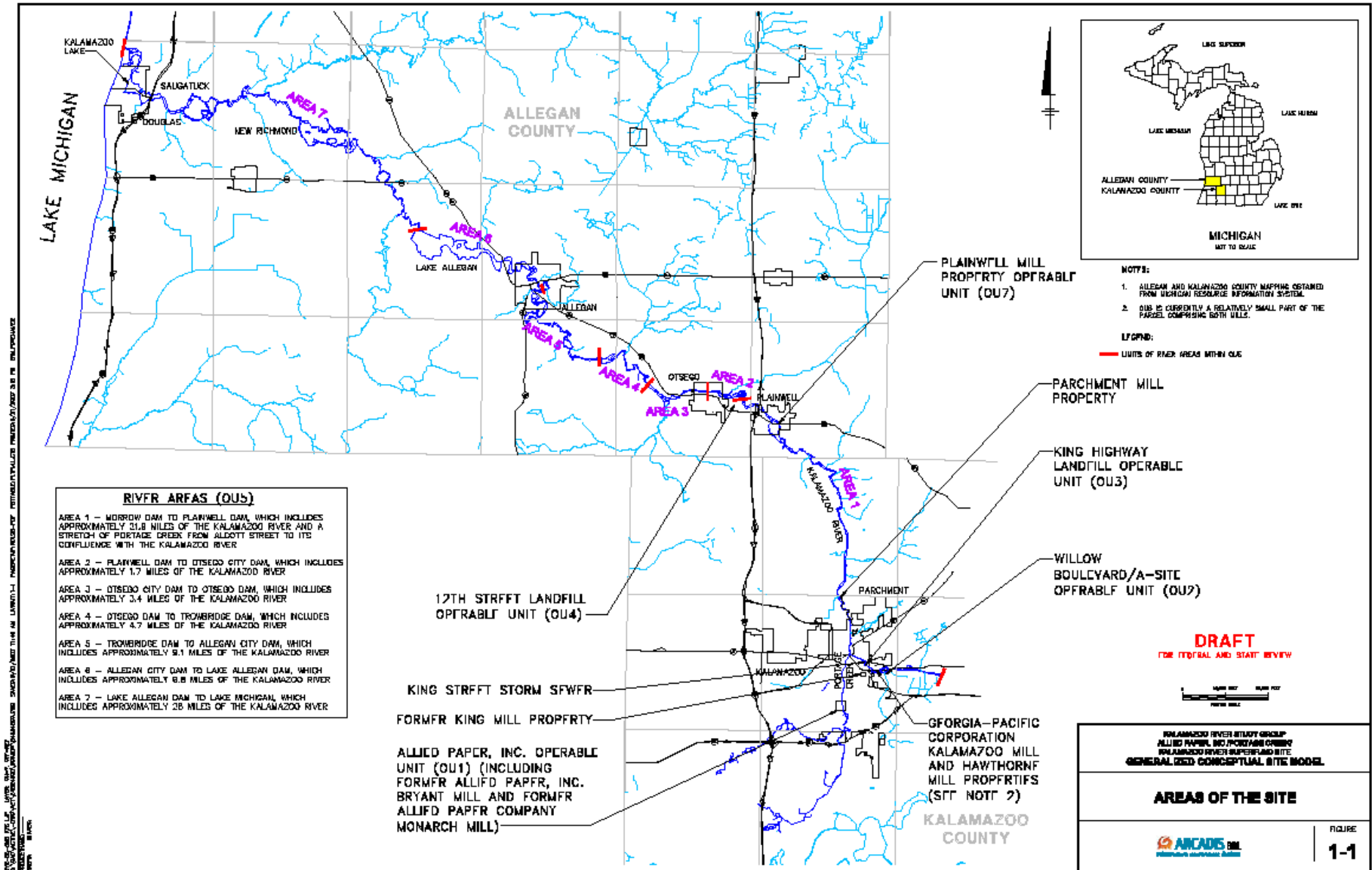


Update on Site Progress



RIVER AREAS (OUs)

- AREA 1 - MORROW DAM TO PLAINWELL DAM, WHICH INCLUDES APPROXIMATELY 31.8 MILES OF THE KALAMAZOO RIVER AND A STRETCH OF PORTAGE CREEK FROM ALDOTT STREET TO ITS CONFLUENCE WITH THE KALAMAZOO RIVER
- AREA 2 - PLAINWELL DAM TO OTSEGO CITY DAM, WHICH INCLUDES APPROXIMATELY 1.7 MILES OF THE KALAMAZOO RIVER
- AREA 3 - OTSEGO CITY DAM TO OTSEGO DAM, WHICH INCLUDES APPROXIMATELY 3.4 MILES OF THE KALAMAZOO RIVER
- AREA 4 - OTSEGO DAM TO TROWBRIDGE DAM, WHICH INCLUDES APPROXIMATELY 4.7 MILES OF THE KALAMAZOO RIVER
- AREA 5 - TROWBRIDGE DAM TO ALLEGAN CITY DAM, WHICH INCLUDES APPROXIMATELY 9.1 MILES OF THE KALAMAZOO RIVER
- AREA 6 - ALLEGAN CITY DAM TO LAKE ALLEGAN DAM, WHICH INCLUDES APPROXIMATELY 9.8 MILES OF THE KALAMAZOO RIVER
- AREA 7 - LAKE ALLEGAN DAM TO LAKE MICHIGAN, WHICH INCLUDES APPROXIMATELY 26 MILES OF THE KALAMAZOO RIVER

17TH STREET LANDFILL
OPERABLE UNIT (OU4)

KING STREET STORM SFWR

FORMER KING MILL PROPERTY

ALLIED PAPER, INC. OPERABLE
UNIT (OU1) (INCLUDING
FORMER ALLIED PAPER, INC.
BRYANT MILL AND FORMER
ALLIED PAPER COMPANY
MONARCH MILL)

PLAINWELL MILL
PROPERTY OPERABLE
UNIT (OU7)

PARCHMENT MILL
PROPERTY

KING HIGHWAY
LANDFILL OPERABLE
UNIT (OU3)

WILLOW
BOULEVARD/A-SITE
OPERABLE UNIT (OU2)

GEORGIA-PACIFIC
CORPORATION
KALAMAZOO MILL
AND HAWTHORN
MILL PROPERTIES
(SEE NOTE 2)

KALAMAZOO
COUNTY

NOTES:

1. ALLEGAN AND KALAMAZOO COUNTY MAPPING OBTAINED FROM MICHIGAN RESOURCE INFORMATION SYSTEM.
2. OUS IS CURRENTLY A RELATIVELY SMALL PART OF THE PARCEL COMPRISED BOTH WELLS.

LEGEND:

— UNITS OF RIVER AREAS WITHIN OUS

DRAFT
FOR FEDERAL AND STATE REVIEW



KALAMAZOO RIVER STUDY GROUP
ALLIED PAPER, INC./PORTAGE CREEK/
KALAMAZOO RIVER SUPERFUND SITE
GENERALIZED CONCEPTUAL SITE MODEL

AREAS OF THE SITE



FIGURE

1-1

Update on Site Progress

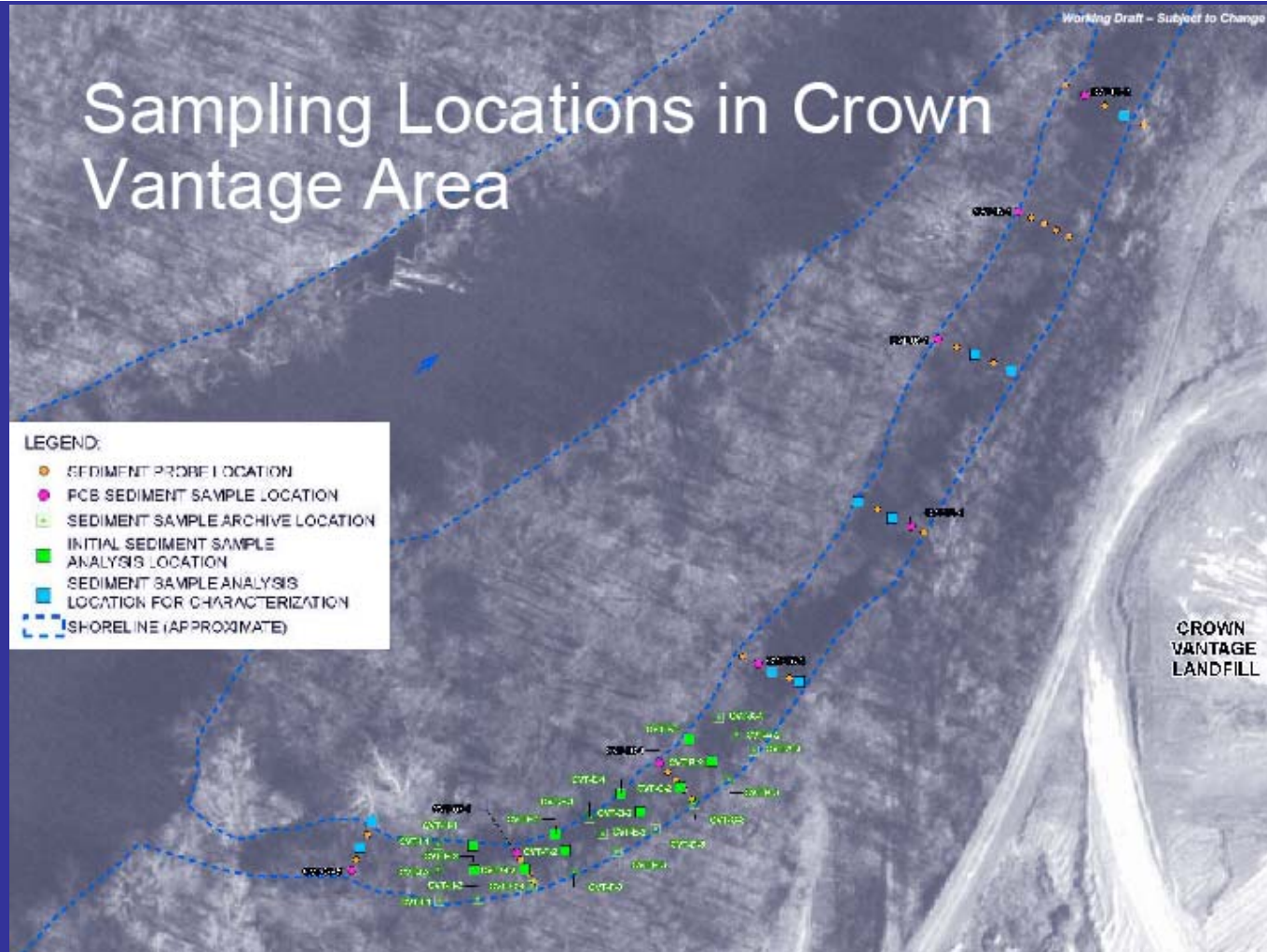
OU 5: River

- Finalizing Area 1 Supplemental Remedial Investigation/Feasibility Study (RI/FS) sampling
- Remedial Investigation report to be submitted by Georgia-Pacific to EPA in Fall 2010 (1 year ahead of schedule)
- Crown Vantage Landfill Area Sampling
- Off-Channel Area Sampling
- Hot Spot Assessment between Georgia-Pacific Mill and Crown Vantage Landfill

Crown Vantage Landfill Area

- Collected 30 soil and sediment cores/samples in Crown Vantage Landfill area and one focused step-out sampling location downstream of D Avenue
- 135 PCB samples submitted for analysis
- Collecting 34 additional cores from river channel in Crown Vantage area to further delineate the extent of contamination

Crown Vantage Landfill Area



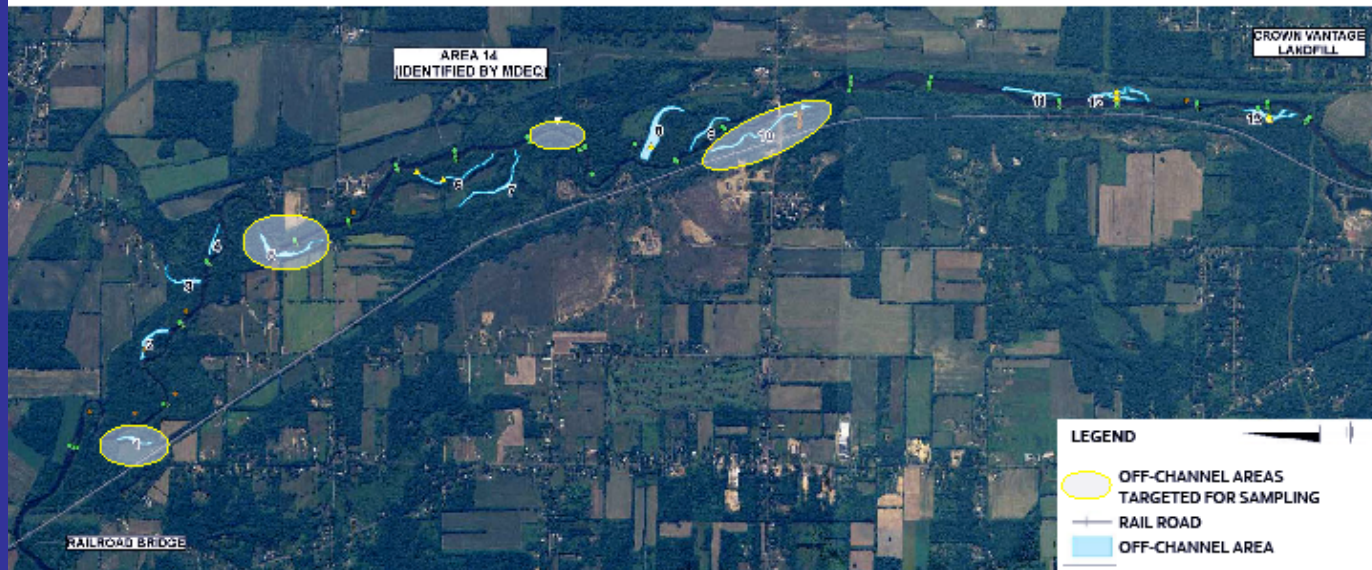
Off-Channel Area Sampling

- Collect 29 sediment samples from 4 “off-channel areas” between City of Kalamazoo and Plainwell No. 2 Dam area

Off-Channel Area Sampling

Working Draft – Subject to Change

Off-Channel Sampling Locations



Hot Spot Assessment—Georgia-Pacific Mill to Crown Vantage Landfill

- Collected 53 sediment cores from 6 potential PCB “hot spots” in the urban Kalamazoo area
- 34 cores to be selected for PCB analysis

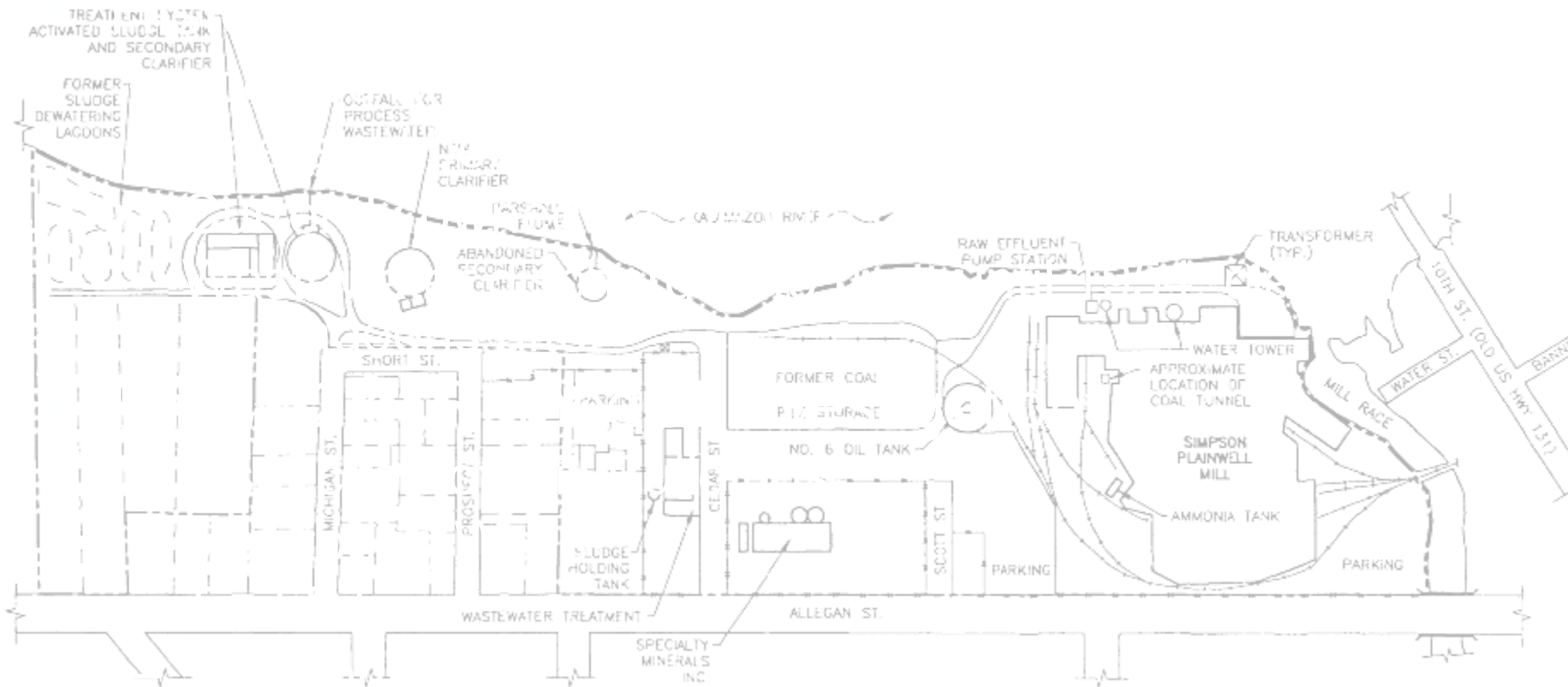
Hot Spot Assessment—Georgia-Pacific Mill to Crown Vantage Landfill

“Hot Spot” Assessment Locations



Update on Site Progress

Plainwell Mill



Update on Site Progress

Operable Unit (OU) 1: Allied Landfill

- Groundwater Investigation
 - Allied Landfill is not impacting City Well Field
- Feasibility Study (FS) submitted October 29, 2009
- Update meeting this Thursday, December 3 in Kalamazoo
 - EPA presentation of remedy selection criteria
 - Millennium presentation of FS
- EPA to propose remedy by fall 2010

Update on Site Progress

OU 2: Willow Boulevard/A-Site Landfills

- Georgia Pacific has started Remedial Design process
 - Remedy complete by end 2011

Update on Site Progress

OU 3: King Highway Landfill

- Georgia-Pacific continues to implement the remedy at this OU

OU 4: 12th Street Landfill

- Weyerhaeuser is the Responsible Party at this OU
- EPA reviewing landfill cap design
- Anticipate cap construction to begin spring 2010