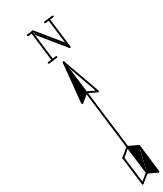
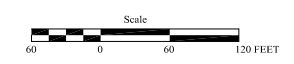
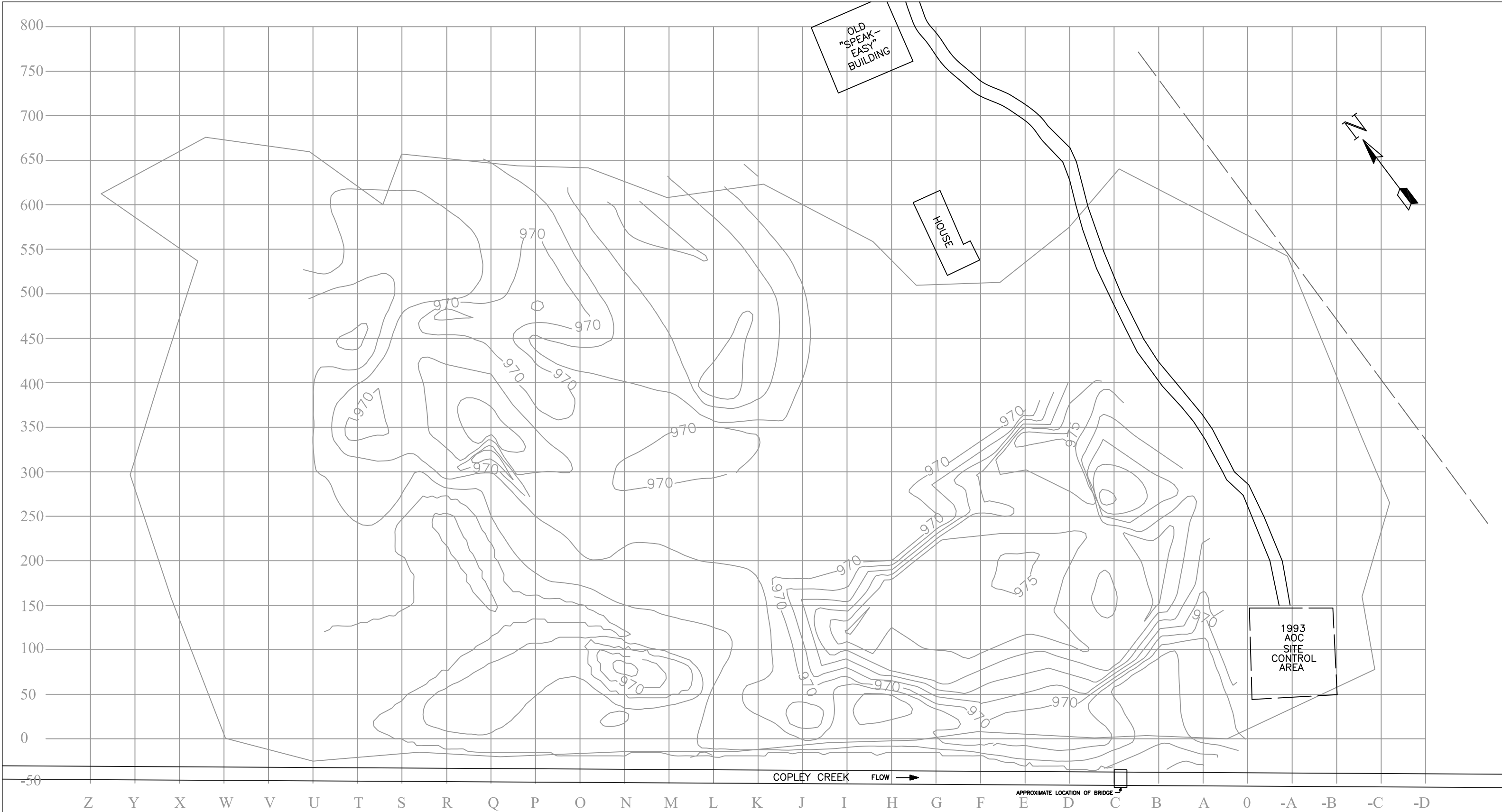


LEGEND
 - - - - - OPERABLE UNIT 2 BOUNDARY (APPROXIMATE)
 _____ OPERABLE UNIT 1 BOUNDARY (APPROXIMATE)



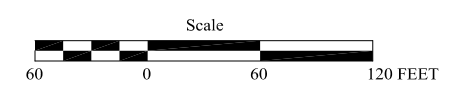
 **KU RESOURCES, INC.**
 22 SOUTH LINDEN STREET
 DUQUESNE, PA 15110
 (412) 469-9331
 FAX: (412) 469-9336
 www.kuresources.com
 SCALE: AS-NOTED | JOB: NCC99035BWL | DATE: 10/9/2007

FIGURE 1-2
OPERABLE UNIT
LOCATION MAP
Bessie Williams Landfill



LEGEND

- 970 — APPROXIMATE EXISTING CONTOURS
CONTOUR INTERVAL 1 FOOT
CONTOURS IN FEET - MSL
- - - - - APPROXIMATE LOCATION OF PROPERTY LINE
- — — — — APPROXIMATE LIMIT OF FORMER LANDFILL



KU RESOURCES, INC.
22 SOUTH LINDEN STREET
DUQUESNE, PA 15110
(412) 469-9331
FAX: (412) 469-9336

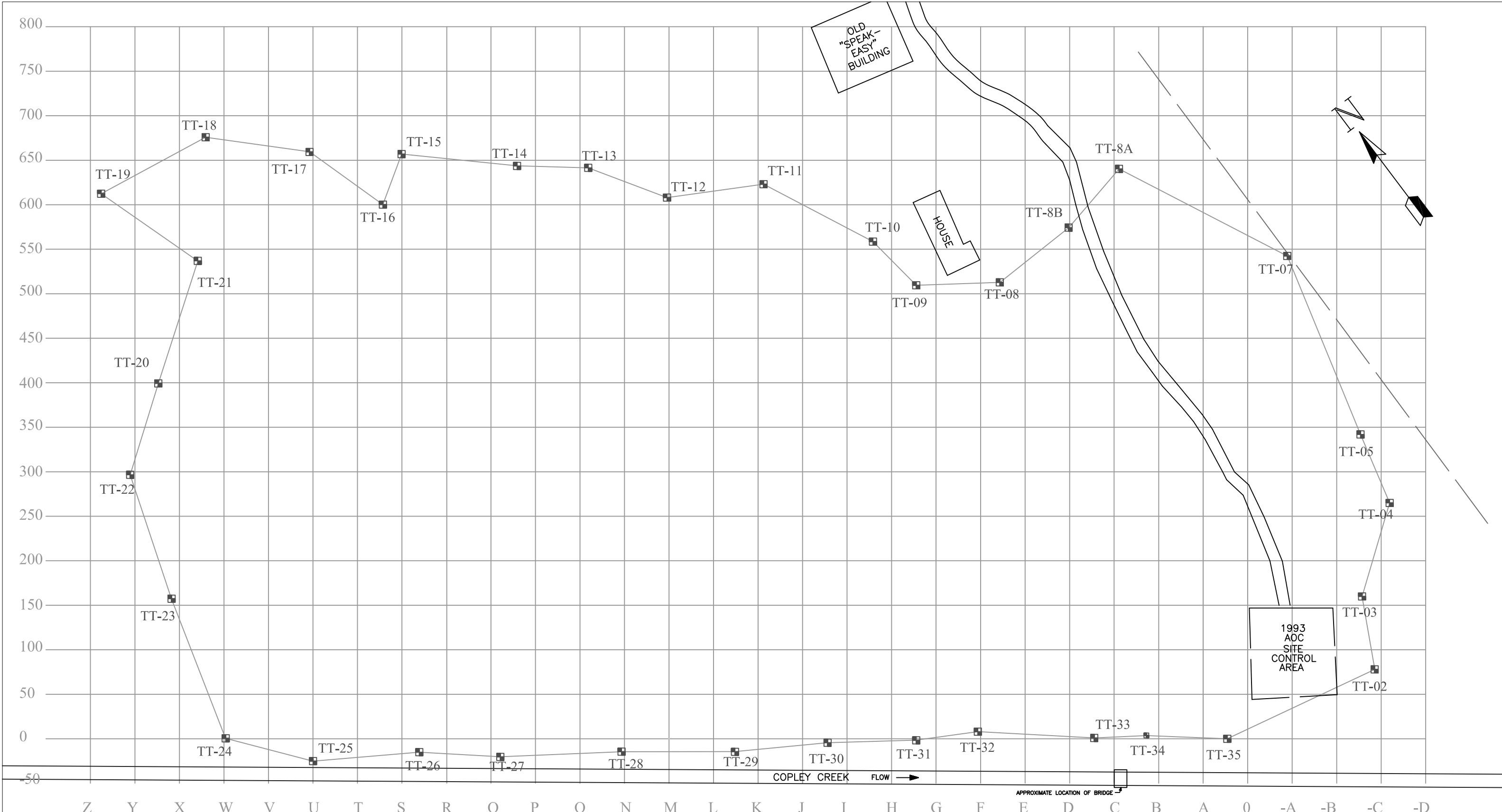
www.kuresources.com

FIGURE 1-3
FORMER LANDFILL AREA
TOPOGRAPHIC MAP
Bessie Williams Landfill

SCALE: AS-NOTED

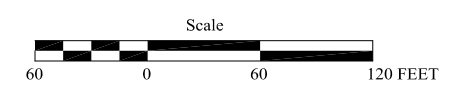
JOB: NCC99035BWL

DATE: 10/9/2007



LEGEND

- APPROXIMATE TEST TRENCH LOCATION
- APPROXIMATE LOCATION OF PROPERTY LINE
- APPROXIMATE LIMIT OF FORMER LANDFILL

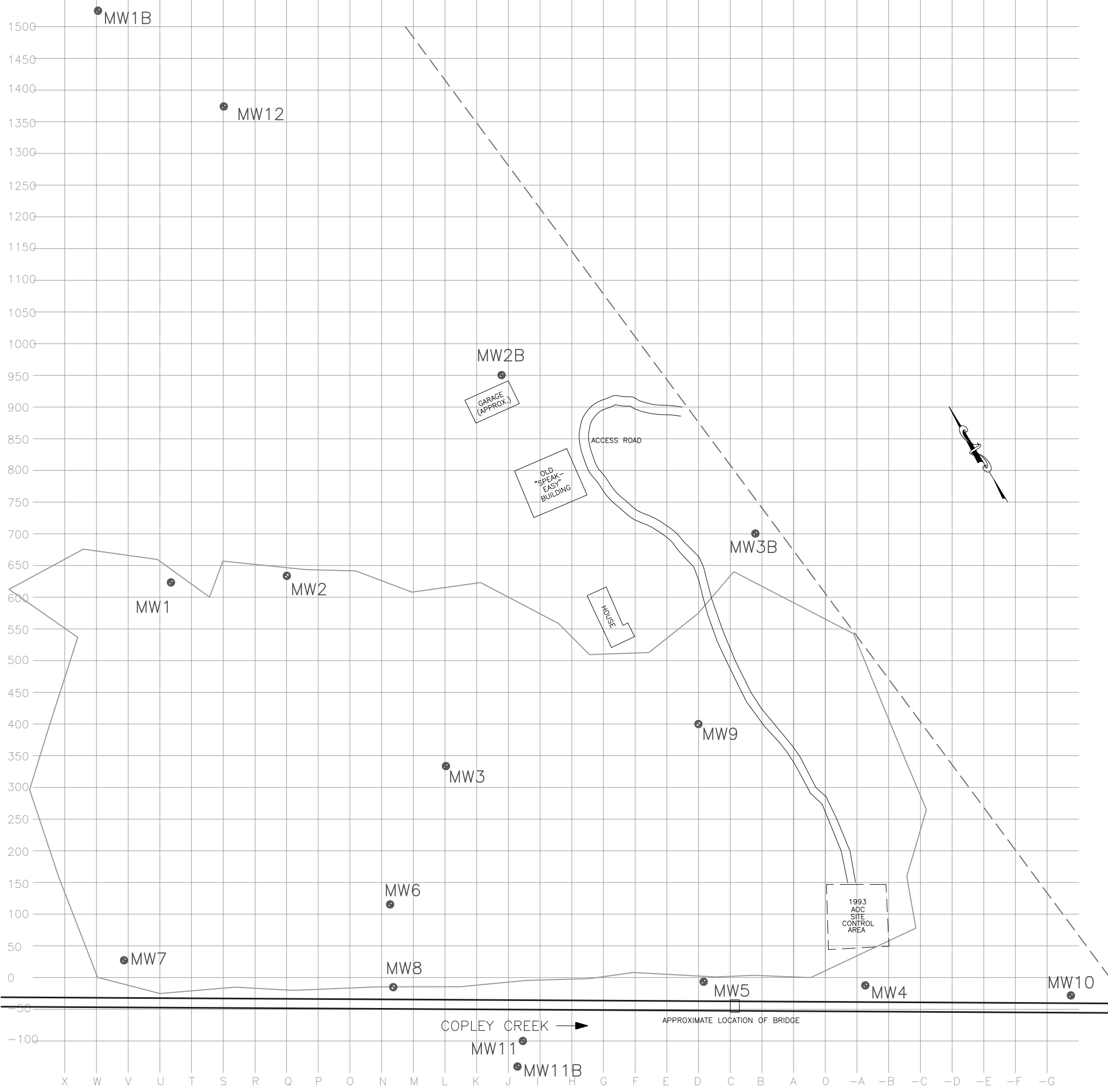


KU RESOURCES, INC.
 22 SOUTH LINDEN STREET
 DUQUESNE, PA 15110
 (412) 469-9331
 FAX: (412) 469-9336

www.kuresources.com

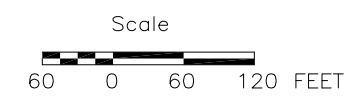
*FIGURE 1-4
 TEST TRENCH
 LOCATION MAP
 Bessie Williams Landfill*

SCALE: AS-NOTED JOB: NCC99035BWL DATE: 10/9/2007



LEGEND

- MONITORING WELL LOCATION
- APPROXIMATE LOCATION OF PROPERTY LINE
- APPROXIMATE LIMIT OF FORMER LANDFILL



KU RESOURCES, INC.
 22 SOUTH LINDEN STREET
 DUQUESNE, PA 15110
 (412) 469-9331
 FAX: (412) 469-9336

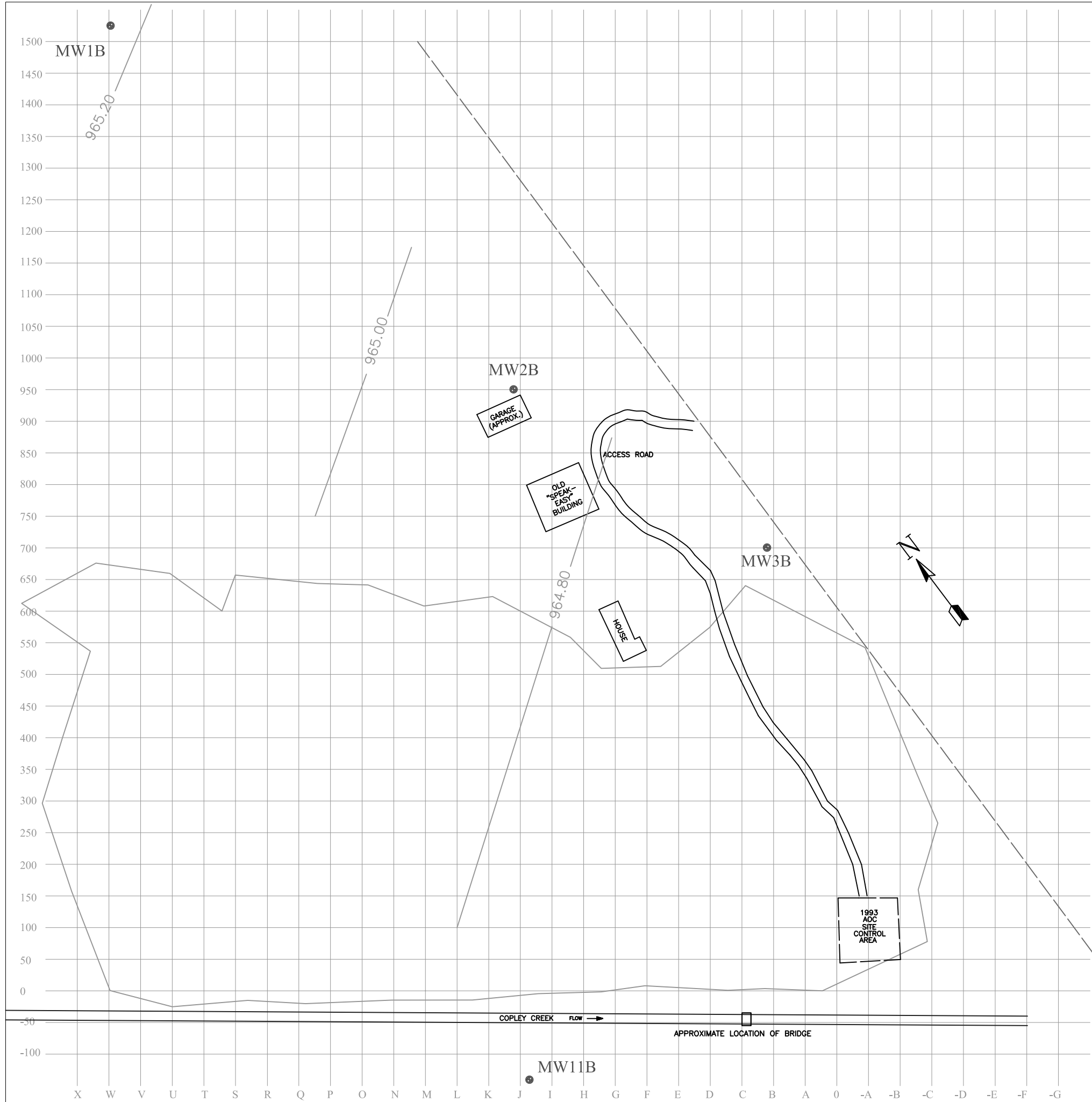
www.kuresources.com

SCALE: AS-NOTED	JOB: NCC99035BWL	DATE: 10/9/2007
-----------------	------------------	-----------------

FIGURE 1-5

MONITORING WELL LOCATION MAP

Bessie Williams Landfill



LEGEND

- WATER LEVEL (FEET - MSL)
- APPROXIMATE LOCATION OF PROPERTY LINE
- APPROXIMATE LIMIT OF FORMER LANDFILL
- APPROXIMATE MONITORING WELL LOCATION

Scale

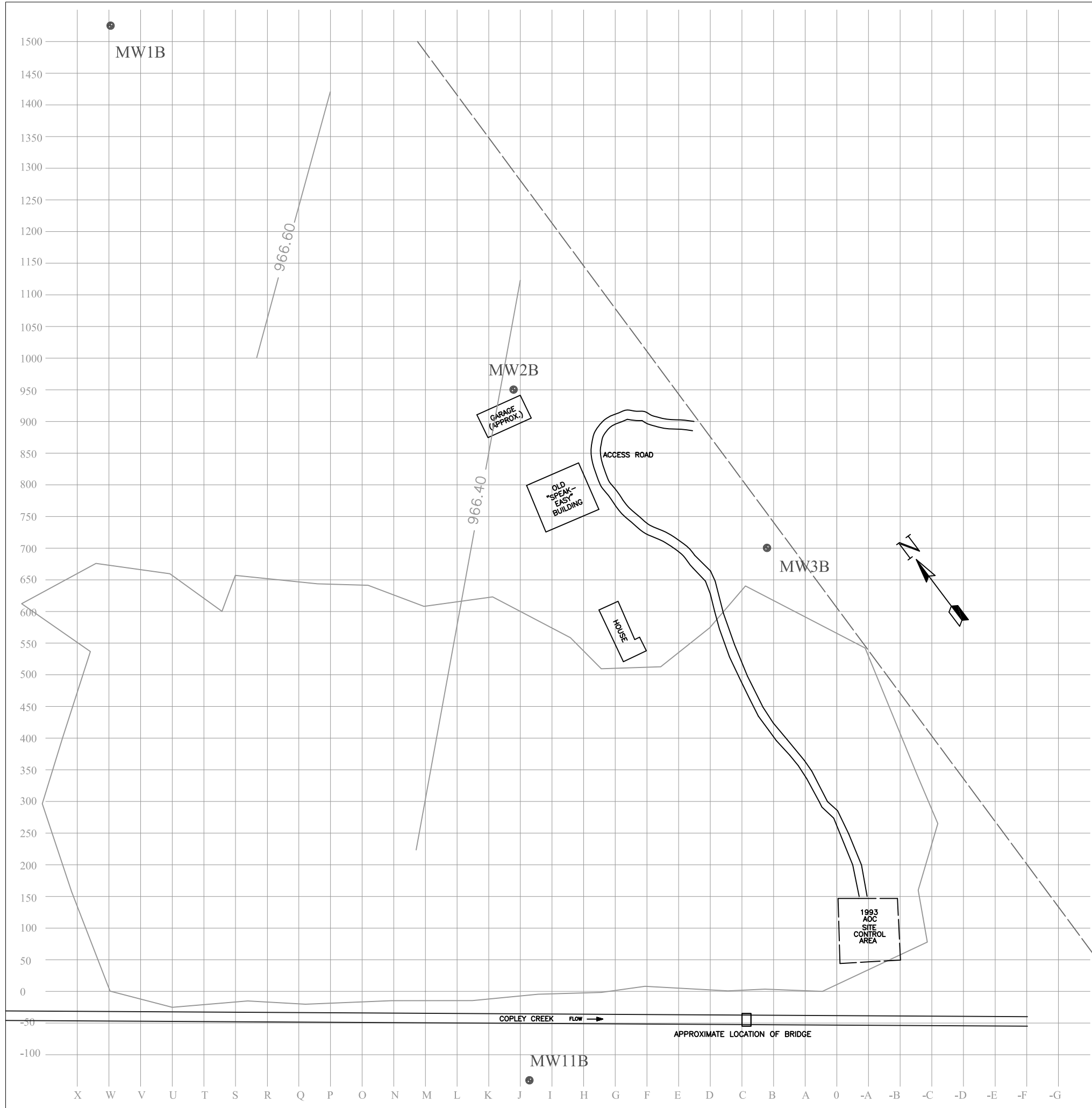
 0 60 120 FEET

KU RESOURCES, INC.
 22 SOUTH LINDEN STREET
 DUQUESNE, PA 15110
 (412) 469-9331
 FAX: (412) 469-9336

www.kuresources.com

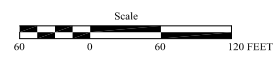
SCALE: AS-NOTED	JOB: NCC99035BWL	DATE: 10/9/07
-----------------	------------------	---------------

FIGURE 1-6
WATER LEVEL CONTOUR MAP
SAND AND GRAVEL UNIT
NOVEMBER 1995 SAMPLING ROUND
Bessie Williams Landfill



LEGEND

- 970 — WATER LEVEL (FEET - MSL)
- - - - - APPROXIMATE LOCATION OF PROPERTY LINE
- APPROXIMATE LIMIT OF FORMER LANDFILL
- ⊙ APPROXIMATE MONITORING WELL LOCATION

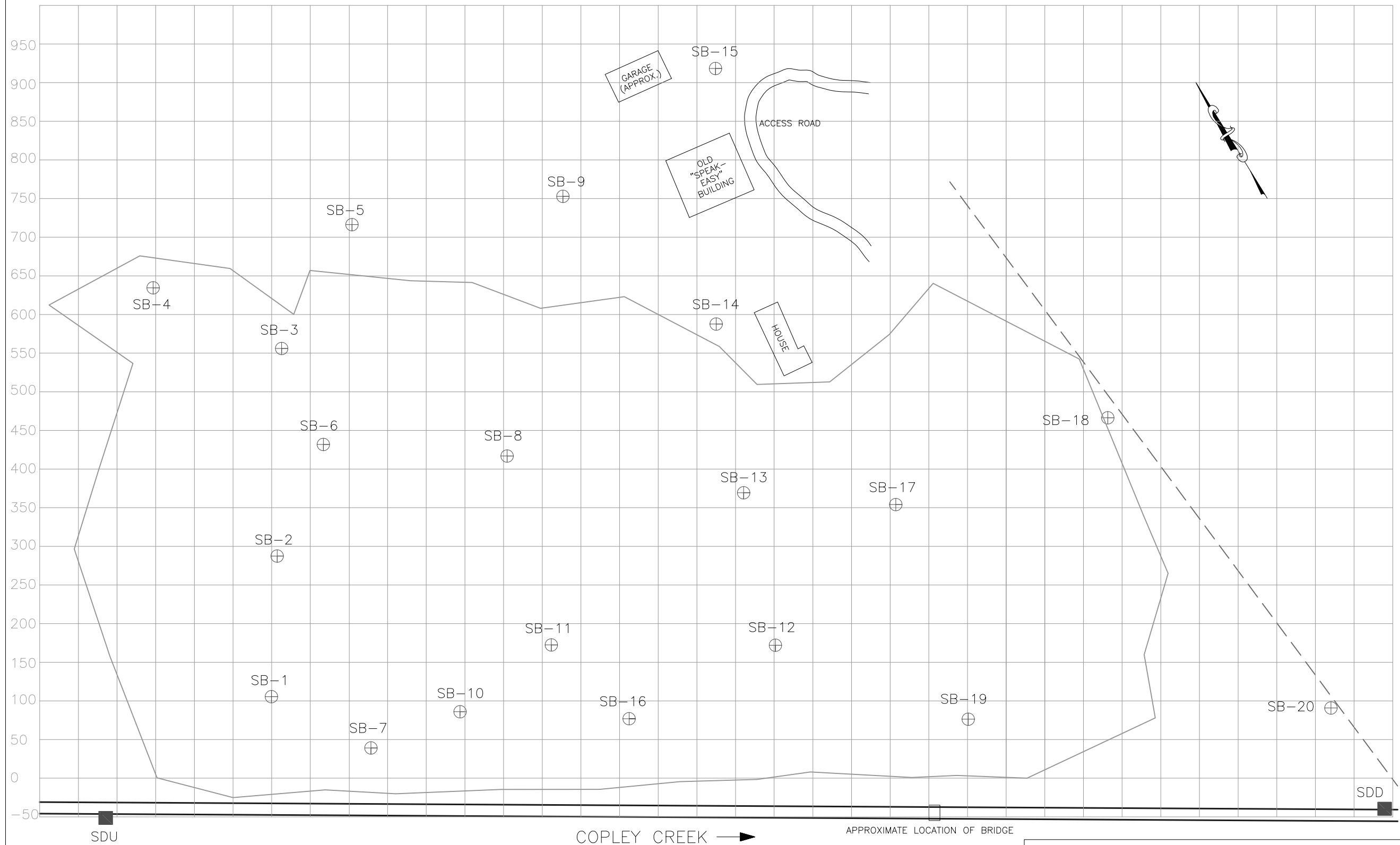


KU RESOURCES, INC.
 22 SOUTH LINDEN STREET
 DUQUESNE, PA 15110
 (412) 469-9331
 FAX: (412) 469-9336
 www.kuresources.com

SCALE: AS-NOTED JOB: NCC99035BWL DATE: 10/9/2007

FIGURE 1-7
 WATER LEVEL CONTOUR MAP
 SAND AND GRAVEL UNIT
 MARCH 1996 SAMPLING ROUND
 Bessie Williams Landfill

Z Y X W V U T S R Q P O N M L K J I H G F E D C B A 0 -A -B -C -D -E -F -G -H -I



LEGEND

- SEDIMENT SAMPLE LOCATION
- ⊕ SURFACE SOIL SAMPLE LOCATION
- - - - - APPROXIMATE LOCATION OF PROPERTY LINE
- APPROXIMATE EXTENT OF FORMER LANDFILL



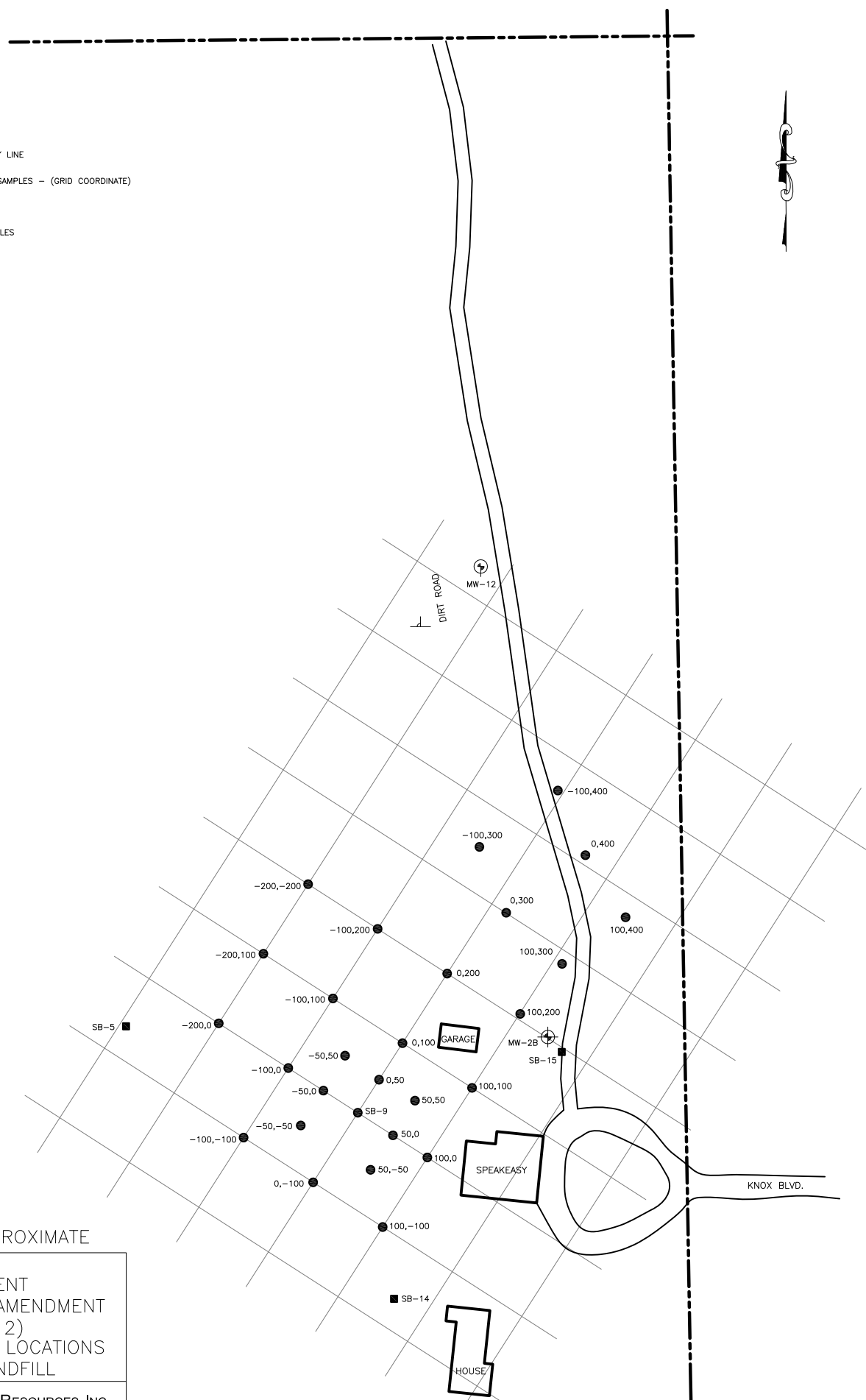
KU RESOURCES, INC.
22 SOUTH LINDEN STREET
DUQUESNE, PA 15110
(412) 469-9331
FAX: (412) 469-9336

www.kuresources.com

SCALE: AS-NOTED | JOB: NCC99035BWL | DATE: 10/9/2007

FIGURE 1-8
*Surface Soil And Sediment Sampling Location Map
Bessie Williams Landfill*

- APPROXIMATE LOCATION OF PROPERTY LINE
- SECOND AMENDMENT SURFACE SOIL SAMPLES - (GRID COORDINATE)
- ⊕ MONITORING WELLS
- ORIGINAL EE/CA SURFACE SOIL SAMPLES



NOTE: LOCATIONS ARE APPROXIMATE

FIGURE 1-9
 SECOND AMENDMENT
 SUPPLEMENTAL SECOND AMENDMENT
 (OPERABLE UNIT 2)
 SURFACE SOIL SAMPLING LOCATIONS
 BESSIE WILLIAMS LANDFILL

APPROVED	DK	10/9/2007
CHECKED	DK	10/9/2007
DRAWN	RLB	10/9/2007
PROJECT NO.	NCC99035BWL	
DRAWING NUMBER	NCCA0001	

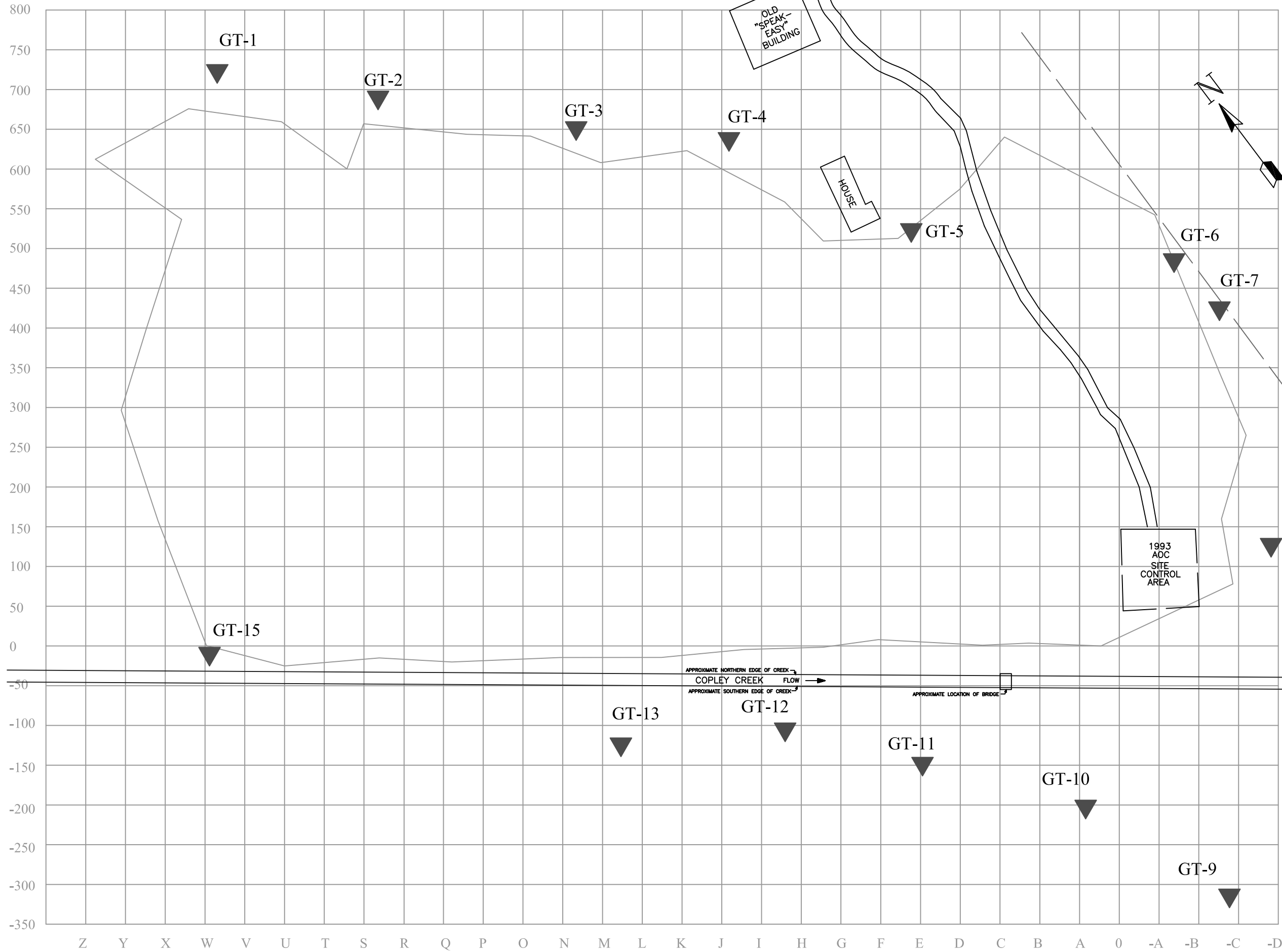


KU RESOURCES, INC.
 22 SOUTH LINDEN STREET
 DUQUESNE, PA 15110
 (412) 469-9331
 FAX: (412) 469-9336

www.kuresources.com

APPROX. SCALE
(FEET)





LEGEND

- — — — — APPROXIMATE LOCATION OF PROPERTY LINE
- — — — — APPROXIMATE LIMIT OF FORMER LANDFILL
- ▼ APPROXIMATE LOCATION OF GEOTECHNICAL BORING

Scale
60 0 60 120 FEET



KU RESOURCES, INC.
 22 SOUTH LINDEN STREET
 DUQUESNE, PA 15110
 (412) 469-9331
 FAX: (412) 469-9336

www.kuresources.com

SCALE: AS-NOTED | JOB: NCC99035BWL | DATE: 10/9/2007

FIGURE 1-10
GEOTECHNICAL BORING
LOCATION MAP
Bessie Williams Landfill