

Tittabawassee River, Saginaw River & Bay Site

Project Timeline and CAG Involvement

Mary P. Logan – U.S. EPA
CAG Meeting August 16, 2010



Outline

- Timeline and CAG involvement on technical projects
- CAG involvement in other areas

CAG Involvement Technical Projects

■ Informal feedback

- Discussion & comments at CAG meetings
- Early in the process to identify key community values regarding potential actions

■ Formal feedback

- Written/public record position on proposed actions
- Typically during public comment period

Typical Process – Cleanup Decisions

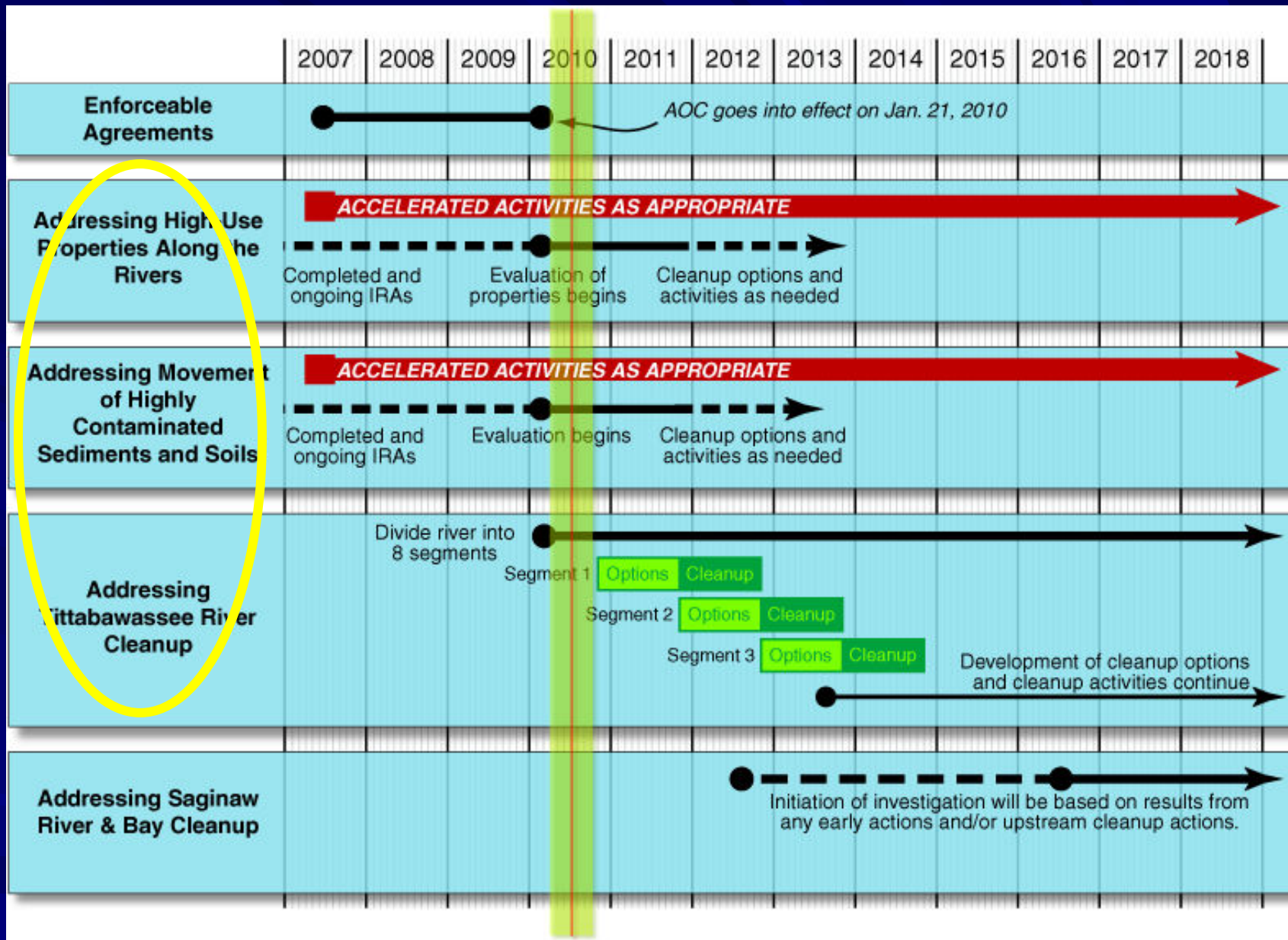
- Dow prepares draft document
 - Array of cleanup options
 - Compares all options against set criteria
- Agencies review draft document and send comments to Dow
 - Presentations at CAG meetings on key aspects
 - CAG informal feedback would be helpful during this period

Typical Process – Cleanup Decisions (cont.)

- Dow revises document
- Agencies review and finalize
- EPA, working with DNRE, issues a proposed preferred option for public comment
 - CAG input especially important during public comment period

Typical Process – Cleanup Decisions (cont.)

- Agencies consider and respond to all comments
- EPA, working with DNRE, selects the cleanup option
- Dow designs the selected option
 - CAG input may be important on issues of concern to communities (e.g., transportation routes, noise, etc.)



EPA's Projected Timeline – July 2010

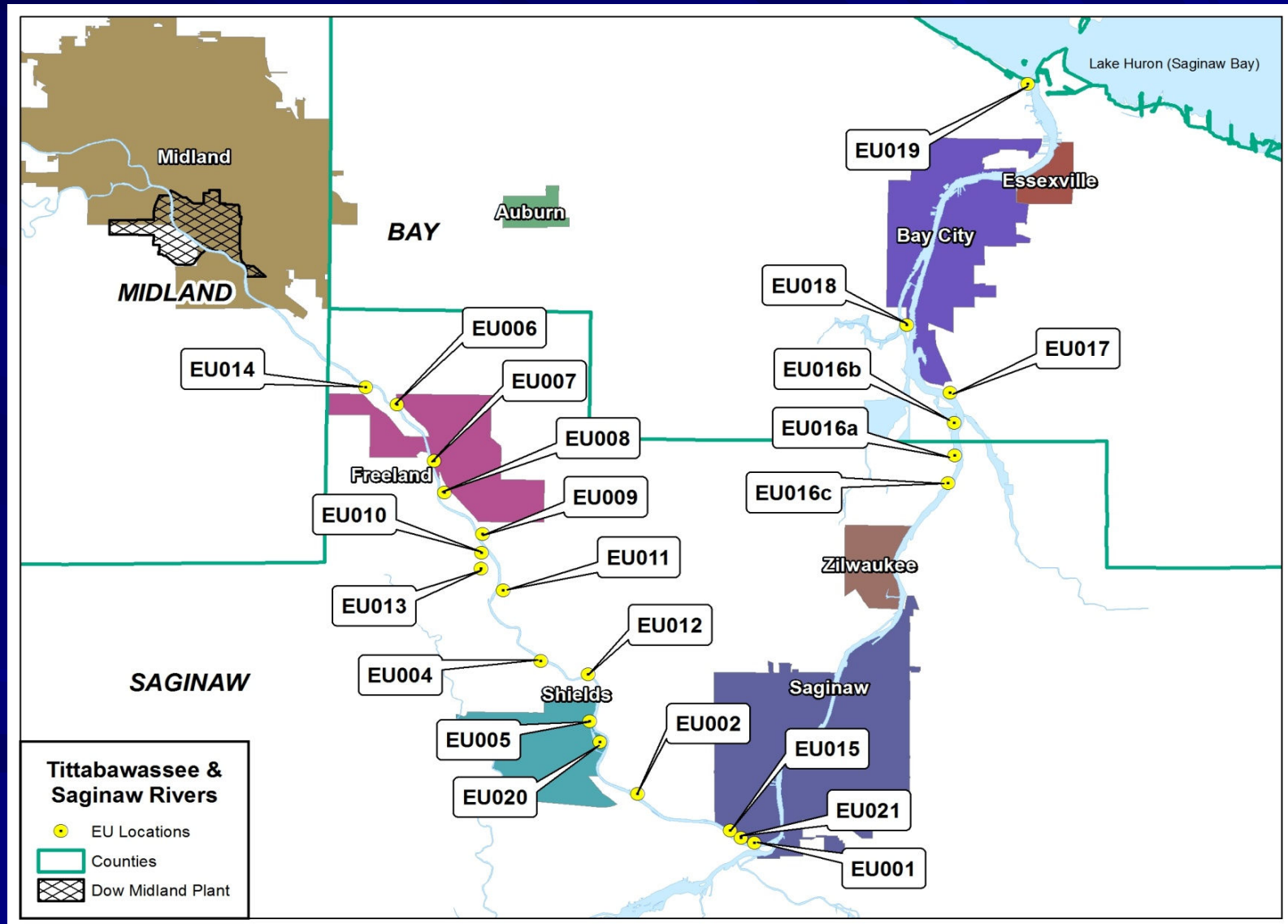
High Use Properties Key Objectives

- Develop options to address potential acute or near-term exposure risks
 - Focus on areas of high human use with high surface contamination
 - Focus on exposure control
 - Additional actions considered as part of segment-specific evaluations
- Important to note → ongoing flood response and other RCRA interim response actions will continue

Exposure Units (EUs)

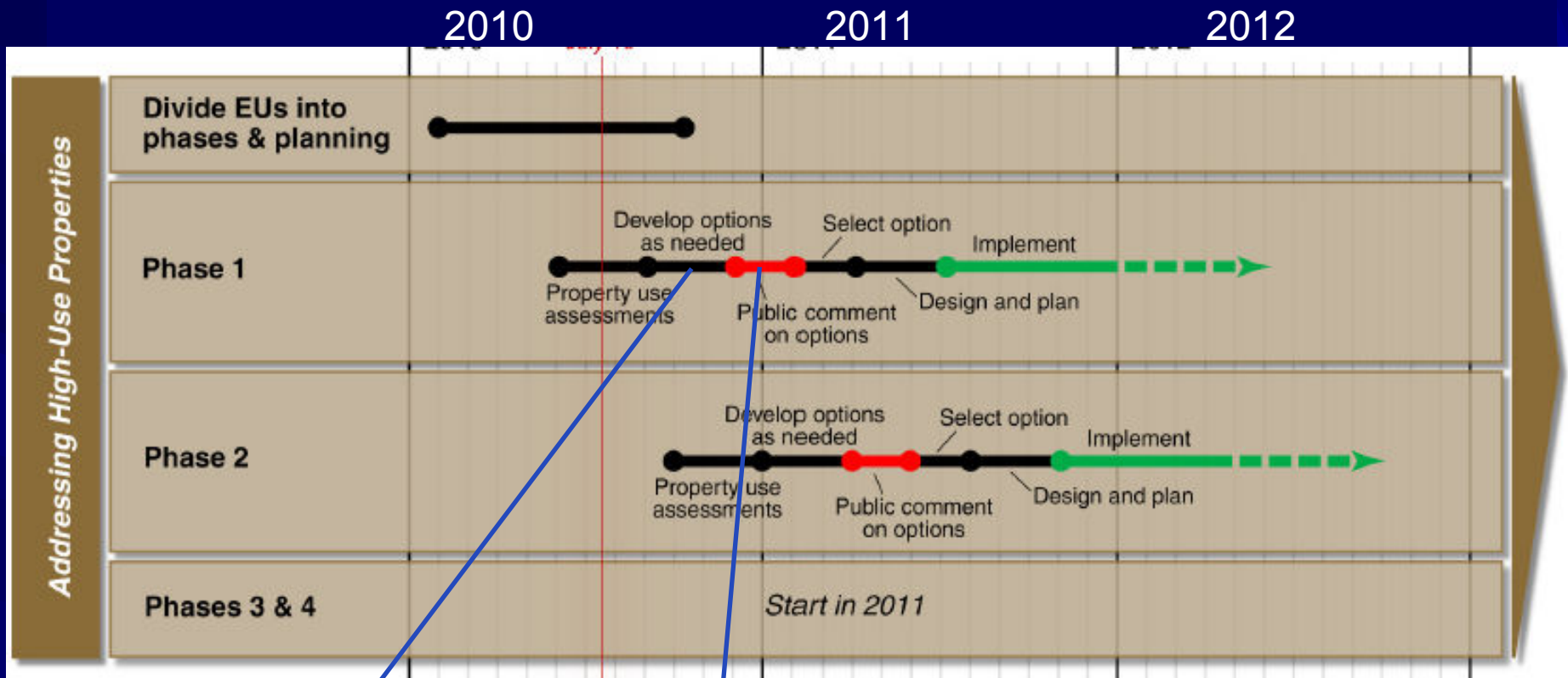
- EPA and MDEQ identified areas called “Exposure Units” or EUs in 2008
- 18 EUs will be assessed
 - 14 EUs along the Tittabawassee River
 - 4 EUs along the Saginaw River
- Approximately 260 property parcels will be assessed
- New areas can be identified, as needed

General Location of Exposure Units



High Use Properties CAG Involvement

- Informal feedback from CAG as options are being developed
 - September 2010 CAG meeting – discuss
 - Draft criteria that trigger an exposure control
 - Potential types of exposure controls
- Formal feedback during public comment period
 - Target date – November/December 2010



CAG informal input

CAG formal input

Contaminant Movement

Key Objectives

- Develop options to address potential acute or near-term contaminant transport risks
 - Focus on highly eroding areas that are highly contaminated
 - Focus on stabilizing contaminant movement
 - Additional actions considered as part of segment-specific evaluations
- New areas can be identified, as needed

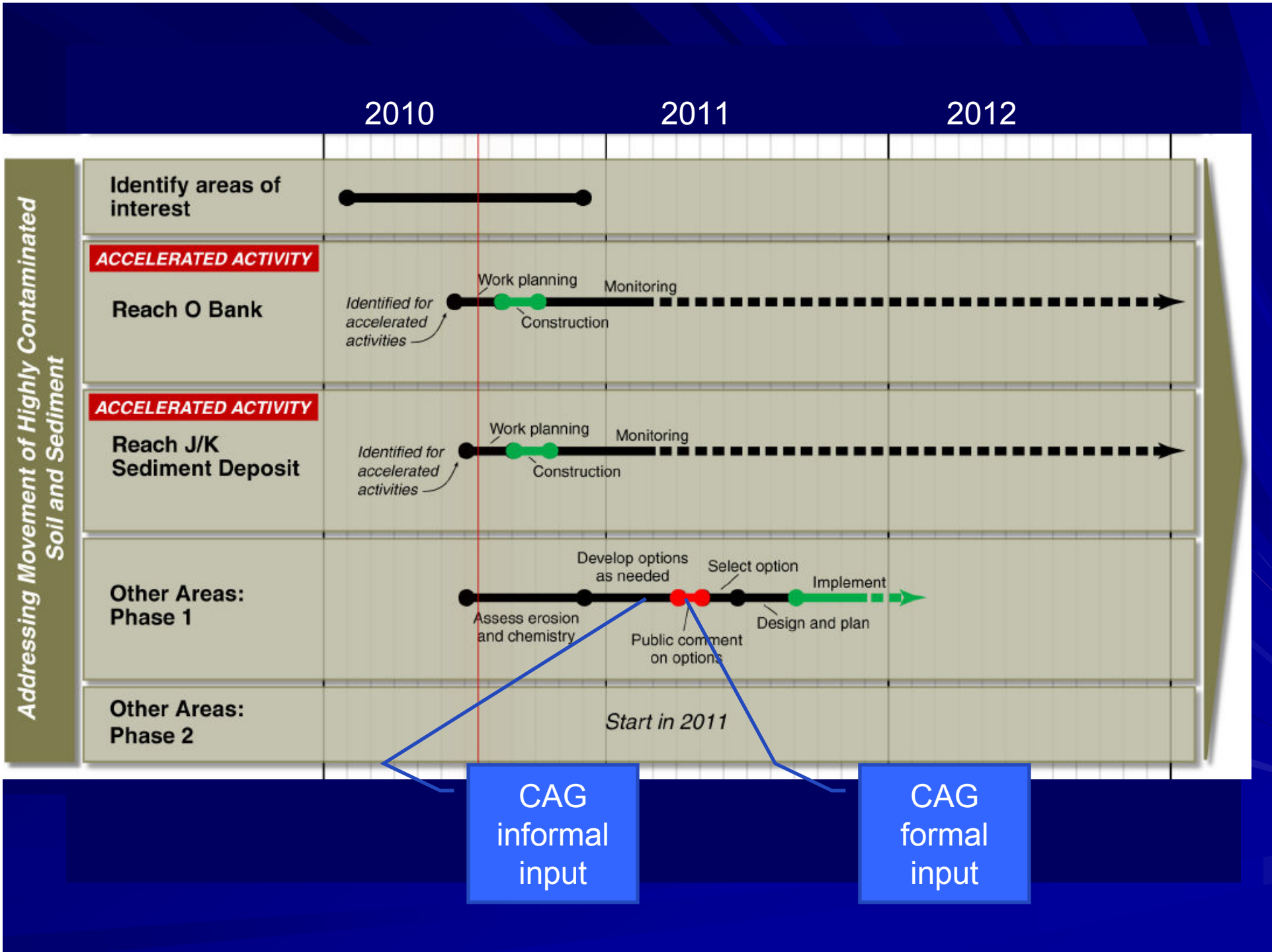
Areas Currently Being Assessed

- Bank areas
 - 6 bank stretches *
- In-channel areas
 - 12 historic deposits *
 - 2 center channel islands
- Sediment trap(s)
- Other areas, as needed
- More data and analysis needed for most areas

* One included in a 2010 accelerated action

Contaminant Movement CAG Involvement

- Informal feedback from CAG as options are being developed
 - Early 2011 CAG meeting – discuss
 - Conditions that might trigger a stabilization action
 - Potential types of stabilization actions
- Formal feedback during public comment period
 - Target date – Spring 2011

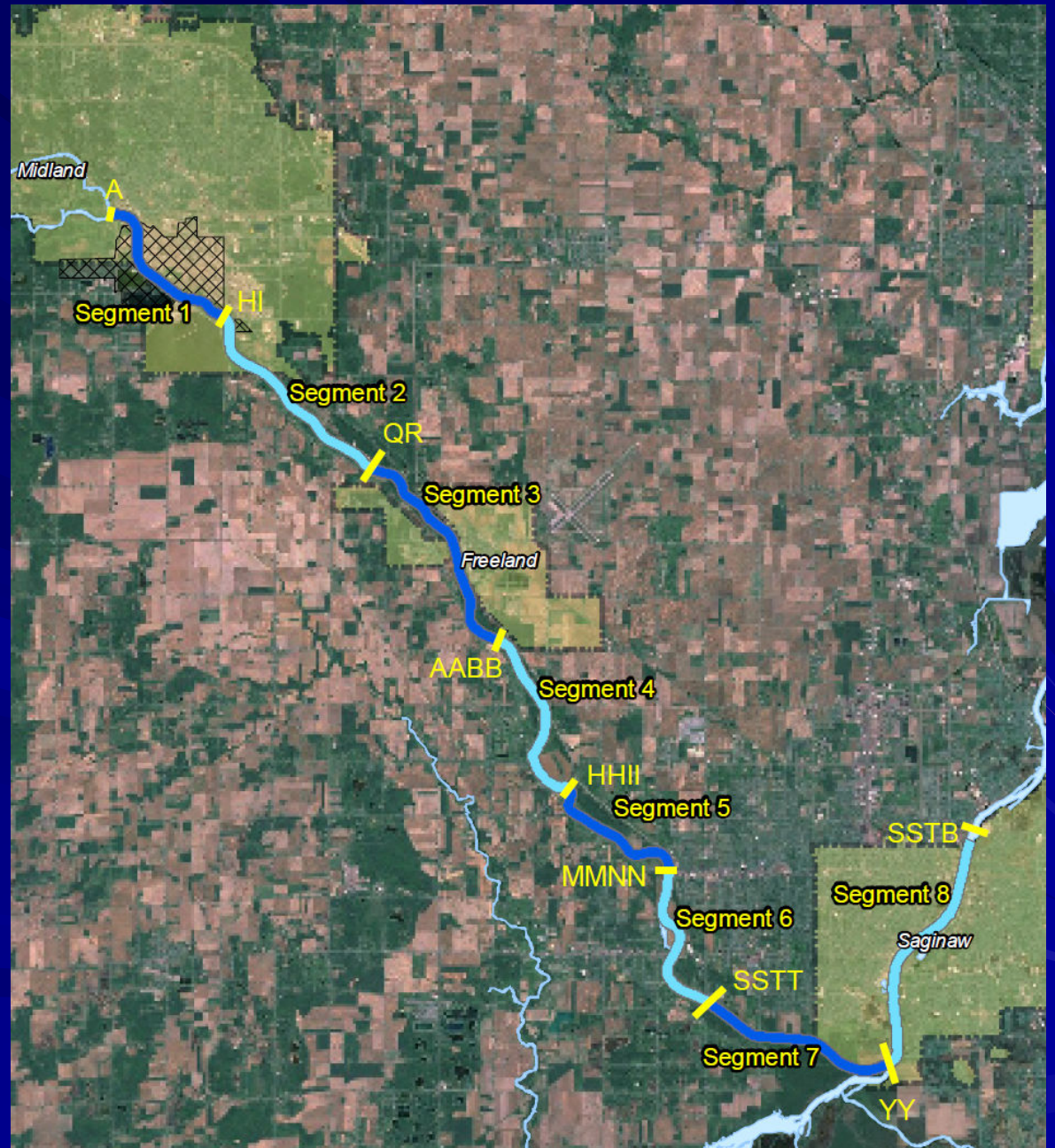


Segment-by-Segment Approach

- Divide OU 1 into manageable segments
- Upstream to downstream approach
- Segment-Specific Response Proposals
 - Build on existing work
 - Fill data gaps as needed
 - Response actions may be performance-based

Dividing OU 1

- Includes ~ 24 miles of the Tittabawassee River and ~ 5 miles of the Saginaw River
- Eight segments – around 3 – 5 miles each
- Timing/schedule are important considerations



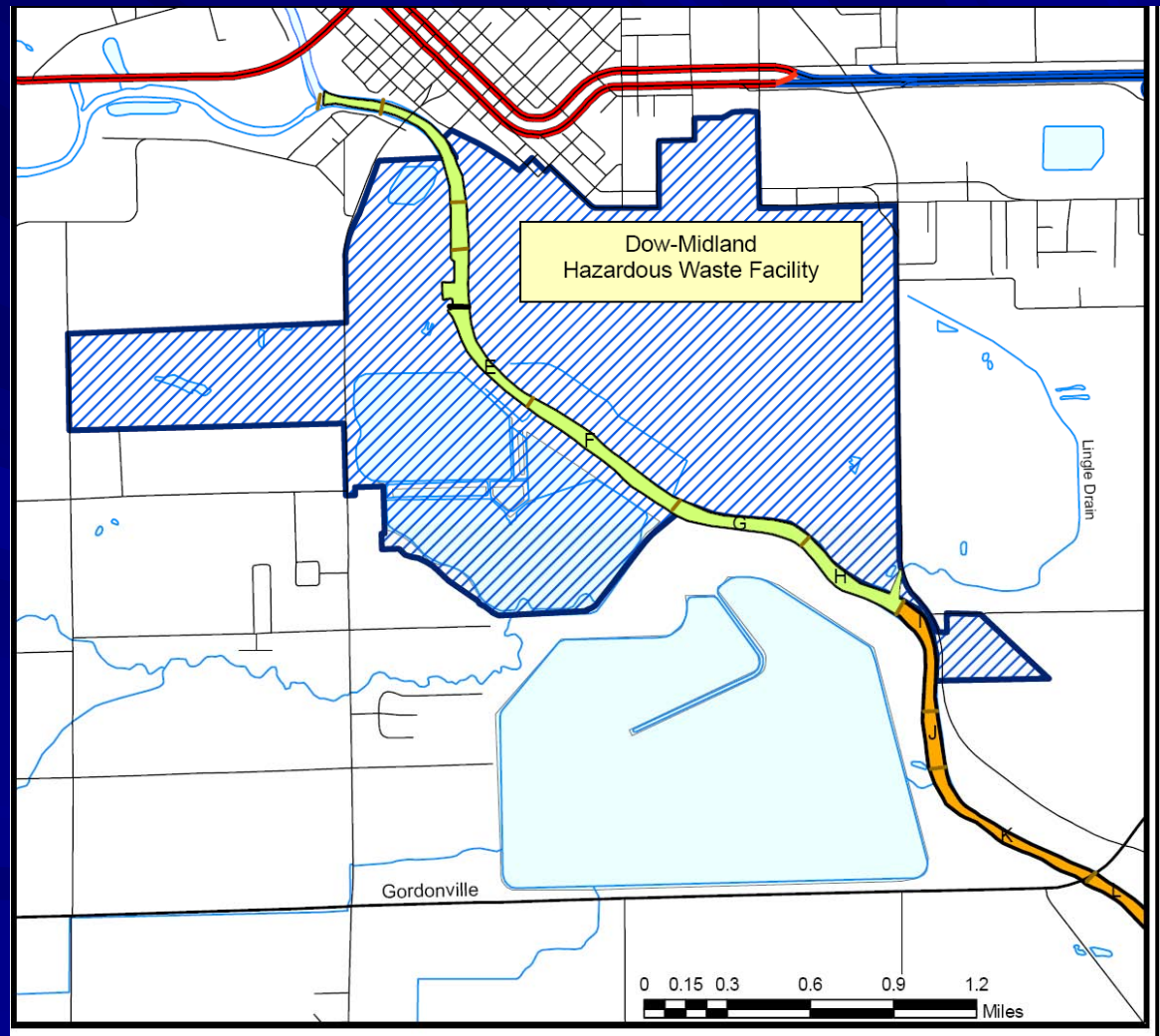
Segment-by-Segment Approach

Key Objectives

- Comprehensive cleanup options for the entire segment
 - Floodplains
 - Banks
 - Sediments
- Overarching goals:
 - Reduce movement of contaminants that may contribute to unacceptable risks
 - Reduce unacceptable human health and ecological risks

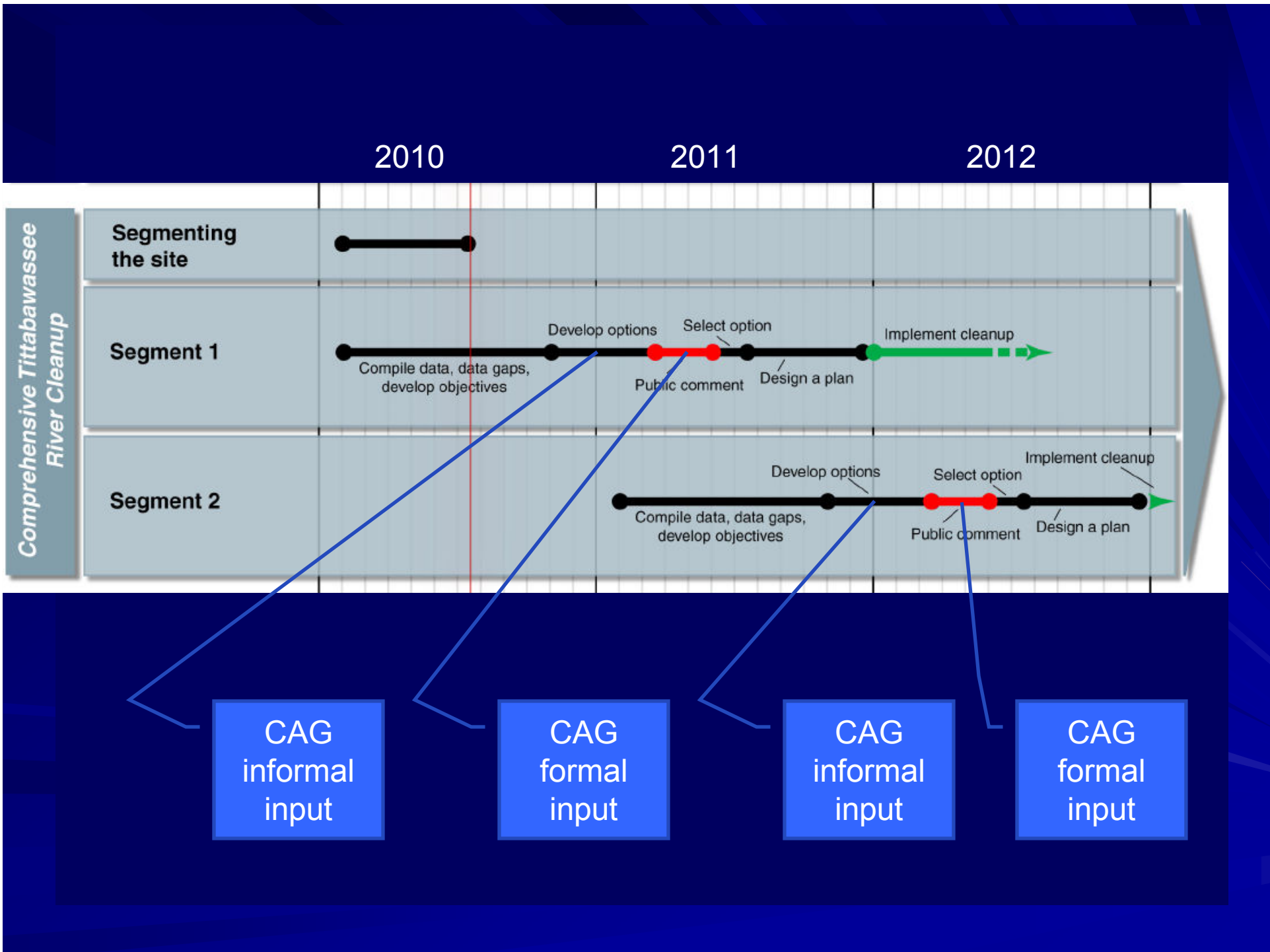
Tittabawasse River – Segment 1

- Segment 1 includes the three miles next to the Midland plant
- Unique conditions in this segment



Segment-by-Segment Approach CAG Involvement

- Background on Segment 1 – September and/or October CAG meetings
- Informal feedback from CAG as options are being developed
 - November 2010 or January 2011 CAG meeting – discuss
 - Basis for action
 - Draft cleanup options
- Formal feedback during public comment period
 - Target date – Spring 2011



CAG Involvement – Other Areas

- The CAG can help advise in other areas
 - Are there other site-related issues that we need to focus on?
- EPA acknowledges that it is our job to conduct community outreach
 - However, the CAG might:
 - Help EPA with more effective community outreach
 - Help clarify key messages about the site

END