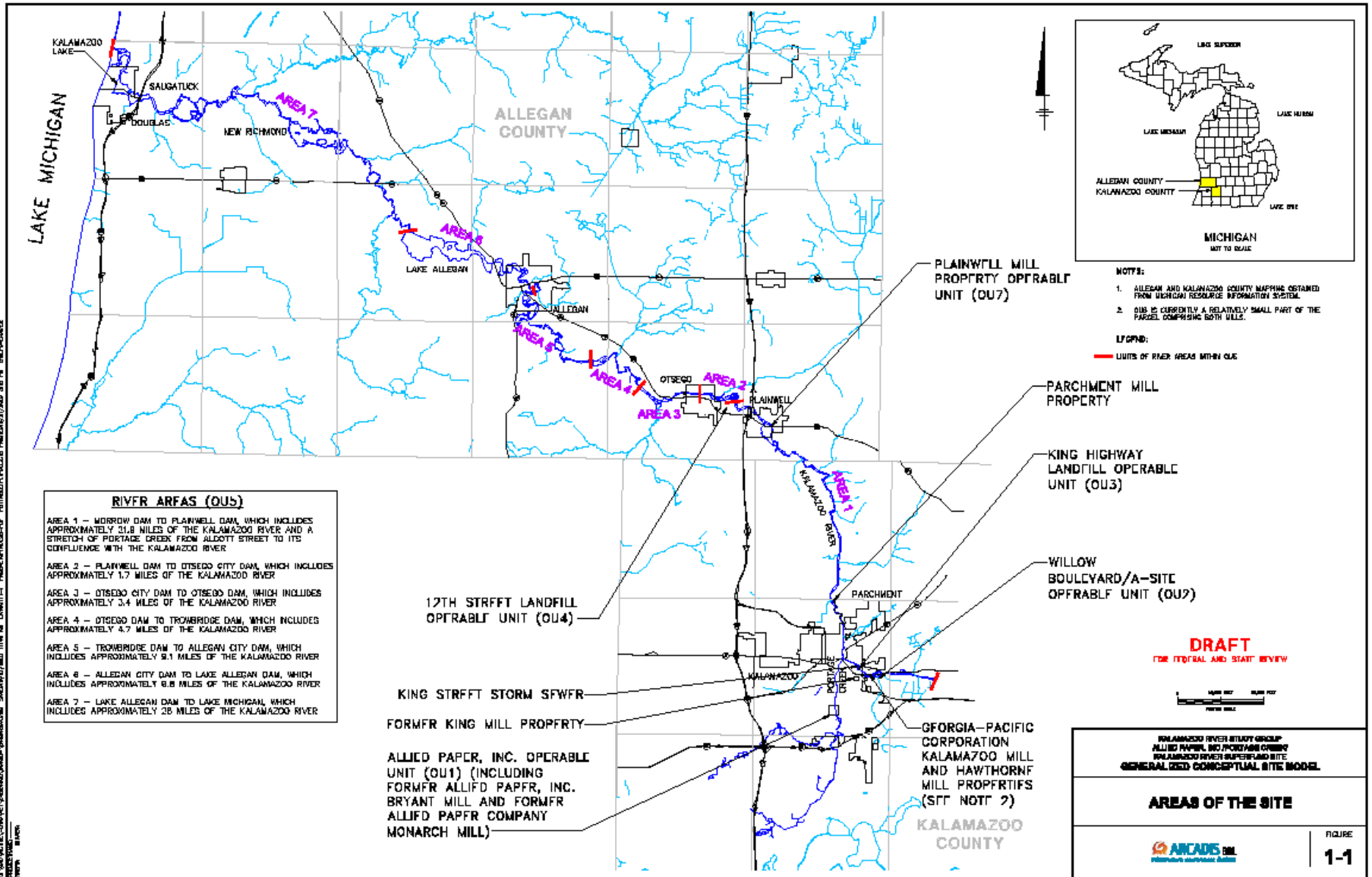
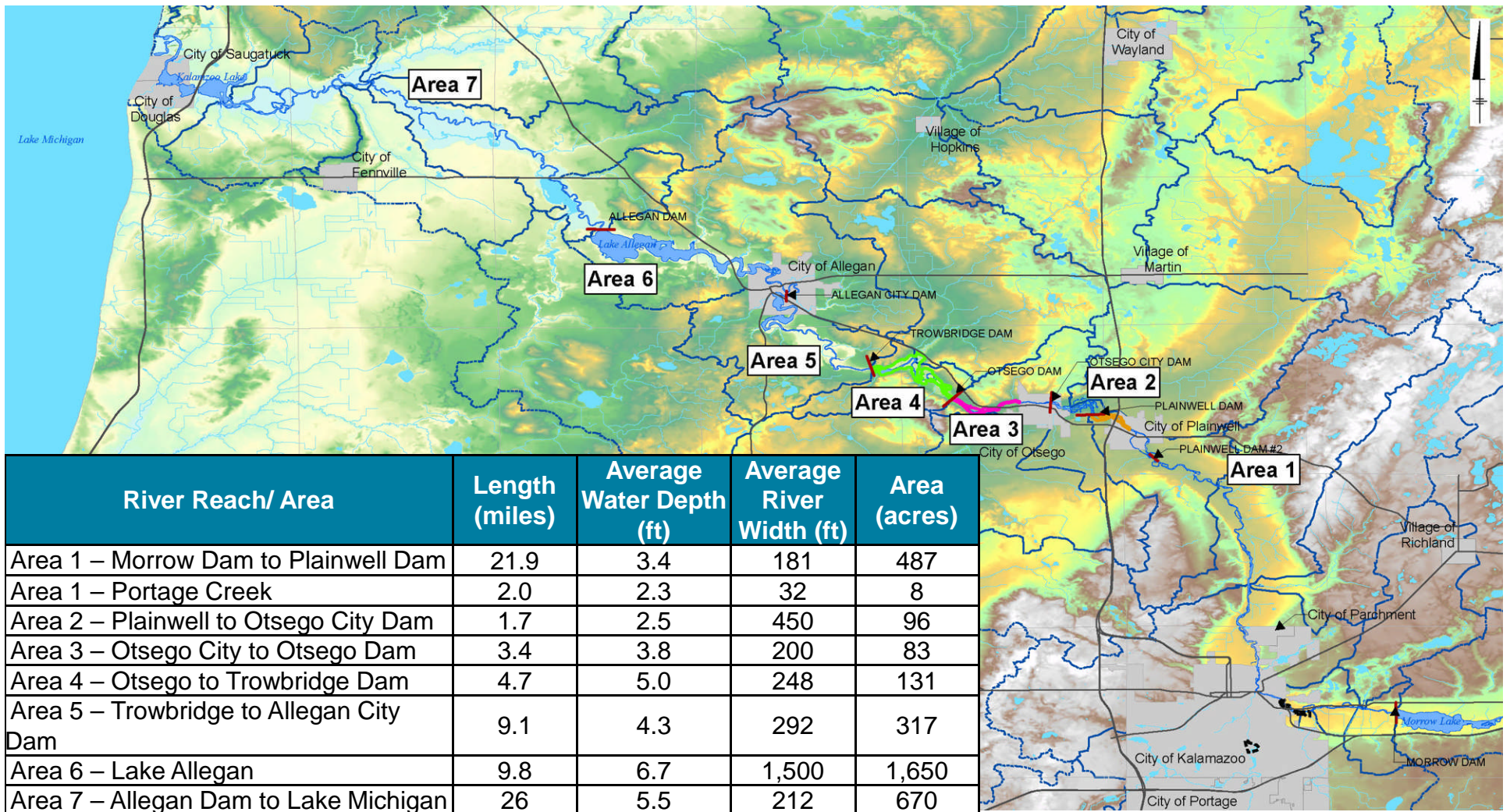


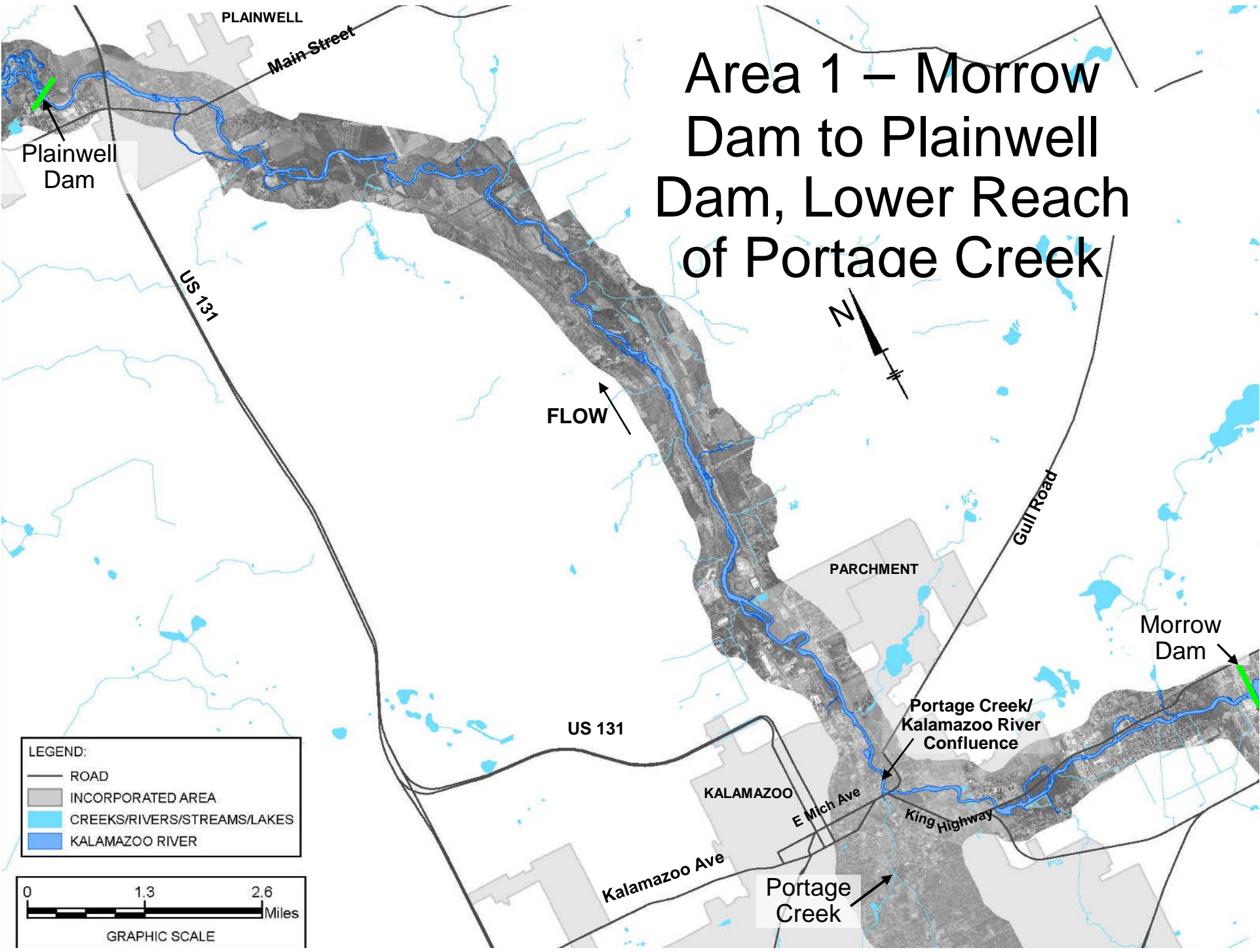
# Update on River Progress



# Areas of Operable Unit 5 (The River and Portage Creek)

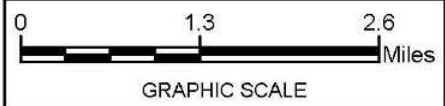


# Area 1 – Morrow Dam to Plainwell Dam, Lower Reach of Portage Creek



LEGEND:

- ROAD
- INCORPORATED AREA
- CREEKS/RIVERS/STREAMS/LAKES
- KALAMAZOO RIVER

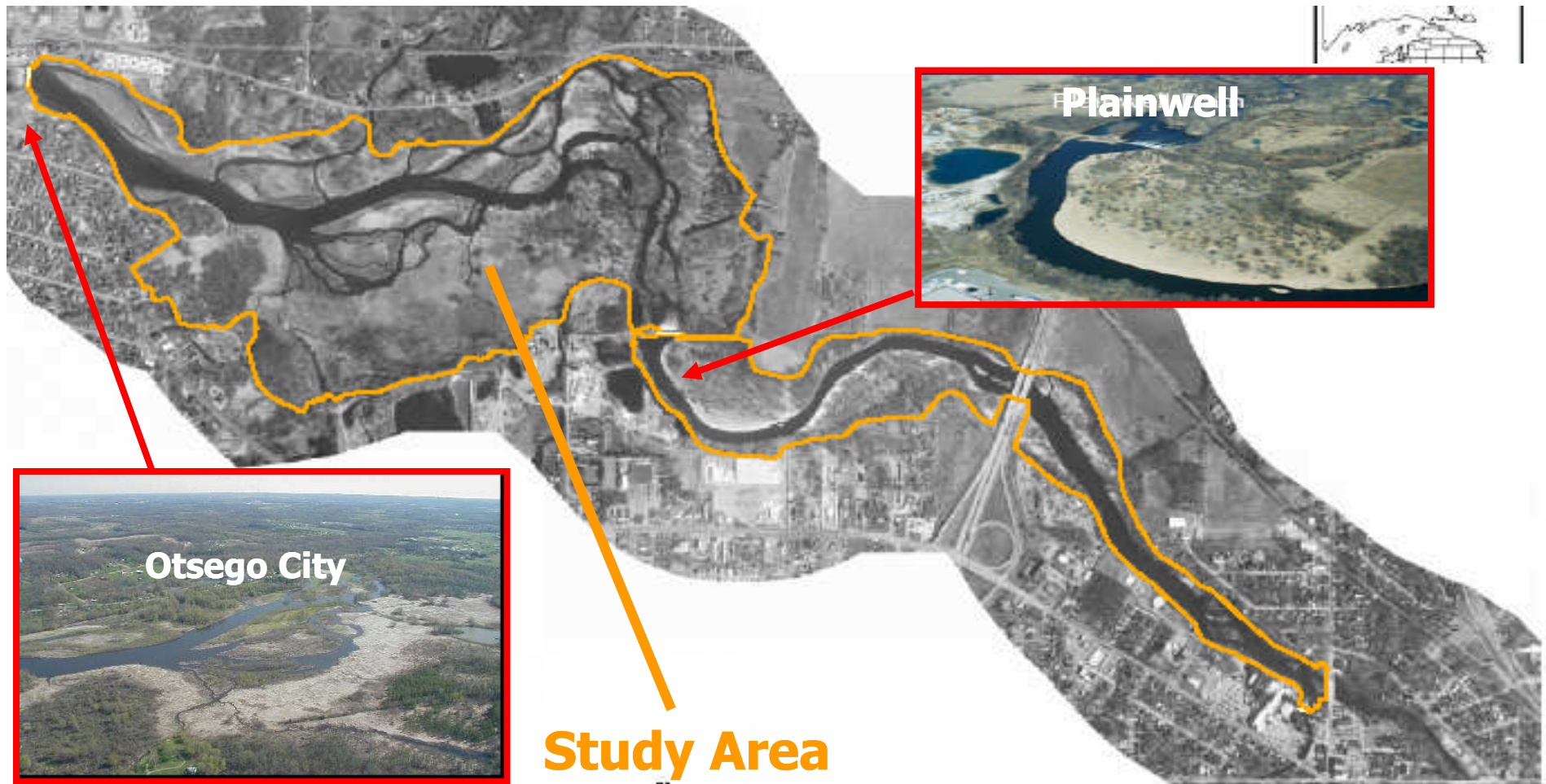


# Update on River Progress

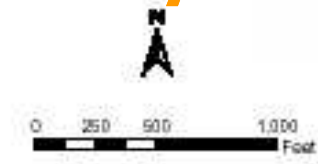
## AREA 1

- Supplemental Remedial Investigation/Feasibility Study (RI/FS) sampling complete
- Risk Assessment is being finalized
- Remedial Investigation report to be submitted by Georgia-Pacific to EPA by April 1, 2011
- Feasibility Study of potential remedial alternatives to be submitted in Fall 2011
- Final remedy decision for Area 1 in 2012

# AREA 2: Otsego City Impoundment



**Legend**  
Floodplain Soil Study Area



*DRAFT*  
Figure 3-1  
Floodplain Soil Study Area  
Kalamazoo River  
Plainwell and Otsego City Impoundments



# Update on River Progress

## AREA 2

- Finalizing Supplemental RI/FS work plan
- Conducting field reconnaissance this Fall/Winter
- Supplemental RI/FS sampling to begin Spring 2011
- Two field seasons to complete RI/FS investigation