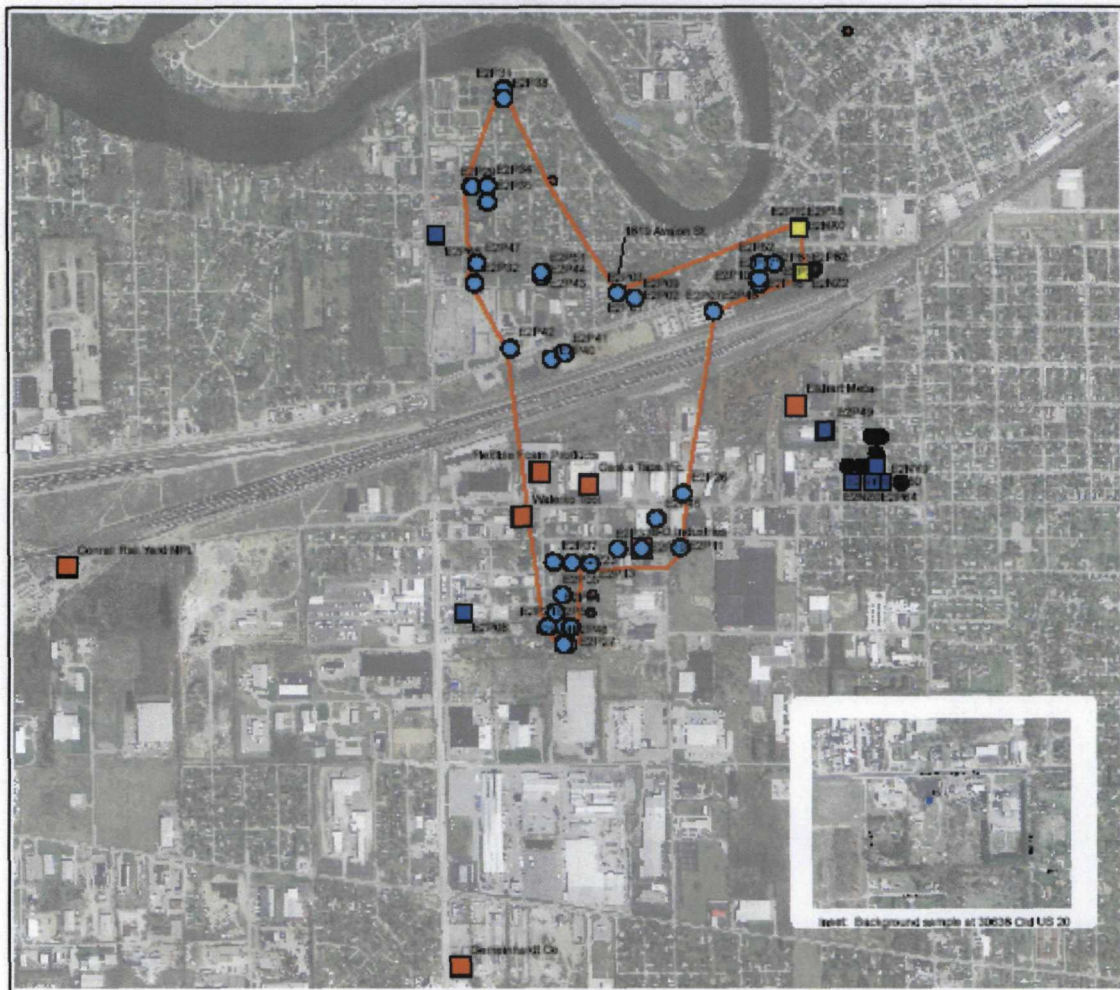




Ground Water Plume Boundary Map defined by Chlorinated VOCs from Key Findings Lists, Events 3, 4, & 5 including Potential Sources Lusher Avenue Site, Elkhart, IN, IND982073785



Lusher Avenue Ground Water Contamination Site, Elkhart County, Elkhart, IN



Legend

-  1619 Avalon St.
-  Lusher Ave site Boundary



IDEM
INDIANA DEPARTMENT OF
ENVIRONMENTAL MANAGEMENT

Mapped on July 18, 2007 by Lorraine Wright,
Applied Science Technologies, Science Services Branch
Office of Land Quality, Indiana Department of Environmental
Management

Source: Aerial - 2005 Orthophotography (UTM NAD 83 Zone 18). Site boundary was
defined based on the Project Manager's description and existing points. Site location
was obtained by address matching using the Elkhart, IN GIS website. Latitude
Longitude coordinates were converted from UTM NAD 83, Zone 18 coordinates.
This map does not contain sensitive or classified information.

DISCLAIMER:
This map does not represent a legal document. It is intended to
serve as an aid in graphic representation only. Information shown
on this map is not warranted for accuracy.