

## **Attachment 2**

### **Site Maps**

Figure 1 - Site location map

Figure 2 - Site Feature Map

Figure 3 - Institutional Controls Map

Figure 4 - Site Groundwater Monitoring Wells

Figure 5 - Surface Water Sampling Locations

Figure 6 - Quarry Sediment Sampling Locations

Figure 7 - Quarry Fish Sampling Locations

Figure 8 - Site Soil Sampling Locations

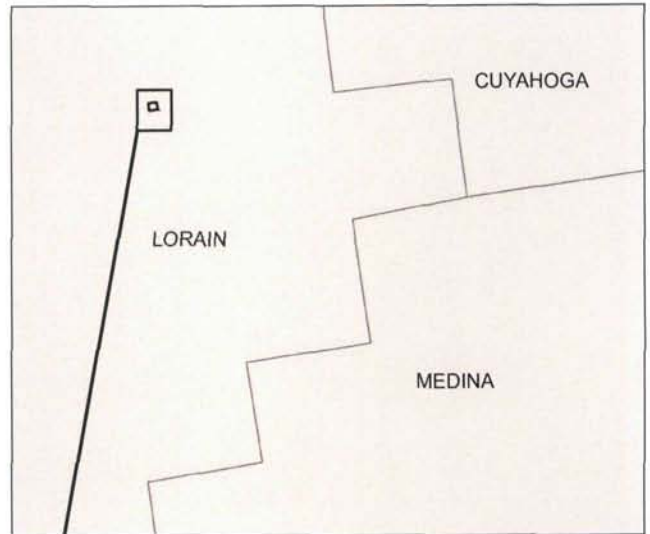


Republic Steel Corp. Quarry  
Lorain County, Ohio

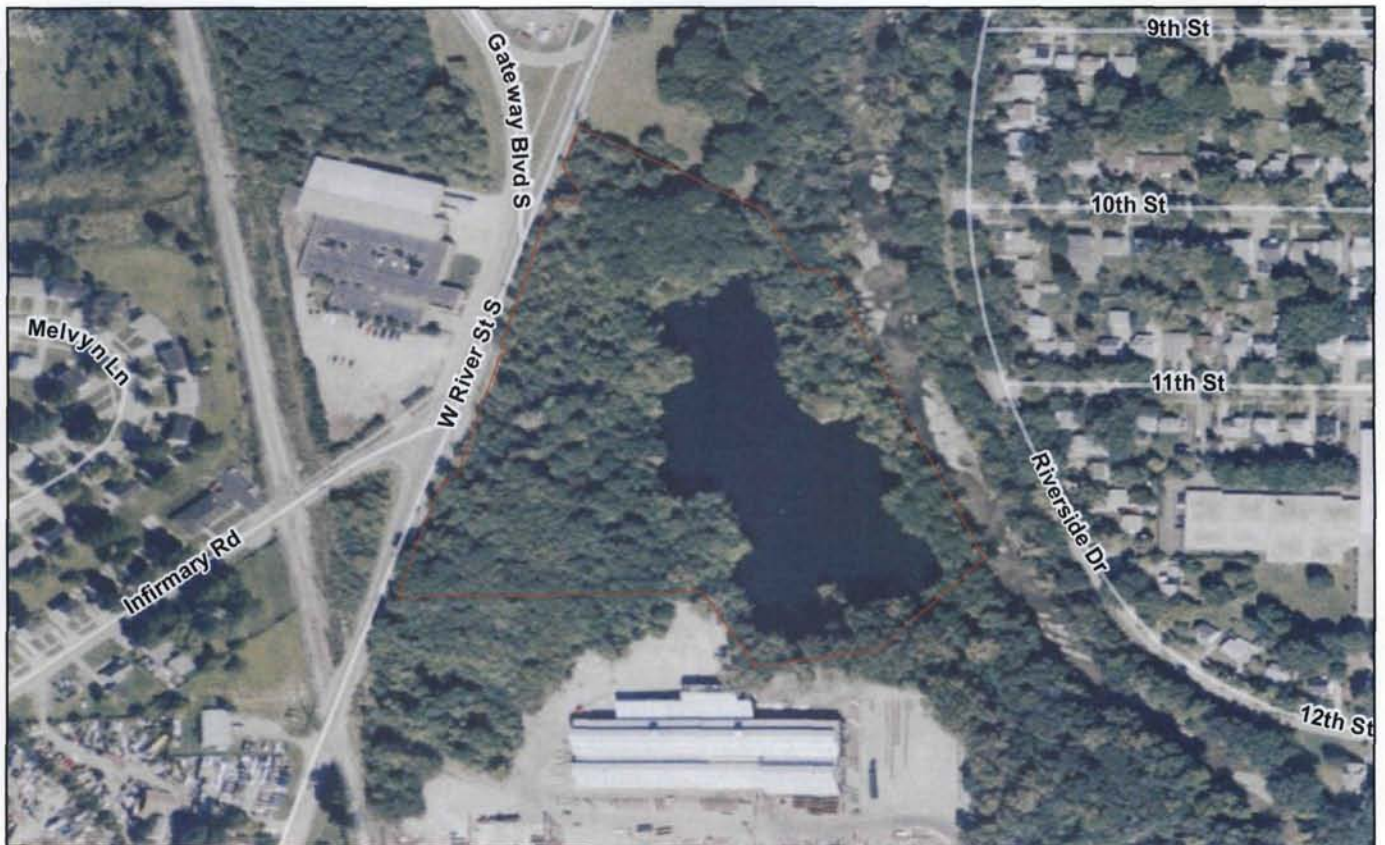
EPA ID# OHD980903447



State



County



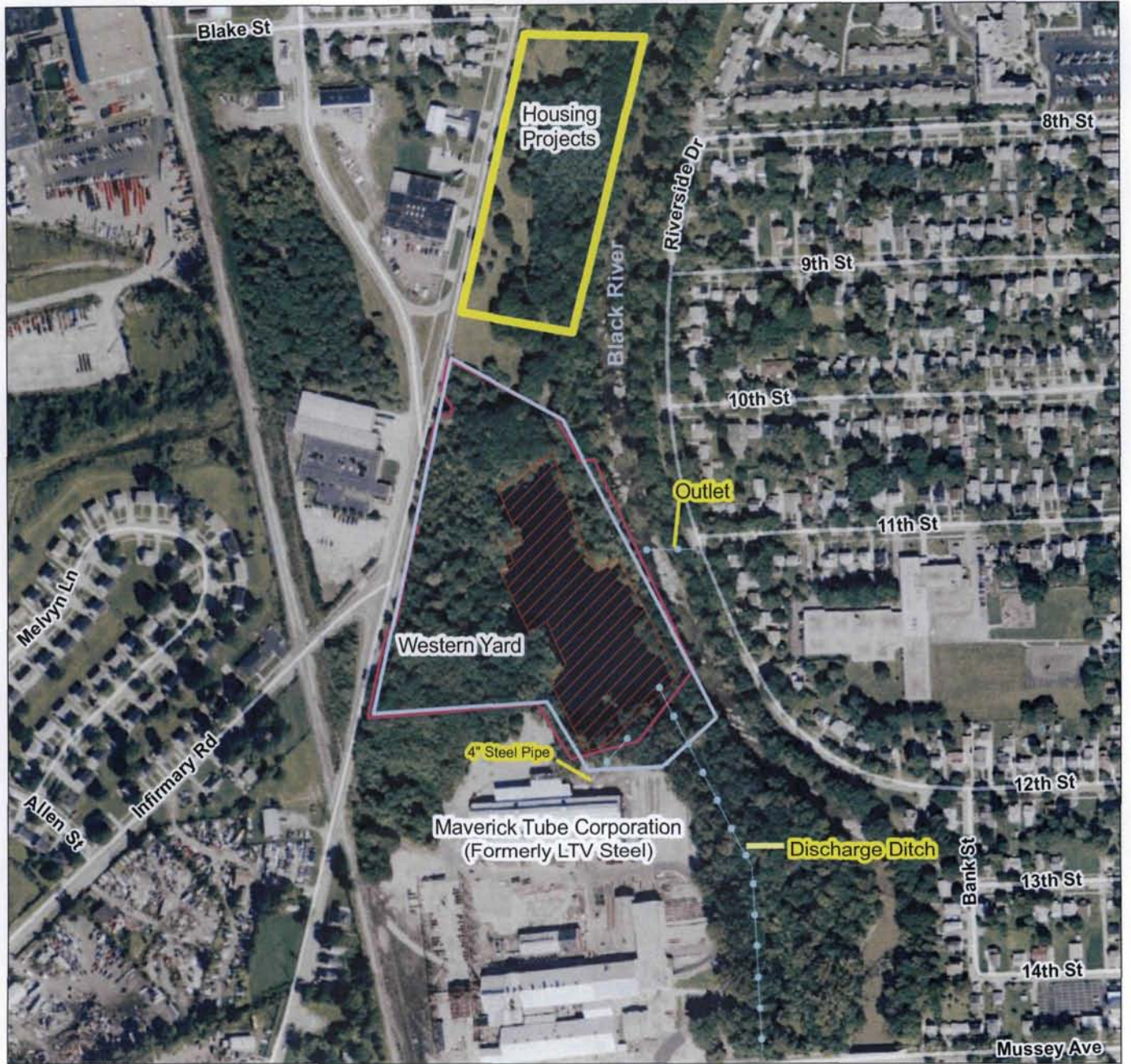
Site

Figure 1





### Site Features Map



#### Legend

- Quarry
- Site Outline
- Fence



Figure 2



EPA Disclaimer: Please be advised that areas depicted in the map have been estimated. The map does not create any rights enforceable by any party. EPA may refine or change this data and map at any time.

Produced by Julie Schilf  
U.S. EPA Region 5 on June 17, 2008  
Image Date: 2005

# Institutional Control (IC) Review

Plat Map Depicting Required and Implemented Institutional Controls

Superfund  
U.S. Environmental Protection Agency



## Republic Steel Quarry Lorain County, OH

OHD980903447



**Legend**

- Site Boundary/Fence - Access Control
- Quarry Boundary
- Parcel Boundaries
- Land and Groundwater Restrictions - Required IC
  - Heavy industrial use only
  - Water extraction prohibited
- Declaration of Restrictions (2002) - Implemented IC
  - Heavy industrial use only
  - Water extraction prohibited; potable water will be obtained from the City of Elyria

0 100 200 Feet



Figure 3

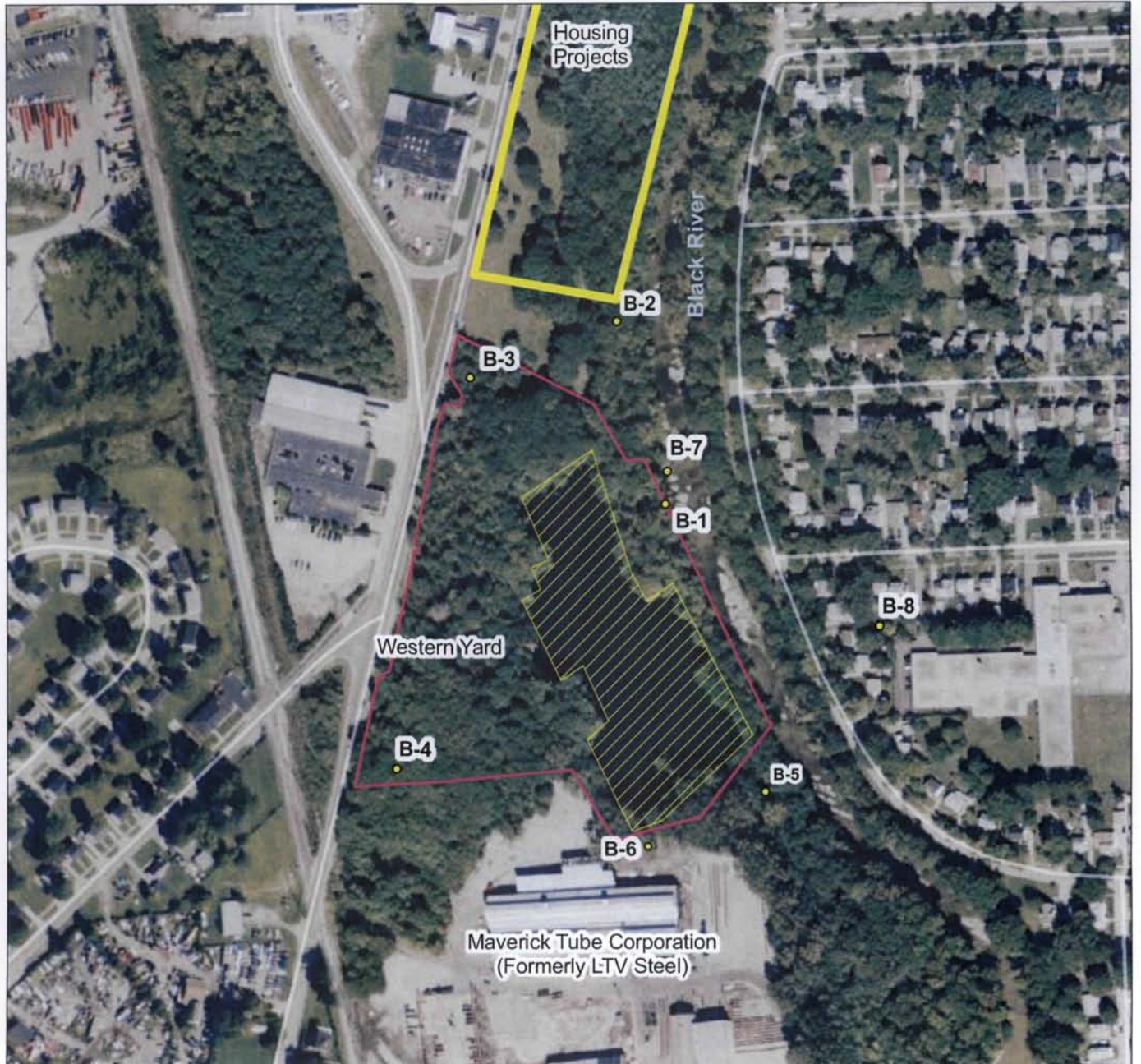


EPA Disclaimer: Please be advised that areas depicted in the map have been estimated. The map does not create any rights enforceable by any party. EPA may refine or change this data and map at any time.

Created by Sarah Backhouse  
U.S. EPA Region 5 on 3/15/2006



## Monitoring Well Locations



### Legend

- Monitoring Wells
- Quarry
- Site Outline
- Fence



0 170 340 510 680 Feet

Figure 4

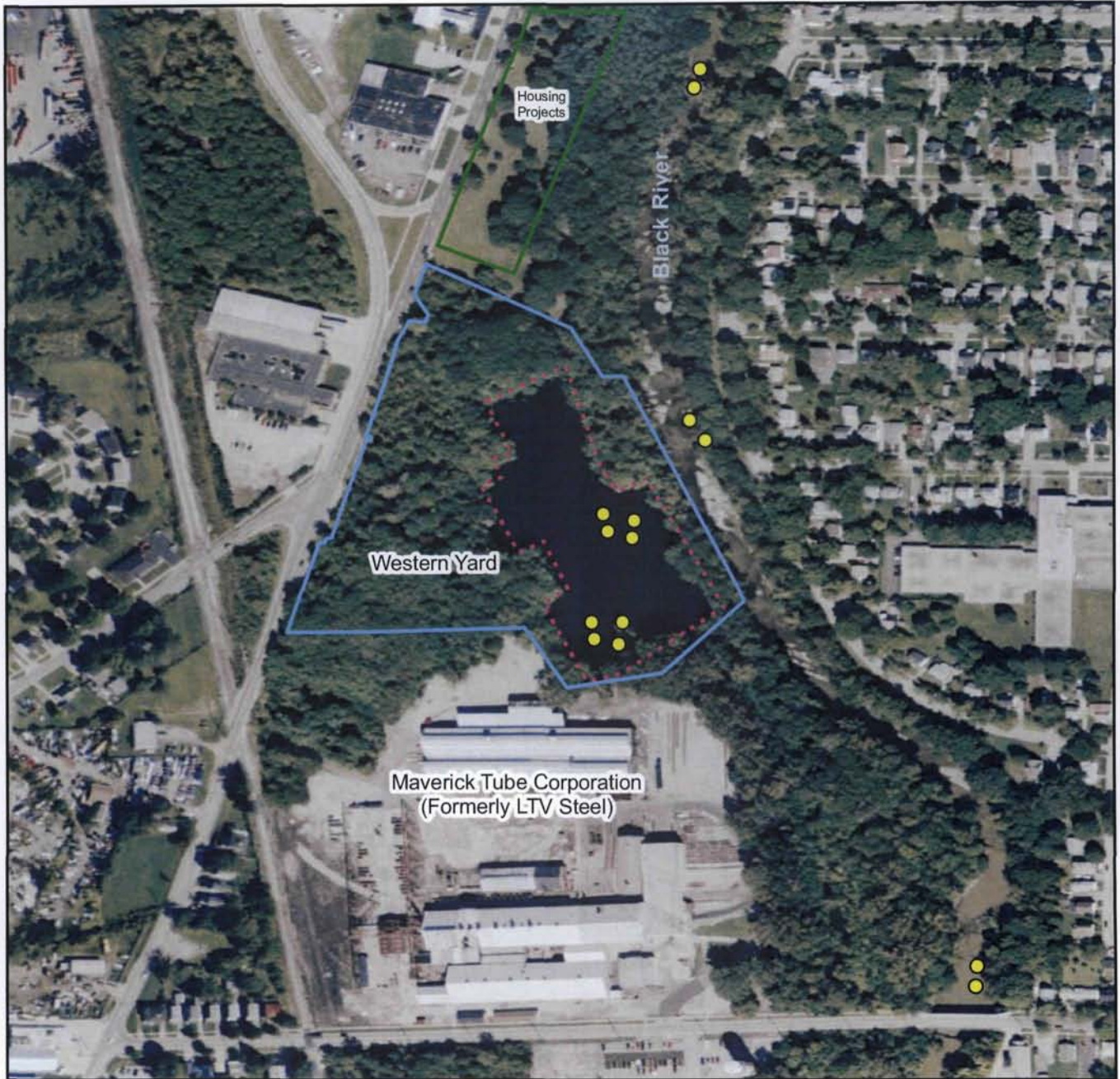


EPA Disclaimer: Please be advised that areas depicted in the map have been estimated. The map does not create any rights enforceable by any party. EPA may refine or change this data and map at any time.

Produced by Julie Schilf  
U.S. EPA Region 5 on June 17, 2008  
Image Date: 2005



## Surface Water Sampling Locations



### Legend

- Site Outline
- Surface Water Sampling Locations
- Quarry Outline



Figure 5

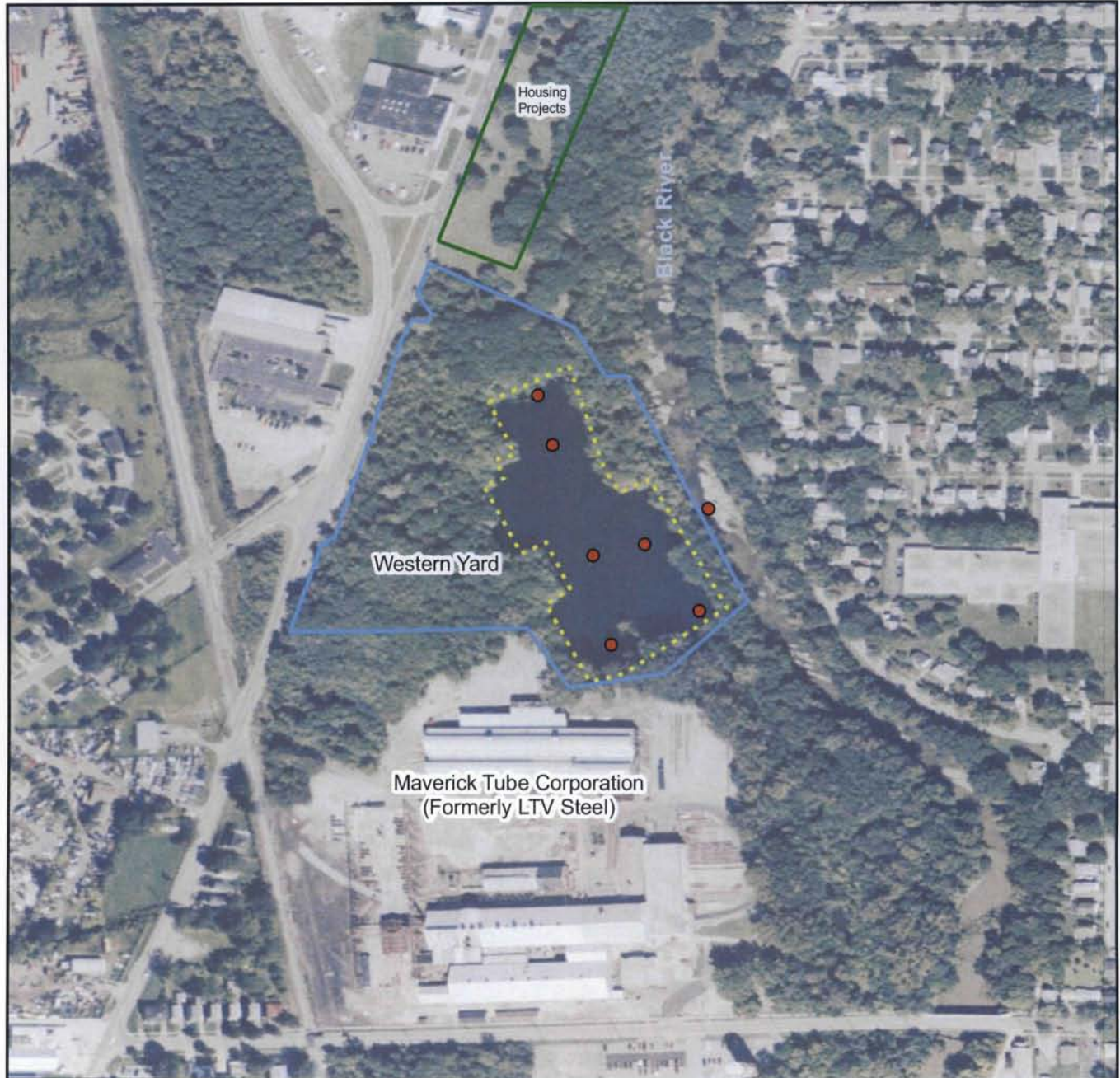


EPA Disclaimer: Please be advised that areas depicted in the map have been estimated. The map does not create any rights enforceable by any party. EPA may refine or change this data and map at any time.

Created by Julie Schilf  
U.S. EPA Region 5 on 06/19/2008  
Image Date: 2005



## Sediment Sampling Locations



### Legend

- Sediment Sampling Locations
- Site Outline
- Quarry Outline



0 280 560 Feet

Figure 6



EPA Disclaimer: Please be advised that areas depicted in the map have been estimated. The map does not create any rights enforceable by any party. EPA may refine or change this data and map at any time.

Created by Julie Schif  
U.S. EPA Region 5 on 06/19/2008  
Image Date: 2005



## Fish Sampling Gill Net Locations



### Legend

- Site Outline
- Net Locations



0 280 560  
Feet

Figure 7

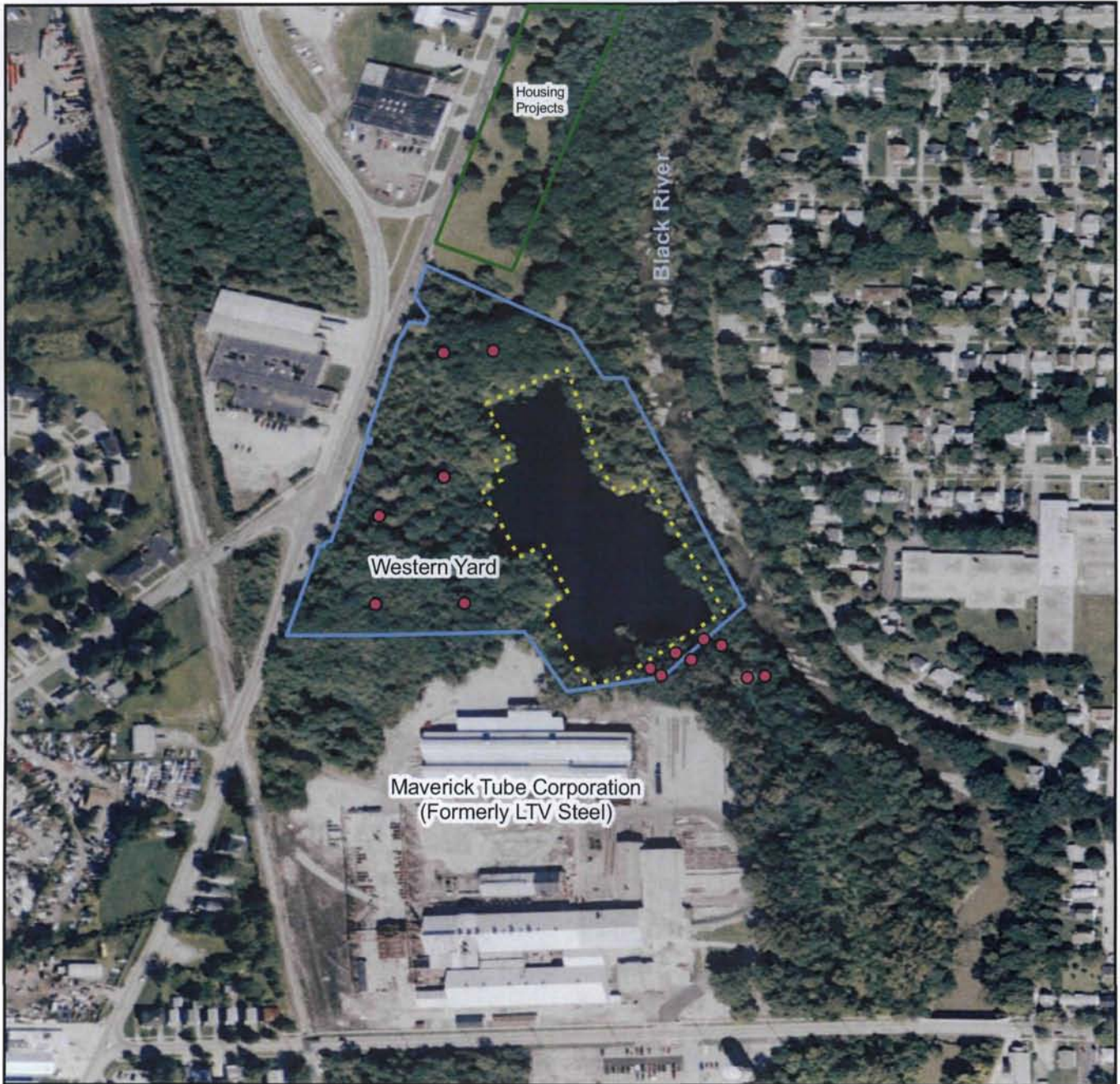


EPA Disclaimer: Please be advised that areas depicted in the map have been estimated. The map does not create any rights enforceable by any party. EPA may refine or change this data and map at any time.

Created by Julie Schilf  
U.S. EPA Region 5 on 06/27/2008  
Image Date: 2005



## Soil Sampling Locations



### Legend

- Soil Sampling Locations
- Site Outline
- ⋯ Quarry Outline



0 280 560 Feet

Figure 8



EPA Disclaimer: Please be advised that areas depicted in the map have been estimated. The map does not create any rights enforceable by any party. EPA may refine or change this data and map at any time.

Created by Julie Schif  
U.S. EPA Region 5 on 06/19/2008  
Image Date: 2005