
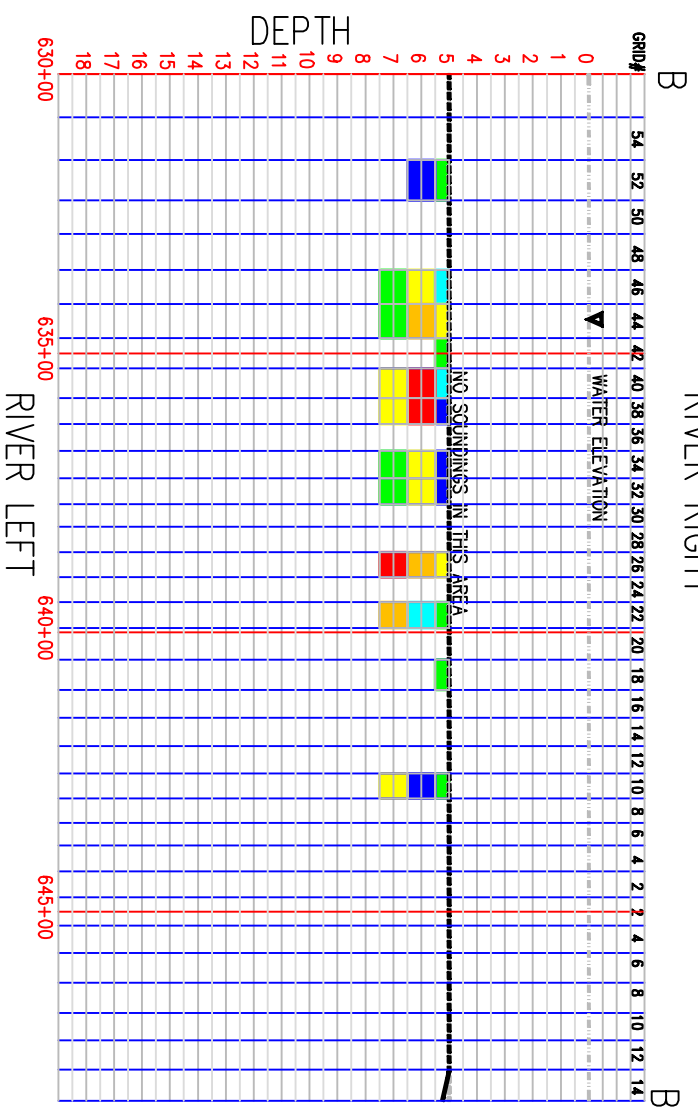
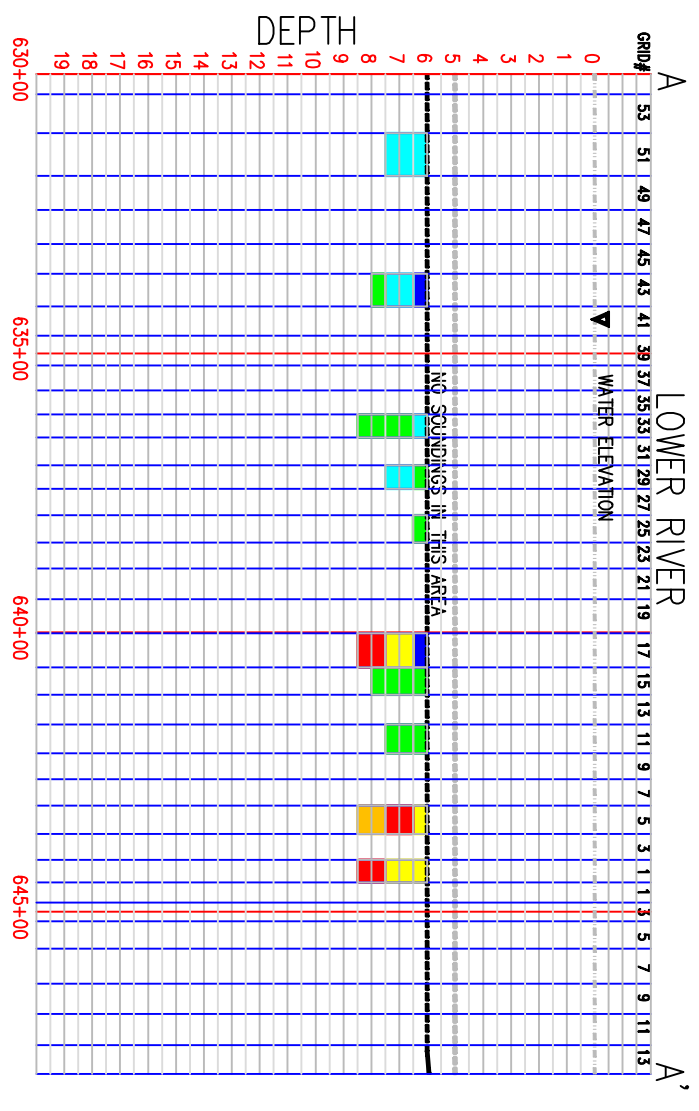
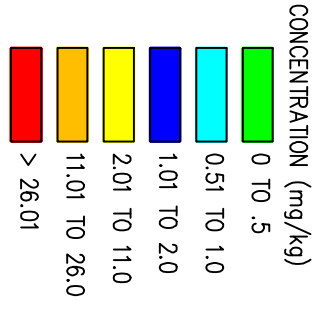
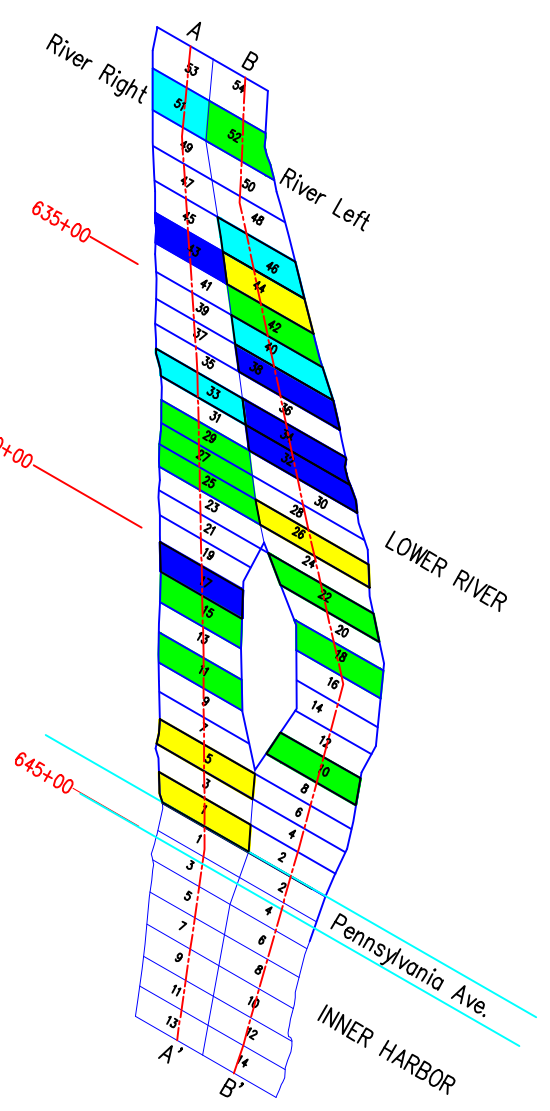


SHEBOYGAN RIVER AND HARBOR SUPERFUND SITE REMEDIAL DESIGN WORK PLAN SHEBOYGAN FALLS, WISCONSIN	 Pollution Risk Services 7870 East Kemper Road, Suite 240 Cincinnati, Ohio 45249 Phone: 513-489-2793 Fax: 513-489-2794	REVISIONS		SIGNATURES		FILE NAME:		
		NO.	BY	DATE	BY	DATE	DRAWN BY:	KDA
RIVER REACHES			△			APPROVED		
			△			REVIEWED		
			△			DESIGNED		
			△					

Scale:
SHOWN

FIGURE NO.
1



Source: 2008 Camp Marina Investigation

FILE NAME:		DRAWN BY:		KDA	DATE:	APRIL 2009
SIGNATURES		BY		DATE	APPROVED	
SIGNATURES		BY		DATE	REVIEWED	
SIGNATURES		BY		DATE	DESIGNED	

REVISIONS		
NO.	BY	DATE
△		
△		
△		

PRS Pollution Risk Services
 7870 East Kemper Road, Suite 240
 Cincinnati, Ohio 45249
 Phone: 513-489-2793
 Fax: 513-489-2794

SHEBOYGAN RIVER AND HARBOR SUPERFUND SITE
 SHEBOYGAN FALLS, WISCONSIN
PLAN VIEW & CROSS SECTION EXAMPLE

Scale:
 SHOWN

FIGURE NO.
 2