

OLS Focus Area

- Focus Area Extension Location**
- Ames-L-45
 - 2004 Expanded Focus Area Extensions
 - 2008 Final Focus Area Additions
 - 5% Frequency of Average Mid-Yard Concentrations > 400 ppm

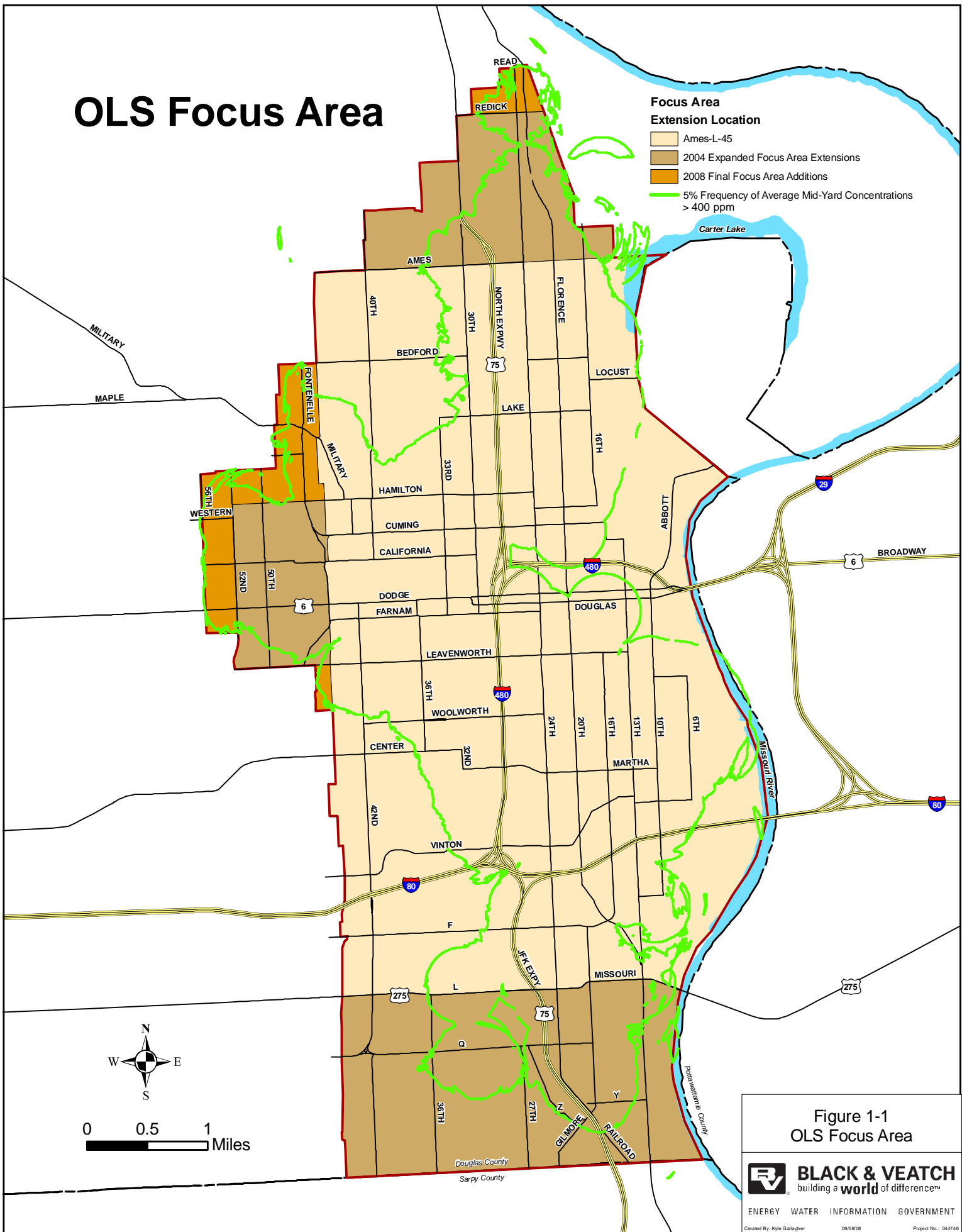


Figure 1-1
OLS Focus Area

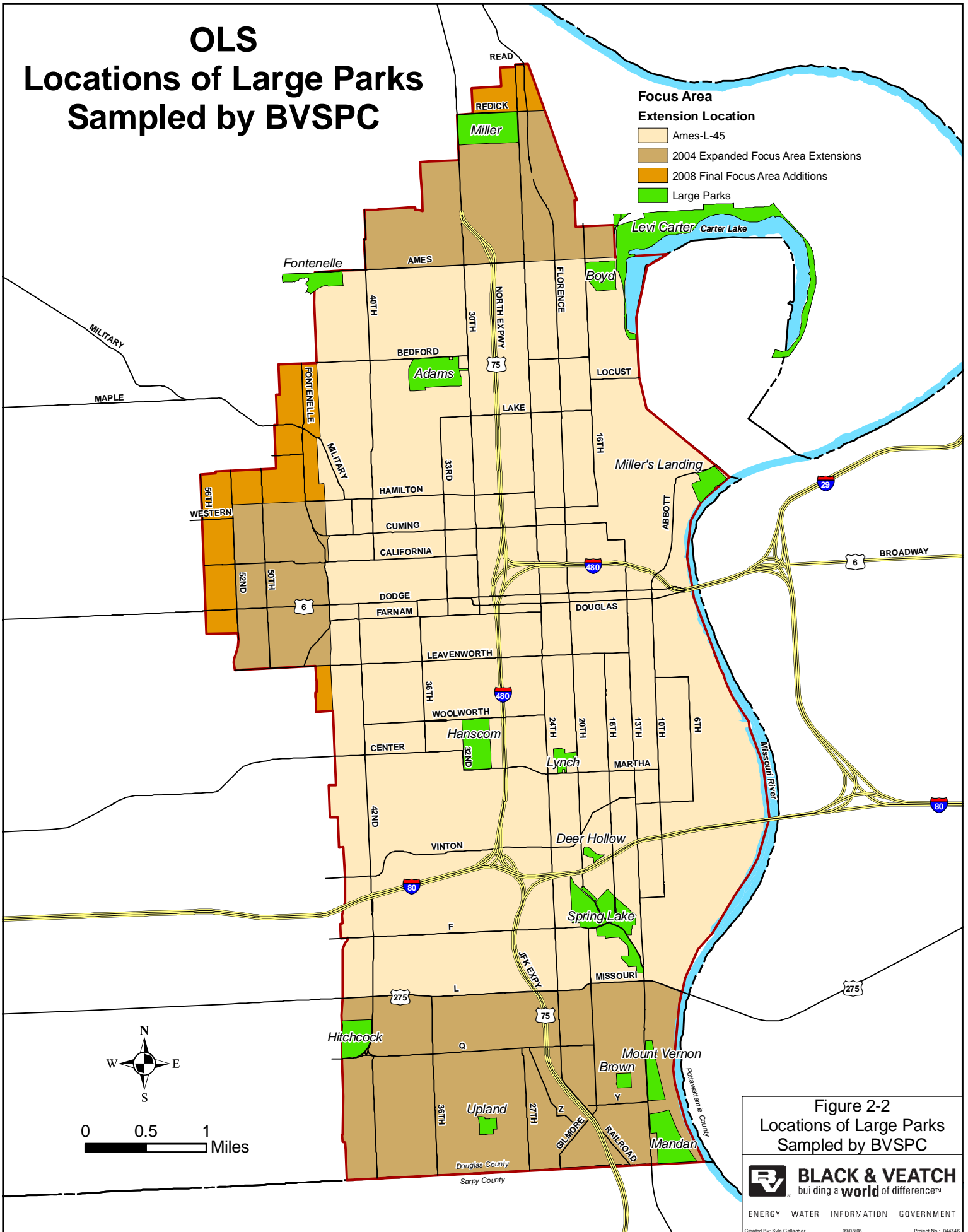


OLS Locations of Large Parks Sampled by BVSPC

Focus Area

Extension Location

- Ames-L-45
- 2004 Expanded Focus Area Extensions
- 2008 Final Focus Area Additions
- Large Parks



0 0.5 1 Miles

Figure 2-2
Locations of Large Parks
Sampled by BVSPC

BLACK & VEATCH
building a world of difference™

ENERGY WATER INFORMATION GOVERNMENT

Created By: Kyle Gallagher 09/08/08 Project No.: 046746

Figure 4-1
Comparison of XRF Data vs. Lab Data
2001 - 2007

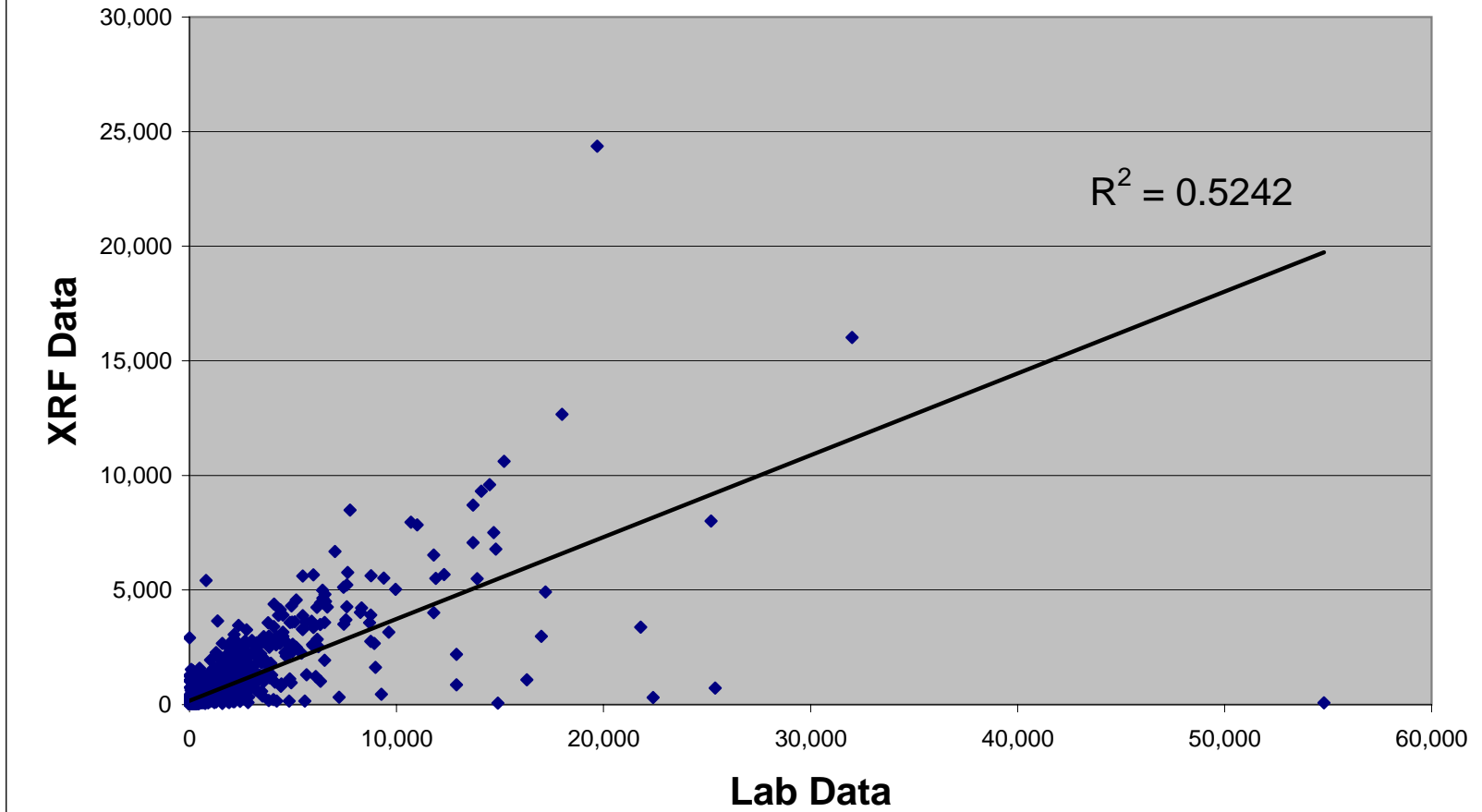


Figure 4-2
10 Mesh vs. 60 Mesh
Omaha Lead Site
Omaha, Nebraska

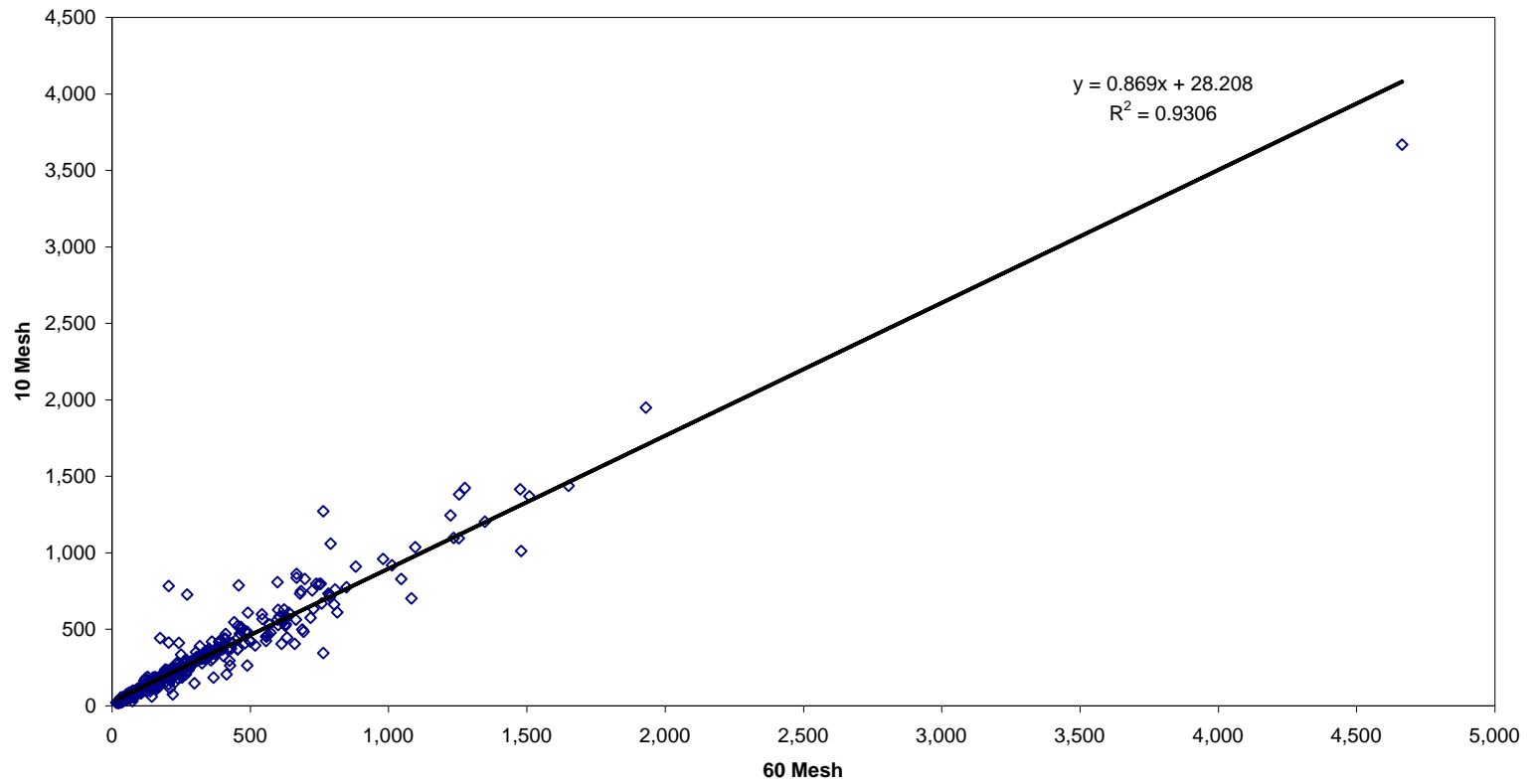
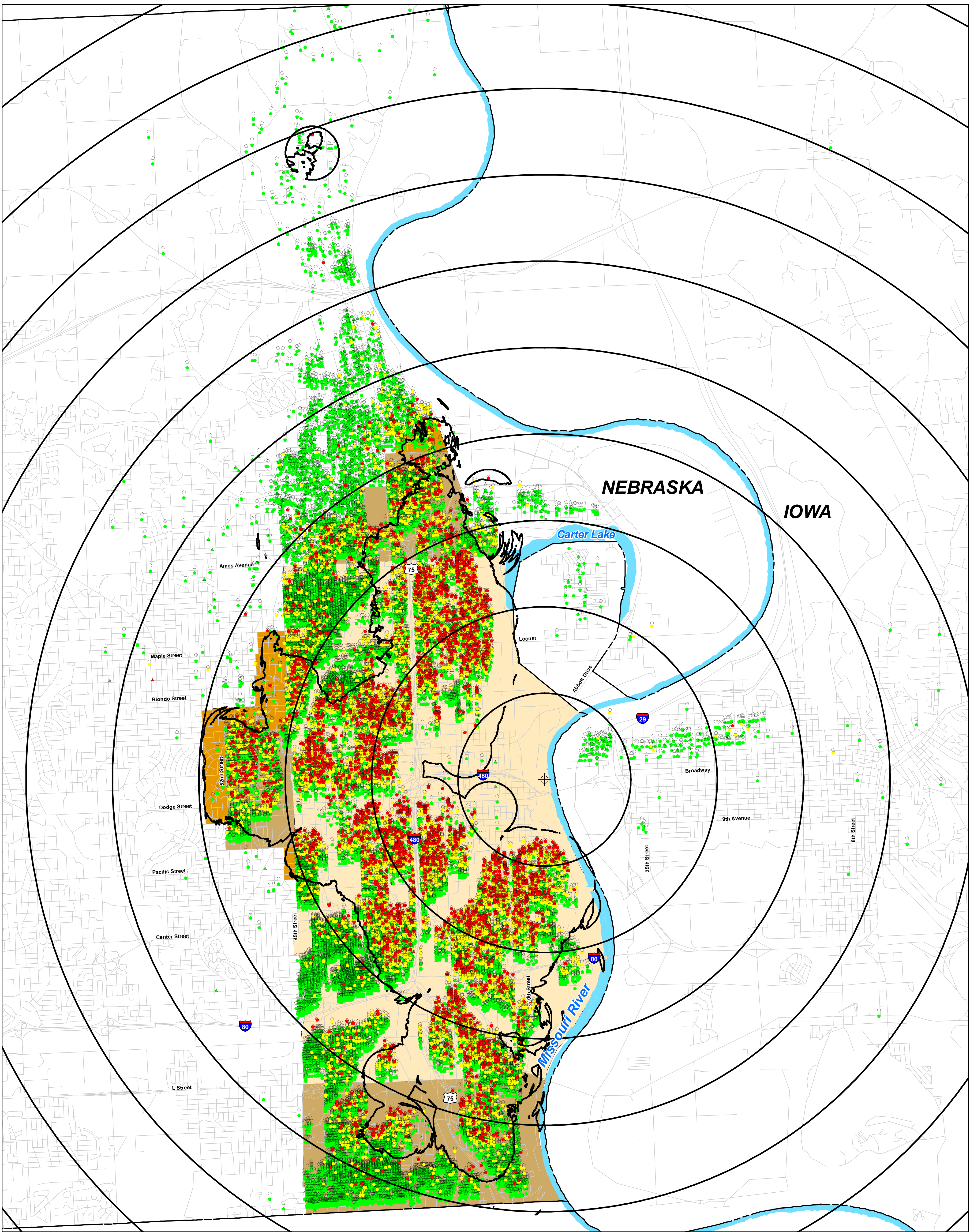
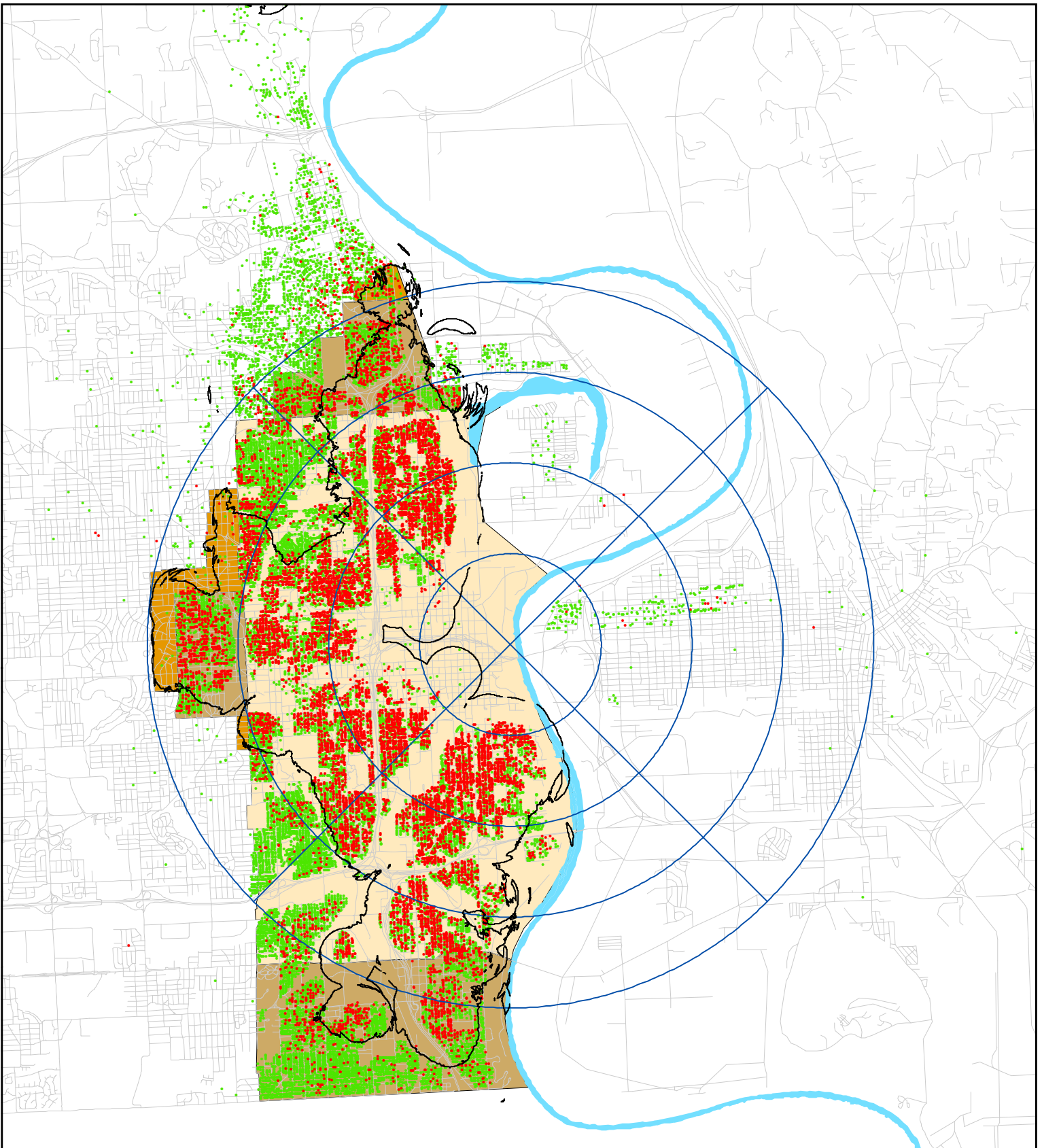


Figure 4-3 Residential, Child Care, and EBL Properties - Lead Results



| | | | |
|--|---|---|--|
| <p>LEGEND</p> <ul style="list-style-type: none"> ● Residential ▲ Child Care ■ EBL's ● 0-399 mg/kg Lead Concentrations ● 400-799 mg/kg Lead Concentrations ● 800+ mg/kg Lead Concentrations — 5% Frequency of Average Mid-Yard Concentrations > 400 ppm | <p style="text-align: center;">Results shown are based on highest non-foundation lead concentration at each property.</p> <ul style="list-style-type: none"> County Boundary/State Line Roads Missouri River/Carter Lake + Mile Radius from Site Center | <p>0 5,000 10,000 15,000 Feet</p> | <p style="text-align: center;">N W —+— E S</p> |
| <p>Focus Area</p> <p>Extension Location</p> <ul style="list-style-type: none"> Ames-L-45 2004 Expanded Focus Area Extensions 2008 Final Focus Area Additions | | <p>BLACK & VEATCH building a world of difference™</p> <p style="font-size: small;">ENERGY WATER INFORMATION GOVERNMENT Created By: Kyle Gallagher 09/08/08 Project No.: 044746</p> | |



Focus Area
Extension Location

- Ames-L-45
- 2004 Expanded Focus Area Extensions
- 2008 Final Focus Area Additions
- 5% Frequency of Average Mid-Yard Concentrations > 400 ppm

0 1 2 3 4 Miles



Notes:

1. Properties with maximum non-foundation lead result of 400 ppm or greater are indicated by red points.
2. Properties with maximum non-foundation lead result of less than 400 ppm or greater are indicated by green points.

Figure 5-1
Maximum Non-Foundation
Sample Results with 1-mile
Intervals

BLACK & VEATCH
 building a world of difference™

ENERGY WATER INFORMATION GOVERNMENT
 Created By: Kyle Gallagher 09/08/08 Project No.: 046746

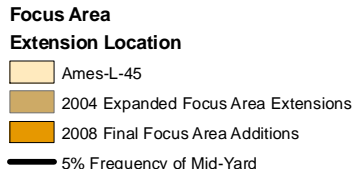
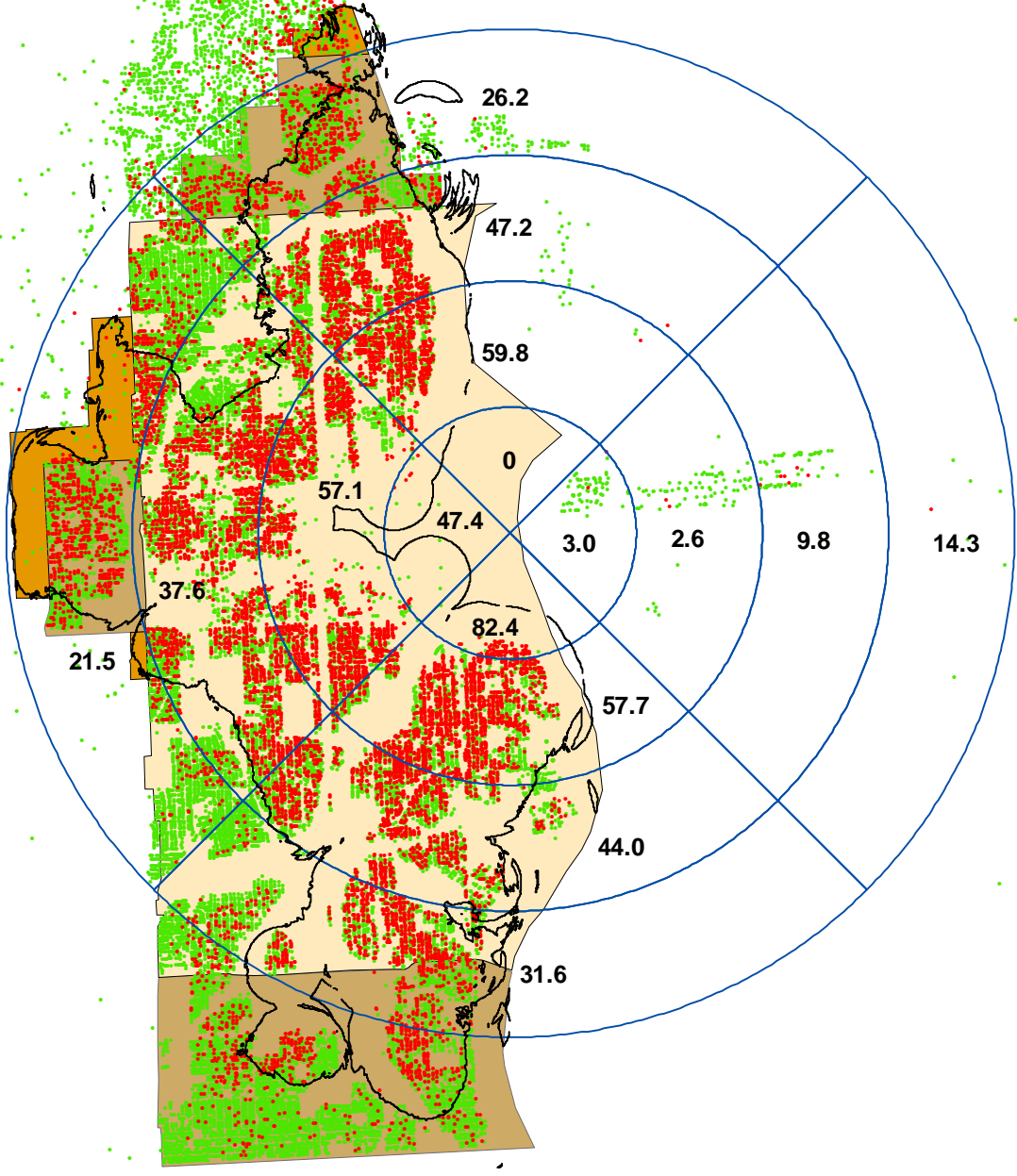



Figure 5-2
Distribution of Maximum Non-Foundation Sample Results



BLACK & VEATCH
building a world of difference™

ENERGY WATER INFORMATION GOVERNMENT

Created By: Kyle Gallagher 09/08/08 Project No.: 045745

Notes:

1. The number value within each 1-mile sector is the percentage of properties with maximum non-foundation lead result of 400 ppm or greater as indicated by red points.
2. Properties with maximum non-foundation lead result of less than 400 ppm or greater are indicated by green points.

Figure 6-1. General Site Conceptual Model for Human Exposure at the Omaha Lead Site

