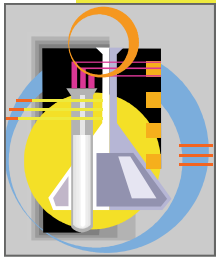


Where is it found?

Thermometers



Light Bulbs



Science Labs

Thermostats

Blood pressure

Gauges



If Mercury is Spilled

1. Stay Calm
2. Don't Touch the Mercury
3. Tell a Teacher or Adult
4. Avoid the Spill
5. Leave the Room

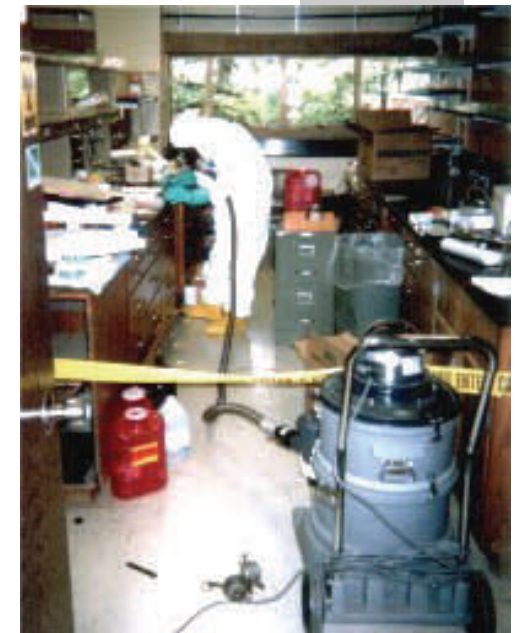


For more information on mercury go to www.epa.gov/mercury/



Region 7

Mercury in Schools: Staying Safe

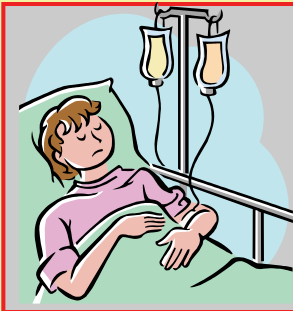


What is Mercury?

- Mercury is a naturally occurring metal that has several forms.
- Elemental mercury poses a potential health risk for schools.
- It is a silver liquid that releases a colorless, odorless toxic vapor.

Symptoms of mercury poisoning include

- Coughing
- Vomiting
- Diarrhea
- Fever
- Loose Teeth
- Sleeplessness



If Spilled.....

Mercury can cause lots of damage.

If mercury touches your stuff, like your clothes or toys, it might have to be **THROWN AWAY** because of mercury's toxic vapors.

Now everything has to be bagged...



OH NO!!!
They found Mercury



and it will be destroyed