

# CAP88-PC V4 TRAINING

## Module 2.5

### V4 Tools, Utilities, and Options



# TOOLS, UTILITIES, AND OPTIONS

- Creating and Editing Population Files
- Editing Wind Files
- Using the Migration Utility
- Options
  - General
  - Population/Wind Files
  - Advanced





# CREATING OR OPENING POPULATION FILES

- The user can create a new population file by selecting File → New → Population File
- The user can edit existing population files by
  - Selecting Tools → Population File List and double-clicking on the population file to be edited, or
  - Selecting File → Open → Open Population File



# EDITING POPULATION FILES

From the Location tab, the user can :

- Enter the name of the facility
- Enter the location of the facility
- Enter the city
- Select the state from the drop-down menu
- Enter the latitude of the facility (must be a number)
- Enter the longitude of the facility (must be a number)
- Select the census year from a drop-down menu
- Enter a comment





# POPULATION FILE EDITOR EXAMPLE

CAP88-PC - [Population File Edit - sprngfld.pop]

File Tools Window Help

Location Distances Direction Values

Name Springfield Power Plant

Location 100 Industrial Way

City Springfield

State Oregon

Latitude 46.4333

Longitude 119.5833

Census 1990

Comments Intended for Software Testing Purposes Only

ERRORS

CHANGES



# EDITING POPULATION FILES

From the Distances tab, the user can enter between 1 and 20 distances.

- Distances must be ascending order
- Midpoint distances are calculated by the code, and are read-only.



# POPULATION FILE EDITOR EXAMPLE

CAP88-PC - [Population File Edit - sprngfld.pop]

File Tools Window Help

Location Distances Direction Values

Distances 13 **Only distances greater than 0 are saved. Be careful not to skip distances!**

Distances

|       |          |          |          |          |          |
|-------|----------|----------|----------|----------|----------|
| 1 - 5 | 500.00   | 1000.00  | 2000.00  | 3000.00  | 4000.00  |
| 6-10  | 5000.00  | 10000.00 | 20000.00 | 30000.00 | 40000.00 |
| 11-15 | 50000.00 | 60000.00 | 80000.00 | 0.00     | 0.00     |
| 16-20 | 0.00     | 0.00     | 0.00     | 0.00     | 0.00     |

Midpoints (read only, function of Distances)

|       |          |          |          |          |          |
|-------|----------|----------|----------|----------|----------|
| 1 - 5 | 250.00   | 750.00   | 1500.00  | 2500.00  | 3500.00  |
| 6-10  | 4500.00  | 7500.00  | 15000.00 | 25000.00 | 35000.00 |
| 11-15 | 45000.00 | 55000.00 | 70000.00 | 0.00     | 0.00     |
| 16-20 | 0.00     | 0.00     | 0.00     | 0.00     | 0.00     |

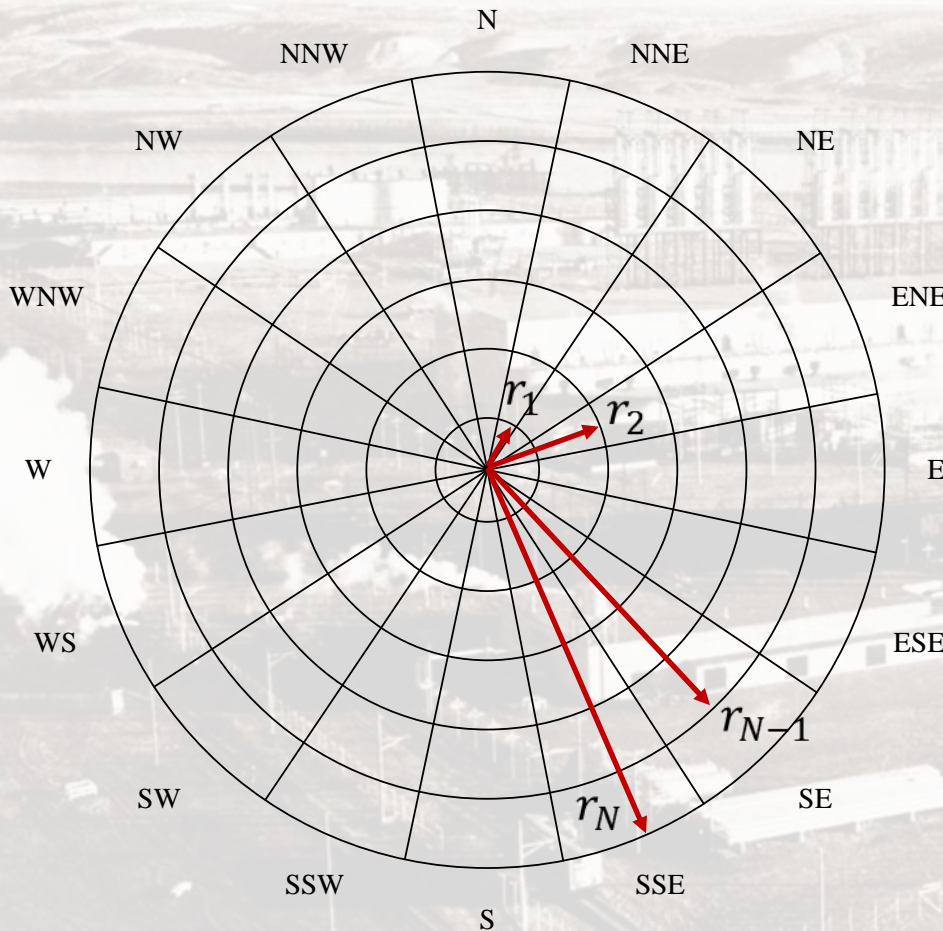
ERRORS

CHANGES





# EDITING POPULATION FILES



- Distances define the outer radius of each ring, with the inner radius being the outer distance of the previous ring. The innermost “ring” is a circle
- From the Direction Values tab, the user can enter the population in that sector





# POPULATION FILE EDITOR EXAMPLE

CAP88-PC - [Population File Edit - sprngfld.pop]

File Tools Window Help

Location Distances Direction Values

|     | 500.0 | 1000.0 | 2000.0 | 3000.0 | 4000.0 | 5000.0 | 10000.0 | 20000.0 | 300  |
|-----|-------|--------|--------|--------|--------|--------|---------|---------|------|
| ▶ N | 0     | 0      | 0      | 0      | 0      | 0      | 0       | 0       | 0    |
| NNW | 0     | 0      | 0      | 0      | 0      | 0      | 0       | 0       | 0    |
| NW  | 0     | 0      | 0      | 0      | 0      | 0      | 0       | 0       | 0    |
| WNW | 0     | 0      | 0      | 0      | 0      | 0      | 66      | 0       | 0    |
| W   | 0     | 0      | 0      | 0      | 0      | 0      | 0       | 0       | 603  |
| WSW | 0     | 0      | 0      | 0      | 0      | 0      | 0       | 878     | 802  |
| SW  | 0     | 0      | 0      | 0      | 0      | 0      | 0       | 0       | 1416 |
| SSW | 0     | 0      | 0      | 0      | 0      | 0      | 0       | 0       | 1508 |
| S   | 0     | 0      | 0      | 0      | 0      | 0      | 0       | 1581    | 1460 |
| SSE | 0     | 0      | 0      | 0      | 0      | 0      | 0       | 2195    | 392  |
| SE  | 0     | 0      | 0      | 0      | 0      | 0      | 0       | 1097    | 1847 |
| ESE | 0     | 0      | 0      | 0      | 0      | 0      | 0       | 0       | 1298 |
| F   | 0     | 0      | 0      | 0      | 0      | 0      | 0       | 0       | 0    |

ERRORS

CHANGES



# OPENING WIND FILES

- The user can edit existing population files by
  - Selecting Tools → Wind File List and double-clicking on the population file to be edited, or
  - Selecting File → Open → Open Wind File
- At this time, the user cannot modify the meteorological data (average wind speeds, directional frequencies, and Pasquill stability class frequency) from within CAP88-PC
- The user can edit the information about the meteorological station





# EDITING WIND FILES

The user can :

- Enter the station name
- Select the state from the drop-down menu
- Enter the latitude of the station (must be a number)
- Enter the longitude of the station (must be a number)
- Select the time zone from a drop-down menu
- Enter the record period
- Enter the average temperature during the period
- Enter a comment



# WIND FILE EDITOR

CAP88-PC - [Wind File Edit - SPRG2000.wnd]

File Tools Window Help

Station Name: Springfield

State: Oregon

Latitude: 44.05306

Longitude: -122.99111

Time Zone: 8

Record Period: 1995-2004

Avg Period Temp: 10 Celsius

Comments: Fictional Data for Software Testing Purposes Only

ERRORS

CHANGES





# MIGRATION TOOL

- The migration utility is used to move datasets, population, and wind files to new locations, and to upgrade their format from Version 3 to Version 4. It is typically used when CAP88-PC is first run.
- Note that only data files from the 12/9/2007 release of CAP88-PC Version 3 can be directly upgraded. If you have older datasets, try opening them in the 12/9/2007 version and save the dataset to put it in the proper format



# MIGRATION TOOL

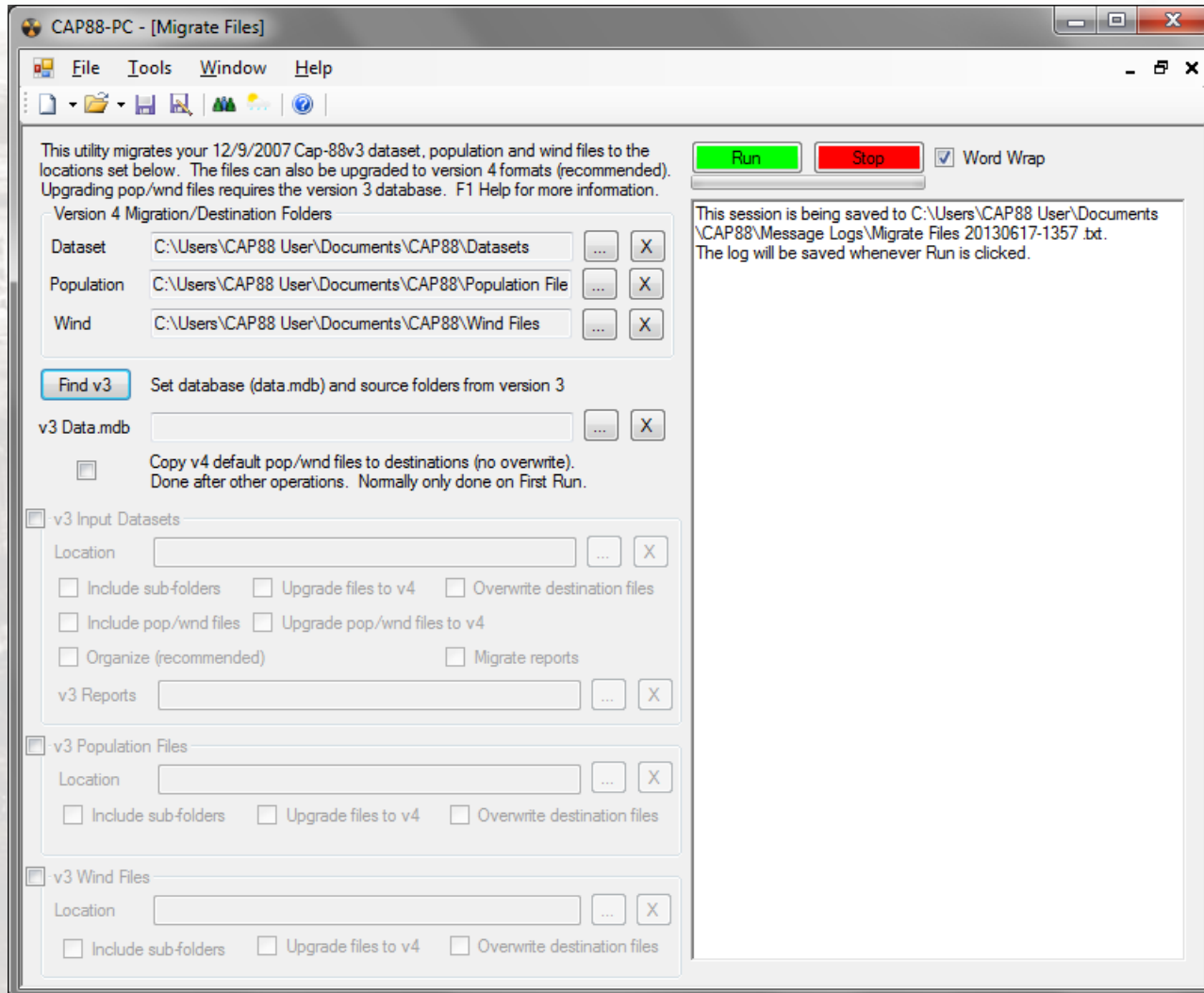
The Migration Tool also allows the user to choose the location for the following folders:

- Dataset Destination Folder (the target folder where the Version 4 dataset files will be placed)
- Population Destination Folder (the population file destination folder)
- Wind Destination Folder (the wind file destination folder)

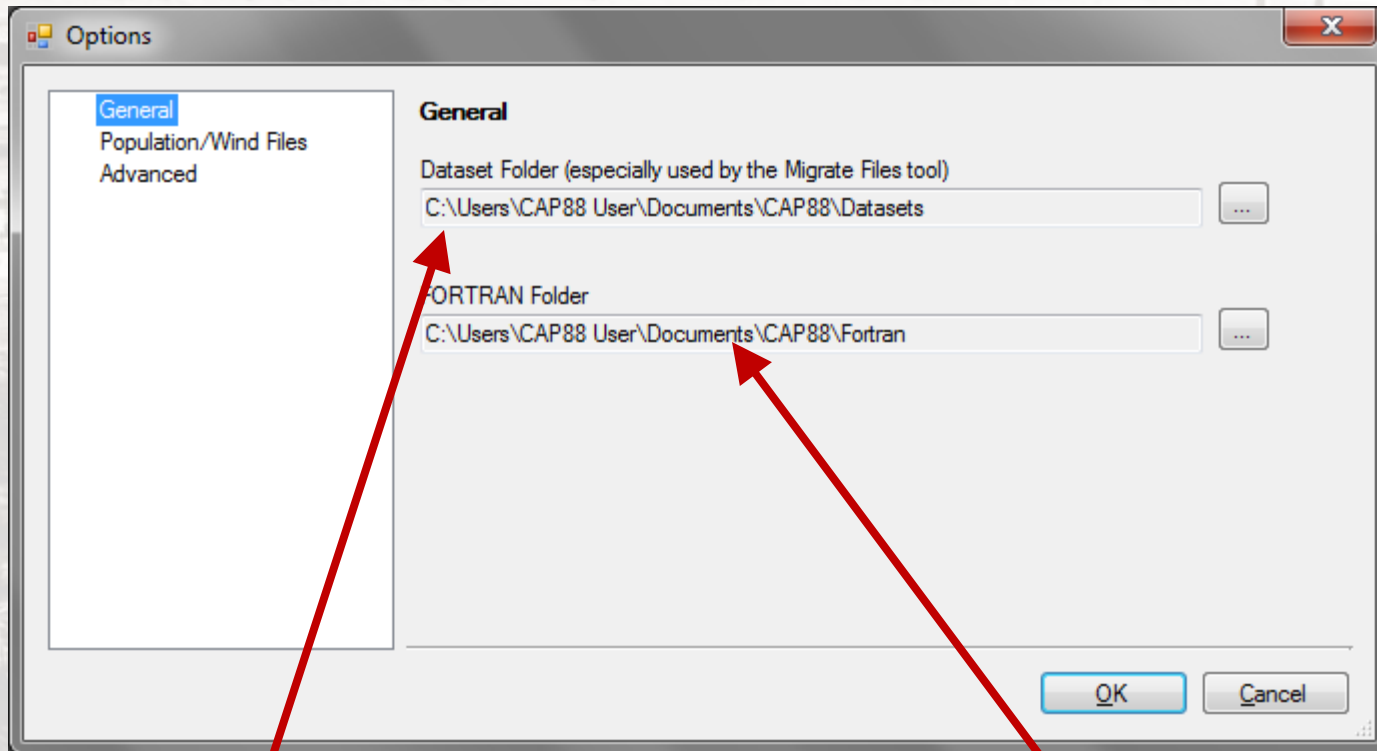




# MIGRATION UTILITY



# OPTIONS - GENERAL



Location of Datasets

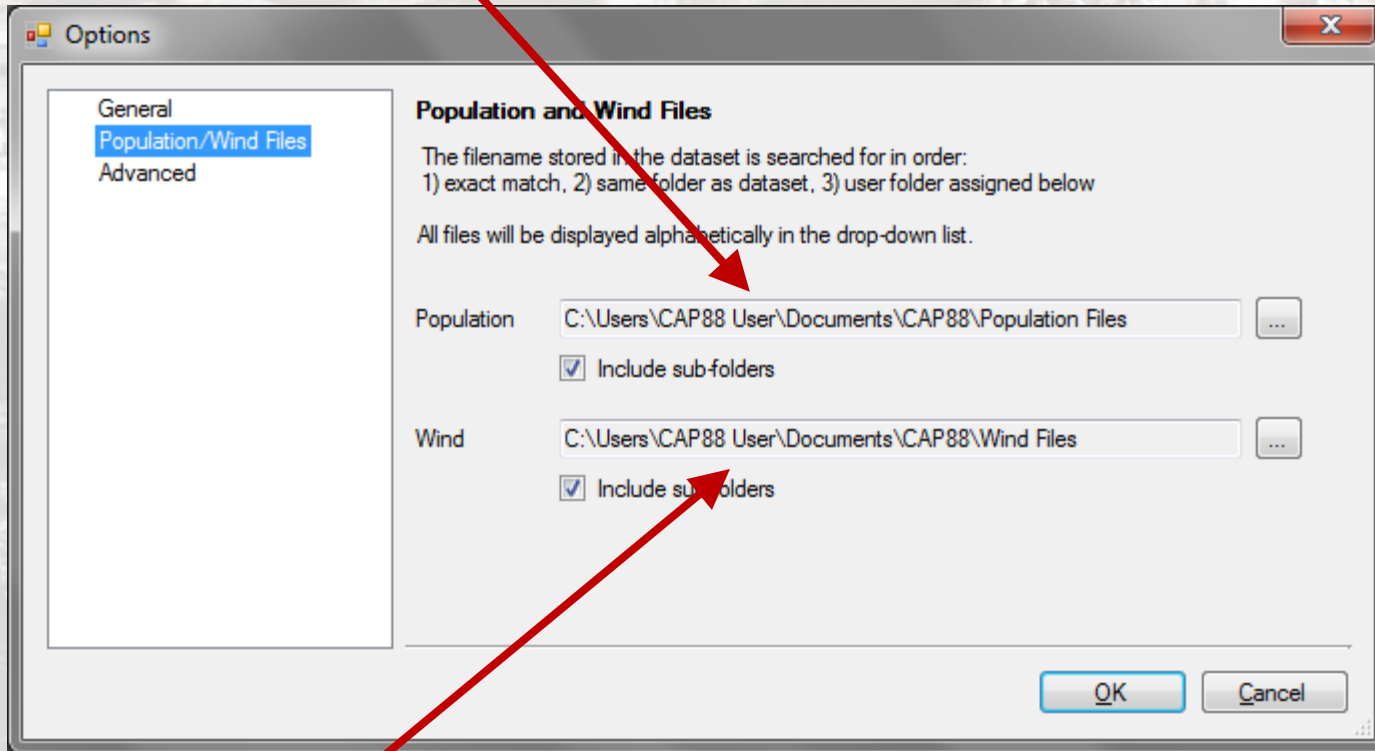
Location of Fortran Code





# OPTIONS – POPULATION/WIND FILES

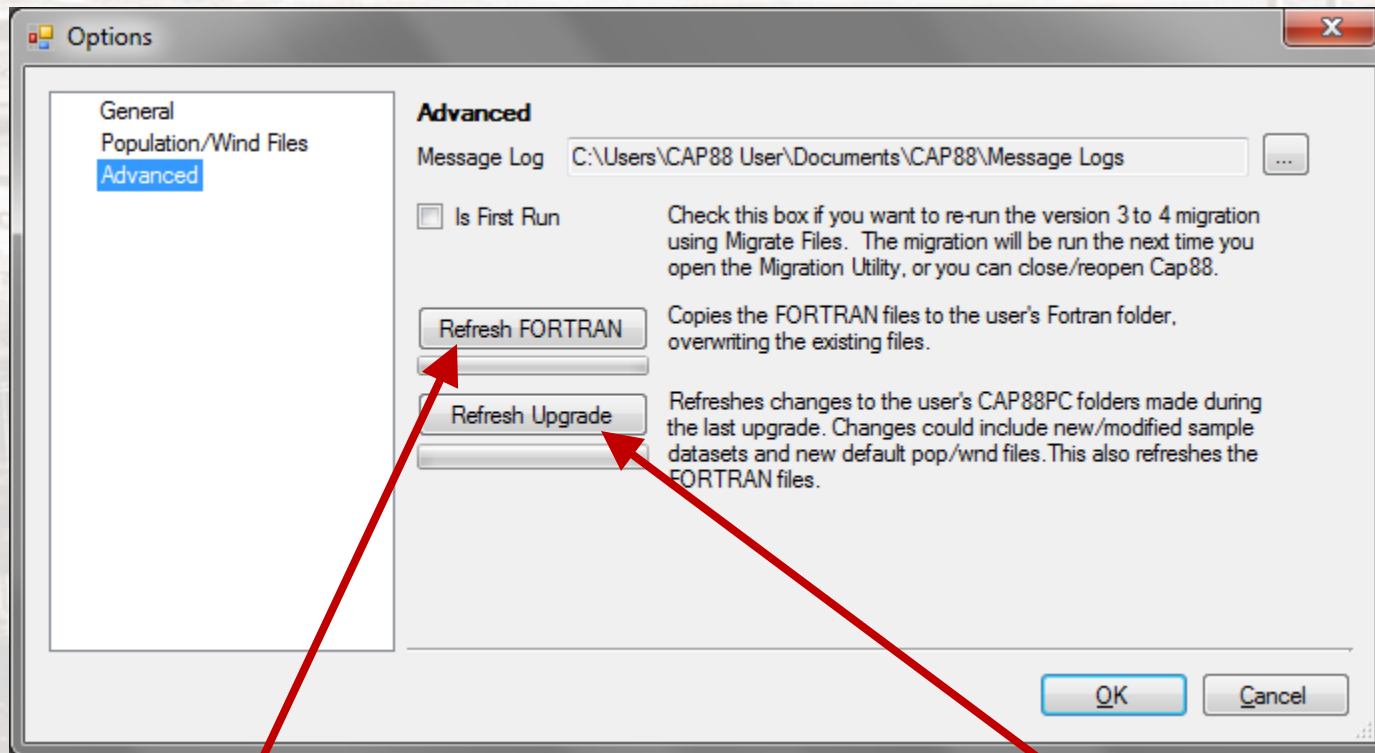
Location of Population Files



Location of Wind Files



# OPTIONS - ADVANCED



Refresh FORTRAN

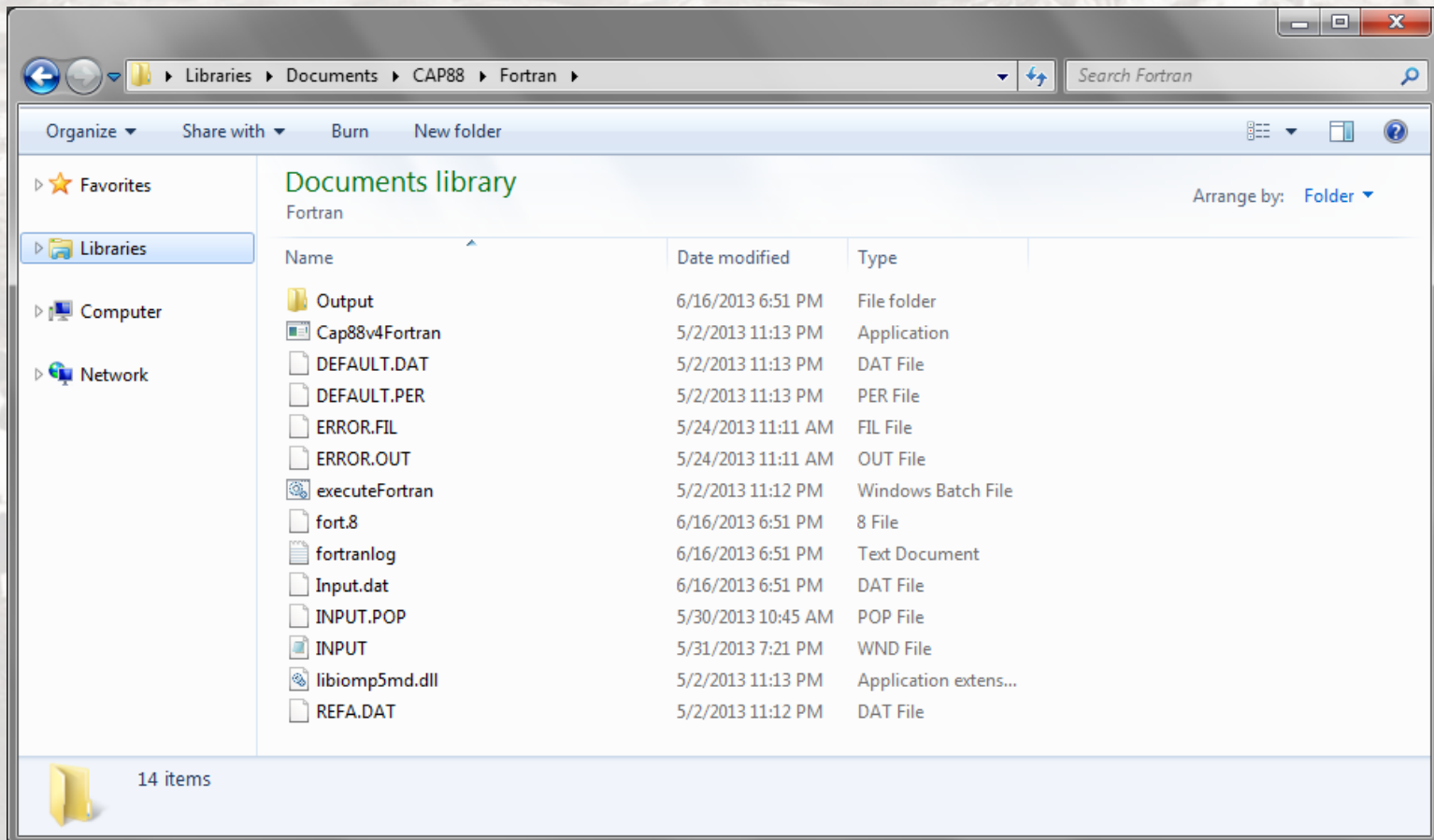
Refresh Upgrade





# REFRESH FORTRAN

Copies FORTRAN files to the user's folder.



# REFRESH UPGRADE

Refreshes changes to the user's CAP88PC made during the last upgrade by copying folders in the user's Documents folder with those in the Default Files folder.

