

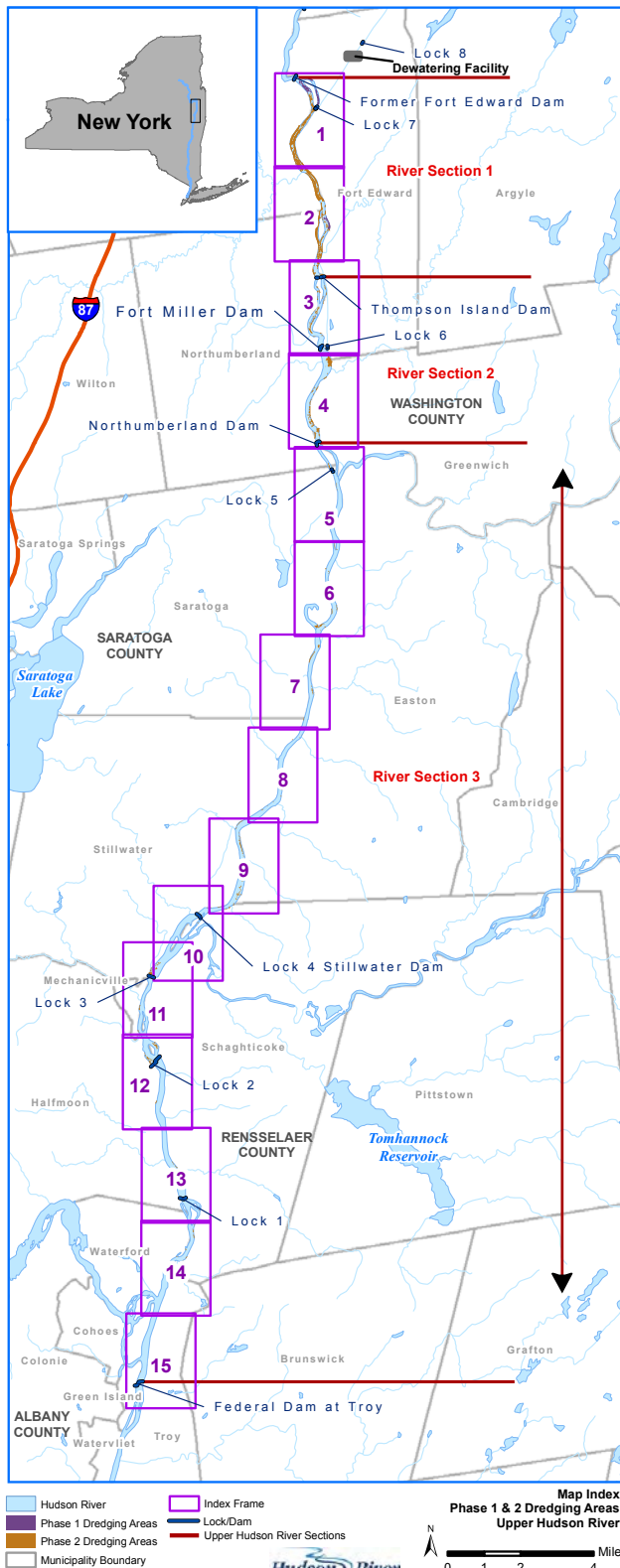


Hudson River PCBs SUPERFUND SITE

Region 2: NJ, NY, PR, VI • 290 Broadway, New York, NY 10007

Phase 2 Phase 2 Overview Factsheet

2015



Dredging Overview

In February 2002, the U.S. Environmental Protection Agency issued a Record of Decision (ROD) for the Hudson River PCBs Superfund site that calls for the targeted environmental dredging of approximately 2.65 million cubic yards of PCB-contaminated sediment from a 40-mile section of the Upper Hudson River. The cleanup covers three sections of the Upper Hudson River: River Section 1 (from the former Fort Edward Dam to the Thompson Island Dam); River Section 2 (from the Thompson Island Dam to the Northumberland Dam); and River Section 3 (from Northumberland Dam to the Federal Dam at Troy). Within the River Sections, dredging is conducted in areas of approximately 5 acres each called Certification units "CUs". Dredge areas are depicted by year in the maps on the following pages of this factsheet.



For More Information

For more information, visit*, call toll-free, or write to the Hudson River Field Office at the address below. More information about the Hudson River PCBs Superfund site is also available online: www.epa.gov/hudson.

EPA Contacts:

✦ Gary Klawinski, *Project Director*

✦ Larisa Romanowski, *Community Involvement Coordinator*

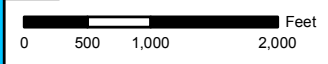
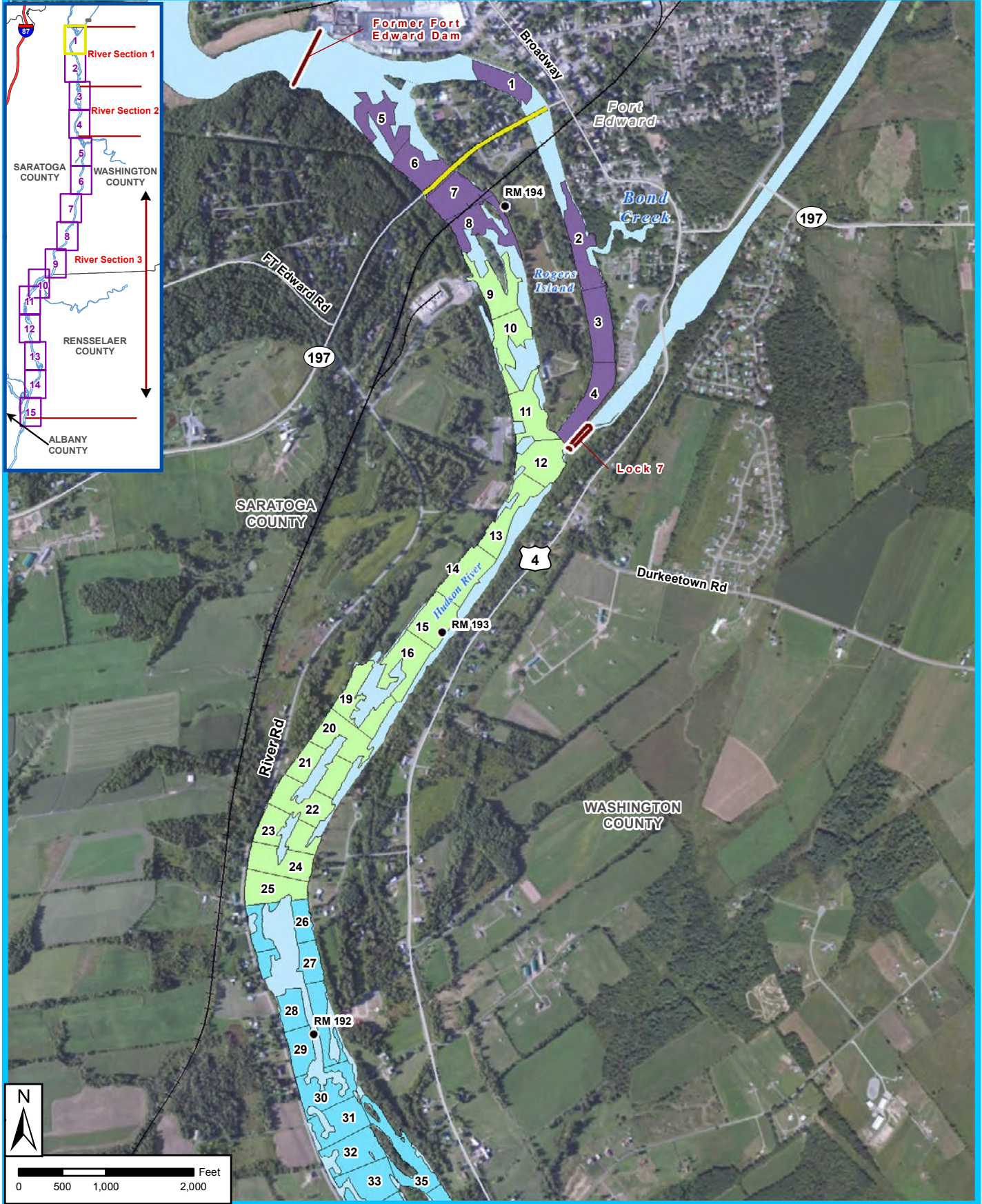
Hudson River Field Office
187 Wolf Road, Suite 303
Albany, NY 12205
(518) 407-0400 or (866) 615-6490 Toll-Free
EPAHRFO@outlook.com

*The Field Office hours are Monday - Friday, 8:00 am - 4:30 pm, with evening hours by appointment.

River residents with specific concerns relating to dredging activities when work is being performed should call GE's dedicated 24-hour phone line at (518) 792-4087 or (888) 596-3655.

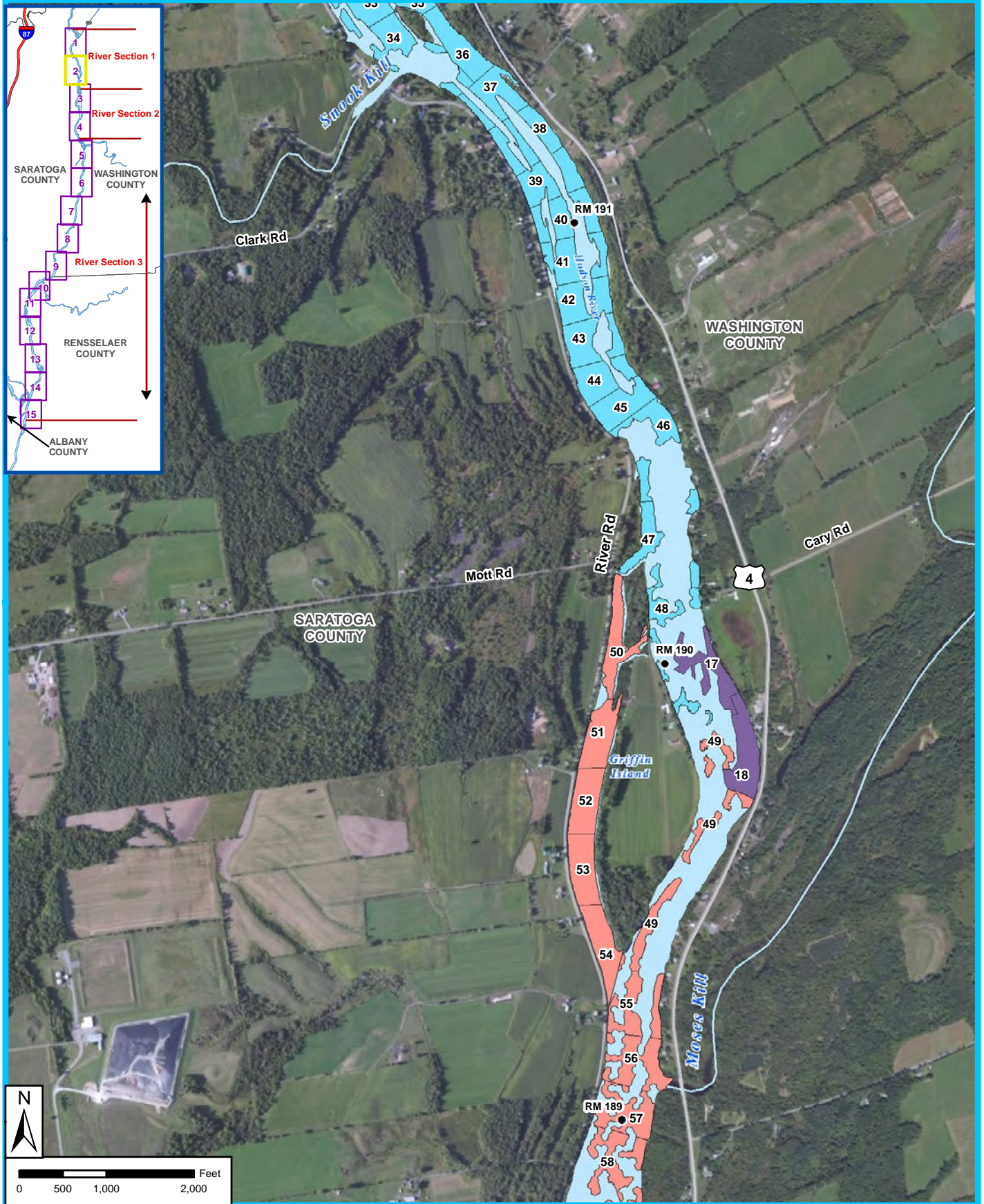
Regional Public Liaison:

If you would like information on general environmental concerns or the federal Superfund hazardous waste program, have concerns or complaints about the Superfund program, or if you seek assistance in resolving site-specific issues that were not fully addressed by the EPA, please contact: George Zachos, U.S. EPA, Regional Public Liaison, (732) 321-6621, zachos.george@epa.gov, or toll free at (888) 283-7626.



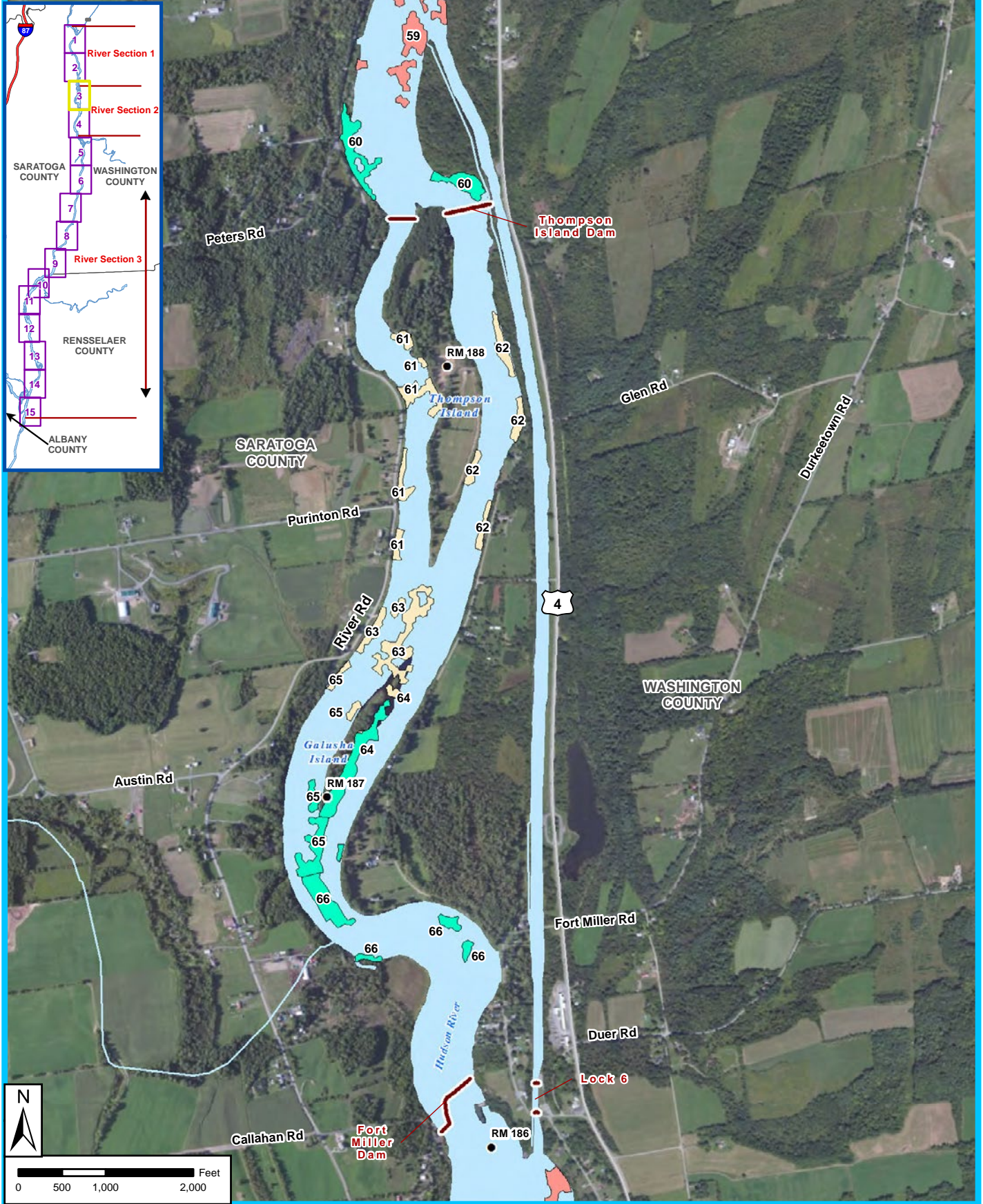
- River Mileposts
- USA Major Roads
- Bridges
- Primary Railroads
- Lock/Dam
- Stream/River
- Hudson River
- Phase 1 Dredged Areas
- Phase 2 Year 1 (2011) Dredged Areas
- Phase 2 Year 2 (2012) Dredged Areas
- Phase 2 Year 3 (2013) Dredged Areas
- Phase 2 Year 4 (2014) Dredged Areas
- Phase 2 Year 5 (2015) Dredging Areas

Phase 1 and 2 Dredge Areas
Map 1



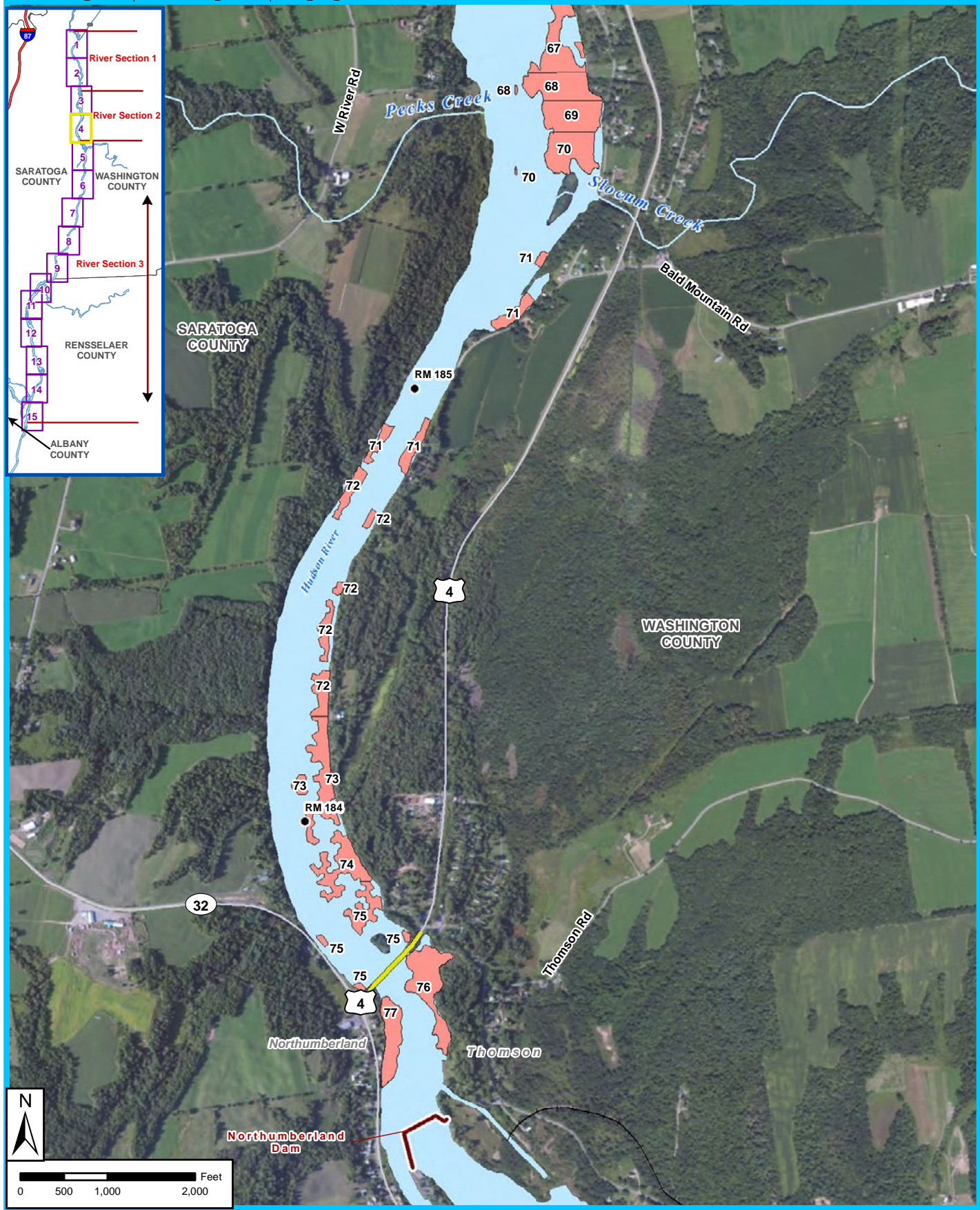
- River Mileposts
- USA Major Roads
- Bridges
- Primary Railroads
- Lock/Dam
- Stream/River
- Hudson River
- Phase 1 Dredged Areas
- Phase 2 Year 1 (2011) Dredged Areas
- Phase 2 Year 2 (2012) Dredged Areas
- Phase 2 Year 3 (2013) Dredged Areas
- Phase 2 Year 4 (2014) Dredged Areas
- Phase 2 Year 5 (2015) Dredging Areas

Phase 1 and 2 Dredge Areas
Map 2



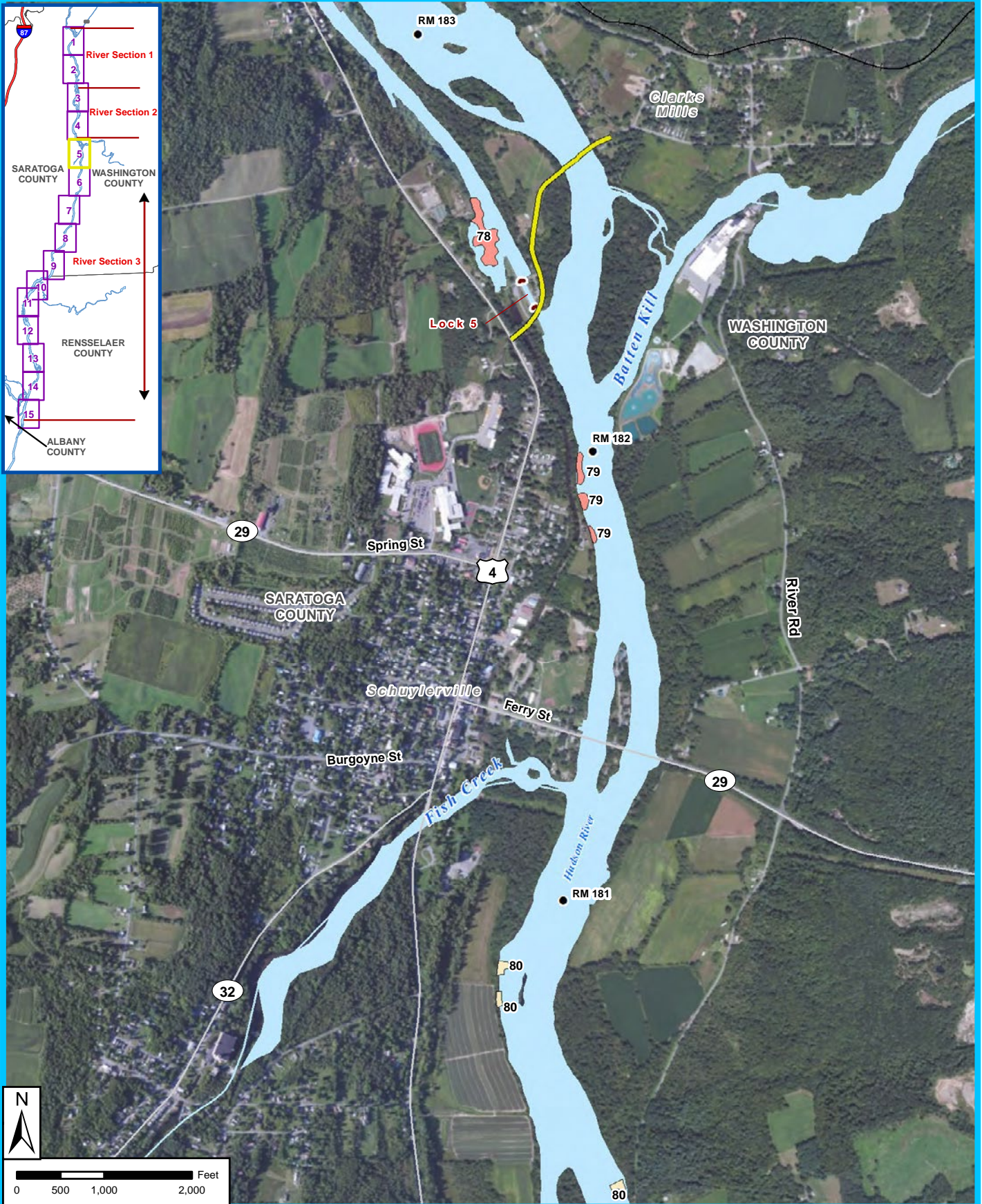
- River Mileposts
- USA Major Roads
- Bridges
- Primary Railroads
- Lock/Dam
- Stream/River
- Hudson River
- Phase 1 Dredged Areas
- Phase 2 Year 1 (2011) Dredged Areas
- Phase 2 Year 2 (2012) Dredged Areas
- Phase 2 Year 3 (2013) Dredged Areas
- Phase 2 Year 4 (2014) Dredged Areas
- Phase 2 Year 5 (2015) Dredging Areas

Phase 1 and 2 Dredge Areas
Map 3



- River Mileposts
- USA Major Roads
- Bridges
- Primary Railroads
- Lock/Dam
- Stream/River
- Hudson River
- Phase 1 Dredged Areas
- Phase 2 Year 1 (2011) Dredged Areas
- Phase 2 Year 2 (2012) Dredged Areas
- Phase 2 Year 3 (2013) Dredged Areas
- Phase 2 Year 4 (2014) Dredged Areas
- Phase 2 Year 5 (2015) Dredging Areas

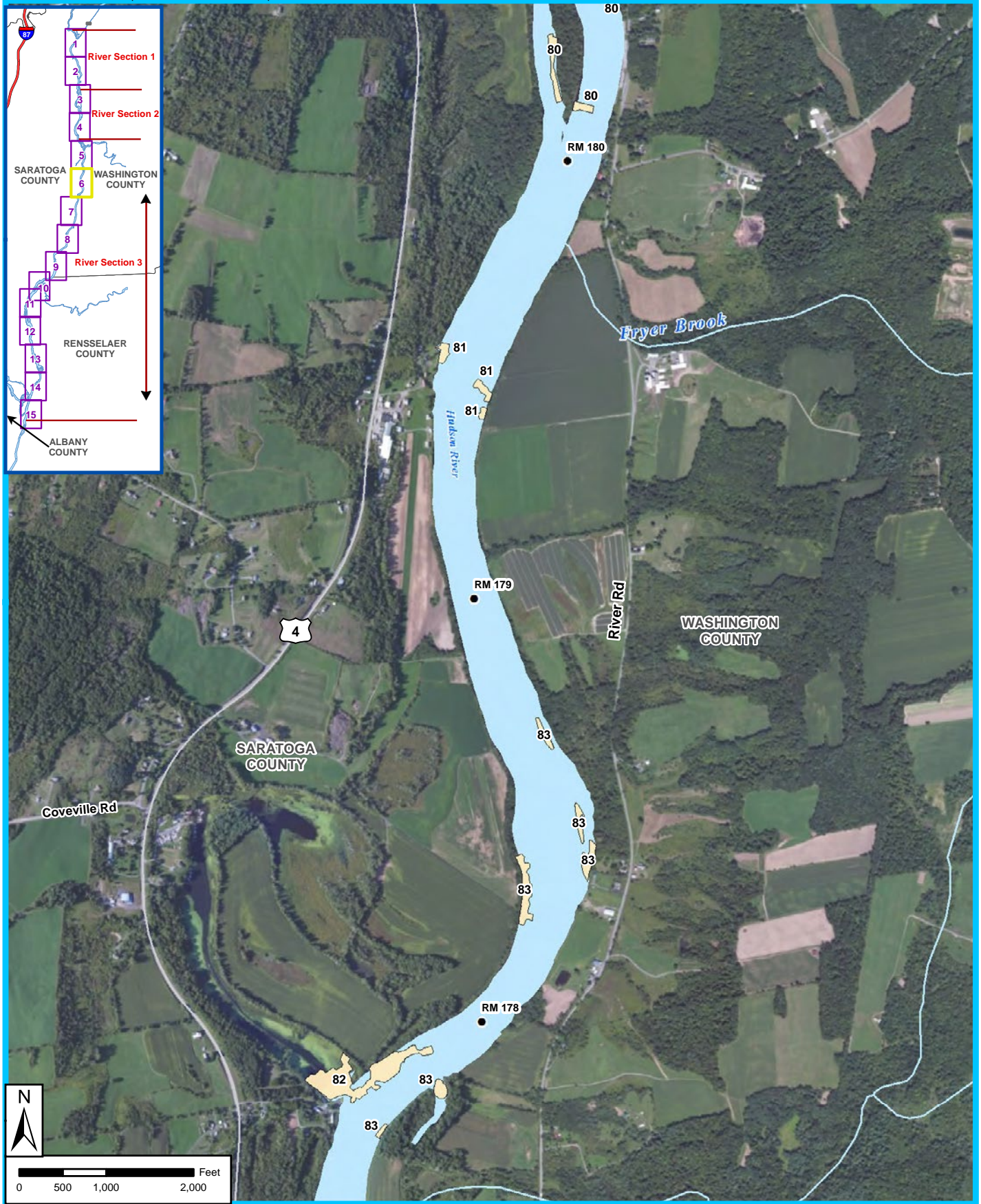
Phase 1 and 2 Dredge Areas
Map 4



Phase 1 and 2 Dredge Areas
Map 5

- River Mileposts
- USA Major Roads
- Bridges
- Primary Railroads
- Lock/Dam
- Stream/River
- Hudson River
- Phase 1 Dredged Areas
- Phase 2 Year 1 (2011) Dredged Areas
- Phase 2 Year 2 (2012) Dredged Areas
- Phase 2 Year 3 (2013) Dredged Areas
- Phase 2 Year 4 (2014) Dredged Areas
- Phase 2 Year 5 (2015) Dredging Areas

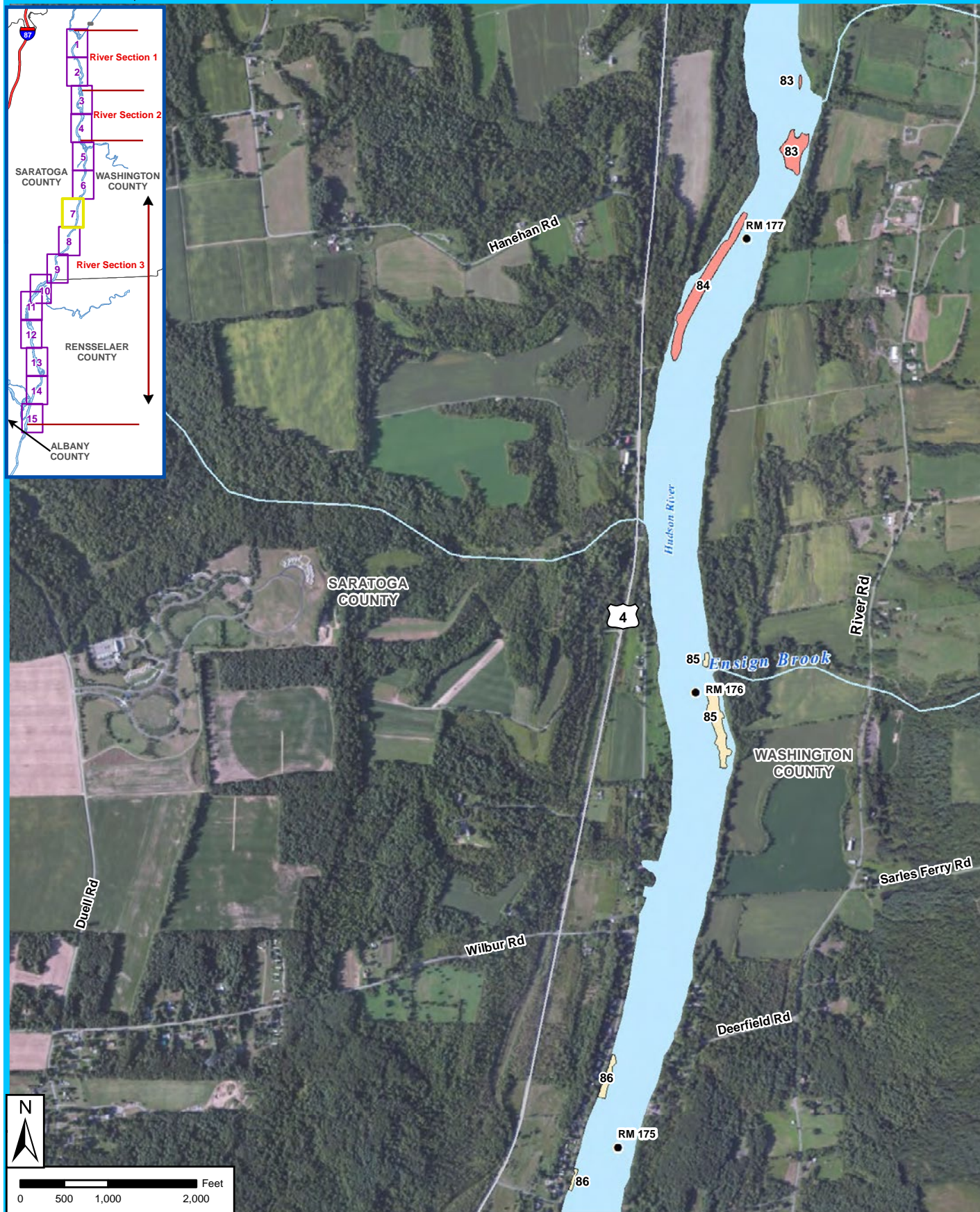




- River Mileposts
- USA Major Roads
- Bridges
- Primary Railroads
- Lock/Dam
- Stream/River
- Hudson River
- Phase 1 Dredged Areas
- Phase 2 Year 1 (2011) Dredged Areas
- Phase 2 Year 2 (2012) Dredged Areas
- Phase 2 Year 3 (2013) Dredged Areas
- Phase 2 Year 4 (2014) Dredged Areas
- Phase 2 Year 5 (2015) Dredging Areas

Phase 1 and 2 Dredge Areas
Map 6

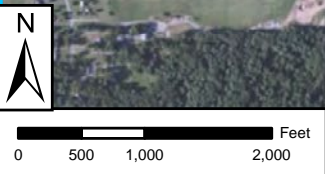


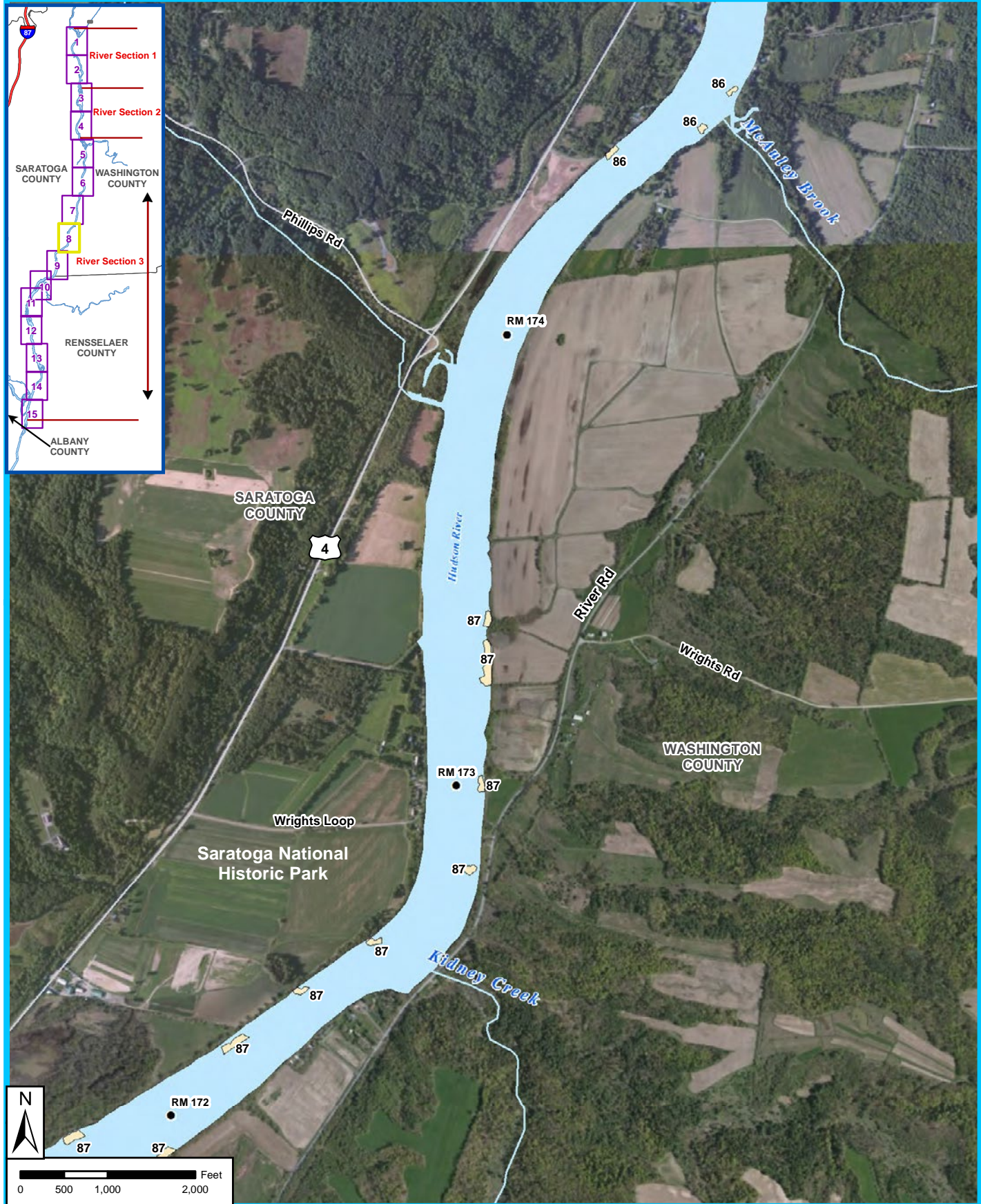


Phase 1 and 2 Dredge Areas
Map 7



- River Mileposts
- USA Major Roads
- Bridges
- Primary Railroads
- Lock/Dam
- Stream/River
- Hudson River
- Phase 1 Dredged Areas
- Phase 2 Year 1 (2011) Dredged Areas
- Phase 2 Year 2 (2012) Dredged Areas
- Phase 2 Year 3 (2013) Dredged Areas
- Phase 2 Year 4 (2014) Dredged Areas
- Phase 2 Year 5 (2015) Dredging Areas

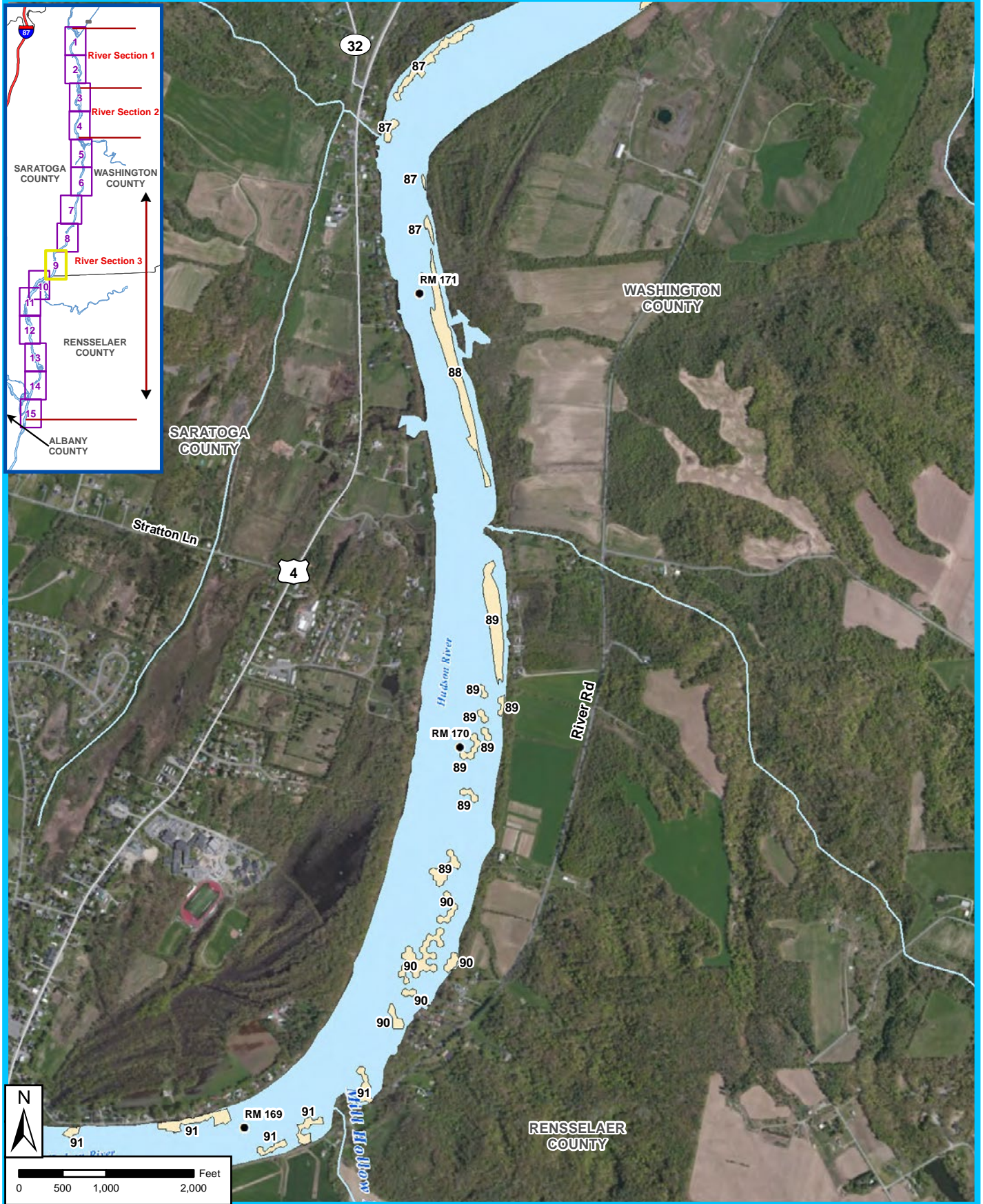




Phase 1 and 2 Dredge Areas
Map 8

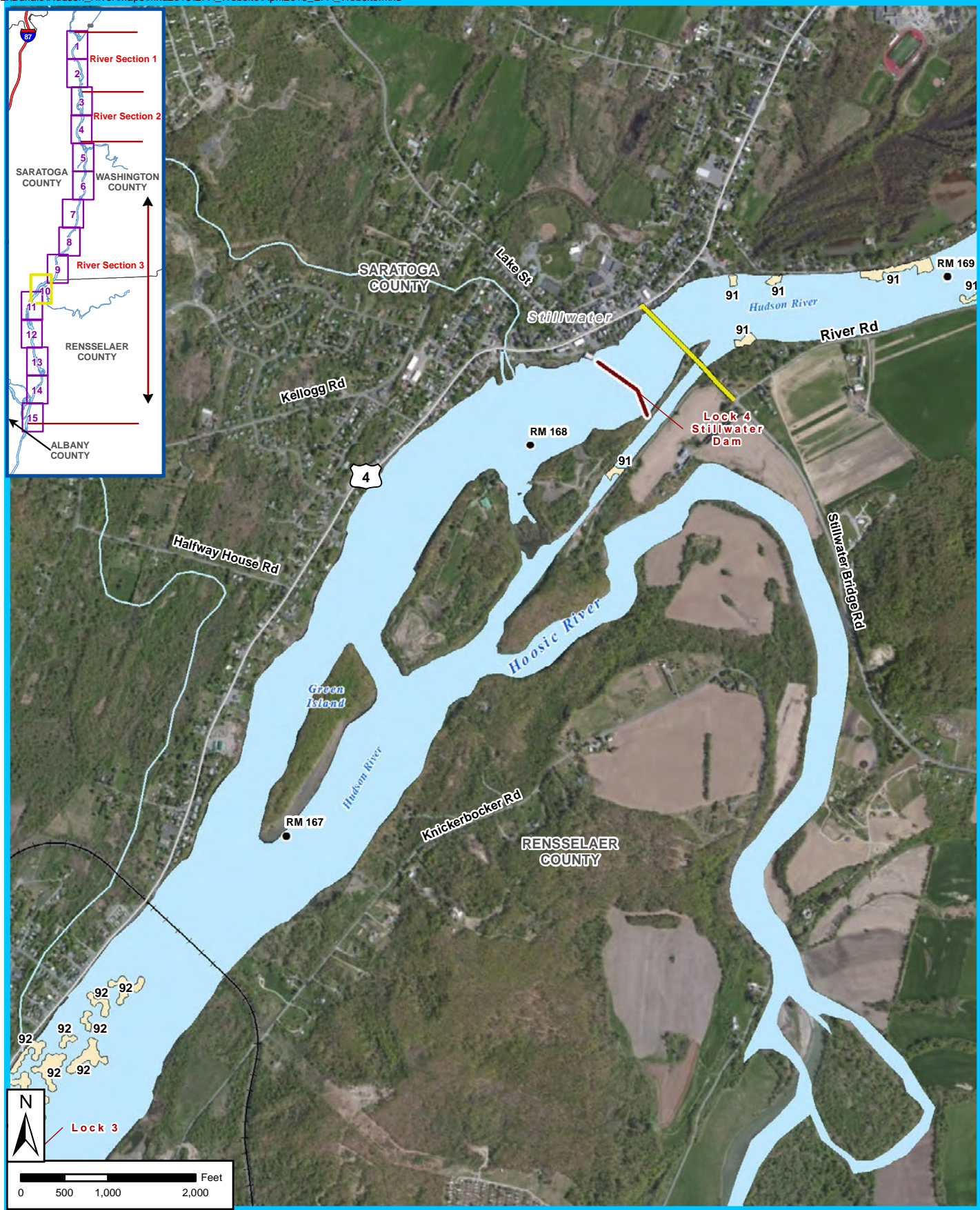
- River Mileposts
- USA Major Roads
- Bridges
- Primary Railroads
- Lock/Dam
- Stream/River
- Hudson River
- Phase 1 Dredged Areas
- Phase 2 Year 1 (2011) Dredged Areas
- Phase 2 Year 2 (2012) Dredged Areas
- Phase 2 Year 3 (2013) Dredged Areas
- Phase 2 Year 4 (2014) Dredged Areas
- Phase 2 Year 5 (2015) Dredging Areas





Phase 1 and 2 Dredge Areas
Map 9

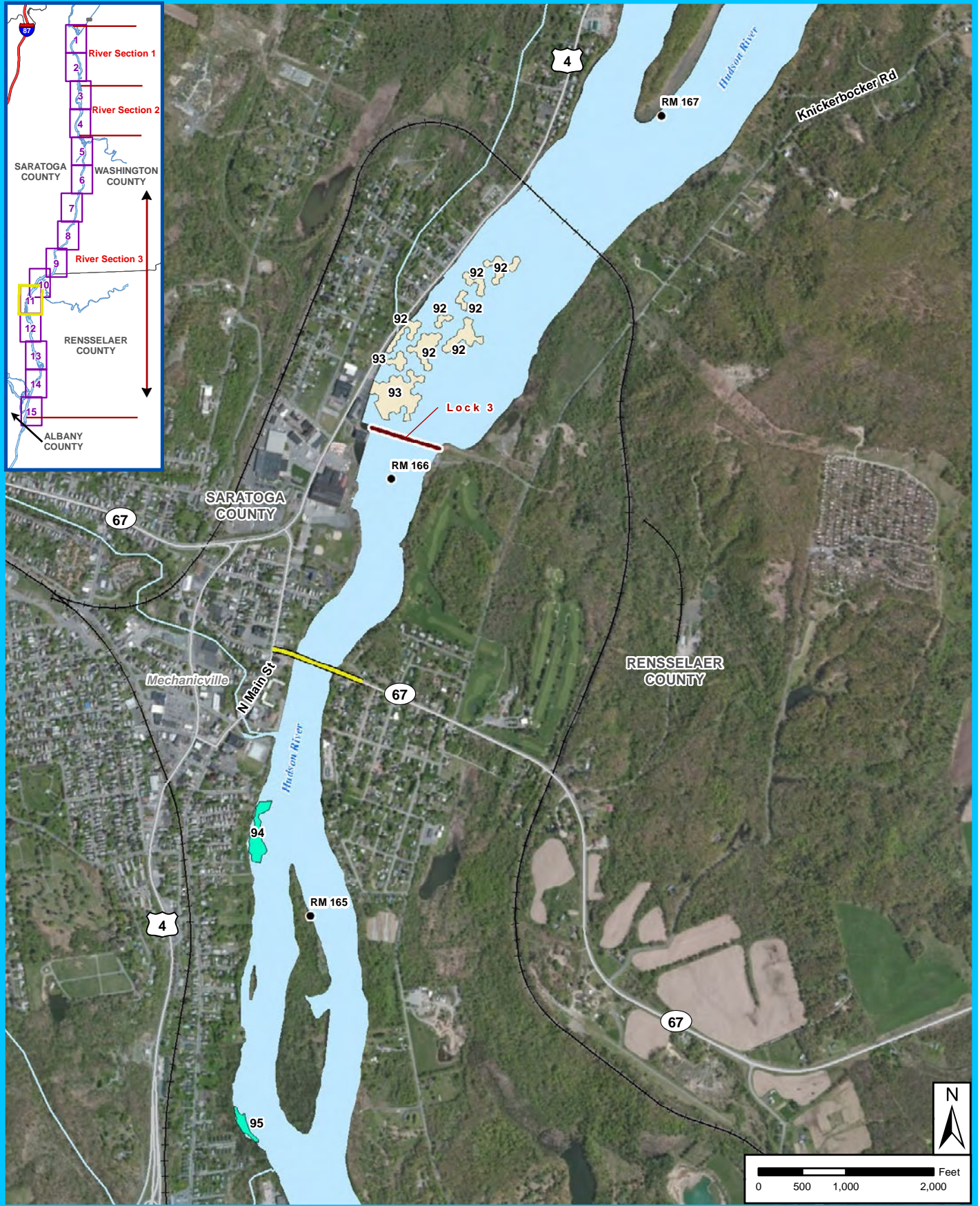
- River Mileposts
- USA Major Roads
- Bridges
- Primary Railroads
- Lock/Dam
- Stream/River
- Hudson River
- Phase 1 Dredged Areas
- Phase 2 Year 1 (2011) Dredged Areas
- Phase 2 Year 2 (2012) Dredged Areas
- Phase 2 Year 3 (2013) Dredged Areas
- Phase 2 Year 4 (2014) Dredged Areas
- Phase 2 Year 5 (2015) Dredging Areas



Phase 1 and 2 Dredge Areas
Map 10

- River Mileposts
- USA Major Roads
- Bridges
- Primary Railroads
- Lock/Dam
- Stream/River
- Hudson River
- Phase 1 Dredged Areas
- Phase 2 Year 1 (2011) Dredged Areas
- Phase 2 Year 2 (2012) Dredged Areas
- Phase 2 Year 3 (2013) Dredged Areas
- Phase 2 Year 4 (2014) Dredged Areas
- Phase 2 Year 5 (2015) Dredging Areas

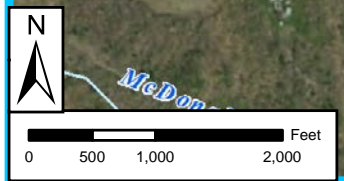
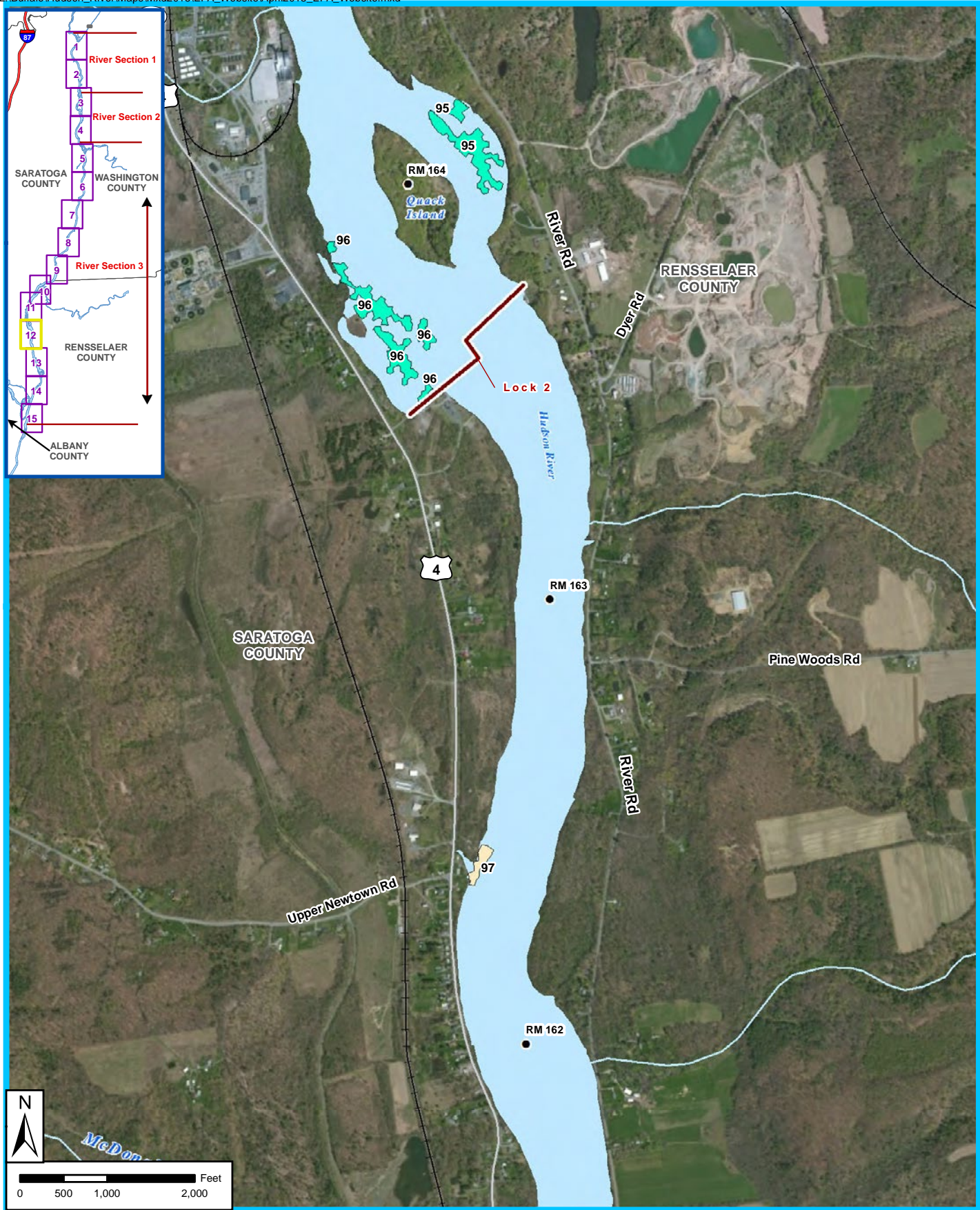




- River Mileposts
- Bridges
- USA Major Roads
- Primary Railroads
- Lock/Dam
- Hudson River
- Stream/River
- Phase 1 Dredged Areas
- Phase 2 Year 1 (2011) Dredged Areas
- Phase 2 Year 2 (2012) Dredged Areas
- Phase 2 Year 3 (2013) Dredged Areas
- Phase 2 Year 4 (2014) Dredged Areas
- Phase 2 Year 5 (2015) Dredging Areas

Phase 1 and 2 Dredge Areas
Map11

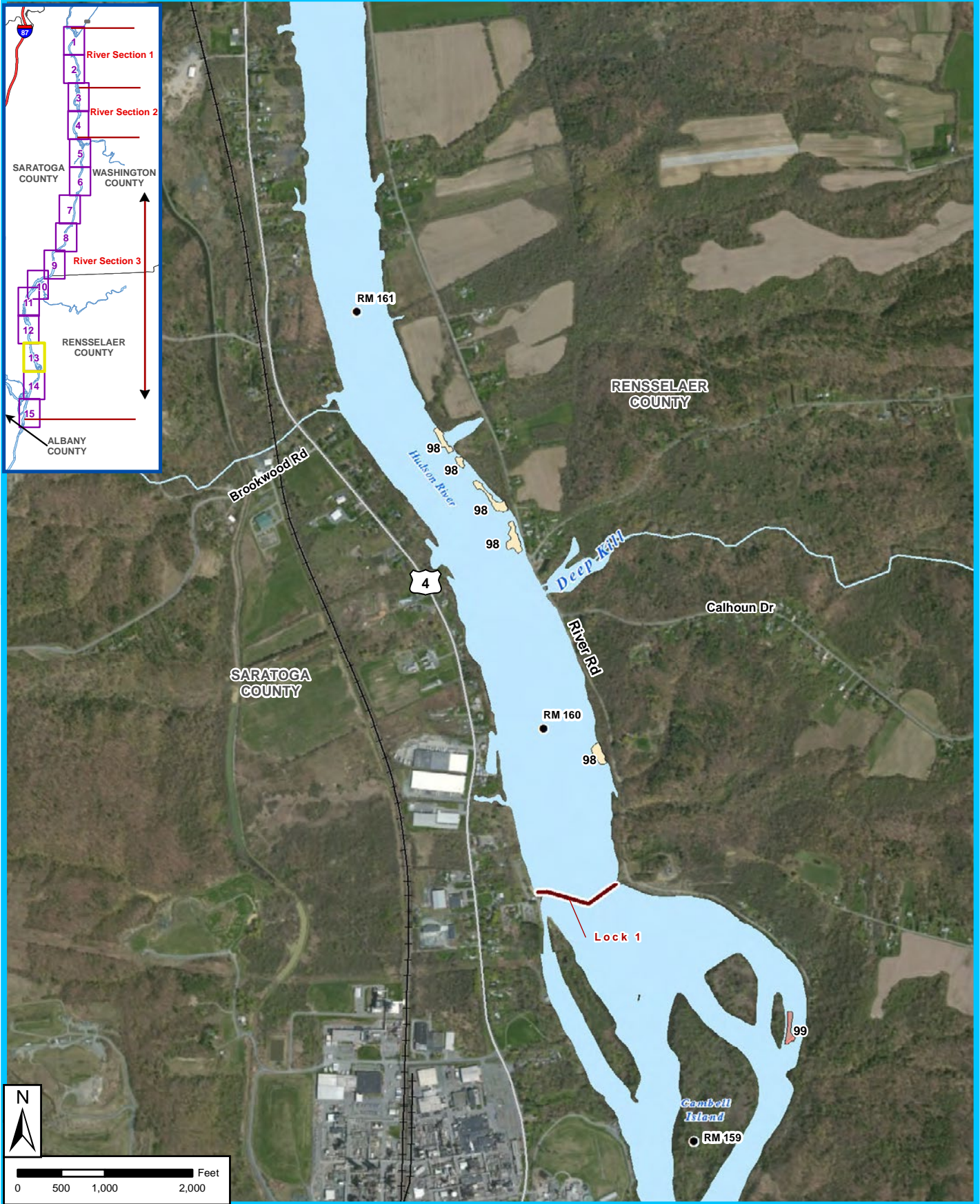




- River Mileposts
- USA Major Roads
- Bridges
- Primary Railroads
- Lock/Dam
- Stream/River
- Hudson River
- Phase 1 Dredged Areas
- Phase 2 Year 1 (2011) Dredged Areas
- Phase 2 Year 2 (2012) Dredged Areas
- Phase 2 Year 3 (2013) Dredged Areas
- Phase 2 Year 4 (2014) Dredged Areas
- Phase 2 Year 5 (2015) Dredging Areas

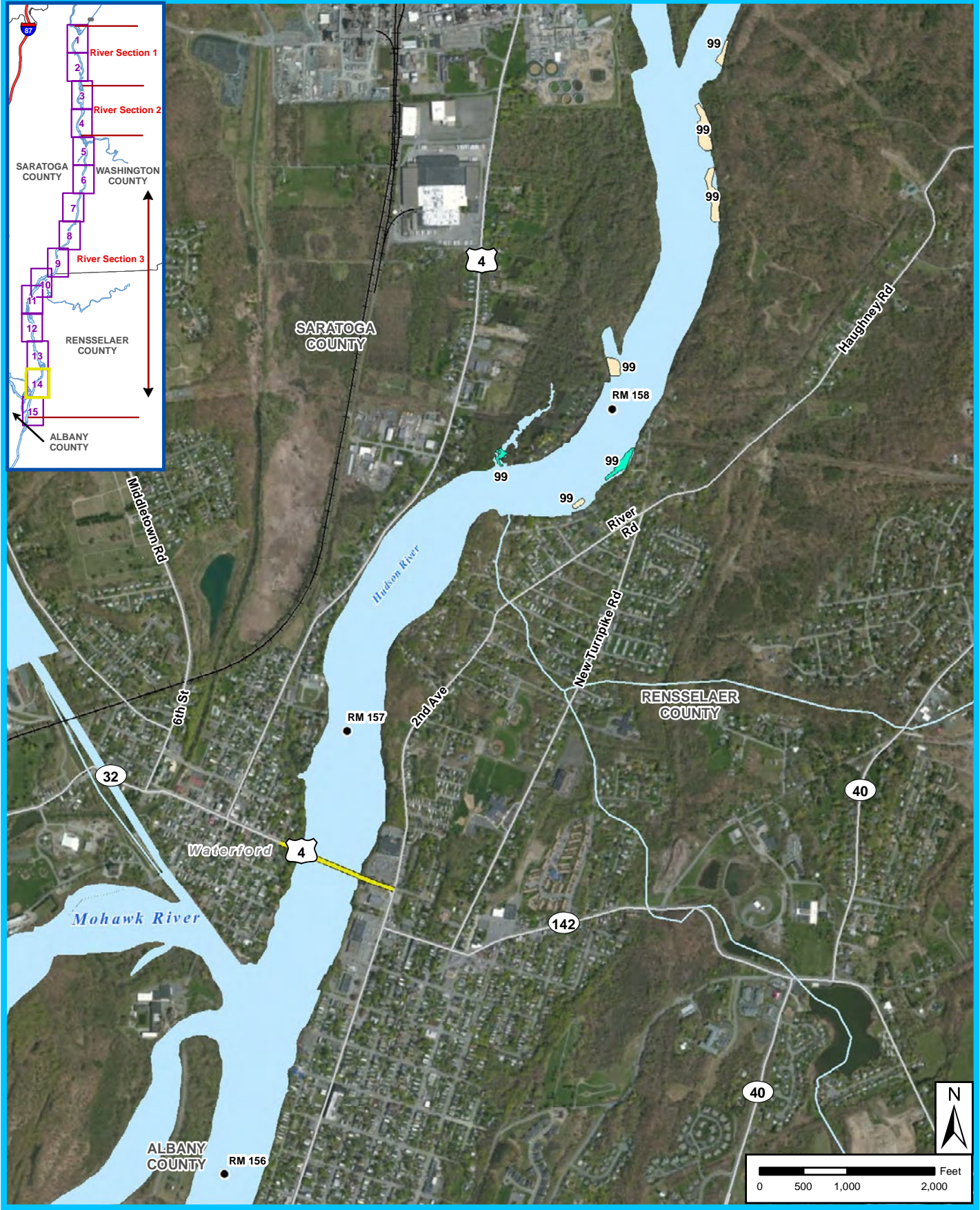
Phase 1 and 2 Dredge Areas
Map 12





- River Mileposts
- USA Major Roads
- Bridges
- Primary Railroads
- Lock/Dam
- Stream/River
- Hudson River
- Phase 1 Dredged Areas
- Phase 2 Year 1 (2011) Dredged Areas
- Phase 2 Year 2 (2012) Dredged Areas
- Phase 2 Year 3 (2013) Dredged Areas
- Phase 2 Year 4 (2014) Dredged Areas
- Phase 2 Year 5 (2015) Dredging Areas

Phase 1 and 2 Dredge Areas
Map 13



Phase 1 and 2 Dredge Areas
Map 14

- River Mileposts
- USA Major Roads
- Bridges
- Primary Railroads
- Lock/Dam
- Hudson River
- Stream/River
- Phase 1 Dredged Areas
- Phase 2 Year 1 (2011) Dredged Areas
- Phase 2 Year 2 (2012) Dredged Areas
- Phase 2 Year 3 (2013) Dredged Areas
- Phase 2 Year 4 (2014) Dredging Areas
- Phase 2 Year 5 (2015) Dredging Areas





- River Mileposts
- USA Major Roads
- Bridges
- Primary Railroads
- Lock/Dam
- Hudson River
- Stream/River
- Phase 1 Dredged Areas
- Phase 2 Year 1 (2011) Dredged Areas
- Phase 2 Year 2 (2012) Dredged Areas
- Phase 2 Year 3 (2013) Dredged Areas
- Phase 2 Year 4 (2014) Dredged Areas
- Phase 2 Year 5 (2015) Dredging Areas

**Phase 1 and 2 Dredge Areas
Map 15**