

Manufacturer: MeadWestvaco (MWV): Healthcare Packaging
Model: Dosepak Express
ASTM Type: XIII A

Description:

This is a semi-rigid blister reclosable package. This package consists of paperboard outer carton containing a blister card (Figures 1A and 1B). Figure 1A is the paperboard outer carton with the outside flap closed. Figure 1B shows the carton with the flap opened.

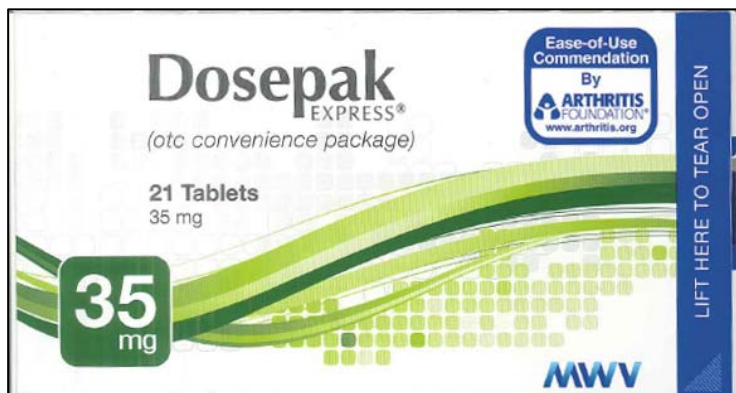


Figure 1A



Figure 1B

The front of the blister card covers each tablet with a clear semi-rigid plastic film (Figure 2A) and the back of the card is foil (Figure 2B).



Figure 2 A



Figure 2 B

The package is opened by pressing a tab (indicated by the red arrow in Figure 3) on the front of the outer carton, holding it down, and pulling the exposed portion of the blister card (indicated by the blue arrow in Figure 3) to the right.

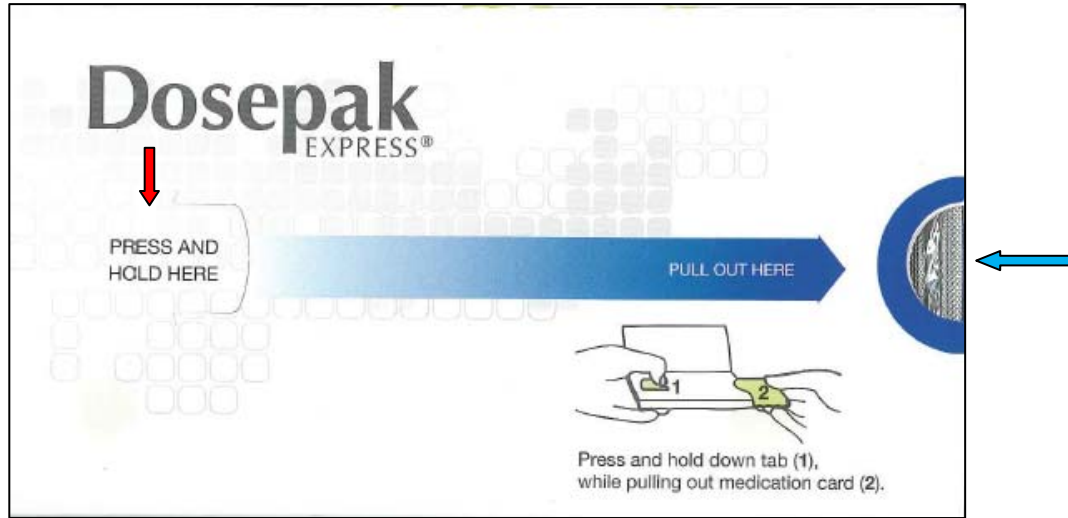


Figure 3

Once the blister card is exposed, a tablet is pushed out (indicated by the red arrow in Figure 4).

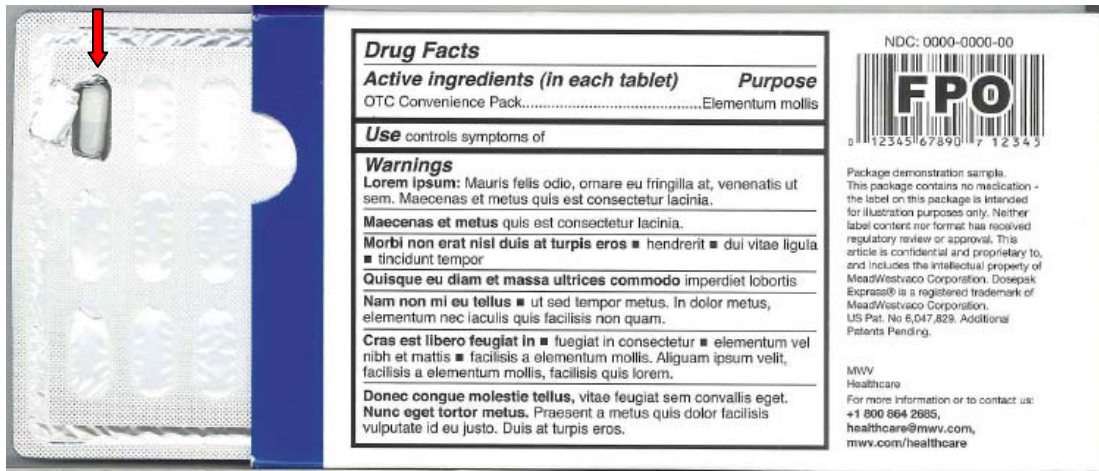
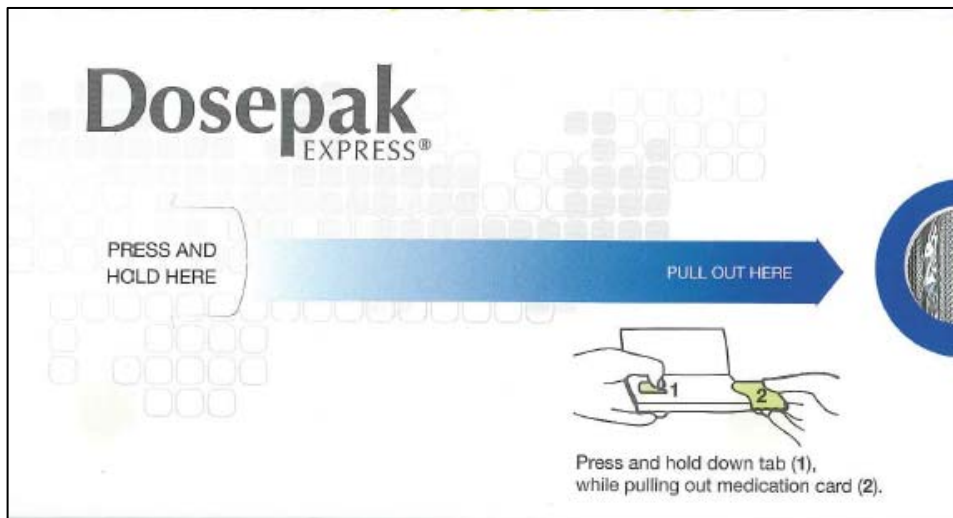


Figure 4

The manufacturer's instructions on the front of the outer carton are (Figure 5):



PRESS AND
HOLD HERE

PULL OUT HERE (inside a blue arrow pointing to the right)

A pictogram of the package being opened by pressing on the tab and holding it down while pulling the exposed portion of the blister card to the right. The wording below the pictogram says:

Press and hold down tab (1).
While pulling out medication card (2).