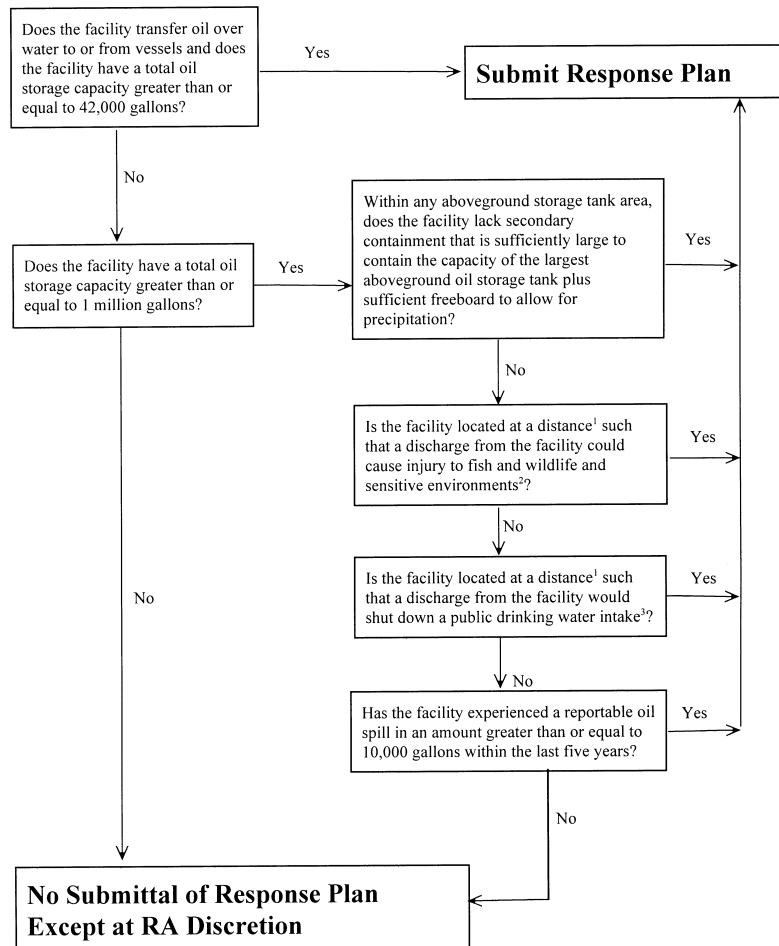


ATTACHMENTS TO APPENDIX C

Attachment C-1

Flowchart of Criteria for Substantial Harm



¹ Calculated using the appropriate formula in Attachment C-III to this appendix or a comparable formula.

² For further description of fish and wildlife and sensitive environments, see Appendices I, II, and III to DOC/NOAA's "Guidance for Facility and vessel response Plans: Fish and Wildlife and Sensitive Environments" (59 FR 14713, March 29, 1994) and the applicable Area Contingency Plan.

³ Public drinking water intakes are analogous to public water systems as described at CFR 143.2(c).