

Duwamish Valley Cumulative Health Impacts Analysis: Seattle, Washington



Linn Gould, MS, MPH
Just Health Action

TRI Conference
May 7, 2014



Today



- What is JHA?
- Where is the Duwamish Valley?
- Cumulative impacts
- Method
- Results and limitations
- How used?

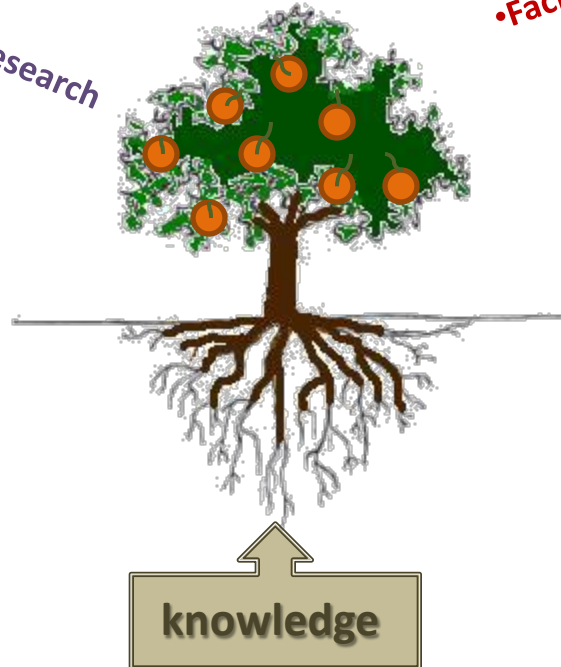
JHA: working towards health equity

- Research**
- Health Impact Assessment
 - Cumulative Health Impacts Analysis
 - Environmental Justice analyses
 - Community Based Participatory Research

tools

- Education**
- Teaching
 - Curriculum development
 - Facilitation

compass

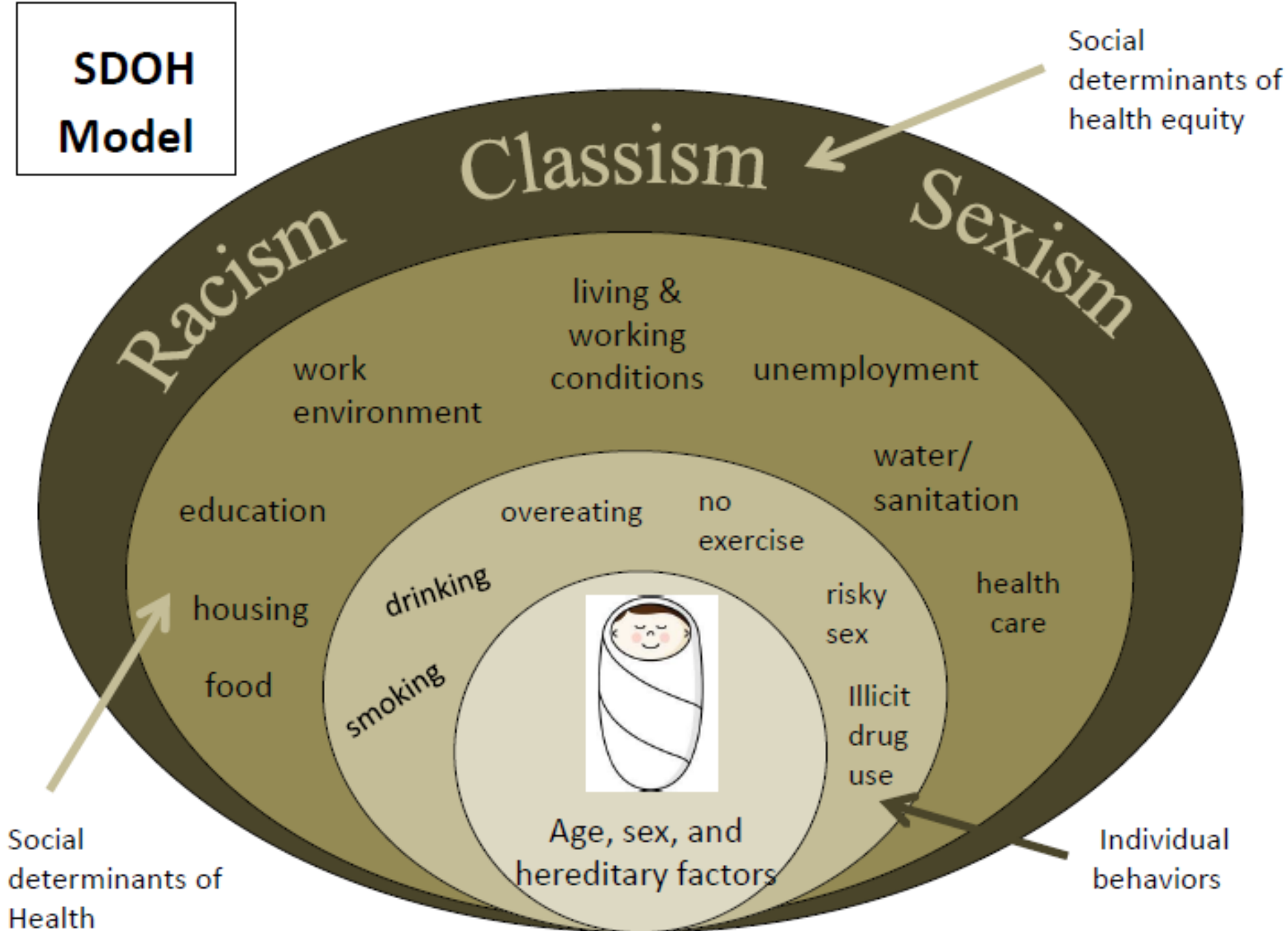


action!



knowledge

**SDOH
Model**



Seattle

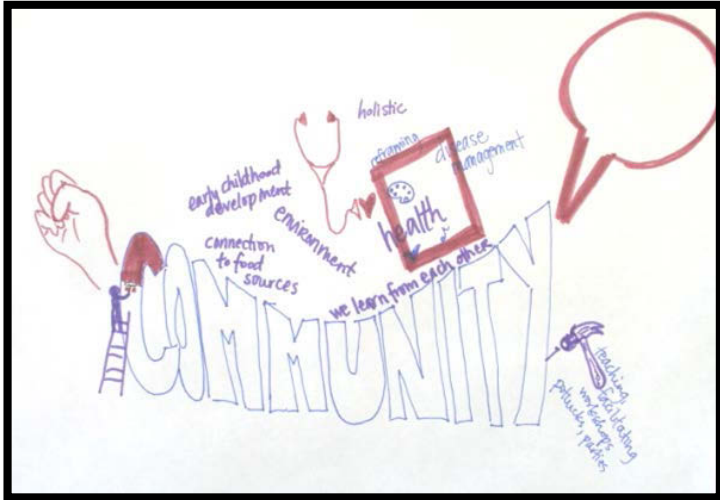
Duwamish River



Duwamish Valley contamination – soils, air, ground water, Duwamish River Superfund site



Assets too!



SP Community Center



Duwamish Valley Disparities

Indicator	Duwamish Valley	King County
Life expectancy*	79.4	81.3
% below poverty**	17.6%	9.7%
Foreign born**	31.9%	19%
No high school degree**	20.2%	8.2%
Uninsured*	20%	13%
Lung cancer*	52.3 per 100,000	41.4 per 100,000
Homicide*	10.5 per 100,000	3.4 per 100,000
Asthma hospitalization*	240.4 per 100,00	143.4 per 100,000
Assault*	70.9 per 100,00	31 per 100,00
Low birth weight*	6.0%	4.9%
No leisure time physical activity*	24%	15%

Source: Public Health Seattle & King County.

* p=.05; **p=.10

Cumulative Effects - Imagine



+



+



+



+



+++++

OR



+



+



+

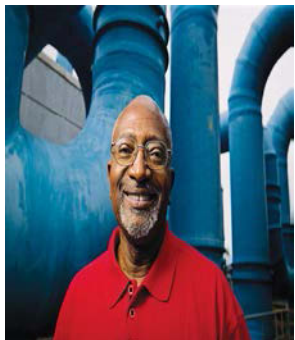
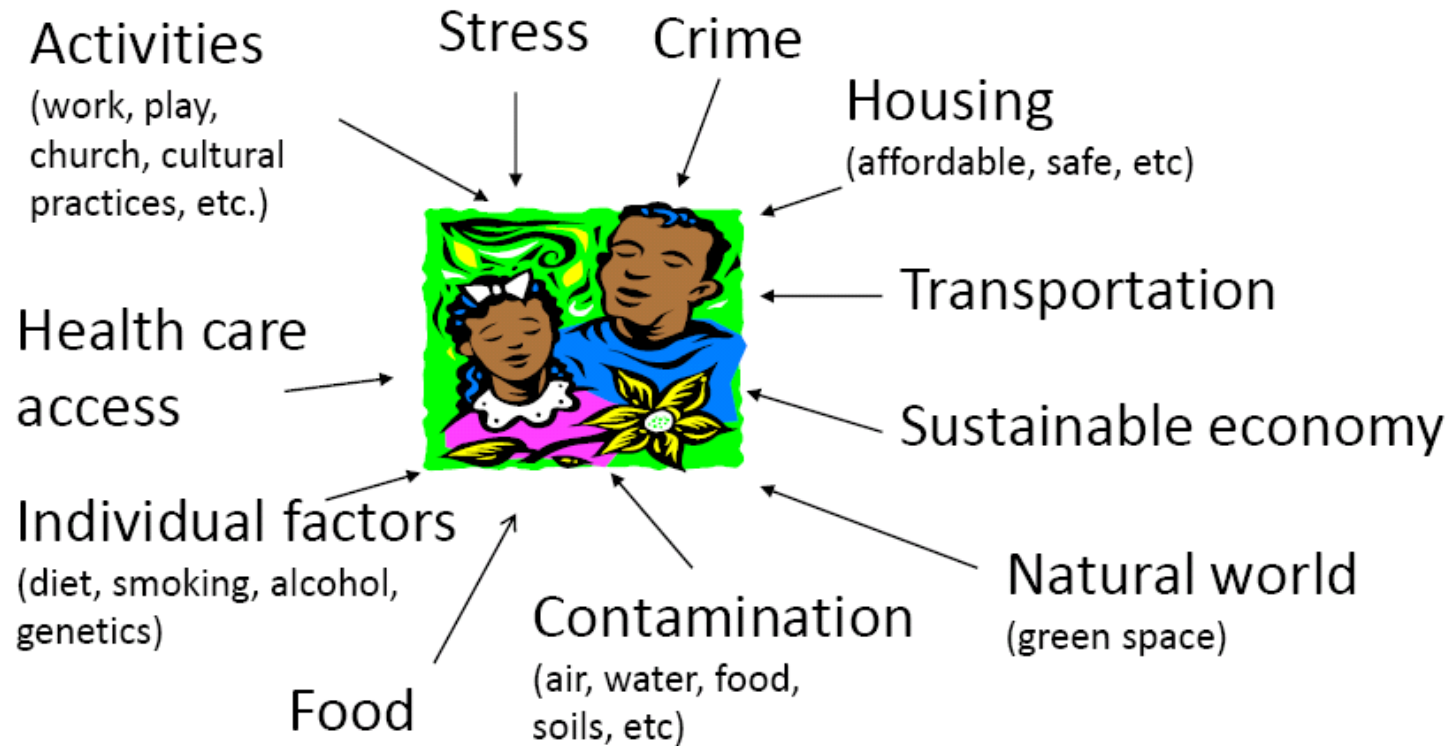


+



++++

ENVIRONMENTAL JUSTICE



“The environment is everything: where we live, work, play, go to school, as well as the physical and natural world. And so we can’t separate the physical environment from the cultural environment.”

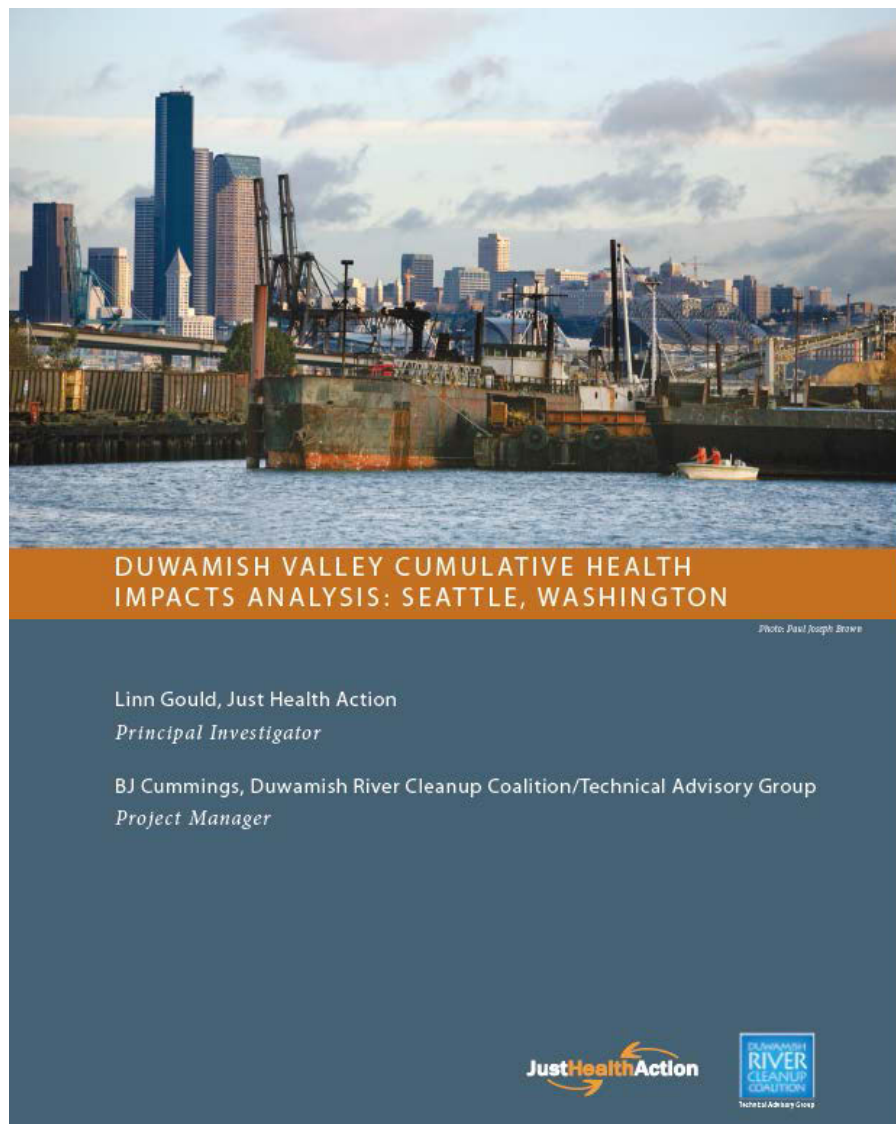
(Robert Bullard, 1999)

What does the “community” want?





EPA Environmental Justice Research Grant



1. Inform EPA's Duwamish River Superfund Site Cleanup decisions
2. Develop risk reduction strategies for communities impacted by site
3. Improve health outcomes in the affected community
4. Inform action by regional public and private agencies



Technical Advisory Group



Methodology – CAL/EPA and OEHHA

CUMULATIVE IMPACTS: BUILDING A SCIENTIFIC FOUNDATION



December 2010

Linda S. Adams, Secretary
California Environmental Protection Agency

Joan E. Denton, Ph.D., Director
Office of Environmental Health Hazard Assessment



DEFINITION:

Any exposures, public health or environmental effects from the combined emission and discharges in a geographic area, including environmental pollution from all sources, whether a single or multi-media, routinely, accidentally, or otherwise released

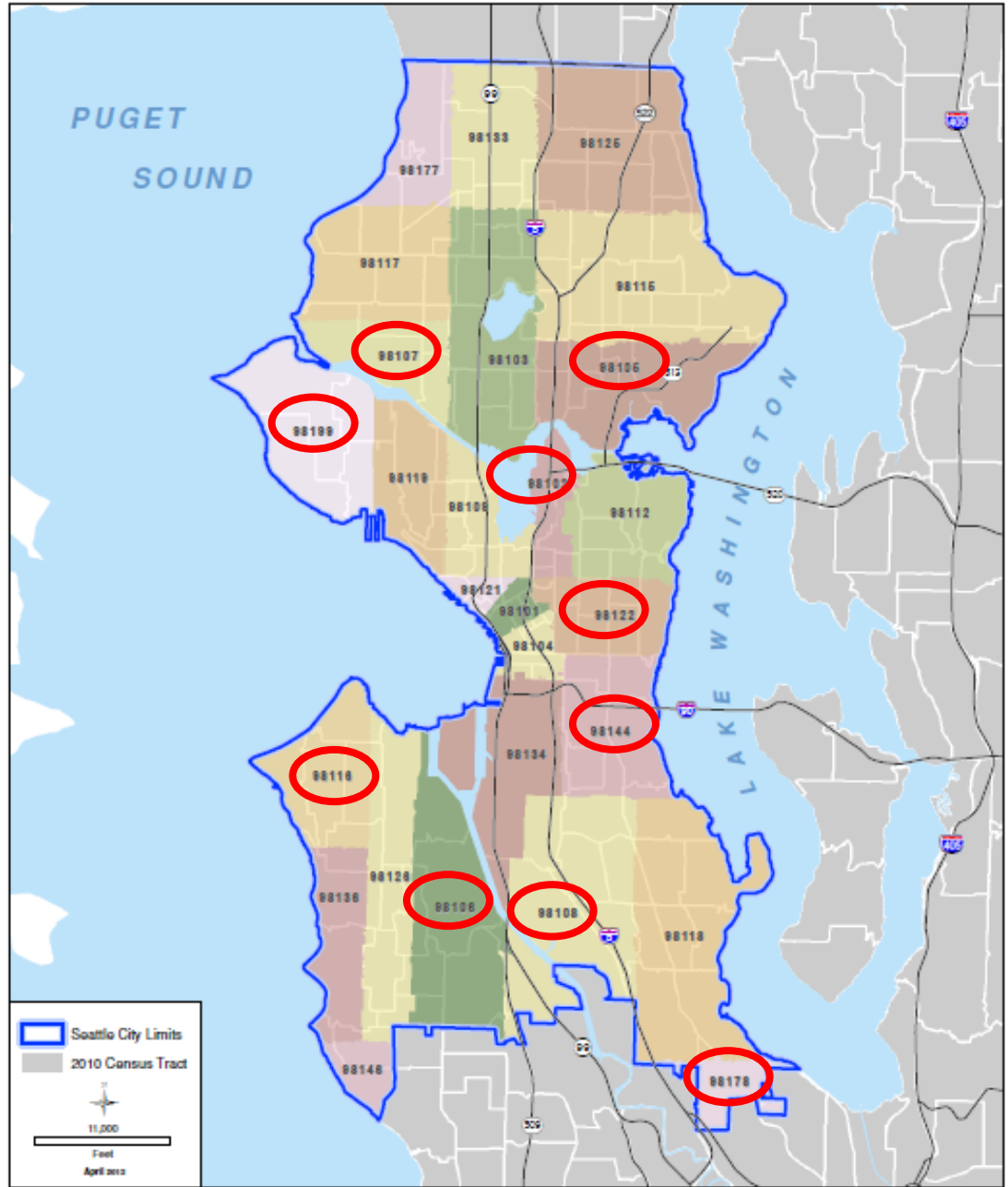
Seattle CHIA

Geographic unit of analysis – 10 ZIPs

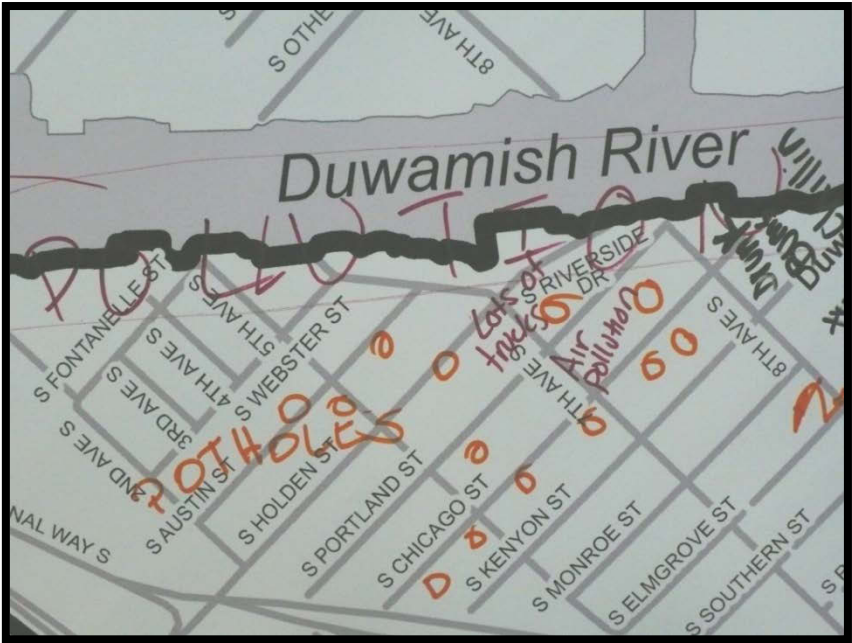
Ranges of:

- Income
- Minority
- Pollution

- CBPR



Community Based Participatory Research



CBPR: Health Mapping

Where is our
neighborhood
healthy?

Where is our
neighborhood
unhealthy?

What makes Georgetown *healthy* and *unhealthy*?



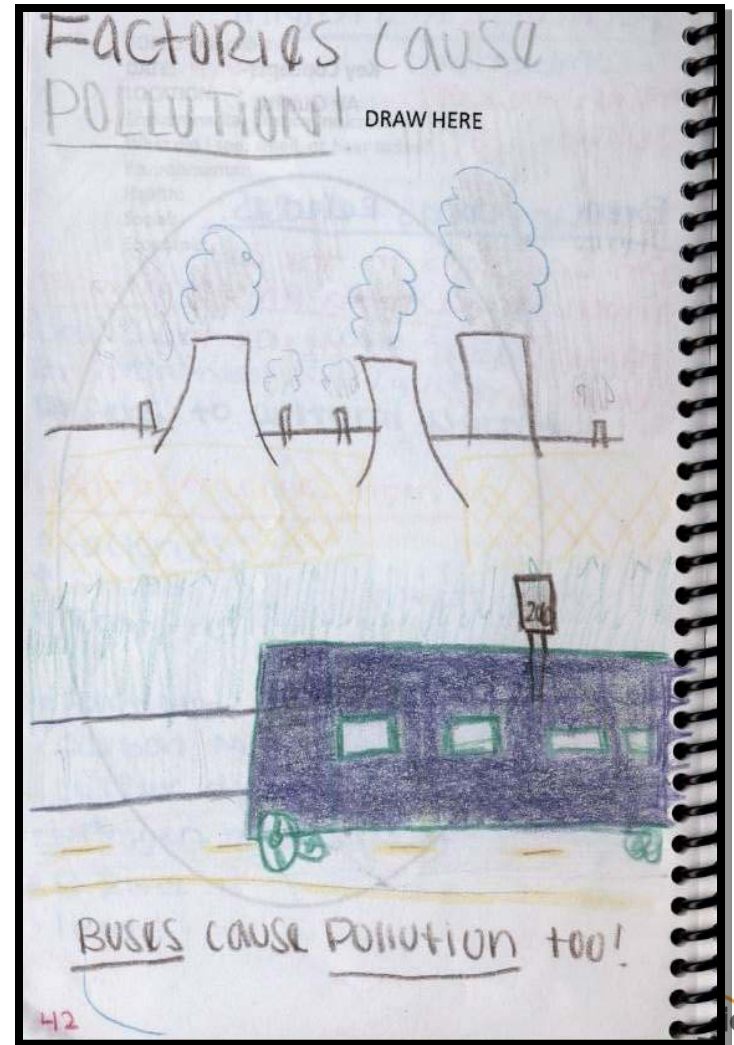
Research on 24 Indicators in 5 categories

Component	Definition
Socioeconomic factors	Community characteristics that result in increased vulnerability to pollutants
Sensitive populations	Populations with traits that may magnify the effects of pollutant exposures
Environmental exposures	Contact with pollution
Environmental effects	Adverse built environment conditions
Public health effects	Disease and other health conditions

Information sources



- The community!
- U.S. Census
- Public Health Seattle King County
- King County Department of Natural Resources
- Environmental Protection Agency TRI and C-FERST
- WA State Department of Ecology data base



CHIA: Range of scores for each component

Component	Range of Possible Scores	Map Color
Socioeconomic factors	1-3	BROWN
Sensitive populations factors	1-3	GREEN
Environmental exposures factors	1-10	BLUE
Environmental effects factors	1-5	PURPLE
Public Health effects factors	1-5	PINK
Cumulative Impact Score	6-120	ORANGE

Source: Cal/ EPA Cumulative Impacts: Building a Scientific Foundation

Figure 3. Percent Below 200% Poverty Level, by ZIP Code
Seattle, Washington, 5-year Average 2006-2010

**Socioeconomic factor
component (rank 1-3):
Percent Below 200%
Poverty Level by
ZIP code**

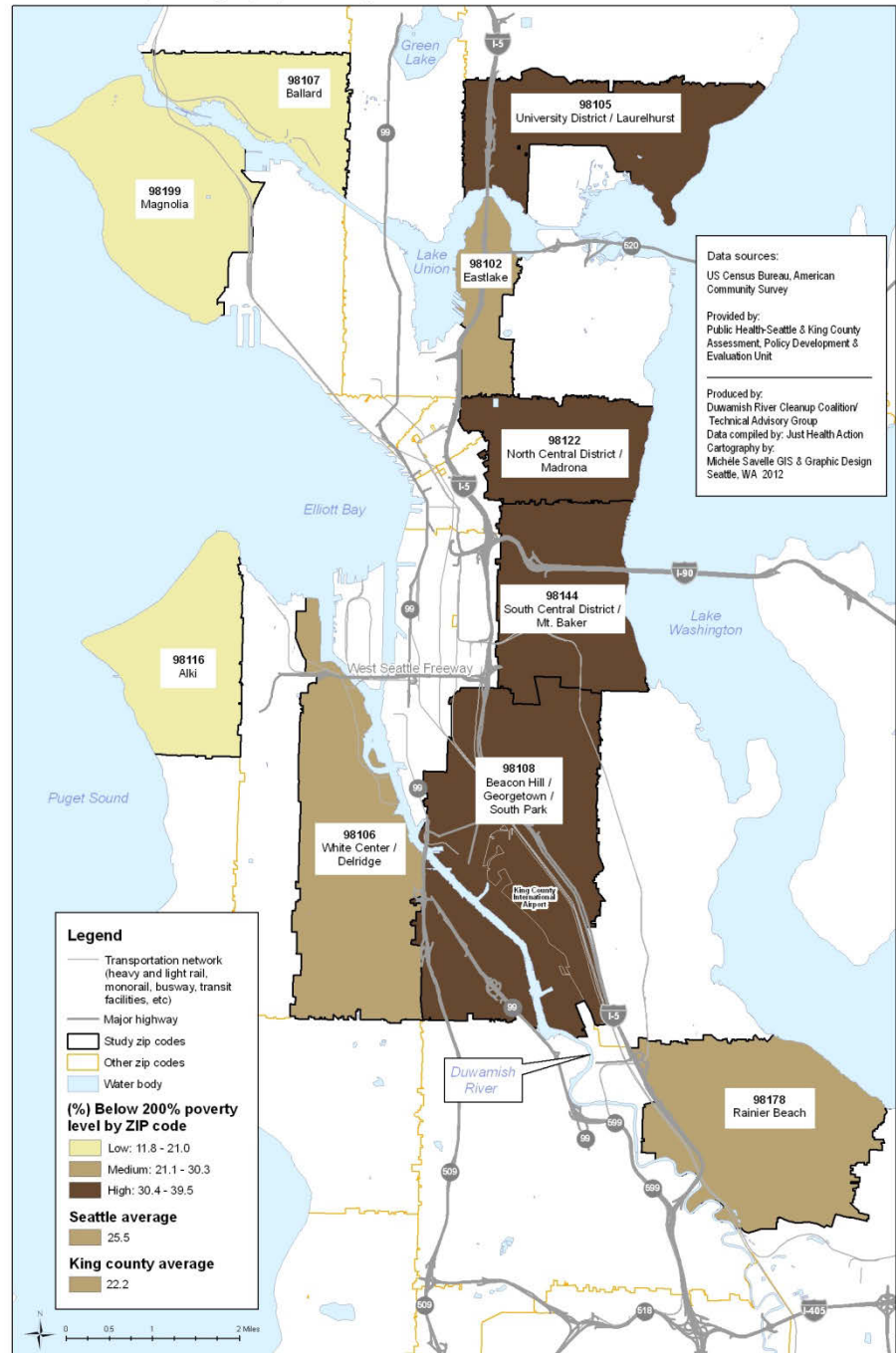


Figure 7. Percent Foreign-Born by ZIP Code
Seattle, Washington, 5-year Average 2006-2010

**Sensitive populations
component (rank 1-3):
Percent Foreign Born
by
ZIP code**

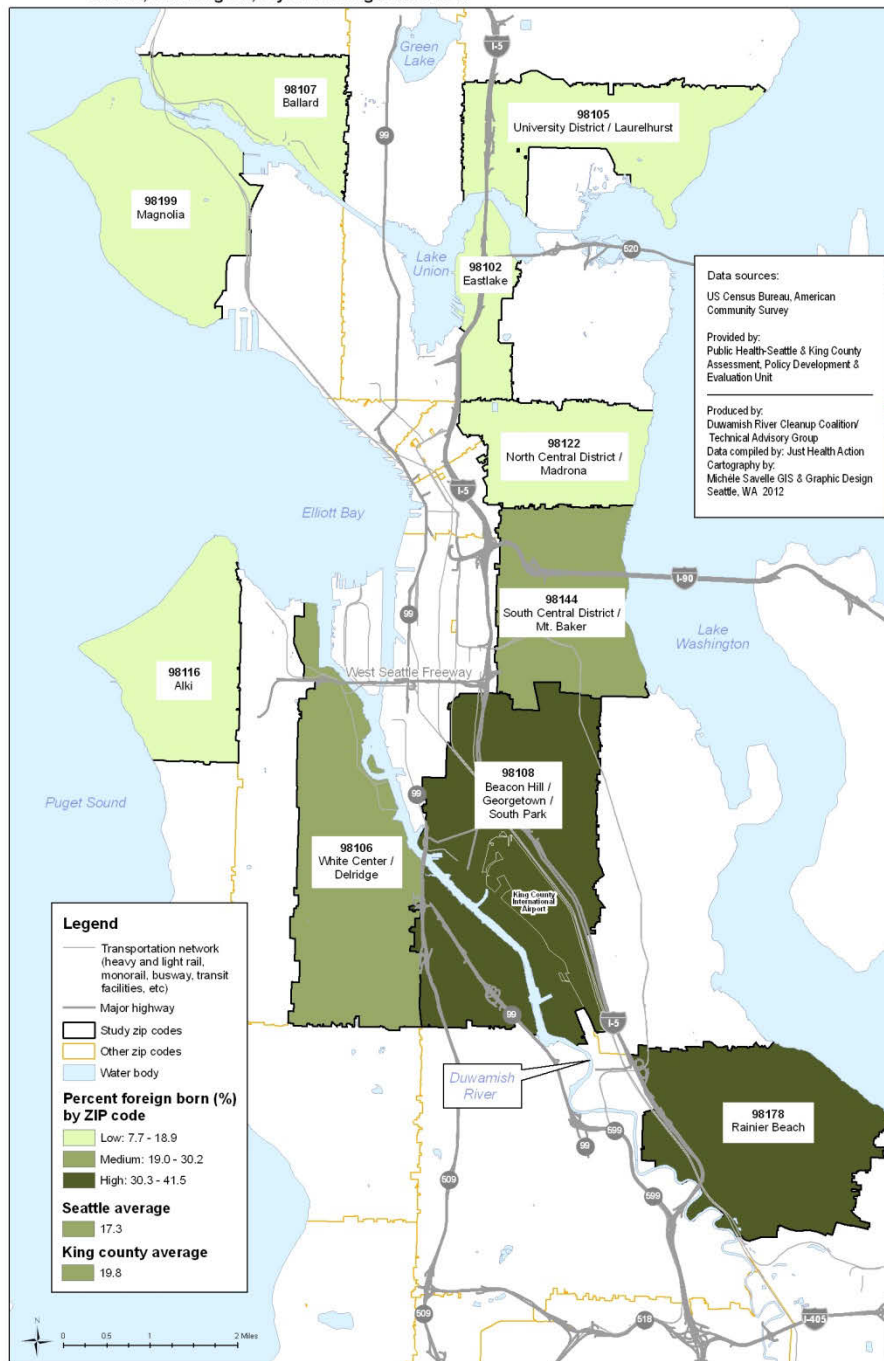
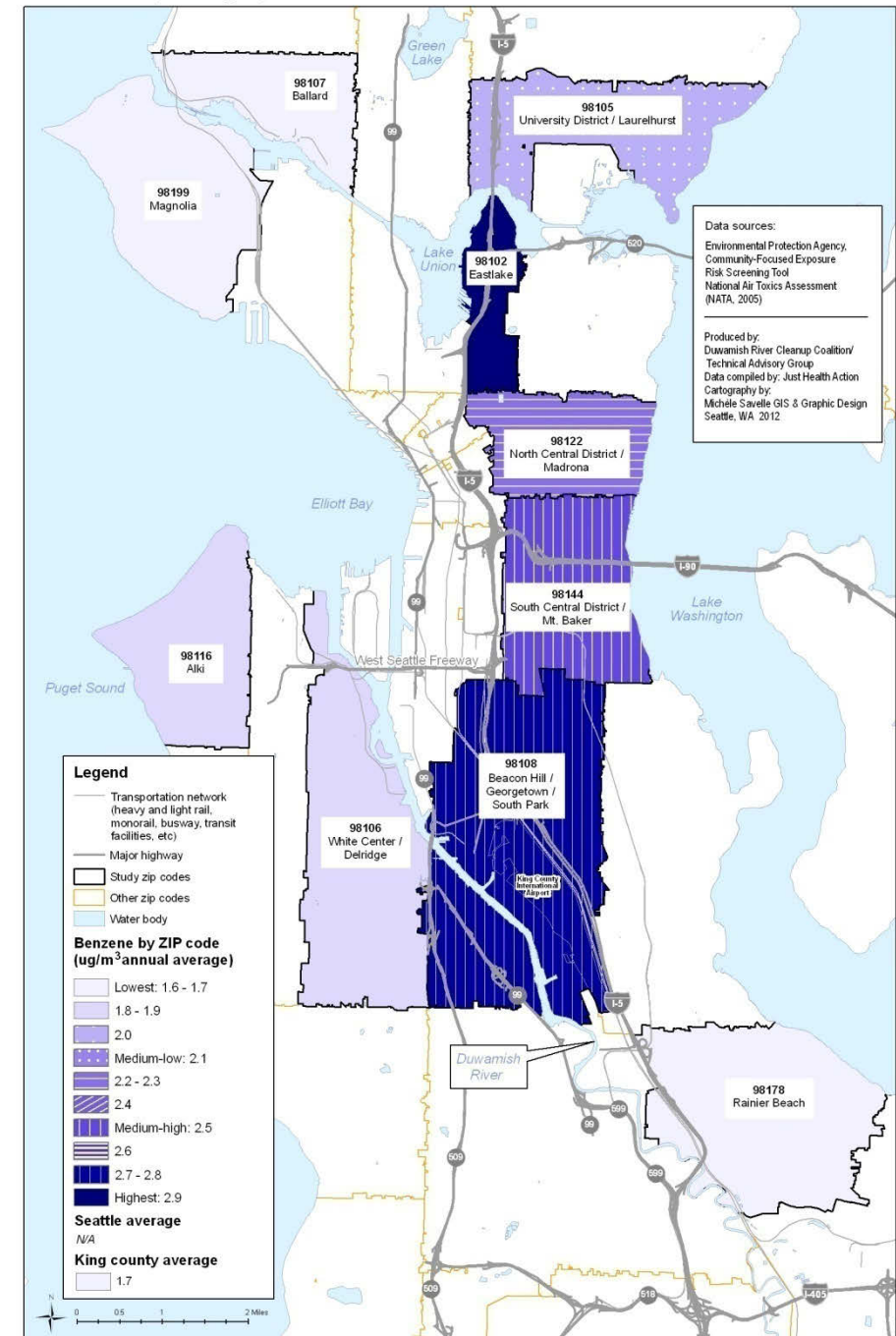


Figure 9. Annual Average Benzene in Human Breathing Zone ($\mu\text{g}/\text{m}^3$), by ZIP Code Seattle, Washington, 2005



EPA C-FERST
Environmental
exposures
component
(Rank 1-10):
Annual Average
Benzene in human
breathing zone
($\mu\text{g}/\text{m}^3$), by ZIP
code

**EPA C-FERST
Environmental
exposures
component
(Rank 1-10):
Annual Average
Diesel Particulate
Matter in human
breathing zone
($\mu\text{g}/\text{m}^3$), by ZIP
code**

Figure 8. Annual Average Diesel Particulate Matter in Human Breathing Zone ($\mu\text{g}/\text{m}^3$), by ZIP Code Seattle, Washington, 2005

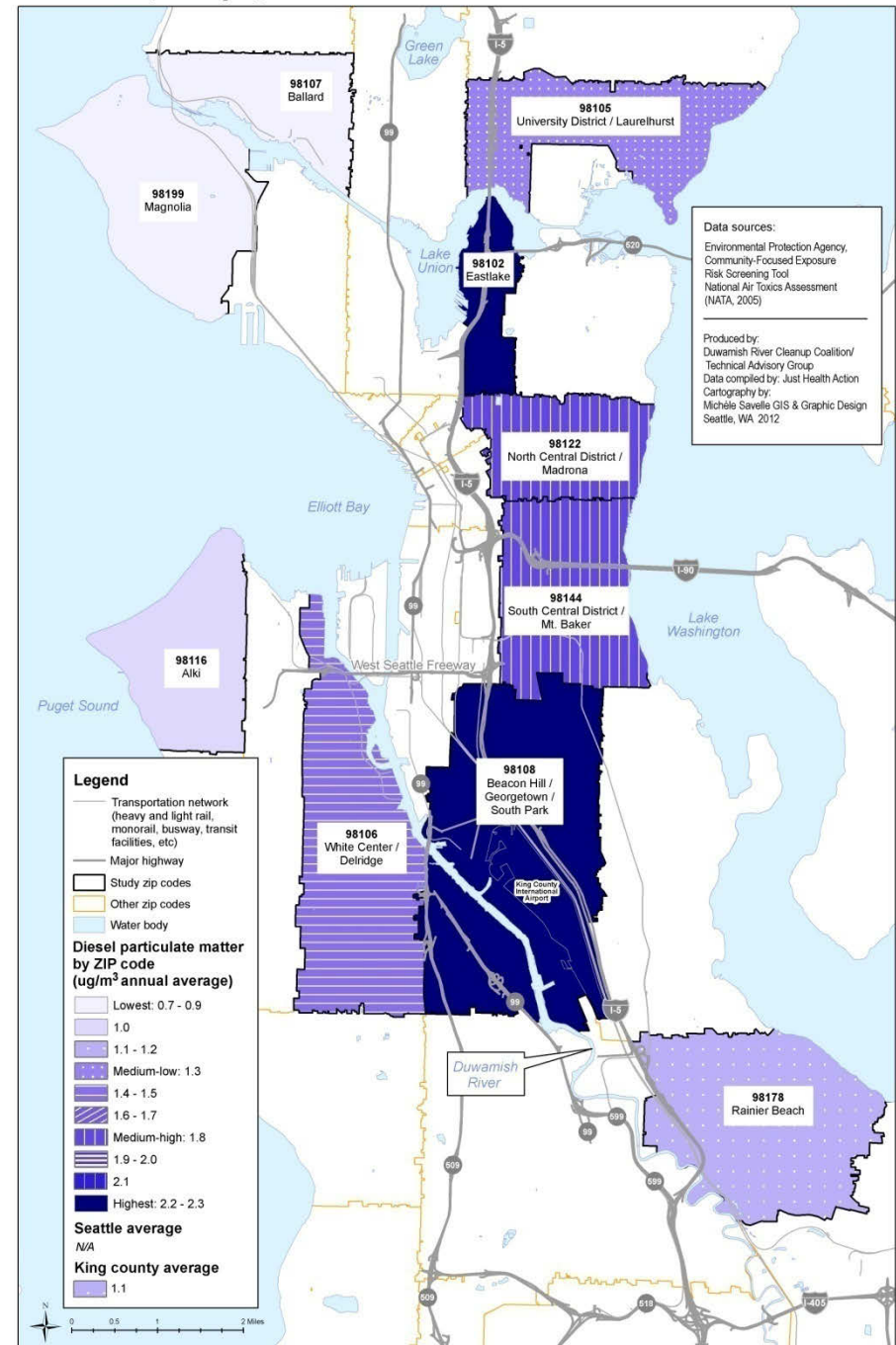


Figure 13. Number of Toxic Release Inventory Sites, by ZIP Code
Seattle, Washington

**EPA TRI Data
Environmental
effects
component
(Rank 1-5):
Number of Toxic
Release Inventory
Sites, by ZIP code**

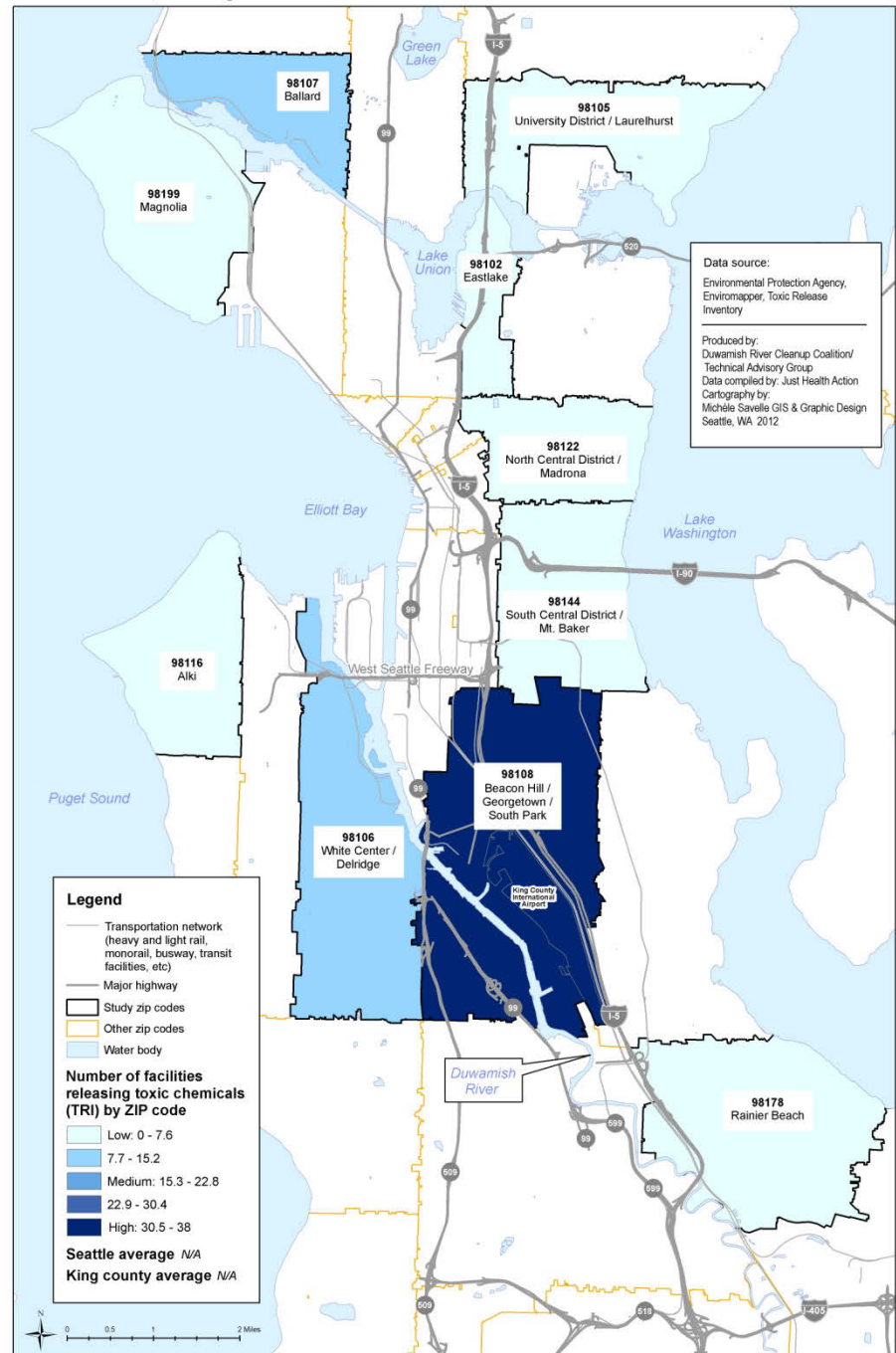
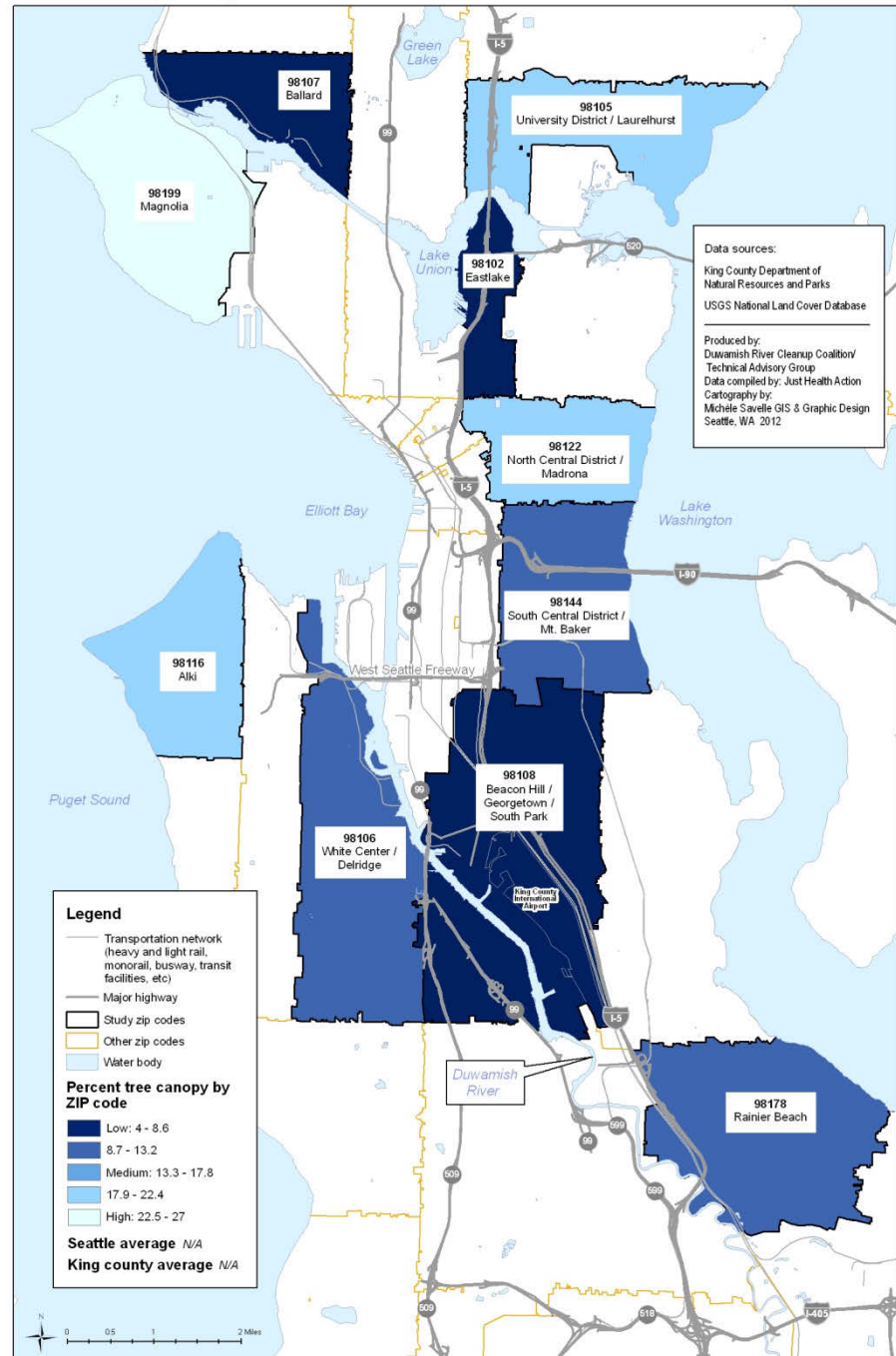


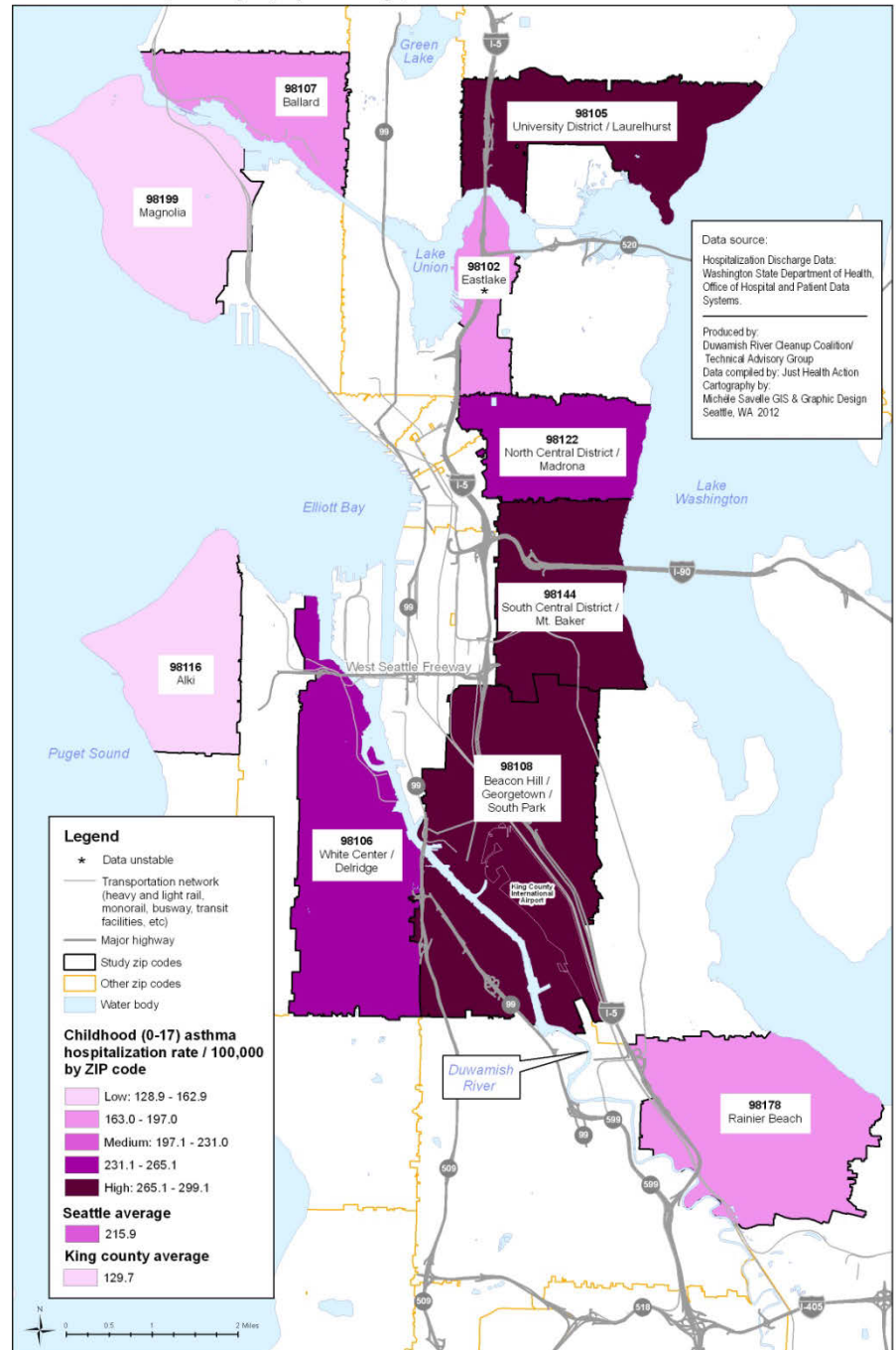
Figure 11. Percent Tree Canopy, by ZIP Code
Seattle, Washington

Environment factors component (Rank 1-5): Percent Tree Canopy by ZIP code



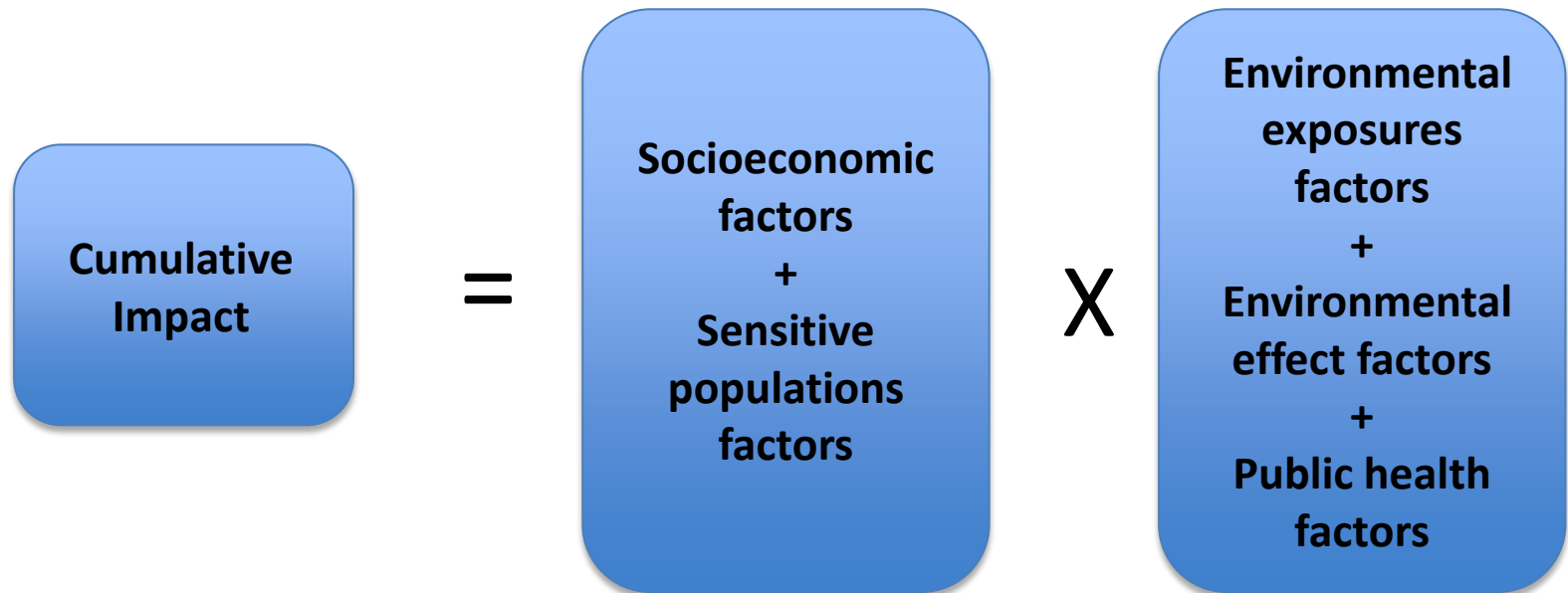
Public health factors component (Rank 1-5): Childhood asthma hospitalization rate per 100,000 by ZIP code

Figure A8. Childhood (0-17) Asthma Hospitalization Rate per 100,000, by ZIP Code Seattle, Washington, 5-year average, 2006-2010



Cumulative Health Impacts Formula:

Input 3 indicators from each component



Source: Cal/ EPA Cumulative Impacts: Building a Scientific Foundation, 2010

Georgetown/South Park disparities

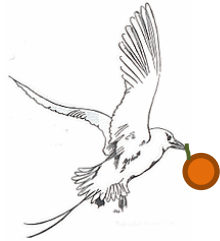
Indicator	Georgetown /South Park Census tracts 109 and 112	Laurelhurst Census tracts 4100 and 4200	Seattle	King County
Life expectancy at birth (years)	73.3*	86.4*	81.5	81.5
Heart disease death rate per 100,000	202.9#	89.6*	138.4	137.8

Source: Public Health Seattle & King County

*p=0.05 from both KC and Seattle average

#p= 0.05 for KC average only

Community Action Grants



4th grade COOKS!

Tonight's menu:

- ~ Pupusas with kale, onions & black beans
- ~ Repollo (cabbage) with lime and salt
- ~ Spanish Rice
- ~ Banana Splits with pineapple, pear, tropical fruits, almonds and Full Tilt vanilla ice cream!

El menú de esta noche:

- ~ Pupusas con col verde, cebollas, y frijoles negros
- ~ Repollo con limón y sal
- ~ Arroz española
- ~ Banara Split con piña, pera, frutas tropicales, almendras, y helado de sabor vanilla de Full Tilt (en White Castle)

4th Grade COOKS!

4th Grade COOKS!

4th Grade COOKS!

4th Grade COOKS!



Pollution control: Duwamish Valley Cisterns and Rain Gardens



Influencing Decision-Making



- Evidence base when giving neighborhood “toxic tours”
- Advocating for more resources to improve neighborhood conditions
- Citation when requesting funding for grants
- Informs community outreach efforts
- Helps identify mitigation measures for site cleanups and construction activities
- Information dissemination
- King County and Seattle Equity and Social Initiatives
- Seattle Mayor sets aside \$250,000 *Duwamish River Opportunity Fund* to develop health interventions and mitigation for local residents



QUESTIONS?

Where to get Duwamish Valley Cumulative Health Impacts Analysis (CHIA)?

- The full appendices, and poster can be found at: www.justhealthaction.org/resources/jha-publications
- Our CHIA and associated Environmental Justice curriculum should be available for free online by early 2015.

Thank You!

Contact:

Linn Gould

gouldjha@gmail.com

www.justhealthaction.org

(206) 324-0297



ACKNOWLEDGEMENTS

- Paulina Lopez – Community expert
- BJ Cummings – Co-author



Technical Advisory
Group



SCHOOL OF PUBLIC HEALTH
UNIVERSITY of WASHINGTON



Possible extras

Diesel Exhaust by Neighborhood

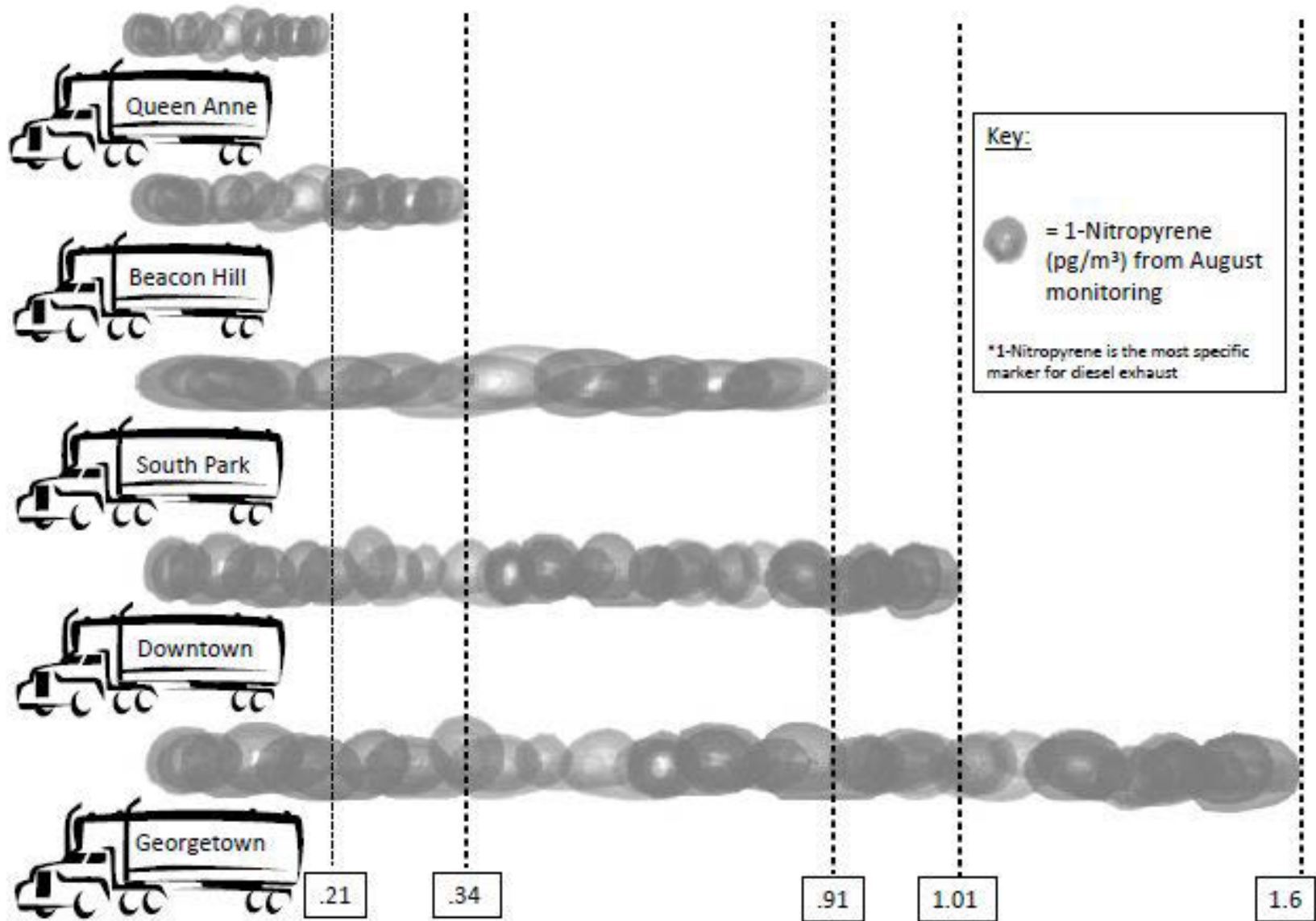
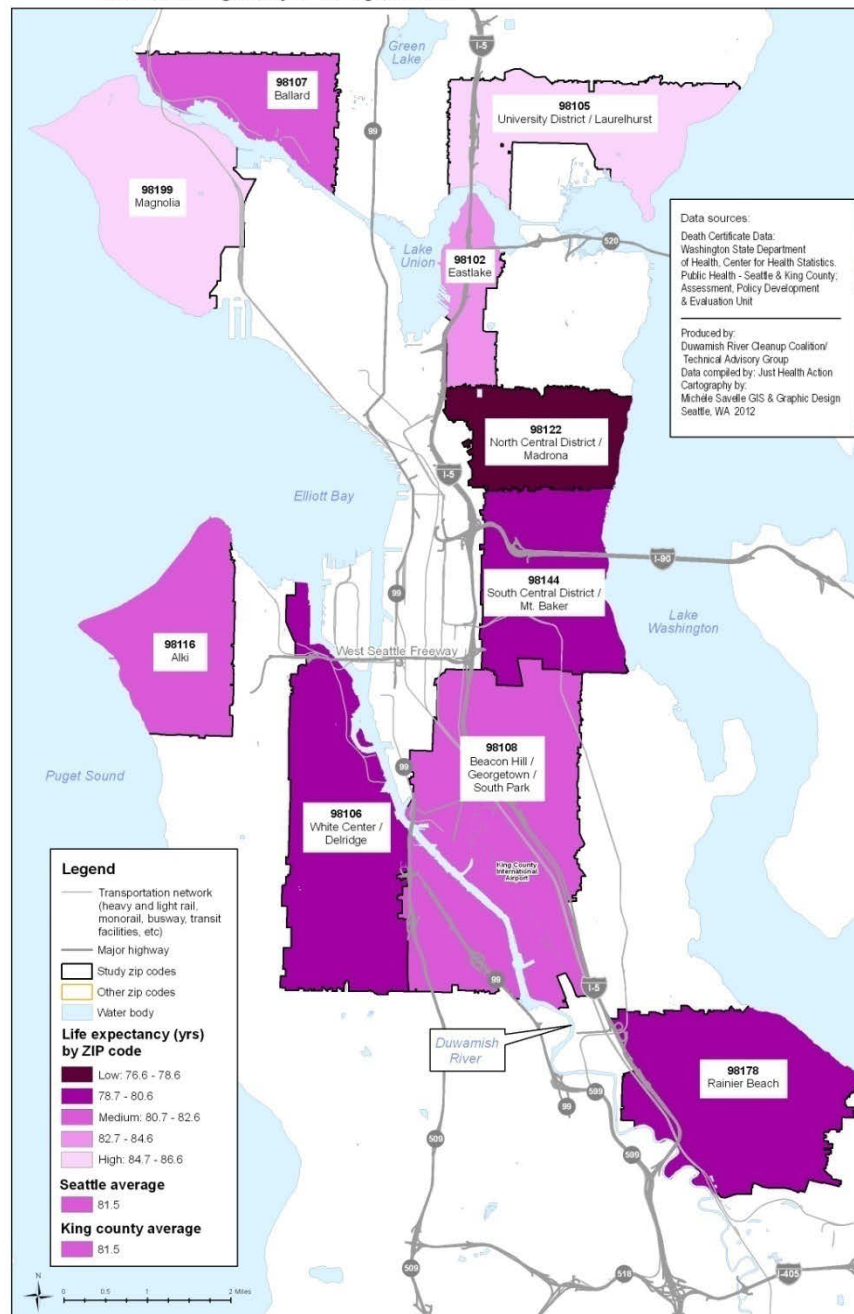


Figure A3. Life Expectancy at Birth in Years, by ZIP Code
Seattle, Washington, 5 year average, 2005-2009

Public health factors component (Rank 1-5): Life Expectancy at birth by ZIP code, 5 year average (2005-2009)



Percent adults overweight or obese, by ZIP code, 5 year average

Figure A4. Percent Adults Overweight or Obese by ZIP Code
Seattle, Washington, 5-year Average 2007-2011

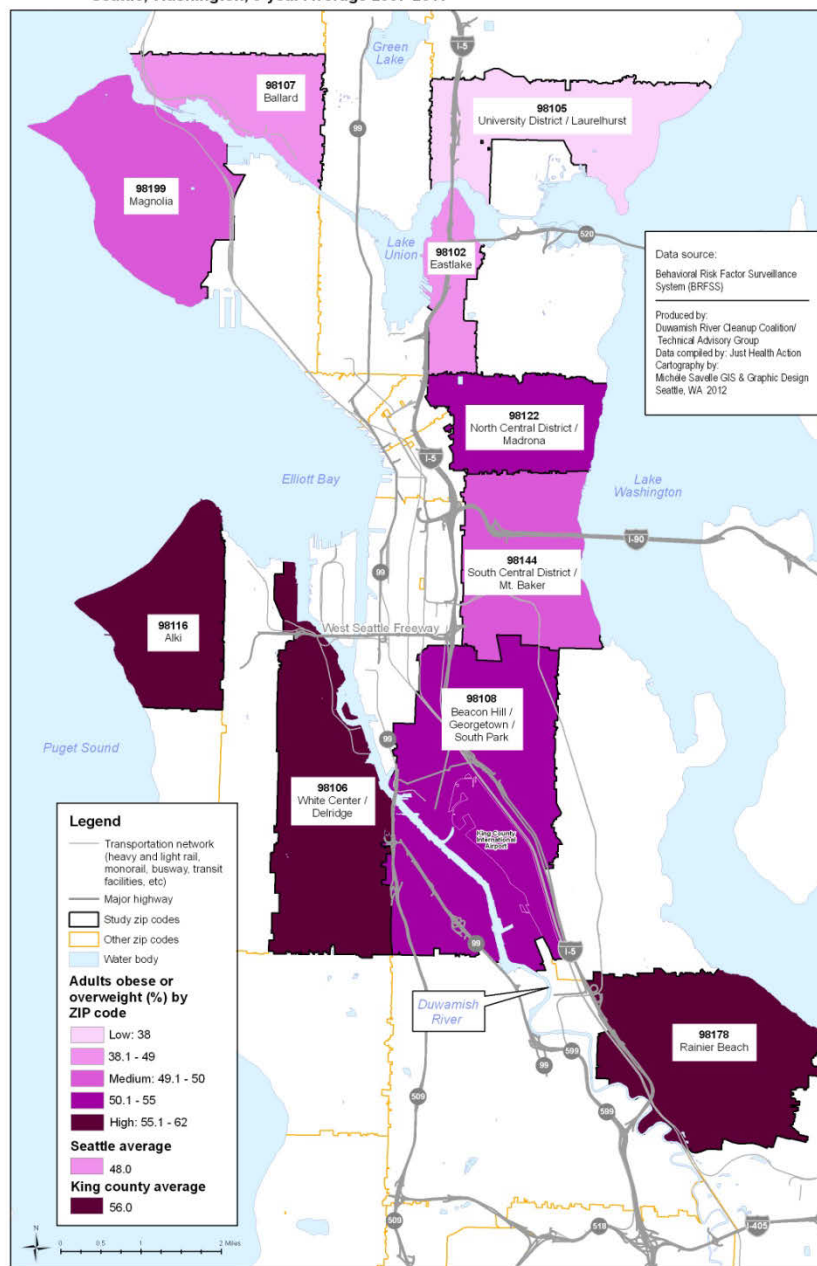
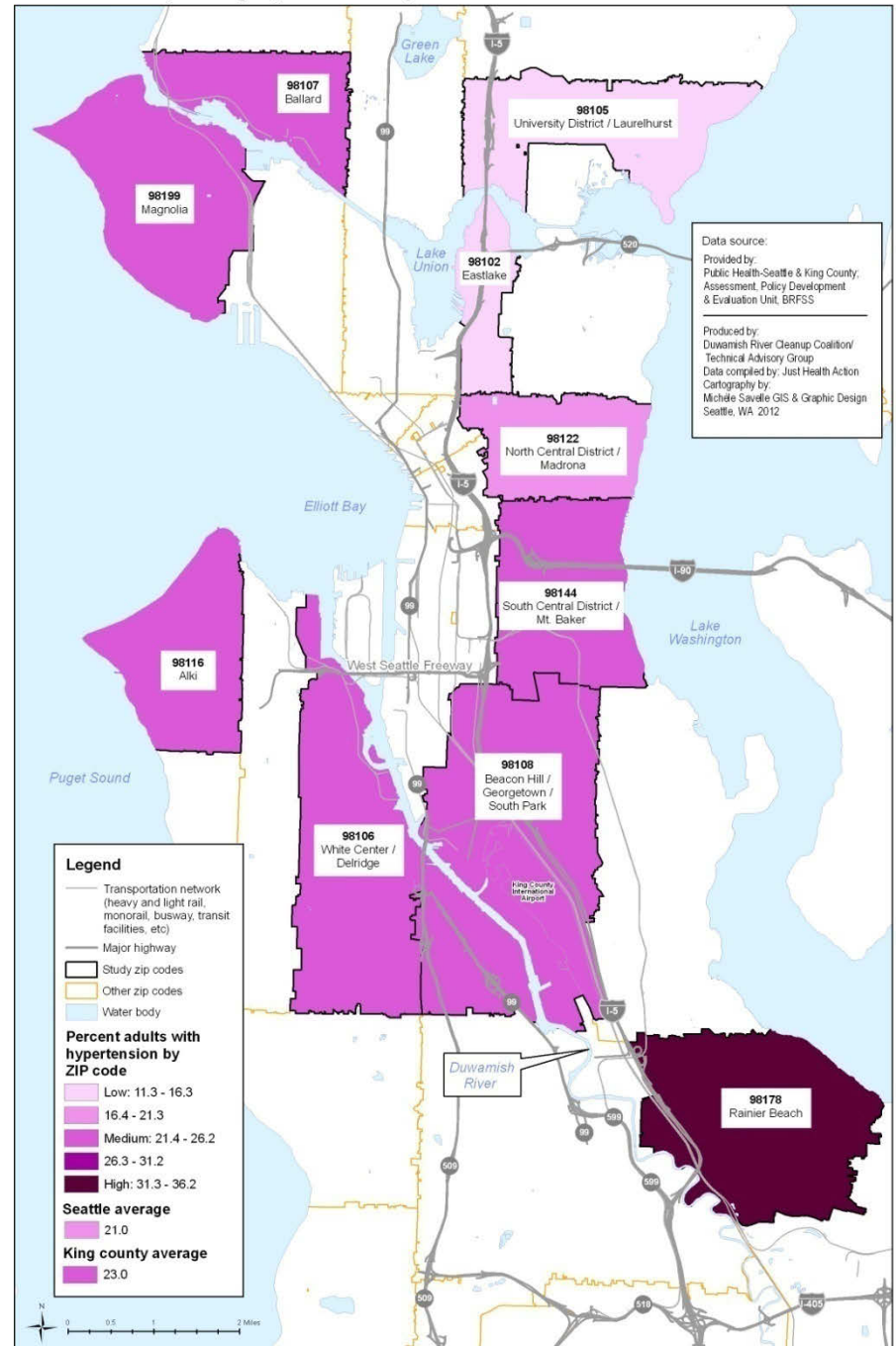


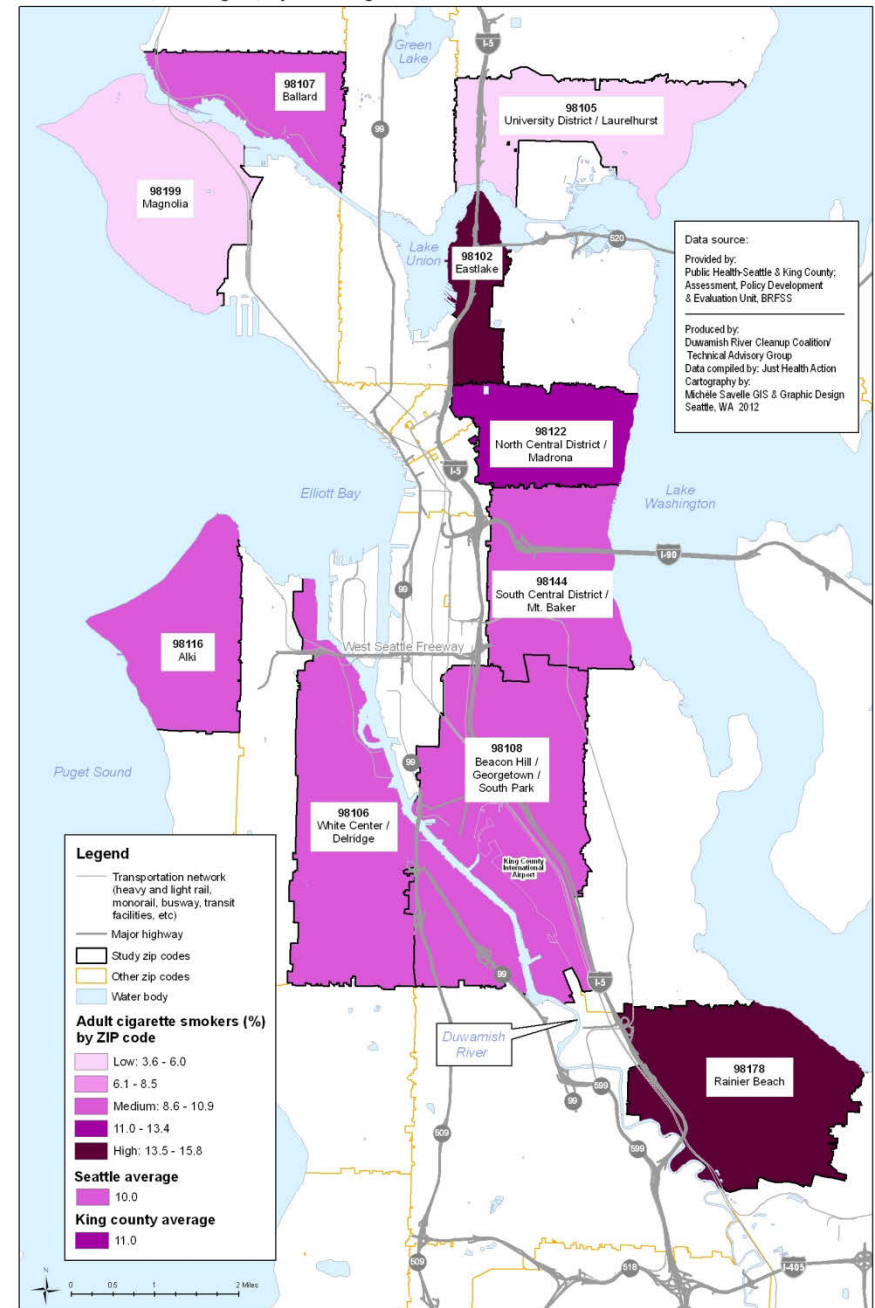
Figure A7. Percent Adults with Hypertension, by ZIP Code
 Seattle, Washington, 2003-2011 odd years

Percent adults with Hypertension, by ZIP code



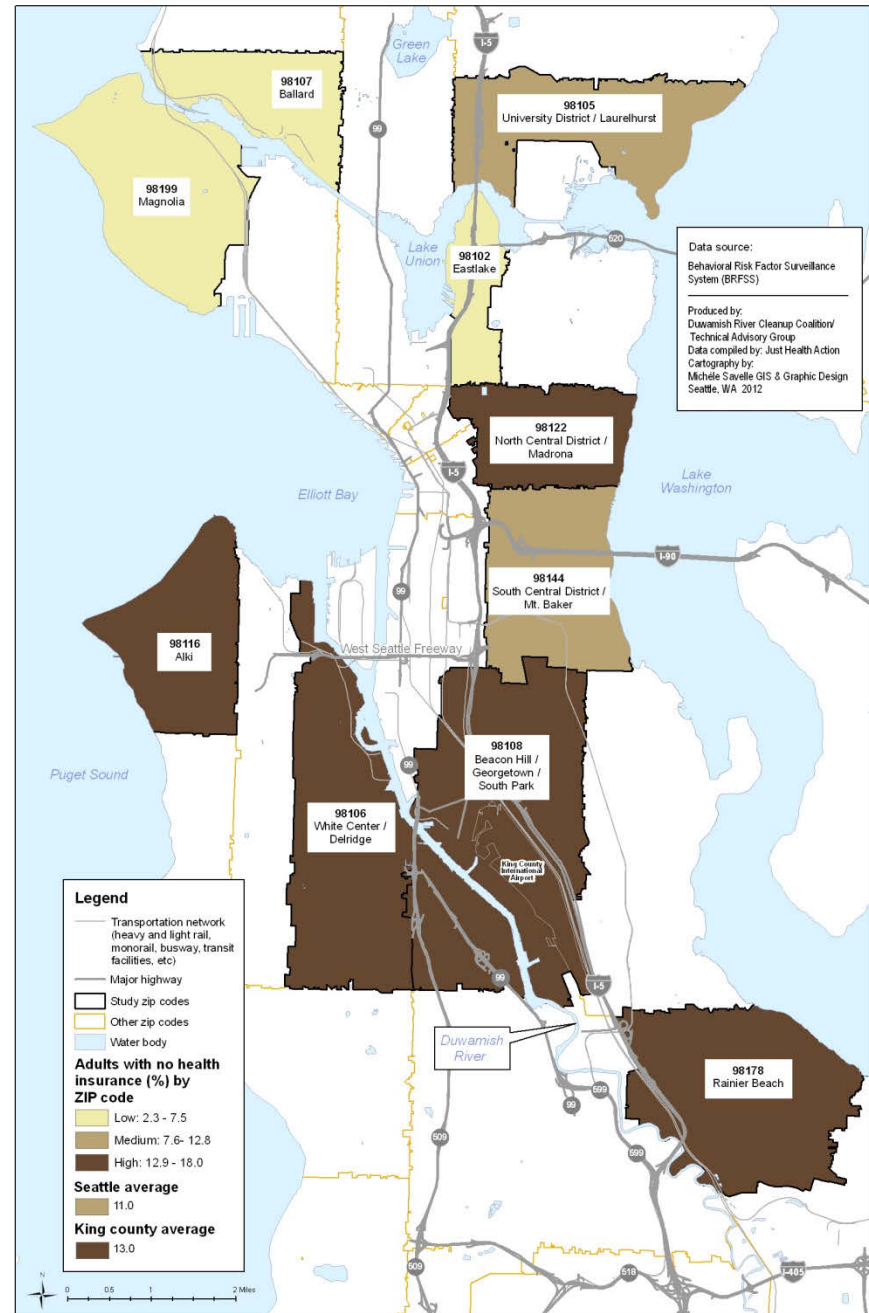
Percent adult cigarette smokers

Figure 15. Percent Adult Cigarette Smokers, by ZIP Code
Seattle, Washington, 5-year Average 2007-2011



Percent adults no health insurance

Figure A1. Percent Adults (18-64 years) With No Health Insurance, by ZIP Code
Seattle, Washington, 5-year Average 2007-2011



Lung cancer death rate

Figure 16. Lung Cancer Death Rate Per 100,000, by ZIP Code
Seattle, Washington, 5-year average, 2006-2010

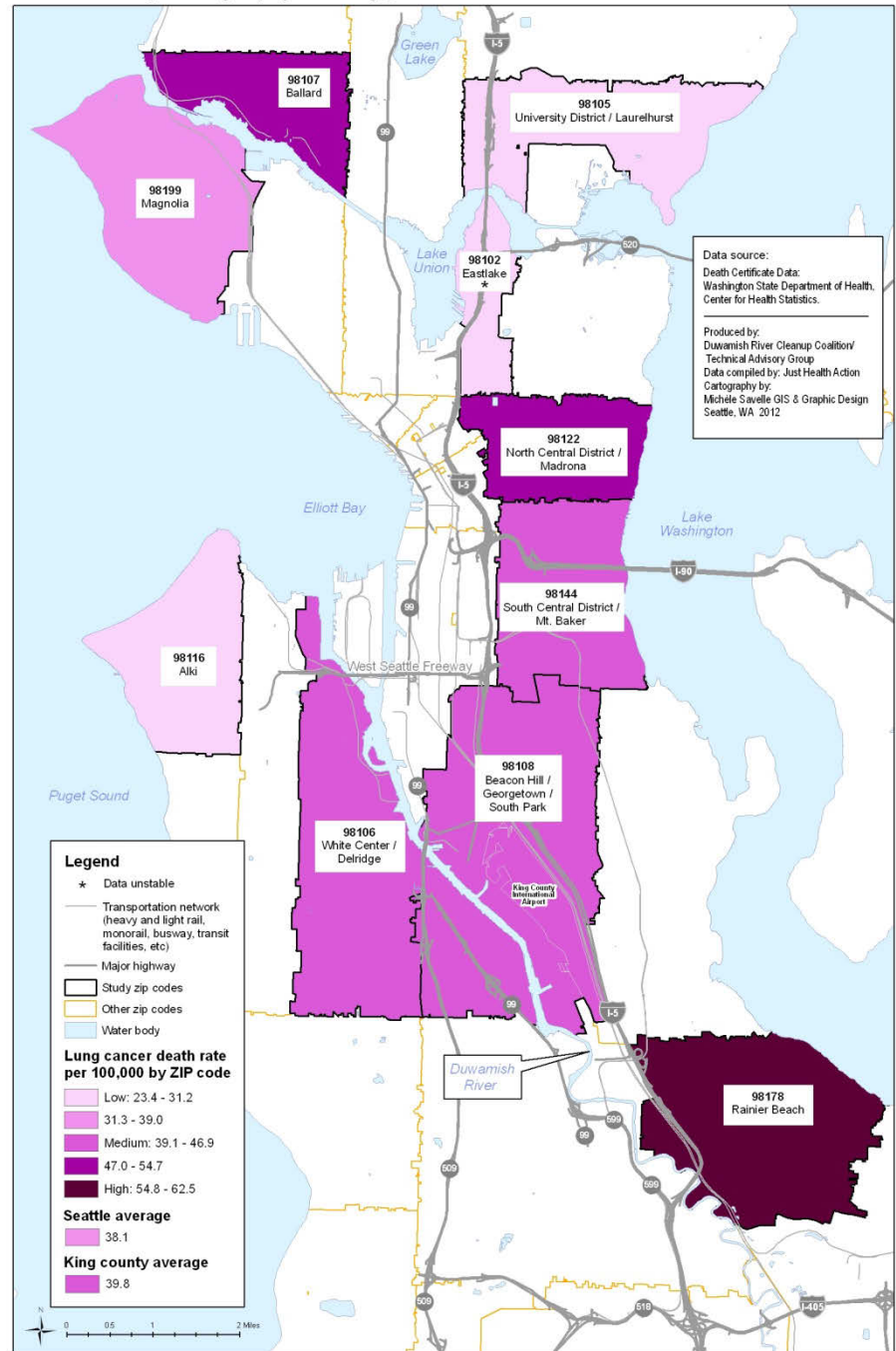


Figure A9. Assault Hospitalization Rate Per 100,000, by ZIP Code
Seattle, Washington, 5-year average, 2006-2010

Assault hospitalization rate per 100,000, by ZIP code

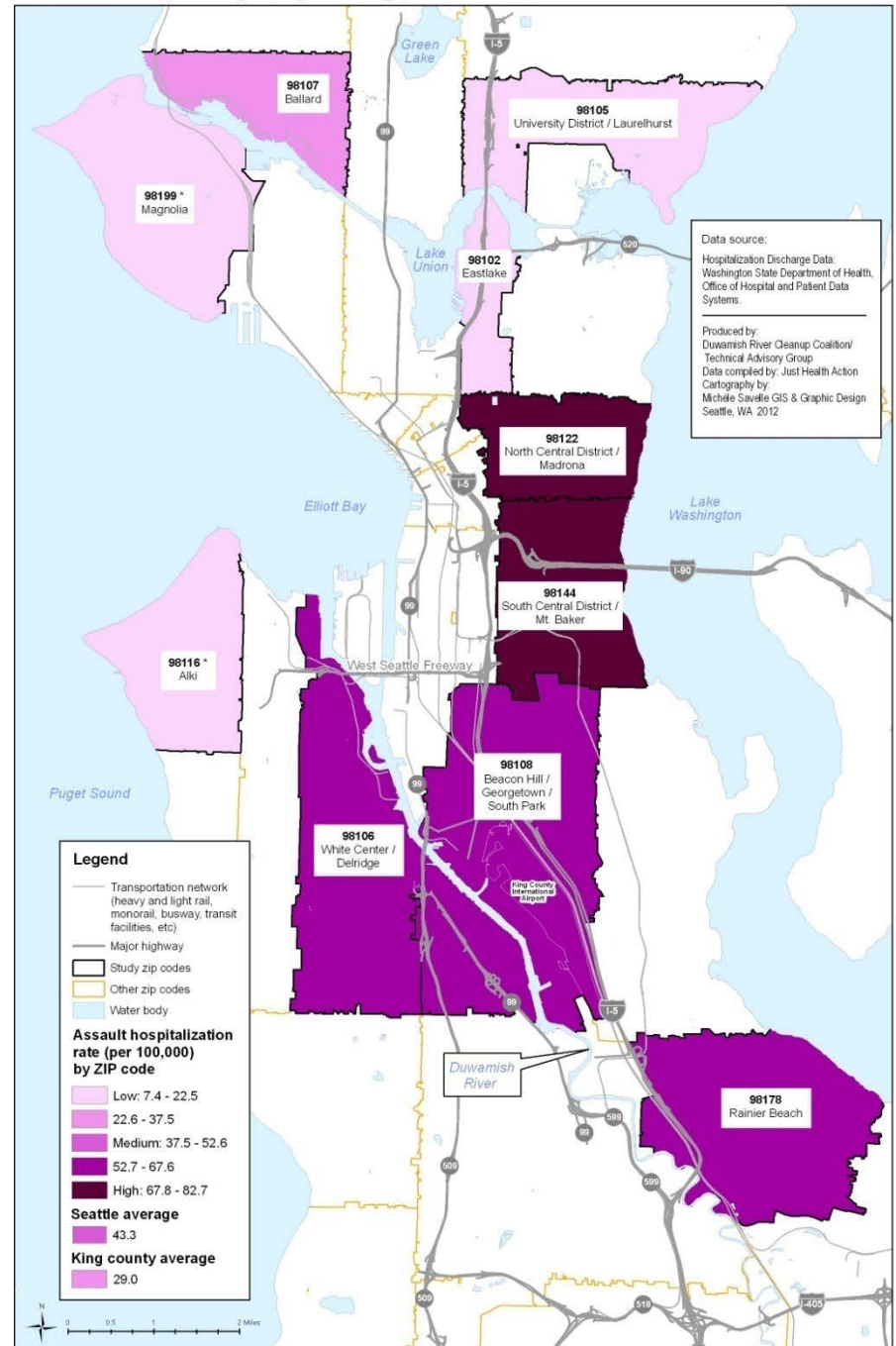


Figure 2. Percent Adults 25 and older Without a College Degree, by ZIP Code
Seattle, Washington, 5-year Average 2006-2010

Percent adults
25 and older
without a college
degree, by ZIP
code

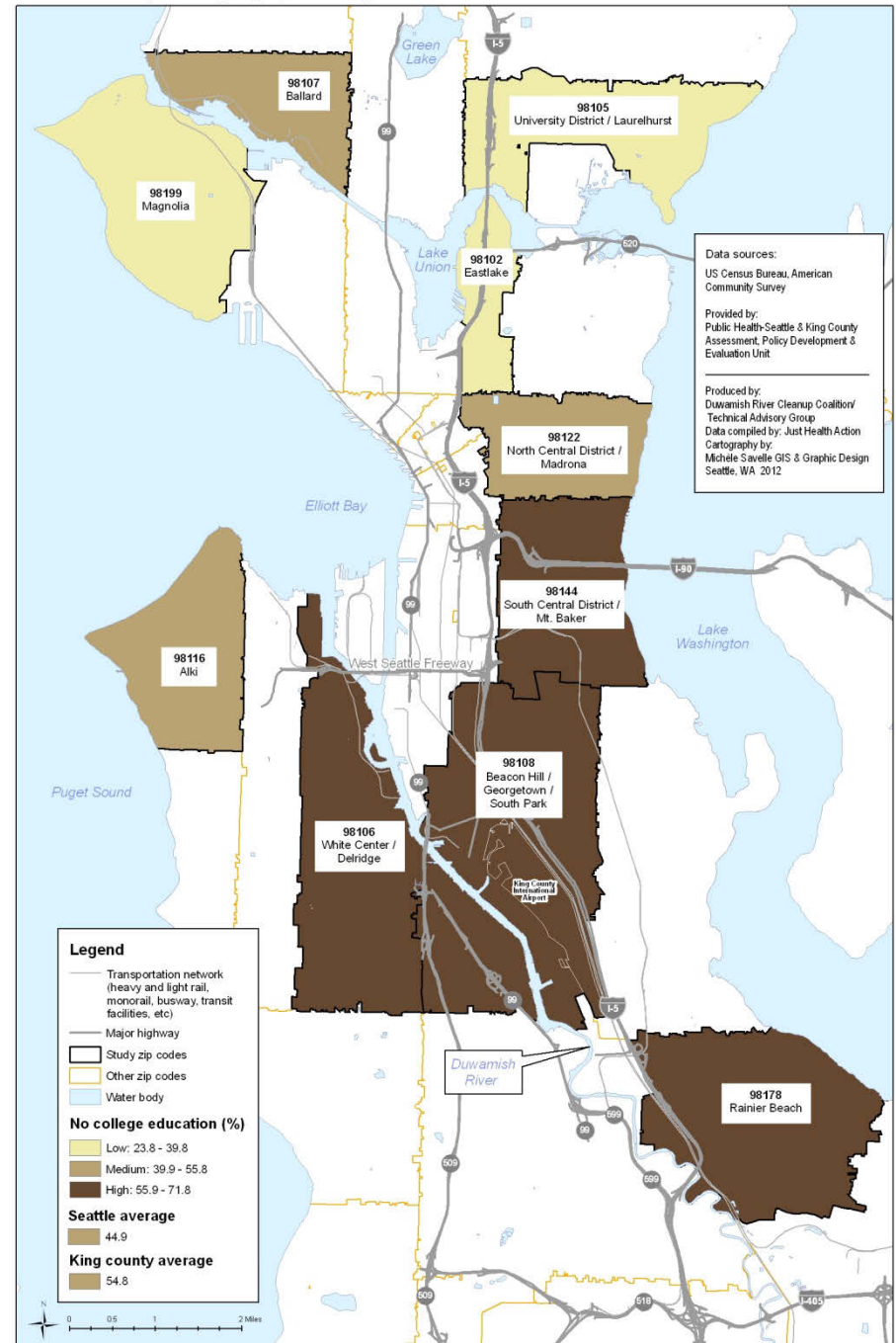


Figure A2. Percent Adults With No Leisure Time Physical Activity, by ZIP Code
 Seattle, Washington, 5-year Average 2007-2011

Percent adults with no leisure time physical activity, by ZIP code

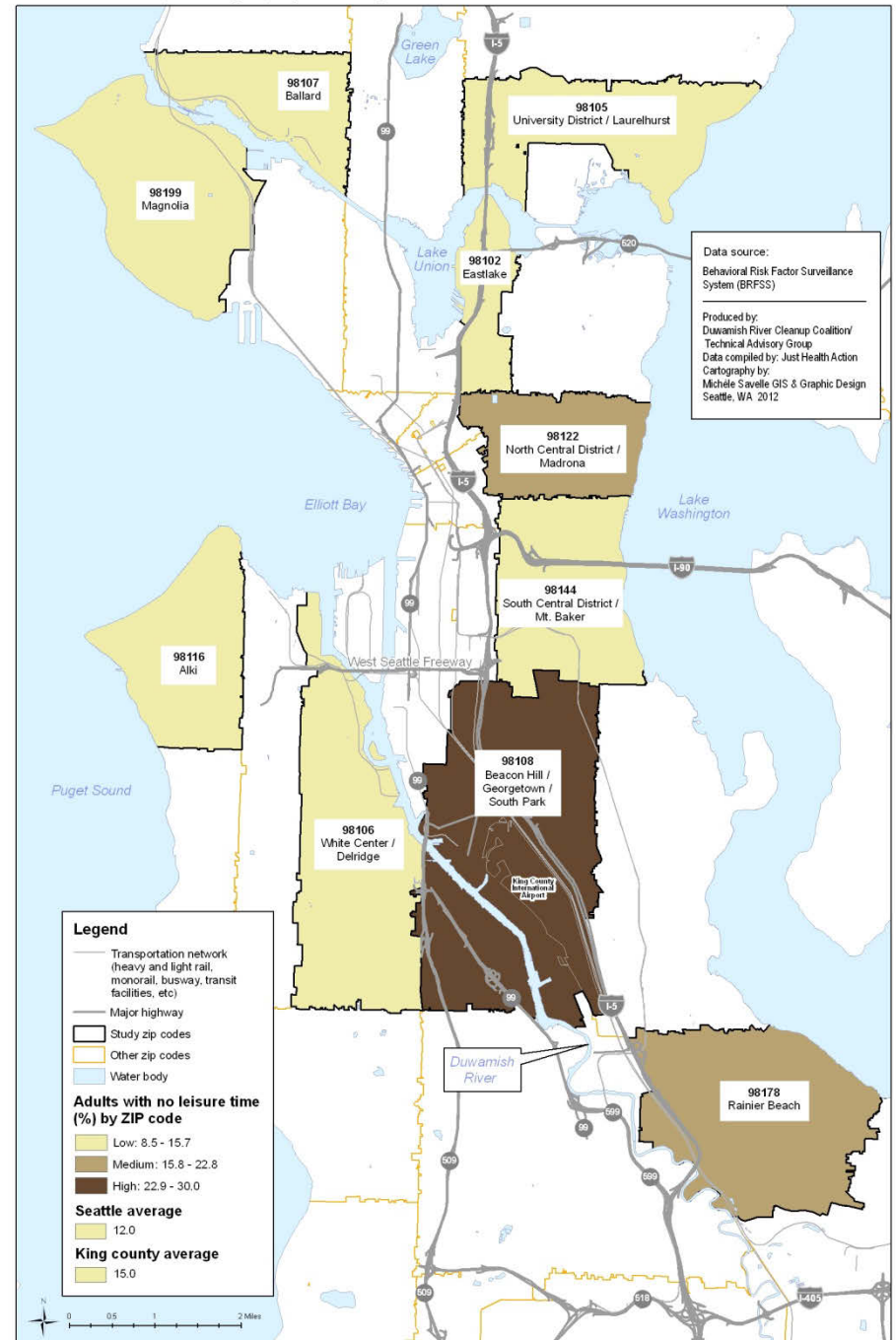
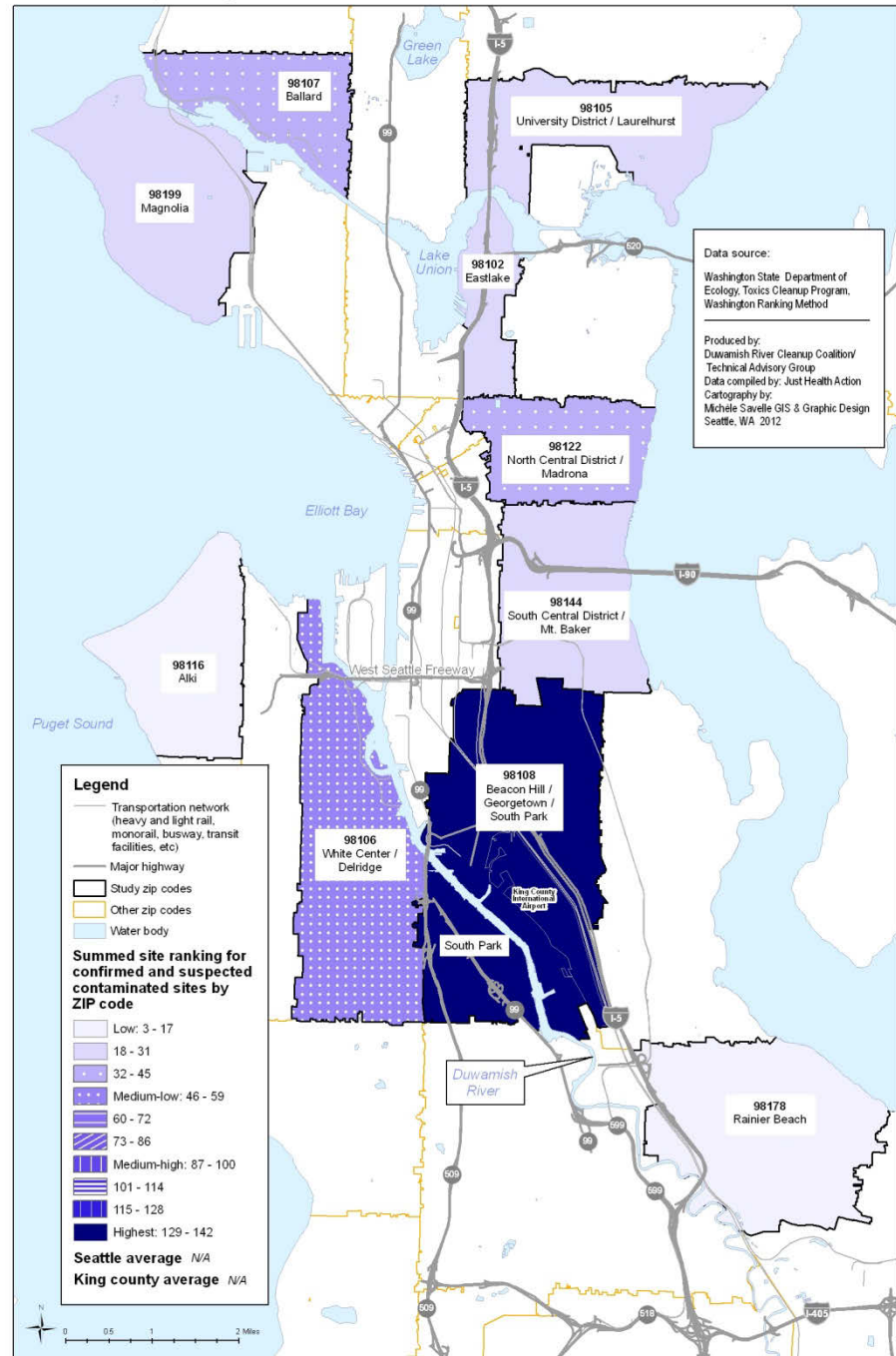


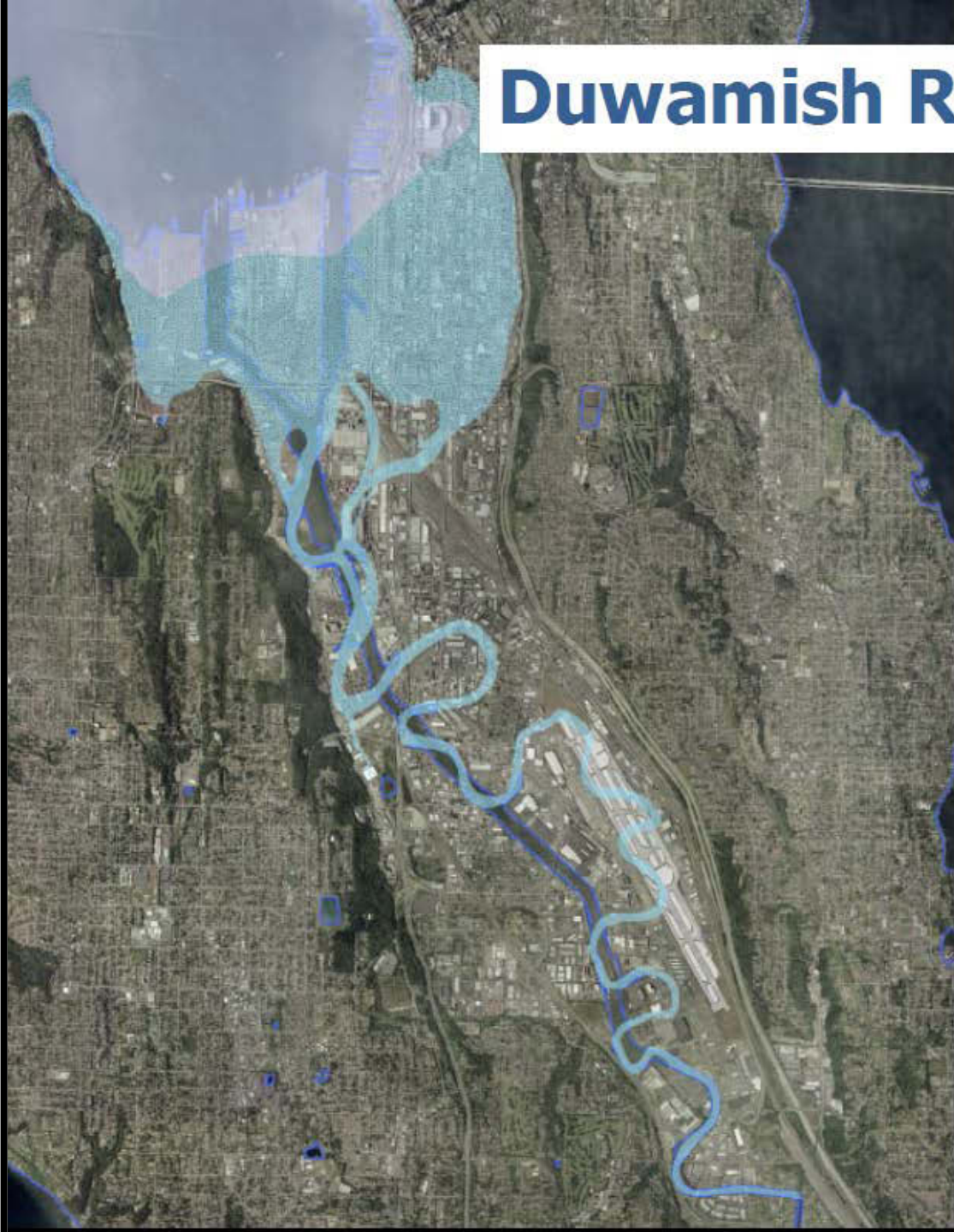
Figure 10. Summed Site Ranking for Confirmed and Suspected Contaminated Sites, by ZIP Code
Seattle, Washington

**Environmental exposures component
(Rank 1-10):
Summed Site Ranking
for confirmed and
suspected sites by
ZIP code**





Duwamish River Then & Now



Light blue
river before
1909

Dark blue
current
waterway



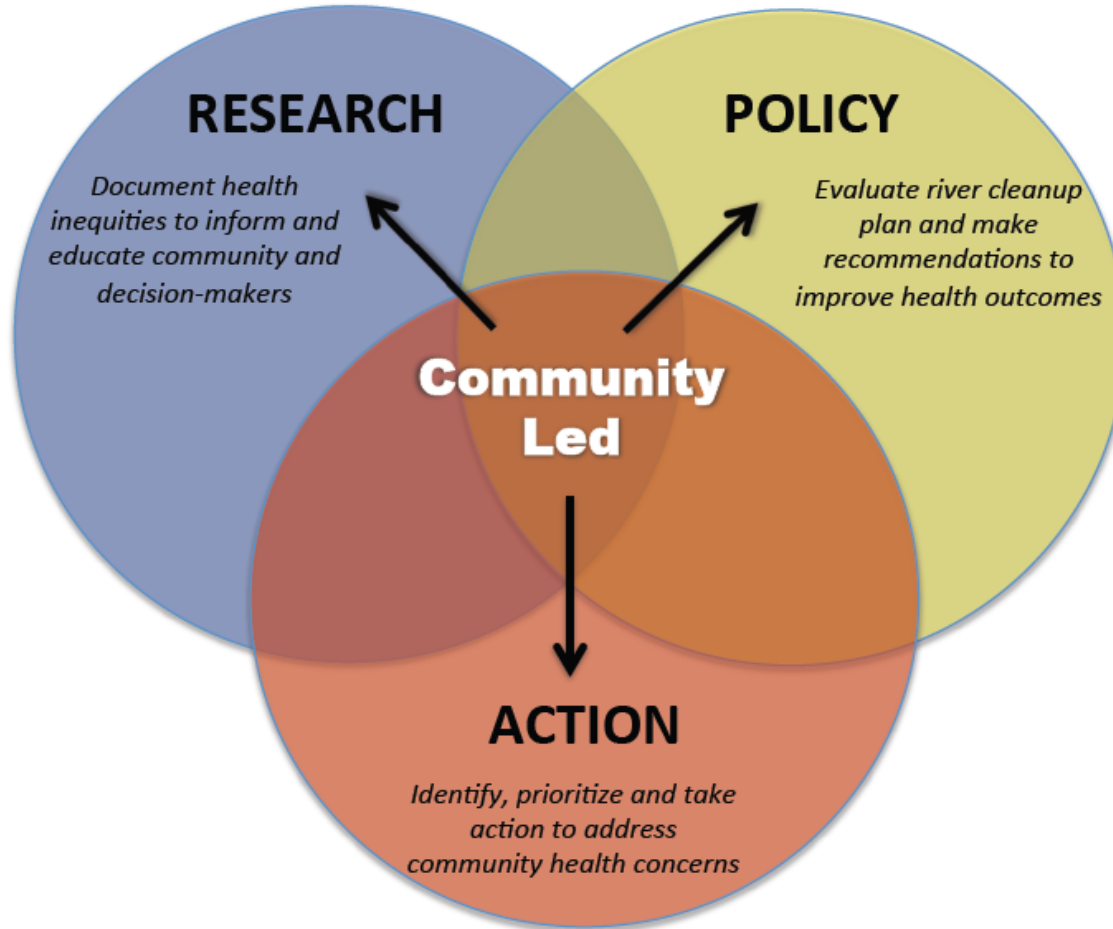
Duwamish Valley Healthy Communities Project



Improving environmental and human health through

- *community-based research*
- *promoting protective and equitable policies*
- *taking action!*

Cumulative Health Impacts Analysis (CHIA, EPA EJ)

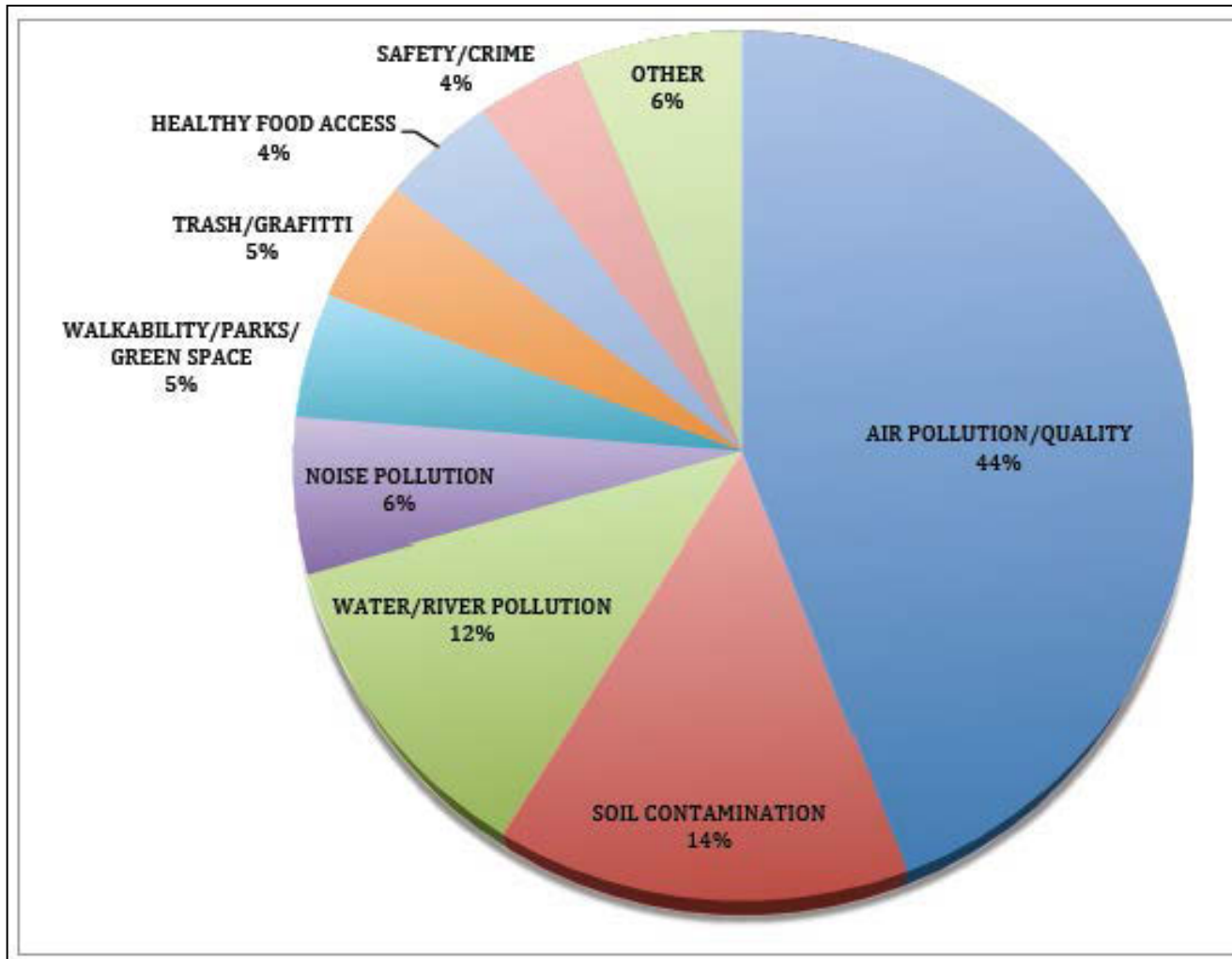


Duwamish Cleanup Health Impact Assessment (HIA, Pew/RWJF)

Community Action for Renewed Environment (CARE, EPA)



EPA CARE grant: What are community health issues?



Seattle industrial corridor

