

For assistance in accessing this document, please contact Quality@epa.gov.

Exhibit A

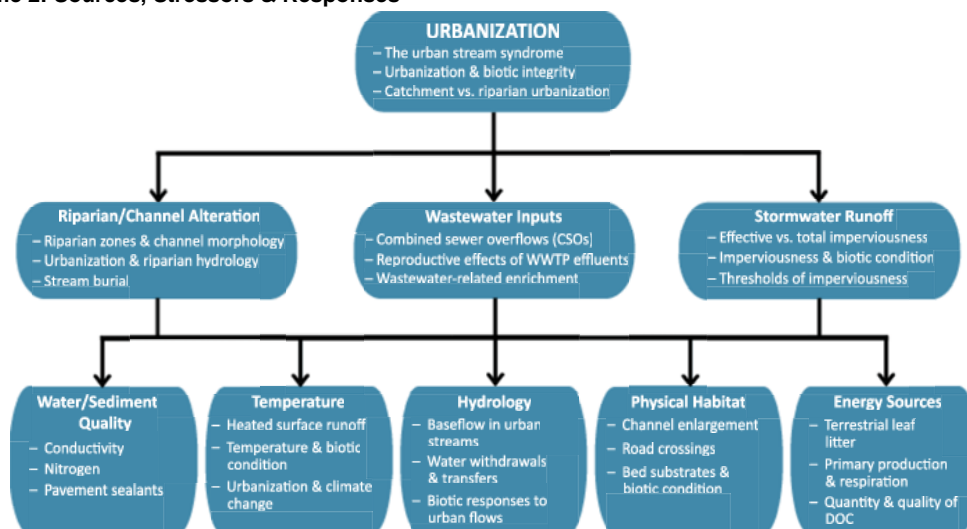
CADDIS: The Causal Analysis/Diagnosis Decision Information System

Volume 2: Sources, Stressors & Responses

http://www.epa.gov/caddis/ssr_urb_intro.html



CADDIS Volume 2: Sources, Stressors & Responses



Click on any heading to see more detailed information about that pathway.
 Click on subheadings to read more about highlighted topics under each heading.

Urbanization is an increasingly pervasive land cover transformation that significantly alters the physical, chemical and biological environment within surface waters.

The diagram above provides a simple schematic illustrating pathways through which urbanization may affect stream ecosystems. **Riparian/channel alteration**, **wastewater inputs** and **stormwater runoff** associated with urbanization can lead to changes in five general stressor categories: **water/sediment quality**, **water temperature**, **hydrology**, **physical habitat** within the channel, and basic **energy sources** for the stream food web.

This module is organized along these pathways. You can learn more about urban stream sources and stressors by clicking on these headings in the diagram above. You can click on subheadings within each shape to learn about specific topics in greater detail. To return to this organizational diagram from any point in the module, simply click on the Urbanization link in navigation bar (at left) or in the breadcrumbs (at top).

You also can download a [PDF version of the Urbanization module](#) (44pp, 3MB, [About PDF](#)), and view a [complete list of references](#) cited in the module.

Last updated on Tuesday, July 31, 2012

Exhibit B

EPA Publication #1

CADDIS Volume 2: Sources, Stressors & Responses

Pavement sealants & PAHs
&
References for the Urbanization Module

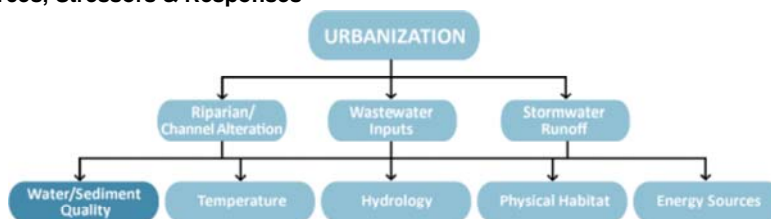
http://www.epa.gov/caddis/ssr_urb_wsq4.html

&

http://www.epa.gov/caddis/ssr_urb_ref.html



CADDIS Volume 2: Sources, Stressors & Responses



Pavement sealants & PAHs

Polycyclic aromatic hydrocarbons (PAHs) are common pollutants in urban streams, resulting from numerous transportation-related sources including **oil leakage, vehicle exhaust, tire and brake wear, and pavement erosion**. Many studies have shown that these compounds can **adversely affect stream biota** (e.g., [Maltby et al. 1995](#), [Pinkney et al. 2004](#)).



Pavement sealants are routinely applied to parking lots and driveways to protect the underlying surfaces, and these sealants can be significant sources of PAHs. For example:

- PAH concentrations were **65 times higher** in runoff from coal-tar seal-coated parking lots versus unsealed parking lots ([Mahler et al. 2005](#)).
- PAH concentrations in stream sediments were **3.9 to 32 mg kg⁻¹ higher** downstream of coal-tar seal-coated parking lots versus upstream reference sites ([Scoggins et al. 2007](#)).

[Scoggins et al. \(2007\)](#) examined the effect of these sealcoats on benthic macroinvertebrate assemblages. They found that:

- Average **macroinvertebrate densities were two times higher** at sites upstream of seal-coated parking lots.
- **Chironomid density decreased** at sites downstream of seal-coated parking lots, whereas **oligochaete density usually increased**.
- **Increases in pool habitat PAH sediment toxicity units** between sites upstream and downstream of seal-coated parking lots explained **decreases in macroinvertebrate richness and density** (Fig 25).

Click below for more information on specific topics

Urbanization & conductivity	Nitrogen in urban streams	Pavement sealants
-----------------------------	---------------------------	-------------------

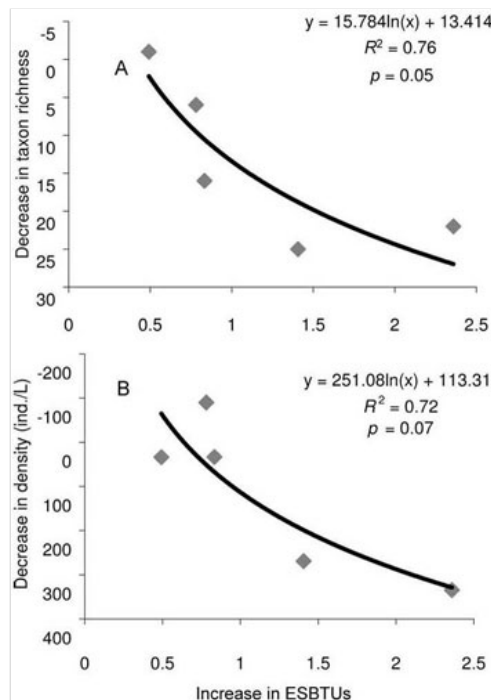


Figure 25. Regression plot of the decrease in (A) macroinvertebrate richness and (B) density between sites upstream and downstream of seal-coated parking lots, as a function of the increase in PAH equilibrium partitioning sediment benchmark toxicity units (ESBTUs) in pool sediments between those sites. ESBTUs were based on 16 EPA priority PAH pollutants; values > 1 suggest toxicity.

From [Scoggins M et al. 2007. Occurrence of polycyclic aromatic hydrocarbons below coal-tar-sealed parking lots and effects on stream benthic macroinvertebrate communities. Journal of the North American Benthological Society 26\(4\):694-707.](#) Reprinted with permission.



CADDIS Volume 2: Sources, Stressors & Responses

References for the Urbanization Module

Alberti M, Booth D, Hill K, Coburn B, Avolio C, Coe S, Spirandelli D (2007) The impact of urban patterns on aquatic ecosystems: An empirical analysis in Puget lowland sub-basins. *Landscape and Urban Planning* 80:345-361.

Alig RJ, Kline JD, Lichtenstein M (2004) Urbanization on the US landscape: looking ahead in the 21st century. *Landscape and Urban Planning* 69(2-3):219-234.

Allan JD (1995) *Stream Ecology: Structure and Function of Running Waters*. Chapman & Hall, London UK.

Allan JD (2004) Landscapes and riverscapes: the influence of land use on stream ecosystems. *Annual Review of Ecology and Systematics* 35:257-284.

Alley WM, Veenhuis JE (1983) Effective impervious area in urban runoff modeling. *Journal of Hydraulic Engineering* 109(2):313-319.

Allmendinger NE, Pizzuto JE, Moglen GE, Lewicki M (2007) A sediment budget for an urbanizing watershed, 1951-1996, Montgomery County, Maryland, U.S.A. *Journal of the American Water Resources Association* 43:1483-1498.

Andersen CB, Lewis GP, Sargent KA (2004) Influence of wastewater-treatment effluent on concentrations and fluxes of solutes in the Bush River, South Carolina, during extreme drought conditions. *Environmental Geosciences* 11(1):28-41.

Arnold CL, Gibbons CJ (1996) Impervious surface coverage - the emergence of a key environmental indicator. *Journal of the American Planning Association* 62(2):243-258.

Baker LA (2009) New concepts for managing urban pollution. Pp. 69-91 in: Baker LA (Eds). *The Water Environment of Cities*. Springer Science+Business Media, LLC.

Barber LB, Murphy SF, Verplanck PL, Sandstrom MW, Taylor HE, Furlong ET (2006) Chemical loading into surface water along a hydrological, biogeochemical, and land use gradient: A holistic watershed approach. *Environmental Science & Technology* 40:475-486.

Benton PD, Ensign WE, Freeman BJ (2008) The effect of road crossings on fish movements in small Etowah Basin streams. *Southeastern Naturalist* 7(2):301-310.

Bilby RE, Mollot LA (2008) Effect of changing land use patterns on the distribution of coho salmon (*Oncorhynchus kisutch*) in the Puget Sound region. *Canadian Journal of Fisheries and Aquatic Sciences* 65(10):2138-2148.

Blakely TJ, Harding JS, McIntosh AR, Winterbourn MJ (2006) Barriers to the recovery of aquatic insect communities in urban streams. *Freshwater Biology* 51:1634-1645.

Bledsoe BP, Watson CC (2001) Effects of urbanization on channel instability. *Journal of the American Water Resources Association* 37(2):255-270.

Booth DB, Jackson CR (1997) Urbanization of aquatic systems: Degradation thresholds, stormwater detection, and the limits of mitigation. *Journal of the American Water Resources Association* 33(5):1077-1090.

Booth DB, Karr JR, Schauman S, Konrad CP, Morley SA, Larson MG, Burger SJ (2004) Reviving urban streams: Land use, hydrology, biology, and human behavior. *Journal of the American Water Resources Association* 40(5):1351-1364.

Borchardt D, Statzner B (1990) Ecological impact of urban stormwater runoff studied in experimental flumes - population loss by drift and availability of refugial space. *Aquatic Sciences* 52(4):299-314.

Brandes D, Cavallo GJ, Nilson ML (2005) Base flow trends in urbanizing watersheds of the Delaware River Basin. *Journal of the American Water Resources Association* 41(6):1377-1391.

Brown LR, Cuffney TF, Coles JF, Fitzpatrick F, McMahon G, Steuer J, Bell AH, May JT (2009) Urban streams across the USA: lessons learned from studies in 9 metropolitan areas. *Journal of the North American Benthological Society* 28(4):1051-1069.

Burns D, Vitar T, McDonnell J, Hassett J, Duncan J, Kedall C (2005) Effects of suburban development on runoff generation in the Croton River basin, New York, USA. *Journal of Hydrobiology* 311:266-281.

Busse LB, Simpson JC, Cooper SD (2006) Relationships among nutrients algae and land use in urbanized southern California streams. *Canadian Journal of Fisheries and Aquatic Sciences* 63(12):2621-2638.

Carey RO, Migliaccio KW (2009) Contribution of wastewater treatment plant effluents to nutrient dynamics in aquatic systems: a review. *Environmental Management* 44(2):205-217.

Carlisle DM, Falcone J, Meador MR (2009) Predicting the biological condition of streams: Use of geospatial indicators of natural and anthropogenic characteristics of watersheds. *Environmental Monitoring and Assessment* 151:143-160.

Carroll GD, Jackson CR (2008) Observed relationships between urbanization and riparian cover, shredder abundance, and stream leaf litter standing crops. *Fundamental and Applied Limnology* 173(3):213-225.

Chadwick MA, Dobberfuhl DR, Benke AC, Hury AD, Suberkropp K, Thiele JE (2006) Urbanization affects stream ecosystem function by altering hydrology, chemistry, and biotic richness. *Ecological Applications* 16(5):1796-1807.

- Chalmers AT, Van Metre PC, Callender E (2006) The chemical response of particle-associated contaminants in aquatic sediments to urbanization in new England, USA. *Journal of Contaminant Hydrology* 91:4-25.
- Chang HJ (2007) Comparative streamflow characteristics in urbanizing basins in the Portland Metropolitan Area, Oregon, USA. *Hydrological Processes* 21:211-222.
- Changnon SA, Demissie M (1996) Detection of changes in streamflow and floods resulting from climate fluctuations and land use-drainage changes. *Climatic Change* 32(4):411-421.
- Chin A (2006) Urban transformation of river landscapes in a global context. *Geomorphology* 79:460-487.
- Cianfrani CM, Hession WC, Rizzo DM (2006) Watershed imperviousness impacts on stream channel condition in southeastern Pennsylvania. *Journal of the American Water Resources Association* 42(4):941-956.
- Colosimo MF, Wilcock PR (2007) Alluvial sedimentation and erosion in an urbanizing watershed, Gwynns Falls, Maryland. *Journal of the American Water Resources Association* 43(2):499-521.
- DeGasperi CL, Berge HB, Whiting KR, Burkey JJ, Cassin JL, Fuerstenberg RR (2009) Linking hydrologic alteration to biological impairment in urbanizing streams of the Puget Lowland, Washington, USA. *Journal of the American Water Resources Association* 45(2):512-533.
- Elmore AJ, Kaushal SS (2008) Disappearing headwaters: patterns of stream burial due to urbanization. *Frontiers in Ecology and the Environment* 6(6):308-312.
- Faulkner H, Edmonds-Brown V, Green A (2000) Problems of quality designation in diffusely polluted urban streams - the case of Pymme's Brook, North London. *Environmental Pollution* 109(1):91-107.
- Finkenbine JK, Atwater JW, Mavinic DS (2000) Stream health after urbanization. *Journal of the American Water Resources Association* 36(5):1149-1160.
- Franczyk J, Chang H (2009) The effects of climate change and urbanization on the runoff of the Rock Creek basin in the Portland metropolitan area, Oregon, USA. *Hydrological Processes* 23(6):805-815.
- Freeman MC, Marcinek PA (2006) Fish assemblage responses to water withdrawals and water supply reservoirs in piedmont streams. *Environmental Management* 38(3):435-450.
- Frenzel SA, Couvillion CS (2002) Fecal-indicator bacteria in streams along a gradient of residential development. *Journal of the American Water Resources Association* 33(1):265-273.
- Gibson CJ, Stadterman KL, States S, Sykora J (1998) Combined sewer overflows: a source of *Cryptosporidium* and *Giardia*?. *Water Science and Technology* 38(12):67-72.
- Gooseff MN, Hall RO, Tank JL (2007) Relating transient storage to channel complexity in streams of varying land use in Jackson Hole, Wyoming. *Water Resources Research* 43(1):1-10.
- Gregory KJ, Gurnell AM, Hill CT, Tooth S (1994) Stability of the pool-riffle sequence in changing river channels. *Regulated Rivers: Research and Management* 9:35-43.
- Groffman PM, Bain DJ, Band LE, Belt KT, Brush GS, Grove JM, Pouyat RV, Yesilonis IC, Zipperer WC (2003) Down by the riverside: urban riparian ecology. *Frontiers in Ecology and the Environment* 1(6):315-321.
- Groffman PM, Boulware NJ, Zipperer WC, Pouyat RV, Band LE, Colosimo MF (2002) Soil nitrogen cycle processes in urban riparian zones. *Environmental Science & Technology* 36(21):4547-4552.
- Groffman PM, Law NL, Belt KT, Band LE, Fisher GT (2004) Nitrogen fluxes and retention in urban watershed ecosystems. *Ecosystems* 7:393-403.
- Gücker B, Brauns M, Pusch MT (2006) Effects of wastewater treatment plant discharge on ecosystem structure and function of lowland streams. *Journal of the North American Benthological Society* 25(2):313-329.
- Han HJ, Allan JD, Scavia D (2009) Influence of climate and human activities on the relationship between watershed nitrogen input and river export. *Environmental Science & Technology* 43(6):1916-1922.
- Harbott EL, Grace MR (2005) Extracellular enzyme response to bioavailability of dissolved organic C in stream of varying catchment urbanization. *Journal of the North American Benthological Society* 24(3):588-601.
- Hardison EC, O'Driscoll MA, DeLoatch JP, Howard RJ, Brinson MM (2009) Urban land use, channel incision, and water table decline along Coastal Plain streams, North Carolina. *Journal of the American Water Resources Association* 45(4):1032-1046.
- Hatt BE, Fletcher TD, Walsh CJ, Taylor SL (2004) The influence of urban density and drainage infrastructure on the concentrations and loads of pollutants in small streams. *Environmental Management* 34(1):112-124.
- Helms BS, Schoonover JE, Feminella JW (2009) Assessing influences of hydrology, physicochemistry, and habitat on stream fish assemblages across a changing landscape. *Journal of the American Water Resources Association* 45(1):157-169.
- Herb WR, Janke B, Mohseni O, Stefan HG (2008) Thermal pollution of streams by runoff from paved surfaces. *Hydrological Processes* 22:987-999.
- Hession WC, Pizzuto JE, Johnson TE, Horwitz RJ (2003) Influence of bank vegetation on channel morphology in rural and urban watersheds. *Geology* 31(2):147-150.

- Hogg ID, Norris RH (1991) Effects of runoff from land clearing and urban development on the distribution and abundance of macroinvertebrates in pool areas of a river. *Australian Journal of Marine and Freshwater Research* 42(5):507-518.
- Horwitz FJ, Johnson TE, Overbeck PF, O'Donnell TK, Hession WC, Sweeney BW (2008) Effects of riparian vegetation and watershed urbanization on fishes in streams of the mid-Atlantic Piedmont (USA). *Journal of the American Water Resources Association* 44(3):724-741.
- Hur J, Schlautman MA, Karanfil T, Smink J, Song H, Klaine SJ, Hayes JC (2007) Influence of drought and municipal sewage effluents on the baseflow water chemistry of an upper Piedmont river. *Environmental Monitoring and Assessment* 132(1-3):171-187.
- Imberger SJ, Walsh CJ, Grace MR (2008) More microbial activity, not abrasive flow or shredder abundance, accelerates breakdown of labile leaf litter in urban streams. *Journal of the North American Benthological Society* 27(3):549-561.
- Jobling S, Tyler CR (2003) Endocrine disruption, parasites and pollutants in wild freshwater fish. *Parasitology* 126:S103-S108.
- Jones RC, Clark CC (1987) Impact of watershed urbanization on stream insect communities. *Journal of the American Water Resources Association* 23(6):1047-1055.
- Kaufmann PR, Larsen DP, Faustini JM (2009) Bed stability and sedimentation associated with human disturbances in Pacific Northwest streams. *Journal of the American Water Resources Association* 45(2):434-459.
- Kaushal SS, Groffman PM, Band LE, Shields CA, Morgan RP, Palmer MA, Belt KT, Swan CM, Findlay SEG, Fisher GT (2008) Interaction between urbanization and climate variability amplifies watershed nitrate export in Maryland. *Environmental Science & Technology* 42:5872-5878.
- Kaushal SS, Groffman PM, Likens GE, Belt KT, Stack WP, Kelly VR, Band LE, Fisher GT (2005) Increased salinization of fresh water in the northeastern United States. *Proceedings of the National Academy of Sciences USA* 102:13517-13520.
- Kemp SJ, Spotila JR (1997) Effects of urbanization on brown trout *Salmo trutta*, other fishes and macroinvertebrates in Valley Creek, Valley Forge, Pennsylvania. *American Midland Naturalist* 138(1):55-68.
- Kennen JG (1999) Relation of macroinvertebrate community impairment to catchment characteristics in New Jersey streams. *Journal of the American Water Resources Association* 35(4):939-955.
- King RS, Baker ME, Whigham DF, Weller DE, Jordan TE, Kazyak PF, Hurd MK (2005) Spatial considerations for linking watershed land cover to ecological indicators in streams. *Ecological Applications* 15(1):137-153.
- Kinouchi T (2007) Impact of long-term water and energy consumption in Tokyo on wastewater effluent: implications for the thermal degradation of urban streams. *Hydrological Processes* 21(9):1207-1216.
- Kinouchi T, Yagi H, Miyamoto M (2007) Increase in stream temperature related to anthropogenic heat input from urban wastewater. *Journal of Hydrology* 335(1-2):78-88.
- Kolpin DW, Furlong ET, Meyer MT, Thurman EM, Zaugg SD, Barber LB, Buxton HT (2002) Pharmaceuticals, hormones, and other organic wastewater contaminants in U.S. streams, 1999-2000: a national reconnaissance. *Environmental Science & Technology* 36:1202-1211.
- Lerner DN (2002) Identifying and quantifying urban recharge: a review. *Hydrogeology Journal* 10(1):143-152.
- Mahler BJ, Van Metre PC, Bashara TJ, Wilson JT, Johns DA (2005) Parking lot sealcoat: An unrecognized source of urban polycyclic aromatic hydrocarbons. *Environmental Science & Technology* 39(15):5560-5566.
- Maltby L, Boxall ABA, Forrow DM, Callow P, Betton CI (1995) The effects of motorway runoff on freshwater ecosystems: 2. Identifying major toxicants. *Environmental Toxicology and Chemistry* 14(6):1093-1101.
- Meyer JL, Wallace JB (2001) Lost linkages and lotic ecology: rediscovering small streams. Pp. 295-317 In: Press MC, Huntly NJ, Levin S (Eds). *Ecology: Achievement and Challenge*. Blackwell Science, Oxford UK.
- Meyer SC (2005) Analysis of base flow trends in urban streams, northeastern Illinois, USA. *Hydrogeology Journal* 13(5-6):871-885.
- Miller W, Boulton A (2005) Managing and rehabilitating ecosystem processes in regional urban streams in Australia. *Hydrobiologia* 552(1):121-133.
- Miltner RJ, White D, Yoder C (2004) The biotic integrity of stream in urban and suburbanizing landscapes. *Landscape and Urban Planning* 69:87-100.
- Moore AA, Palmer MA (2005) Invertebrate biodiversity in agricultural and urban headwater streams: Implications for conservation and management. *Ecological Applications* 15(4):1169-1177.
- Morgan RP, Cushman SF (2005) Urbanization effects on stream fish assemblages in Maryland, USA. *Journal of the North American Benthological Society* 24(3):643-655.
- Morley SA, Karr JR (2002) Assessing and restoring the health of urban streams in the Puget Sound basin. *Conservation Biology* 16(6):1498-1509.
- Nedeau EJ, Merritt RW, Kaufman MG (2003) The effect of an industrial effluent on an urban stream benthic community: water quality vs. habitat quality. *Environmental Pollution* 123(1):1-13.
- Nelson KC, Palmer MA (2007) Stream temperature surges under urbanization and climate change: Data, models, and responses. *Journal of the American Water Resources Association* 43(2):440-452.

- Nelson KC, Palmer MA, Pizzuto JE, Moglen GE, Angermeier PL, Hilderbrand RH, Dettinger M, Hayhoe K (2009) Forecasting the combined effects of urbanization and climate change on stream ecosystems: from impacts to management options. *Journal of Applied Ecology* 46:154-163.
- Newall P, Walsh CJ (2005) Response of epilithic diatom assemblages to urbanization influences. *Hydrobiologia* 532:53-67.
- Ometo JPHB, Martinelli LA, Ballester MV, Gessner A, Krusche AV, Victoria RL, Williams M (2000) Effects of land use on water chemistry and macroinvertebrates rates in two streams of the Piracicaba river basin, south-east Brazil. *Freshwater Biology* 44(2):327-337.
- Ortiz JD, Puig MA (2007) Point source effects on density, biomass and diversity of benthic macroinvertebrates in a mediterranean stream. *River Research and Applications* 23(2):155-170.
- Palmer MA, Lettenmaier DP, Poff NL, Postel SL, Richter B, Warner R (2009) Climate change and river ecosystems: protection and adaptation options. *Environmental Management* 44:1053-1068.
- Paul MJ, Meyer JL (2001) Streams in the urban landscape. *Annual Review of Ecology and Systematics* 32:333-365.
- Paul MJ, Meyer JL, Couch CA (2006) Leaf breakdown in stream differing in catchment land use. *Freshwater Biology* 51(9):1684-1695.
- Pedersen ER, Perkins MA (1986) The use of benthic invertebrate data for evaluating impacts of urban runoff. *Hydrobiologia* 139:13-22.
- Pennington DN, Hansel J, Blair RB (2008) The conservation value of urban riparian areas for landbirds during spring migration: Land cover, scale, and vegetation effects. *Biological Conservation* 141(5):1235-1248.
- Phillips P, Chalmers A (2009) Wastewater effluent, combined sewer overflows, and other sources of organic compounds to Lake Champlain. *Journal of the American Water Resources Association* 45(1):45-57.
- Pinkney AE, Harshbarger JC, May EB, Reichert WL (2004) Tumor prevalence and biomarkers of exposure and response in brown bullhead (*Ameiurus nebulosus*) from the Anacostia River, Washington, DC and Tuckahoe River, Maryland, USA. *Environmental Toxicology and Chemistry* 23(3):638-647.
- Pizzuto JE, Hession WC, McBride M (2000) Comparing gravel-bed rivers in paired urban and rural catchments of southeastern Pennsylvania. *Geology* 28(1):79-82.
- Poff NL, Bledsoe BP, Cuhacyan CO (2006) Hydrologic variation with land use across the contiguous United States: Geomorphic and ecological consequences for stream ecosystems. *Geomorphology* 79:264-285.
- Raciti SM, Groffman PM, Fahey TJ (2008) Nitrogen retention in urban lawns and forests. *Ecological Applications* 18(7):1615-1626.
- Riley SPD, Busteed GT, Kats LB, Vandergon TL, Lee LFS, Dagit RG, Kerby JL, Fisher RN, Sauvajot RM (2005) Effects of urbanization on the distribution and abundance of amphibians and invasive species in southern California streams. *Conservation Biology* 19(6):1894-1907.
- Roberts ML, Bilby RE (2009) Urbanization alters litterfall rates and nutrient inputs to small Puget Lowland streams. *Journal of the North American Benthological Society* 28(4):941-954.
- Rose S (2007) The effects of urbanization on the hydrochemistry of base flow within the Chattahoochee River Basin (Georgia, USA). *Journal of Hydrology* 341(1-2):42-54.
- Rose S, Peters NE (2001) Effects of urbanization on streamflow in the Atlanta area (Georgia, USA): a comparative hydrological approach. *Hydrological Processes* 15(8):1441-1457.
- Roy AH, Dybas AL, Fritz KM, Lubbers HR (2009) Urbanization affects the extent and hydrologic permanence of headwater streams in a midwestern US metropolitan area. *Journal of the North American Benthological Society* 28(4):911-928.
- Roy AH, Freeman BJ, Freeman MC (2007) Riparian influences on stream fish assemblage structure in urbanizing streams. *Landscape Ecology* 22:385-402.
- Roy AH, Freeman MC, Freeman BJ, Wenger SJ, Ensign WE, Meyer JL (2005) Investigating hydrologic alteration as a mechanism of fish assemblage shifts in urbanizing streams. *Journal of the North American Benthological Society* 24(3):656-678.
- Roy AH, Rosemond AD, Paul MJ, Leigh DS, Wallace JB (2003) Stream macroinvertebrate response to catchment urbanisation (Georgia, USA). *Freshwater Biology* 48:329-346.
- Roy AH, Shuster WD (2009) Assessing impervious surface connectivity and applications for watershed management. *Journal of the American Water Resources Association* 45(1):198-209.
- Runge JP, Peterson JT, Martin CR (2008) Survival and dispersal of hatchery-raised rainbow trout in a river basin undergoing urbanization. *North American Journal of Fisheries Management* 28(3):745-757.
- Schiff R, Benoit G (2007) Effects of impervious cover at multiple spatial scales on coastal watershed streams. *Journal of the American Water Resources Association* 43(3):712-730.
- Schoonover JE, Lockaby BG, Helms BS (2006) Impacts of land cover on stream hydrology in the west Georgia piedmont, USA. *Journal of Environmental Quality* 35(6):2123-2131.
- Scoggins M, McClintock NL, Gosselink L, Bryer P (2007) Occurrence of polycyclic aromatic hydrocarbons below coal-tar-sealed parking lots and effects on stream benthic macroinvertebrate communities. *Journal of the North American Benthological Society* 26(4):694-707.

- Scott MC (2006) Winners and losers among stream fishes in relation to land use legacies and urban development in the southeastern US. *Biological Conservation* 127:301-309.
- Shoffner D, Royall D (2008) Hydraulic habitat composition and diversity in rural and urban stream reaches of the North Carolina Piedmont (USA). *River Research and Applications* 24:1082-1103.
- Singer GA, Battin TJ (2007) Anthropogenic subsidies alter stream consumer-resource stoichiometry, biodiversity, and food chains. *Ecological Applications* 17(2):376-389.
- Smith RF, Lamp WO (2008) Comparison of insect communities between adjacent headwater and main-stem streams in urban and rural watersheds. *Journal of the North American Benthological Society* 27(1):161-175.
- Snyder CD, Young JA, Villella R, Lemarie DP (2003) Influences of upland and riparian land use patterns on stream biotic integrity. *Landscape Ecology* 18:647-664.
- Sonneman JA, Walsh CJ, Breen PF, Sharpe AK (2001) Effects of urbanization on streams of the Melbourne region, Victoria, Australia. II. Benthic diatom communities. *Freshwater Biology* 46:553-565.
- Sponseller RA, Benfield EF, Valett HM (2001) Relationships between land use, spatial scale and stream macroinvertebrate communities. *Freshwater Biology* 46(10):1409-1424.
- Stepenuck KF, Crunkilton RL, Wang L (2002) Impacts of urban landuse on macroinvertebrate communities in southeastern Wisconsin streams. *Journal of the American Water Resources Association* 38(4):1041-1051.
- Stranko SC, Hilderbrand RH, Morgan RP II, Staley MW, Becker AJ, Roseberry-Lincoln A, Perry ES, Jacobson PT (2008) Brook trout declines with land cover and temperature changes in Maryland. *North American Journal of Fisheries Management* 28:1223-1232.
- Taulbee WK, Nietch CT, Brown D, Ramakrishnan B, Tompkins MJ (2009) Ecosystem consequences of contrasting flow regimes in an urban effects stream mesocosm study. *Journal of the American Water Resources Association* 45(4):907-927.
- Taylor SL, Roberts SC, Walsh CJ, Hatt BE (2004) Catchment urbanisation and increased benthic algal biomass in streams: Linking mechanisms to management. *Freshwater Biology* 49:835-851.
- Thompson A, Wilson T, Norman J, Gemechu AL, Roa-Espinosa A (2008) Modeling the effect of summertime heating on urban runoff temperature. *Journal of the American Water Resources Association* 44(6):1548-1563.
- Thompson AM, Kim K, Vandermuss AJ (2008) Thermal characteristics of stormwater runoff from asphalt and sod surfaces. *Journal of the American Water Resources Association* 44(5):1325-1336.
- Trimble SW (1997) Stream channel erosion and change resulting from riparian forests. *Geology* 25:467-469.
- U.S. EPA (1988) Ambient Water Quality Criteria for Chloride U.S. Environmental Protection Agency, Washington DC. EPA 440/5-88-001.
- U.S. EPA (2000) Progress in Water Quality: An Evaluation of the National Investment in Municipal Wastewater Treatment. U.S. Environmental Protection Agency, Washington DC. EPA-832-R-00-008. 452 pp.
- U.S. EPA (2004) Report to Congress: Impacts and Controls of CSOs and SSOs. U.S. Environmental Protection Agency, Office of Water, Washington DC. EPA 833-R-04-001.
- Utz RM, Hilderbrand RH, Boward DM (2009) Identifying regional differences in threshold responses of aquatic invertebrates to land cover gradients. *Ecological Indicators* 9:556-567.
- Vajda AM, Barber LB, Gray JL, Lopez EM, Woodling JD, Norris DO (2008) Reproductive disruption in fish downstream from an estrogenic wastewater effluent. *Environmental Science & Technology* 42(9):3407-3414.
- Walsh CJ (2004) Protection of in-stream biota from urban impacts: minimise catchment imperviousness or improve drainage design?. *Marine and Freshwater Research* 55(3):317-326.
- Walsh CJ (2006) Biological indicators of stream health using macroinvertebrate assemblage composition: A comparison of sensitivity to an urban gradient. *Marine and Freshwater Research* 57:37-47.
- Walsh CJ, Fletcher TD, Ladson AR (2005) Stream restoration in urban catchments through redesigning stormwater systems: looking to the catchment to save the stream. *Journal of the North American Benthological Society* 24(3):690-705.
- Walsh CJ, Roy AH, Feminella JW, Cottingham PD, Groffman PM, Morgan RP II (2005) The urban stream syndrome: Current knowledge and the search for a cure. *Journal of the North American Benthological Society* 24(3):706-723.
- Walsh CJ, Waller KA, Gehling J, MacNally R (2007) Riverine invertebrate assemblages are degraded more by catchment urbanisation than by riparian deforestation. *Freshwater Biology* 52:574-587.
- Walters DM, Leigh DS, Freeman MC, Freeman BJ, Pringle CM (2003) Geomorphology and fish assemblages in a Piedmont river basin, USA. *Freshwater Biology* 48:1950-1970.
- Walters DM, Roy AH, Leigh DS (2009) Environmental indicators of macroinvertebrate and fish assemblage integrity in urbanizing watersheds. *Ecological Indicators* 9(6):1222-1233.

Wang L, Kanehl P (2003) Influences of watershed urbanization and instream habitat on macroinvertebrates in cold water streams. *Journal of the American Water Resources Association* 39:1181-1196.

Wang L, Lyons J, Kanehl P (2003) Impacts of urban land cover on trout streams in Wisconsin and Minnesota. *Transactions of the American Fisheries Society* 132:825-839.

Wang LZ, Lyons J, Kanehl P (2001) Impacts of urbanization on stream habitat and fish across multiple spatial scales. *Environmental Management* 28(2):255-266.

Watkinson AJ, Murby EJ, Kolpin DW, Costanzo SD (2009) The occurrence of antibiotics in an urban watershed: From wastewater to drinking water. *Science of the Total Environment* 407(8):2711-2723.

Wenger SJ, Peterson JT, Freeman MC, Freeman BJ, Homans DD (2008) Stream fish occurrence in response to impervious cover, historic land use, and hydrogeomorphic factors. *Canadian Journal of Fisheries and Aquatic Sciences* 65(7):1250-1264.

Wenger SJ, Roy AH, Jackson CR, Bernhardt ES, Carter TL, Filoso S, Gibson CA, Hession WC, Kaushal SS, Marti E, Meyer JL, Palmer MA, Paul MJ, Purcell AH, Ramirez A, Rosemond AD, Schofield KA, Sudduth EB, Walsh CJ (2009) Twenty-six key research questions in urban stream ecology: an assessment of the state of the science. *Journal of the North American Benthological Society* 28(4):1080-1098.

Winter JG, Duthie HC (2000) Epilithic diatoms as indicators of stream total N and total P concentration. *Journal of the North American Benthological Society* 19(1):32-49.

Wollheim WM, Pellerin BA, Vorosmarty CJ, Hopkinson CS (2005) N retention in urbanizing headwaters catchments. *Ecosystems* 8:871-884.

Wolman MG (1967) A cycle of sedimentation and erosion in urban river channels. *Geografiska Annaler* 49(A):385-395.

Woodcock TS, Hurn AD (2005) Leaf litter processing and invertebrate assemblages along a pollution gradient in a Maine (USA) headwater stream. *Environmental Pollution* 134(3):363-375.

Woodling JD, Lopez EM, Maldonado TA, Norris DO, Vajda AM (2006) Intersex and other reproductive disruption of fish in wastewater effluent dominated Colorado streams. *Comparative Biochemistry and Physiology, Part C* 144(1):10-15.

Last updated on Tuesday, July 31, 2012

Exhibit C

EPA Publication #2

STORMWATER BEST MANAGEMENT PRACTICE:
Coal-Tar Sealcoat, Polycyclic Aromatic
Hydrocarbons, and Stormwater Pollution
EPA 833-F-12-004
November 2012

<http://www.epa.gov/npdes/pubs/coaltar.pdf>

Minimum Measure

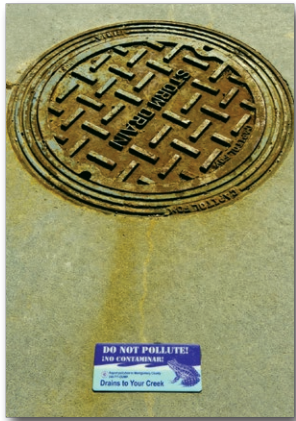
Pollution Prevention/Good Housekeeping

What Is Coal-Tar Sealcoat?

Coal-tar sealcoat is a type of sealant used to maintain and protect driveway and parking lot asphalt pavement. Coal-tar sealcoat typically contains 20 to 35% coal tar pitch, a byproduct of the steel manufacturing industry, which is 50% or more polycyclic aromatic hydrocarbons (PAHs) by weight.

Could Coal-Tar Sealcoat Be a Concern for Stormwater?

Studies found that PAHs are significantly elevated in stormwater flowing from parking lots and other areas where coal-tar sealcoats were used as compared to stormwater flowing from areas not treated with the sealant. For example, one study found the amount of PAHs in stormwater runoff was 65 times higher from parking lots sealed with coal-tar sealant vs. stormwater from unsealed parking lots. Another study found that coal-tar sealcoat is the largest source of PAHs to 40 urban lakes (Van Metre and Mahler, 2010). PAHs from coal-tar sealcoat may accumulate in the sediment of stormwater ponds,



requiring expensive disposal of the dredged PAH-contaminated sediment.

PAHs are of concern because of their harmful impacts on humans and the environment. They are persistent organic compounds, and several PAHs are known or probable human carcinogens and toxic to aquatic life.

What Are States and Municipalities Doing to Address PAHs from Coal-Tar Sealcoat?

Several states and cities have taken action to address PAHs from coal-tar sealcoat. The following are some notable examples:

- The city of Austin, Texas banned the sale and use of coal-tar containing pavement sealants in 2005: <http://austintexas.gov/department/coal-tar>
- The District of Columbia banned the sale and use of coal-tar sealcoat in 2009: <http://green.dc.gov/coalartaban>
- In 2009, Minnesota restricted state agencies from purchasing undiluted coal tar-based sealant and directed its Pollution Control Agency to study the environmental effects of coal tar-based sealants and to develop management guidelines: www.pca.state.mn.us/index.php/water/water-types-and-programs/stormwater/municipal-stormwater/restriction-on-coal-tar-based-sealants.html
- Washington State banned the sale of coal-tar pavement sealants on January 1, 2012 and banned the use of such sealants after July 1, 2013: <https://fortress.wa.gov/ecy/publications/summarypages/1104021.html>



Alternatives to Coal-Tar Sealcoat

Pavement options such as pervious concrete, permeable asphalt and paver systems do not require sealants. These types of pavements allow for stormwater to naturally infiltrate, resulting in decreased runoff.

Stormwater Best Management Practice:

Coal-Tar Sealcoat, Polycyclic Aromatic Hydrocarbons, and Stormwater Pollution

For More Information

For more information you can watch EPA's webinar *Stormwater, Coal-Tar Sealcoat and Polycyclic Aromatic Hydrocarbons* available at: http://cfpub2.epa.gov/npdes/courseinfo.cfm?program_id=0&outreach_id=645&schedule_id=1169.

For information on assessing the toxicity of PAHs in sediment see: www.epa.gov/nheerl/download_files/publications/PAHESB.pdf from EPA's Office of Research and Development.

Additionally, you can visit the USGS webpage on PAHs and coal-tar-based sealcoat: <http://tx.usgs.gov/coring/allthingssealcoat.html>.

References

Mahler, B.J.; Van Metre, P.C.; Crane, J.L.; Watts, A.W.; Scoggins, M.; Williams, E.S., Coal-tar-based pavement sealcoat and PAHs: Implications for the environment, human health, and stormwater management. *Environ. Sci. Technol.*, 2012.

Van Metre, P.C.; Mahler, B.J., Contribution of PAHs from coal-tar pavement sealcoat and other sources to 40 U.S. lakes. *Sci. of the Total Environ.*, 2010, v.409, 334–344.

Scoggins, M.; McClintock, N.L.; Gosselink, L.; Bryer, P., Occurrence of polycyclic aromatic hydrocarbons below coal-tar-sealed parking lots and effects on stream benthic macroinvertebrate communities. *Journal of the North American Benthological Society*, 2007, 26(4):694–707.

Mahler, B.J.; Van Metre, P.C.; Bashara, T.J.; Wilson, J.T.; Johns, D.A., Parking lot sealcoat: An unrecognized source of urban PAHs. *Environ. Sci. Technol.* 2005, 39, (15), 5560–5566.

EPA's Integrated Risk Information System (IRIS):
www.epa.gov/IRIS/

Exhibit D

**PUBLICATIONS OF SCIENTIFIC STUDIES OF
REFINED TAR-BASED PAVEMENT SEALERS
(RTS) IN THE ENVIRONMENT**

**SPONSORED BY THE PAVEMENT COATINGS
TECHNOLOGY COUNCIL
(REV. APRIL 2014)**



PUBLICATIONS OF SCIENTIFIC STUDIES OF TAR-BASED SEALANTS IN THE ENVIRONMENT

SPONSORED BY THE PAVEMENT COATINGS TECHNOLOGY COUNCIL

(REV. APRIL 2014)

Peer Reviewed Papers in Science Journals:

O'Reilly, K., Ahn, S., Pietari, J. and Boehm, P. (2014). Use of Receptor Models to Evaluate Sources of PAHs in Sediments. *Polycyclic Aromatic Compounds*. Awaiting DOI.

O'Reilly, K. T., Pietari, J. and Boehm, P. D. (2014), Parsing pyrogenic polycyclic aromatic hydrocarbons: Forensic chemistry, receptor models, and source control policy. *Integr Environ Assess Manag*, 10:279–285.

O'Reilly, K., Pietari, J. and Boehm, P. (2012). A Forensic Assessment of Coal Tar Sealants as a Source of Polycyclic Aromatic Hydrocarbons in Urban Sediments. *Environmental Forensics*, 13:185-196.

DeMott, R.P., Gauthier, T.D., Wiersema, J.M. and Crenson, G. (2010). PAHs in Austin Sediments after a Ban on Pavement Sealers. *Environmental Forensics*, 11:4, 372-382.

Post-Publication Reviews Published in Science Journals (Including Submitted Reviews):

O'Reilly, K. (2014). Published results do not support the author's hypothesis. Letter to the Editor of *Archives of Environmental Contamination and Toxicology*. Submitted.

Gauthier, T.D. (2014). Comment on "Coal-tar pavement sealant use and polycyclic aromatic hydrocarbon contamination in urban stream sediments." *Physical Geography*. Submitted.

O'Reilly, Kirk (2014). Reply to the response to letter on "Coal-Tar-Based Sealcoated Pavement: A Major PAH Source to Urban Stream Sediments." *Environmental Pollution*, DOI: 10.1016/j.envpol.2014.03.036

O'Reilly, Kirk (2013). Article Title Misstates the Role of Pavement Sealers. Letter to the Editor of *Environmental Pollution*, Published online Dec. 26, 2013 at <http://dx.doi.org/10.1016/j.envpol.2013.11.029>

Magee, Brian and Janet Keating-Connolly (2013). Comment on "Cancer Risk from Incidental Ingestion Exposures to Pahs Associated with Coal-Tar-Sealed Pavement". *Environmental Science & Technology*. Published online Dec. 11, 2013 at DOI: [10.1021/es404184q]

O'Reilly, K., Pietari, J. and Boehm, P. (2011). Comment on "PAHs Underfoot: Contaminated Dust from Coal-Tar Sealcoated Pavement is Widespread in the U.S." *Environ. Sci. Technol.*, 2011, 45 (7), pp 3185–3186

DeMott, R.P.; Gauthier, T.D. (2006) Comment on "Parking lot sealcoat: An unrecognized source of urban polycyclic aromatic hydrocarbons." *Environ. Sci. Technol.* 2006, 40(11), 3657-3658

Post-Publication Peer Review Reports:

O'Reilly, K. (2014). *Technical Evaluation of Van Metre and Mahler 2010*. Report prepared for PavementCouncil.org by Exponent. Will be available at <http://www.pavementcouncil.org/scientific-journals> pending submission to government agencies.

Gauthier, T. (2014). *Review of Pavlowsky 2013*. Report prepared for PavementCouncil.org by Environ. Will be available at <http://www.pavementcouncil.org/scientific-journals> pending publication of formal comment.

Magee, B. and Keating-Connolly, J. (2013). *Peer Review of Coal-Tar-Sealed Pavement Risk Assessment*. Report prepared for PavementCouncil.org by ARCADIS. Available at <http://www.pavementcouncil.org/scientific-journals>. Condensed version published as a comment in Environmental Science & Technology (Magee and Keating-Connolly, 2013).

DeMott, Robert, Thomas Gauthier and Michael Masonjones (2013). *Volatilization of PAHs from Coal-Tar-Sealed Parking Lots*. Report prepared for PavementCouncil.org by Environ. Available at <http://www.pavementcouncil.org/scientific-journals>.

Environ International (2010). Review of "Coal-Tar-Based Parking Lot Sealcoat: An Unrecognized Source of PAH to Settled House Dust" by Mahler et al., published in Environmental Science and Technology, January 2010. Report prepared for PavementCouncil.org by Environ. Available at <http://www.pavementcouncil.org/scientific-journals>.

Submissions to Government Authorities:

PCTC (2014). The Great Lakes Coal Tar Sealcoat PAH Reduction Project: Comments and Recommendations of the Pavement Coatings Technology Council. Comments submitted to the EPA Great Lakes Program Office and several state agencies located within EPA Region 5. January 21, 2014. Available at <http://www.pavementcouncil.org/blog>

Information Quality Act Requests for Correction of Information Under the U.S. Geological Survey Information Quality Guidelines, available at http://www.usgs.gov/info_qual/

- May 15, 2013: Topic – There is No Scientific Basis for the USGS to Claim that RTS is a Major Source of PAHs in U.S. Sediments
- May 31, 2013: Topic – The USGS is Using Inaccurate and Misleading Photographs of Fish with Skin Tumors as a Scare Tactic to Promote Advocacy Goals
- September 17, 2013: Topic – USGS claims of health risks are based on a "risk assessment" that exaggerates exposure, selects data for inclusion or omission without explanation, fails to consider the many other sources of PAHs, does not use best-available toxicity estimates, and many other flaws of both omission and commission.

DeMott, Robert (2004). Review and Evaluation of Coal Tar Emulsion Sealers and Potential Runoff Transport of Polycyclic Aromatic Hydrocarbons. Report prepared for Pavement Coatings Technology Center of the University of Nevada-Reno by Environ, submitted to the City of Austin, TX January 8, 2004. Available at <http://www.pavementcouncil.org/scientific-journals>.



Articles Published in Magazines for Professionals:

LeHuray, A. (2014). Understanding Sealer Basics. *Pavement Maintenance Magazine* March 2014 (published online Feb. 25, 2014).

Pietari, J., O'Reilly, K. and Boehm, P. (2010). Polycyclic Aromatic Hydrocarbons in Stormwater and Urban Sediments: A Review. *Stormwater Magazine*. September 2010.

Presentations at Recent Scientific Meetings:

LeHuray, A. and Beatty, K. (2014). Key Science Issues to be Considered in the IRIS Hazard Assessment of the Index Compound for the PAHs, Benzo(a)Pyrene. Presentation at the NIOSH 2014 Toxicology and Risk Assessment Conference (TRAC), Cincinnati, OH April 7-10, 2014.

Magee, B. and Keating-Connolly, Janet (2013). Research-Based Input Parameters for Risk Assessment of Coal-Tar-Based Pavement Sealants. Abstract accepted for presentation at the 34th annual meeting of the Society of Environmental Toxicology and Chemistry (SETAC) Nashville, TN November 17-21, 2013.

O'Reilly, K., Mudge, S. and Boehm, P. (2013). Receptor Models for PAH Source Characterization: Opportunities and Limitations. Presentation at the 34th annual meeting of the Society of Environmental Toxicology and Chemistry (SETAC) Nashville, TN November 17-21, 2013.

Pietari, J., Ahn, S., O'Reilly, K. and Boehm, P. (2013) Parsing Pyrogenic PAHs—Urban Background or Refined Tar Products? Presentation at the 29th Annual International Conference on Soils, Sediments, Water, and Energy, October 21-24, 2013, Amherst, MA.

O'Reilly, K., Ahn, S., Pietari, J. and Boehm, P. (2013). Use of Receptor Models to Evaluate Sources of PAHs in Sediments. Presentation at the 24th meeting of the International Symposium on Polycyclic Aromatic Compounds (ISPAC 2013) in Corvallis, Oregon USA September 8-12, 2013.

Magee, B. and Keating-Connolly, Janet (2013). Risk Assessment for Coal Tar-Based Pavement Sealants. Presentation at the 24th meeting of the International Symposium on Polycyclic Aromatic Compounds (ISPAC 2013) in Corvallis, Oregon USA September 8-12, 2013.

O'Reilly K, Pietari J and Boehm P. (2012). Use of Alkyl Polycyclic Aromatic Hydrocarbon Data in Evaluating the Contribution of Pavement Sealers to Urban Sediments. Abstract and Platform Presentation at the 2012 annual meeting of the *Society of Environment Toxicology and Chemistry (SETAC)*.

Feldpausch, A. and Schoof, R. (2012) Development of a residence-specific, health-based screening criterion for benzo(a)pyrene in indoor dust. Abstract of presentation at the 2012 annual meeting of the *International Society of Exposure Science*.

LeHuray, A.P. (2012). Bans of Pavement Sealers Have Demonstrably Absent Environmental Risk Reduction Benefits but Foreseeable and Knowable Economic Harms. Managing for a Healthy and Sustainable Chesapeake Bay: Human and Ecological Risk: *Joint Meeting of the National Capital Area Chapters of the Society of Environment Toxicology and Chemistry (SETAC) and the Society for Risk Analysis (SRA)*. College Park, MD, April 23-24, 2012

O'Reilly, K., Pietari, J. and Boehm, P. (2011). Managing Risks: Will banning pavement sealers have the desired effect? Abstract and Poster Presented at the 32nd Annual Meeting of the *Society of Environment Toxicology and Chemistry (SETAC)*, Boston, Nov. 2011.



DeMott, R.P. and Gauthier, T.D. (2011). Use of Mass Balance Bounding Estimates and Sensitivity Analysis to Prioritize PAH Inputs in Urban Systems. Abstract and Poster Presented at the 32nd Annual Meeting of the Society of Environment Toxicology and Chemistry (SETAC), Boston, Nov. 2011.

Pietari, J., O'Reilly, K. and Boehm, P. (2011). Environmental Forensics for PAH Source Management: Pavement Sealants and Sediments. Abstract and Poster Presented at the Sixth International Conference on Remediation of Contaminated Sediments, New Orleans, LA Feb. 2011.

O'Reilly, K., Pietari, J. and Boehm, P. (2010). PAHs in Urban Sediments: Forensics Approaches for Assessing the Relative Contribution of Atmospheric Deposition. Abstract and Platform Presentation at the 31st Annual Meeting of the Society of Environment Toxicology and Chemistry (SETAC), Seattle, Nov. 2010.

Gauthier, T.D. and DeMott, R.P. (2008). Analysis of PAH Concentrations Detected in Austin Texas Stream Sediments Following a Ban on the Use of Coal Tar Sealers. Abstract of Presentation Made at the 29th Annual Meeting of the Society of Environmental Toxicology and Chemistry (SETAC), Tampa, Nov. 2008.



Exhibit E

TECHNICAL EVALUATION OF VAN METRE AND MAHLER (2010)

Prepared by
Kirk T. O'Reilly, Ph.D. J.D.
Exponent, Inc.

March 25, 2014



E X T E R N A L M E M O R A N D U M

TO: Anne LeHuray
FROM: Kirk O'Reilly
DATE: March 25, 2014

SUBJECT: Technical Evaluation of Van Metre and Mahler 2010

Exponent has been evaluating the U.S. Geological Survey's (USGS) research concerning the potential role of refined tar sealer (RTS) since 2009. Mahler, Van Metre and their colleagues have published a series of papers promoting "the Mahler hypothesis" that proposes that RTS is a major source of polycyclic aromatic hydrocarbons (PAHs) in urban sediments. As described in O'Reilly et al 2012, there are number of technical issues that raise questions about the conclusions presented in Mahler et al 2005, Van Metre et al 2009, and Van Metre and Mahler 2010. The 2010 paper introduces the application of EPA's chemical mass balance (CMB) model to assess the hypothesis that RTS is the dominant source of PAHs in the sediments of 40 urban lakes. Because the authors described the results of only 4 of about 200 model runs, our initial evaluation of Van Metre and Mahler 2010 was incomplete. In response to a Freedom of Information Act (FOIA) request, the USGS provided sufficient data to recreate these four model runs, but not the complete CMB output files for any of the runs.

The purpose of this memorandum is to discuss a range of technical issues concerning Van Metre and Mahler's application of CMB.

Key findings include:

- CMB can match mixtures of the proposed sources to sediment PAH profiles whether or not a RTS source term is included.
- When the RTS source profile is changed from one based on parking lot dust to another based on the chemical analysis of RTS, CMB eliminates it as a source from most of the sediments samples considered.

The evaluation indicates that the results of CMB do not provide support for the Mahler hypothesis. Because other researchers (Crane 2013; Witter et al 2014) have begun to apply the methods described in Van Metre and Mahler 2010, the USGS should consider retracting the article.

Comments:

1. The validity of CMB depends on how closely the inputs meet the strict assumptions underlying the model.

The following summarizes the assumptions underlying CMB (Coulter 2004) and why Van Metre and Mahler (2010) fails to address them. Some points are discussed in more detail in subsequent sections.

- I. The composition of each source emission profile is consistent over the period model.
 - a. No site-specific emission data was used.
 - b. The source profiles used were averages of published data. There was no evaluation of how representative they were to actual sources.
 - c. The variability among the literature source profiles was taken into consideration.
 - d. The composition of the emission sources used are known not be consistent and change to due to fuel, temperature, oxygen availability and other combustion process conditions (Lima et al 2005).
- II. Chemical species do not react with each other or the environment.
 - a. PAH react quickly in the atmosphere so emission chemistry does not represent depositional chemistry (Galarneau 2008; Lima et al 2005). This factor was ignored.
 - b. Sealers weather resulting in changes in their PAH profile (O'Reilly et al 2012). This was considered.
 - c. Together, this results in a greater chance of identifying the sealers as sources.
- III. All sources that contribute significantly to the receptors have been identified and their profile is known.
 - a. A limited set of sources was considered. Evaluation of site-specific sources was not conducted.
 - b. As noted there is great uncertainty in whether the source profiles used as input represent actual sources.
- IV. The composition of each source is linearly independent or other sources.
 - a. The results present indicate a positive relationship between the mass sourced by sealers and the mass sourced by other sources ($R^2=0.63$). Samples with more sealer also had more other sources.
 - b. This is the opposite of the result expected if sealers were actually a source.

- V. Measurement uncertainties are random, uncorrelated, and normally distributed.
- a. This assumption could not be met with most of the source data so a generic uncertainty factor of 40% was applied (Li et al 2003).
 - b. This value was based typical analytical precision and ignores the variability in the chemical profiles of potential sources.
 - c. Profiles based on a limited set of published data are not expected to be random, uncorrelated, or normally distributed.

2. CMB allows calculations of potential relative source contributions only if the actual sources are known.

This statement is based on the simple mathematical concept that one can only calculate an unknown when there are a sufficient numbers of knowns. Without independent verification that the source inputs used are appropriate and sufficient, CMB output cannot be used to verify the contribution of a given source.

3. Discussion of only 4 of 200 model runs provides an incomplete picture the results of the CMB evaluation.

VanMetre and Mahler (2010) states that 200 CMB model runs were conducted, but only four were discussed in detail. While requested, neither the input parameters nor model output of the others 196 runs have been provided. As highlighted in the following comments, model output based on conditions that should have been run by the authors leads to results that are significantly different than those claimed in the article.

Many of the source profiles used by VanMetre and Mahler are from Li et al (2003). As demonstrated by Li and a subsequent paper (Bzdusek et al. 2004), model outputs are highly dependent on model inputs (Figure 3-1). A discussion of receptor modeling requires presentation of the full range of results.

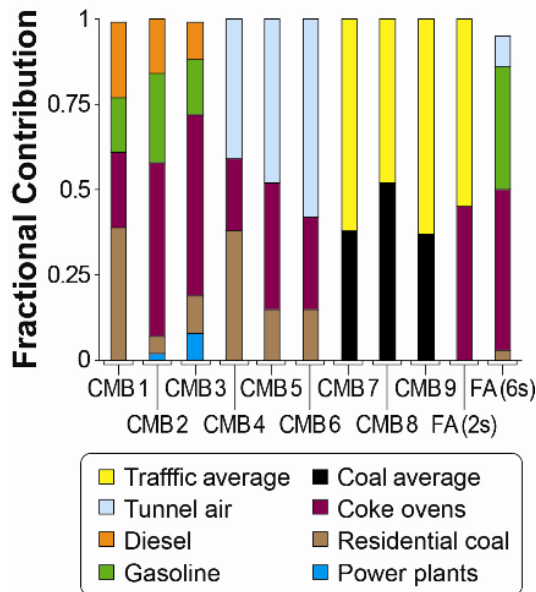


Figure 3-1: Fractional contribution of various PAH source types to sediment of Lake Calumet (Chicago, Illinois) based on nine CMB and two Factor Analysis model runs. Data from Li et al. 2003 and Bzdusek et al. 2004. The range of results highlights the sensitivity of receptor models to the specific inputs.

To resolve this gap, source input profiles used by Van Metre and Mahler were obtained through a FOIA request. Using CMB, we were able to recreate the published Van Metre and Mahler results for the four model runs, A through D, published in 2010. CMB was then rerun either excluding the RTS source or replacing it with an RTS source profile based on another USGS study (Selbig 2009). While Selbig’s results were for unfiltered runoff, the low-solubility PAHs should be associated with the particles and thus comparable to the parking dust samples used by Van Metre and Mahler (O’Reilly et al. 2012).

Table 4-1 compares the three model runs. The coefficient of determination, R^2 , is the average of the 120 samples. The measured and calculated total PAH concentrations for all 120 samples are shown in Figure 4-1. To compare the goodness of fit between the measured and modeled concentrations, Pearson correlation coefficients, r , were calculated using the results of the 120 sediment samples. The r for each of the three models exceeded 0.998. Note the difference in R^2 between those listed in Table 4-1, which are based on the fitting of individual PAHs within each sample, and r in Figure 4-1 which is fitting the total PAH concentrations.

Table 4-1: Comparison of the average results for three CMB model runs. All input conditions are consistent with Van Metre and Mahler 2010, except for the RTS source profile.

Model Conditions	#PAHs	R2	X2	%Mass	Average Calculated Source Contribution				
					RTS	Vehicle	Coal	Oil	Wood
Van Metre 2010	12	0.93	0.94	98.92	61%	26%	6%	1%	6%
Selbig 2009	11	0.92	1.15	103.50	21%	41%	8%	1%	29%
None	12	0.91	1.08	97.10	-	60%	8%	0%	31%

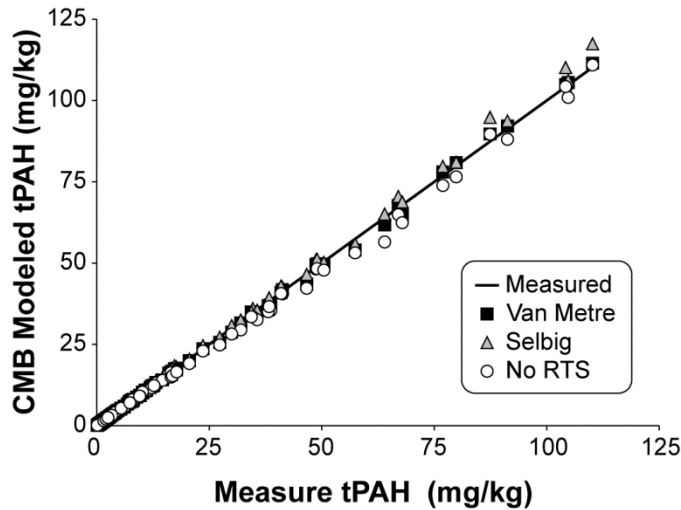


Figure 4-1: Correlations between measured and modeled total PAH concentration, $R^2 > 0.99$, are similar with or with RTS as a CMB source profile.

A collaborator of Van Metre and Mahler used CMB to evaluate sediments collected from storm water detention ponds in Minnesota (Crane 2013) and included model runs with and without RTS as a source input. Crane also found excellent agreement ($r > 0.99$) between CMB model results whether or not RTS was considered a source. While Crane presented statistics that there may be a slightly better fit with the addition of two RTS source profiles than with just two

traffic sources and one wood smoke source, the important finding is that CMB does an excellent job fitting the input source profiles to the sediment source profiles whether or not an RTS related source is included. As the model results are consistent with the null hypothesis, they provide no support for the Mahler hypothesis.

4. The samples identified as RTS sources are actually dust collected parking lots, which suggest that they are likely a mixture of local sources. CMB indicates minor or no contribution when known RTS sample source profiles are used.

The RTS profiles used in the 4 CMB model runs were based on the averages of samples collected either from parking lots in Austin, TX (Mahler et al 2005) or lots from 6 cities across the United States (Van Metre et al 2009). The relative contribution of RTS to the PAHs in these samples is unknown, as is the contribution of atmospheric deposition and other urban sources. Unlike the underlying data used to generate the other source profiles, parking lot dust is subject to weathering processes that are similar to those expected for sediment sources (O'Reilly et al 2012). It is interesting to note that while Van Metre and Mahler had source data for fresh RTS and from RTS test plots their use as a source profile was not discussed.

We reran Van Metre and Mahler's Model A replacing the RTS dust samples with average of either the fresh RTS samples or average of the RTS test plot data from Mahler et al 2005. Benzo(e)pyrene was not included as data was not available for the earlier samples. CMB did not identify RTS as a potential source in most of the 120 sediment samples (Table 5-1).

Table 5-1: Summary of results for 3 CMB runs. Consistent with Van Metre’s Model A, we first used parking lot dust as the RTS source profile. Based on data from Mahler et al 2005, the second run used the average of 6 samples of fresh RTS and the third, an average of samples collected over 4 weeks from RTS test plots.

	Lot Dust	Fresh RTS	Test Plots
# of samples with RTS contribution >0%	107	6	15
% RTS contribution			
Min	0.0	0.0	0.0
Max	95	23	33
Mean	46	0.6	1.5
Median	49	0.0	0.0
Average Model Parameters			
R ²	0.93	0.91	0.91
X ²	0.94	1.11	1.10
%Mass	98.9	96.7	96.7

5. The non-RTS source profiles used by VanMetre and Mahler are mathematical constructs based on the geometric mean of averaged values of PAH ratios taken from 37 articles. The similarity of these constructs to real work sources has not been demonstrated.

Except for the RTS, Van Metre and Mahler (2010) obtained all source profiles used in the four CMB model runs from the literature. The main source cited, Li et al 2003, also did not measure any actual sources but created profiles based on manipulation of published data from over 20 papers. Much of the data that Li used were not actual sample results, but averages of other data. As noted in the underlying papers cited by Li, the coefficients of variation (CV) or relative standard deviations (SD) of these initial data were high as indicated by a CV>100% or SD>mean. Li did not directly apply the source profiles, but generated geometric means of the ratio between each PAH and benzo(e)pyrene. These ratios were then combined as a PAH profile. In some cases, a partitioning

factor was applied to estimate particle phase concentrations. The number of samples used to generate this average of an average differed between the individual PAHs potentially further skewing the generated profile. The resulting relative standard deviations were so high that Li's initial CMB runs resulted in "inestimable" source contributions for many sediment samples. To resolve this problem, first Li et al. and then Van Metre and Mahler arbitrarily reduced the uncertainty factor used in CMB.

Another problem with the Li data set is that some of the samples were not collected from the environment, but from within emissions pipes. Given the reactivity of PAH in the atmosphere, significant changes in PAH profile would be expected between pre-emission and when associated particles reach sediment.

No one has conducted an evaluation of the relevancy of these calculated profiles to actual sources within the air and watersheds of the lakes studied by VanMetre and Mahler (2010). Without such information, the CMB results have little value.

6. The issue of source collinearity was not adequately addressed.

One of the key assumptions of the CMB model is that source profiles are linearly independent of each other (Coulter 2004). Non-independence or collinearly can be an issue with pyrogenic PAHs due to the similarity of source profiles (O'Reilly et al. 2012). The degree of collinearity depends on the number of source categories, the abundance and variability of fitting species, and the relative contribution of each the source. As conditions vary from sample to sample, it is not possible to state that two or more profiles are overly collinear prior to applying them to a specific sample.

Determining whether collinearly among source profiles impacts model results is an important step in model validation (Watson 2004). CMB output files contain two performance factors that indicate the influence of collinearity. The first is the indicator of whether a source contribution is "estimable." While the model will estimate a source contribution even if a source is determined to be inestimable, it flags each source as either estimable or inestimable. A YES (estimable) indicates that the source contribution estimate combination meets the uncertainty criteria (Coulter 2004). Inestimable sources are caused by excessive similarity or collinearity among the source profiles. The standard errors associated with the estimated contribution of one or more inestimable sources are usually too large to allow an adequate separation of these source contributions to be made. As a means of dealing with inestimable sources is to combine them with other sources, the model suggests estimable liner combinations of inestimable sources. While the combined source results in a fit between sources and samples, it does not

allow differentiation among the contribution estimates of the sources contained in the linear combination.

A second source estimate validation indicator is the Tstat, or ratio of the estimated source contribution to its standard error. A Tstat of greater than two is indicative of a contributing source. A Tstat of less than two suggests the source contribution is lower than the detection limit of the CMB method given the uncertainties associated with the source profile.

A summary of the collinearity indicators from VanMetre and Mahler's Model A is shown in Table 7-1. The RTS profile was not identified as an estimable source any of the 120 sediment samples. While four or five source profiles were provided, no more than two sources were estimable for any of the sediment samples and a majority had no estimable sources. Van Metre's RTS source profile met the Tstat criteria >2.0 for about a third of the samples, and the vehicle exhaust profile met the criteria with the greatest number of sediments samples. To broaden this evaluation, a summary of the collinearity indicators for three other CMB runs discussed in Van Metre and Mahler (2010) are in Table 7-1. The maximum number of samples with RTS as an estimable source was 12. The number of estimable sources identified is consistent with the results presented in Table 2. Van Metre and Mahler's RTS source profile met the Tstat criteria >2.0 for between 44 to 73% of the sediment samples.

CMB's developer admits there are not hard rules concerning how collinearity indicators should be interpreted (Coulter 2004). But the limited number of estimable sources and the few sources meeting the Tstat criteria indicate that the inputs used in this assessment challenge CMB's key assumption that source profiles are linearly independent of each other. Such a finding is not surprising as the chemical similarity of different PAH sources has been identified as an issue which can limit the application of receptor models such as CMB (Galarneau 2008). The problem can be compounded in sediments as weathering that occurs between emission and deposition results in a residual profile of the more stable PAHs (O'Reilly et al. 2012). Without additional consideration of the influence of source collinearity, the results presented in Van Metre and Mahler (2010) are insufficient to support a hypothesis concerning the role of RTS as a PAH source in urban systems.

Table 7-1: Number of estimable sources and Tstat results for Van Metre and Mahler’s Model A. The results suggest collinearity among source profiles was not adequately addressed.

Van Metre Model A		
Number of samples where source is estimable		
	Yes	No
RTS	0	107
Wood	1	64
Coal	13	43
Vehicles	1	107
Fuel oil	36	4
Estimable sources per sample (n=120)		
Max	2	
0	71	
1	47	
2	2	
Percent of 120 samples <u>Tstat >2.0</u>		
	Yes	No
RTS	38%	51%
Wood	2%	52%
Coal	4%	43%
Vehicles	28%	63%
Fuel oil	0%	33%

7. The potential contribution of coal tar from manufactured gas plants (MGPs) was not considered.

Although MGPs have long been known to be an important source of pyrogenic PAHs in the environment (Costa et al 2004) they have been ignored by VanMetre and Mahler. Such plants were typically placed along water bodies and are known sources of sediment contamination. Also, the tars from MGPs were sometimes incorporated into road base, thus spreading the material throughout a region (Hubbard and Draper 1911; Reinke and Glidden 2007) and potentially serving as source of sediment PAHs (Ahrens and Depree 2010).

Review of EPA’s list of MGP sites indicates that many of the cities the USGS have been studying have had gas plant operations (EPA 1985). For example, Mahler et al 2005 focused on RTS evaluated suspended solids collected in Austin and Forth Worth, TX but failed to mention that both cities had MGPs. PAH source profiles associated with MGP waste were not included in Van Metre and Mahler’s CMB source evaluations.

8. Principal component analysis (PCA) results indicate that the sources used in CMB do not properly represent the actual sources.

PCA is a multivariate approach for evaluating potential sources. When sources and their mixtures are evaluated together, the sources typically appear as end members on a PCA plot. Mixtures should plot within the area bounded by the sources (O'Reilly et al 2014). To evaluate the CMB input and outputs, the 40 lakes data was first run with the proposed source inputs used in Van Meter and Mahler's Model A. Unweathered RTS was also included. As shown in Figure 9-1, few of the sediment samples were within the area bounded by the proposed sources.

Source profiles were then created with combining the sources in the ratio indicated by CMB. These results were then analyzed by PCA. As shown in Figure 9-2, the sediment plots shifted to fit within the area bounded the modeled identified sources.

These findings highlight two important points. First, they indicate that the source profiles used in CMB do not adequately represent the actual sources as few of the sediment samples plot with the expected area.

Secondly they demonstrate that, while correlation coefficients between the measured and modeled results are high, there are detectable difference in their PAH profiles. While the location of the modeled sediment profiles are consistent with a mixture of the coal, lot dust, and vehicles source profiles indicated by CMB, they do not represent the measured sediment profiles.

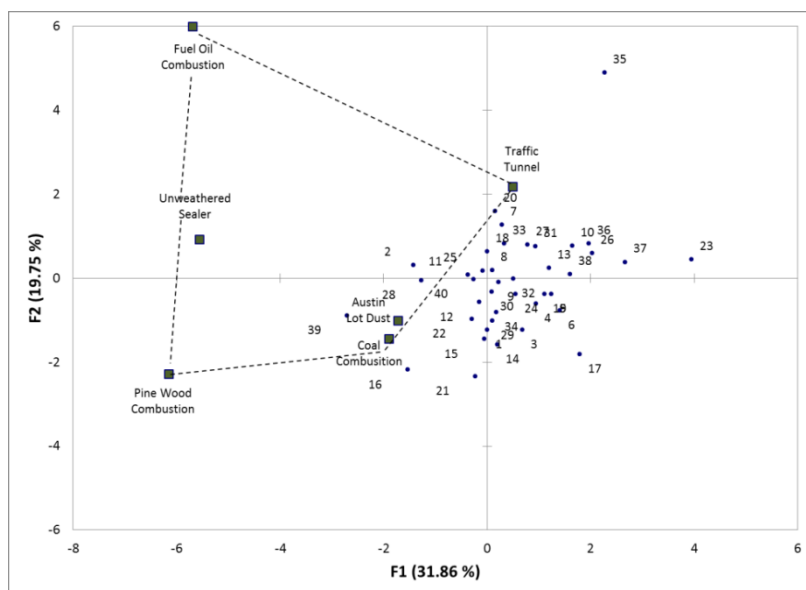


Figure 9-1: PCA of measured sediment profiles and proposed sources.

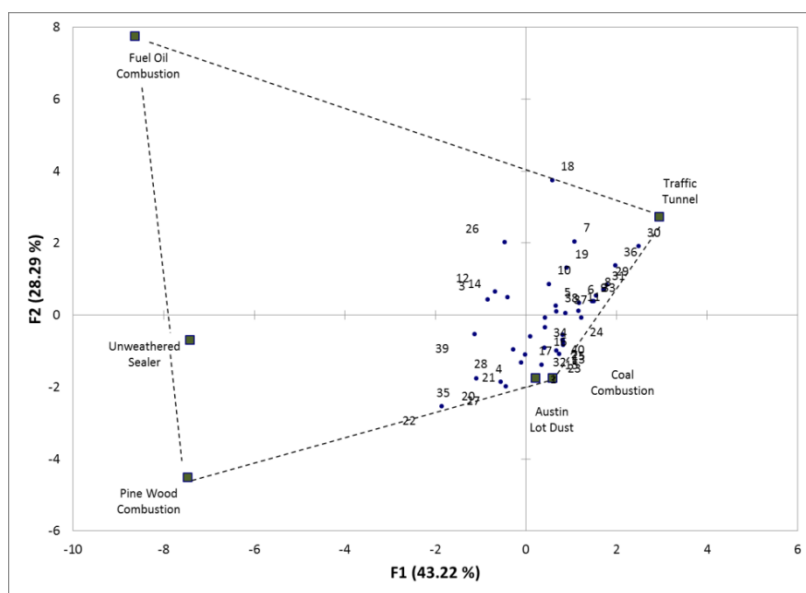


Figure 9-2: PCA of model sediment profiles and proposed sources.

9. Reliance of other researchers on the CMB approach of Van Metre and Mahler (2010) highlights the need for the USGS to acknowledge its limitations

In Crane (2013) and Witter et al (2014), researchers applied Van Metre and Mahler CMB approach with little change to local sediment data sets. Because it has been shown that this approach assigns a RTS contribution to many urban sediments, it is not surprising they obtained similar results. The underlying problems described in this memorandum get lost when researcher defend their results by reliance on what appears to be an USGS approved methodology.

10. The presentation of CMB model results as proven fact in legislative advocacy highlights the need for the USGS to acknowledge the model's limitations

While advocating for a RTS product ban in testimony to Washington State legislators, Van Metre cited the CMB results from a local lake as proof that a problem existed. Similarly, Crane used CMB results to successfully advocate for a product ban in Minnesota. Given the uncertainty in receptor modeling generally, and the weakness in this application, it is critical for agency scientist to accurately describe the meaning of model outputs when they are presented to non-technical policy makers (O'Reilly et al 2013).

References

- Ahrens, M.J. and C.J. Depree. 2010. A source mixing model to apportion PAHs from coal tar and asphalt binders in street pavement and urban aquatic sediments. *Chemosphere* 81:1526-1535
- Bzdusek, P.A., E.R Christensen, A. Li, and Q-M Zou. 2004. Source apportionment of sediment PAHs in Lake Calumet, Chicago: Application of factor analysis with nonnegative constraints. *Environ. Sci. Technol.* 38: 97-103.
- Costa, H.J., K. White, J. Ruspantini. 2004. Distinguishing PAH Background and MGP Residues in Sediments of a Freshwater Creek. *Environ Forensics* 5:171-182
- Coulter, C.T. 2004. EPA-CMB 8.2 users' manual. EPA-452/R-04-011. U.S. Environmental Protection Agency, Washington DC.
- Crane, J. 2013. Source apportionment and distribution of polycyclic aromatic hydrocarbons, risk considerations, and management implications for urban stormwater pond sediments in Minnesota, USA. *Arch Environ Contam Toxicol*. DOI 10.1007/s00244-013-9963-8

EPA. 1985. Survey of town gas and by-product production and locations in the United States (1880–1950). EPA/600/7-85/004. U.S. Environmental Protection Agency, Washington, DC

Galarneau, E. 2008. Source specificity and atmospheric processing of airborne PAHs: Implications for source apportionment. *Atmos. Environ.* 42(11): 8139-8149.

Hubbard P, Draper CN. 1911. Naphthalene in road tar. Circular No. 96. Department of Agriculture, Office of Public Roads, Washington, DC.

Li, A., J-K Jang, and P.A. Scheff. 2003. Application of EPA CMB8.2 model for source apportionment of sediment PAHs in Lake Calumet, Chicago. *Environ. Sci. Technol.* 37: 2958-2965.

Lima, A.L.C., J.W. Farrington, and C.M. Reddy. 2005. Combustion-derived polycyclic aromatic hydrocarbons in the environment—A review. *Environ. Forensics.* 6: 109-131.

Mahler, B.J., P.C. Van Metre, T.J. Bashara, J.T. Wilson, and D.A. Johns. 2005. Parking lot sealcoat: An unrecognized source of urban polycyclic aromatic hydrocarbons. *Environ. Sci. Technol.* 39: 5560-5566.

O'Reilly, K., J. Pietari, and P. Boehm. 2012. A forensic assessment of coal tar sealants as a source of polycyclic aromatic hydrocarbons in urban sediments. *Environ Forensics* 13:185-196.

O'Reilly, K., J. Pietari, and P. Boehm. 2013. Parsing pyrogenic PAHs: Forensic chemistry, receptor models, and source control policy. *Integ Environ Assess and Manage.* DOI 10.1002/ieam.1506

O'Reilly, K., S. Ahn, J. Pietari, and P. Boehm. 2014. Use of receptor models to evaluate sources of PAHs in sediment. *Polycyclic Aromatic Compounds Journal.* Submitted.

Reinke G, Glidden S. 2007. Case study of worker exposure to coal tar containing paving materials on a routine paving project in Iowa. *J Occup Environ Hyg* 4(S1):228–232

Van Metre, P.C., B.J. Mahler, and J.T. Wilson. 2009. PAHs underfoot: Contaminated dust from coal-tar sealcoated pavement is widespread in the United States. *Environ. Sci. Technol.* 43(1): 20-25.

Van Metre, P.C. and B.J. Mahler. 2010. Contribution of PAHs from coal–tar pavement sealcoat and other sources to 40 U.S. lakes. *Sci Tot Environ* 409:334-344.

Witter, A.E., Nguyen, M.H., Baidar, S. and P.B. Sak. 2014. Coal-tar-based sealcoated pavement: A major PAH source to urban stream sediments. *Environ Pollut* 185:59–68.

Exhibit F

Letter from Myron O. Knudson, Director,
Superfund Division, EPA Region 6

to

Ms. Toby Hammett Futrell, City Manager, City
of Austin, TX

dated

April 17, 2003



UNITED STATES ENVIRONMENTAL PROTECTION AGENCY

REGION 6
1445 ROSS AVENUE, SUITE 1200
DALLAS, TX 75202-2733

April 17, 2003

Ms. Toby Hammett Futrell
City Manager
City of Austin
124 S. Eighth Street, Suite 101
Austin, TX 78701

Dear Ms. Futrell:

We have reviewed the Health Consultation prepared by the Texas Department of Health (TDH) and the Agency for Toxic Substances and Disease Registry (ATSDR) for the Barton Springs Pool in Austin, Texas. The U.S. Environmental Protection Agency (EPA) concurs with the overall conclusion of the TDH and the ATSDR that swimming and playing in the Barton Springs Pool do not pose an apparent public health hazard.

We also agree with the specific conclusions and public health action recommendations outlined in the consultation, including:

Conclusions

1. The information reviewed does not indicate that people who swim in the Barton Springs Pool would be exposed to levels of contaminants that would be expected to cause adverse effects.
2. Adverse health outcomes from exposure to soil near the creosote-treated posts used for erosion control near the shallow end of the pool are not likely.
3. The levels of total petroleum hydrocarbons detected in both the water and sediment in the pool are not expected to result in adverse health outcomes.

Public Health Action Recommendations

1. Provide public health education to address any concerns that the public may have concerning the risk associated with swimming in the pool.
2. Investigate the potential for the creosote-treated posts near the shallow end of the pool to serve as a source of polynuclear aromatic hydrocarbons in soil.
3. Continue to monitor the pool for total petroleum hydrocarbons.

If you have any questions, please contact Jon Rauscher or Don Williams of my staff at (214) 665-8513 or (214) 665-2197, respectively.

Sincerely yours,

Wren Stey
for Myron O. Knudson
Director
Superfund Division