



Investigating and Acquiring Mitigation Sites

April 15, 2011



AMERICA'S
BEST
ENERGY VALUE



Karl Baker
Land Agent
ICG Hazard, LLC



Investigation



- What makes a great mitigation site?
 - **Need**
 - Water Quality
 - Location
 - Site Control
 - Size



Investigation cont'd



■ Need:

- Headcuts
- Bank Erosion
- Canopy Loss
- Historic Stream Relocation
- Logging Debris/Damage
- Other Land Use Impact



Headcuts



Pace Br.



Headcuts cont'd





Bank Erosion





Bank Erosion cont'd





Loss of Canopy





Historic Relocation





Logging Debris





Other Land Use Impacts





Other Land Use Impacts cont'd





Other Land Use Impacts cont'd





Other Land Use Impacts





Investigation



- **What makes a great mitigation site?**
 - Need
 - **Water Quality**
 - Location
 - Site Control
 - Size



Water Quality



-
- Always target good quality water.
 - Remember, the lights are on but nobody's home.....



Investigation



- **What makes a great mitigation site?**
 - Need
 - Water Quality
 - **Location**
 - Site Control
 - Size



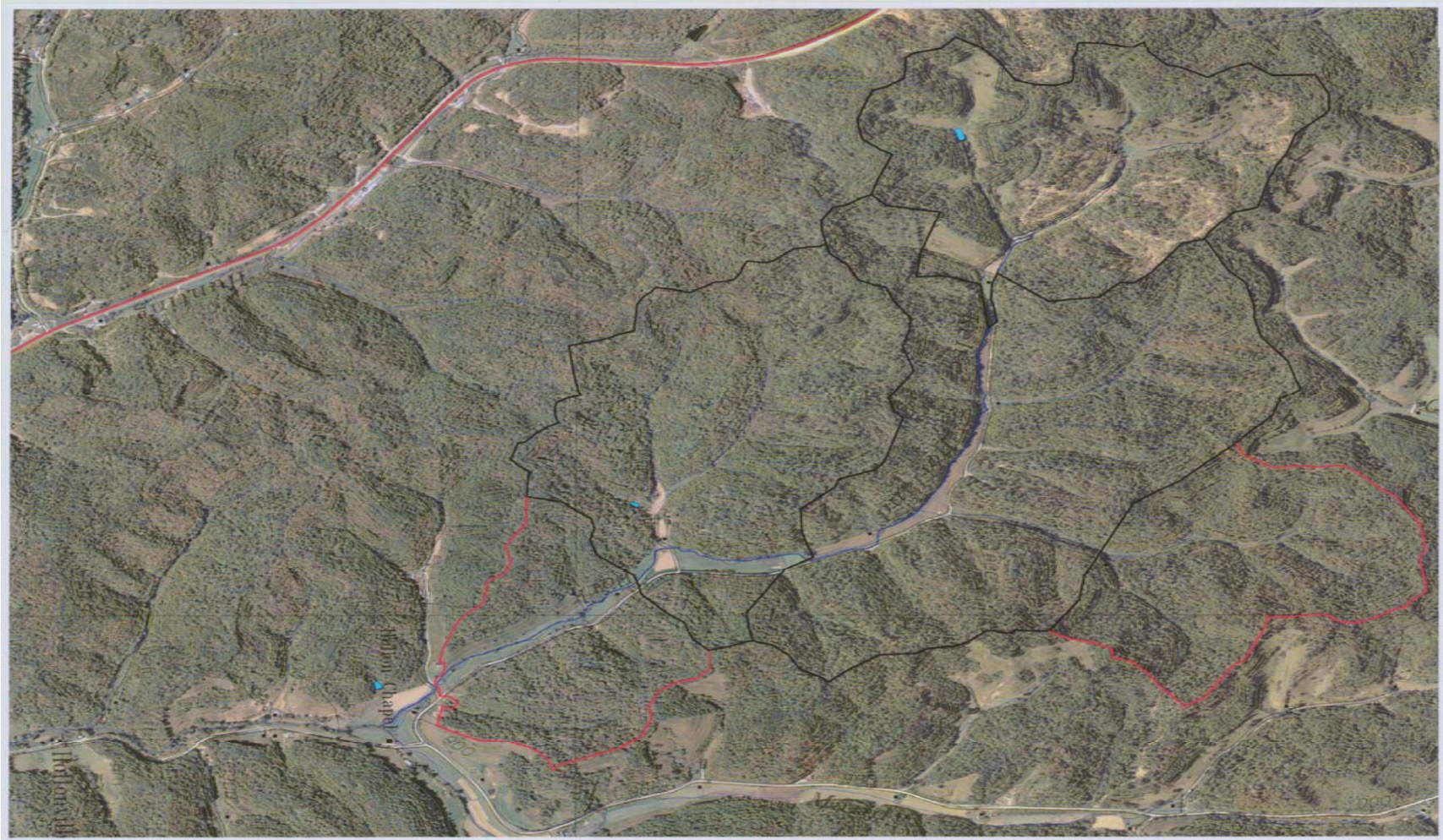
Location



-
- **Headwater streams**
 - **Urban areas**
 - **Farms**



Headwater Stream



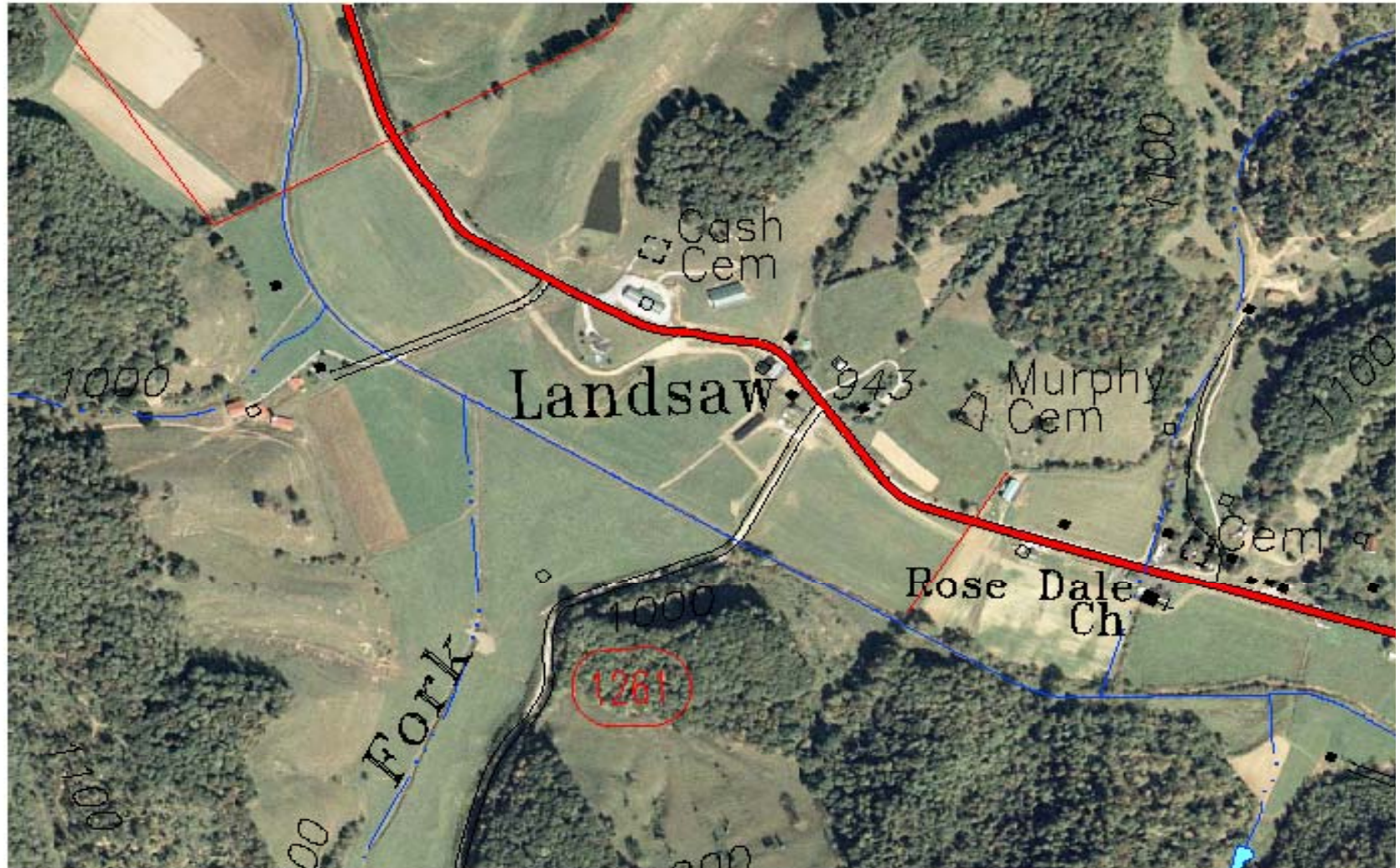


Urban Areas





Farms





Investigation



- **What makes a great mitigation site?**
 - Need
 - Water Quality
 - Location
 - **Site Control**
 - Size



Site Control



- **Natural Resources – gaslines, gas wells, coal reserves**
- **Public roads within the watershed**
 - **Paved – road salt runoff, access to a greater number of unwanted users**
 - **Gravel – transport of gravels into the stream channel**
 - **Drainage pattern – culverts can redirect drainage throughout the mitigated area**
- **Trespassing - intentional or based on historic usage**
- **Garbage dumping – especially a problem along uninhabited roads**



Investigation



- **What makes a great mitigation site?**
 - Need
 - Water Quality
 - Location
 - Site Control
 - **Size**



Size



-
- **Tract must be large enough to offset all of the associated costs including:**
 - Purchase
 - Design
 - Permitting
 - Construction
 - Maintenance
 - Monitoring
 - **Equipment efficiency**
 - Less movement and mobilization costs
 - **Greater impact to watershed**
 - Maximized downstream benefit



Acquiring



-
- **How do I find?**
 - **Economics**
 - **Ownership**



Acquiring



■ HOW DO I FIND THESE SITES?

- Newspapers
- Real Estate Agents
- Loggers
- Word of Mouth
- Drive By



Acquiring cont'd



- **Newspapers:**
 - Classifieds
 - Court Sales
 - Estate Sales
 - Bank Foreclosures
 - Divorces
- **Real Estate Agents:**
 - Not the best farm
 - Farms with issues



Acquiring cont'd



- **Loggers:**
 - 50% of our sites are found through loggers
 - After logging, owners are usually primed to sale the tract
- **Word of Mouth:**
 - Once you have purchased in an area, sellers begin to knock on your door.
 - Leave a card.
- **Drive By**
 - Look for areas not maintained or in disrepair



Acquiring



-
- How do I find?
 - **Economics**
 - Ownership



Economics



-
- Buy or Lease
 - Cost per Unit



Buy or Lease?



-
- **Buying can be less expensive in the long run**
 - **Lease area is harder to harder to get restricted covenants**
 - **Future control**
 - **Improved site control**
 - **Resell with restrictions intact**



Cost per Unit



- **Cost per acre**
- **Cost per tract**
- **Cost per credit unit (in Eastern KY – the EIU)**



Ownership



■ Title

- Always, always, always run title
- Not just for ownership
 - Tax liens
 - Leases
 - Easements
 - Rights of way



My Hit List



- **Headwater watershed**
- **Maximum control**
- **Limited public access**
- **Excellent water quality**
- **Bang for my buck (\$)**
- **Largest tract possible**



My Avoidance List



- **Sediment control ponds!**
- **Residences**
- **Poor water quality**
- **Sandy soil**
- **Landslide areas**
- **Limited equipment access**
- **Coal reserve areas**
- **Leases!**



Things I've Learned



- Be a good neighbor
- Know when to walk away
- Build in permanent stream crossings
- Maintain good agency relationships
- Keep up to date on new ideas and ways



■ Questions?