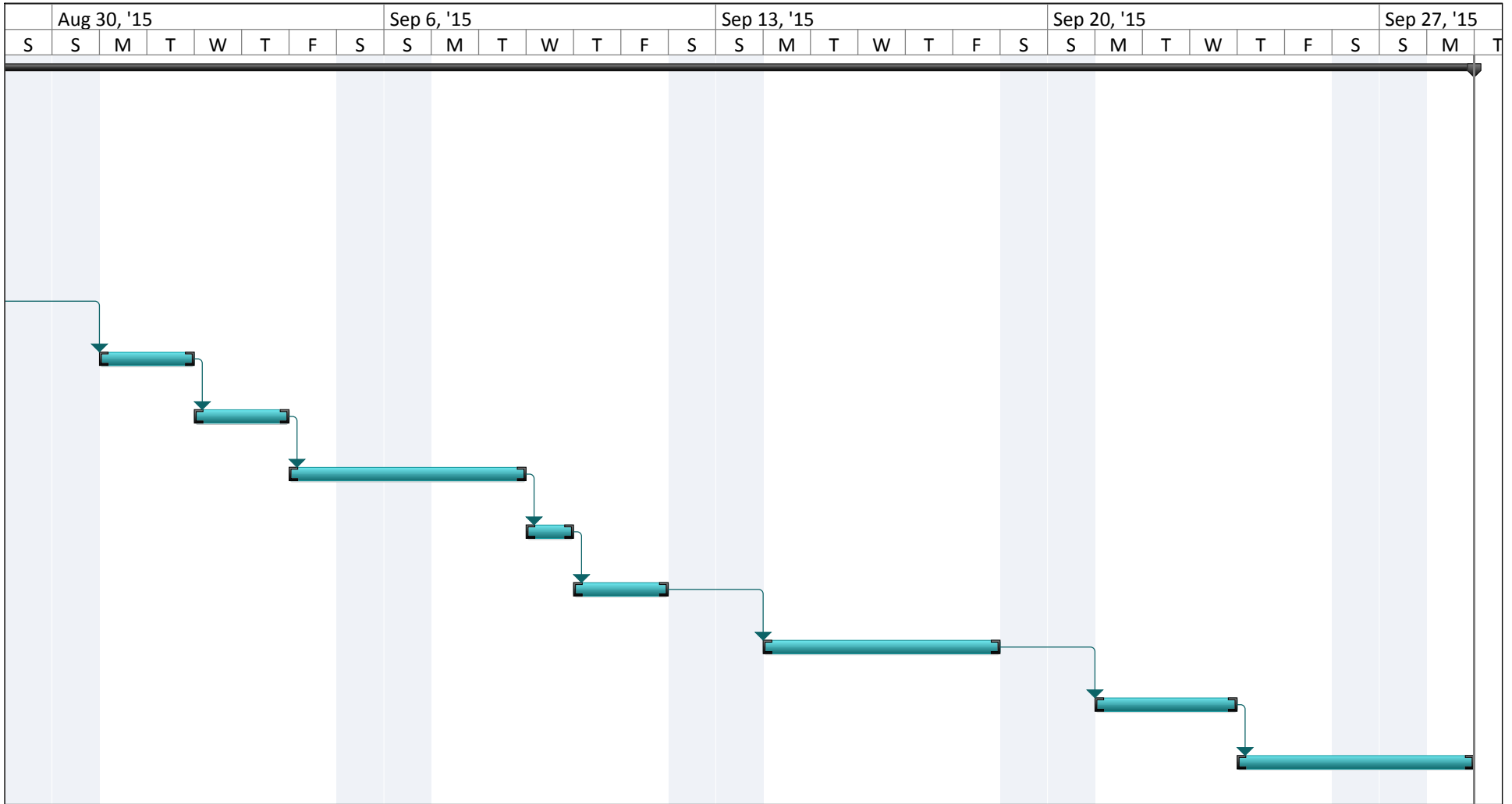


ID	Task Mode	Task Name	Duration	Start	Finish	Aug 16, '15							Aug 23, '15						
						S	M	T	W	T	F	S	S	M	T	W	T	F	
1		<b>Gold King Portal Development</b>	<b>31 days</b>	<b>Mon 8/17/15</b>	<b>Mon 9/28/15</b>														
2		Mobilize and Set-up	6 days	Mon 8/17/15	Mon 8/24/15														
3		Establish Access to High Wall	1 day	Tue 8/25/15	Tue 8/25/15														
4		Support High Wall - Mesh and Bolt	2 days	Wed 8/26/15	Thu 8/27/15														
5		Excavate Highwall to Sill Level	1 day	Fri 8/28/15	Fri 8/28/15														
6		Set-up Pumping System	2 days	Mon 8/31/15	Tue 9/1/15														
7		Install Drain Line	2 days	Wed 9/2/15	Thu 9/3/15														
8		Install Portal Pipe Culvert	3 days	Fri 9/4/15	Tue 9/8/15														
9		Bolt Tunnel Brow	1 day	Wed 9/9/15	Wed 9/9/15														
10		Reestablish Access to Portal	2 days	Thu 9/10/15	Fri 9/11/15														
11		Clean and Support 100' of Tunnel	5 days	Mon 9/14/15	Fri 9/18/15														
12		Fabricate and Install Portal Gate	3 days	Mon 9/21/15	Wed 9/23/15														
13		Demobilize	3 days	Thu 9/24/15	Mon 9/28/15														

Project: Gold King Schedule Date: Tue 8/11/15	Task		External Milestone		Manual Summary Rollup	
	Split		Inactive Task		Manual Summary	
	Milestone		Inactive Milestone		Start-only	
	Summary		Inactive Summary		Finish-only	
	Project Summary		Manual Task		Deadline	
	External Tasks		Duration-only		Progress	



Project: Gold King Schedule Date: Tue 8/11/15	Task		External Milestone		Manual Summary Rollup	
	Split		Inactive Task		Manual Summary	
	Milestone		Inactive Milestone		Start-only	
	Summary		Inactive Summary		Finish-only	
	Project Summary		Manual Task		Deadline	
	External Tasks		Duration-only		Progress	