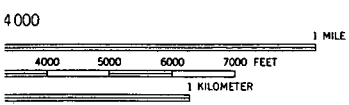


4203
 4201
 4200
 55'
 4198
 4197000' N

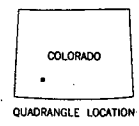
126027

11 SILVERTON 5.7 MI. 40' 1255' 10' INTERIOR-GEOLOGICAL SURVEY, RESTON, VIRGINIA-1956 750000' E



1/4" AL 40 FEET
 SEA LEVEL

L MAP ACCURACY STANDARDS
 COLORADO 80225, OR RESTON, VIRGINIA 22092
 ND SYMBOLS IS AVAILABLE ON REQUEST

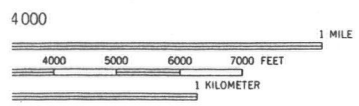
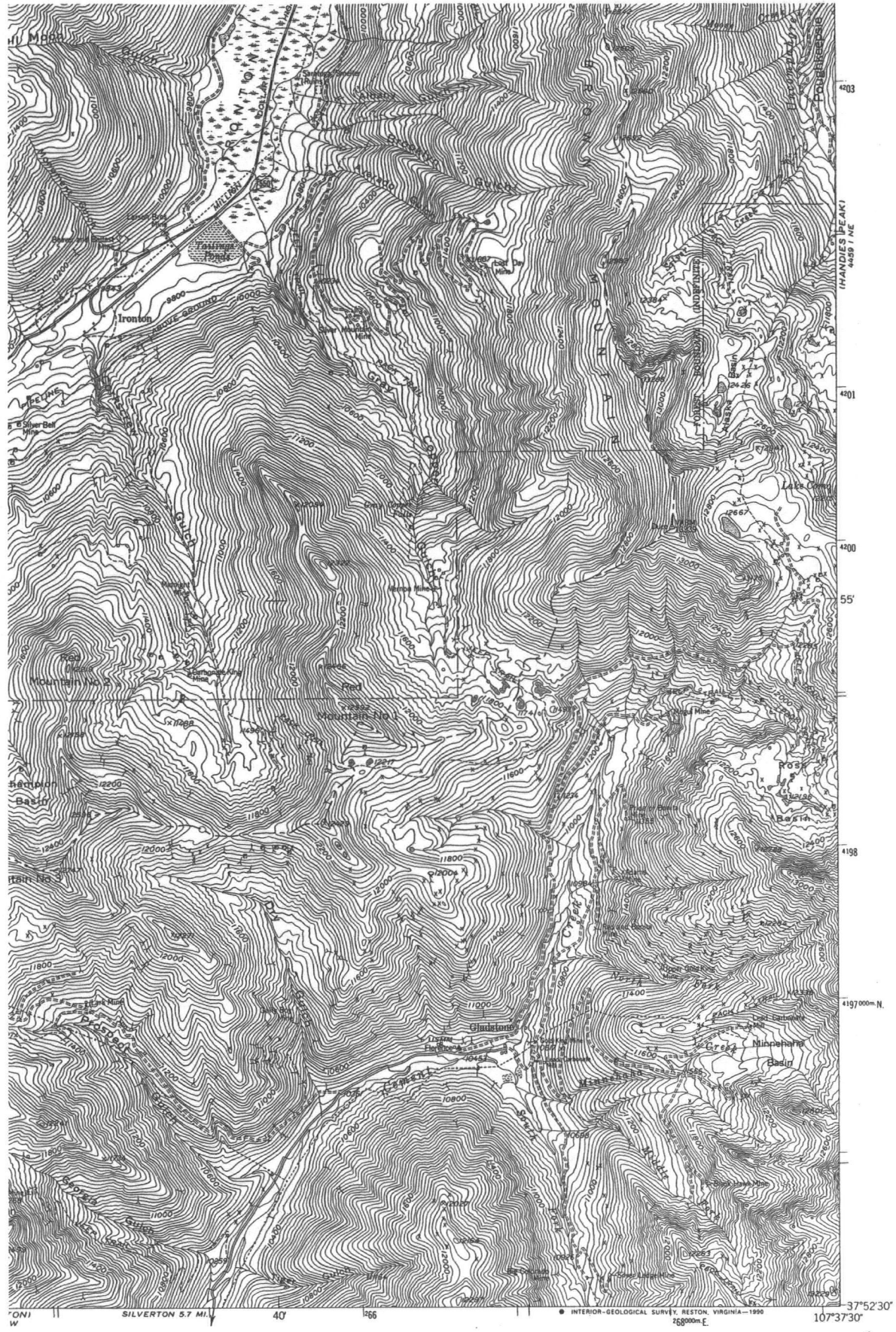


ROAD CLASSIFICATION

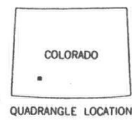
Medium duty ——— Light duty ———
 Unimproved dirt - - - - -
 U. S. Route State Route

IRONTON, COLO.
 NW/4 SILVERTON 15' QUADRANGLE
 N3752.5—W10737.5/7.5

1955
 PHOTOINSPECTED 1972
 AMS 4459 1 NW—SERIES V877



MAP ACCURACY STANDARDS
 COLORADO 80225, OR RESTON, VIRGINIA 22092
 ND SYMBOLS IS AVAILABLE ON REQUEST



ROAD CLASSIFICATION
 Medium duty _____ Light duty _____
 Unimproved dirt =====
 U.S. Route State Route

IRONTON, COLO.
 NW/4 SILVERTON 15' QUADRANGLE
 N3752.5—W10737.5/7.5

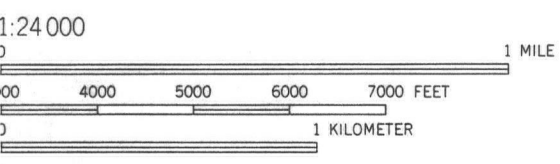
1955
 PHOTOINSPECTED 1972
 AMS 4459 1 NW—SERIES V877

HOWARDSVILLE
 4459 1 SE



4203
4201
4200
55
4198
4197000m.N.
37°52'30"

IRONTON 1 SW SILVERTON 5.7 MI. 40' 266 INTERIOR-GEOLOGICAL SURVEY, RESTON, VIRGINIA-1990 268000m.E. 107°37'30"



VERTICAL SCALE: 40 FEET PER INCH (1:24,000)
HORIZONTAL SCALE: 1:24,000



ROAD CLASSIFICATION
 Medium-duty Light-duty
 Unimproved dirt
 U.S. Route State Route

IRONTON, COLO.
 NW/4 SILVERTON 15' QUADRANGLE
 N3752.5-W10737.5/7.5

1955
 PHOTOINSPECTED 1972
 AMS 4459 I NW-SERIES V877

MAP ACCURACY STANDARDS
 FEDERAL GEOLOGICAL SURVEY, RESTON, VIRGINIA 22092
 MAP AND SYMBOLS IS AVAILABLE ON REQUEST

HOWARDSVILLE
 4459 I SE