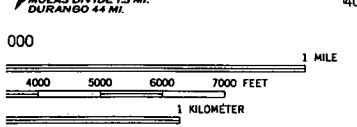
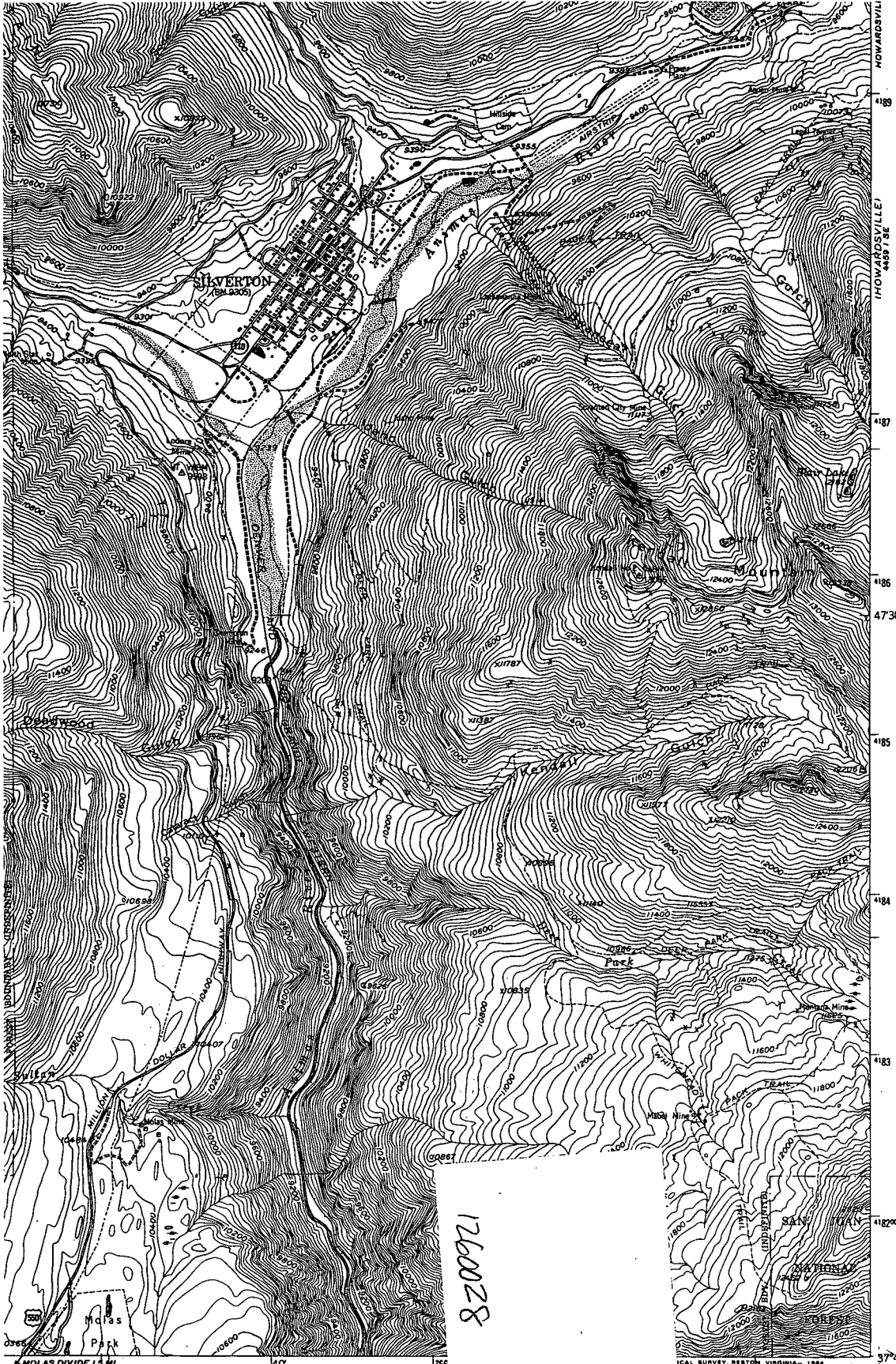
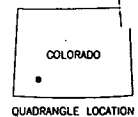


Ref. 05



Vertical Datum of 1929

MAP ACCURACY STANDARDS  
BOX 25286, DENVER, COLORADO 80225  
SYMBOLS IS AVAILABLE ON REQUEST



1260028

- AD CLASSIFICATION
- Light-duty
  - Improved dirt
  - U.S. Route
  - State Route

SILVERTON, COLO.  
SW/4 SILVERTON 15' QUADRANGLE  
37107-G6-TF-024

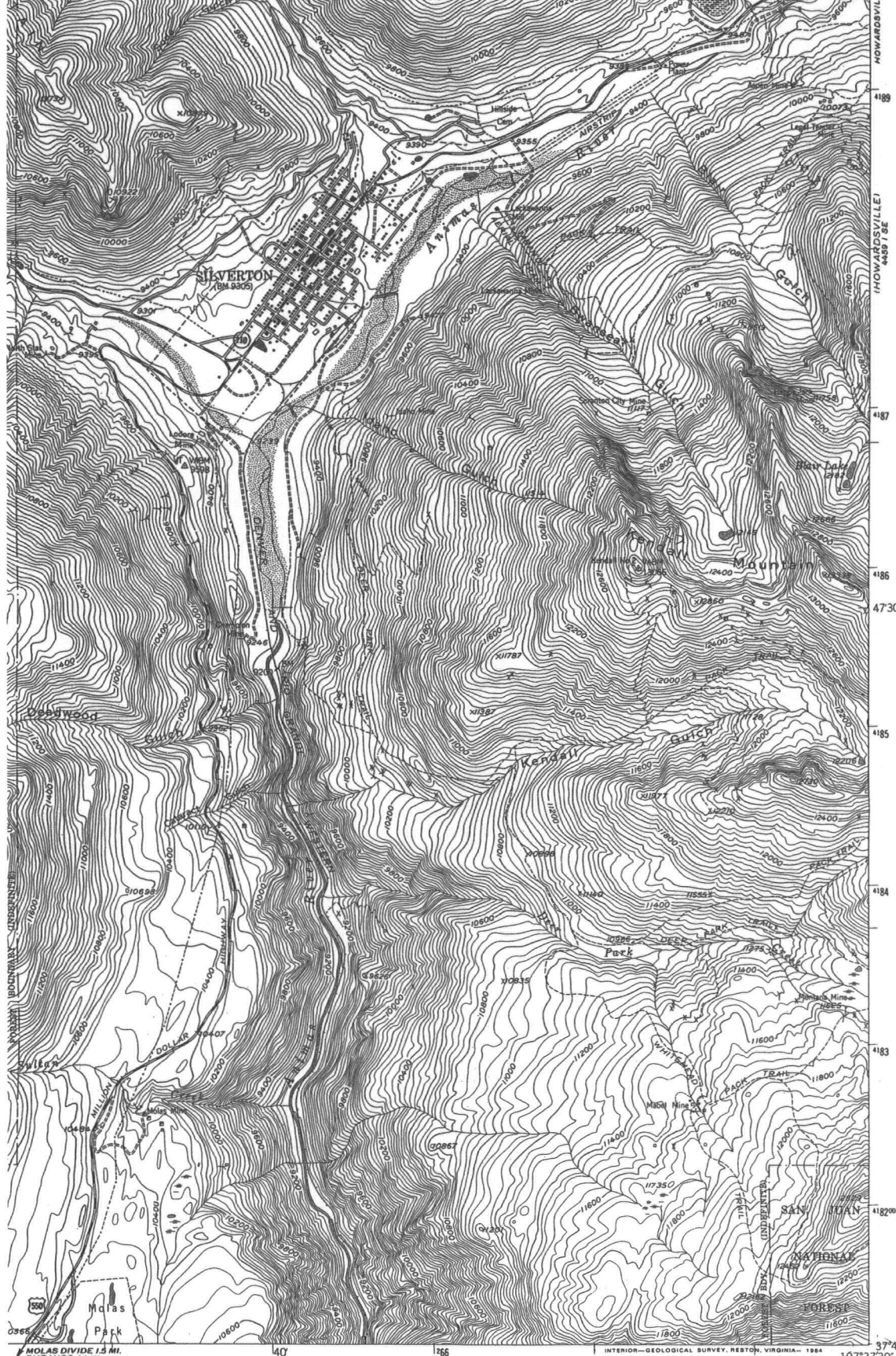
1955

DMA 4459 I SW-SERIES V877

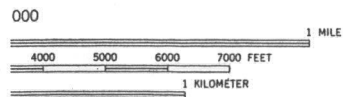
FORM KING PEARL  
2591115E



Ref. 05



HOWARDSVILLE  
4459 1 SE  
4189  
4187  
4186  
4730'  
4185  
4184  
4183  
4182000m N  
37°45'  
107°37'30"



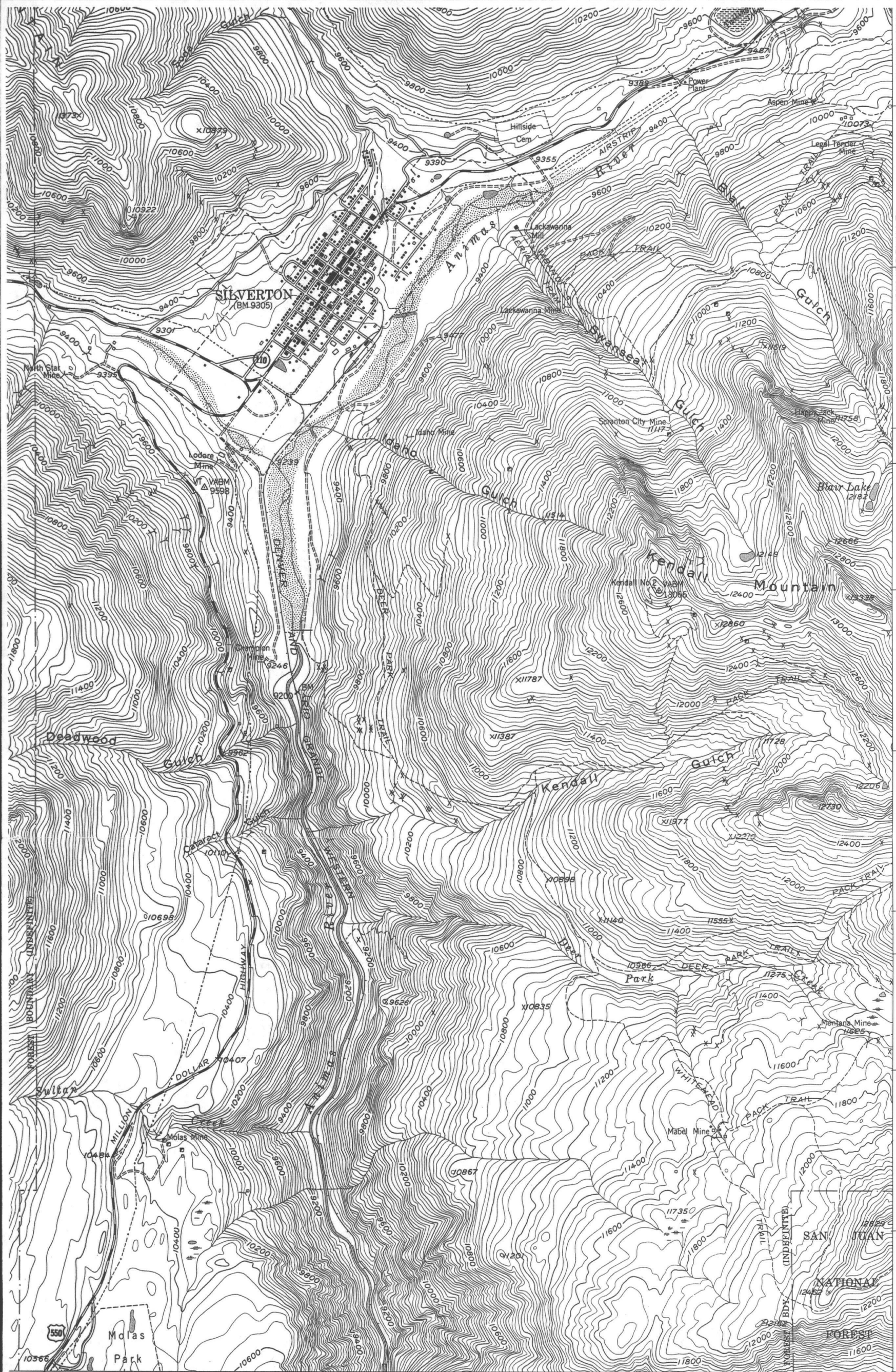
ROAD CLASSIFICATION  
 Medium-duty ——— Light-duty ———  
 Unimproved dirt - - - - -  
 U. S. Route      State Route

SILVERTON, COLO.  
 SW/4 SILVERTON 15 QUADRANGLE  
 37107-66-TF-024  
 1955  
 DMA 4459 I SW—SERIES V877

MAP ACCURACY STANDARDS  
 IOX 25286, DENVER, COLORADO 80225  
 SYMBOLS IS AVAILABLE ON REQUEST

STORM KING PEAK  
 4459 1 NE

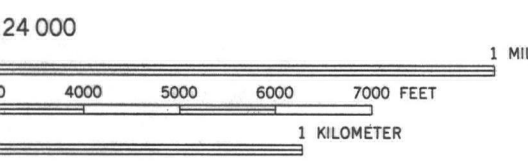




HOWARDSVILLE  
4459 1 SE  
4189  
4187  
4186  
47'30"  
4185  
4184  
4183  
4182000m N  
37°45'  
107°37'30"



MOLAS DIVIDE 1.5 MI.  
DURANGO 44 MI.



INTERIOR—GEOLOGICAL SURVEY, RESTON, VIRGINIA—1984  
268000m E

ROAD CLASSIFICATION  
Medium-duty..... Light-duty.....  
Unimproved dirt =====  
U.S. Route State Route

SILVERTON, COLO.  
SW/4 SILVERTON 15' QUADRANGLE  
37107-G6-TF-024

1955

DMA 4459 I SW—SERIES V877

ALL MAP ACCURACY STANDARDS  
GIVEN IN THIS MAP, BOX 25286, DENVER, COLORADO 80225  
AND SYMBOLS IS AVAILABLE ON REQUEST

(STORM KING PEAK)  
4459 1 SE

