

Comparison of Asian Emissions Inventories

Eri Saikawa

Emory University, Department of Environmental Sciences

April 15, 2015

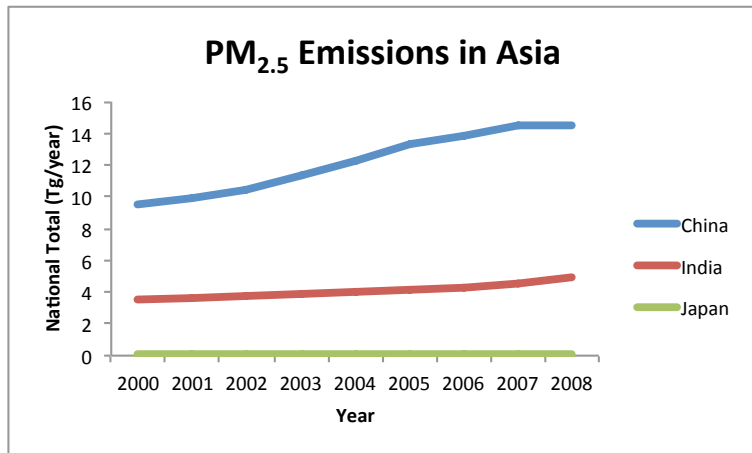
1 Introduction

2 Methods

3 Results

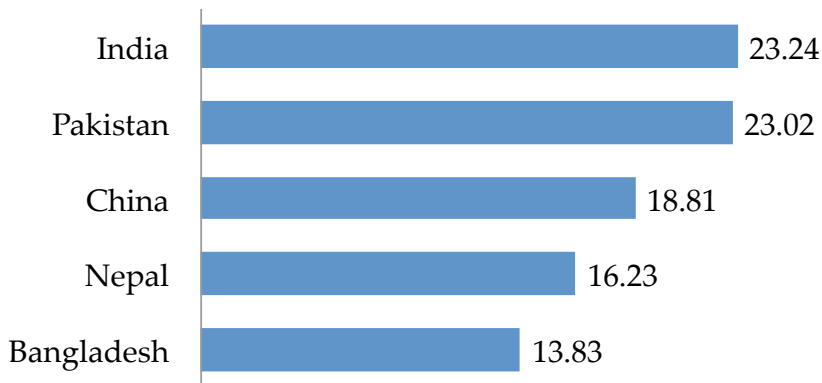
4 Conclusion

Increasing Emissions in Asia



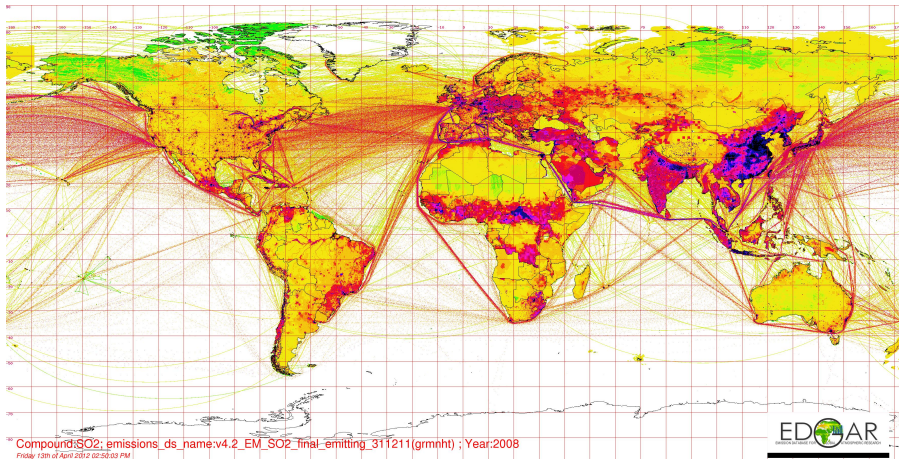
Source Kurokawa et al., 2013

Countries with Lowest Air Quality Score

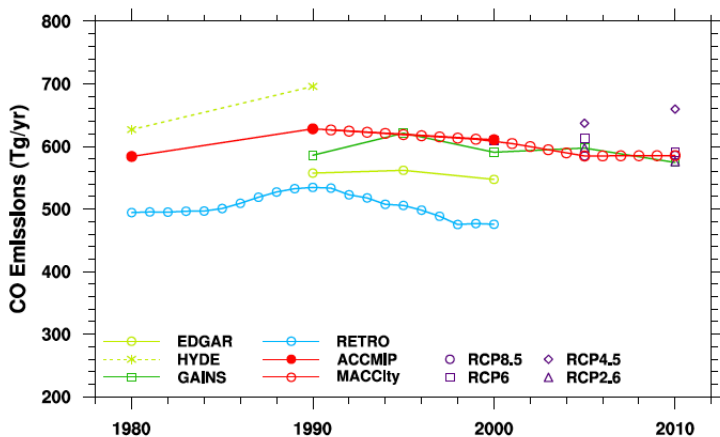


Source Yale University, 2014 Environmental Performance Index

Importance of Emissions Inventories



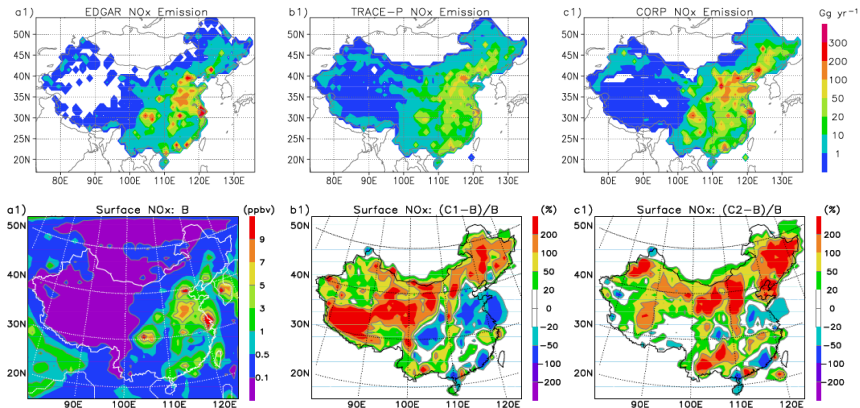
Difference in Global Emissions Inventories



Source Granier et al., 2011



Impacts on Modeling



Source Ma and van Aardene, 2004

Research Questions

- How much differences are there among emissions inventories in Asia?
- Which sector/species do we see the largest difference and why?

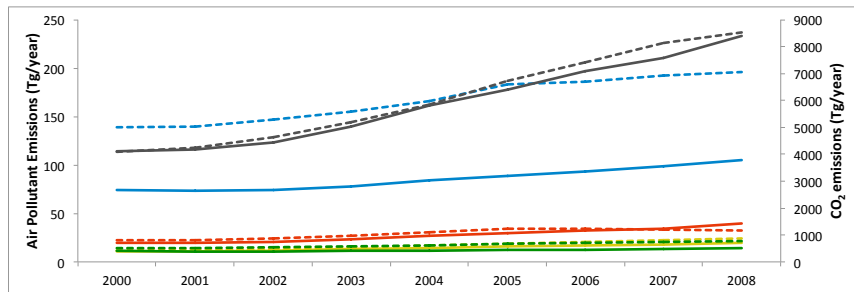
Emissions Inventories

- Emissions Database for Global Atmospheric Research (EDGAR) v4.2 - Global
- Regional Emissions in ASia (REAS) v2 - Asia
- Multi-resolution Emission Inventory for China (MEIC) - China
- Zhao Yu's - China
- Ajay Nagpure's - India
- Pandey et al. (2014) and Sadaverte and Venkataraman (2014) - India

Analysis

- Years: 2000 - 2008 (2011 for India)
- Pollutants: CO, SO₂, NO_x, PM₁₀, CO₂
- Sectors: industry, transport, power, and residential
- Countries: China, India, Pakistan, and Nepal

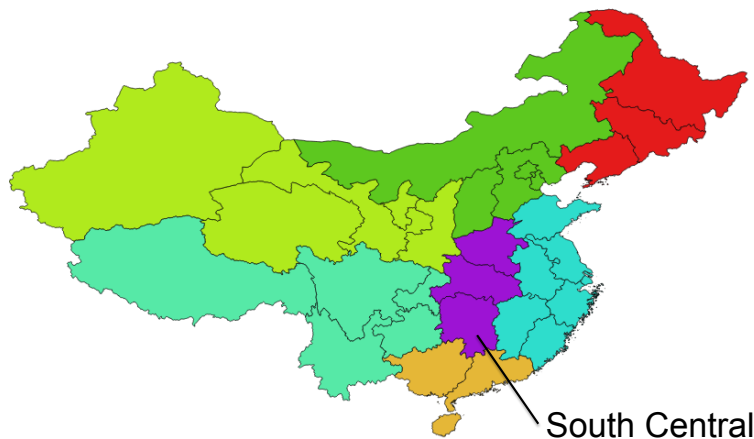
China Total Emissions



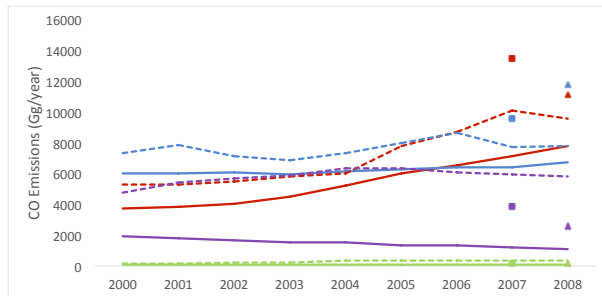
Solid: EDGAR, Dash: REAS

Blue: CO, Red: SO₂, Yellow: NO_x, Green: PM₁₀, Brown: CO₂

China South Central Region



China CO Emissions in South Central Region



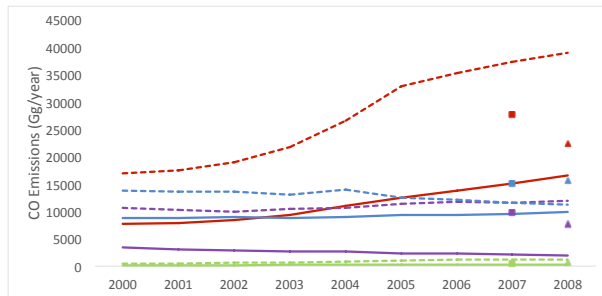
Solid: EDGAR, Dash: REAS

Red: industrial, Purple: transport, Green: power, Blue: residential

China East Region

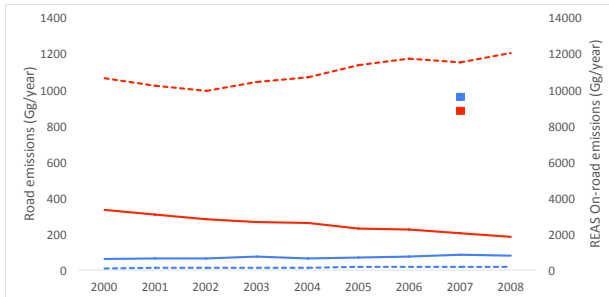


China CO Emissions in East Region



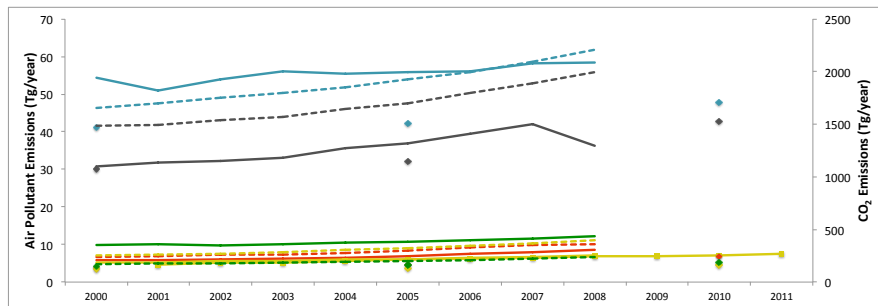
Solid: EDGAR, Dash: REAS, Square: Zhao Yu, Triangle: MEIC
 Red: industry, Purple: transport, Green: power, Blue: residential

China CO Road Emissions in East Region



Solid: EDGAR, Dash: REAS, Circle: Zhao Yu
 Red: On-road, Blue: Off-road

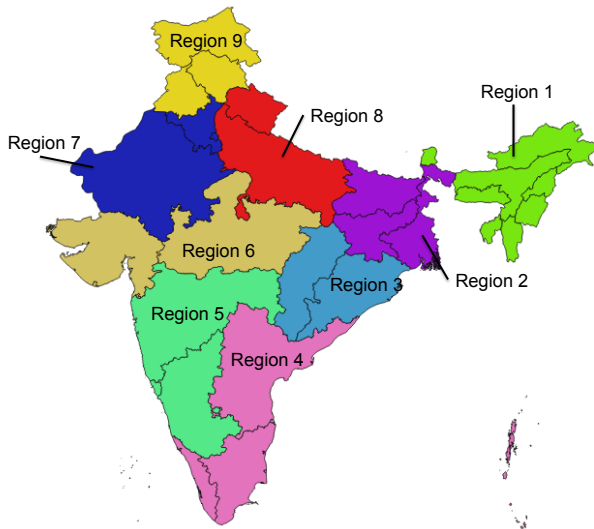
India Total Emissions



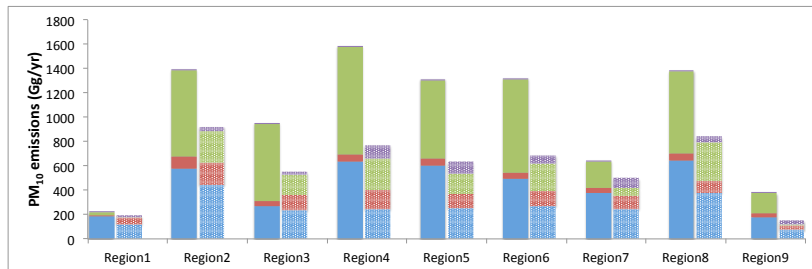
Solid: EDGAR, Dash: REAS, Diamond: Pandey et al.

Blue: CO, Red: SO₂, Yellow: NO_x, Green: PM₁₀, Brown: CO₂

India Regions



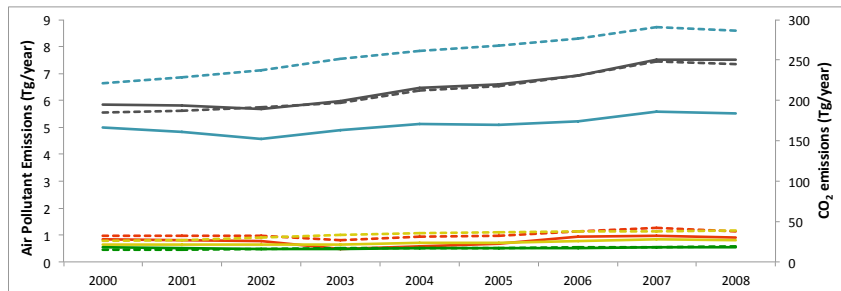
India Regional PM₁₀ Emissions



Left: EDGAR, Right: REAS

Red: industry, Purple: transport, Green: power, Blue: residential

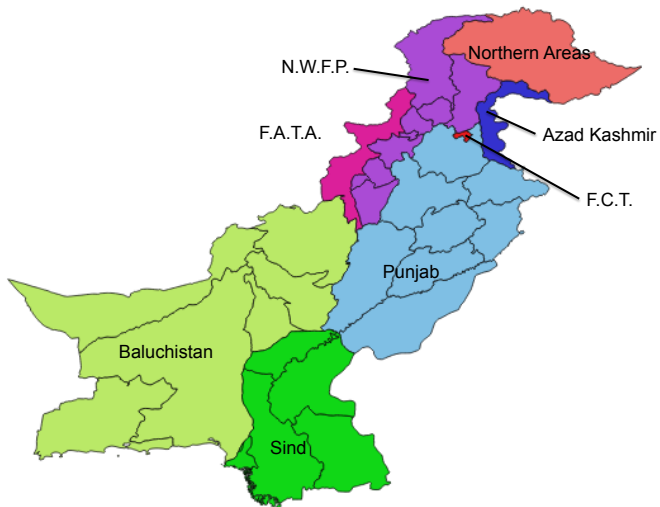
Pakistan Total Emissions



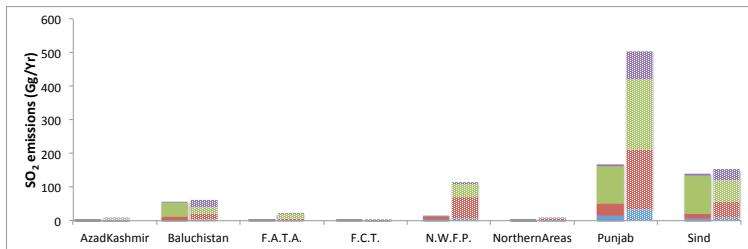
Solid: EDGAR, Dash: REAS

Blue: CO, Red: SO₂, Yellow: NO_x, Green: PM₁₀, Brown: CO₂

Pakistan Regions



Pakistan Regional SO₂ Emissions

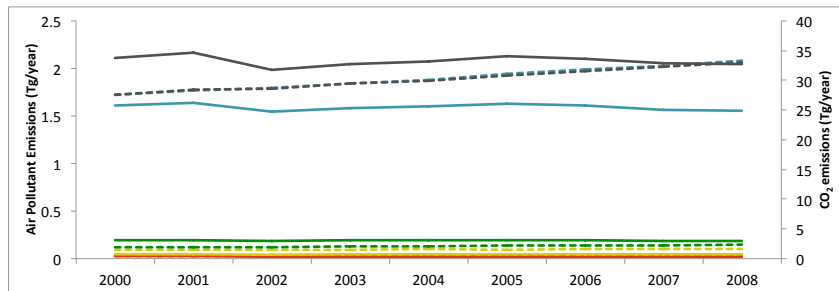


Left: EDGAR, Right: REAS

Red: industry, Purple: transport, Green: power, Blue: residential



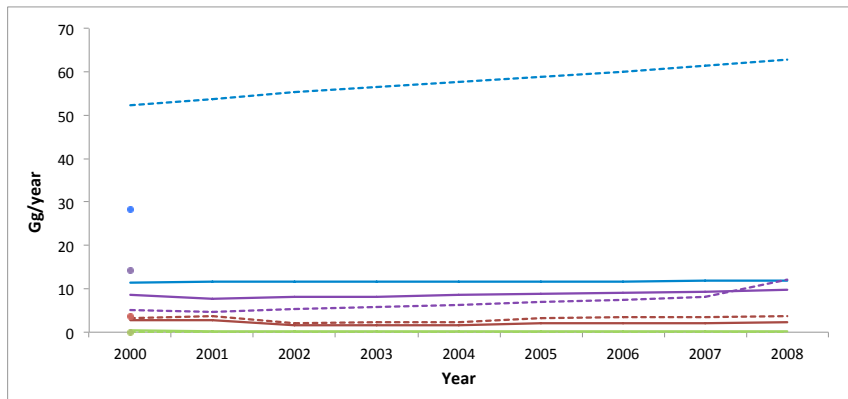
Nepal Total Emissions



Solid: EDGAR, Dash: REAS

Blue: CO, Red: SO₂, Yellow: NO_x, Green: PM₁₀, Brown: CO₂

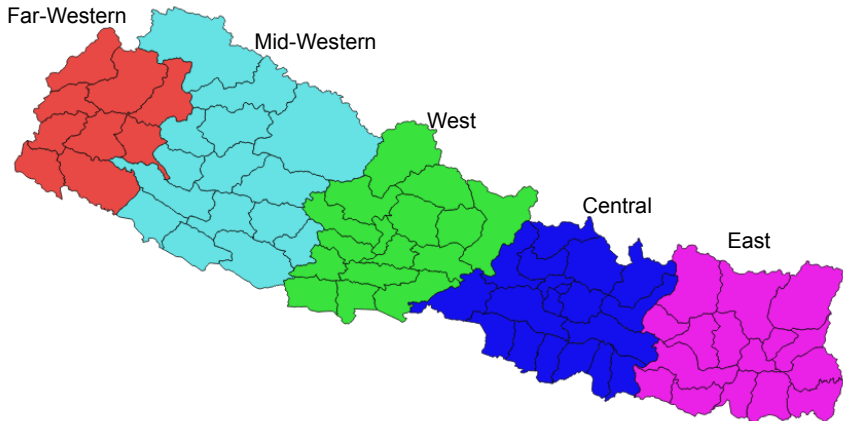
Nepal Sectoral NO_x Emissions



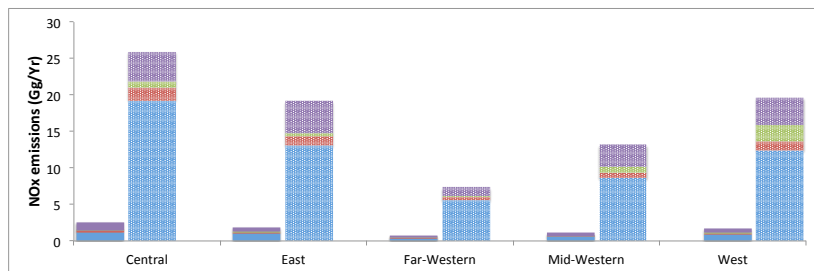
Solid: EDGAR, Dash: REAS, Circle: MALÉ

Red: industry, Purple: transport, Green: power, Blue: residential

Nepal Regions



Nepal Regional NO_x Emissions

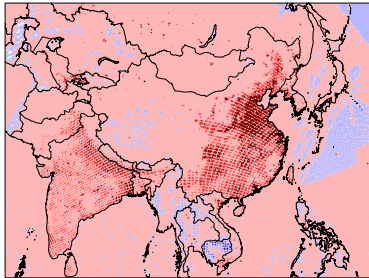


Left: EDGAR, Right: REAS

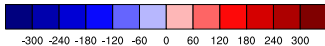
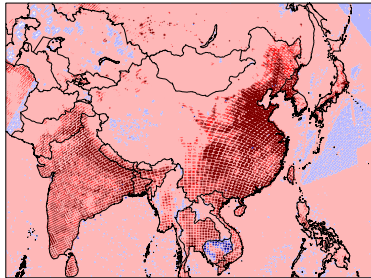
Red: industry, Purple: transport, Green: power, Blue: residential

Spatial Distribution: REAS - EDGAR PM₁₀ and CO

PM₁₀ kg km⁻² month⁻¹

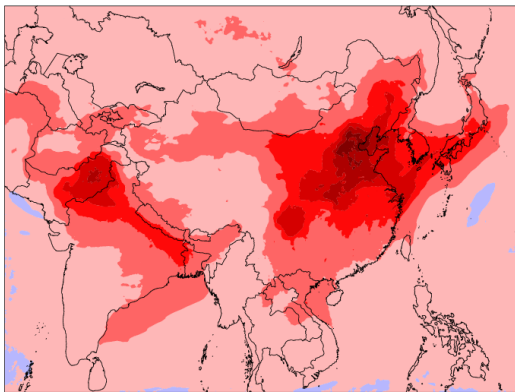


CO kg km⁻² month⁻¹



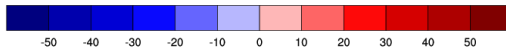
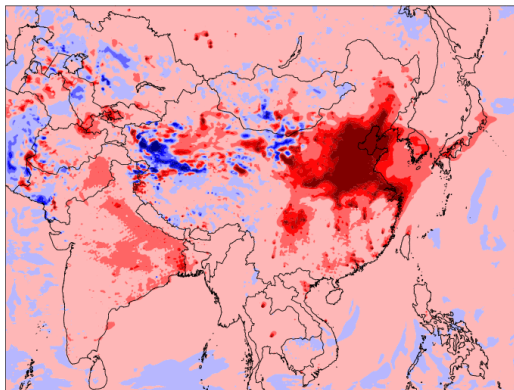
REAS - EDGAR

Impacts on Modeling: REAS - EDGAR O₃



O₃ difference (ppbv)

Impacts on Modeling: REAS - EDGAR PM₁₀



PM₁₀ difference (ug m⁻³)

Conclusion

- Large discrepancies exist among inventories both in magnitude and spatial distributions.

Conclusion

- Large discrepancies exist among inventories both in magnitude and spatial distributions.
- Sectors responsible for the discrepancy varies based on species and location.

Conclusion

- Large discrepancies exist among inventories both in magnitude and spatial distributions.
- Sectors responsible for the discrepancy varies based on species and location.
- Model results are influenced significantly by the difference in emissions used as inputs.

Acknowledgments

My Group Members at Emory

- Hankyul Kim, Rita Korobkov, Marcus Trail
- Cindy Young, Qianru Wu, Min Zhong

Collaborators

- Jun-ichi Kurokawa, Toshimasa Ohara
- Greet Maenhout, Ajay Nagpure
- Qiang Zhang, Yu Zhao

Funding

- Energy Foundation, NSF, Emory University

Conclusion

- Large discrepancies exist among inventories both in magnitude and spatial distributions.
- Sectors responsible for the discrepancy varies based on species and location.
- Model results are influenced significantly by the difference in emissions used as inputs.

Questions?