

Chesapeake Bay Stormwater Listening Session

Georgetown, DE

December 15, 2010

www.epa.gov/npdes/stormwater/rulemaking



U.S. Environmental Protection Agency



Purpose of Today's Session

- On December 28, 2009, EPA announced national rulemaking to strengthen its stormwater program.
- One of the preliminary considerations included exploring specific stormwater provisions to protect sensitive areas.
- Today's webcast will provide the public with an early opportunity to learn about and comment on stormwater requirements within the Chesapeake Bay watershed.

Agenda

- EPA introduction and short presentation
 - Purpose of Today's Session
 - Regulations
 - Chesapeake Bay Watershed Challenges
 - Stormwater Challenges
 - Preliminary Considerations to Address Challenges
 - Environmental Justice considerations
- Oral comments by participants and general discussion of issues

The Clean Water Act: *The Objective*

“to restore and maintain the chemical, physical, and biological integrity of the Nation’s waters.”



The Clean Water Act: *The Goals*

- eliminating the discharge of pollutants into navigable waters; and
- achieving interim water quality that will protect fish, shellfish, and wildlife while providing for recreation (“fishable and swimmable”) in and on the water whenever attainable.

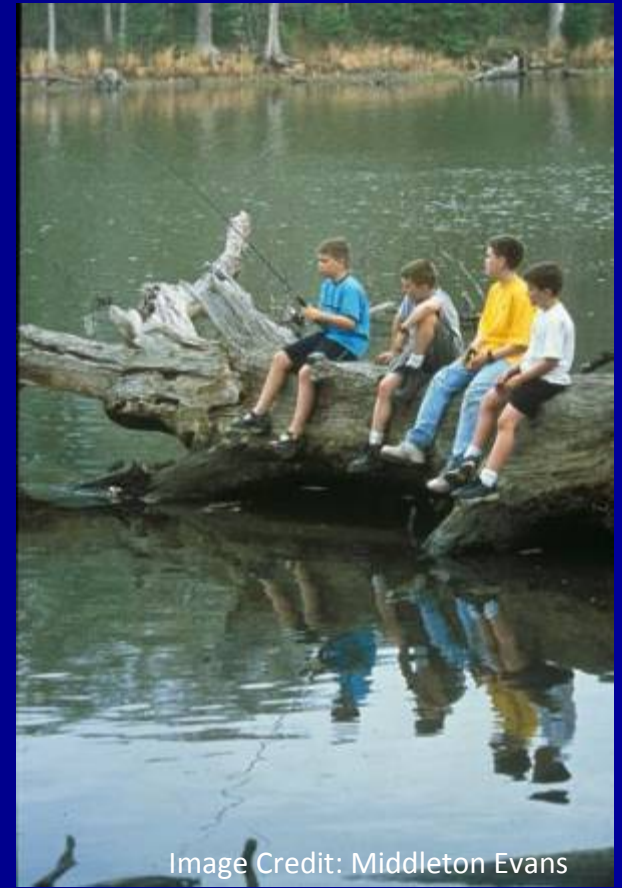


Image Credit: Middleton Evans

The Clean Water Act: *The Tools*

National Pollutant Discharge Elimination System (NPDES) permitting program authorizes and regulates certain discharges (§ 402), including stormwater discharges.



402(p) of Clean Water Act

- Section 402(p) established phased approach to permitting certain stormwater discharges
- Section 402(p)(4) required EPA to establish permit application requirements for industrial and medium and large municipal separate storm sewer discharges (100,000 population and greater)
- Section 402(p)(5) required EPA to
 - conduct a study to identify other discharges, assess their pollutant loadings and establish methods to control the pollutants and
 - submit the results in a report to Congress.
- Section 402(p)(6) provides authority for EPA to regulate other stormwater sources, based on the study, “to protect water quality”

Phase I Stormwater Regulations

- Finalized in 1990
- Regulates stormwater discharges from:
 - Medium and large municipal separate storm sewer systems (MS4s) in areas that serve 100,000 or more people
 - 10 categories of industrial operations including construction activity disturbing 5 acres or more
- Established:
 - Permit application requirements and deadlines
 - Requirements for a municipal stormwater management plan
 - Permit exclusion for industrial activities that are not exposed to stormwater

Phase II Stormwater Regulations

- Finalized in 1999
- Defines “small MS4” as any MS4 that is not “medium” or “large and includes systems such as large prison or hospital complexes, highways, public universities and military bases
- Regulates stormwater discharges from:
 - Small MS4s,
 - Located in an “urbanized area” as defined by the Bureau of Census, or
 - Designated by the NPDES permitting authority on a case-by-case basis.
 - Construction activities disturbing between one and five acres
- Requires NPDES permits for these discharges

Phase II Stormwater Regulations (Cont'd)

- Established six minimum control measures for small MS4 permits:
 1. Public Education & Outreach
 2. Public Participation/Involvement
 3. Construction Site Runoff Control
 4. Illicit Discharge Detection & Elimination
 5. Post-Construction Runoff Control
 6. Pollution Prevention/Good Housekeeping

MS4s in the Chesapeake Bay watershed

Pennsylvania, West Virginia, Delaware and New York

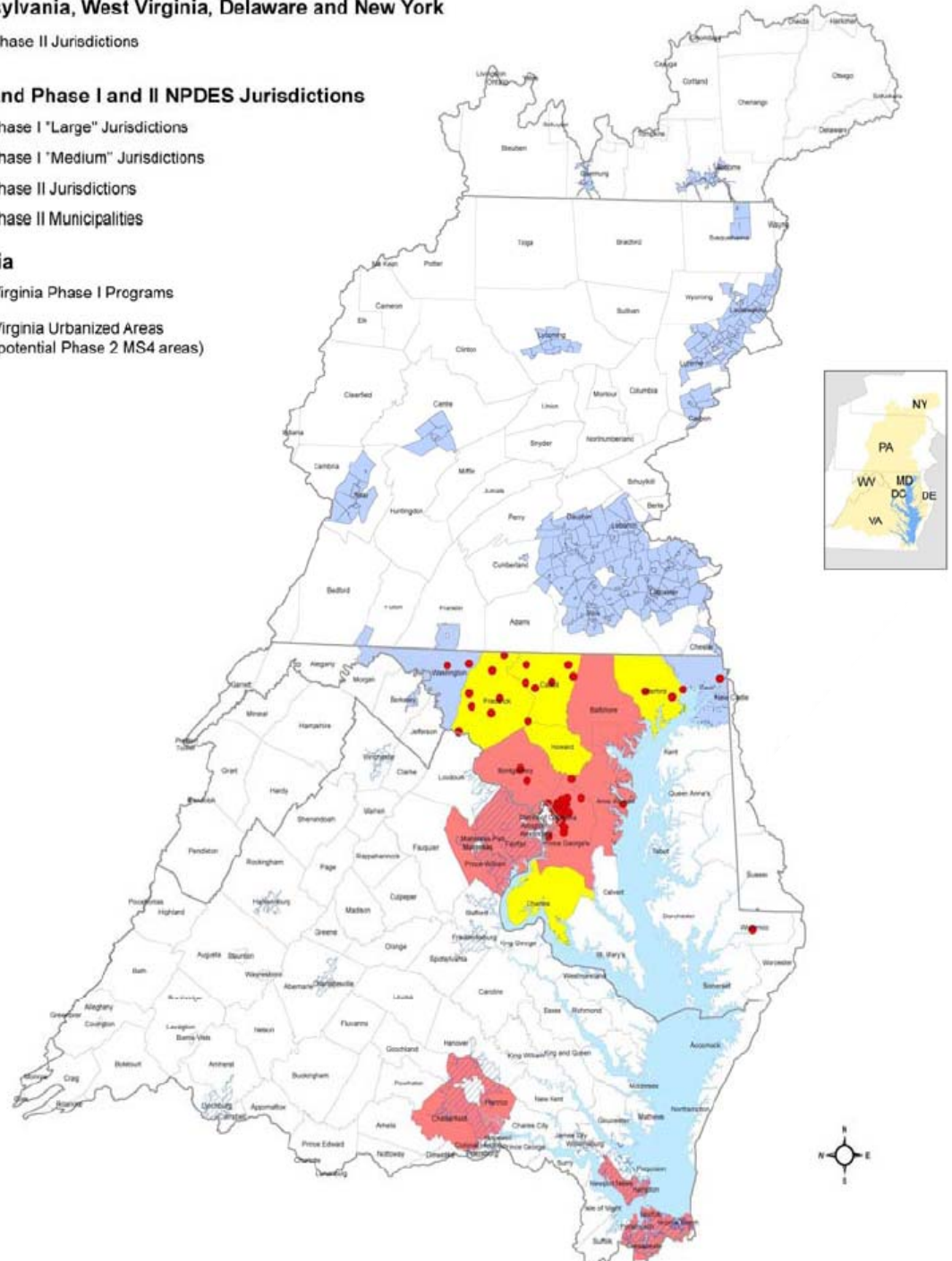
Phase II Jurisdictions

Maryland Phase I and II NPDES Jurisdictions

- Phase I "Large" Jurisdictions
- Phase I "Medium" Jurisdictions
- Phase II Jurisdictions
- Phase II Municipalities

Virginia

- Virginia Phase I Programs
- Virginia Urbanized Areas (potential Phase 2 MS4 areas)



Number of Stormwater MS4 Permittees (as of Summer 2009)

	DC		DE		MD		NY	
Stormwater Permit Type	Bay-wide	DC-wide	Bay-wide	State-wide	Bay-wide	State-wide	Bay-wide	State-wide
MS4 Phase I	1	1	1	14	11	11	0	1
MS4 Phase II	0	0	0	3	82	82	34	502
Total	1	1	1	17	93	93	34	503
% Permittees in the Bay	100%		6%		100		7%	

	PA		VA		WV		Total	
Stormwater Permit Type	Bay-wide	State-wide	Bay-wide	State-wide	Bay-wide	State-wide	Bay	State
MS4 Phase I	0	2	11	11	0	0	24	40
MS4 Phase II	206	727	75	90	3	45	400	1449
Total	206	729	86	101	3	45	424	1489
% Permittees in the Bay	28%		85%		7%		29%	

Stormwater In the News



Skirting stormwater rules

A plan for a shopping center Remington fails a key environmental test
By Tina Cavali

It wouldn't be surprising to find that a developer's plan for a shopping center in Remington, Md., failed a key environmental test. The plan for the proposed 20th Street Station, a 1.5-million-sq-ft shopping center, failed a key environmental test because it didn't meet the requirements of the state's stormwater management rules. The plan for the shopping center, which is located on the site of a former gas station, failed a key environmental test because it didn't meet the requirements of the state's stormwater management rules. The plan for the shopping center, which is located on the site of a former gas station, failed a key environmental test because it didn't meet the requirements of the state's stormwater management rules.

THE WASHINGTON SUN
Storm over storm water
Our view: Might requiring runoff cause harm by discouraging redevelopment? The evidence is not compelling enough to weaken — or even delay — pending rules

January 28, 2010

Cleaning up the Chesapeake Bay is not a clean job. Everyone wants things to be neat and tidy, but reality wants to be messy with the costs.

The grand debate of this phenomenon can be heard in the halls of the state House. Here, some environmental groups are pushing for a revision or perhaps delay in adopting new rules on managing the water that runs off property after a storm. They are not opposed to cleaning up the Chesapeake Bay, or even tighter controls over storm water runoff.

Link to Google

Environmental Regulation
Learn about saving energy from the experts. Enterprise Wise Savings!
enwiderlectric.com

Earn up to 2 FREE NIGHTS
When you register to Cleanse 1!

Maggi Mcintosh
Parks in
Princess Anne

Md. environmentalists split over stormwater pollution rules

More than 30 Maryland environmentalists—including a former governor, a former U.S. senator and a former congressman—held a press conference today in Annapolis to denounce efforts to revise rules on pollution flowing to the Chesapeake Bay through storm sewers.

The event, led by former U.S. Senator Joseph Tydings (D-Md.), was another sign of a fracturing in Maryland's green community over an arcane area of environmental law.

This year, land developers were supposed to face a new set of rules defining the ways that water could run off new or re-developed properties. Maryland would require them to do more to stop that water, and filter it naturally. Often, stormwater rushes off concrete and rooftops, carrying road grease and algae-feeding chemicals into the bay.

But developers objected to this plan, saying it was so restrictive that it would stop growth—or re-direct it into undeveloped areas, away from "smart growth" sites near urban cores.

To head off a battle, Del. Maggie McIntosh (D) brokered a compromise between developers, local governments, and environmental groups. The two at the table, reportedly, the Chesapeake Bay Foundation and 1,000 Friends of Maryland.

Under that deal, some un-finished projects could be "grandfathered" in, built under the old stormwater rules. If they received the right kind of permission. Also, some projects could face looser restrictions in "in-fill" developments.

At today's press conference, activists said that was giving developers too long a leash.

Richmond Times-Dispatch
News Business Opinion Sports Entertainment Life Weather Obituaries Video Services

Search Clones, Photos, Video & Keywords [SEARCH] This Search powered by YIMBO

SEARCHING VIDEO 647 Videos Like 647 Easy Fan

News

Chesapeake Bay effort targets polluted runoff in Richmond

By MICHELLE HARTY | TIMES-DISPATCH STAFF WRITER
PUBLISHED July 16, 2012

2 Comments | Post a Comment

Richmond, Va. — Plan that runs into

The Patriot-News
Thursday, October 14, 2010

The Patriot-News
Click here to go back to search results
Click here for a printer-friendly version of this article

Land Looks plans for smart growth
up all based company works with the community to help it understand the full impact of its land use.

Land Use of Smart Growth will greatly help to avoid the kind of growth that is not in the best interests of the community. The results are "an important step in the process of understanding the full impact of its land use."

CHESAPEAKE BAY JOURNAL

Please confirm your Bay Journal subscription - Click Here to Learn More

Recent EPA enforcement actions intended to send message to polluters

The goal is to ensure that companies and the field operators, and others, are aware

For many two decades, Bay restoration efforts have been built on voluntary efforts and cooperation, the cornerstone of the Chesapeake Bay Program. But as the pace of change program has been slower than what was once hoped, the regulatory reach of state and federal agencies has increased.

But federal officials believe the full impact of regulations has never been realized, as programs that would give on paper are often not enforced in the field.

Substance 2012 changing, Powers in Lancaster County, Pa., and the Shenandoah Valley sectors had their operations impacted, wastewater treatment plants have been closed, stormwater managers get warning letters, noncompliance were fined, and an polluters were forced to make improvements.

The EPA this year launched an initiative that would require its field enforcement activity throughout the Bay, and in that it released a 20-page Chesapeake Bay Compliance and Enforcement Strategy that outlined a targeted approach in reaching down on polluters.

"This will use all available enforcement mechanisms to address significant violations, and to ensure compliance, consistent compliance with the federal environmental laws," the strategy promised.

Caroline Nursing & Rehab Center
539 Kent Avenue • Denton, MD 21029
carolinenursing.org • carolinerehab.org

The Gables
Home • Home • Local/Weekend

Talbot ponders Md. stormwater regulations

News • Environment • People

Published: Monday, July 16, 2012 11:01 am
By: Talbot County News Staff | 4 Comments

By Talbot County News Staff, staff has led a discussion on the new stormwater regulations. The Talbot County Council will at least consider measures to repeal the county's existing stormwater code and replace it with the state's model.

CROSS COUNTRY
LITHIUM GOLF

• Delaware Valley
• Full Service
• Group Services
• Food & Beverage
• Event Planning
• Corporate & Business Events

Stormwater Challenges

1. Increased amounts of stormwater and pollutants...



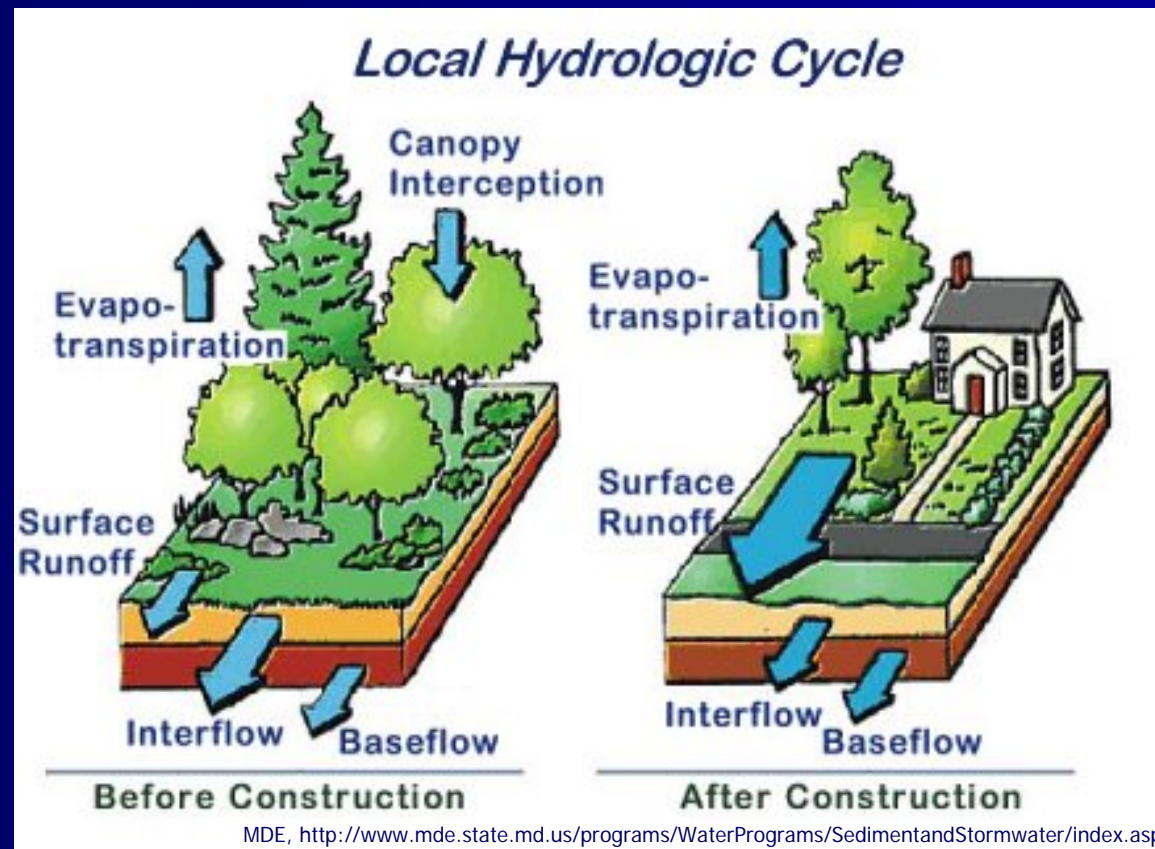
2. Enter the municipal separate storm sewer system (MS4) or is directly discharged to a nearby waterbody...



3. Which can lead to stream degradation and increased pollutants entering waterbodies



Alteration of Hydrologic Cycle

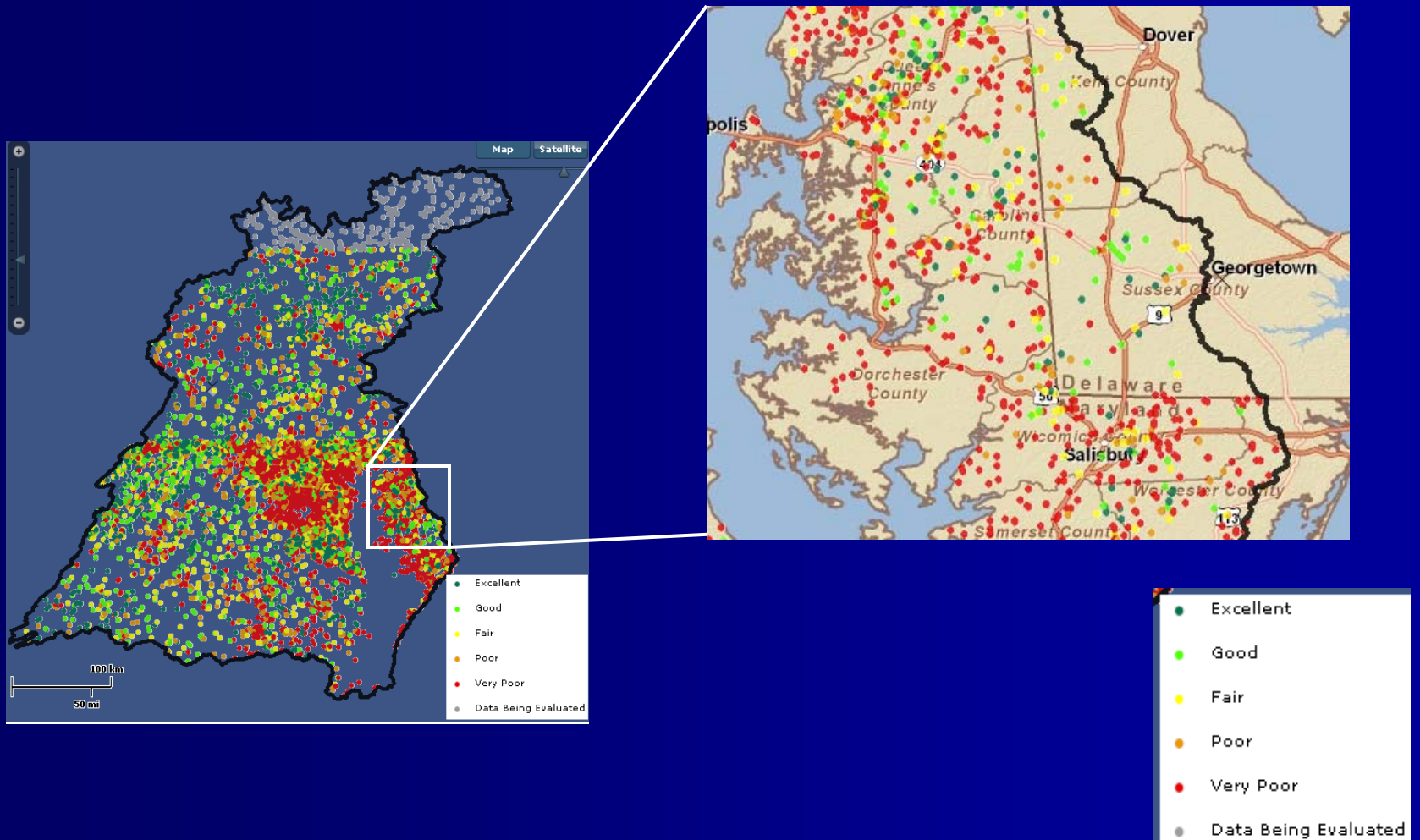


The Chesapeake Bay Watershed

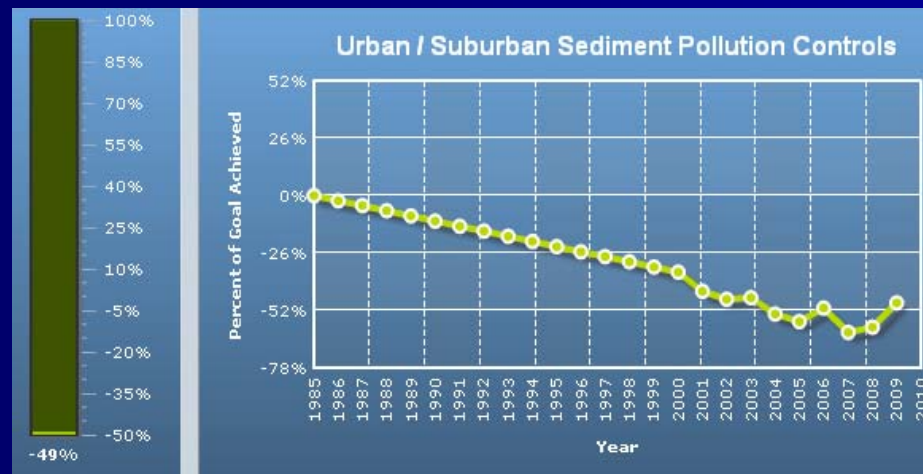
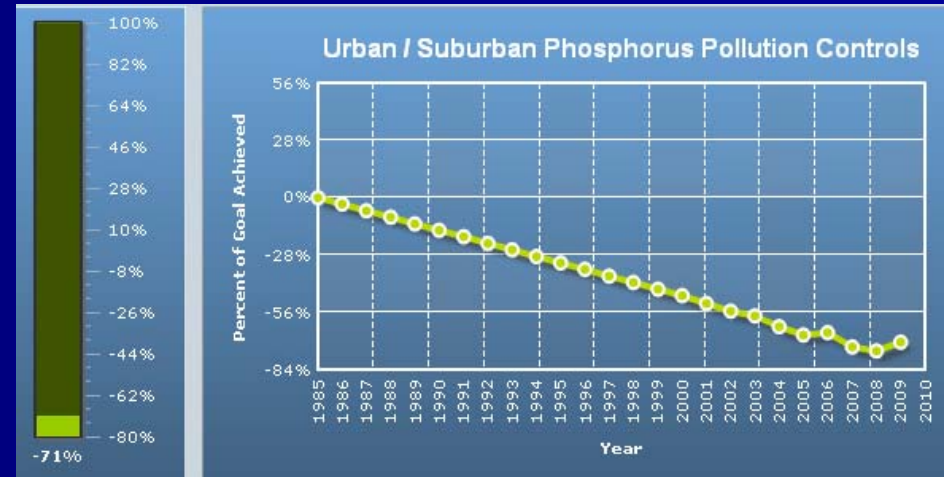
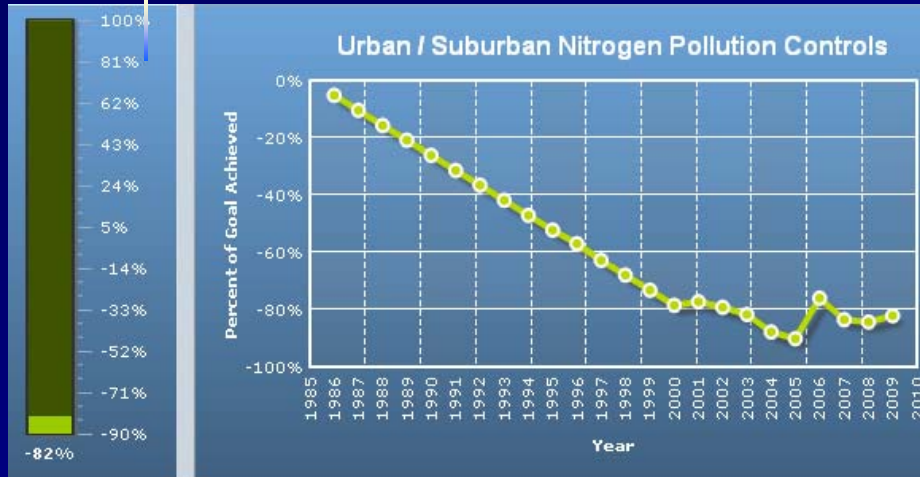
- Over 64,000 square miles of land drain into the Chesapeake Bay or its tributaries
- Major urban areas include:
 - Baltimore, MD
 - Harrisburg, PA
 - DC
 - Annapolis, MD
 - Richmond, VA
 - Hampton Roads, VA (Norfolk-Virginia Beach)



Chesapeake Bay Watershed: Stream Health



Chesapeake Bay Watershed: Stormwater Challenges



Chesapeake Bay Watershed Stormwater Challenges (Cont'd)

From the Office of Inspector General Report (2007)*:

- “New development is increasing nutrient and sediment loads at rates faster than loads are being reduced from developed lands.”
- “To meet the reductions in loads laid out by the jurisdictions, the adaptive management approach of the federally mandated municipal stormwater program needs to be accelerated.”



Photo Credit: Chesapeake Bay
Program www.chesapeakebay.net

**Development Growth Outpacing Progress in Watershed Efforts to Restore the Chesapeake Bay*
<http://www.epa.gov/oig/reports/2007/20070910-2007-P-00031.pdf>

The Relationship between this Stormwater Rulemaking and the Chesapeake Bay TMDL



- The Chesapeake Bay Total Maximum Daily Load (TMDL) sets limits on the amount of nitrogen, phosphorus, and sediment that can be discharged into the Bay and each of its tributaries by different types of pollution sources.
- Stormwater is one of these sources.

The Relationship between this Stormwater Rulemaking and the Chesapeake Bay TMDL (Cont'd)

- Regulatory considerations included in the stormwater rule will help decrease the amounts of nitrogen, phosphorus, sediment, and other pollutants that are found in stormwater.
- Current activities
 - Review of Watershed Implementation Plans (WIPs)
 - Listening Sessions

Preliminary Considerations to Address these Challenges



- Considerations are not mutually exclusive.
- EPA signed a settlement agreement with the Chesapeake Bay Foundation and others promising to take a number of actions to restore and preserve the Chesapeake Bay.

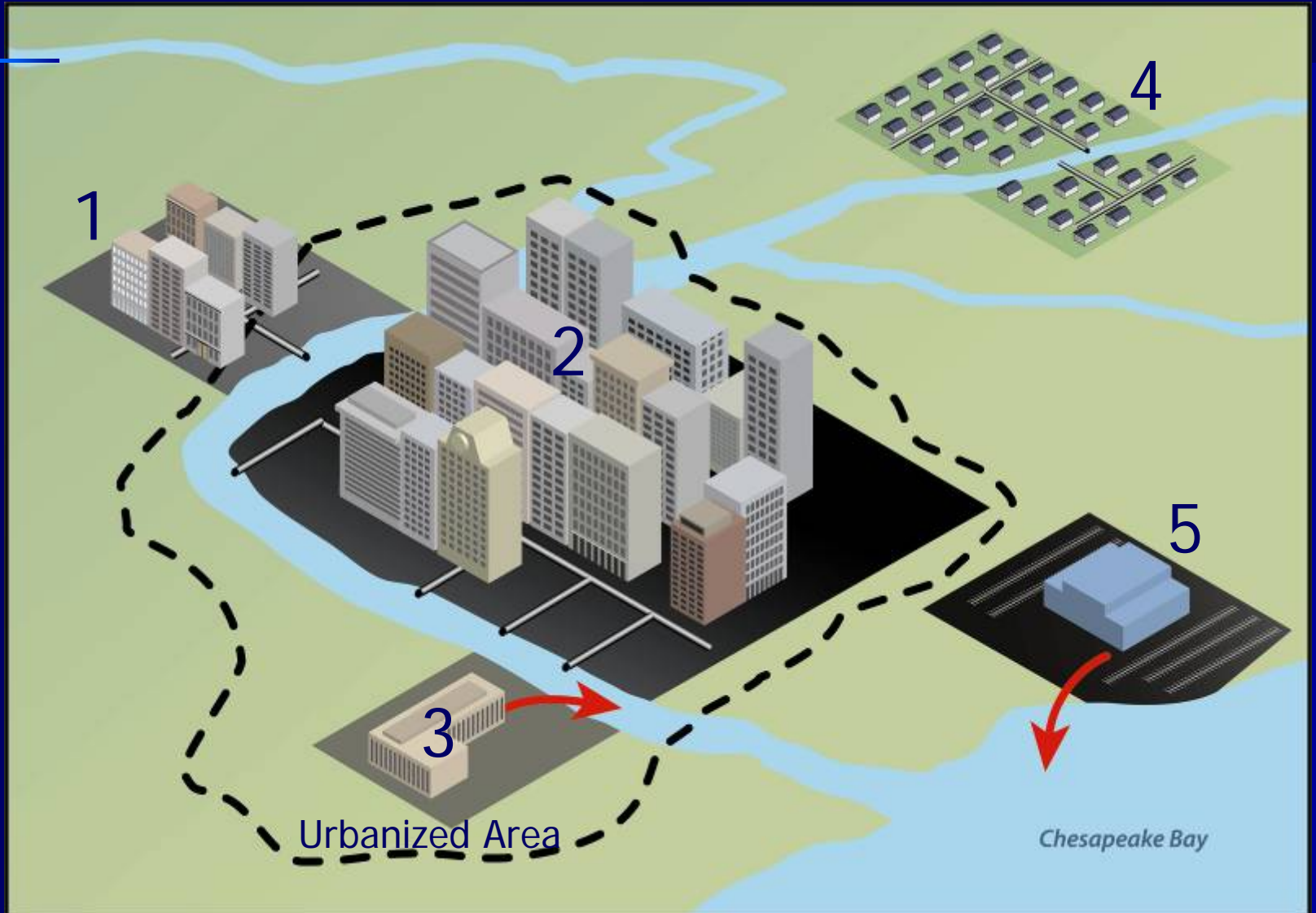
Designate Additional Discharges to be Regulated

- Expanding the number of regulated MS4 dischargers
- Designating additional discharges
- Regulating stormwater discharges that are currently unregulated



Photo Credit: Chesapeake Bay Program
www.chesapeakebay.net

Types of Discharges



Require Additional Chesapeake Bay-only MS4 Provisions

- Requirements related to turf management, pesticide usage, fertilizer usage, buffers, etc.



Photo Credit: Chesapeake Bay Program
www.chesapeakebay.net

Fertilizer Restrictions in the Chesapeake Bay Watershed

- Phosphorus Restriction: Annapolis, MD
 - limits the use and sale of residential lawn fertilizer to help restore the Bay.
 - applies to all land located in the city limits and all land owned by the city.
 - As of January 1, 2010, city businesses are not allowed to stock phosphorus-containing lawn fertilizers on their shelves.

Fertilizer Restrictions and Water Quality Improvements

- Phosphorus Restriction: Ann Arbor, MI (2007)
 - Limited application timeframes
 - Limits on application sites
 - No phosphorus fertilizers may be used except in a few cases
 - Requires commercial applicators to register with the City and report usage annually
 - Inspections and educational component

Fertilizer Restrictions and Water Quality Improvements (Cont'd)

~Results~

- Study showed that phosphorus levels in the Huron River decreased an average of 28% after the ordinance was adopted.

(Lehman et al. *Reduced River Phosphorus Following Implementation of a Lawn Fertilizer Ordinance*. Lake and Reservoir Management. 2009.)

Establish New and Redevelopment Standards

- Standards for discharges from newly developed and redeveloped sites.
- Examples of existing standards are based on:
 - Minimum storm volume to be retained on site (e.g. first 1", 95th percentile storm event).
 - Limiting total impermeable surface
 - Percent removal of pollutants (e.g. 80% TSS)

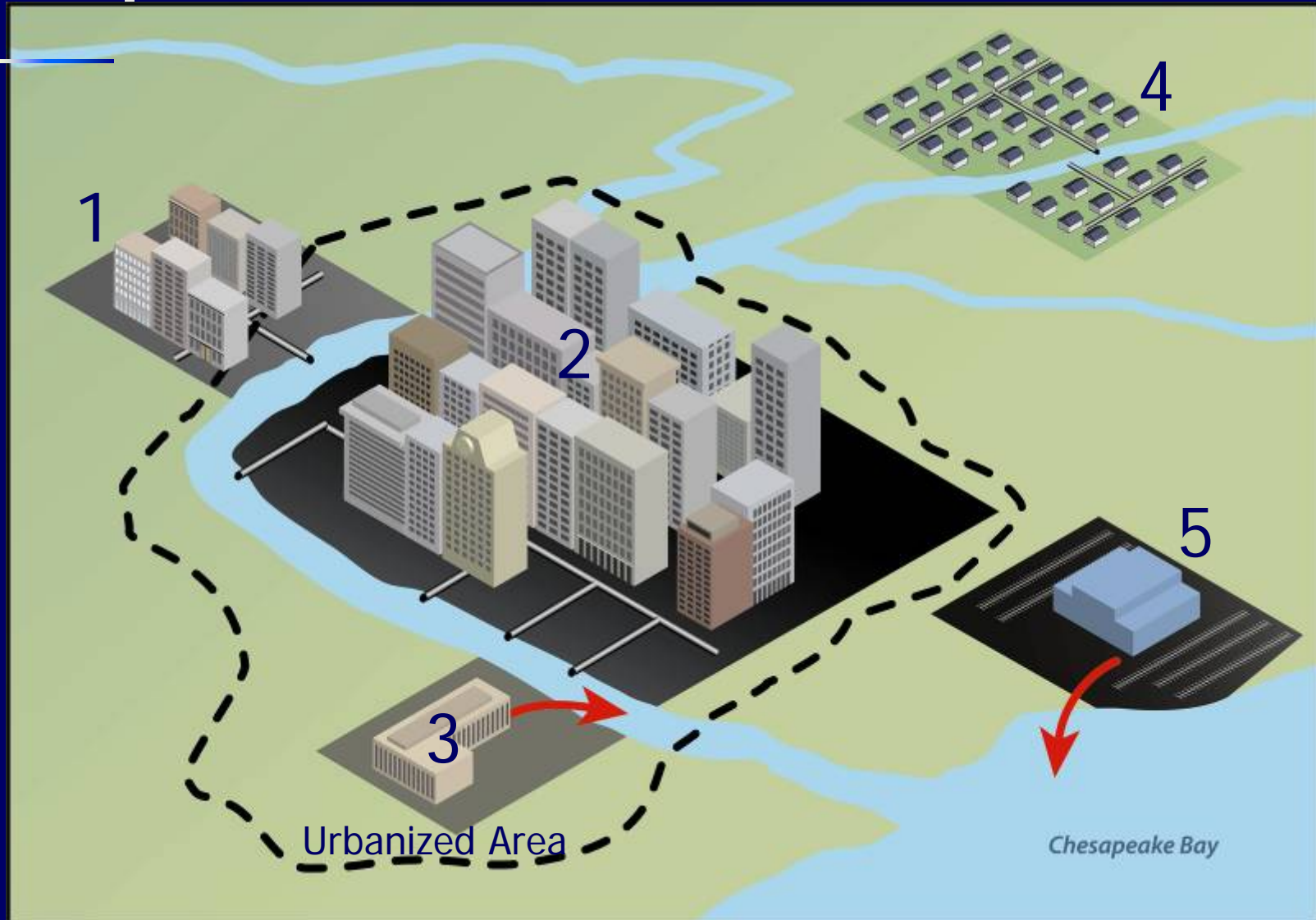


Photo Credit: Chesapeake Bay Program
www.chesapeakebay.net

Examples of 95th Percentile Storm Event in the Chesapeake Bay

City	95 th Percentile Event Rainfall Total (in)	City	95 th Percentile Event Rainfall Total (in)
Washington, DC	1.7	Williamsport, PA	1.4
Baltimore, MD	1.6	Lynchburg, VA	1.5
Salisbury, MD	1.7	Norfolk, VA	1.7
Binghamton, NY	1.2	Richmond, VA	1.7
Elmira, NY	1.2	Romney, WV	1.2
Harrisburg, PA	1.4		

Performance Standard Implementation



Green Infrastructure Approaches Mimic Natural Hydrologic Site Conditions

Infiltration ~ Evapotranspiration ~ Capture & Use



- Protecting areas with natural ecological functions
- Amended soils
- Impervious cover removal
- Bioretention
- Permeable pavements
- Green roofs
- Cisterns & rain barrels
- Trees & expanded tree boxes
- Reforestation & restoration
- Infill & redevelopment
- Parking & street designs
- Water conservation

Examples of Green Infrastructure

Vegetated Buffers



Pocket Wetlands



Rain Barrels

Green Walls



Grass Swales



Parking Lot Infiltration Areas



Green Roofs



Rain Gardens



Permeable and Porous Pavements



Planters



Bioinfiltration



Curb Extensions



Green Infrastructure Benefits

- Cleaner water
- Stable hydrology/baseflow maintenance
- Reduced flooding
- Climate change mitigation and adaptation
- Cleaner air
- Reduced urban temperatures
- Jobs creation
- Water supply
- Energy savings
- Cost savings
- Habitat protection
- Community benefits (recreation, public health)

Require Retrofitting of Stormwater Management Controls with Improved Stormwater Control Measures

- Consider stormwater requirements for already developed areas
- Make retrofitting structural stormwater controls mandatory for existing development where water quality impairments exist



Summary

- Stormwater can have a significant impact on the Chesapeake Bay and its tributaries if not managed properly.
- The good news: There are a lot of options to improve stormwater management within the Chesapeake Bay watershed.
- Changes to the stormwater regulations will strengthen programs.

What is Environmental Justice?

Environmental Justice is the fair treatment and meaningful involvement of all people regardless of race, color, national origin, or income with respect to the development, implementation, and enforcement of environmental laws, regulations, and policies.



...everyone enjoys the same degree of protection from environmental and health hazards and equal access to the decision-making process to have a healthy environment in which to live, learn, work.

Flooding Concerns

- Many homes and communities in Delaware are built in floodplains.¹
- There are many documented cases of flooding in Delaware.



Seaford, Delaware
June 2006²

¹http://dema.delaware.gov/press_release/Winter_Coastal_Storms_12142006.pdf

²http://www.swc.dnrec.delaware.gov/Shoreline/Documents/Coastal%20Resiliency/inland_communities.pdf

Trash Management



Feedback

- What do you see as effective and ineffective strategies for managing stormwater in your community?
- How can the federal government be a more effective partner in helping to manage stormwater in your community?
- What additional tools and resources would help your efforts to successfully address the impact of stormwater in your community?

Schedule

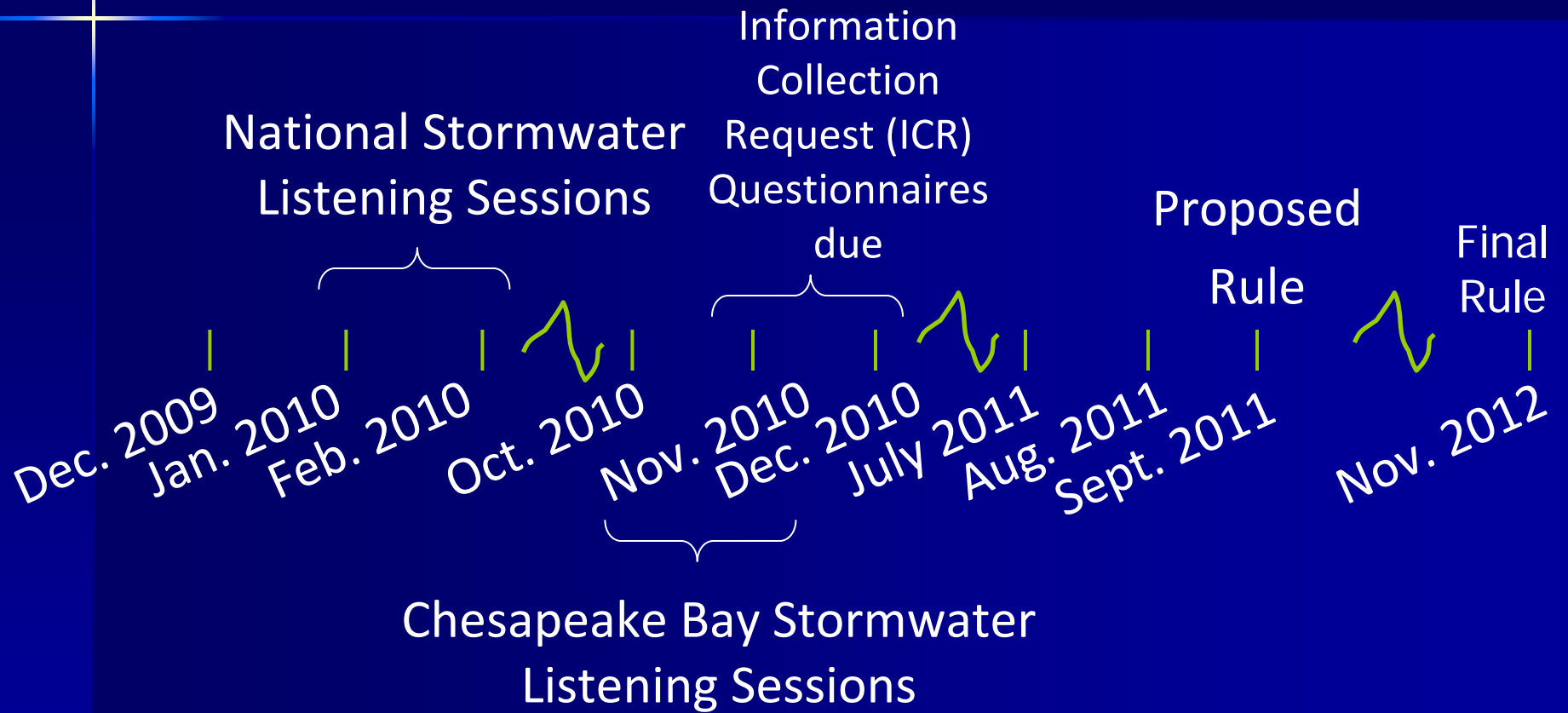




Photo Credit: NOAA's American Coastlines Collection. www.photolib.noaa.gov

Reminders:

- Submit written comments today in person or to www.regulations.gov, Docket ID No. EPA-HQ-OW-2009-0817
- Stormwater Contact: Rachel Herbert
202-564-2649; herbert.rachel@epa.gov

www.epa.gov/npdes/stormwater/rulemaking