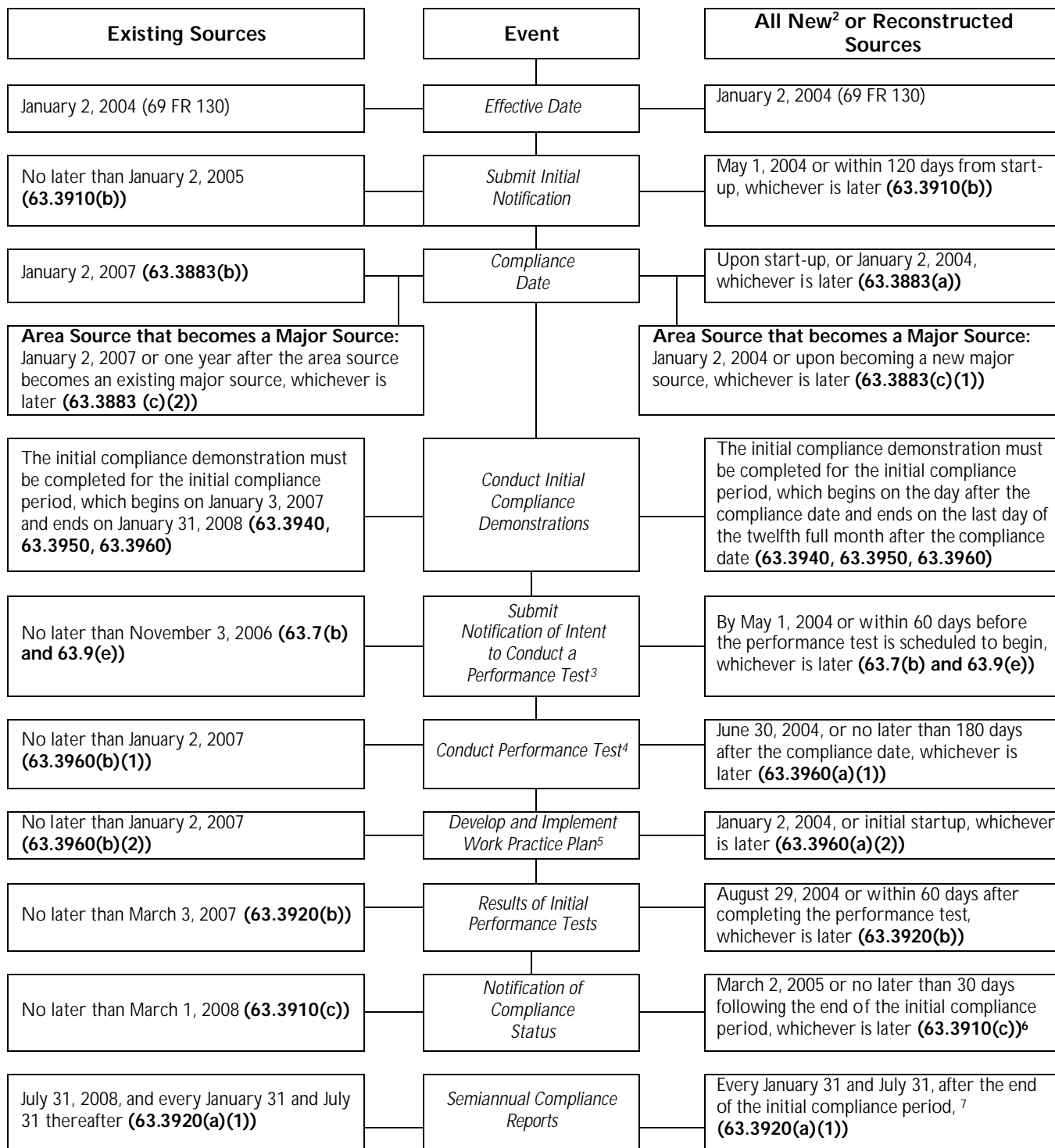


## COMPLIANCE TIMELINE<sup>1</sup> SURFACE COATING OF MISCELLANEOUS METAL PARTS AND PRODUCTS (69 FR 130)



<sup>1</sup> This timeline does not take into account special situations such as compliance extensions.

---

<sup>2</sup> New affected source: an affected source that the construction or reconstruction of which is begun after the August 13, 2002 **(63.3882(c))**.

<sup>3</sup> Applies to add-on controls option only.

<sup>4</sup> Performance tests must be performed for each capture system and add-on control device, except for solvent recovery systems. For solvent recovery systems, the first material balance must be initiated.

<sup>5</sup> Performance tests must be performed for each capture system and add-on control device, except for solvent recovery systems. For solvent recovery systems, the first material balance must be initiated.

<sup>6</sup> The initial compliance period begins on the day after the compliance date and ends on the last day of the twelfth full month after the compliance date **(63.3940, 63.3950, or 63.3960(a)(3) and (b)(3))**.

<sup>7</sup> The initial semiannual report must cover the period beginning on the day after the end of the initial compliance period and ends on June 30 or December 31, whichever date is the first date following the end of the initial compliance period. **(63.3920(a)(1))**