

Note: All equation numbers correspond to the numbers in a separate document entitled “Surface Coating of Wood Building Products NESHAP: Equations”, not to the equation numbers in the final rule.

Surface Coating of Wood Building Products NESHAP (subpart QQQQ) Compliance Options

This document is intended to assist you in determining the compliance option that best suits your wood building product surface coating operation and the steps involved in each compliance option. The subcategories and emission limits for subpart QQQQ are detailed below. After determining your emission limit, go to page 2 to choose your compliance option for each coating operation. Then follow the steps on the following pages to calculate your emission rate.

Subcategories and Emission Limits

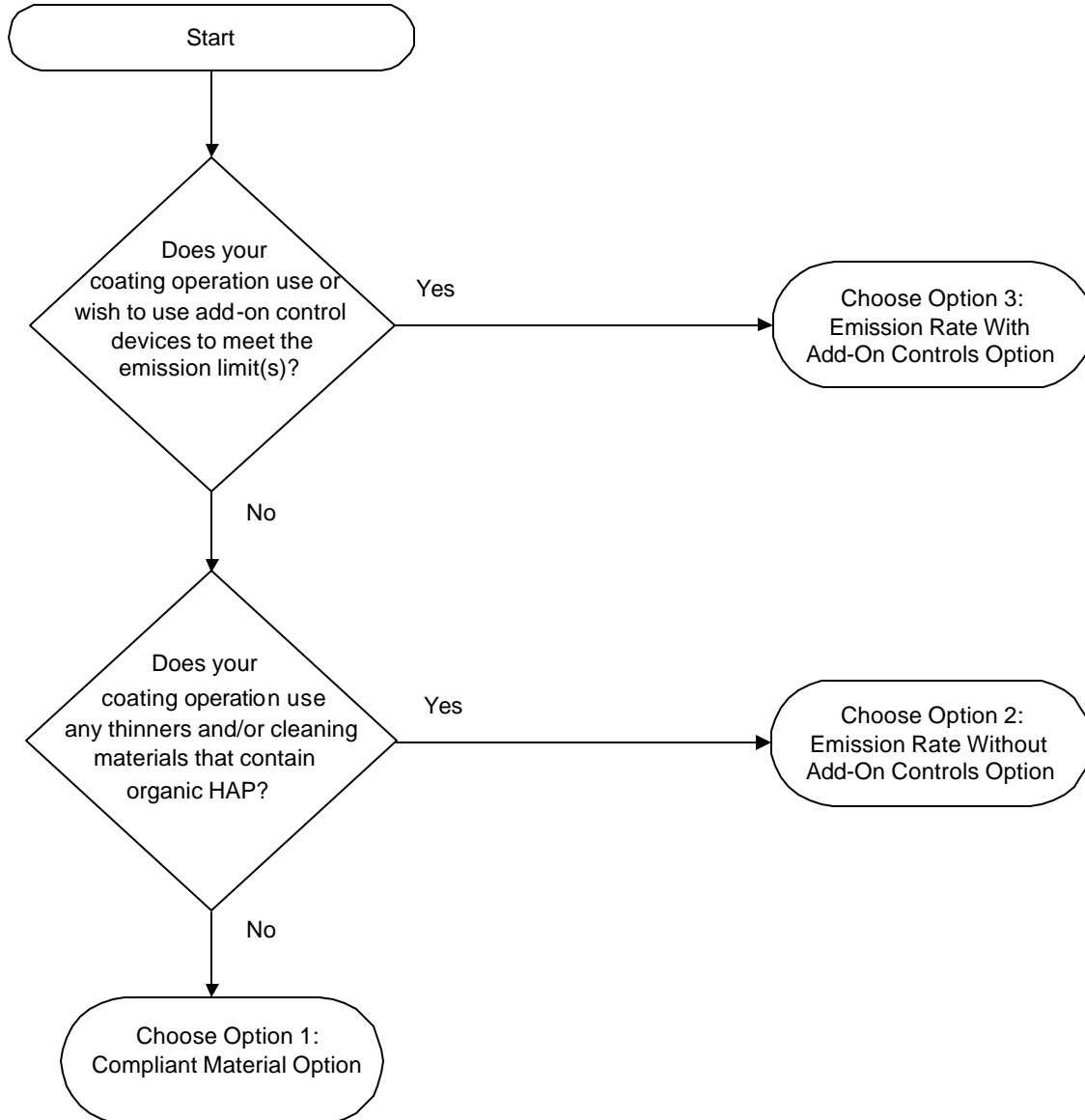
If your affected source applies coatings to products in the following subcategory:	And it is an existing source, the organic HAP emission limit ^a is...	And it is a new or reconstructed source, the organic HAP emission limit ^a is...
Doors, Windows and Miscellaneous	231 (1.93)	57 (0.48)
Flooring	93 (0.78)	0 (0.00)
Interior Wall Paneling and Tileboard	183 (1.53)	5 (0.04)
Other Interior Panels	20 (0.17)	0 (0.00)
Exterior Siding and Primed Doorskins	7 (0.06)	0 (0.00)

^aUnits are grams of HAP/liter of solids (pounds of HAP/gallon of solids)

Note: All equation numbers correspond to the numbers in a separate document entitled “Surface Coating of Wood Building Products NESHAP: Equations”, not to the equation numbers in the final rule.

Compliance Options Flow Diagram

Use this flow chart to choose the compliance option that you will use to demonstrate compliance with the emission limits (listed on the previous page) for each coating operation.



Note: All equation numbers correspond to the numbers in a separate document entitled “Surface Coating of Wood Building Products NESHAP: Equations”, not to the equation numbers in the final rule.

Compliance Option 1 Compliant Material Option

If you choose Option 1 (§63.4691(a)) to demonstrate compliance with subpart QQQQ, you must meet all the requirements of §§63.4740, 63.4741, and 63.4742. To determine compliance, you must perform the following calculations, which are described in more detail in the corresponding paragraph(s) of §63.4741.

§63.4741

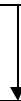
(a) Determine the mass fraction of organic HAP in each coating, thinner, and cleaning material.



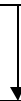
(b) Determine volume fraction of coating solids in each coating.



(c) Determine the density of each coating.



(d) Calculate the organic HAP content of each coating.
(Use Equation 1.)



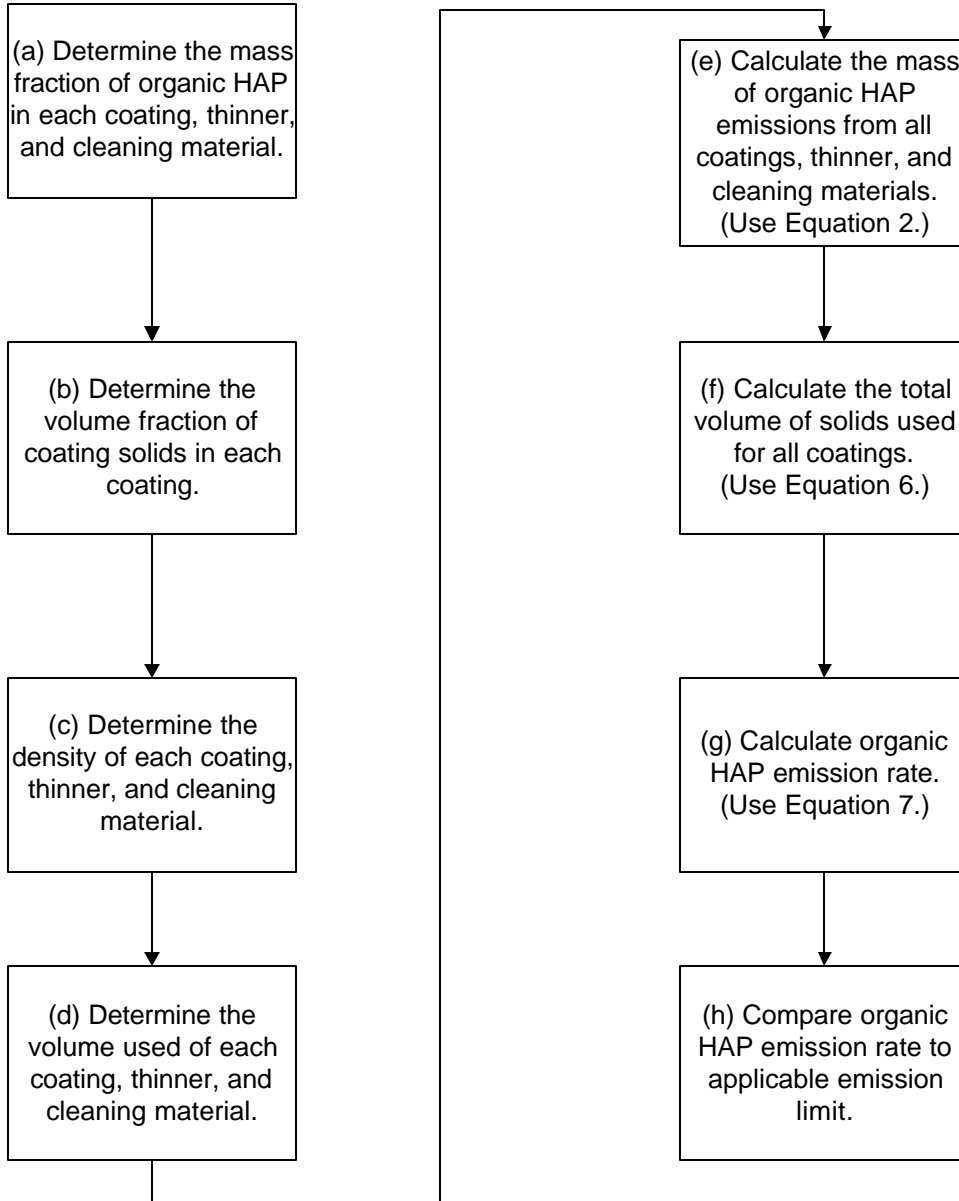
(e) Compare organic HAP content of each coating to applicable emission limit.

Note: All equation numbers correspond to the numbers in a separate document entitled “Surface Coating of Wood Building Products NESHAP: Equations”, not to the equation numbers in the final rule.

Compliance Option 2 Emission Rate Without Add-On Controls Option

If you choose Option 2 (§63.4691(b)) to demonstrate compliance with subpart QQQQ, you must meet all the requirements of §§63.4750, 63.4751, and 63.4752. To determine compliance, you must perform the following calculations, which are described in more detail in the corresponding paragraph(s) of §63.4751:

§63.4751



Note: All equation numbers correspond to the numbers in a separate document entitled “Surface Coating of Wood Building Products NESHAP: Equations”, not to the equation numbers in the final rule.

Compliance Option 3 Emission Rate with Add-On Controls Option

If you choose Option 3 (§63.4691(c)) to demonstrate compliance with subpart QQQQ, you must meet all the requirements of §§63.4760 through 63.4768. You must also demonstrate that all emission capture systems and add-on control devices for the coating operation(s) meet the operating limits required in §63.4692 and that you meet the work practice standards required in §63.4693. To demonstrate compliance, you must perform the following calculations, which are described in more detail in the corresponding paragraph(s) of §63.4761:

§63.4761

