

**FINAL**  
**U.S. ENVIRONMENTAL PROTECTION AGENCY**  
**Region VI**



**Air Monitoring Summary**

**Camp Minden North**

**Start Time: 05-29-2016 1800 - End Time: 05-30-2016 1800**

May 30, 2016 – EPA monitored for seven ambient air pollutants over a 24 hour period at the Camp Minden North air monitoring location. The seven pollutants included carbon monoxide, carbon dioxide, nitrogen oxide, nitrogen dioxide, nitrogen oxides, sulfur dioxide, and fine particulates. Over the 24 hour period, each of these pollutants were detected below EPA’s National Ambient Air Quality Standards or the action benchmark when an air quality standard had not been previously established.

Below is a summary of Camp Minden Air Monitoring Data collected at the location referenced above. The table contains a detailed listing of the following:

- 1 Average reading of each analyte from May 29, 2016 1800 through May 30, 2016, 2016 1800
- 2 Highest measurement of each analyte from May 29, 2016 1800 through May 30, 2016 1800

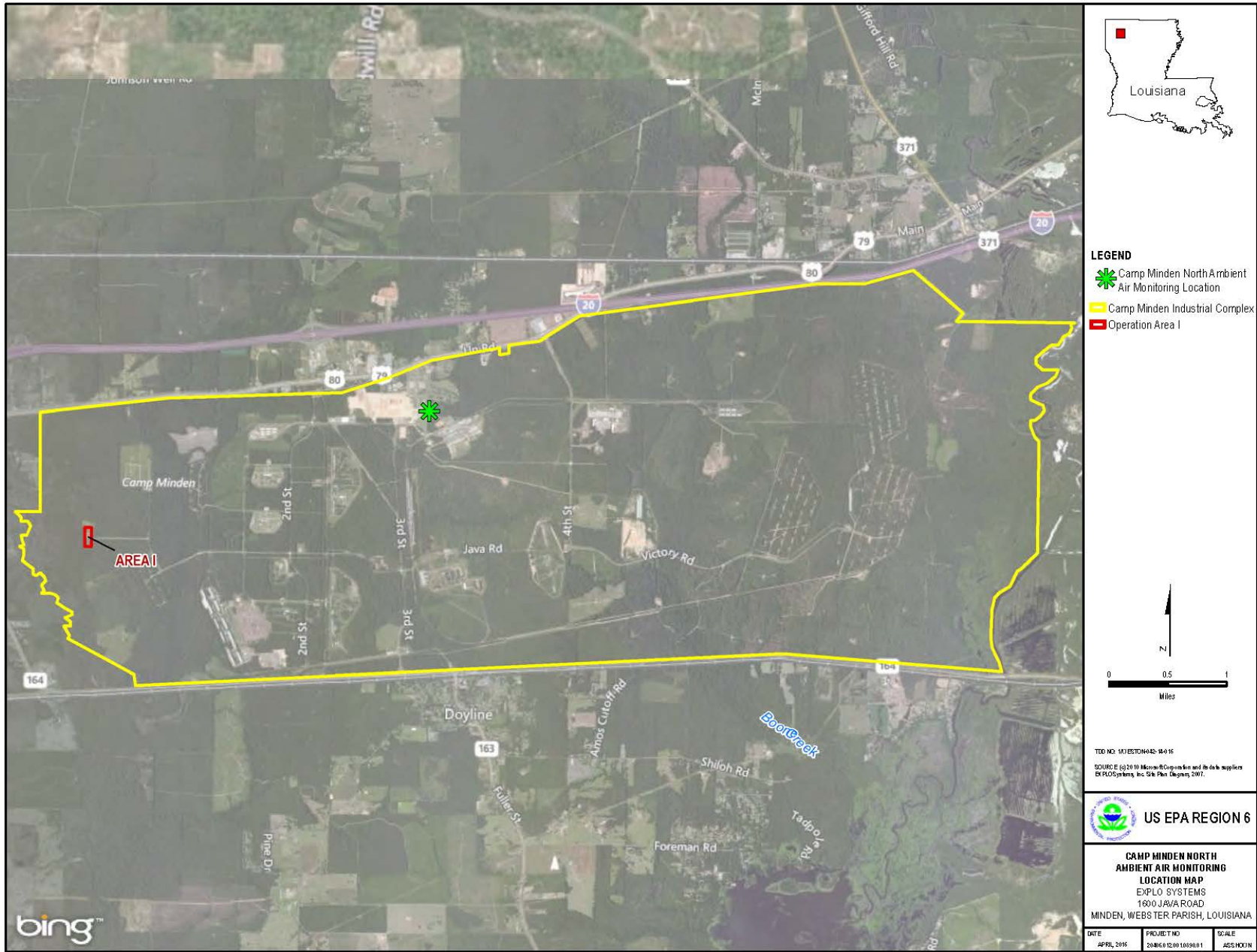
National Ambient Air Quality Standards (NAAQS) of criteria pollutants (CO, NO<sub>2</sub>, SO<sub>2</sub>, and PM<sub>2.5</sub>) are listed with specific time frames and calculation formulas. Please visit NAAQS website for more in-depth information on how these are calculated - <https://www.epa.gov/criteria-air-pollutants/naqs-table>.

\*\* Note: PM<sub>2.5</sub> was captured in 60-min averages. All other analytes were captured in 1-min averages.

**Summary for 30 May 2016 at Camp Minden North**

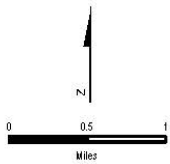
Analyte	Highest Hourly Average Measurement	Highest Measurement	Units	NAAQS Standard
CO	0.544	0.581	ppm	35 (1-hour)
CO <sub>2</sub>	465.7	488.4	ppm	For Monitoring Only
NO	0.9	12.1	ppb	For Monitoring Only
NO <sub>2</sub>	3.3	11.0	ppb	100 (1-hour)
NO <sub>X</sub>	3.6	23.1	ppb	100 (1-hour)
SO <sub>2</sub>	0.5	0.9	ppb	75 (1-hour)
Analyte	Average 24-hour Measurement	Highest Measurement	Units	NAAQS Standard
PM 2.5	18.0	9.1	ug/m3	35 (24-hour)

# Camp Minden North Station Location Map for 30 May 2016



### LEGEND

-  Camp Minden North Ambient Air Monitoring Location
-  Camp Minden Industrial Complex
-  Operation Area I



TDD NO. 141257042-14-15  
SOURCE (S) 2016 Microsoft Corporation and its data suppliers  
BING/ClearMap, Inc. Site Plan (May 2016). DWG.

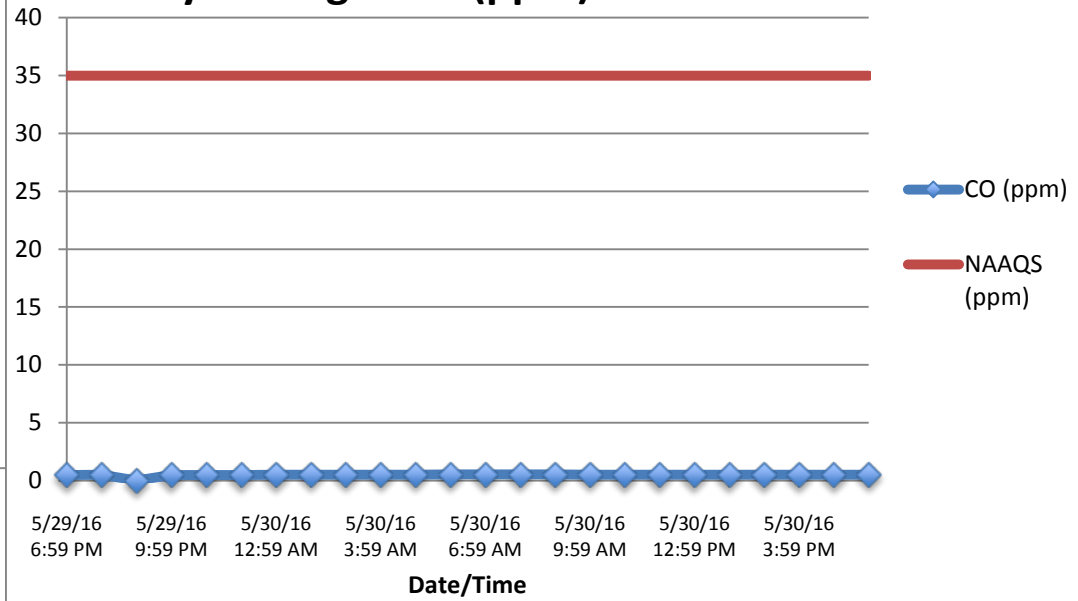


**CAMP MINDEN NORTH  
AMBIENT AIR MONITORING  
LOCATION MAP**  
EXPLO SYSTEMS  
1600 JAVA ROAD  
MINDEN, WEBSTER PARISH, LOUISIANA

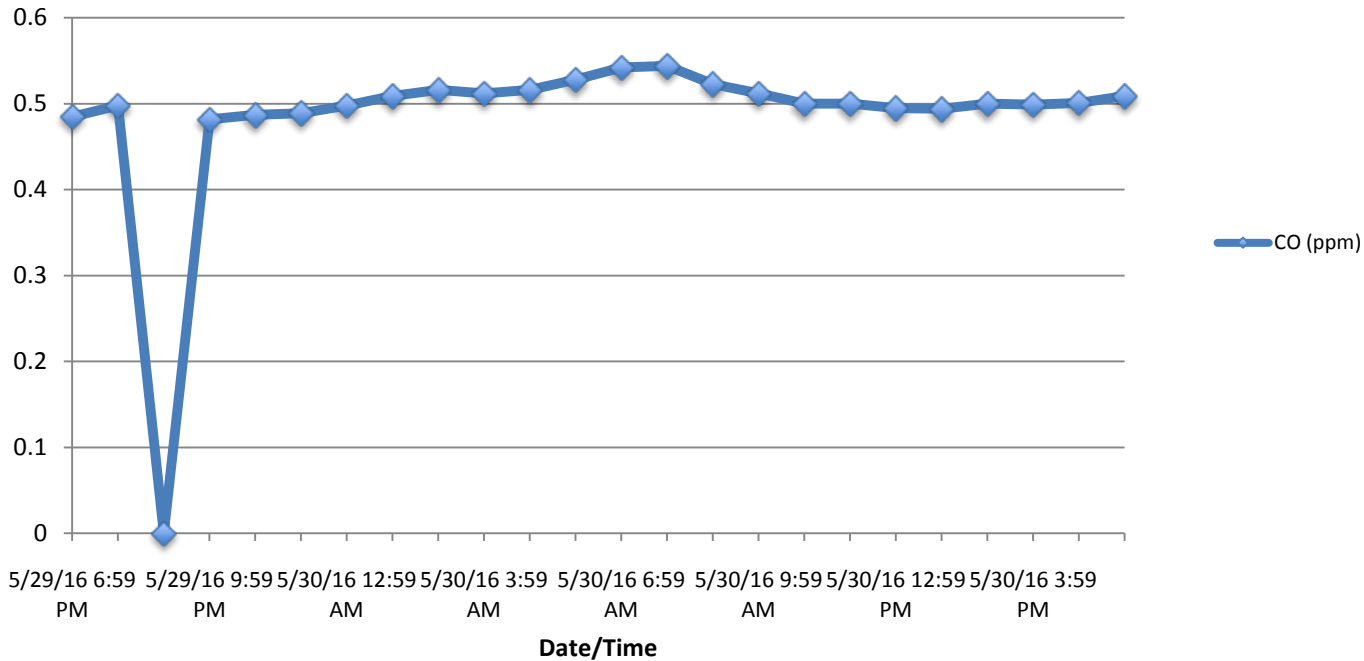
DATE	PROJECT NO.	SCALE
APRIL 2016	EXPLO-2016-10036-01	AS SHOWN

FILE: L:\2016\2016\_04\16\_01\2016\_04\_16\_01\_1600 JAVA ROAD MINDEN NORTH AMBIENT AIR MONITORING LOCATION MAP.dwg 3/28/2016 10:45:20 AM

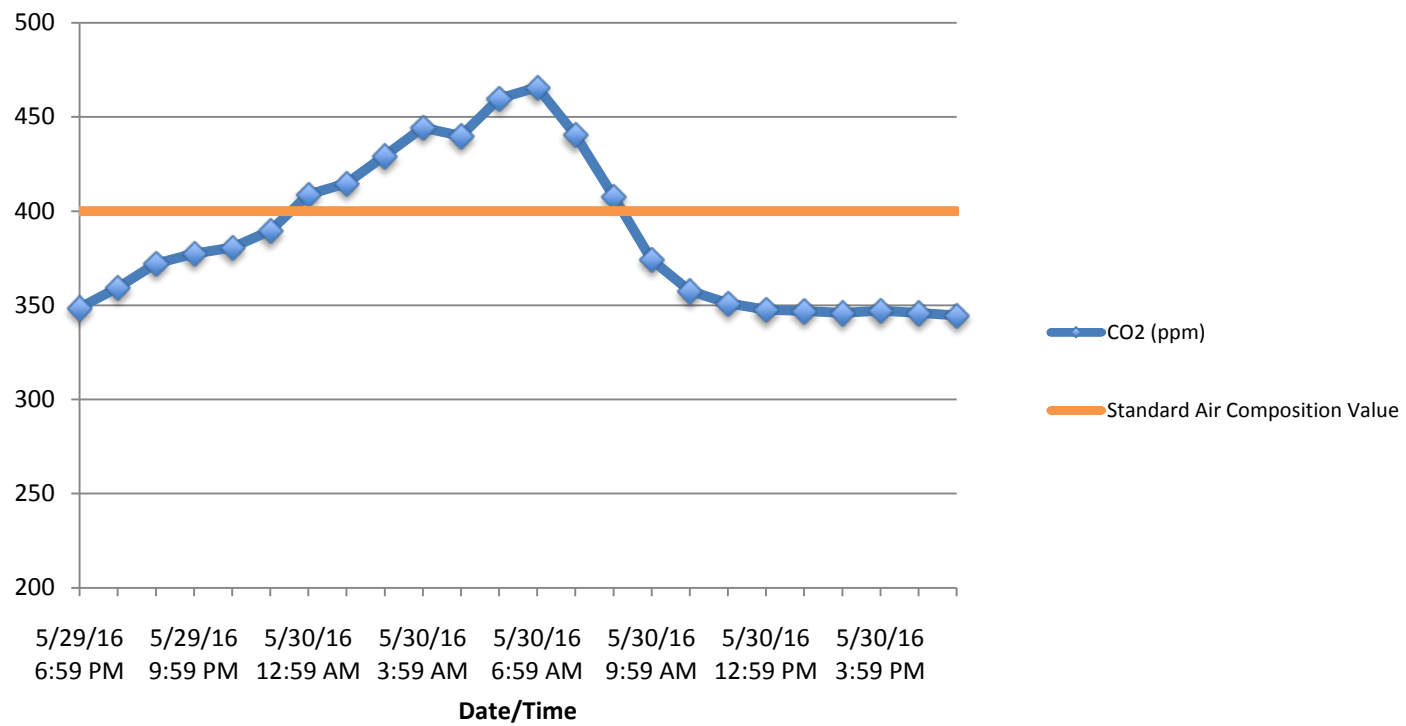
### Hourly Averages CO (ppm)



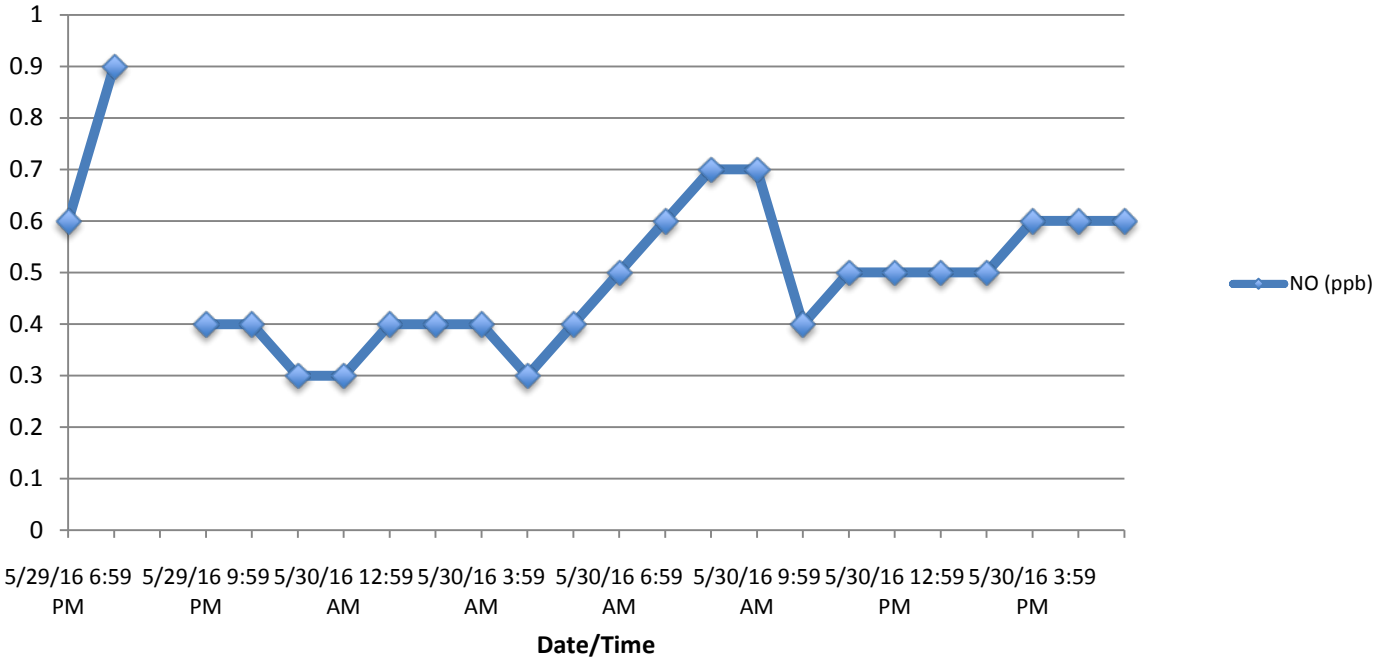
### Hourly Averages CO (ppm) NAAQS 35 ppm



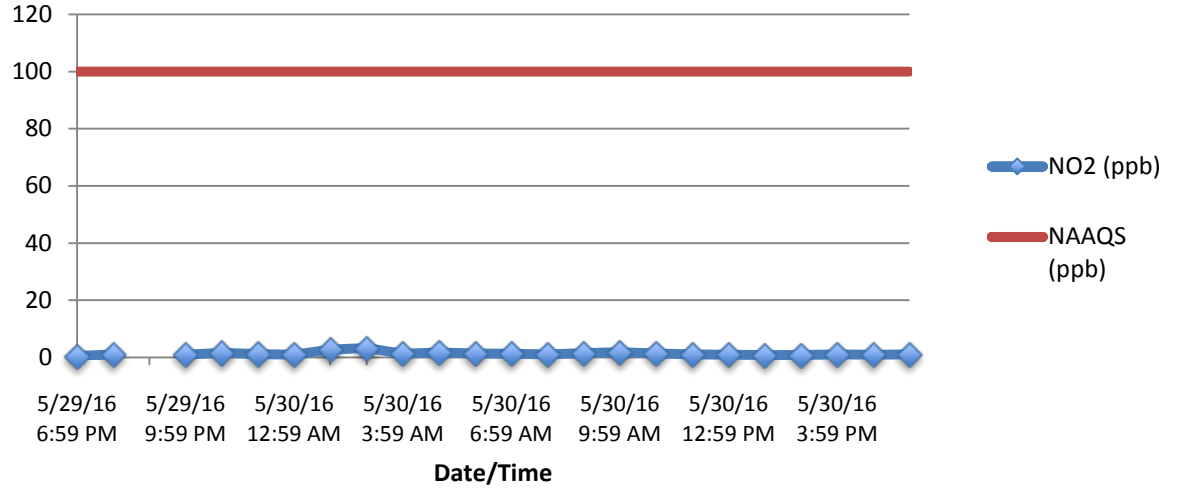
## Hourly Averages CO2 (ppm) For Monitoring Only



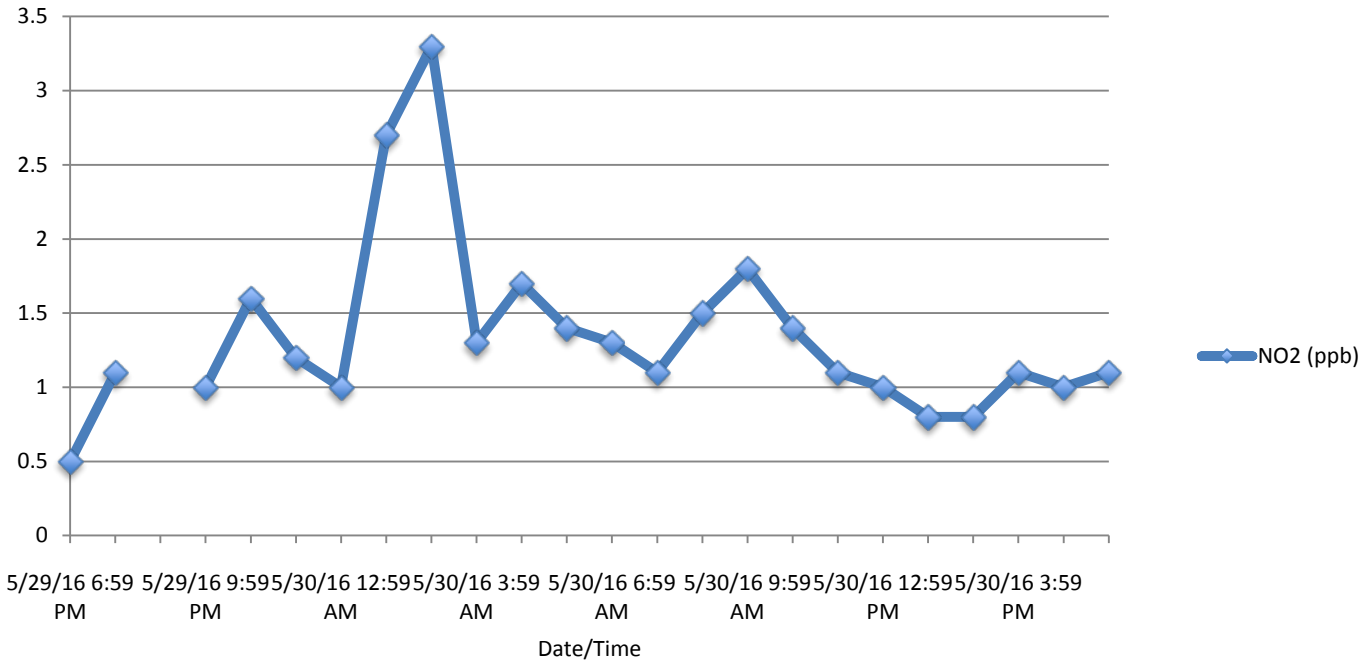
# Hourly Averages NO (ppb) For Monitoring Only



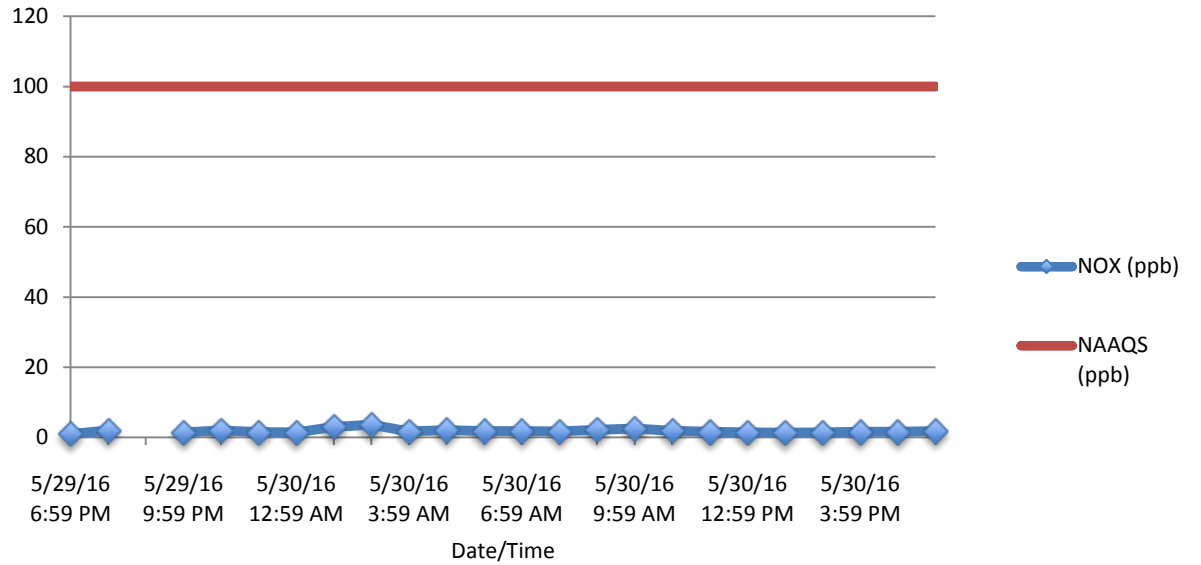
### Hourly Averages NO2 (ppb)



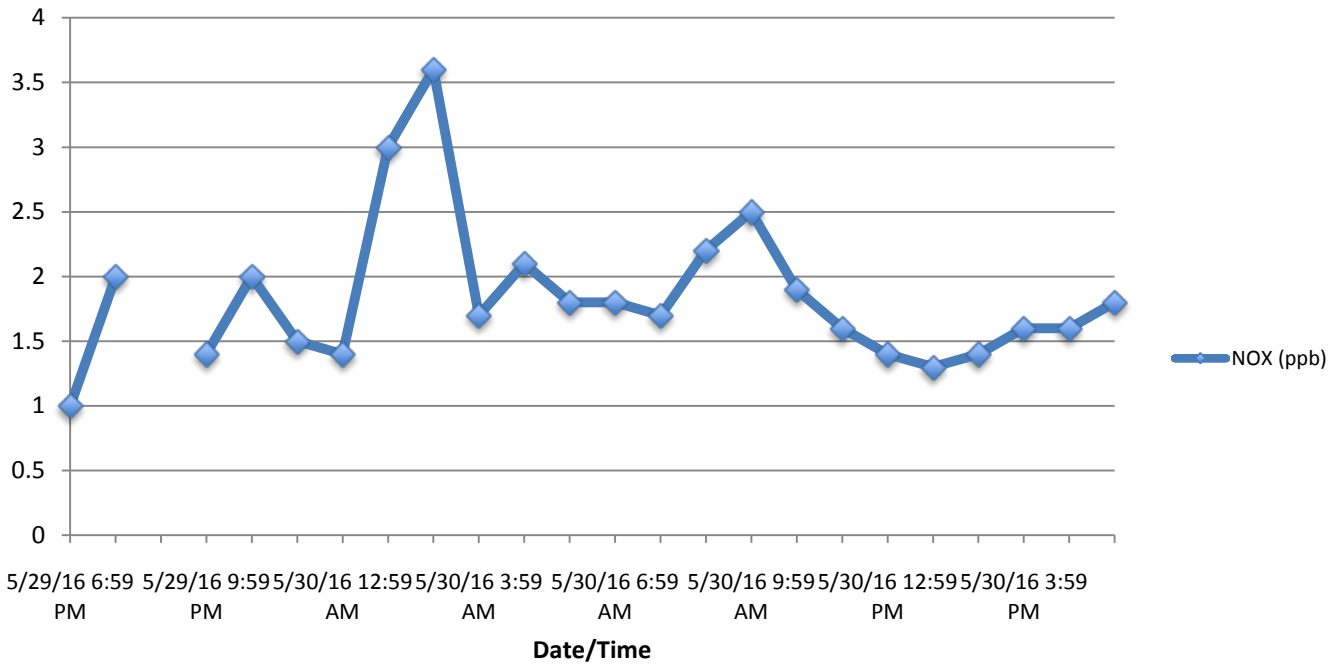
### Hourly Averages NO2 (ppb) NAAQS 100 ppb



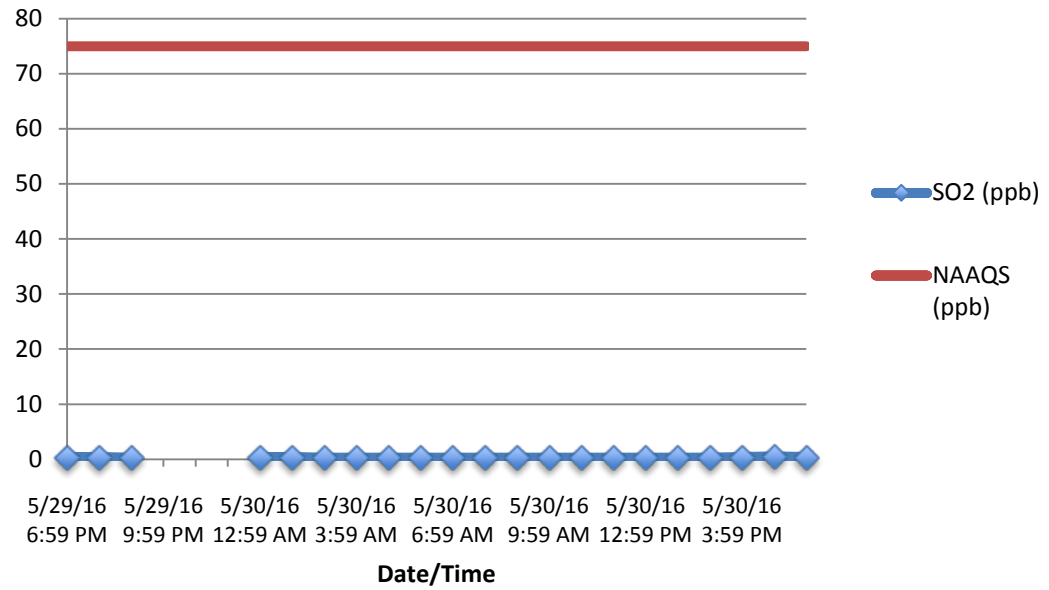
### Hourly Averages NOX (ppb)



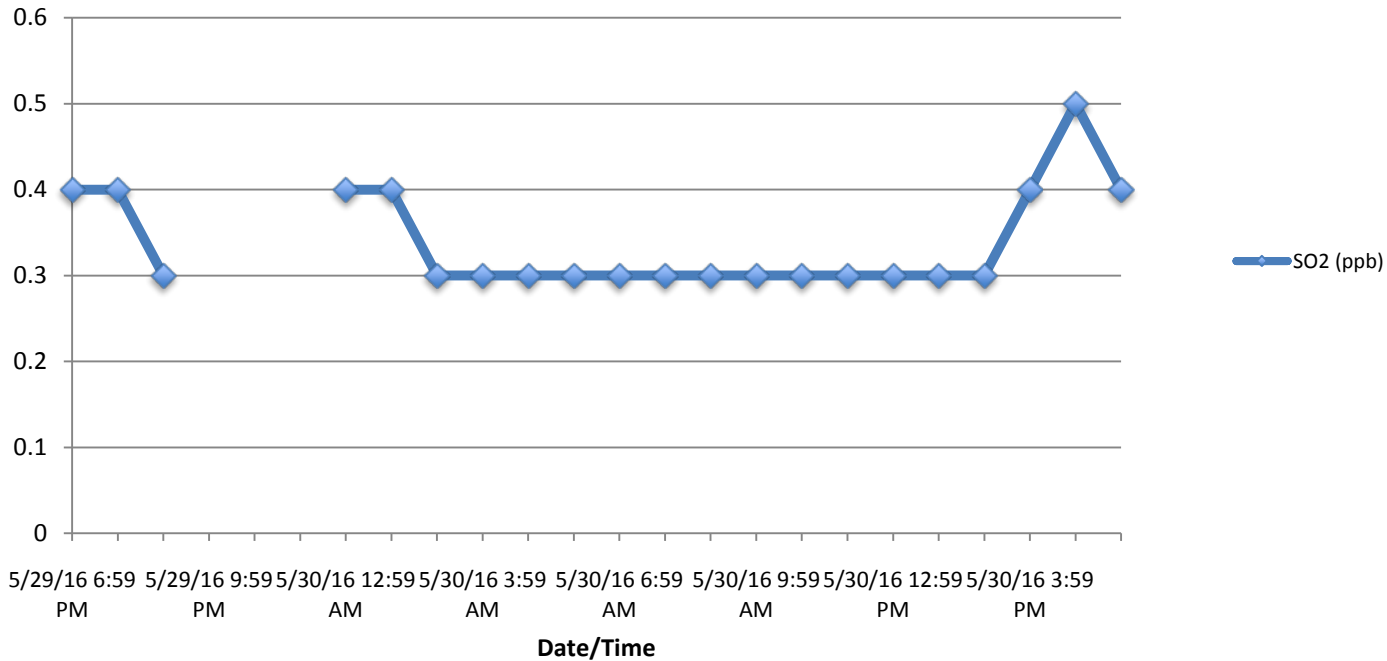
### Hourly Averages NOX (ppb) NAAQS 100 ppb



### Hourly Averages SO2 (ppb)

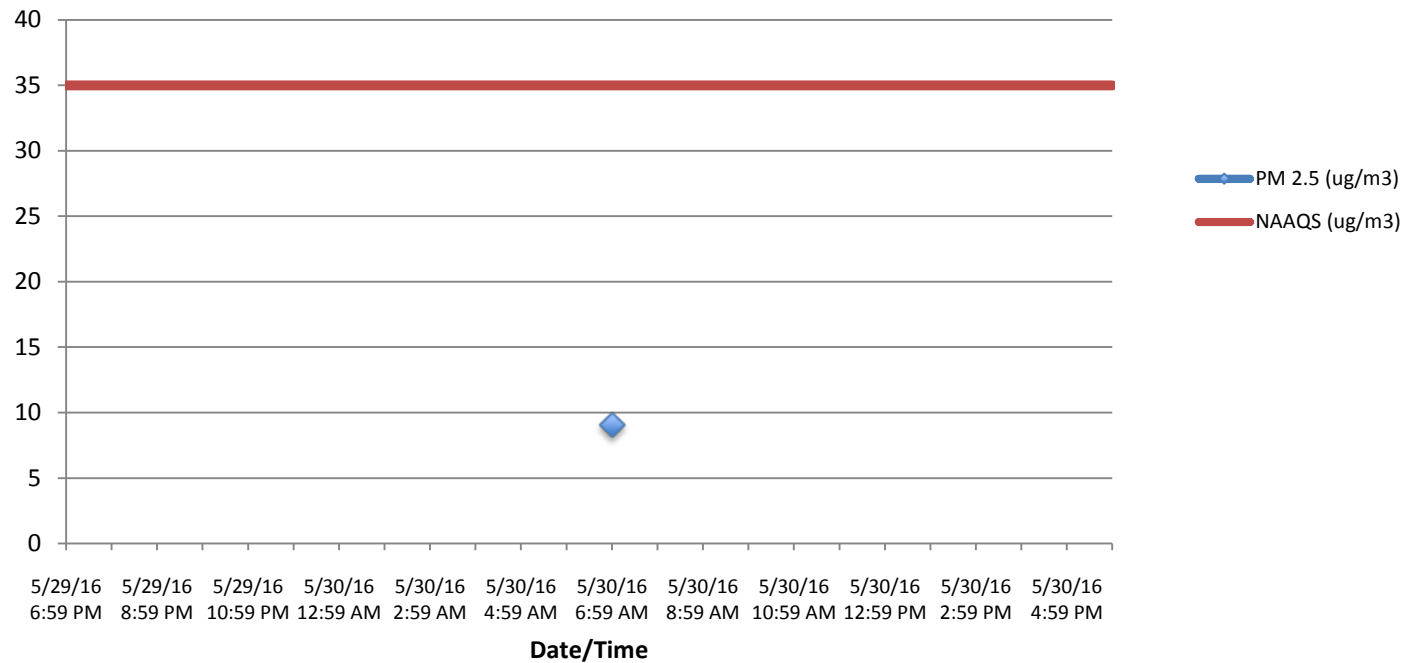


### Hourly Averages SO2 (ppb) NAAQS 75 ppb





## 24 Hour Average PM 2.5 (ug/m3) NAAQS 35 ug/m3



### Hourly Averages PM 2.5 (ug/m3)

