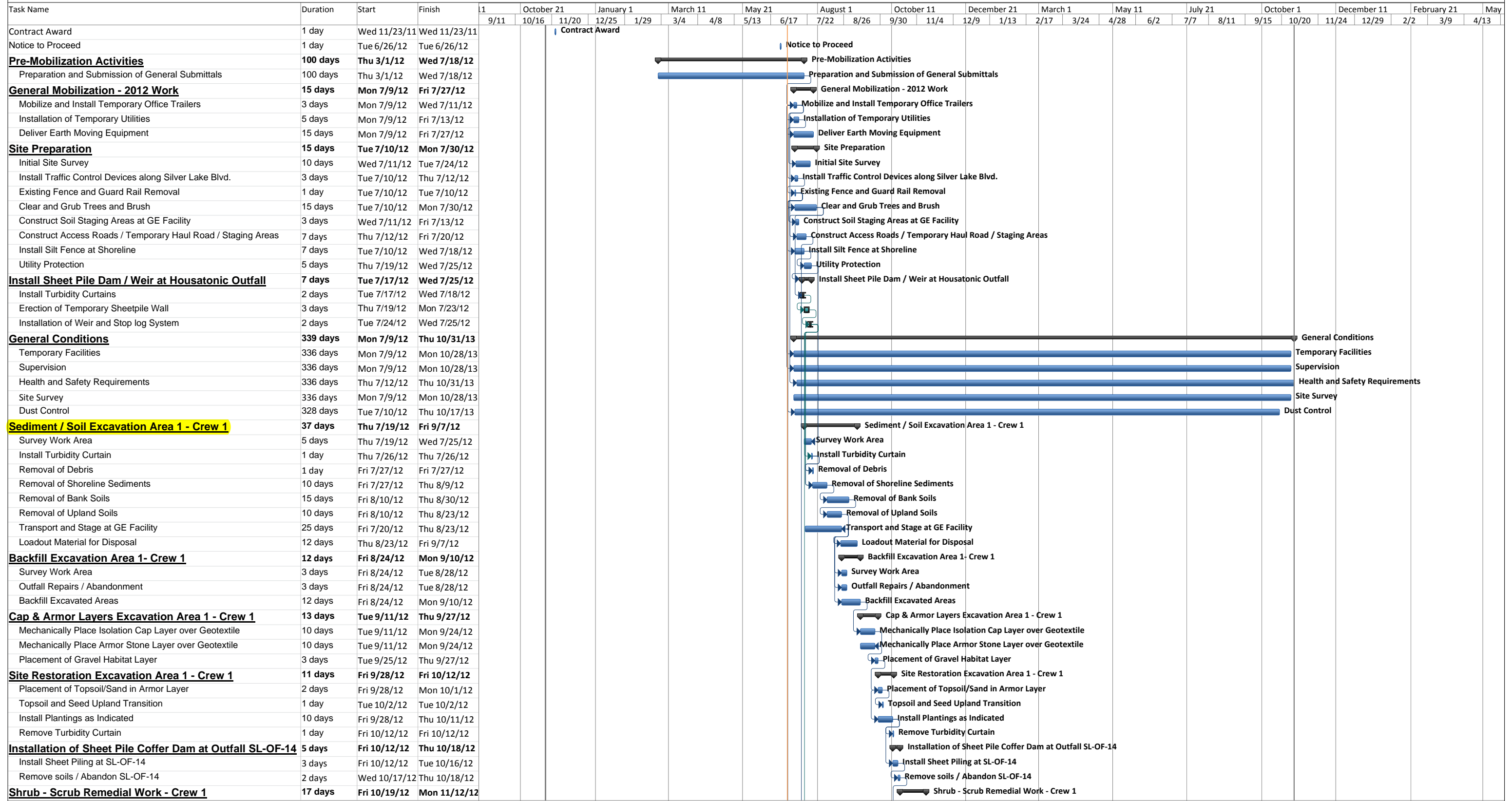


**Silver Lake Removal Action
General Electric Company
Pittsfield, Massachusetts**



Project: Silver lake Removal Actio Date: Tue 7/3/12	Task	Summary	External Milestone	Inactive Summary	Manual Summary Rollup	Finish-only
	Split	Project Summary	Inactive Task	Manual Task	Manual Summary	Deadline
	Milestone	External Tasks	Inactive Milestone	Duration-only	Start-only	Progress

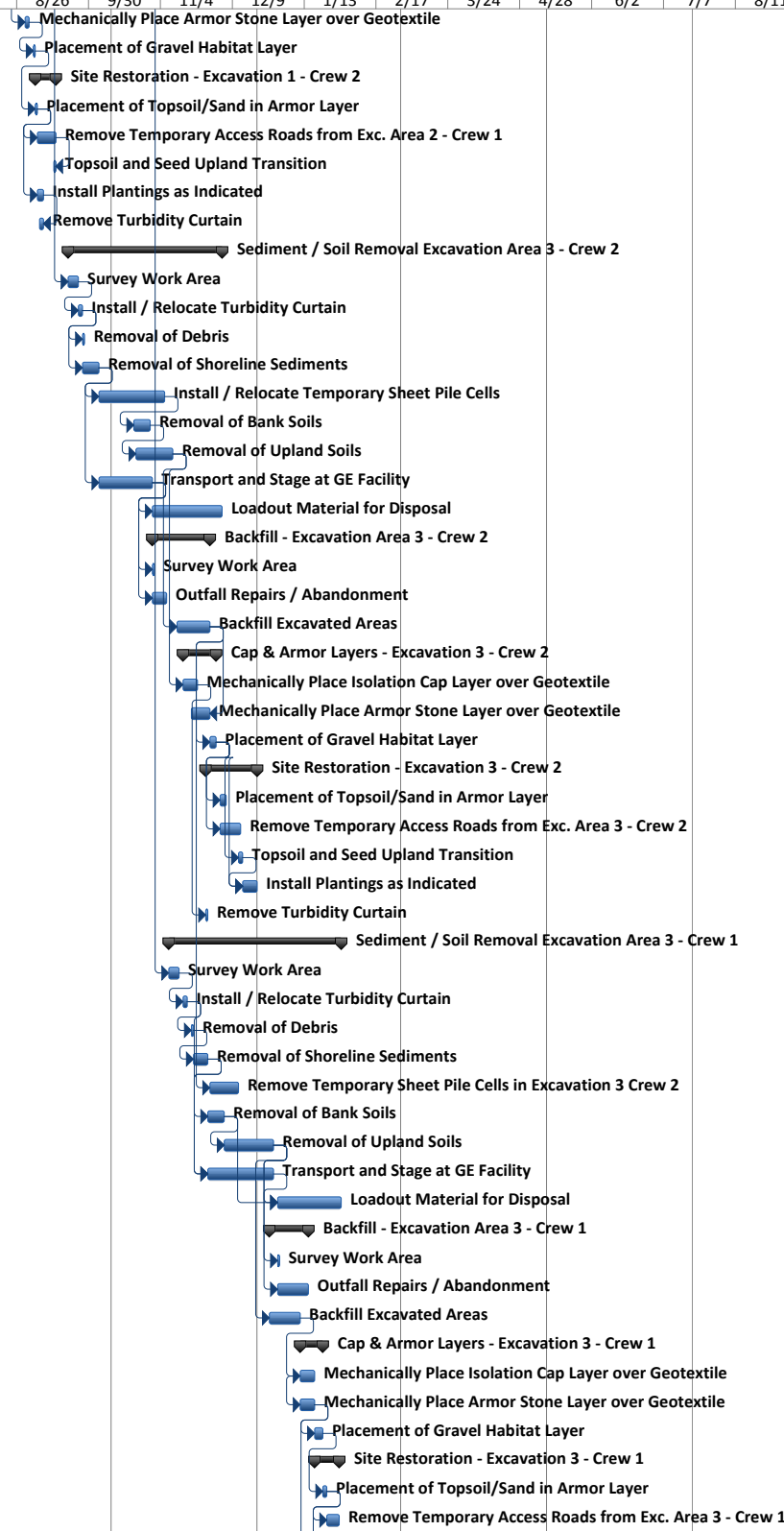
**Silver Lake Removal Action
General Electric Company
Pittsfield, Massachusetts**

Task Name	Duration	Start	Finish	1	October 21	January 1	March 11	May 21	August 1	October 11	December 21	March 1	May 11	July 21	October 1	December 11	February 21	May									
				9/11	10/16	11/20	12/25	1/29	3/4	4/8	5/13	6/17	7/22	8/26	9/30	11/4	12/9	1/13	2/17	3/24	4/28	6/2	7/7	8/11	9/15	10/20	11/24
Survey Work Area	1 day	Fri 10/19/12	Fri 10/19/12																								
Construct Access Road to Excavation Area	1 day	Mon 10/22/12	Mon 10/22/12																								
Install Turbidity Curtain	1 day	Tue 10/23/12	Tue 10/23/12																								
Remove Sediment in Lake	2 days	Wed 10/24/12	Thu 10/25/12																								
Transport and Stage at GE Facility	2 days	Wed 10/24/12	Thu 10/25/12																								
Backfill Excavated Area to Original Grade	1 day	Fri 10/26/12	Fri 10/26/12																								
Mechanically Place 10 " of Isolation over Geotextile	5 days	Fri 10/26/12	Thu 11/1/12																								
Place 8 " Topsoil over Isolation Area	1 day	Fri 11/2/12	Fri 11/2/12																								
Mechanically Place Armor Stone & Habitat Layer	2 days	Mon 11/5/12	Tue 11/6/12																								
Mechanically Place Topsoil in Armor Layer	1 day	Wed 11/7/12	Wed 11/7/12																								
Install Plantings as Indicated	3 days	Wed 11/7/12	Fri 11/9/12																								
Remove Turbidity Curtain	1 day	Mon 11/12/12	Mon 11/12/12																								
Loadout Material for Disposal	3 days	Tue 10/30/12	Fri 11/2/12																								
Sediment / Soil Excavation Area 2 - Crew 2	51 days	Tue 7/17/12	Tue 9/25/12																								
Survey Work Area	8 days	Tue 7/17/12	Thu 7/26/12																								
Install Turbidity Curtain	2 days	Mon 7/23/12	Tue 7/24/12																								
Removal of Debris	1 day	Thu 7/26/12	Thu 7/26/12																								
Removal of Shoreline Sediments	6 days	Thu 7/26/12	Thu 8/2/12																								
Install / Relocate Temporary Sheet Pile Cells	14 days	Wed 7/25/12	Mon 8/13/12																								
Install Bracing at Parcel I9-9-24	5 days	Mon 8/6/12	Fri 8/10/12																								
Removal of Bank Soils	8 days	Mon 8/13/12	Wed 8/22/12																								
Removal of Upland Soils	14 days	Thu 8/23/12	Tue 9/11/12																								
Transport and Stage at GE Facility	12 days	Mon 8/27/12	Tue 9/11/12																								
Loadout Material for Disposal	24 days	Thu 8/23/12	Tue 9/25/12																								
Backfill Excavation Areas 2 - Crew 2	18 days	Mon 8/27/12	Wed 9/19/12																								
Survey Work Area	5 days	Mon 8/27/12	Fri 8/31/12																								
Outfall Repairs / Abandonment	15 days	Mon 8/27/12	Fri 9/14/12																								
Backfill Excavated Areas	10 days	Thu 9/6/12	Wed 9/19/12																								
Cap & Armor Layers Excavation Area 2 - Crew 2	11 days	Thu 9/20/12	Thu 10/4/12																								
Mechanically Place Isolation Cap Layer over Geotextile	10 days	Thu 9/20/12	Wed 10/3/12																								
Mechanically Place Armor Stone Layer over Geotextile	10 days	Thu 9/20/12	Wed 10/3/12																								
Placement of Gravel Habitat Layer	2 days	Wed 10/3/12	Thu 10/4/12																								
Site Restoration Excavation Area 2 - Crew 2	12 days	Fri 10/5/12	Mon 10/22/12																								
Placement of Topsoil/Sand in Armor Layer	2 days	Fri 10/5/12	Mon 10/8/12																								
Topsoil and Seed Upland Transition	3 days	Tue 10/9/12	Thu 10/11/12																								
Install Plantings as Indicated	5 days	Tue 10/9/12	Mon 10/15/12																								
Remove Turbidity Curtain	2 days	Tue 10/16/12	Wed 10/17/12																								
Reinstall Guard Rails and Fence	5 days	Tue 10/16/12	Mon 10/22/12																								
Sediment / Soil Removal Excavation Area 1 - Crew 2	13 days	Mon 8/6/12	Wed 8/22/12																								
Survey Work Area	1 day	Mon 8/6/12	Mon 8/6/12																								
Install / Relocate Turbidity Curtain	2 days	Mon 8/6/12	Tue 8/7/12																								
Removal of Debris	1 day	Wed 8/8/12	Wed 8/8/12																								
Removal of Shoreline Sediments	2 days	Wed 8/8/12	Thu 8/9/12																								
Removal of Bank Soils	2 days	Fri 8/10/12	Mon 8/13/12																								
Removal of Upland Soils	2 days	Tue 8/14/12	Wed 8/15/12																								
Transport and Stage at GE Facility	6 days	Wed 8/8/12	Wed 8/15/12																								
Loadout Material for Disposal	6 days	Wed 8/15/12	Wed 8/22/12																								
Backfill - Excavation Area 1 - Crew 2	5 days	Thu 8/23/12	Wed 8/29/12																								
Survey Work Area	1 day	Thu 8/23/12	Thu 8/23/12																								
Outfall Repairs / Abandonment	3 days	Thu 8/23/12	Mon 8/27/12																								
Backfill Excavated Areas	5 days	Thu 8/23/12	Wed 8/29/12																								
Cap & Armor Layers - Excavation 1 - Crew 2	3 days	Thu 8/30/12	Mon 9/3/12																								
Mechanically Place Isolation Cap Layer over Geotextile	2 days	Thu 8/30/12	Fri 8/31/12																								

Project: Silver lake Removal Actio Date: Tue 7/3/12	Task		Summary		External Milestone		Inactive Summary		Manual Summary Rollup		Finish-only	
	Split		Project Summary		Inactive Task		Manual Task		Manual Summary		Deadline	
	Milestone		External Tasks		Inactive Milestone		Duration-only		Start-only		Progress	

**Silver Lake Removal Action
General Electric Company
Pittsfield, Massachusetts**

Task Name	Duration	Start	Finish	1	October 21	January 1	March 11	May 21	August 1	October 11	December 21	March 1	May 11	July 21	October 1	December 11	February 21	May									
				9/11	10/16	11/20	12/25	1/29	3/4	4/8	5/13	6/17	7/22	8/26	9/30	11/4	12/9	1/13	2/17	3/24	4/28	6/2	7/7	8/11	9/15	10/20	11/24
Mechanically Place Armor Stone Layer over Geotextile	2 days	Thu 8/30/12	Fri 8/31/12																								
Placement of Gravel Habitat Layer	1 day	Mon 9/3/12	Mon 9/3/12																								
Site Restoration - Excavation 1 - Crew 2	8 days	Tue 9/4/12	Thu 9/13/12																								
Placement of Topsoil/Sand in Armor Layer	1 day	Tue 9/4/12	Tue 9/4/12																								
Remove Temporary Access Roads from Exc. Area 2 - Crew 1	7 days	Wed 9/5/12	Thu 9/13/12																								
Topsoil and Seed Upland Transition	1 day	Thu 9/13/12	Thu 9/13/12																								
Install Plantings as Indicated	3 days	Wed 9/5/12	Fri 9/7/12																								
Remove Turbidity Curtain	2 days	Thu 9/6/12	Fri 9/7/12																								
Sediment / Soil Removal Excavation Area 3 - Crew 2	51 days	Thu 9/20/12	Mon 12/3/12																								
Survey Work Area	3 days	Thu 9/20/12	Mon 9/24/12																								
Install / Relocate Turbidity Curtain	2 days	Tue 9/25/12	Wed 9/26/12																								
Removal of Debris	1 day	Thu 9/27/12	Thu 9/27/12																								
Removal of Shoreline Sediments	6 days	Thu 9/27/12	Thu 10/4/12																								
Install / Relocate Temporary Sheet Pile Cells	22 days	Fri 10/5/12	Mon 11/5/12																								
Removal of Bank Soils	6 days	Mon 10/22/12	Mon 10/29/12																								
Removal of Upland Soils	14 days	Tue 10/23/12	Fri 11/9/12																								
Transport and Stage at GE Facility	18 days	Fri 10/5/12	Tue 10/30/12																								
Loadout Material for Disposal	22 days	Wed 10/31/12	Mon 12/3/12																								
Backfill - Excavation Area 3 - Crew 2	18 days	Wed 10/31/12	Tue 11/27/12																								
Survey Work Area	1 day	Wed 10/31/12	Wed 10/31/12																								
Outfall Repairs / Abandonment	5 days	Wed 10/31/12	Tue 11/6/12																								
Backfill Excavated Areas	10 days	Mon 11/12/12	Tue 11/27/12																								
Cap & Armor Layers - Excavation 3 - Crew 2	10 days	Thu 11/15/12	Fri 11/30/12																								
Mechanically Place Isolation Cap Layer over Geotextile	5 days	Thu 11/15/12	Wed 11/21/12																								
Mechanically Place Armor Stone Layer over Geotextile	5 days	Mon 11/19/12	Tue 11/27/12																								
Placement of Gravel Habitat Layer	3 days	Wed 11/28/12	Fri 11/30/12																								
Site Restoration - Excavation 3 - Crew 2	19 days	Mon 11/26/12	Thu 12/20/12																								
Placement of Topsoil/Sand in Armor Layer	3 days	Mon 12/3/12	Wed 12/5/12																								
Remove Temporary Access Roads from Exc. Area 3 - Crew 2	8 days	Mon 12/3/12	Wed 12/12/12																								
Topsoil and Seed Upland Transition	2 days	Wed 12/12/12	Thu 12/13/12																								
Install Plantings as Indicated	5 days	Fri 12/14/12	Thu 12/20/12																								
Remove Turbidity Curtain	1 day	Mon 11/26/12	Mon 11/26/12																								
Sediment / Soil Removal Excavation Area 3 - Crew 1	55 days	Thu 11/8/12	Wed 1/30/13																								
Survey Work Area	3 days	Thu 11/8/12	Mon 11/12/12																								
Install / Relocate Turbidity Curtain	2 days	Thu 11/15/12	Fri 11/16/12																								
Removal of Debris	1 day	Mon 11/19/12	Mon 11/19/12																								
Removal of Shoreline Sediments	3 days	Tue 11/20/12	Mon 11/26/12																								
Remove Temporary Sheet Pile Cells in Excavation 3 Crew 2	10 days	Wed 11/28/12	Tue 12/11/12																								
Removal of Bank Soils	6 days	Tue 11/27/12	Tue 12/4/12																								
Removal of Upland Soils	16 days	Wed 12/5/12	Fri 12/28/12																								
Transport and Stage at GE Facility	22 days	Tue 11/27/12	Fri 12/28/12																								
Loadout Material for Disposal	22 days	Mon 12/31/12	Wed 1/30/13																								
Backfill - Excavation Area 3 - Crew 1	12 days	Thu 12/27/12	Mon 1/14/13																								
Survey Work Area	1 day	Mon 12/31/12	Mon 12/31/12																								
Outfall Repairs / Abandonment	10 days	Mon 12/31/12	Mon 1/14/13																								
Backfill Excavated Areas	10 days	Thu 12/27/12	Thu 1/10/13																								
Cap & Armor Layers - Excavation 3 - Crew 1	7 days	Fri 1/11/13	Mon 1/21/13																								
Mechanically Place Isolation Cap Layer over Geotextile	5 days	Fri 1/11/13	Thu 1/17/13																								
Mechanically Place Armor Stone Layer over Geotextile	5 days	Fri 1/11/13	Thu 1/17/13																								
Placement of Gravel Habitat Layer	2 days	Fri 1/18/13	Mon 1/21/13																								
Site Restoration - Excavation 3 - Crew 1	8 days	Fri 1/18/13	Tue 1/29/13																								
Placement of Topsoil/Sand in Armor Layer	2 days	Tue 1/22/13	Wed 1/23/13																								
Remove Temporary Access Roads from Exc. Area 3 - Crew 1	4 days	Thu 1/24/13	Tue 1/29/13																								



Project: Silver lake Removal Actio Date: Tue 7/3/12	Task		Summary		External Milestone		Inactive Summary		Manual Summary Rollup		Finish-only	
	Split		Project Summary		Inactive Task		Manual Task		Manual Summary		Deadline	
	Milestone		External Tasks		Inactive Milestone		Duration-only		Start-only		Progress	



Andrew T. Silfer

GE
319 Great Oaks Blvd.
Albany, NY 12203

T 518 862 2703
F 518 862 2731
andrew.silfer@corporate.ge.com

Transmitted via Electronic Mail and Overnight Delivery

July 18, 2012

Mr. Dave Dickerson
U.S. Environmental Protection Agency
5 Post Office Square – Suite 100
Boston, MA 02109-3912

**Re: GE-Pittsfield/Housatonic River Site
Silver Lake Area (GECD600)
Addendum to the Revised Supplemental Information Package – Revised Project
Schedule**

Dear Mr. Dickerson:

On July 2, 2012, the U.S. Environmental Protection Agency (EPA) issued a letter to the General Electric Company (GE) providing conditional approval of GE's June 2012 *Addendum to the Revised Supplemental Information Package for Silver Lake Area Removal Action* (Addendum). That letter requested that an updated project schedule be submitted to EPA by July 27, 2012. In response, attached for your review is an updated project schedule for the Silver Lake Area Removal Action.

Please do not hesitate to contact me if you have any questions.

Sincerely,

Lauren Putnam /for

Andrew T. Silfer, P.E.
GE Project Coordinator

Attachment

cc: Dean Tagliaferro, EPA
Holly Inglis, EPA
Tim Conway, EPA**
Rose Howell, EPA**
Robert Leitch, USACE**
Linda Palmieri, Weston Solutions (2 hard copies)
John Ziegler, MDEP (2 hard copies)**
Michael Gorski, MDEP**
Eva Tor, MDEP**
Nancy E. Harper, MA AG*
Karen Pelto, MDEP*
Kenneth Munney, USFWS**
Mayor Daniel Bianchi, City of Pittsfield*
James McGrath, Dept. of Parks and Recreation, City of Pittsfield**
Corydon Thurston, Executive Director, PEDDA
John Burke, WMECo.**
John Tulloch, WMECo.**
Charles Nicol, Northeast Utilities*
Barbara Landau, Noble & Wickersham**
James Gagnon, O'Reilly, Talbot & Okun**
Susan Peterson, CT DEEP**
Michael Carroll, GE*
Rod McLaren, GE*
Richard Gates, GE
Kevin Mooney, GE
James Bieke, Sidley Austin LLP
Mark Gravelding, ARCADIS
Todd Cridge, ARCADIS
Michael Muth, Severson
Public Information Repositories
GE Internal Repositories

* *without attachment*

** *with attachment in electronic format*