

# DuPont East Chicago Site RCRA Corrective Action Program

September 16, 2017

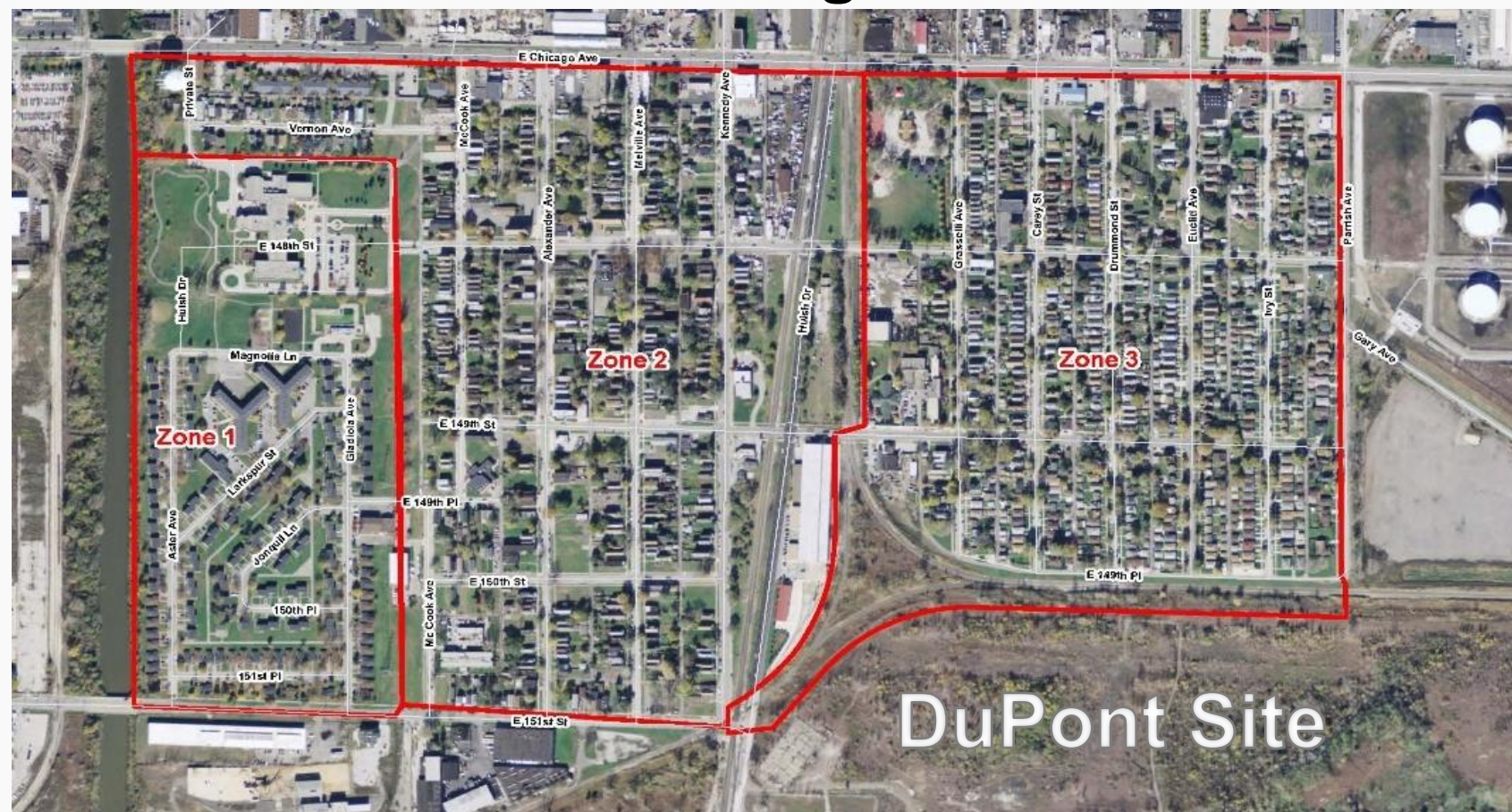
Jennifer Dodds

RCRA CA Project Manager

EPA Region 5



# Riley Park Neighborhood and DuPont East Chicago





# DuPont East Chicago



9/20/2017

U.S. Environmental Protection Agency



## Why is DuPont under RCRA and not a Superfund site?

- DuPont submitted a RCRA permit application for the onsite generation and storage of hazardous wastes on November 3, 1980
- Under RCRA Corrective Action jurisdiction per an Administrative Order since 1997
- RCRA authorizes EPA to require corrective action investigation and cleanup (under an enforcement order or as part of a permit) whenever there is, or has been, a release of hazardous waste or constituents



## RCRA and Superfund Cleanups

RCRA and CERCLA cleanup programs have roughly the same approach to cleanups...

- RCRA Facility Investigation (RFI) = Superfund Remedial Investigation (RI)
- RCRA Corrective Measures Study (CMS) = Feasibility Study (FS) in Superfund
- RCRA Statement of Basis = Superfund proposed plan  
\*\*This is where we are at the DuPont Site\*\*
- RCRA Final Decision = Record of Decision (ROD) in Superfund



## Will EPA have a presentation on DuPont?

- YES, a Public Meeting
- The proposed remedy document, the Statement of Basis, will be released this Fall
- 30-day Public Comment Period to review and comment on proposed remedy
- DuPont Public Meeting will be held to fully explain proposed remedy, answer questions, and take comments
- Fact Sheet will be posted on the website and mailed to the Riley Park Neighborhood



## What contaminants are present at the DuPont site?

- Mainly arsenic, cadmium, lead and zinc in soils
- Mainly arsenic in groundwater
  - Lead arsenate (insecticide) manufactured at the DuPont site
- PFOSs and PFOAs are not site related contaminants
  - PFOAs or PFOS were not stored, produced, used, handled, managed, disposed of, or processed at the East Chicago site
  - DuPont did not transported PFOS or PFOA to or from the East Chicago site



## **What is the status of the underground water study at DuPont? Is there a timeline of when it will be completed?**

- DuPont studied how to treat (clean) the groundwater
- Laboratory tests to treat the arsenic in the groundwater were completed in 2014
- On-site tests to confirm the laboratory results were completed in 2015
- We are using all that information to propose remedies to address the elevated arsenic in the groundwater





## Is contaminated groundwater from DuPont site migrating towards USS Lead residential areas?

- A portion of the groundwater from the DuPont site migrates north towards the Riley Park Neighborhood.
- The remaining groundwater at the DuPont site migrates south towards the Grand Calumet River
- Proposed remedy will have compliance points at both ends of the site to prevent the low levels of arsenic from leaving the site



## **What is the status of any underground storage tanks (USTs) on DuPont site?**

- USTs on the DuPont site were filled or closed prior to 1985
  - GW wells near closed USTs did not show impacts to GW from USTs
- 3 USTs are on the Leased Grace Property
  - 2 are used for potable water storage
  - 1 was abandoned in the 1980s and was never used by Grace



# Thank You

For more information on the DuPont RCRA CA Site:  
<https://www.epa.gov/in/hazardous-waste-cleanup-dupont-facility-east-chicago-indiana>